

TOWN OF SUDBURY

Town Manager Newsletter



With an abundance of COVID-19 safety precautions in place, Annual Town Election was held on June 23, 2020. Congratulations to Charlie Russo, who was elected to the Board of Selectmen, and thank you to Patricia Brown for years of dedicated service on the Board.

Message from the Town Manager

Most of the readers of this newsletter will remember either saying or hearing these words at least 12 or more times, “I’m rubber you’re glue, whatever you say bounces off of me and sticks to you!” This type of statement usually came as a result of what I call an intense fellowship (argument) with name calling as a highlight. Soon afterwards came a comment about no longer being friends... Of course, the friendship continued, in most cases, and the words really did not bounce off.

Our daily experience has pushed the boundaries of comfort and intensities. This is a result of being in a sustained posture of discomfort, fear, anger, isolation and confusion – related to the global pandemic, Coronavirus/COVID-19. We are built to handle stress, both types, eustress (good) and distress (bad). What we are not built for is continued and unrelenting times and patterns of stress. My grandmother would say that anything to excess is bad; unfortunately, the relative end of this treacherous virus can only be imagined at this point. We imagine compliance-based elimination of the virus and medical breakthroughs to bring relief.

In this Issue:

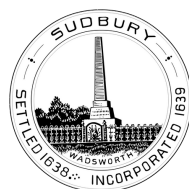
INVASIVE PLANTS

COMMUNITY
ALLIANCE FOR RACE
EDUCATION SERIES
(CARES)

BACK TO SCHOOL
AND COVID-19

CSX ACQUISITION

ANNUAL TOWN
MEETING



Meanwhile, there are intense fellowships going on in our lives that are disruptive and damaging to relationships, homes, workplace and community relationships. I would like to offer a few ways to offset the challenges as they arise. Consider healthy distractions; exercise, music, reading, or other fun activities... but afterwards, if a discussion was delayed, go back to it with a better approach. Consider the other perspectives; as they say, put yourself in someone else's shoes. How would you think or feel if you were in their place?

I served a great leader who implemented the "Mom Rule" which essentially requested people to treat each other like they would their mom. Lastly, ask yourself, if I extend a bit of grace, would that make things better or not. Let courtesy become common in these days, see if that can bounce off of you and stick to someone else!

Please see the various resources available here:
<https://sudbury.ma.us/health/> and
<https://emergency.cdc.gov/coping/index.asp>.

-Henry L. Hayes, Jr. , Town Manager

TOWN MANAGER OFFICE HOURS

Monday, Sept 28, 2020

3 PM - 4 PM

Zoom Meeting

JOIN ONLINE

<https://us02web.zoom.us/j/81443386131>

CALL IN

978-639-3366 or 470-250-9358

Meeting ID: 814 4338 6131



Town Manager Henry L. Hayes, Jr. will be holding virtual open office hours for residents to talk about issues of interest and concern. Please join the Zoom meeting at any time from 3 PM - 4 PM on Monday, September 28 to say hello, ask questions or discuss town matters.



Invasive species such as Bittersweet (seed and vines shown above) squeeze out other plants and the animals by monopolizing their light, water and nutrients.

Conservation Department

LORI CAPONE,
CONSERVATION COORDINATOR

The Conservation Commission and Department have been working with homeowners over the summer, permitting many projects within wetland jurisdiction. Typical projects include tree removal, additions, and appurtenant structures, but lately the focus has been on invasive plant species removal.

Invasive Plants in Sudbury

Sudbury, like many towns in the region, faces a significant incursion of invasive species. Common terrestrial invasive species in Sudbury include Oriental bittersweet, honeysuckle, Autumn/Russian olive, burning bush, black swallowwort, garlic mustard, glossy buckthorn, Japanese barberry, Japanese knotweed, multi-flora rose, Norway maple trees, and porcelain-berry, to name a few.

These species are well established in Sudbury and many residents have one or more of these species in their yards. These species are not native to the area and outcompete our native species by growing and reproducing faster than them under the same growing conditions. Free from the predators, diseases, and other plants that keep them in check in their native ranges, they monopolize the light, water, and other nutrients all plants need. Sometimes these dense colonies even alter the air temperature and soil chemistry around them, further squeezing out other plants and the animals that depend on them. There are also early detection species that are just starting to make a presence in the area. Vigilance is needed to keep these species out of Sudbury. These include Japanese stilt grass, mile-a-minute and narrow-leaf bittercrest.

One example of how destructive these plants can become if left unchecked that everyone is familiar with is Oriental bittersweet, which

was introduced in 1860 as an ornamental plant. When left uncontrolled, established bittersweet vines will literally take over the landscape, smothering out native species of trees, shrubs, and plantings. The tangled vines can also become so heavy that entire trees and plants may be uprooted once the bittersweet plant takes over. The United States Department of Agriculture has the bittersweet plant listed as a national invasive species. To learn more, see the [Massachusetts Prohibited Plants List](#).

The Commission encourages those with invasive plants to eradicate these plants through mechanical and manual means when feasible. As a reminder, any invasive species removal within 100 feet of wetland resource areas, including vernal pools, or within 200 feet of a perennial stream may require approval from the Conservation Commission, so please contact the Conservation Office before you begin.

Waterchestnut

Management

The Commission has been working with the Hop Brook Protection Association to eradicate an aquatic invasive species in our water bodies: waterchestnut. Waterchestnut was introduced to North America in Middlesex County, Massachusetts, in the 1870s and purposely released in Concord, MA in a pond near the Sudbury River. Waterchestnut has covered nearly 80% of the surface area of Grist Mill, Carding Mill, and Stearns Mill Ponds. After an extensive permitting process with the Conservation Commission, the Commission did permit the use of

Clearcast (imazamox), a systemic herbicide used on many submerged, emergent, and floating broadleaf and monocot aquatic plants. The product is applied directly to the leaf of the plant once it has reached the water surface but before the seed has time to form and become viable. The first herbicide treatment of these ponds was conducted in mid-July and a follow up treatment is proposed for early August. To learn more and follow the effectiveness of this program over the next three years, please visit the the Waterchestnut Management page.

Hiking Trails and COVID-19

Finally, we continue to see our conservation lands being well utilized by the community, and are appreciative of those practicing social distancing and wearing masks when it is not possible to stay six feet away. The [COVID Trail Protocol](#) requiring dogs on leash, social distancing and/or masks, and not touching trail amenities like benches and kiosks, remains in place until further notice. A reminder for all taking advantage of the great weather to get out and see the spaces we offer; please make sure you leave no trash, masks or dog waste bags. We appreciate your cooperation, we want to have our Conservation areas left unaffected for the wildlife calling them home.

Fairbank Community Center Virtual Town Forum

A NEW PROPOSAL FOR THE FAIRBANK COMMUNITY CENTER WILL BE PRESENTED AT ANNUAL TOWN MEETING ON SEPTEMBER 12, 2020. LEARN MORE ABOUT THE ISSUES FACING THE BUILDING AS WELL AS THE PROPOSED PLAN FOR ITS FUTURE.



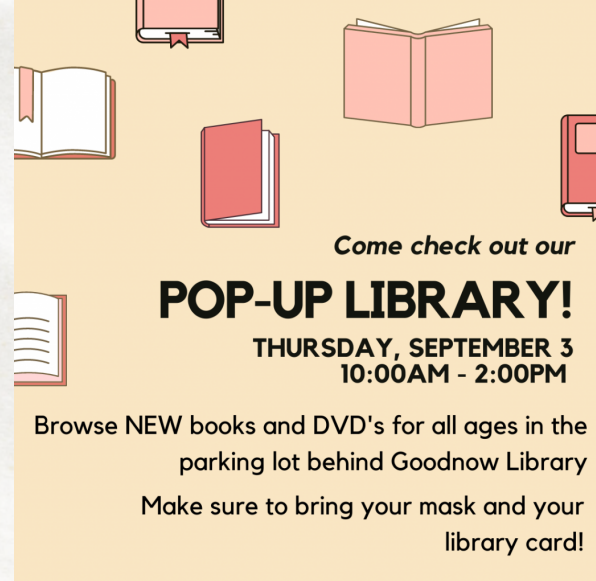
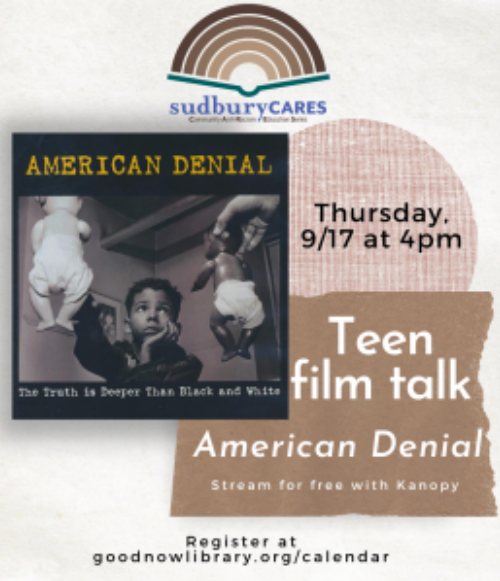
TOWN FORUM:
[SUDBURY.MA.US/
TOWNFORUM](https://SUDBURY.MA.US/TOWNFORUM)



FAIRBANK TOUR:
[TINYURL.COM
/Y3ZZTDM9](https://TINYURL.COM/Y3ZZTDM9)



LEARN MORE:
[SUDBURY.MA.US/
FAIRBANK PROJECT](https://SUDBURY.MA.US/FAIRBANK_PROJECT)



Innovating in the face of challenge, the Goodnow Library continues to offer a wealth of programs to the community. The above are just a sample of the new offerings. View more at Goodnowlibrary.org.

Goodnow Library

ESMÉ GREEN,
LIBRARY DIRECTOR

Hello Goodnow Library Users! Happy Summer! As we navigate the new normal during the COVID-19 pandemic, we want you to know that we are here for you. In addition to weekly children's and teen virtual programming and additional online resources for e-books and streaming video content, we have now added [Contactless Pick up](#).

Introducing the Community Alliance for Race Education Series (Sudbury CARES)

The Goodnow Library, together with others in the community, believes that promoting the seeking of knowledge and information leads to understanding and empathy. As a result, we are launching a new community wide series called Sudbury CARES (Community Alliance for Race Education Series).

This group was formed to create a space for everyone in our community to discuss and learn about racism, causes of systemic racism, and what can be done to counteract it. This is a welcoming group for everyone of any age or background. Our goal is to learn and explore together, in a safe space where all voices are heard and listened to with respect.

Upcoming events in the series included film and book discussions for kids, teens and adults. Visit Sudbury CARES to learn more and sign up.

Download/Stream Books, Audio, Music, Video

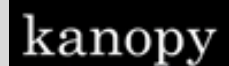
Start exploring the world of digital media today! We have an array of free choices for downloading e-books, e-audiobooks and music.

Minuteman's Digital Catalog: Powered by Overdrive, provides access to a large collection of eBooks, eAudio and streaming video. Available to all Minuteman cardholders.

Kanopy: On-demand streaming video service offering thousands of award-winning documentaries, training films and theatrical releases across diverse subjects and disciplines.

HOOPLA: Online service that allows you to check out an awesome selection of digital music, movies, and audio books FREE.

For help with any of these products, call 978-440-5520 or email REFERENCE@SUDBURY.MA.US.



Behind the Scenes

We want to thank everyone in the community for their support and patience while the library building is closed to the public. We miss everyone so much! Here is a peek at what we are busy with behind the scenes.

Summer Reading Kits

Children's Summer Reading Grab and Go kits, assembled and ready for distribution!

Book Quarantine

The Community Room has been transformed into our materials quarantine area. Items sit here for 72 hours before being handled.

Contactless Pickup

Here is a snapshot of the scene behind the Circulation Desk. Staff collect your items from the reserve shelves, check them out and put them in paper bags. Once sealed, they are taken out to the pickup shelves outside the front doors.

Materials Holds

We have had to add—and add—and ADD to our Reserve shelves!





Collaboration between the Board of Health and Sudbury School Nurses has allowed the Town to establish its own contact tracing initiative.

Health Department

BILL MURPHY,
HEALTH DIRECTOR

Back to School and COVID-19

The Sudbury Health Department has been collaborating with nurses from each Sudbury school to ensure the health workforce is properly prepared for school reopening. This collaboration over the past five months, mutually beneficial to both departments, has led to cross training as contact tracers, disease investigators, and managing a large case load of patients during the COVID-19 pandemic. Their valuable assistance during this pandemic allowed the Town of Sudbury to establish its own contact tracing initiative. Sudbury residents benefited from the school nurse's understanding of the community, particularly youths, and the knowledge these nurses bring to their practice. This continued collaboration allowed the nurses to keep informed of the latest

guidelines, work on important documents for reopening, and continue training they need to manage health and well-being at their schools in September. Please look for specific back-to-school guidance in the coming weeks to prepare students and families for COVID-19 procedures. Special thanks to all the Sudbury school nurses for the support in managing COVID-19 in the Sudbury community.

Homelessness Needs

Calls into the social work office regarding people who are actively homeless have continued to increase during the COVID-19 pandemic. Here are some helpful resources if you or someone you know is facing homelessness:

Emergency Assistance Shelters

- For families who are pregnant or have children under 21
- Income requirement
- Homelessness due to: no fault fire, natural disaster, condemnation or foreclosure; fleeing domestic violence; no fault eviction; or children exposed to health/safety risk
- (866) 584-0653

MetroWest Housing Consumer Education Center (HCEC)

- 24 Hour Hotline
- Can answer questions about housing concerns
- Allow 48 hours for response
- (508) 872-0765

MetroWest Legal Services

- Provides free legal services to seniors and low-income residents
- (508) 620-1830

Community Action Agencies

SMOC: Entry point into emergency, transitional, or sober housing

- (508) 872-4853

RAFT: Homelessness prevention program funded by DHCD

- Short term financial assistance (Rent, utilities, security deposit)
- Must be currently homeless
- or in the court eviction process
- <https://www.metrohousingboston.org/what-we-do/rental-relief-and-eviction-prevention/>

Subsidized Housing

- Resources and guidance from Sudbury Social Work Office
- <https://sudbury.ma.us/socialworker/?p=437>

Planning and Community Development

ADAM DUCHESNEAU,
PCD DIRECTOR

Cold Brook Crossing Residential Development

The Planning Board is closing in on final decisions for the 274-unit Cold Brook Crossing residential development at 16 & 36 North Road (formerly known as the Quarry North or Melone Property). The Applicant had filed for Plan Approval, Final Plan Approval, and Stormwater Management Permits for the project, and the Planning Board will be issuing decisions on these applications. The developer will also most likely be filing Building Permit applications for the project as well. In addition to the market rate units, the project will include 81 age restricted and 26 affordable dwelling units in townhouses and multi-family buildings on approximately 26 acres of land with associated parking, walkways, amenities, and infrastructure. These Planning Board approvals and Building Permit filings will bring the project one step closer to realization and full execution of the Land Disposition and Development Agreement between the Town and the developer.

For the latest updates and to learn more, please visit <https://sudbury.ma.us/pcd/?p=2388>.

Eversource & Mass Central Rail Trail Stormwater Management Application

Co-applicants, NSTAR Electric Company d/b/a Eversource Energy (“Eversource”) and the Massachusetts Department of Conservation (“DCR”), have filed an application for a Major Stormwater Management Permit for construction of the Sudbury-Hudson Transmission Reliability and Mass Central Rail Trail Project. The Project includes construction of a new 115-kV underground transmission line and a multi-use path within an existing inactive railroad right-of-way. This will require removal of the existing rails and ties; vegetation clearing; grading; installation of the underground transmission line, duct bank, and manholes; implementing stormwater management features; and installing a 14-foot-wide gravel base. Subsequently, DCR proposes paving a 10-foot-wide rail trail; and finalizing stormwater management features and site restoration.

Along the 4.3 mile length in Sudbury, the project will disturb approximately 643,985 square feet (14.8 acres), including 221,410 square feet on slopes greater than 10 percent, within an approximate 2,367,103 square feet (54.4 acres) Project Locus (the MBTA right-of-way). The increase in impervious surface associated with the Project for the paved multi-use path is approximately 226,556 square feet.

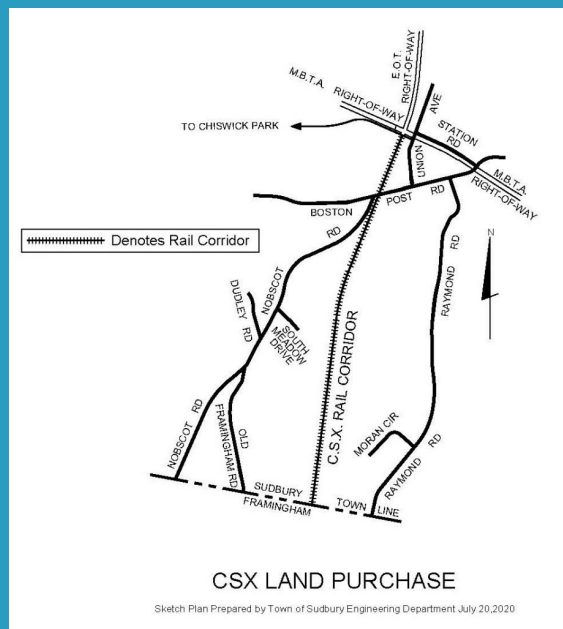
For more information and updates, please visit <https://sudbury.ma.us/planning/?p=2442>.

Town of Sudbury Reaches Agreement on Acquisition of CSX Corridor

On August 25, 2020, the Board of Selectmen approved the Purchase & Sale Agreement for the proposed acquisition of the CSX Corridor in Sudbury. The total cost of the acquisition is \$1,220,500. Town Meeting will be asked to cover the purchase price and estimated due diligence costs of \$1,145,500 and \$75,000, respectively. A Recreational Trails Grant and a MassTrails Grant have been secured to allocate \$400,000 to the purchase. The grant funds are reimbursements, so the funding request at the Town Meeting and Election will be a debt exclusion of \$820,500 and available cash of \$400,000, the later to be reimbursed by grants.

Learn more on the following page and at <https://sudbury.ma.us/csx>.

Acquisition of the CSX Corridor will go before Town Meeting (9/12/20) and Election (11/3/20) for authorization.

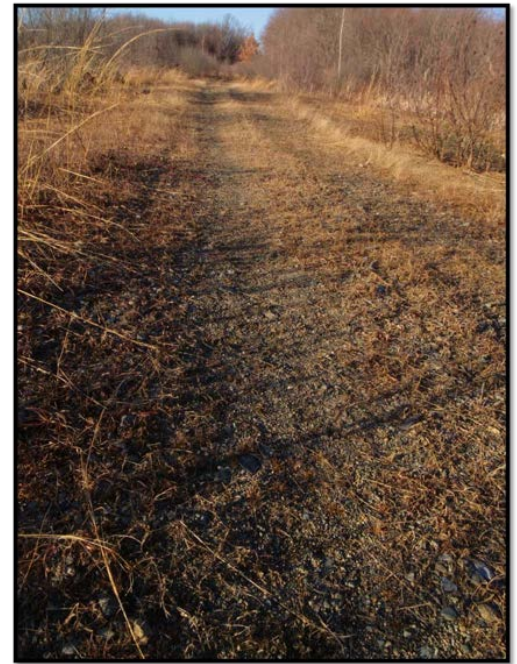


CSX Corridor Acquisition Project

The CSX Corridor is a former railroad corridor of 11.26 acres and 1.4 miles in length that runs north-south in south Sudbury. It is a linear corridor of approximately 60 feet wide that crosses Route 20, Boston Post Road and then extends through conservation and Sudbury Water District lands to the Framingham City line. The property is adjacent to abundant natural resources, is connected to other Town-owned properties, and offers a potential southward extension to the Bruce Freeman Rail Trail (BFRT). It is a priority for protection identified in the Town's 2009-2015 Open Space and Recreation Plan.

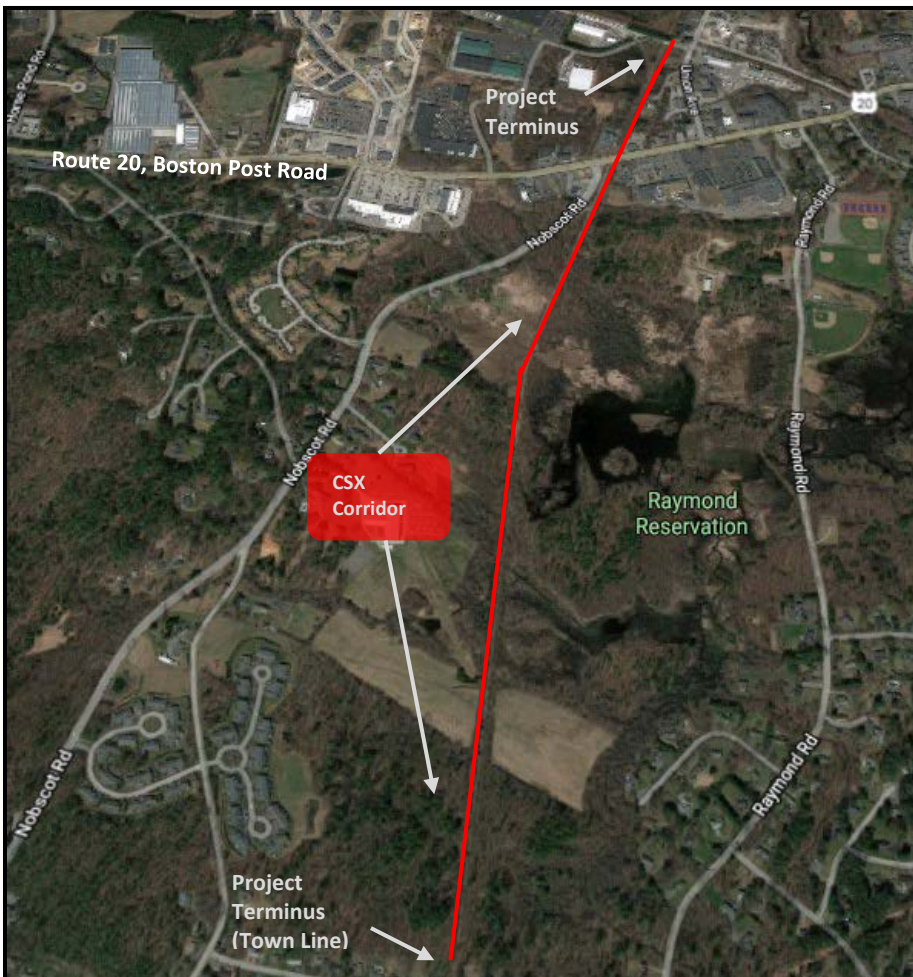
The Town has been in negotiations to acquire this property intermittently since 2001 when CSX set course to abandon the previously active rail corridor. Through the 1983 National Trails System Act (16 USC 1247 (d)), the Town and CSX agreed to negotiate the potential of railbanking instead of abandonment. Recent changes to Federal policy limit the Town's opportunity to continue negotiations with CSX to purchase the corridor.

A Purchase & Sale agreement has been negotiated for the purchase of the property. The total cost of the acquisition is \$1,220,500. Town Meeting will be asked to cover the purchase price and estimated due diligence costs of \$1,145,500 and \$75,000, respectively. A Recreational Trails Grant and a MassTrails Grant have been secured to allocate \$400,000 to the purchase. The grant funds are reimbursements, so the funding request at the Town Meeting and Election will be a debt exclusion of \$820,500 and available cash of \$400,000, the later to be reimbursed by grants.



Key Features

- Linear corridor
 - ±1.4 miles
 - ± 11.26 acres
- Conservation land access & buffer
- Critical drinking water & natural resource protection
- Potential BFRT extension
- Links neighborhoods, business districts & open spaces
- Use of the property to be decided by the Town



Important Dates:

September 12th
Town Meeting vote required to authorize the purchase

November 3rd
Ballot vote required to authorize spending

Learn More: SUDBURY.MA.US/CSX

Town of Sudbury ANNUAL TOWN MEETING

SAT, SEPT 12, 2020 | 9AM | LSRHS

Town Meeting Information

Prepare for Outdoor Town Meeting

2020 Annual Town Meeting has been rescheduled to Saturday, September 12, 2020. The Meeting will be held outdoors as a COVID-19 precautionary measure.

Pre-Recorded Presentations

In order to make outdoor Town Meeting as efficient as possible, many articles will be pre-recorded and not presented at the meeting itself.

Voters are asked to watch pre-recorded presentations in advance:

- [State of the Town Address](#)
- [Citations from the Massachusetts House of Representatives](#)
- [Community Preservation Act Overview](#)

- [Town Meeting Article Presentations](#) - Select an Article from the list, then click on "Prerecorded Presentation" under "Online Information."

COVID-19 Precautions

Seating will be spaced in accordance with COVID-19 regulations, and appropriate face coverings must be worn by all attendees. Portable restrooms and sanitizing materials will be available.

BRING

Face Coverings; Hand Sanitizer; Hat; Insect Repellent; Snacks/Lunch; Sunblock; Town Meeting Warrant (coming soon to your mailbox); Water

LEAVE AT HOME

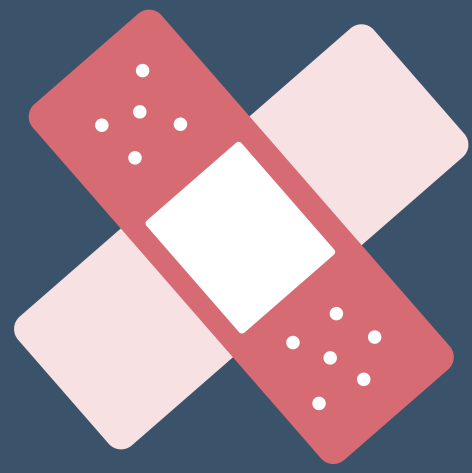
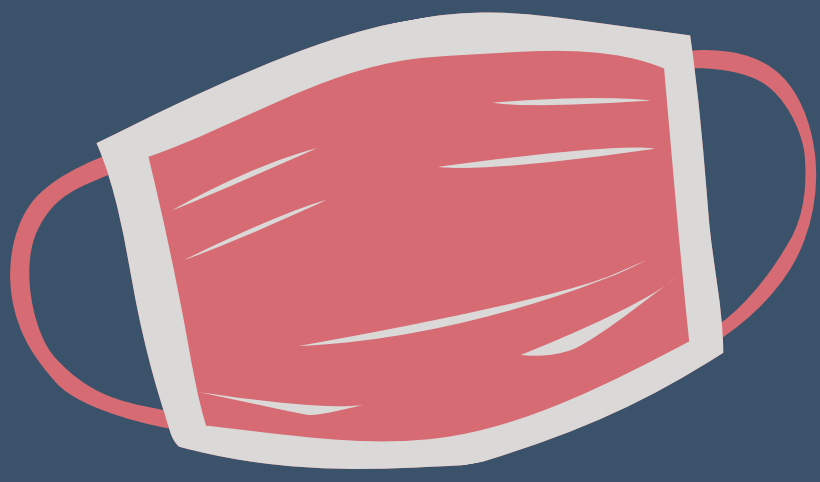
Large umbrellas (so as not to hinder others from viewing the meeting and being counted for a vote); Pets

Location

Town Meeting will be held at L-SRHS baseball diamond in the lower athletic field adjacent to the gymnasium building at the rear of the school, which is accessible by walking or by golf carts with drivers. Stationary microphone access will be available, and appropriate cleaning will take place. Seating on the field will be spaced according to social distancing guidelines. Folding chairs will be provided, however not all chairs will be in areas that provide shade. Voters are asked to plan accordingly and bring sun protection in the event they are not seated in a shaded area.

Learn More

Please visit the [Annual Town Meeting](#) page for details on Accessible Parking and Mobility Assistance, Hearing and Sight Impairments, Warrant Article information and more.



SUDBURY HEALTH DEPARTMENT

DRIVE-THROUGH FLU SHOT CLINIC

PROTECT YOURSELF AGAINST THE FLU

OCTOBER 2020

CURTIS MIDDLE SCHOOL

22 PRATTS MILL RD

SCHEDULE

Wed. Oct. 7 @ 1-4 PM

Sat. Oct. 17 @ 10 AM-4 PM

Wed. Oct. 21 @ 1-4 PM

Wed. Oct. 28 @ 1-4 PM

Senior Citizens (65+)

Sudbury Residents

Sudbury Residents

TBD - Based on Vaccine
Availability

LEARN MORE

- Advanced registration required: [sudbury.ma.us/health](https://www.sudbury.ma.us/health)
- Stay home if you are ill
- Call 978-440-5479 or visit [sudbury.ma.us/health](https://www.sudbury.ma.us/health) for more details

WWW.SUDBURY.MA.US/HEALTH