

TOWN OF SUDBURY

Office of the Town Manager
www.sudbury.ma.us

278 Old Sudbury Road
Sudbury, MA 01776-1843
978-639-3381
Fax: 978-443-0756

Email: townmanager@sudbury.ma.us

Melissa Murphy-Rodrigues, Esq.
Town Manager

Lt. Governor Karyn Polito
Office of the Governor
Massachusetts State House
24 Beacon Street
Room 280
Boston, MA 02133

Delivered electronically

March 14, 2018

Dear Lt. Governor Polito,

Thank you for your continued support of Sudbury during these extraordinary winter events over the last two weeks. We are appreciative of all the help we have received thus far from MEMA and the Governor's office.

As you know, these March storms have left Sudbury in a state of disrepair. We had damage to our infrastructure, rolling stock and buildings, as well as significant and devastating tree damage. The tree damage litters our public ways and walkways and leaves the town with a continued public safety hazard. Many of the hazards are now snow covered, but as melt begins, we anticipate serious and debilitating issues. Additionally, we have many branches about to fall or snap leading to even more dire public safety concerns. Finally, as I mentioned, we have serious concerns about the costs affiliated with the March storms. When we came into March, we already had a \$310,000 deficit in the town's snow and ice account, and we have just begun to understand the financial impact of this storm.

We have a small and exceptionally hard working Department of Public Works, and like our neighboring municipalities, we are challenged due to the number of storms that hit our community in such a short period. Many of the different utility contractors and media personnel informed my team that Sudbury was the worst they had seen and that our damage was comparable or worse than the damage to the Cape during Winter Storm Riley.

I have attached photos of some of our storm damage in order to give you a perspective on the damage that occurred in Sudbury. I have also attached some photos of our shelter. During the period in which our shelter was open, we serviced 340 individuals and served 225 meals. 10 residents stayed overnight.

Both the Board of Selectmen and I are proud of the exceptional work done by Town staff and thankful for the support we have received from the state. We recognize that we are just beginning the clean-up and we are respectfully requesting additional support from MEMA.

During the storm and during the direct aftermath, the Town of Sudbury was truly in a state of emergency. We are respectfully requesting that the Town of Sudbury be deemed a disaster area so that we can be eligible for additional funding and assistance. With your help, we have made progress, but the public safety issues persist.

I appreciate your consideration of this matter and look forward to hearing from you.

Best,

A handwritten signature in black ink, appearing to read "M. Rodrigues", with a long horizontal flourish extending to the right.

Melissa Rodrigues, Esq.

Town Manager

CC:

Board of Selectmen

Director Dan Nason

Director William Murphy

Chief Scott Nix

Chief John Whalen

Representative Gentile

Senator Eldridge

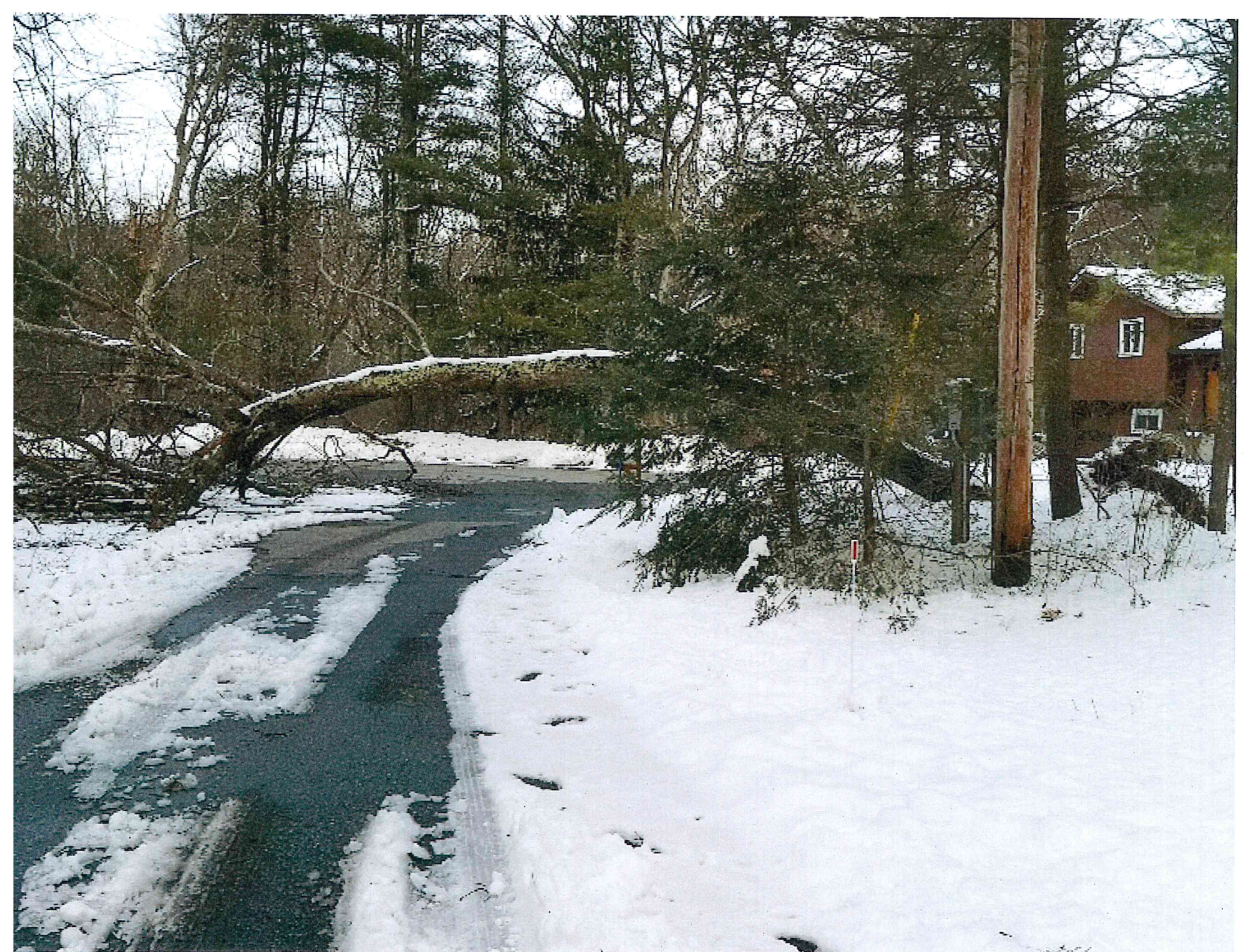
Senator Barrett

Christine Packard, Deputy Director MEMA

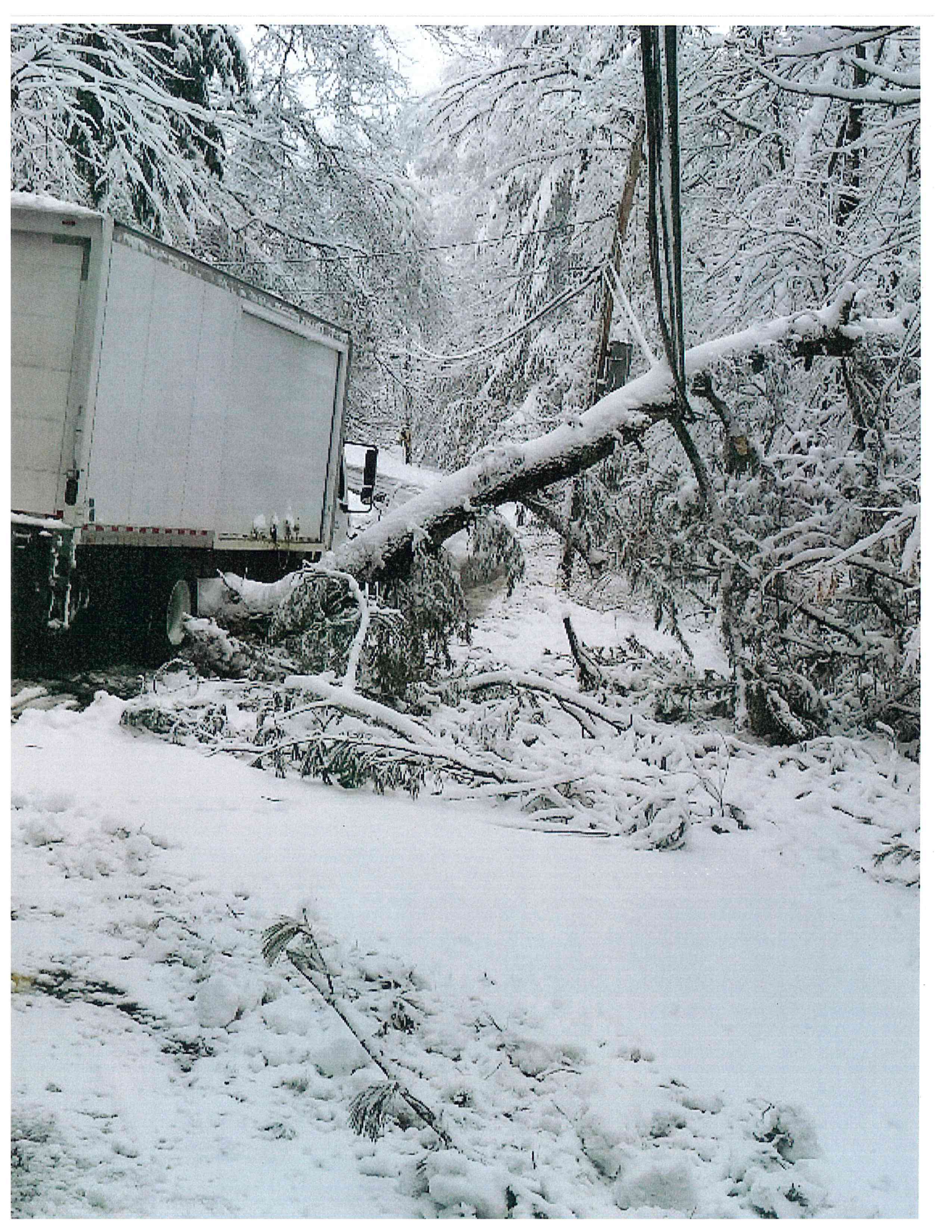
Mary Beth Groff, Chief of Staff MEMA

Kaitlyn Sprague, Legislative Director

Attachments





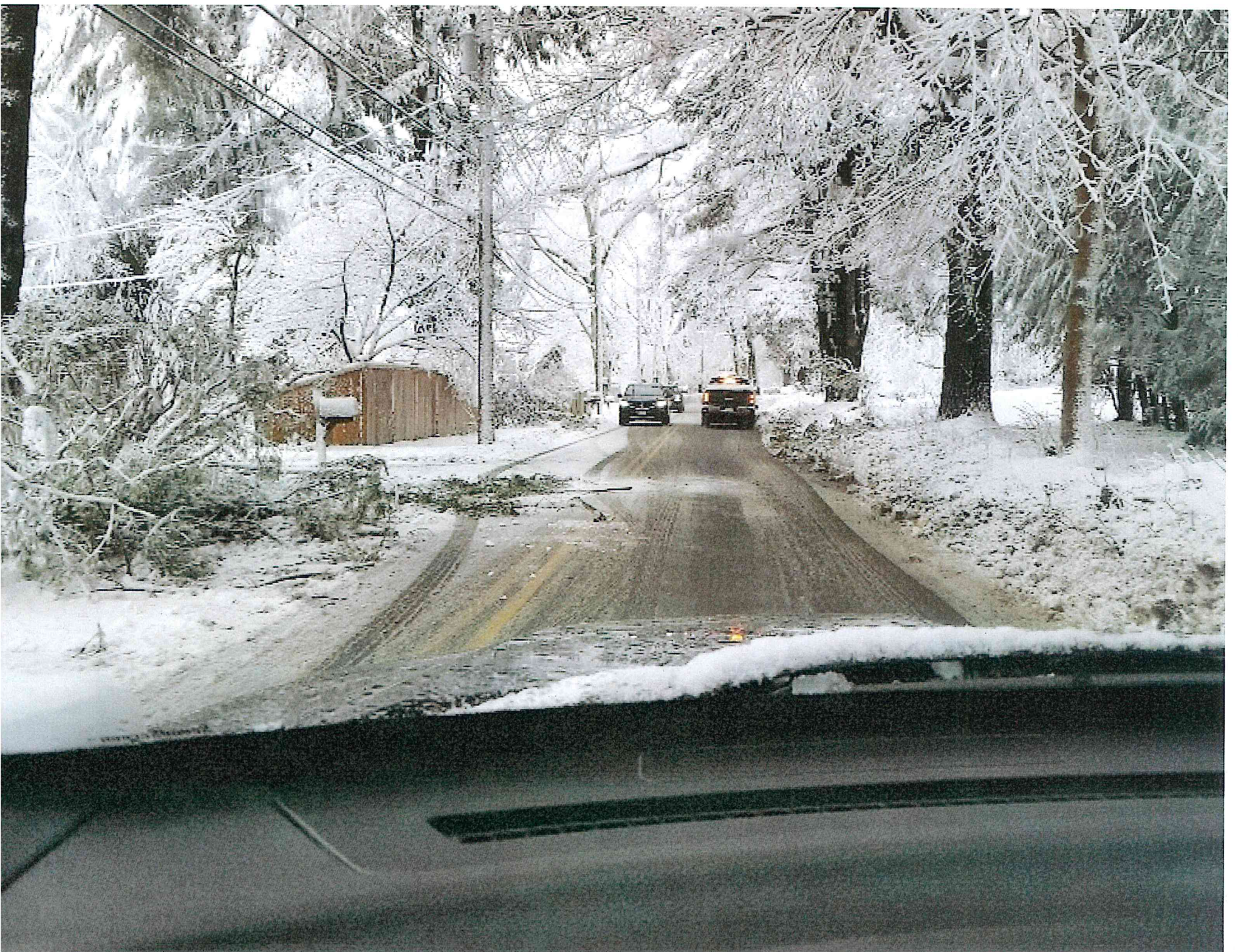




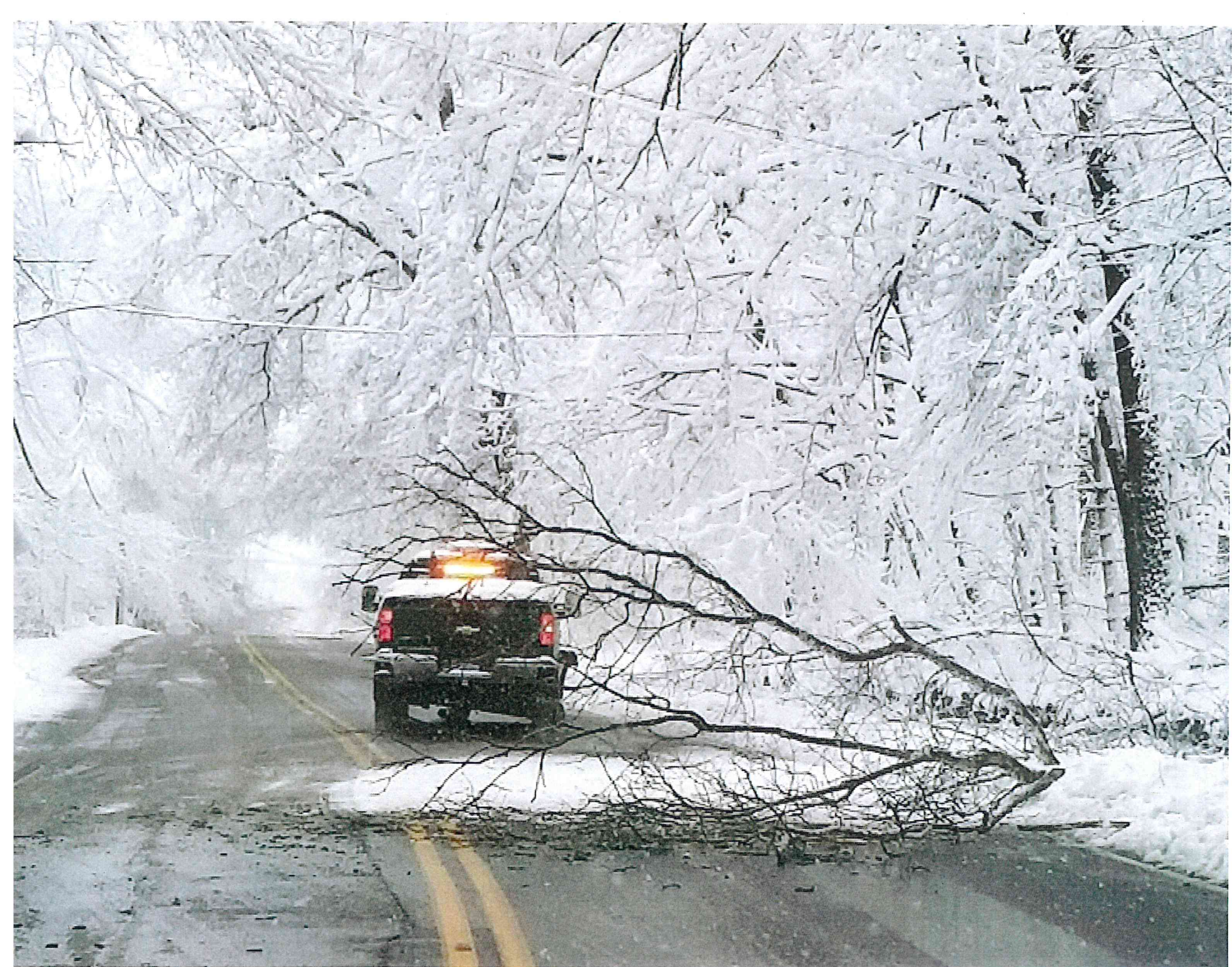


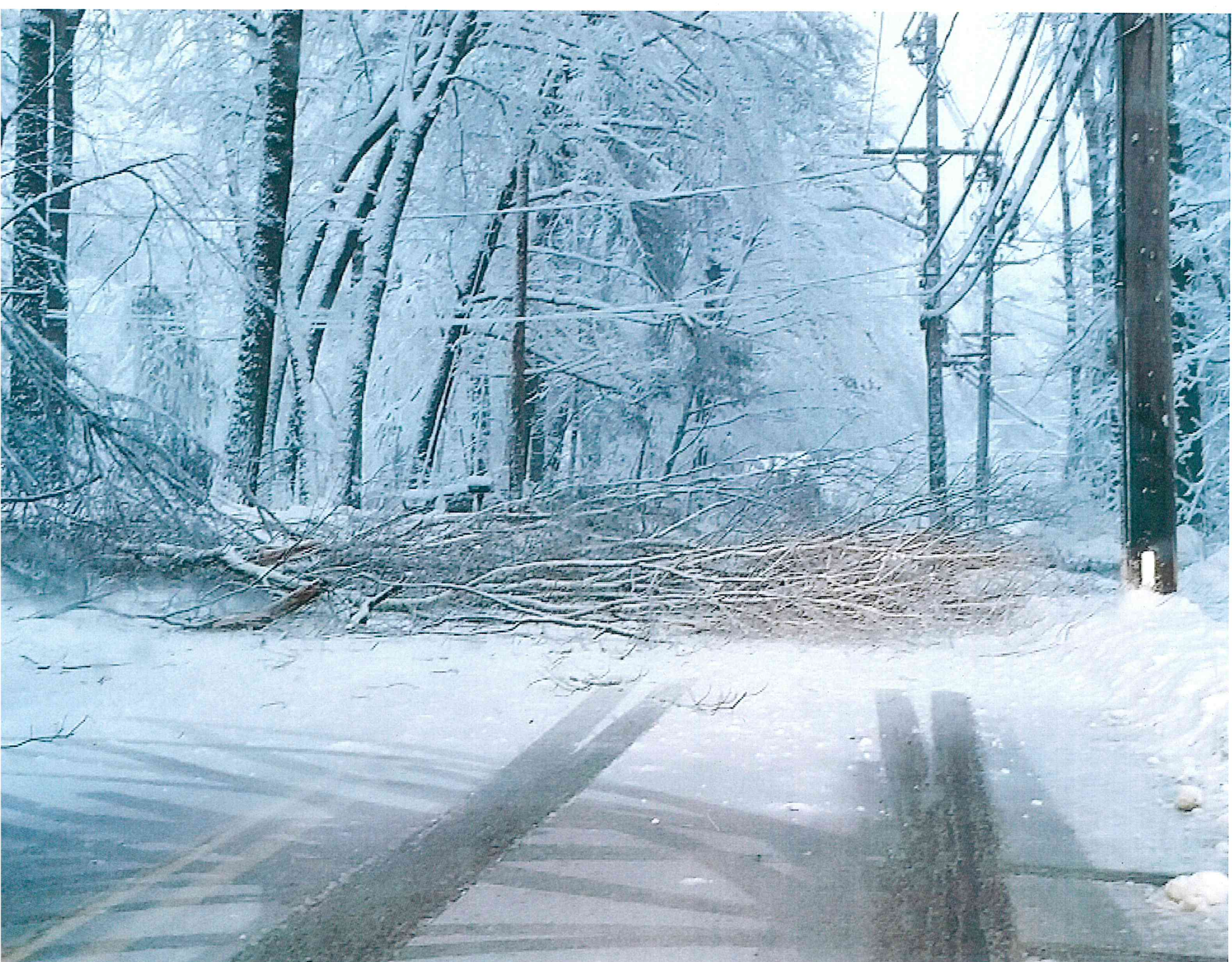




















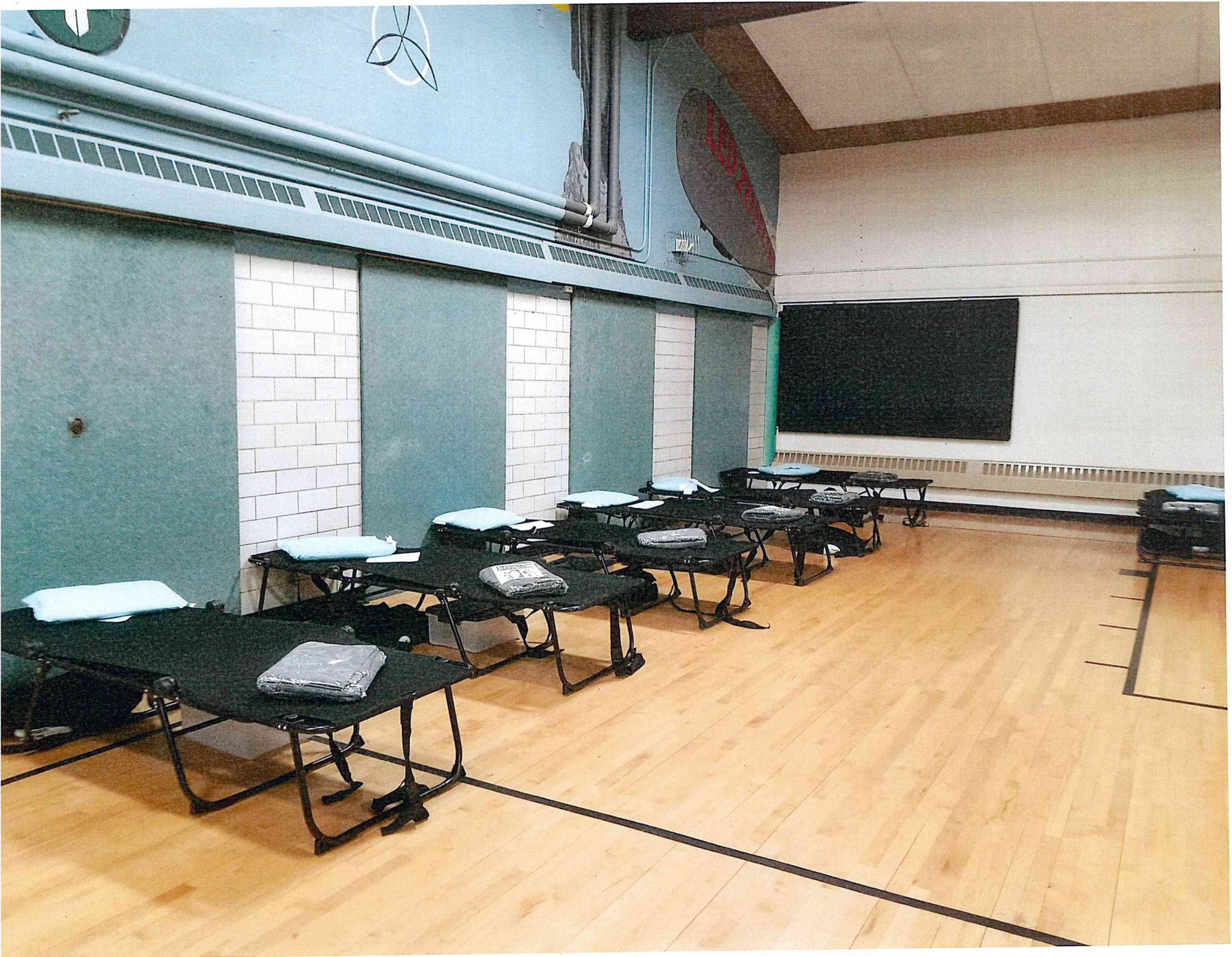






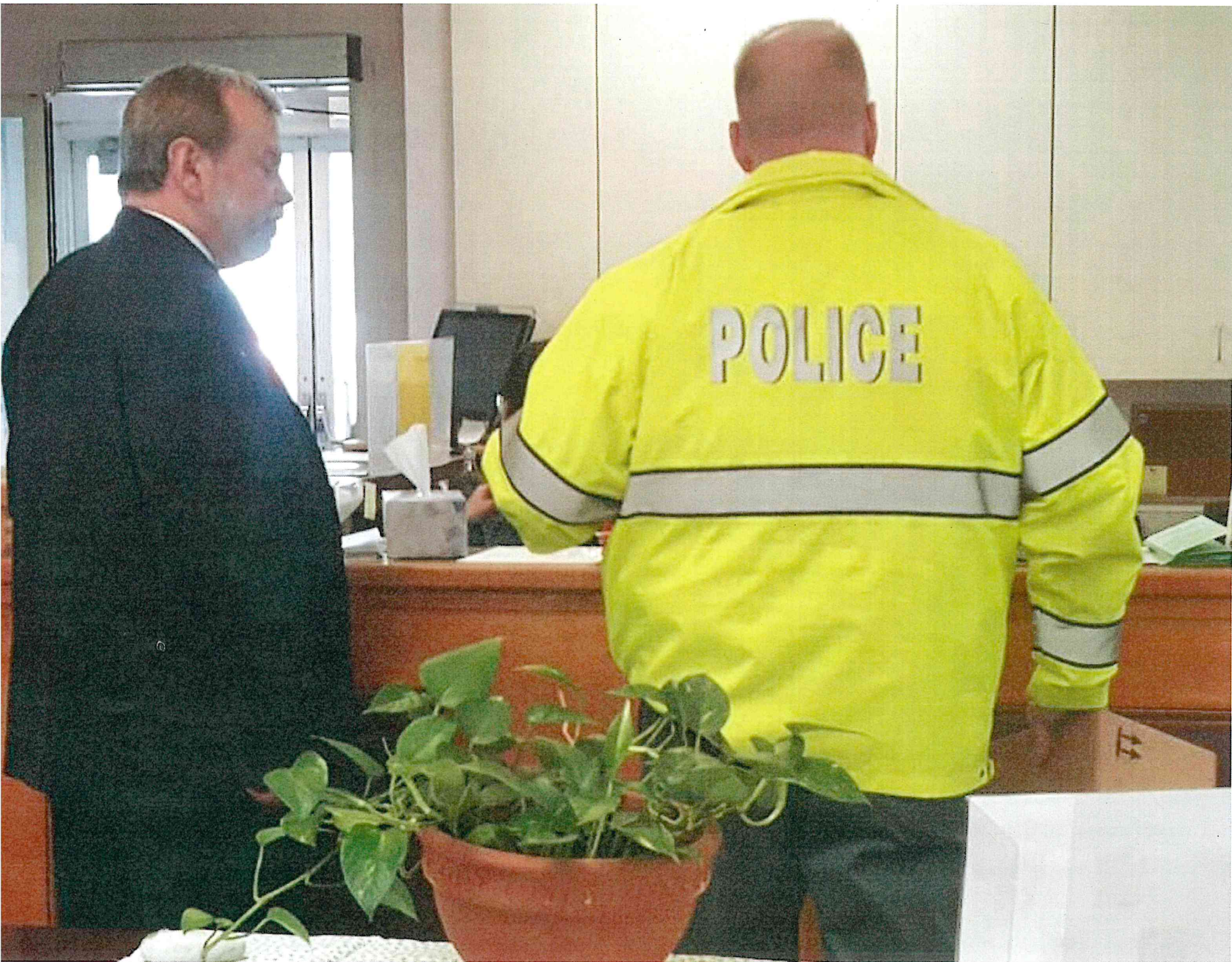












EXIT



