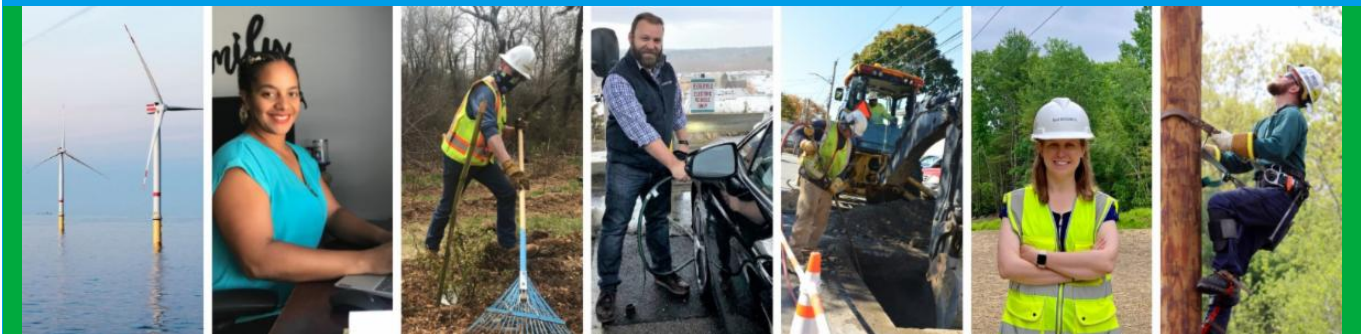


From: Project Outreach <brianna.germain@eversource.com>
Sent: Thursday, December 14, 2023 10:25 AM
To: Select Board
Subject: Project Update (12/14/23) - Eversource 115-kV Transmission Line



Visit the
Project
Website



Eversource 115-kV Project Update

Greetings!

Over the next week, you can expect to see construction activity at work sites in Sudbury and Hudson on the Eversource 115-kilovolt (kV) Underground Transmission Line Project.

Work Hours

Approved work hours are 7 a.m. to 6 p.m., **Monday to Friday** but crews are working from **7 a.m. to 4 p.m.** in most areas. Occasional project activities may extend beyond the approved hours, due to unforeseen circumstances, based on approval from local officials. Crews work between manholes (MHs) that have been placed along the project route. For a closer look, [view the project map](#).

Hudson

- **At Bridge 130, between Chestnut and Main Street**, crews have started pouring abutment footings. Next crews will begin apron and cap installations.

- **Between Wilkins and Chestnut St**, crew will be in the area working on the final grading.
- **On Forest Ave**, between MH2 and MH4, crews have begun proofing previously installed conduit, or duct bank, to ensure it's clear of obstructions prior to cable installation. This work will not require a detour.
- **Crews has begun to access manhole locations underground in Hudson to proof the recently installed conduit**. This process takes several hours and is in advance of the cable installation which will begin in early 2024. Property owners near these activities have received additional notifications and can expect to see crews intermittently at manhole locations

Sudbury

- **Between the Town Line and Dutton Road**, crews are installing duct bank between MH16 and MH17.
- **At Bridge 128, between the Town Line and Dutton Road**, crews are continuing to work on the bridge rebuild.
- **Between Union Ave and Boston Post Road**, next week crews are installing duct bank between MH24 and MH 25, south of Station Road.
- **Between Bridge 127 and the Sudbury Substation**, crews are installing duct bank between MH27 and MH28.
- **Starting soon**, crews will begin accessing manhole locations underground in Sudbury to proof the recently installed transmission conduit. This process takes several hours and is in advance of the cable installation which will begin in early 2024. Property owners near these activities have received additional notifications and can expect to see crews intermittently at manhole locations.

**Due to the complexities of underground construction and weather, the two-week schedule described above is subject to change.*

Construction Photos

Pictured is duct bank installation in the Sudbury inactive MBTA corridor.



Stay Informed

Eversource is committed to being a good neighbor and doing any work with respect for you and your property. If you have questions, please contact us directly or click on one of the resources below.

- Dial **1-833-836-0302**
- Email **ProjectInfoMa@eversource.com**
- Visit the [website](#) for this project.
- View the [interactive project map](#).
- View information on [rail trail access during construction](#).
- Visit the [Town of Sudbury](#) or [Town of Hudson](#) website for more details about the Project.
- **Field outreach representatives** will be in touch with notices updating you on construction activities.
- Did someone forward this email? If so, [sign up to receive future updates](#)

Si necesita que le traduzcan esta notificación, envíenos un correo electrónico a Projectinfoma@eversource.com y escribe "S-H" en el asunto.

如果您需要本通知的翻譯版本，請寄送電郵至 Projectinfoma@eversource.com，並在主題欄中輸入 "S-H"

如果您需要本通知的翻译版本，请发电子邮件到 Projectinfoma@eversource.com，并在主题栏中输入 "S-H"

EVERSOURCE

Address: 247 Station Drive
Westwood, MA 02090



Phone: 1-833-836-0302

[Email Us](#)

Eversource | 247 Station Drive, Westwood, MA 02090

[Unsubscribe selectboard@sudbury.ma.us](mailto:selectboard@sudbury.ma.us)

[Update Profile](#) | [Constant Contact Data Notice](#)

Sent by brianna.germain@eversource.com powered by

