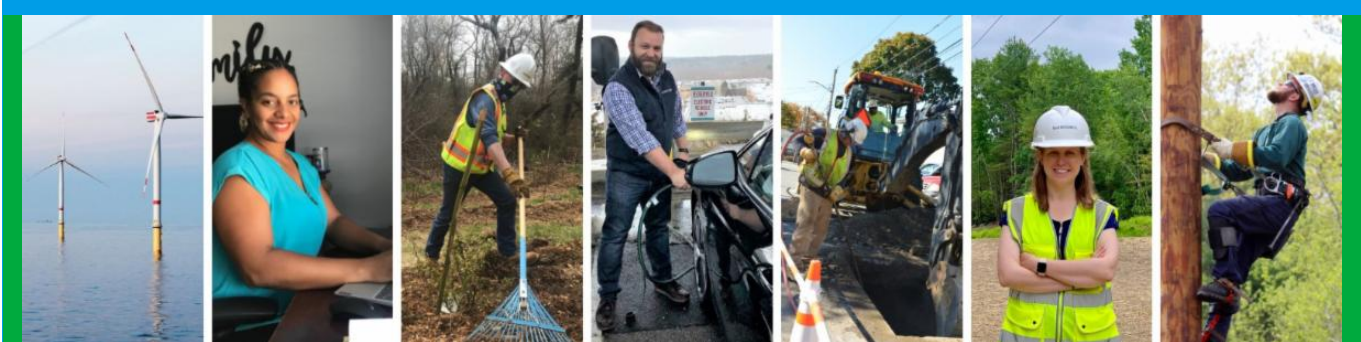


From: Eversource Outreach <miles.lang-kennedy@eversource.com>
Sent: Wednesday, April 12, 2023 12:40 PM
To: Select Board
Subject: Project Update (04/12/23) - Eversource 115-kV Transmission Line



Project
Website



Eversource 115-kV Transmission Project Update

Greetings!

Members of the community will see continued construction activities at several sites related to the Eversource 115-kilovolt (kV) Underground Transmission Line Project in Sudbury and Hudson. Eversource asks people to avoid walking on the inactive Massachusetts Bay Transportation Authority rail corridor. ***What follows is an update to a communication that was shared earlier this week.***

Work Hours

Approved work hours are 7 a.m. to 6 p.m., Monday to Friday but crews from BOND Civil & Utility Construction and their subcontractors (ET&L Construction, M-O-N Landscaping, and Moosehead) are working from 7 a.m. to 3:30 p.m. There will be no work on April 17. Occasional work may extend beyond the approved hours based on approval from municipal staff. [View the Project map](#) for additional details on work crew locations.

Hudson

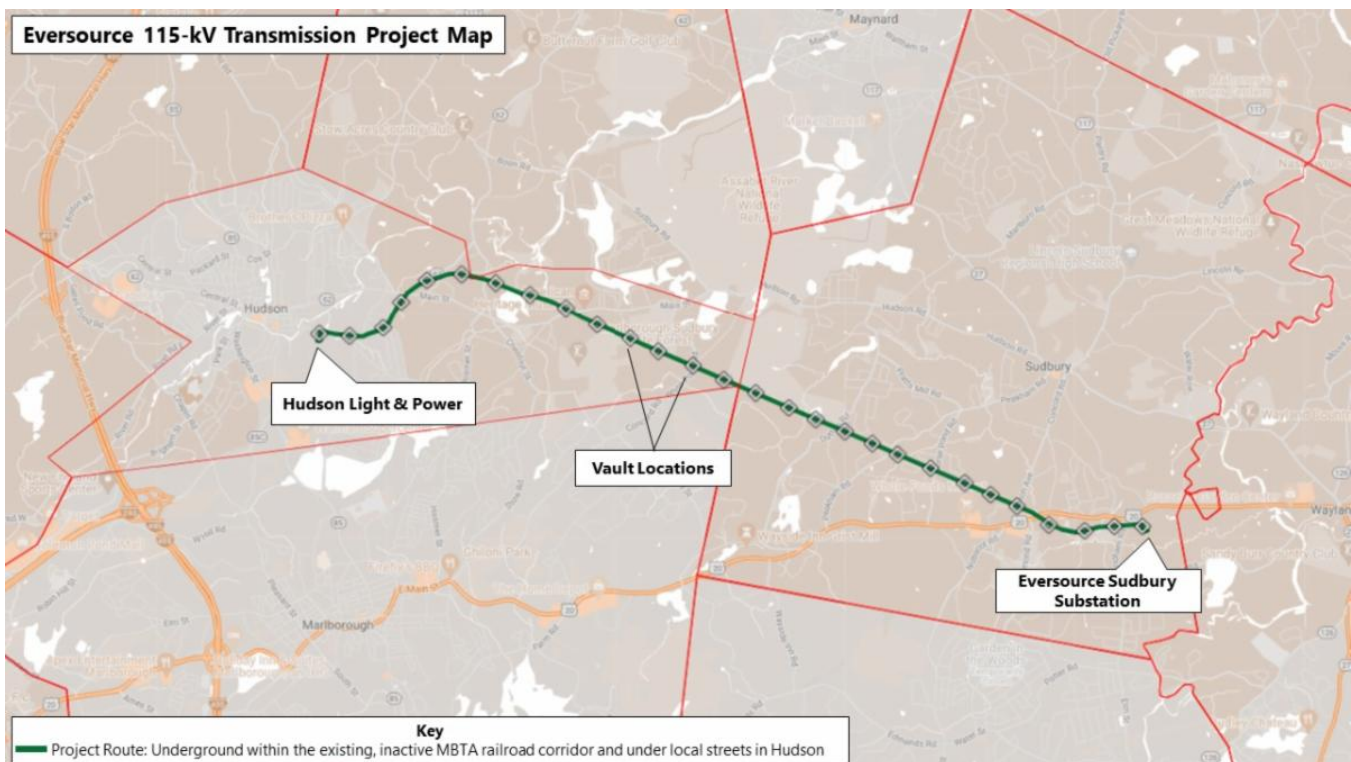
- **On Parmenter Road, near the Charter Oak Country Club**, crews are installing a small section of duct bank in the road (roughly 30 feet), to connect two sections

of duct bank recently installed in the corridor. Work in this area should be completed soon. **Next week**, crews will perform similar activities on a section of line crossing Main Street in Hudson.

- **On Forest Avenue, between Richardson Street and Old North Road**, crews will begin installing another cable vault (MH3) in the road starting as early as April 18. Work includes excavating an opening in the roadway, installing the vault with a crane, and backfilling the trench. See the Traffic Management Section below for more information. Crews will be working from **7 a.m. to 5 p.m.** during the installation of the cable vault, from Tuesday to Friday.
- **In the inactive MBTA corridor**, crews are excavating, installing duct bank, and backfilling trenches between two cable vaults (MH7 and MH8) north of Main Street near Chestnut Street.
- **Between Parmenter Road and White Pond Road**, crews have started to excavate, install duct bank, and backfill trenches between MH11 and MH12, which are both east of Parmenter Road. Starting next week, crews will start performing similar activities from MH12 to MH13, between Parmenter Road and White Pond Road.

Sudbury

- **In the inactive MBTA corridor, between Horse Pond Road and Union Avenue**, grading of the limits of work will resume next week.
- **From Boston Post Road to the Sudbury Substation**, crews will be grading the limits of work for the next several weeks.



Traffic Management



Due to the Forest Avenue closure needed to install this cable vault (MH3), cars coming to Forest Avenue from the north will detour down Richardson Street to Causeway Street, then left onto Old North Road, to get back to Forest Avenue. Cars traveling south on Forest Avenue will be directed to take Old North Road to get to Causeway Street, and then will detour right on Richardson Street to get back to Forest Avenue.

Stay Informed

Eversource is committed to being a good neighbor and doing any work with respect for you and your property. If you have questions, please contact us directly or click on one of the resources below to learn more about the project.

- Dial **1-833-836-0302** or email ProjectInfoMa@eversource.com with any questions or concerns.
- Visit the [website](#) for this project.
- View the [interactive project map](#).
- View information on [rail trail access](#) during construction.
- Visit the [Town of Sudbury](#) or [Town of Hudson](#) website to see additional resources.
- **Field outreach representatives** will be in touch with notices updating you on construction activities.

Did someone forward this email? If so, [sign up to receive future updates](#).

Si necesita que le traduzcan esta notificación, envíenos un correo electrónico a ProjectinfoMa@eversource.com y escribe “[S-H]” en el asunto.

如果您需要本通知的翻譯版本，請寄送電郵至 ProjectinfoMa@eversource.com，並在主題欄中輸入 “[S-H]”

如果您需要本通知的翻译版本，请发电子邮件到 ProjectinfoMa@eversource.com，并在主题栏中输入 “[S-H]”



Address: 247 Station Drive
Westwood, MA 02090
Phone: 1-833-836-0302



[Email Us](#)

Eversource | 247 Station Drive, Westwood, MA 02090

[Unsubscribe selectboard@sudbury.ma.us](mailto:Unsubscribe_selectboard@sudbury.ma.us)

[Update Profile](#) | [Constant Contact Data Notice](#)

Sent by miles.lang-kennedy@eversource.com powered by



Try email marketing for free today!