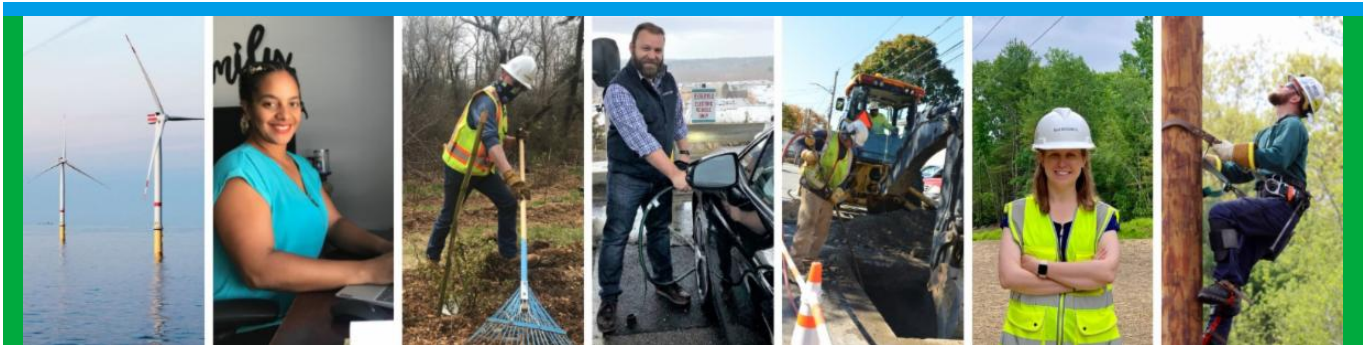

From: Eversource Outreach <miles.lang-kennedy@eversource.com>
Sent: Wednesday, March 29, 2023 10:30 AM
To: Select Board
Subject: Project Update (03/29/23) Eversource 115-kV Transmission Line



[Project Website](#)



Eversource 115-kV Transmission Project Update

Greetings!

Members of the community can expect to see continued construction and other enabling activities in Hudson and Sudbury related to the Eversource 115-kilovolt (kV) Underground Transmission Line Project. Eversource asks people to avoid walking on the inactive Massachusetts Bay Transportation Authority (MBTA) rail corridor.

Work Hours

Approved work hours are 7 a.m. to 6 p.m., Monday to Friday but crews from BOND Civil & Utility Construction and their subcontractors (ET&L Construction, M-O-N Landscaping, and Moosehead) are working from **7 a.m. to 3:30 p.m.** Occasional work may extend beyond the approved hours, due to unforeseen circumstances, based on approval from municipal staff.

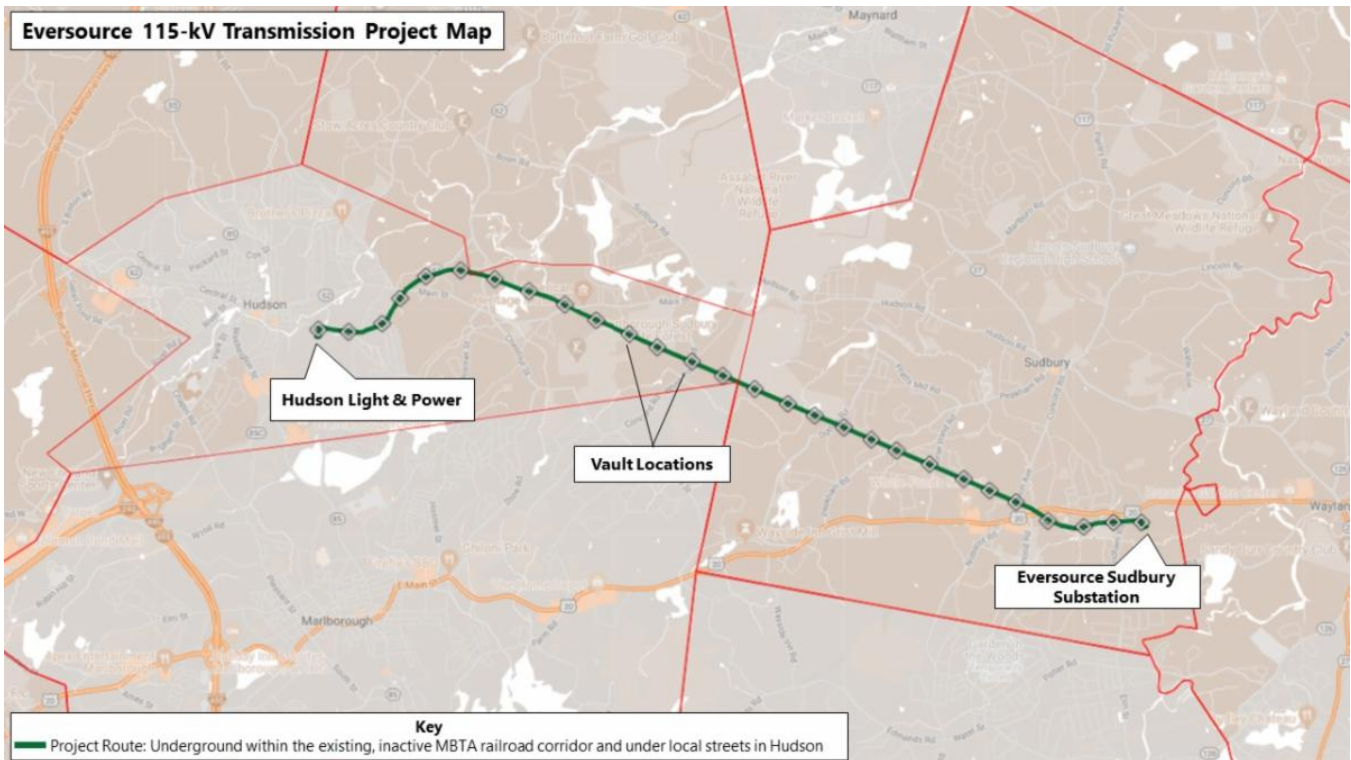
Below is an overview of the active work zones. [View the Project map](#) for additional details on the location of work crews.

Hudson

- **Starting on April 3 on Forest Avenue near Glendale Road**, construction crews will begin the installation of a cable vault (MH4) in the road. Cable vaults, also called manholes (MH), are openings in an underground duct system that houses electrical equipment. The opening is large enough for a person to enter on a ladder. Work in this area will last for one week and includes excavating an opening in the roadway, installing the vault with a crane, and backfilling the trench. After this vault is installed, crews will move to placing the other two vaults (MH3 and MH2) in the roadway.
- **Near Wilkins Street and the Assabet River Trailhead in the MBTA corridor**, crews are installing another cable vault (MH5) and these activities should be completed early next week.
- **In the inactive MBTA corridor, between Bridge 130 and Main Street**, crews are excavating, installing duct bank, and backfilling trenches between MH8 and MH9 north of Main Street. Work in this segment should be completed this week. Between two other vaults near Chestnut Street, MH7 and MH8, crews will be completing similar activities (excavating, installing duct bank, and backfilling trenches) for the next three to four weeks.

Sudbury

- **From the Town line to Bridge 128 in the MBTA corridor**, crews have completed the grading of the limits of work and will start removing railroad rails and ties next week.
- **Between Horse Pond Road and Union Avenue**, crews will start grading of the limits of work next week.
- **Between Union Ave and Boston Post Road**, crews are grading the limits of work and should be completed next week.
- **Between Boston Post Road and Bridge 127**, crews are nearly finished with the removal of railroad rails and ties. After this activity, grading of the limits of work will commence in this segment of the corridor.
- **Between Bridge 127 and the Sudbury Substation**, crews are grading the limits of work and should be completed by the end of next week.



Typical Construction

Pictured is a crew in Hudson installing a cable vault (MH6) in the MBTA corridor recently.



Stay Informed

Eversource is committed to being a good neighbor and doing any work with respect for you and your property. If you have questions, please contact us directly or click on one of the resources below to learn more about the project.

- Dial **1-833-836-0302** or email ProjectInfoMa@eversource.com with any questions or concerns.
- Visit the [website](#) for this project.
- View the [interactive project map](#).
- View information on [rail trail access](#) during construction.
- Visit the [Town of Sudbury](#) or [Town of Hudson](#) website to see additional resources.
- **Field outreach representatives** will be in touch with notices updating you on construction activities.

Did someone forward this email? If so, [sign up to receive future updates](#).

Si necesita que le traduzcan esta notificación, envíenos un correo electrónico a ProjectInfoMa@eversource.com y escribe “[S-H]” en el asunto.

如果您需要本通知的翻譯版本，請寄送電郵至 ProjectInfoMa@eversource.com，並在主題欄中輸入 “[S-H]”

如果您需要本通知的翻译版本，请发电子邮件到 ProjectInfoMa@eversource.com，并在主题栏中输入 “[S-H]”

EVERSOURCE

Address: 247 Station Drive
Westwood, MA 02090
Phone: 1-833-836-0302



[Email Us](#)

Eversource | 247 Station Drive, Westwood, MA 02090

[Unsubscribe selectboard@sudbury.ma.us](mailto:Unsubscribe_selectboard@sudbury.ma.us)

[Update Profile](#) | [Constant Contact Data Notice](#)

Sent by miles.lang-kennedy@eversource.com powered by



Try email marketing for free today!