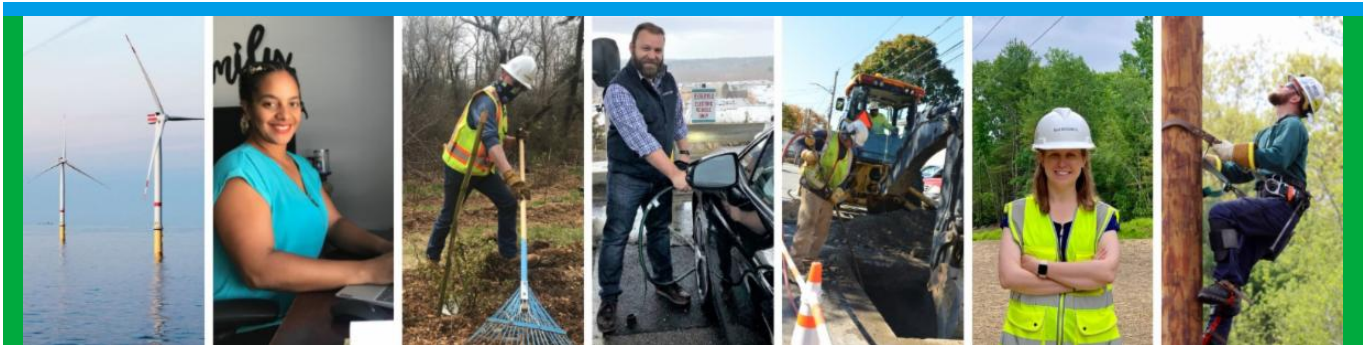


From: Eversource Outreach <miles.lang-kennedy@eversource.com>
Sent: Wednesday, February 15, 2023 10:24 AM
To: Select Board
Subject: Project Update (02/15/23) Eversource 115-kV Transmission Line



[Project Website](#)



Eversource 115-kV Transmission Project Update

Greetings!

Eversource and its contractor BOND Civil & Utility Construction and their subcontractors (ET&L Construction, M-O-N Landscaping Inc., and Moosehead LLC) resumed construction on the 115-kilovolt (kV) Underground Transmission Line Project in Hudson and Sudbury. Eversource asks people to avoid walking on and crossing the inactive Massachusetts Bay Transportation Authority (MBTA) rail corridor. Construction is not expected to interrupt electric service.

In the corridor, work starts with vegetation clearing, followed by placing erosion controls and rail/tie removal. From there, grading of the limits of work happens. After these enabling activities are finished, crews excavate and install cable vaults and duct bank.

Work Hours

Approved work hours are 7 a.m. to 6 p.m., Monday to Friday but crews are working from **7 a.m. to 3:30 p.m.** Occasional work may extend beyond the approved hours, due to unforeseen circumstances, based on approval from local officials. There will be **no construction activities on Monday, February 20.**

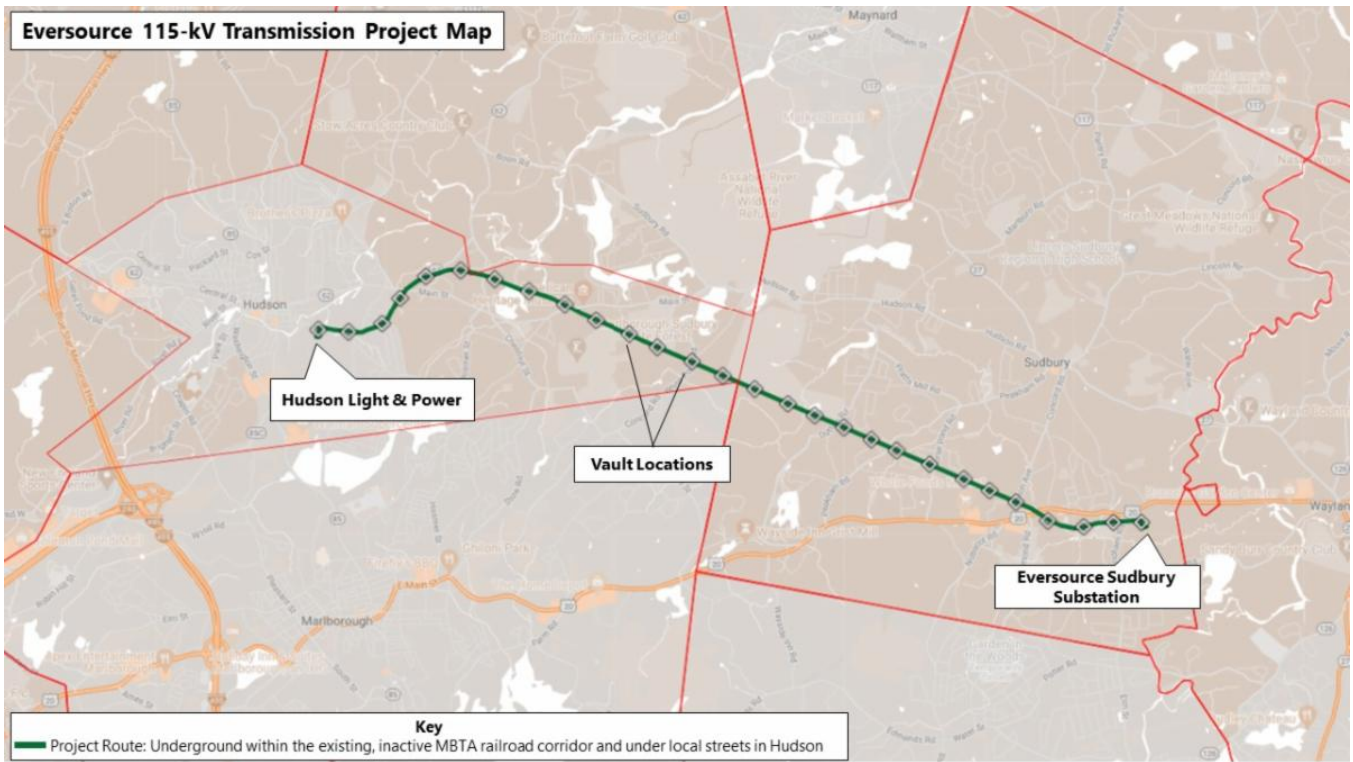
Below is an overview of the active and upcoming work zones in Hudson and Sudbury. [View the Project map](#) for additional details on the location of work crews.

Hudson

- **In the inactive MBTA rail corridor from Wilkins Street to Bridge 130**, crews are completing the final grading of the limits of work and are installing a cable vault (MH7) east of Chesnut Street.
- **Between Bridge 130 and Main Street**, the installation of MH9 is ongoing and will be completed by the end of the week.
- **From Main Street to Parmenter Road in the corridor**, between MH10 and MH11, crews are excavating trenches, installing a protective tube called conduit and backfilling trenches. Conduit, sometimes called duct bank, will house the transmission line once installed.

Sudbury

- **From the Town line to Dutton Road in the corridor**, crews are in the process of rail/tie removal and will start to grade the limits of work.
- **Between Dutton Road to Peakham Road**, crews are removing rails and ties in the corridor.
- **From Peakham Road to Horse Pond Road**, installation of erosion controls is complete in this segment of the corridor and rail/tie removal has begun.
- **From Horse Pond Road to Union Avenue**, vegetation removal is ongoing which will be followed by placing erosion controls to mark the limits of work.
- **Between Union Avenue and Boston Post Road**, vegetation clearing in this segment of the corridor will start toward the end of next week
- **Between Bridge 127 and the Sudbury Substation**, grading of the limits of work is ongoing.
- **At the Sudbury Substation**, excavation is happening to build foundations for new structures that will be installed on Eversource property inside the fence line.



Typical Construction

Pictured is a crew installing duct bank in Hudson, between Parmenter Road and White Pond Road.



Stay Informed

Eversource is committed to being a good neighbor and doing any work with respect for you and your property. If you have questions, please contact us directly or click on one of the resources below to learn more about the project.

- Dial **1-833-836-0302** or email ProjectInfoMa@eversource.com with any questions or concerns.
- Visit the [website](#) for this project.
- View the [interactive project map](#).
- View information on [rail trail access](#) during construction.
- Visit the [Town of Sudbury](#) or [Town of Hudson](#) website to see additional resources.
- **Field outreach representatives** will be in touch with notices updating you on construction activities.

Did someone forward this email? If so, [sign up to receive future updates](#).

Si necesita que le traduzcan esta notificación, envíenos un correo electrónico a ProjectInfoMa@eversource.com y escribe “[S-H]” en el asunto.

如果您需要本通知的翻譯版本，請寄送電郵至 ProjectInfoMa@eversource.com，並在主題欄中輸入 “[S-H]”

如果您需要本通知的翻译版本，请发电子邮件到 ProjectInfoMa@eversource.com，并在主题栏中输入 “[S-H]”

EVERSOURCE

Address: 247 Station Drive
Westwood, MA 02090
Phone: 1-833-836-0302



[Email Us](#)

Eversource | 247 Station Drive, Westwood, MA 02090

[Unsubscribe selectboard@sudbury.ma.us](mailto:Unsubscribe_selectboard@sudbury.ma.us)

[Update Profile](#) | [Constant Contact Data Notice](#)

Sent by miles.lang-kennedy@eversource.com powered by



Try email marketing for free today!