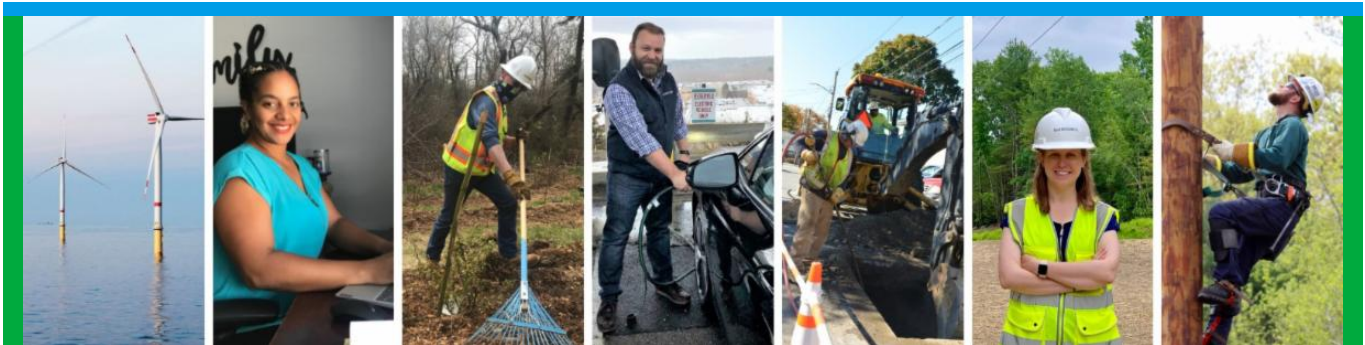


From: Eversource Outreach <miles.lang-kennedy@eversource.com>
Sent: Wednesday, January 25, 2023 10:05 AM
To: Select Board
Subject: Project Update (01/25/23) Eversource 115-kV Transmission Line



[Project Website](#)



Eversource 115-kV Transmission Project Update

Greetings!

Eversource and its contractor BOND Civil & Utility Construction and their subcontractors (ET&L Construction, M-O-N Landscaping Inc., and Moosehead LLC) resumed construction on the 115-kilovolt (kV) Underground Transmission Line Project in Hudson and Sudbury. Eversource asks people in the area to avoid walking along and crossing the inactive Massachusetts Bay Transportation Authority (MBTA) rail corridor. Construction is not expected to interrupt electric service.

Work Hours

Approved work hours are 7 a.m. to 6 p.m., Monday to Friday but crews are working from **7 a.m. to 3:30 p.m.** Occasional work may extend beyond the approved hours based on approval from local officials.

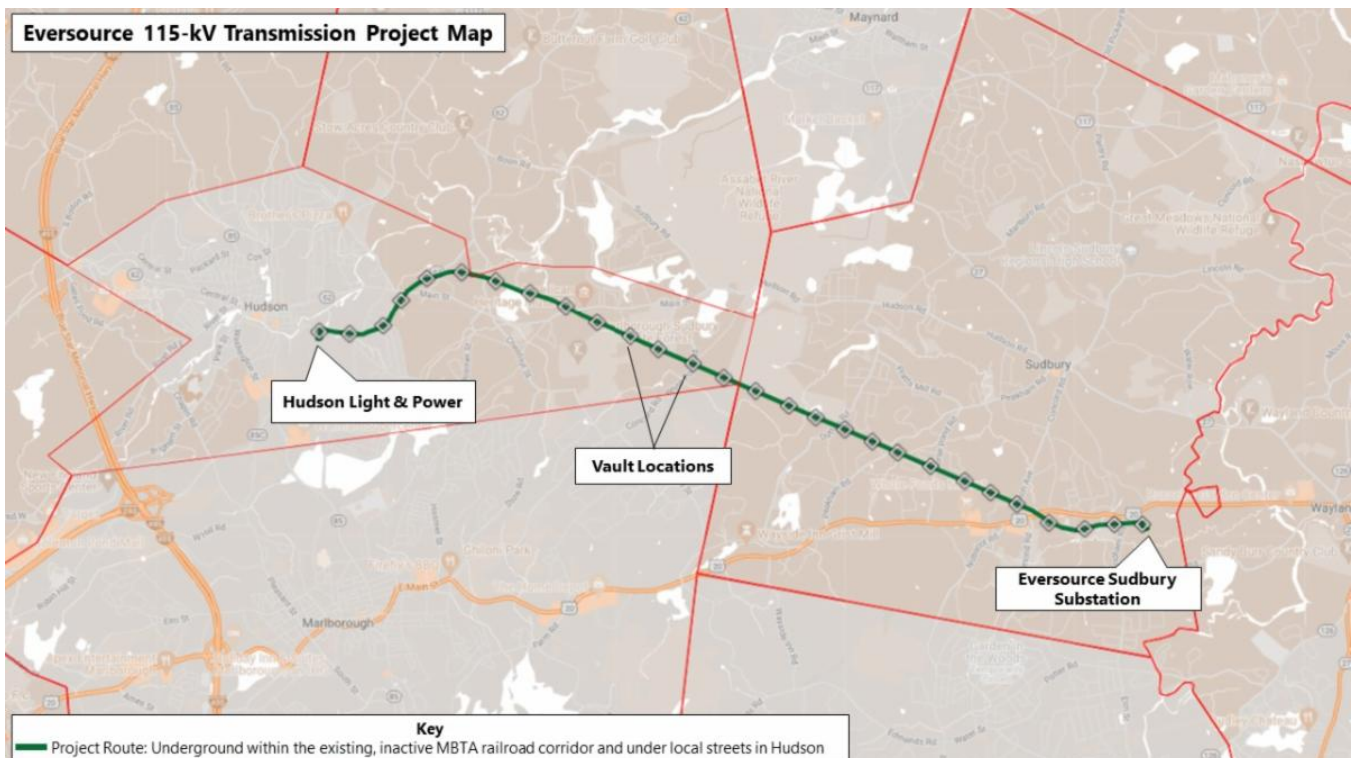
What follows below is an overview of the active and upcoming work zones in Hudson and Sudbury.

Hudson

- **In the inactive MBTA rail corridor from Wilkins Street to Bridge 130**, crews are completing the removal of rails/ties this week. Starting next week, grading of the limits of work will resume for the next several weeks.
- **Between Parmenter Road and White Pond Road in the corridor**, crews are installing MH13 (a cable vault) near the White Pond Road crossing. In the same vicinity, additional crews will be excavating and beginning to place duct bank, followed by backfilling of the trench.
- **Between Main Street and Parmenter Road in the corridor**, another cable vault (MH10) will be installed starting at the end of next week. A cable vault is an opening in an underground duct bank system that houses electrical infrastructure. The opening allows a person to enter to perform maintenance and is often called a manhole (MH). [View the Project map](#) for more details on the locations of work crews.

Sudbury

- **In the inactive MBTA rail corridor between the Sudbury Substation and Bridge 127**, erosion controls are being installed and rail/tie removal is in process. Grading of the limits of work will start in mid-February.
- **Between Bridge 128 and Dutton Road**, vegetation clearing is ongoing which will be followed by rail/tie removal and erosion controls.
- **From Dutton Road to Peakham Road**, the clearing of vegetation is expected to start next week followed by the installation of erosion controls.
- **Off Boston Post Road at the Sudbury Substation**, excavation is happening to build foundations for new structures that will be installed on Eversource property inside the fence line.



Typical Construction

Pictured is the inactive MBTA corridor standing at the Sudbury/Hudson Town line.



Stay Informed

Eversource is committed to being a good neighbor and doing any work with respect for you and your property. If you have questions, please contact us directly or click on one of the resources below to learn more about the project.

- Dial **1-833-836-0302** or email ProjectInfoMa@eversource.com with any questions or concerns.
- Visit the [website](#) for this project.
- View the [interactive project map](#).
- View information on [rail trail access](#) during construction.
- Visit the [Town of Sudbury](#) or [Town of Hudson](#) website to see additional resources.
- **Field outreach representatives** will be in touch with notices updating you on construction activities.

Did someone forward this email? If so, [sign up to receive future updates](#).

Si necesita que le traduzcan esta notificación, envíenos un correo electrónico a ProjectInfoMa@eversource.com y escribe “[S-H]” en el asunto.

如果您需要本通知的翻譯版本，請
寄送電郵至
ProjectInfoMa@eversource.com，
並在主題欄中輸入 “[S-H]”

如果您需要本通知的翻譯版本，請
發電子郵件到
ProjectInfoMa@eversource.com，
並在主題欄中輸入 “[S-H]”



Address: 247 Station Drive
Westwood, MA 02090
Phone: 1-800-793-2202



[Email Us](#)

Eversource | 247 Station Drive, Westwood, MA 02090

[Unsubscribe selectboard@sudbury.ma.us](mailto:selectboard@sudbury.ma.us)

[Update Profile](#) | [Constant Contact Data Notice](#)

Sent by miles.lang-kennedy@eversource.com powered by

