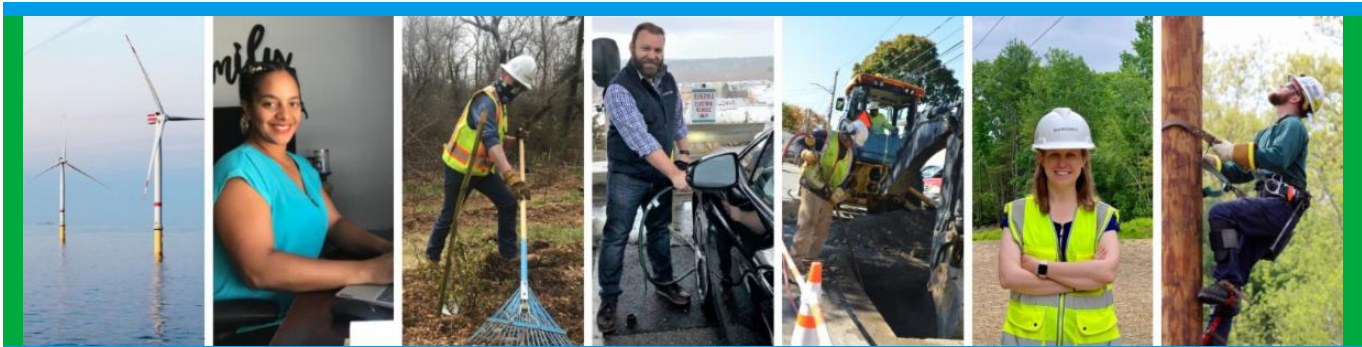


From: Eversource Outreach <miles.lang-kennedy@eversource.com>
Sent: Wednesday, December 28, 2022 11:50 AM
To: Select Board
Subject: Project Update (12/28/22) Eversource 115-kV Transmission Line



[Project Website](#)



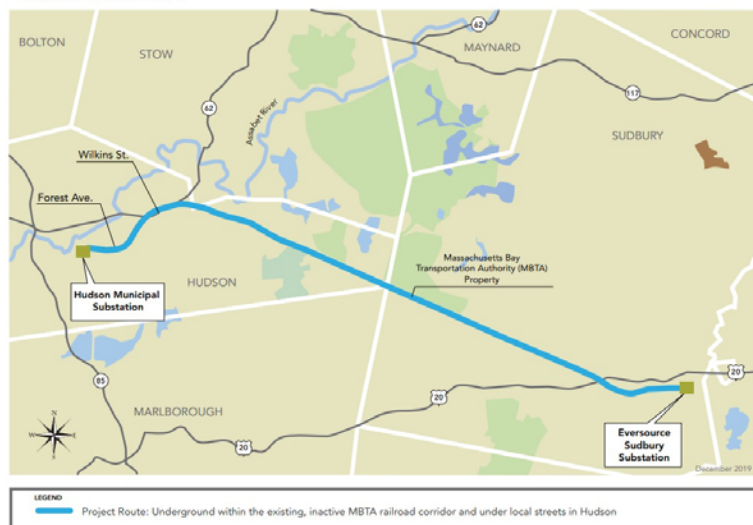
Eversource 115-kV Transmission Project Update

Greetings!

Eversource’s contractor BOND Civil & Utility Construction and their subcontractors (ET&L Construction, M-O-N Landscaping Inc., and Moosehead LLC) are continuing to work on the 115-kilovolt (kV) Underground Transmission Line Project in Hudson and Sudbury. Crews will be working from Tuesday through Friday this week.

There will be **no work on January 2, 2023**. Construction is not expected to interrupt electric service.

Project Route Map



Work Hours

Approved work hours are 7 a.m. to 6 p.m., Monday to Friday but crews are working from 7 a.m. to 3:30 p.m. Occasional work may extend beyond the approved hours, due to unforeseen conditions, based on feedback from municipal officials.

Below is an overview of the active and upcoming work zones in Hudson and Sudbury for the next several weeks.

Hudson

- **In the inactive Massachusetts Bay Transportation Authority (MBTA) rail corridor**, between Wilkins Street and Parmenter Road, crews are removing rails and ties and grading sections of the limits of work, which includes moving soils. From Parmenter Road to the Town line, crews are mainly focused on grading to prepare for forthcoming phases of construction.
- **Off Forest Avenue**, between Hudson Light & Power and the recently installed vault (MH1), crews will be backfilling the trench and pouring concrete next week. Active construction will not occur on Forest Avenue until Spring 2023.

Sudbury

- **In the inactive MBTA rail corridor**, clearing of vegetation started near the Sudbury Substation (163 Boston Post Road) and is moving west toward Bridge 127. Clearing activities in this segment are expected to last for several weeks followed by the installation of sediment and erosion controls. In early January, crews will begin removing vegetation at the Sudbury/Hudson Town line moving east toward Dutton Road.
- **Off Boston Post Road**, at the Eversource Sudbury Substation, G. Greene Construction, another Eversource contractor, will be working for several days this week inside the fence line and on Eversource property. G. Greene will not be working next week and will resume work on January 3, 2023.

Typical Construction

Pictured is the work zone at Hudson Light & Power where crews are installing duct bank from the recently installed vault (MH1) toward Forest Avenue.



Stay Informed

Eversource is committed to being a good neighbor and doing any work with respect for you and your property. If you have questions or concerns, please contact us using one of the methods below or respond to this message.

- Dial **1-833-836-0302**
- Email ProjectInfoMa@eversource.com
- Visit the [website](#) for this project
- View the [interactive project map](#)
- View information on [rail trail access](#) during construction
- **Field outreach representatives** will be in touch with notices updating you on construction activities.

Did someone forward this email? If so, [sign up to receive future updates](#).

Si necesita que le traduzcan esta notificación, envíenos un correo electrónico a ProjectInfoMa@eversource.com y escribe "[S-H]" en el asunto.

如果您需要本通知的翻譯版本，請寄送電郵至 ProjectInfoMa@eversource.com，並在主題欄中輸入 "[S-H]"

如果您需要本通知的翻譯版本，請發電子郵件到 ProjectInfoMa@eversource.com，並在主題欄中輸入 "[S-H]"

EVERSOURCE

Address: 247 Station Drive
Westwood, MA 02090
Phone: 1-800-793-2202



[Email Us](#)

Eversource | 247 Station Drive, Westwood, MA 02090

[Unsubscribe selectboard@sudbury.ma.us](mailto:Unsubscribe_selectboard@sudbury.ma.us)

[Update Profile](#) | [Constant Contact Data Notice](#)

Sent by miles.lang-kennedy@eversource.com powered by



Try email marketing for free today!