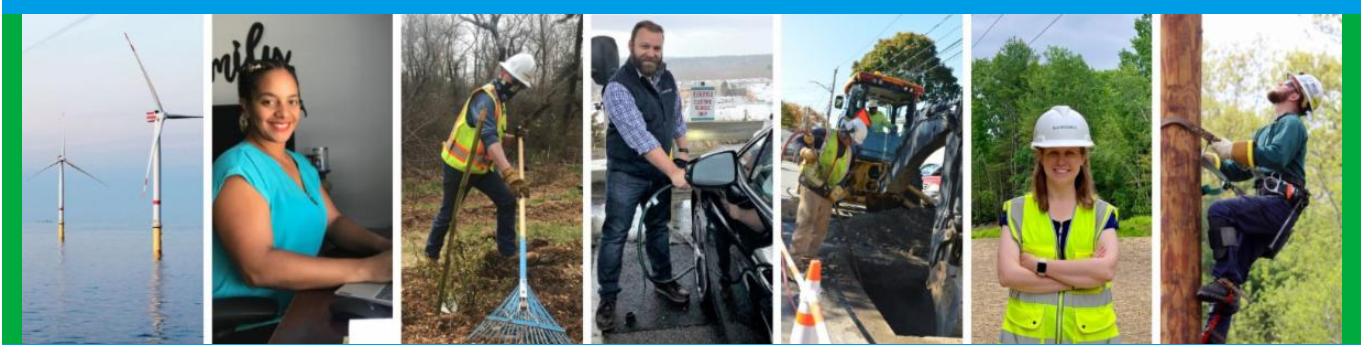


From: Eversource Outreach <miles.lang-kennedy@eversource.com>
Sent: Wednesday, December 14, 2022 1:38 PM
To: Select Board
Subject: Project Update (12/14/22) Eversource 115-kV Transmission Line



[Project Website](#)

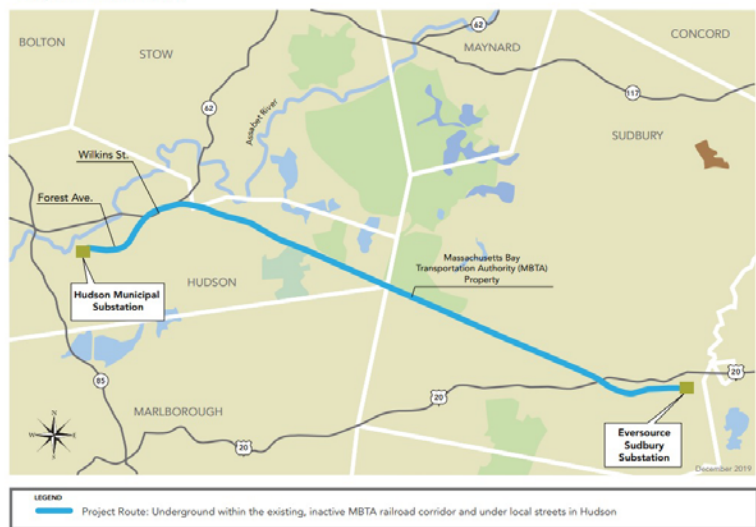


Eversource 115-kV Transmission Project Update

Greetings!

BOND Civil & Utility Construction, Eversource's approved contractor, and their subcontractors (ET&L Construction, M-O-N Landscaping Inc., and Moosehead LLC) resumed activities on the 115-kilovolt (kV) Underground Transmission Line Project. Crews will be working from **Monday through Friday** for the next several weeks. There will be no work on **December 26 and January 2, 2023**. Construction is not expected to interrupt electric service.

Project Route Map



Work Hours

Approved work hours are 7 a.m. to 6 p.m., Monday to Friday but crews are working from **7 a.m. to 3:30 p.m.** Occasional work may extend beyond the approved hours, due to unforeseen conditions, based on feedback from municipal officials.

Below is an overview of the active and upcoming work zones in Hudson and Sudbury.

Hudson

- **In the inactive Massachusetts Bay Transportation Authority (MBTA) rail corridor**, between Wilkins Street and Parmenter Road, crews are installing erosion controls (silt fencing) to the limits of work. Rail and time removal in this segment will begin in several weeks. From Parmenter Road to the Town Line, crews are removing rails and ties and grading work areas for the next several weeks.
- **Off Forest Avenue**, one crew is installing a section of duct bank on Hudson Light & Power property from the recently installed vault (MH1) toward Forest Avenue. Active construction will not occur on Forest Avenue until Spring 2023.

Sudbury

- **In the inactive MBTA rail corridor**, initial clearing of vegetation is expected to start next week near the Sudbury Substation (163 Boston Post Road) moving west toward Bridge 127. After this segment is completed, crews will start clearing at the Sudbury/Hudson Town line and head east toward the Sudbury Substation along the corridor.
- **Off Boston Post Road**, at the Eversource Sudbury Substation, G. Greene Construction, another Eversource contractor, is making upgrades to electrical equipment inside the Substation. Construction activities for this portion of the Project are within the fence line of the Substation and on Eversource property.
- **On the evening of December 20**, members of the Project team will provide a brief update related to activities in Sudbury to the Select Board.

Typical Construction

Pictured is the work zone at Hudson Light & Power where crews are installing duct bank from the recently installed vault (MH1) toward Forest Avenue.



Stay Informed

Eversource is committed to being a good neighbor and doing any work with respect for you and your property. If you have questions or concerns, please contact us using one of the methods below or respond to this message.

- Dial **1-833-836-0302**
- Email ProjectInfoMa@eversource.com
- Visit the [website](#) for this project
- View the [interactive project map](#)
- View information on [rail trail access](#) during construction
- **Field outreach representatives** will be in touch with notices updating you on construction activities.

Did someone forward this email? If so, [sign up to receive future updates](#).

Si necesita que le traduzcan esta notificación, envíenos un correo electrónico a ProjectInfoMa@eversource.com y escribe "[S-H]" en el asunto.

如果您需要本通知的翻譯版本，請寄送電郵至 ProjectInfoMa@eversource.com，並在主題欄中輸入 "[S-H]"

如果您需要本通知的翻譯版本，請發電子郵件到 ProjectInfoMa@eversource.com，並在主題欄中輸入 "[S-H]"

EVERSOURCE

Address: 247 Station Drive
Westwood, MA 02090
Phone: 1-800-793-2202



Email Us

Eversource | 247 Station Drive, Westwood, MA 02090

[Unsubscribe selectboard@sudbury.ma.us](mailto:selectboard@sudbury.ma.us)

[Update Profile](#) | [Constant Contact Data Notice](#)

Sent by miles.lang-kennedy@eversource.com powered by

