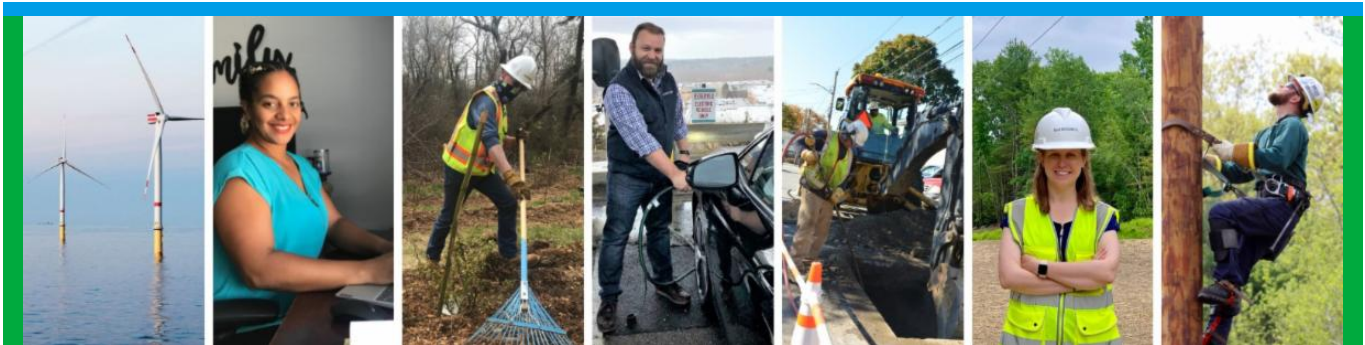


From: Eversource Outreach <miles.lang-kennedy@eversource.com>
Sent: Wednesday, November 2, 2022 2:03 PM
Subject: Project Update (11/2/22) - Eversource 115 kV Transmission Line



[Project Website](#)



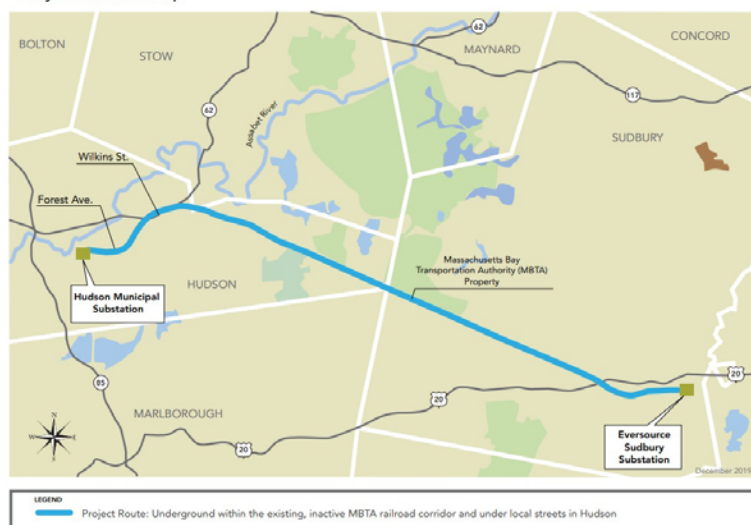
Eversource 115 kV Transmission Project Update

Hello Leila,

BOND Civil & Utility Construction, Eversource's approved contractor, is continuing work on the 115 Kilovolt (kV) Underground Transmission Line Project this week. The schedule calls for construction from Monday to Friday. Construction activities are not expected to interrupt electric service.

Brianna Germain, one of our Eversource Field Outreach Representatives, will be hosting **Office Hours** where people can learn more about the Project and ask questions, on **November 3** and **November 10**, from 8 a.m. – 10 a.m. at Stevie's Café (577 Main Street) in Hudson. Please respond to this message if you are interested in attending the Office Hours.

Project Route Map



Work Hours

Approved work hours for the Project are 7 a.m. to 6 p.m., Monday to Friday but crews will be working from **7 a.m. to 3:30 p.m.** Based on approval from local officials, occasional work may occur beyond these hours, due to unforeseen conditions (like weather).

Hudson

- **Off Forest Avenue**, work crews are preparing to install a vault (MH1) and duct bank (roughly 600 feet) on Hudson Light & Power (49 Forest Avenue) property. Surveys will be conducted at the vault location next week to ascertain the location of underground utilities. Excavation activities are expected to start on November 10 and last for several weeks at Hudson Light & Power. No additional work is happening on Forest Avenue until Spring 2023.
- **Between White Pond Road and Dutton Road**, in the inactive MBTA corridor, BOND is establishing an access point at White Pond Road and setting up erosion controls and fencing. In the coming weeks, vegetation and rail removal will commence in this area.

Sudbury

- **Off Boston Post Road**, at the Eversource Sudbury Substation, G. Greene Construction, another Eversource contractor, is making upgrades to electrical equipment inside the Substation. Greene is pouring foundations for several transmission structures. Construction activities for this portion of the Project are within the fence line and on Eversource property.
- In the inactive MBTA corridor, crews will start moving into Sudbury, near Dutton Road, to set up erosion controls, safe work zones and remove vegetation.

Crews are setting up sediment and erosion controls in the inactive MBTA corridor and establishing construction entrances at the following crossings: Wilkins Street, Chestnut Street, Parmenter Road, White Pond Road, Peakham Road, Dutton Road, Horse Pond Road and Union Avenue. There is no active construction expected in Stow or Marlborough for the coming weeks.

Stay Informed

Eversource is committed to being a good neighbor and doing any work with respect for you and your property. If you have questions or concerns, please contact us using one of the methods below.

- Dial **1-833-836-0302**
- Email ProjectInfoMa@eversource.com
- Visit the [website](#) for this project
- View the [interactive project map](#).
- View information on [rail trail access](#) during construction

- **Field outreach representatives** will be in touch with notices updating you on construction activities.
- Did someone forward this email? If so, [sign up to receive future updates](#).

Si necesita que le traduzcan esta notificación, envíenos un correo electrónico a ProjectinfoMa@eversource.com y escribe "[S-H]" en el asunto.

如果您需要本通知的翻譯版本，請寄送電郵至 ProjectinfoMa@eversource.com，並在主題欄中輸入 "[S-H]"

如果您需要本通知的翻譯版本，請發電子郵件到 ProjectinfoMa@eversource.com，並在主題欄中輸入 "[S-H]"

EVERSOURCE

Address: 247 Station Drive
Westwood, MA 02090
Phone: 1-800-793-2202



Email Us

Eversource | 247 Station Drive, Westwood, MA 02090

[Update Profile](#) | [Constant Contact Data Notice](#)

Sent by miles.lang-kennedy@eversource.com powered by

