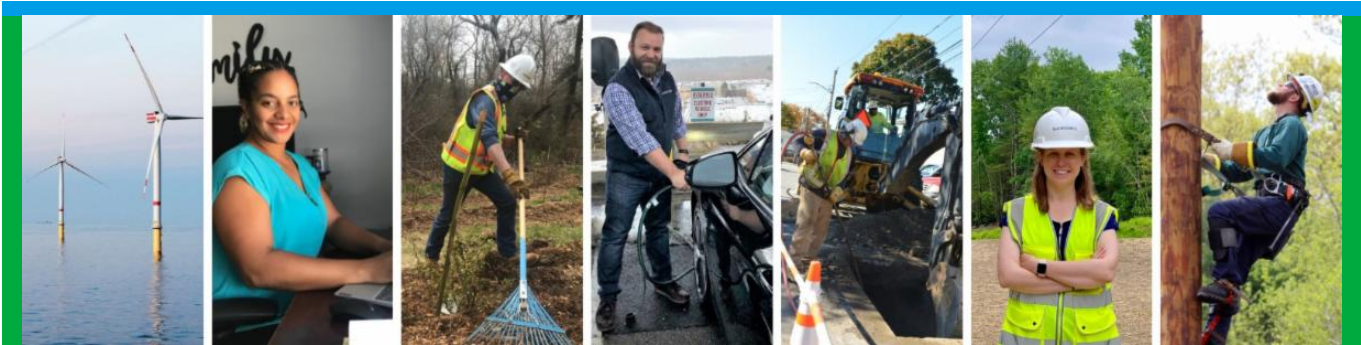


**From:** Eversource Outreach <miles.lang-kennedy@eversource.com>  
**Sent:** Wednesday, October 26, 2022 1:03 PM  
**To:** Select Board  
**Subject:** Project Update (10/26/22) - Eversource 115 kV Transmission Line



[Project Website](#)

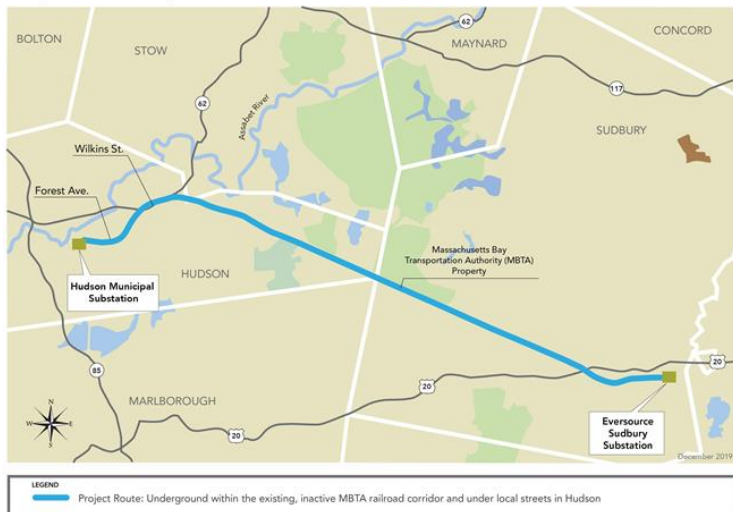


## Eversource 115 kV Transmission Project Update

Greetings!

Eversource’s contractor BOND Civil & Utility Construction is continuing work on the 115 Kilovolt (kV) Underground Transmission Line Project in Sudbury and Hudson this week. The schedule calls for construction from Monday to Friday. Construction activities are not expected to interrupt electric service.

**Sudbury to Hudson Transmission Reliability Project**  
Project Route Map



### Work Hours

Approved work hours for the Project are 7 a.m. to 6 p.m., Monday to Friday (excluding holidays). Occasional work may occur beyond these hours, due to unforeseen conditions, based on approval from local officials.

Eversource Field Outreach Representative Brianna Germain will be hosting **Office Hours**, where people can ask questions and learn more about the Project, on **Thursday, November 3**, from 8 a.m. – 10 a.m. at Stevie's Café (577 Main Street) in Hudson. Please respond to this message if you are interested in connecting with Brianna.

### Hudson

- **On Forest Avenue**, work crews are performing test pits, to survey the location of underground utilities, and sewer/drain surveys at several locations between Glendale Road and Wheeler Road. These surveys usually take a couple of hours to perform and police details will be present to aid motorists through the temporary work zones. In the coming weeks crews will begin installing a vault and duct bank on the Hudson Light & Power (49 Forest Avenue) property.
- **In the inactive MBTA corridor**, between White Pond Road and Dutton Road, BOND is establishing an access point at White Pond Road, setting up erosion controls and will start initial vegetation clearing soon.

### Sudbury

- **At the Sudbury Substation**, located off Boston Post Road, G. Greene Construction, another Eversource contractor, is continuing to make upgrades to the Eversource Substation. Greene is focusing on excavating and pouring foundations for several transmission structures. All construction activities for this portion of the Project are within the fence line and on Eversource property.
- **In the inactive MBTA corridor**, starting soon, crews from BOND will begin to move into Sudbury, near Dutton Road, to set up erosion controls, safe work zones and remove vegetation.

**In both Sudbury and Hudson**, BOND is establishing construction entrances at the following crossings: Wilkins Street, Chestnut Street, Parmenter Road, White Pond Road, Peakham Road, Dutton Road, Horse Pond Road and Union Avenue. There is no active construction expected in Stow or Marlborough for the coming weeks.

---

**Stay Informed**

Eversource is committed to being a good neighbor and doing any work with respect for you and your property. If you have questions or concerns, please contact us using one of the methods outlined below.

- Dial **1-833-836-0302**
- Email [ProjectInfoMa@eversource.com](mailto:ProjectInfoMa@eversource.com)
- Visit the [website](#) for this project
- View the [interactive project map](#).
- **Field outreach representatives** will be in touch with notices updating you on construction activities.
- Did someone forward this email? If so, [sign up to receive future updates](#).

Si necesita que le traduzcan esta notificación, envíenos un correo electrónico a [ProjectInfoMa@eversource.com](mailto:ProjectInfoMa@eversource.com) y escribe "[S-H]" en el asunto.

如果您需要本通知的翻譯版本，請寄送電郵至 [ProjectInfoMa@eversource.com](mailto:ProjectInfoMa@eversource.com)，並在主題欄中輸入 "[S-H]"

如果您需要本通知的翻譯版本，請發電子郵件到 [ProjectInfoMa@eversource.com](mailto:ProjectInfoMa@eversource.com)，並在主題欄中輸入 "[S-H]"

# EVERSOURCE



**Address:** 247 Station Drive  
Westwood, MA 02090  
**Phone:** 1-800-793-2202

[Email Us](#)

Eversource | 247 Station Drive, Westwood, MA 02090

[Unsubscribe selectboard@sudbury.ma.us](mailto:Unsubscribe_selectboard@sudbury.ma.us)

[Update Profile](#) | [Constant Contact Data Notice](#)

Sent by [miles.lang-kennedy@eversource.com](mailto:miles.lang-kennedy@eversource.com) powered by

