



## Transportation Improvement Program Project Information Form

1 ID Number:	<b>604532</b>	13 <b>TIP History</b>
2 Municipality(ies):	<b>Acton, Carlisle, Concord, Sudbury &amp; Westford</b>	2006 <b>2008</b>
3 Project Name:	<b>Bruce Freeman Memorial Bicycle Path</b>	2005
4 Project Category:	<b>Bicycle/Pedestrian Expansion</b>	2004
5 MHD District:	<b>3</b>	2003
6 MAPC Subregion:	<b>MetroWest</b>	2002
7 Estimated Cost:	<b>\$11,351,630</b>	
8 Earmark Funds:		
9 Description:	<b>Additional Capacity</b>	

**Construct Bruce Freeman Trail Phase Two from Westford to South Sudbury along the Lowell secondary track right-of-way owned by the Commonwealth of Massachusetts.**

10 Project Length (Mile) **14.52**      11 Project Lane Miles:      12 Additional Lane Miles: **14.52**

### Community Support

14 Community Priority **1**      15 Subregional Priority

### Additional Status

16 Additional Status    ☐ ITS Conformity    ☐ Approved CMAQ    ☐ Approved Enhancement

### Readiness

17 TIP Status: **Programmed**

18 Design Status: **Pre-25%**

20 Required Permits

### 19 Right Of Way

☒ Required      Certification

☐ MassHighway Responsibility      Expected:

☒ Municipal Responsibility      Recorded: ☐

☐ Municipal Approval      Expires:

**NPDES general Permit for Discharges from Construction Activities, ENF, Wetlands Order of Conditions, Con Com, Categorical Exclusion (CE) checklist**

P1 What is the need for this project?

**To provide pedestrian and bicycle safe access for recreation areas -- schools, shopping centers; and once connected over Route 2 to the West Concord station of the Fitchburg commuter rail line.**

### Existing Condition

21 Existing Pavement Condition:

Pavement Roughness (IRI):

Pavement Serviceability Rating (PSR):

22 Degree of Bicycle/Pedestrian Provisions: Sidewalks: **Sidewalks on one side**

☐ > Four Foot Shoulder    ☐ Signed Bicycle Route    ☒ Bicycle Trail

P2 What are the infrastructure condition needs or issues of the project area?

**New facility from Rt. 225 in Carlisle to Wetherbee Street in Acton. 25% design under way. Addresses increasing demand for safer off-street bicycle commuting routes. Connects in Carlisle with northern section of Bruce Freeman Rail Trail currently under, or ready for construction. Current project ends east of Wetherbee Street - waiting until the Route 2 rotary design is completed with an integration of the rail trail crossing into West Concord. Issues are generally typical for rail trail projects (existing trestles, some r.o.w. encroachments, etc.). Somewhat unique is the crossing of Route 2A/119 in Acton. Early in the 25% design process (by May 2007, or so) will be a definition of how the crossing will best be accomplished, which should provide a better cost estimate for the entire project. MassHighway District 3 is closely involved and intends to bring the project to PRC once more accurate cost estimates are available.**

P3 How does this project address the infrastructure condition needs or issues in the project area?

Not applicable.

Condition Need Criteria:      Pavement ☐ Bike/Ped ☐ Con Issues ☐      Need Avg ☐



## Transportation Improvement Program Project Information Form

Condition Project Criteria: A  B  C  D  E  F  Effectiveness Avg

### Safety Crashes

Total in  
Project Area

23 Top 200 Rank:

24 Three Year Crash Total: **50**

25 Fatal Crashes: **0**

26 Bicycle- Involved Crashes:

27 Pedestrian-Involved Crashes:

P4 What are the safety needs or issues of the project area?

Provide off-street commuting/travel route for bicyclists and users of other non-motorized modes of transportation .

P5 How does this project address the safety needs or issues in the project area?

Project will provide safety for pedestrians and bicycles.

Safety Need Criteria: Crashes  Saf Issues  Need Avg

Safety Project Criteria: A  B  C  D  E  F  Effectiveness Avg

### Mobility

#### Average Daily Traffic

28 ADT:

29 Count Location

30 Year of Count:

31 Source:

32 Truck ADT:

33 ☐ Trucks Excluded from Roadway

34 Transit Vehicles use Roadway:

#### Congestion Data

35 Average Speed

AM Peak Period:

PM Peak Period:

36 Average Speed Index

AM Peak Period:

PM Peak Period:

P6 What are the mobility needs or issues of the project area?

See answers above.

P7 How does this project address mobility needs identified above?

The bike/multiuse trail will provide access to conservation areas, recreation areas and business areas; and in the future to the West Concord commuter rail station.

P8 What intelligent transportation systems (ITS) elements does this project include?

Not applicable.

Mobility Need Criteria: ADT  MMS  Transit  Mob Issue  Need Avg

Mobility Project Criteria: A  B  C  D  E  F  G  H  I  J  K  L  Effectiveness Avg

### Community

37 ☐ Located in an environmental justice area

38 ☐ Located in an environmental justice population area

P9 How does the project relate to community character?

The Bruce Freeman Rail Trail runs past North Acton and East Acton Villages, zoning districts with mixed uses in them that are designated for pedestrian oriented improvements. Otherwise, the trail runs in the north through as largely rural area then along industrial areas; after crossing south over rt. 2A it runs for +/-1.5 miles along a highway commercial area with many apartments in the mix.

P10 If this project is located in an MPO-identified environmental justice area or population area, how does the project affect this area?

Not applicable.

P11 If this project is NOT located in an environmental justice area or population area, does it have any environmental justice impacts?

Not applicable.



## Transportation Improvement Program Project Information Form

Evaluation: Character  Env Justice  Avg

### Environment

- 39 ☐ Located in an area of critical environmental concern 42 ☐ Located in BioCore Habitat Area  
40 ☒ Located within 200 feet of a waterway 43 ☒ Located in Approved Wellhead Protection Areas  
41 Percentage wetland within ½ mile: **11.79%** 44 Percentage protected open space within ½ mile: **23.42%**

P12 What are the environmental impacts of the project?

**Reduction in motorized vehicle trips. Route runs along many wetlands, but minimal wetlands impacts are expected. One area mapped by NHESP as estimated habitat of rare wildlife (north of Route 2A crossing).**

Evaluation: Air Quality  Mitigation  Avg

### Land Use

- 45 Percentage of greenfield land **14.96%**  
46 Residential density threshold [(7 Dwelling Units (DU)/acre (suburban) to 50 DU/acre (urban): **1.29**  
47 Commercial FAR threshold [50 employees/ acre (suburban) to 150 employees/acre (urban)] **52**  
48 A future zoned population/employment ratio between 2.0 and .75 in the project area: **0.42**  
49 Mix of uses allowed within the area: **0**  
50 Maximum parking requirements: **No**  
51 TDM program required for all new developments, including: **No**  
Ridesharing program Subsidized transit use and other financial incentives  
Parking restrictions or pricing policies Areawide strategies  
Alternative work hours Subsidies for local transit service  
Telecommuting options Multi-occupant vehicle access  
52 50% of new roadway capacity preserved in Corridor Land Use plan: **No**

P13 How does the project improve access for pedestrians, bicyclists, and public transportation?

**This project is for bicyclists, pedestrians, wheelchair users, etc.**

P14 How is this project consistent with local land use policies?

**Bicycle and pedestrian improvements are long standing policy and planning objective in the Town of Acton, expressed in Master Plans, Open Space and Recreation Plans, and other policy documents since the 1980's.**

P15 How does the zoning within ½ mile of this project support transit-oriented-development and preserve any new roadway capacity?

**In the easterly portion of the trail in Acton are many apartments. The trail will connect them to the West Concord train station (when connected across Route 2). North Acton and East Acton villages are designated mixed use growth centers under local zoning.**

P16 Please describe the TDM policies, or other techniques in use, to reduce the number of single-occupancy vehicles coming into the project corridor.

**The Bruce Freeman Memorial Bicycle Path will increase cycling and walking, encourage non-motorized transportation, reduce traffic and automobile travel.**

Land Use Evaluation

### Economic Development

- 53 Serves a targeted redevelopment site: **0**  
54 Municipality provides financial or regulatory support for targeted redevelopment: **0**  
55 Encourages development of affordable housing accessible to employment centers:  
56 Supports Regional Freight Infrastructure: **0**  
Supports infrastructure improvements on a designated or known truck route  
Supports infrastructure improvement to a known or proposed industrial center  
Supports infrastructure improvement to a major port or airport or intermodal transfer facility

P17 How is the project consistent with state, regional, and local economic development priorities?



## Transportation Improvement Program Project Information Form

Provides non-motorized access/connectivity for businesses and residents; and to rail service once connected to West Concord.

*Economic Development Evaluation* **1**

**Additional Community Comments** Including additional project phases or concurrent public works associated with this project.

This project will preserve the former Penn Central Railroad right-of-way and provide safe passage for pedestrians and bicyclists and is a vital link of the Lowell to Sudbury Bikeway. Construction of the Bruce Freeman Rail Trail section from Westford to Lowell will begin this year. Connection to the Concord - Sudbury section may need to wait for the Route 2 Concord Rotary reconstruction project.

TIP Contact: William Place

### Cost Per Unit

57 \$ per ADT:

58 \$ per Lane Miles:

### Staff Comments

MPO/CTPS Study:

Air Quality Status:

# Demographics

ID: DM0235

Bicycle/Pedestrian

Expansion

Municipality **Acton, Carlisle, Concord, Sudbury & Wes**

Project: **Bruce Freeman Memorial Bicycle Path**

Cost: **\$4,400,000**

Description: **Construct Bruce Freeman Trail Phase Two from Westford to South Sudbury along the Lowell secondary track right-of-way owned by the Commonwealth of Massachusetts.**

## Population

Project Area Population **33,720**

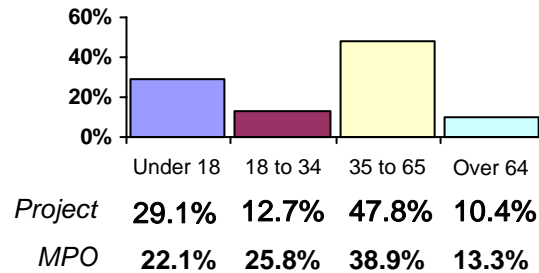
	<i>Project</i>	<i>MPO</i>
White	<b>90.9%</b>	<b>83.9%</b>
Black	<b>1.5%</b>	<b>7.5%</b>
American Indian	<b>0.1%</b>	<b>0.2%</b>
Asian/Pacific Islander	<b>5.1%</b>	<b>5.7%</b>
Other (including more than one)	<b>2.5%</b>	<b>2.7%</b>

	<i>Project</i>	<i>MPO</i>
Non-Hispanic	<b>97.7%</b>	<b>93.6%</b>
Hispanic	<b>2.3%</b>	<b>6.4%</b>

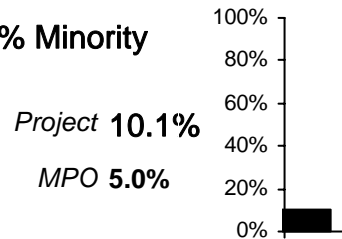
## Language

	<i>Project</i>	<i>MPO</i>
English	<b>81.0%</b>	<b>79.1%</b>
Spanish	<b>2.1%</b>	<b>6.1%</b>
French	<b>1.2%</b>	<b>2.0%</b>
Chinese	<b>2.0%</b>	<b>1.9%</b>
Portuguese	<b>0.4%</b>	<b>1.8%</b>
Other	<b>6.2%</b>	<b>9.2%</b>

## Age Distribution



## % Minority



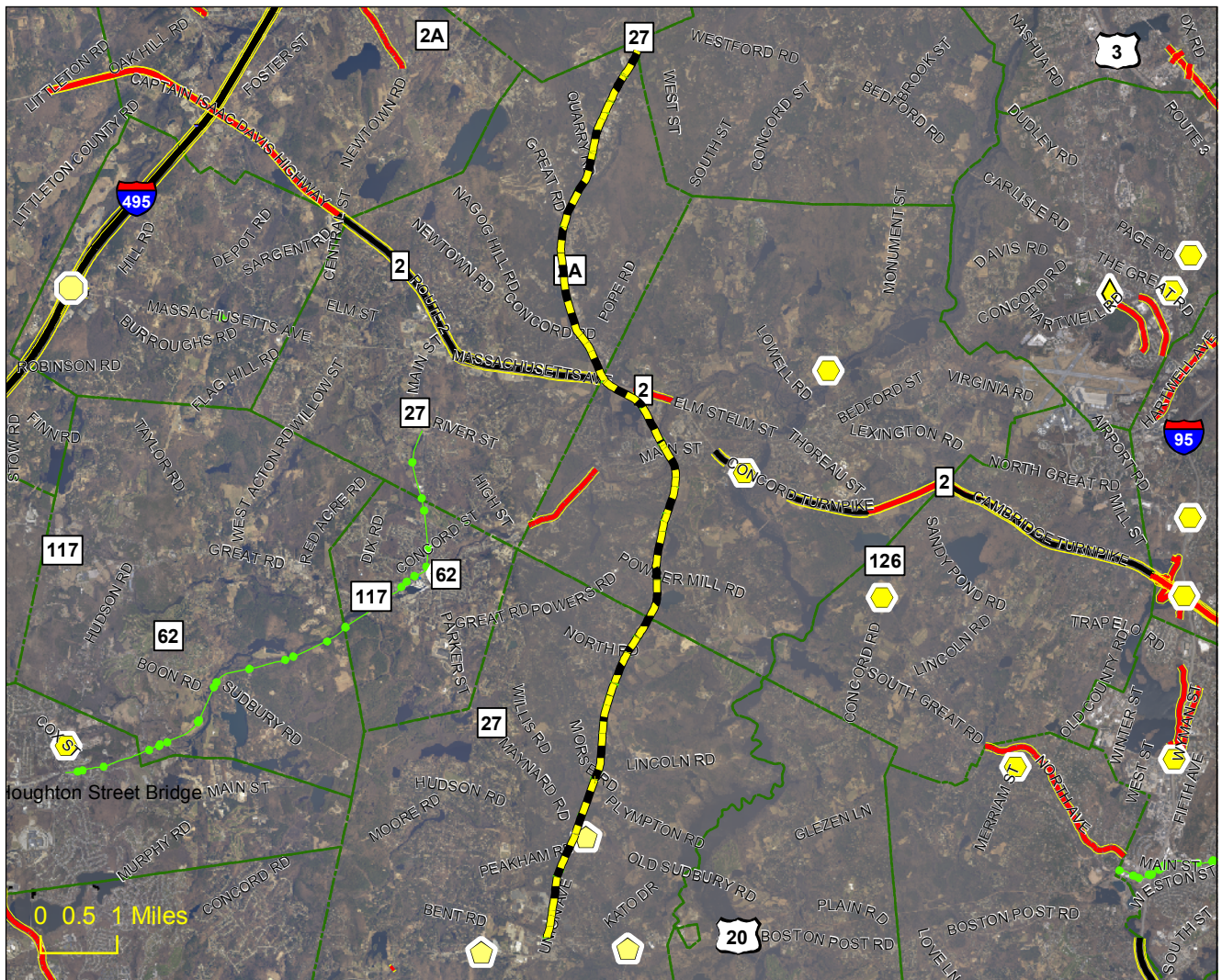
## Income

	<i>Project</i>	<i>MPO</i>
Households	<b>11,646</b>	<b>1,197,499</b>
Median Income	<b>\$107,362</b>	<b>\$55,800</b>



# Bruce Freeman Memorial Bicycle Path

DM0235 Acton, Carlisle, Concord, Sudbury & Westford



## Project Description

Construct Bruce Freeman Trail Phase Two from Westford to South Sudbury along the Lowell secondary track right-of-way owned by the Commonwealth of Massachusetts.

## Category:

Bicycle/Pedestrian  
Expansion  
Additional Capacity

**Air Quality Status:** Undetermined

## Category

- Selected project
- Major Highway
- Arterial and Intersection
- Bicycle/Pedestrian
- Bridge
- Regional mobility
- Enhancement