

# Rail Trail Under Construction

Sudbury, MA  
Spring 2023

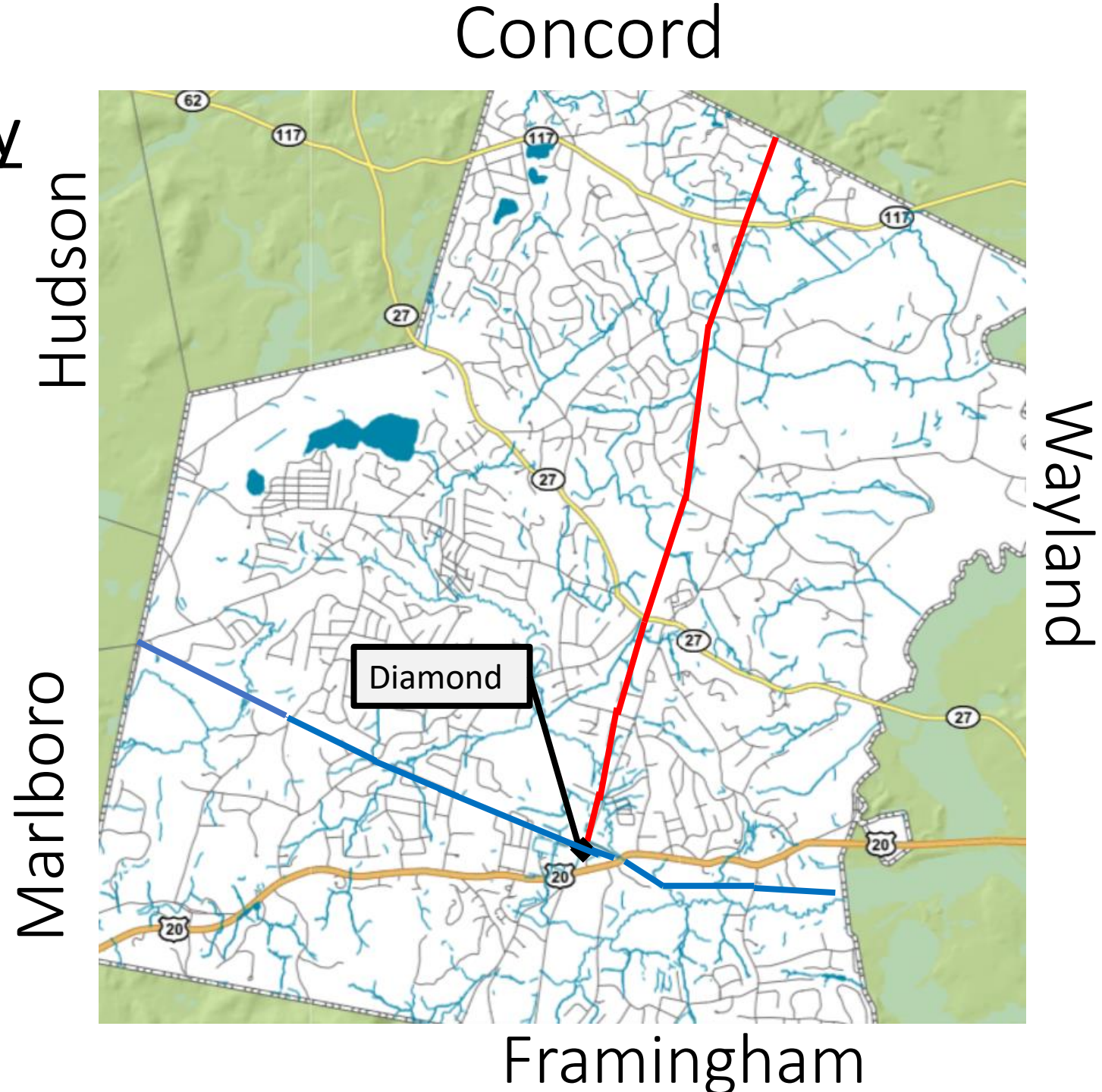
BRUCE FREEMAN RAIL TRAIL



## Two Rail Trails in Sudbury

The **Bruce Freeman Rail Trail** and the **Mass Central Rail Trail** are now being constructed.

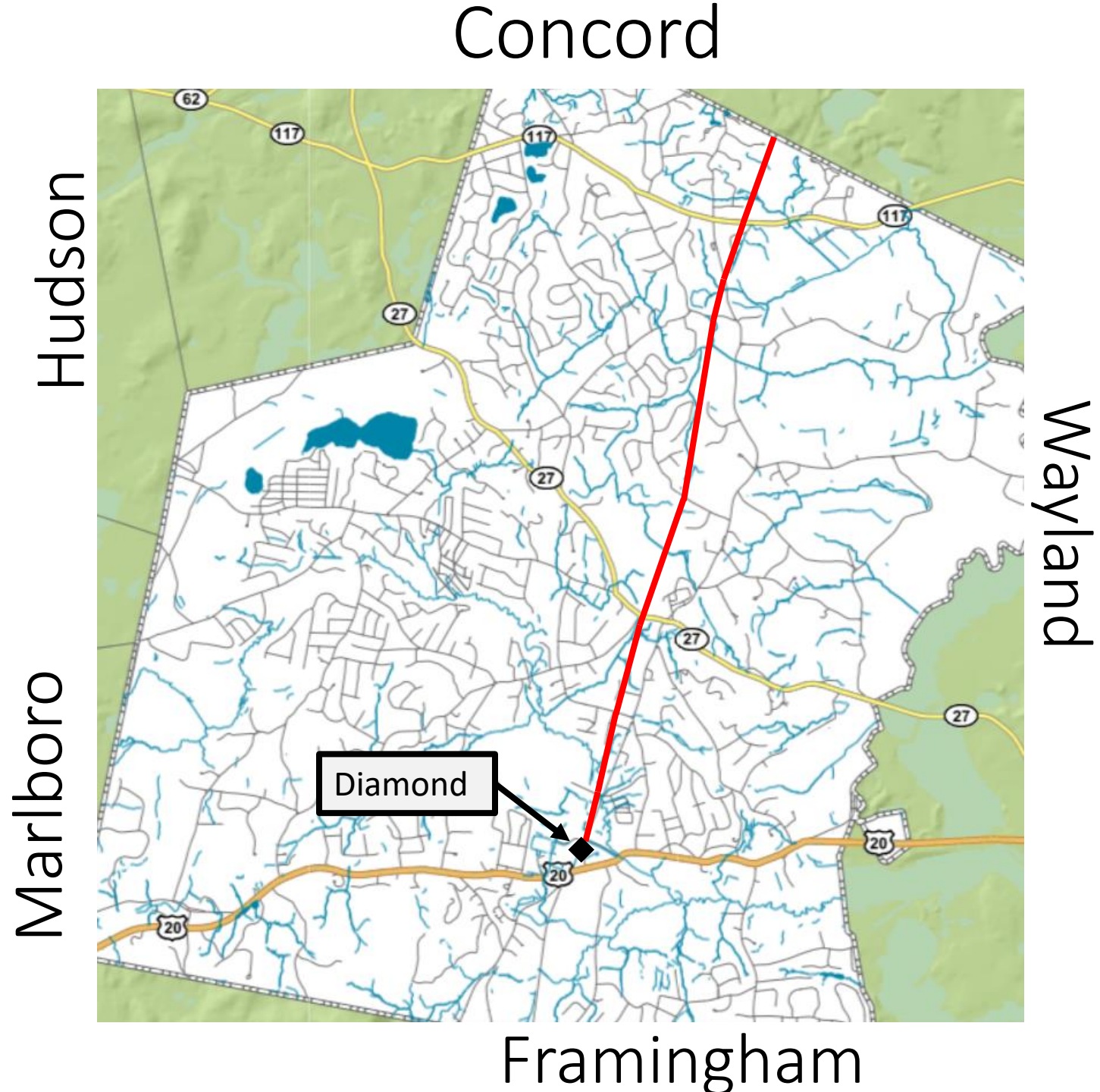
They will intersect at the “diamond,” just north of Route 20 near Union Ave.



# Sudbury's segment of the Bruce Freeman Rail Trail

## FEATURES

- **4.4 miles of paved path**  
From Concord/Sudbury line to Station Road (the diamond)
- **Trail is 10 feet wide with 2-foot shoulders**
- **Trail is fully ADA accessible**
- **Brook crossings at Pantry Brook and Hop Brook**
- **Trail is 100% emergency vehicle accessible end-to-end**

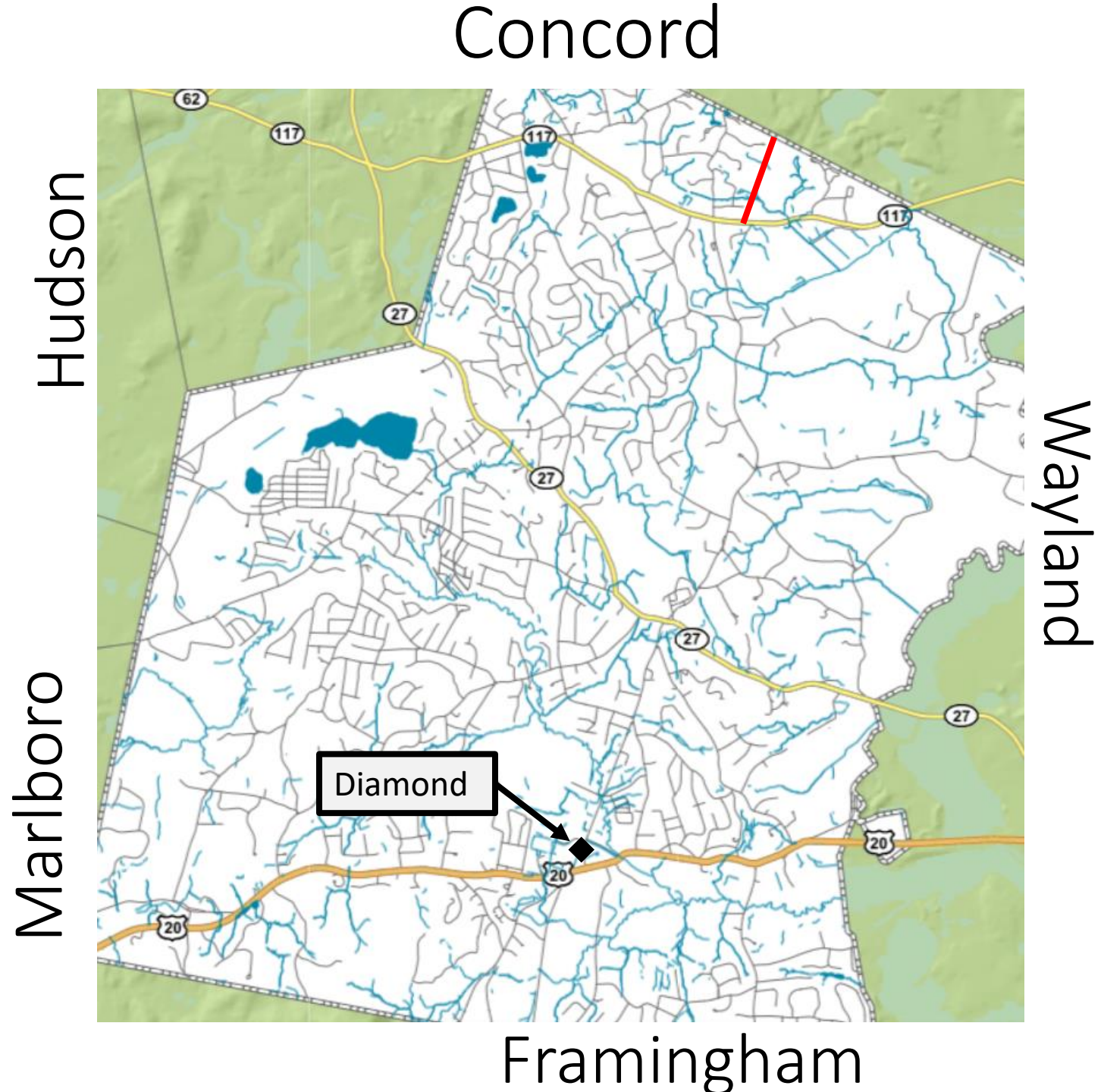


# Sudbury's segment of the

## Bruce Freeman Rail Trail

Road Crossings, north to south

- Rt. 117 (North Road)

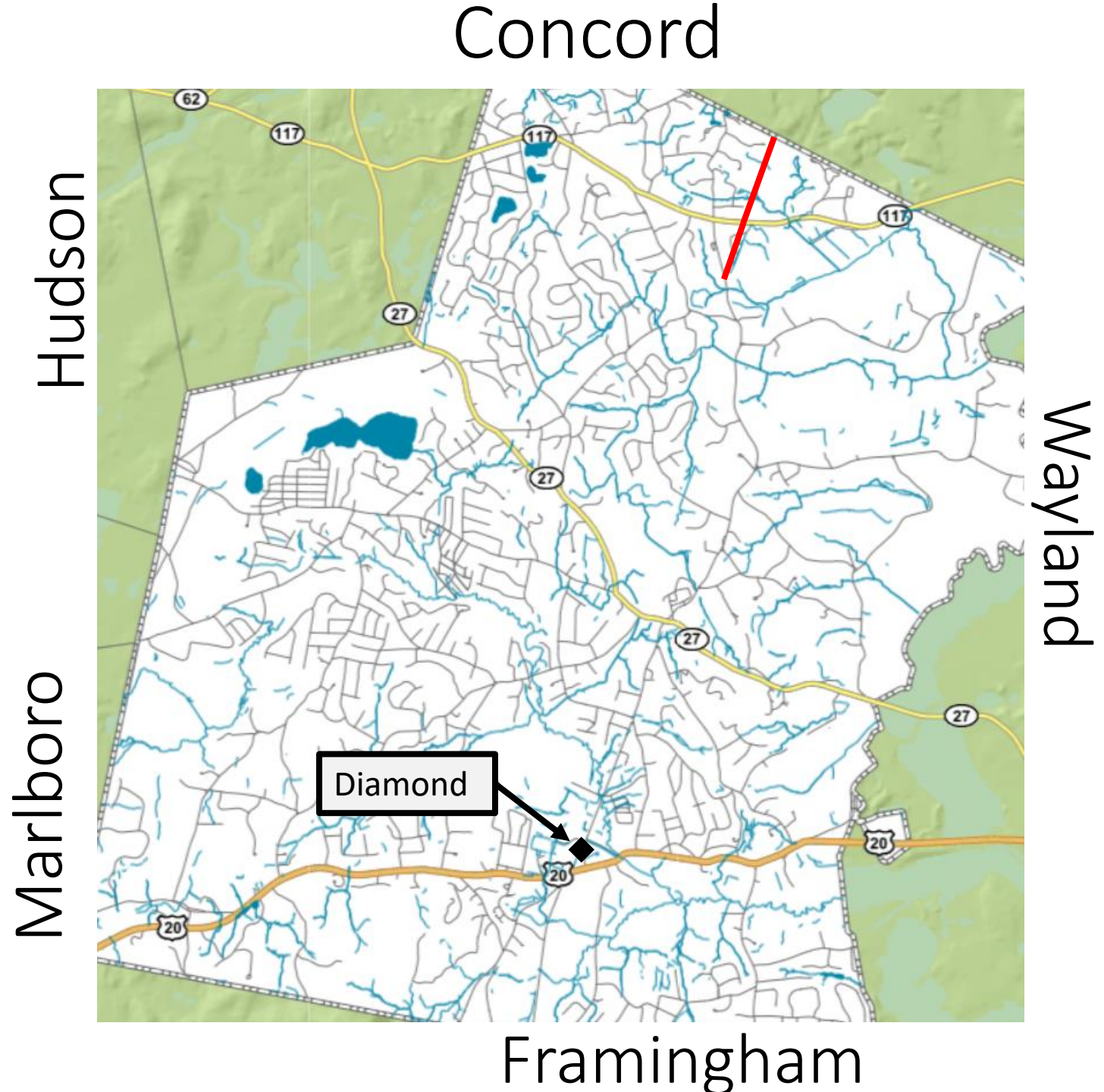


# Sudbury's segment of the

## Bruce Freeman Rail Trail

Road Crossings, north to south

- Rt. 117 (North Road)
- Pantry Road

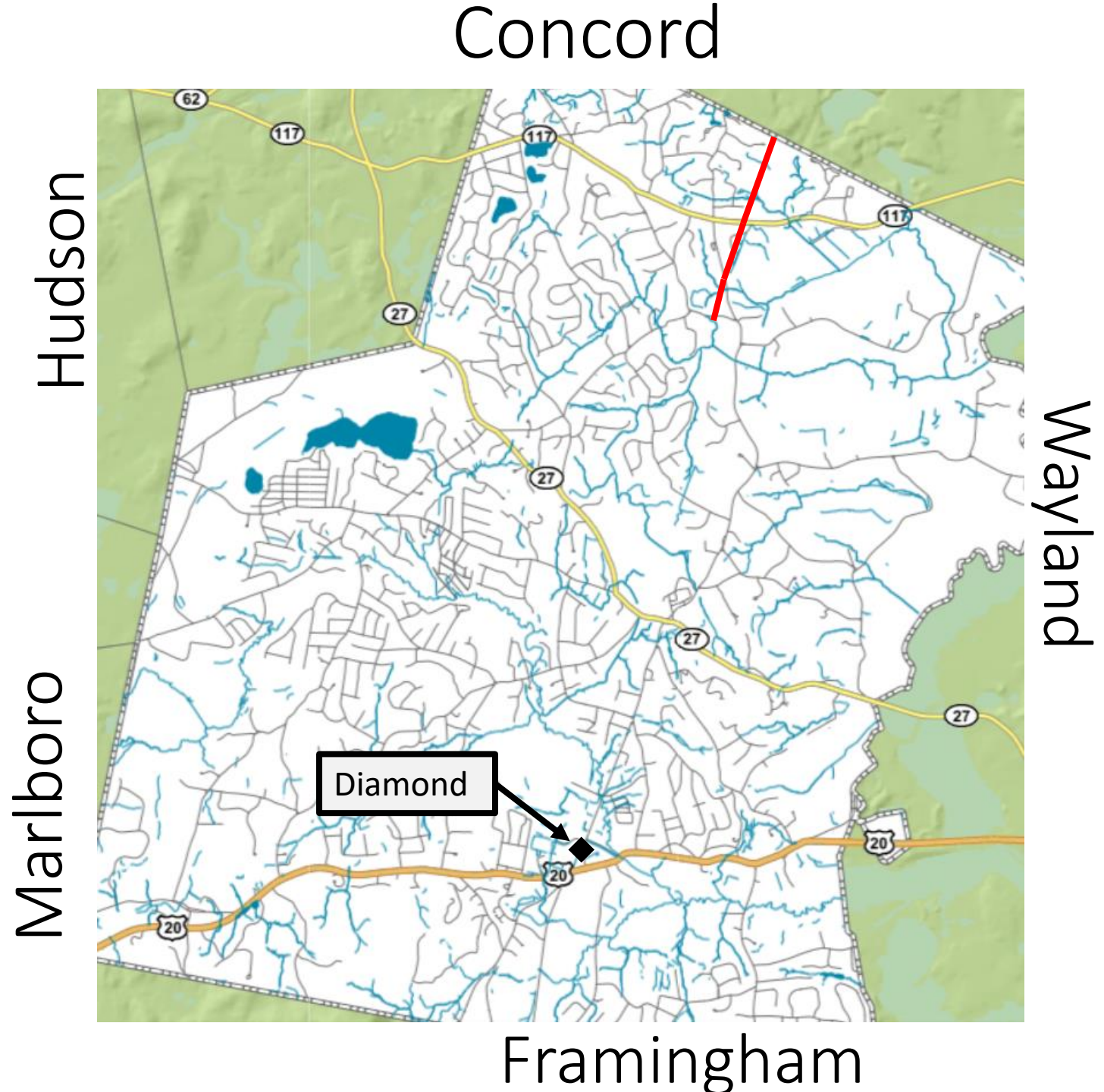


# Sudbury's segment of the

## Bruce Freeman Rail Trail

Road Crossings, north to south

- Rt. 117 (North Road)
- Pantry Road
- Haynes Road

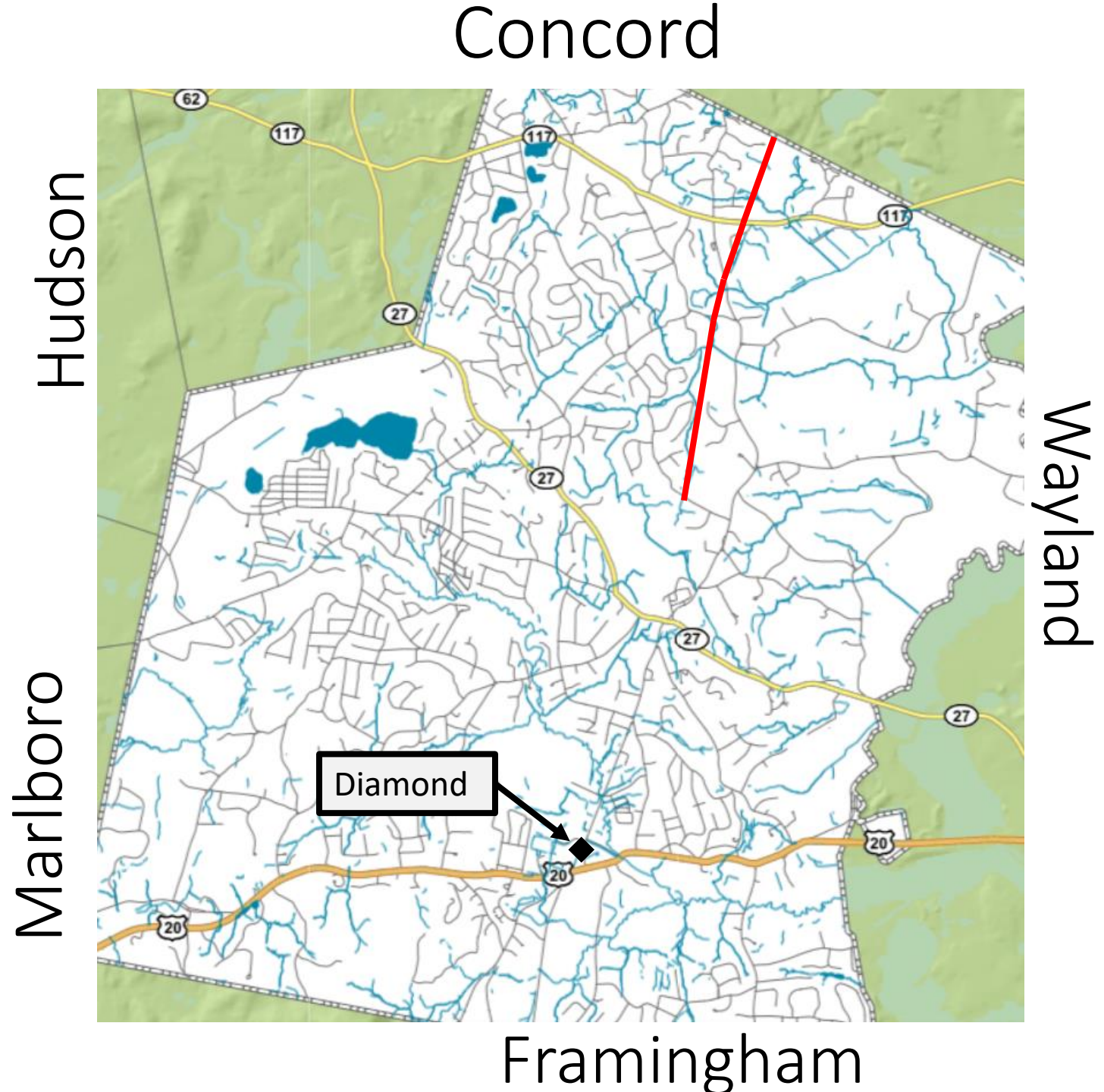


# Sudbury's segment of the

## Bruce Freeman Rail Trail

Road Crossings, north to south

- Rt. 117 (North Road)
- Pantry Road
- Haynes Road
- Morse Road

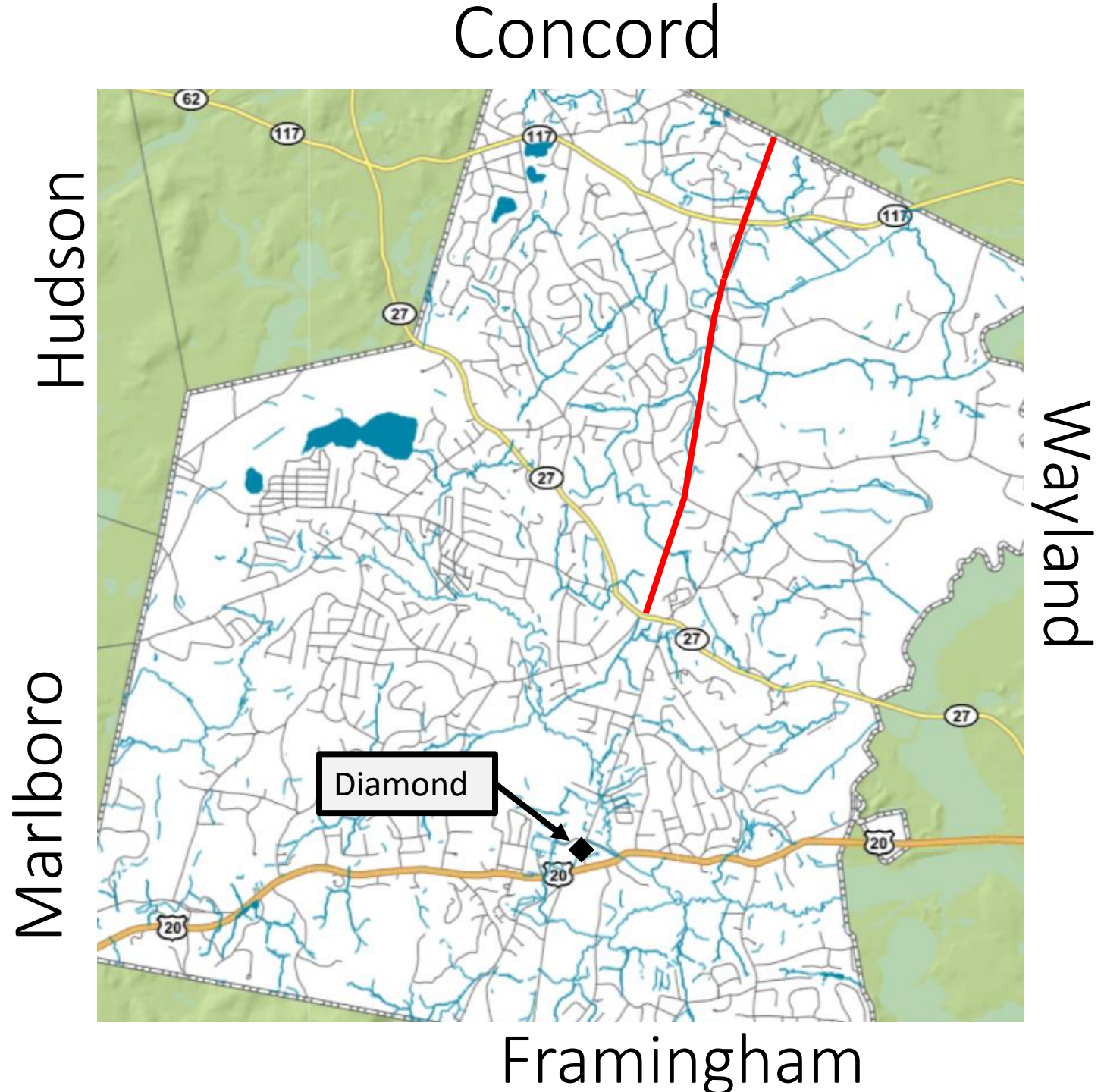


# Sudbury's segment of the

## Bruce Freeman Rail Trail

### Road Crossings, north to south

- Rt. 117 (North Road)
- Pantry Road
- Haynes Road
- Morse Road
- Hudson Road, Rt. 27



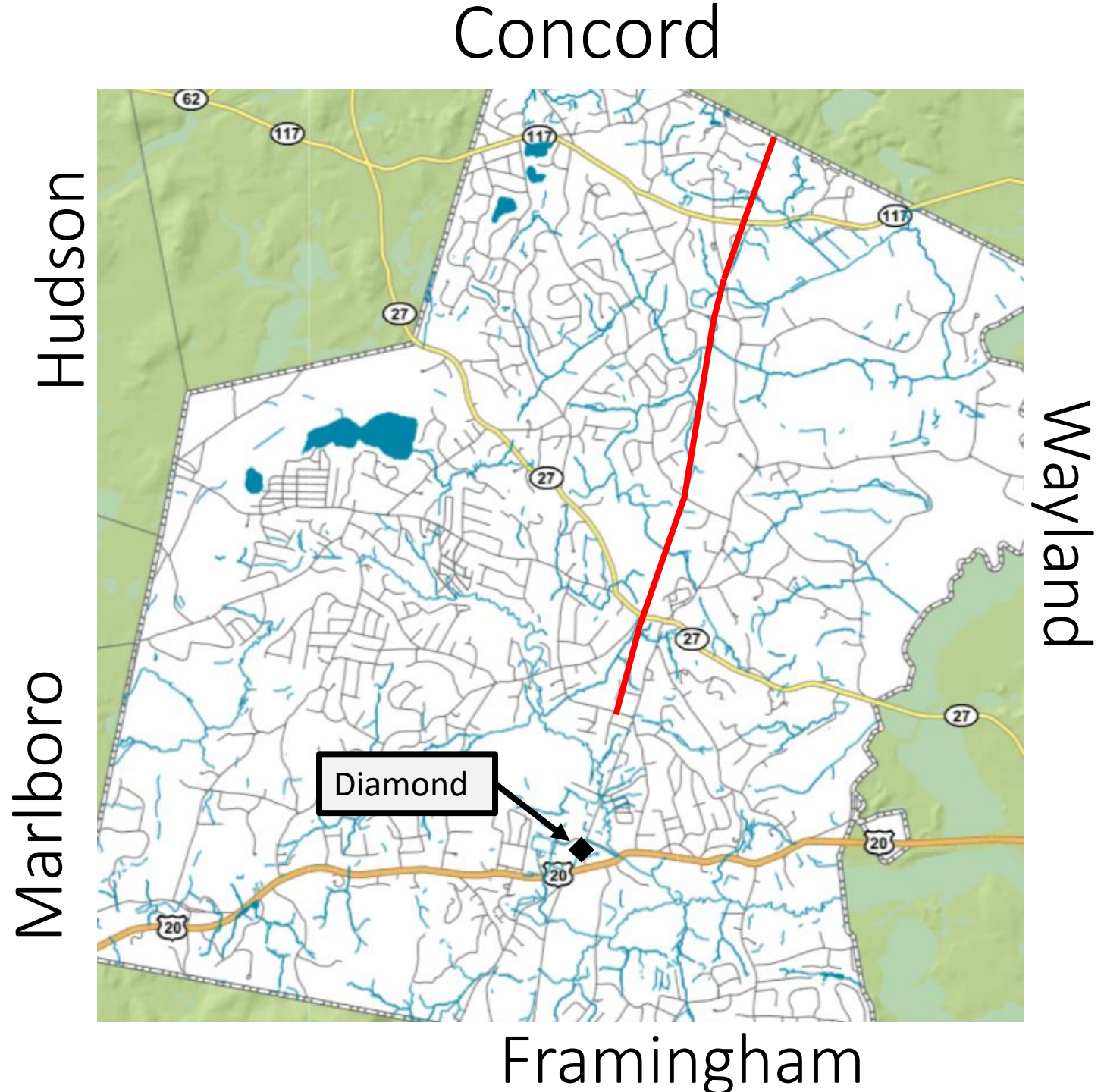


# Sudbury's segment of the

## Bruce Freeman Rail Trail

### Road Crossings, north to south

- Rt. 117 (North Road)
- Pantry Road
- Haynes Road
- Morse Road
- Hudson Road, Rt. 27
- Old Lancaster Rd.

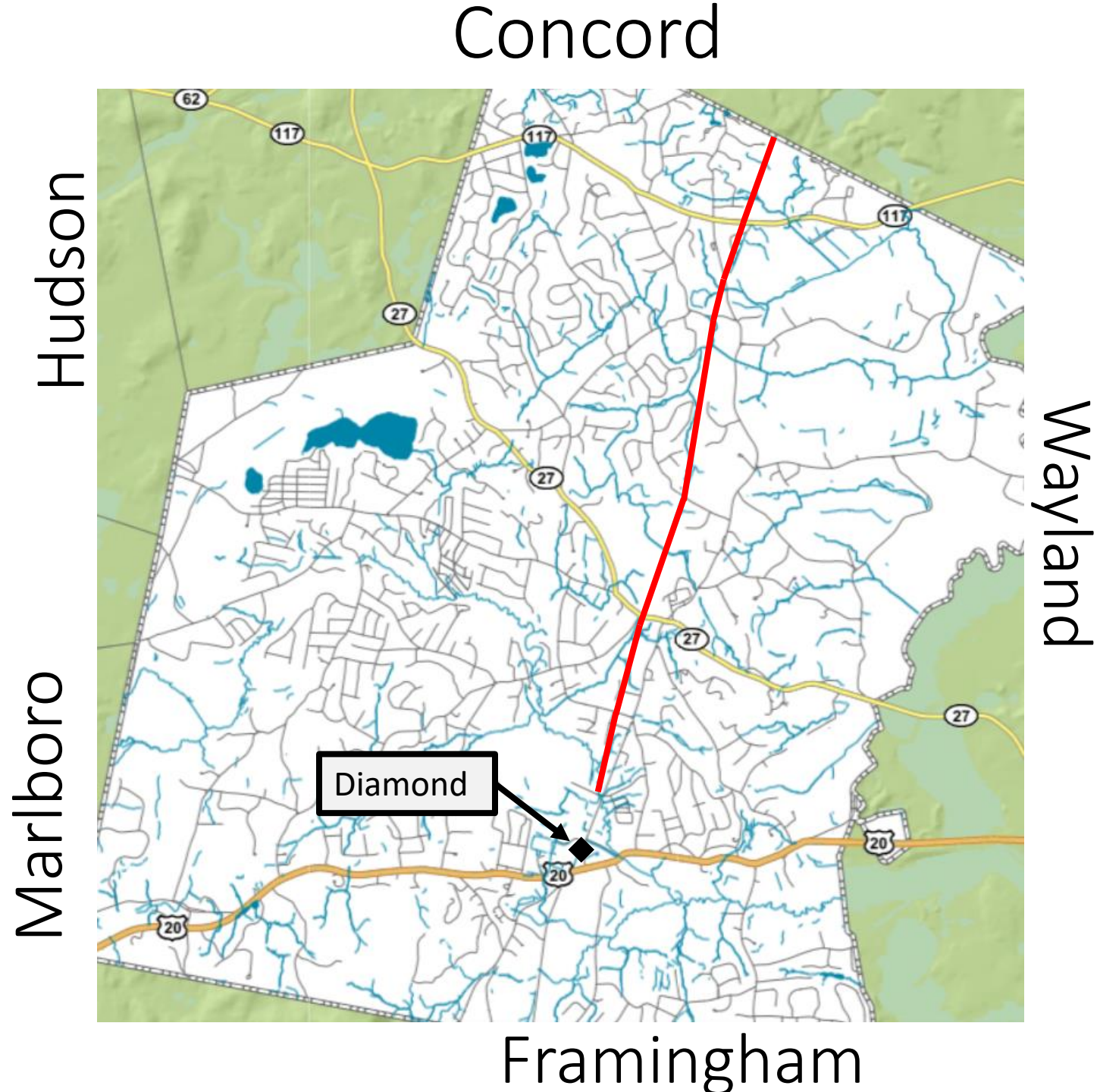


# Sudbury's segment of the

## Bruce Freeman Rail Trail

### Road Crossings, north to south

- Rt. 117 (North Road)
- Pantry Road
- Haynes Road
- Morse Road
- Hudson Road, Rt. 27
- Old Lancaster Rd.
- Codjer Lane



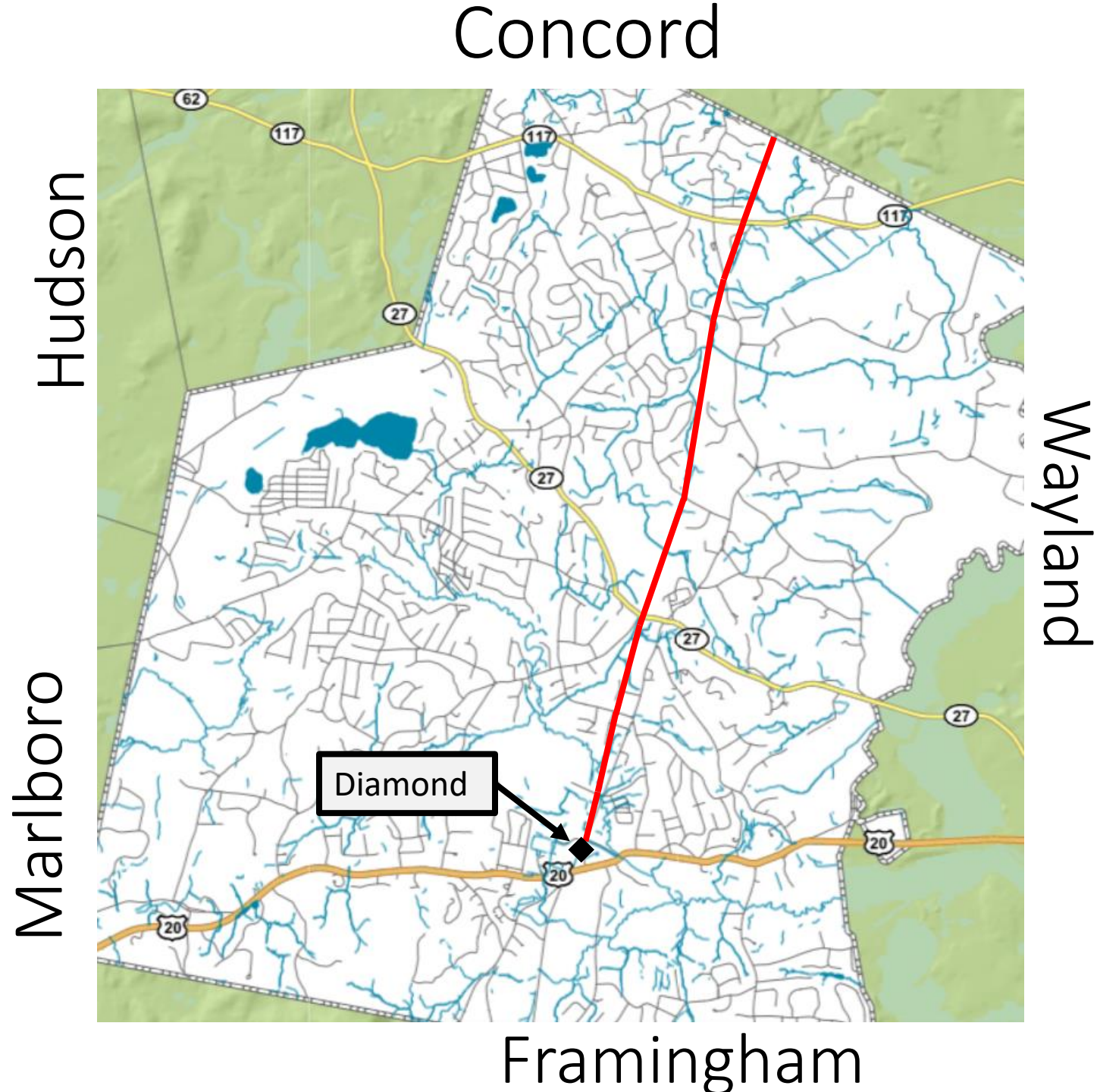
# Sudbury's

segment of the

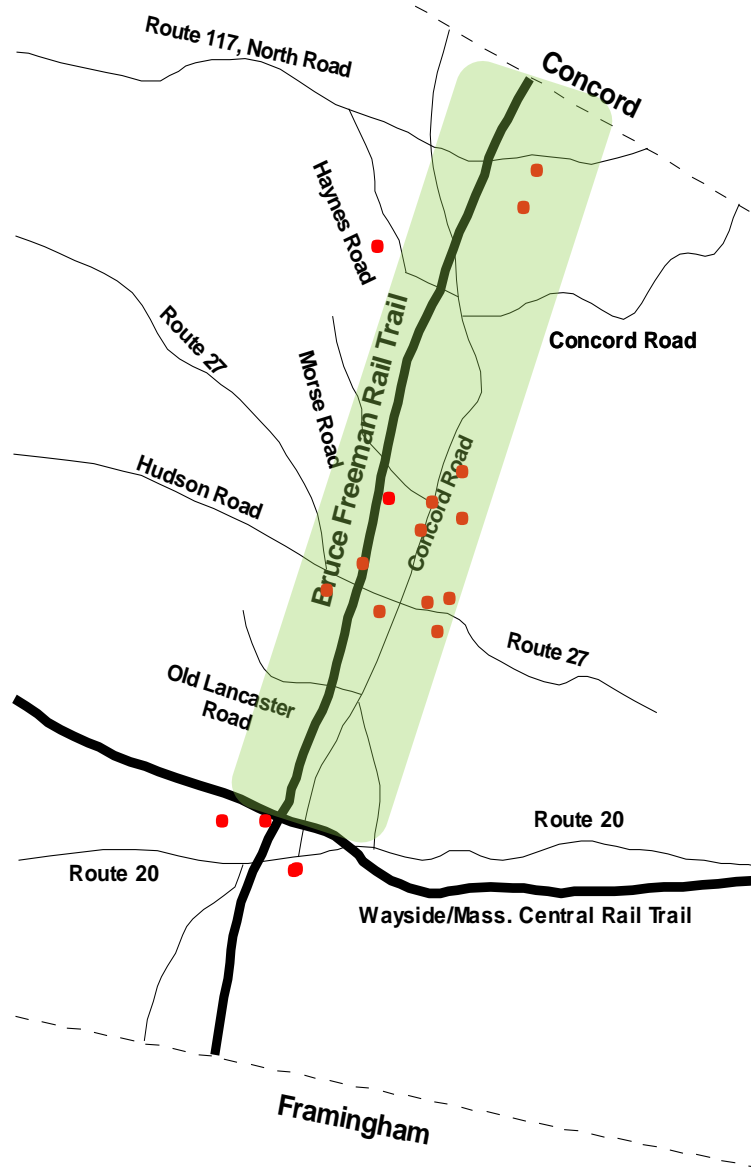
## Bruce Freeman Rail Trail

### Road Crossings, north to south

- Rt. 117 (North Road)
- Pantry Road
- Haynes Road
- Morse Road
- Hudson Road, Rt. 27
- Old Lancaster Rd.
- Codjer Lane
- Station Road - Diamond



# Some spots that are easily accessed from Sudbury's **BFRT**



- Frost Farm (residential)
- Davis Field (recreation)
- Haynes Elementary School
- Lincoln-Sudbury High School
- Featherland Fields & Recreation Area
- Broadacres Farm
- Nixon Elementary School
- St. Elizabeth Church
- Parkinson Fields (recreation)
- Sudbury Town Square (commercial)
- Town Center, Town Hall
- Noyes Elementary School
- Heritage Park
- Police & Fire Department Headquarters
- Chiswick Park Area (commercial)
- Sudbury Commercial District
- Meadow Walk, residential and commercial

## Railroad tie removal near Hudson Road



## Rail removal near Ti Sales



# Extending the Sudbury segment of the Bruce Freeman Rail Trail

Planning has begun to  
extend the Bruce  
Freeman Rail Trail  
south from the  
diamond to Rt. 20 and  
to the Framingham  
line. 