

DATE and TIME this paper received by Registrars.

PETITION FOR A SPECIAL TOWN MEETING

Pursuant to General Laws, Chapter 39, section 10.

200 Signatures Required

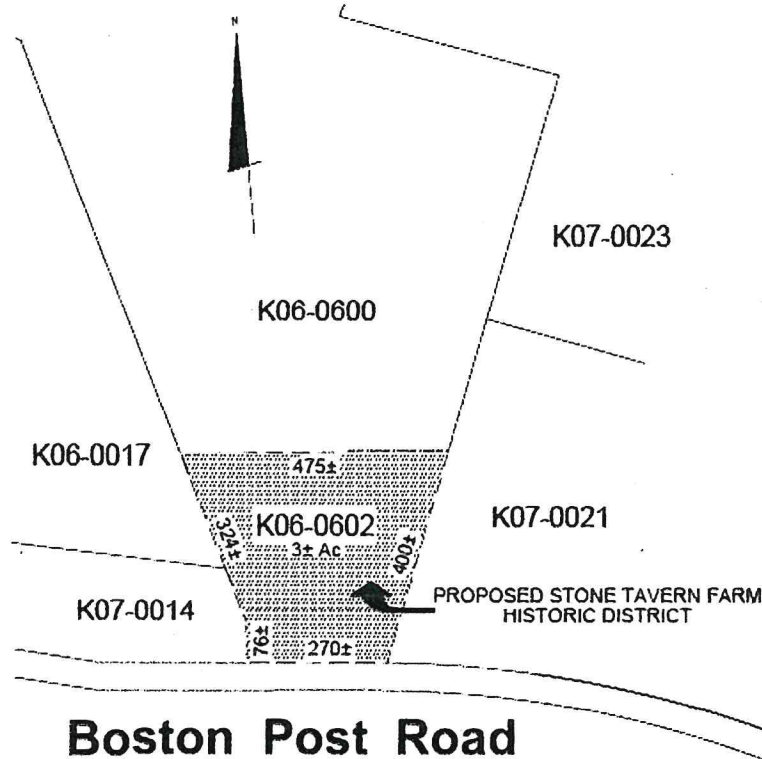
TOWN Sudbury

SUBJECT OR SUBJECTS REQUESTED FOR ACTION AT THE MEETING:

(To be filled in by petitioners. If space is insufficient, attach additional page of description to each petition form before signatures are gathered.)

We, the undersigned, being registered voters of the Town of Sudbury, hereby petition the Board of Selectmen to call a Special Town Meeting and to include in the Warrant for said Meeting the following article:

To see if the Town will vote, pursuant to Section 12 of Chapter 40 of the Acts and Resolves of 1963, to create a new local historic district to be known as the Stone Tavern Farm Historic District to include a 3 +/- Ac. portion of land shown as Assessor's Parcel K06-0602 with the address of 554 Boston Post Road on a map entitled "Proposed Stone Tavern Farm Historic District", dimensions derived from Compiled Plan of the Stone Tavern Farm prepared by the Town of Sudbury Engineering Department, endorsed July 8, 1986, Plan #1089 of 1986, Southern District Middlesex Registry of Deeds, Book 17297 Page 517;



or act on anything relative thereto.

SIGNER INFORMATION

INSTRUCTIONS TO SIGNERS

For your signature to be valid, you must be a registered voter in the town and your signature should be written substantially as registered. Do NOT sign more than one petition for the same subject.

If you are prevented by physical disability from writing, you may authorize some person to write your name and residence in your presence.

If you have NOT moved since January 1 of this year, you need complete only columns I and II.

If you HAVE moved since January 1 of this year, you must complete columns I, II and III.

SIGNER'S STATEMENT

We, the undersigned, are qualified voters of the Town of — Sudbury —, and in accordance with the provisions of law, request a special town meeting for the purposes above.

## Petition Warrant Report

The proposed single-property local historic district, the Stone Tavern Farm Historic District, offers the Town the opportunity, at a time when other historic properties are continually being destroyed, to protect a highly significant historical property rare to exist in Sudbury today that dates to the 18<sup>th</sup> century. The Stone Tavern Farm – its c.1730 Farmhouse with original interior features and c 1850 Barn - represents the full spectrum of Sudbury's history embodying the town's farming rural town character and history from its beginnings as Sudbury Plantation through the decades and centuries of change and development to the present day. Located in South Sudbury an area central to commerce and agricultural development from the town's earliest periods, the history of this property is rich with layers of historical significance. It has been owned and operated as a tannery and bakery by Wayside Inn owner Ezekial Howe during the American Revolution, a tavern and mail stop on the transportation route of the Boston Post Road to New York before and after the Revolution, and eventually transitioned to farming when owned by William Stone before the Civil War, and to dairying. A descendant of Sudbury Plantation 1638 grantee John Stone, William Stone of East Sudbury, purchased the property in 1819 to operate a tavern. The Stone family is directly descended from and intertwined with other prominent early families of Sudbury – Peter Noyes, Edmund Rice, and Walter Haynes, including descended from Josiah Haynes who died at the Battle of Lexington in 1775, and many others who fought in the Revolutionary War. The property is situated in a historic neighborhood which was the epicenter of Sudbury's agricultural greenhouse operations and farming since the 1880's. The residents of Sudbury are petitioning our Town Meeting to recognize and protect the Stone Tavern Farm to enact a historic district appropriately named to ensure that all generations of Sudbury residents understand and remember the importance of how Sudbury began, developed and was shaped.