

RECEIVED  
OCT 24 2016

BY: .....



# The Coolidge at Sudbury - Phase 2

Sudbury, MA

Proposed Site Plan

October 24, 2016

SPONSOR : B'nai B'rith Housing

DEVELOPER : Covenant Commonwealth Corporation

ARCHITECT : The Architectural Team

**tat** | the architectural team

13129



The Coolidge at Sudbury - Phase 2  
Sudbury, MA

Existing Site Plan

October 24, 2016

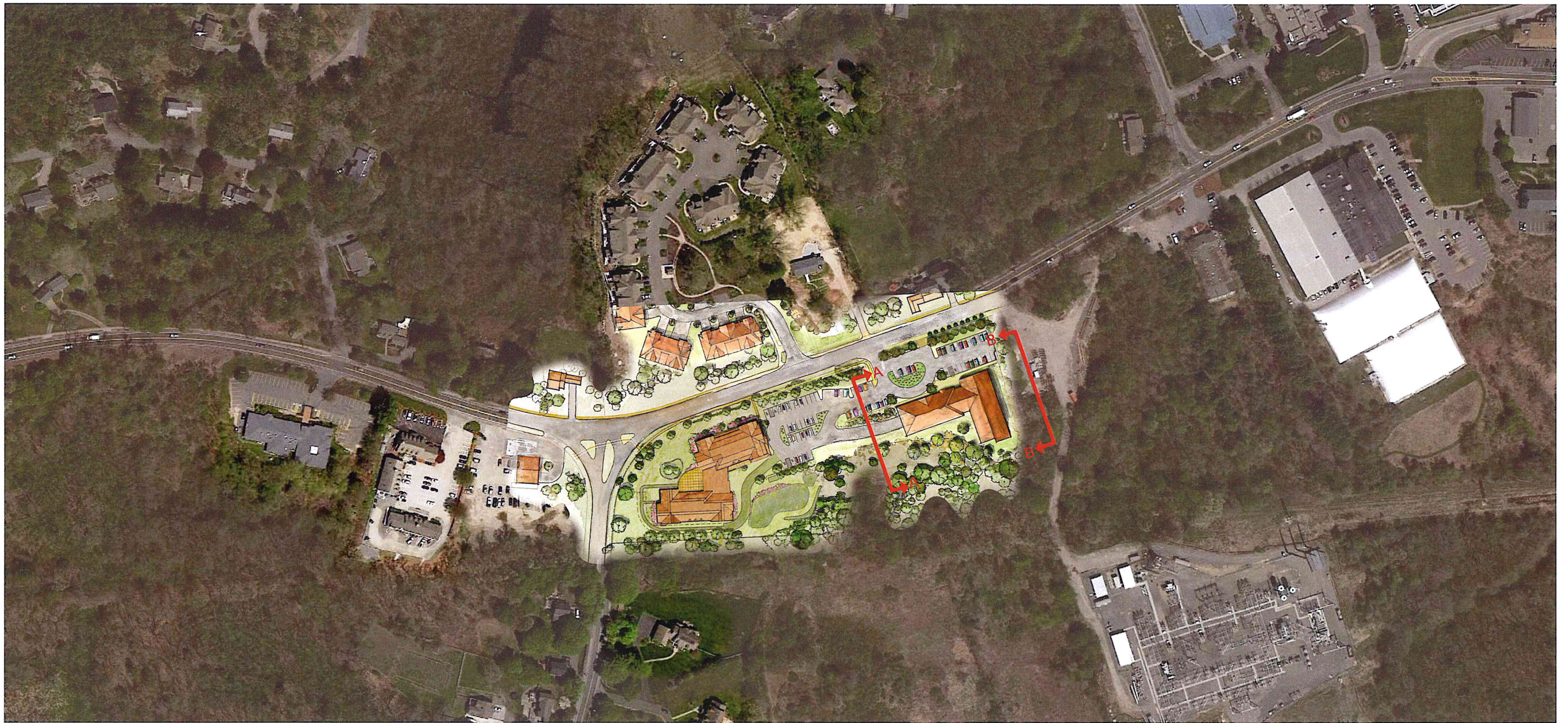
SPONSOR : B'nai B'rith Housing

DEVELOPER : Covenant Commonwealth Corporation

ARCHITECT : The Architectural Team

tat | the architectural team

15129



Overall Site Plan



Elevation A-A



Elevation B-B

# The Coolidge at Sudbury - Phase 2

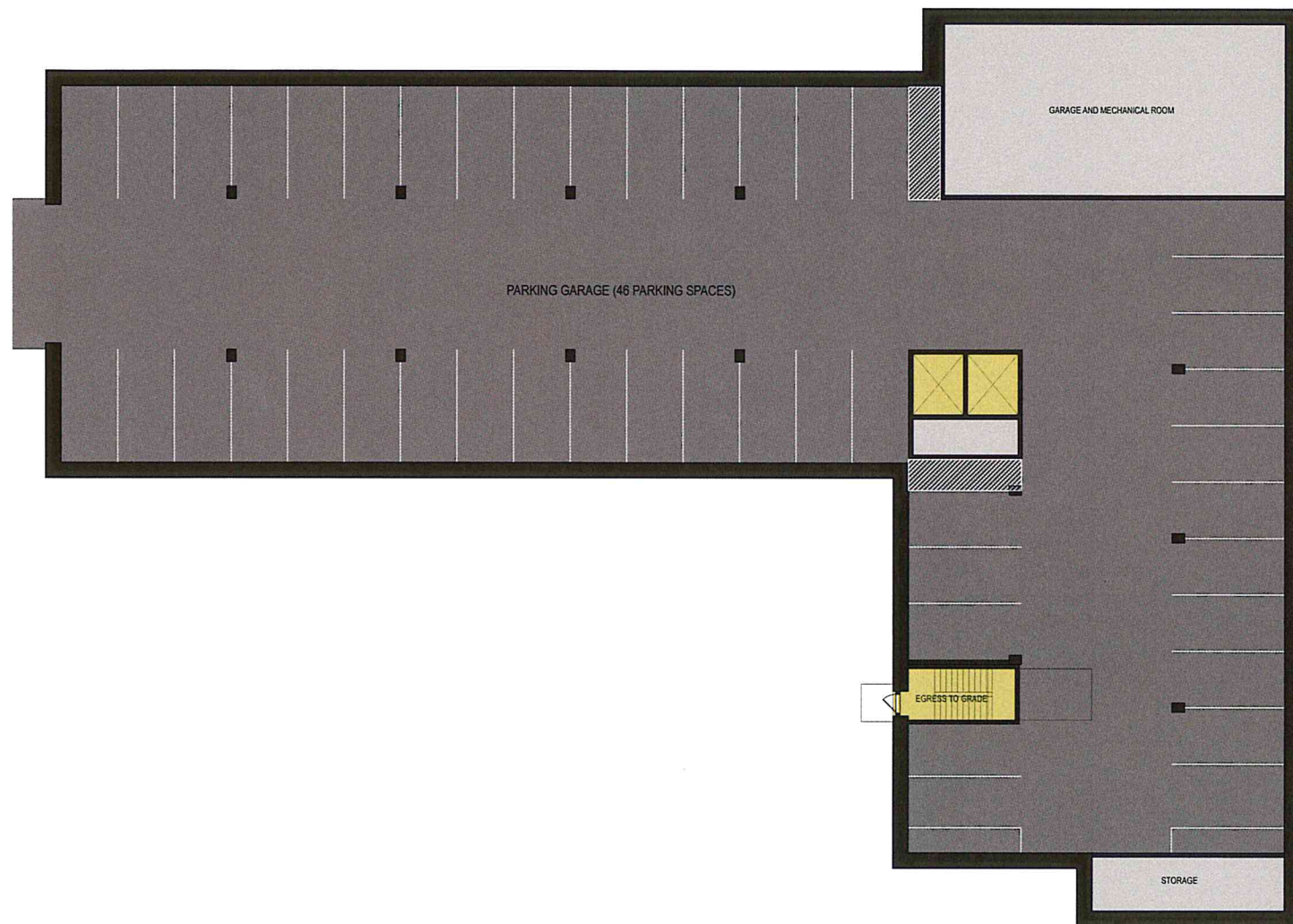
Sudbury, MA

Proposed Overall Site Plan  
& Elevations

October 24, 2016

SPONSOR : B'nai B'rith Housing  
 DEVELOPER : Covenant Commonwealth Corporation  
 ARCHITECT : The Architectural Team

**tat** | the architectural team



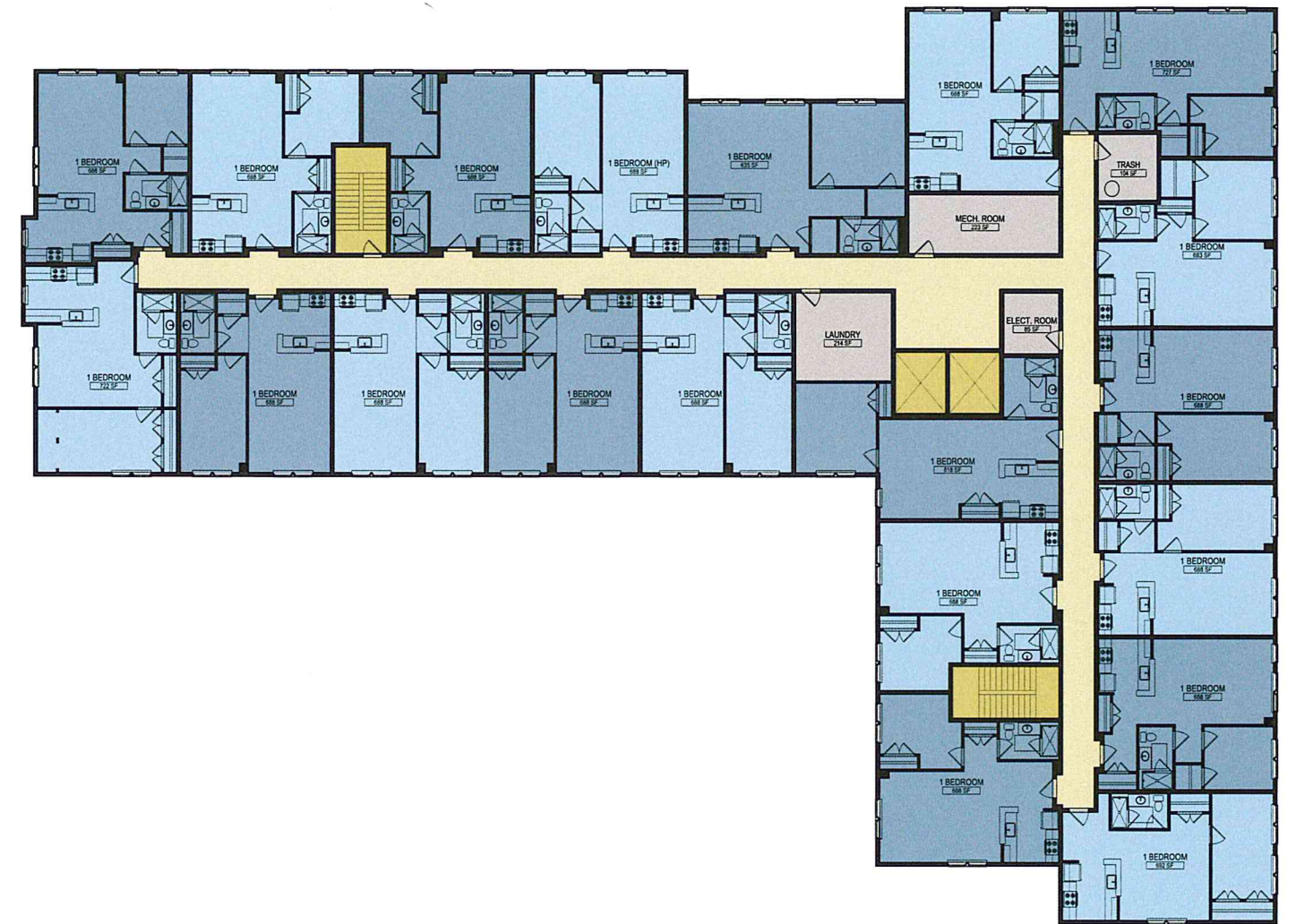
Parking Level Floor Plan



Level 01 Floor Plan



Level 02 Floor Plan



Level 03 Floor Plan



The Coolidge at Sudbury - Phase 2  
Sudbury, MA

Proposed West Elevation

October 24, 2016

SPONSOR : B'nai B'rith Housing

DEVELOPER : Covenant Commonwealth Corporation

ARCHITECT : The Architectural Team

tat | the architectural team

15129



The Coolidge at Sudbury - Phase 2  
Sudbury, MA

Proposed East Elevation

October 24, 2016

SPONSOR : B'nai B'rith Housing

DEVELOPER : Covenant Commonwealth Corporation

ARCHITECT : The Architectural Team

tat | the architectural team

15129



The Coolidge at Sudbury - Phase 2  
Sudbury, MA

Proposed South Elevation

October 24, 2016

SPONSOR : B'nai B'rith Housing

DEVELOPER : Covenant Commonwealth Corporation

ARCHITECT : The Architectural Team

tat | the architectural team

15129





The Coolidge at Sudbury - Phase 2  
Sudbury, MA

Proposed North Elevation

October 24, 2016

SPONSOR : B'nai B'rith Housing

DEVELOPER : Covenant Commonwealth Corporation

ARCHITECT : The Architectural Team

tat | the architectural team

15129



The Coolidge at Sudbury - Phase 2  
Sudbury, MA

Proposed Perspective View

October 24, 2016

SPONSOR : B'nai B'rith Housing  
DEVELOPER : Covenant Commonwealth Corporation  
ARCHITECT : The Architectural Team

tat | the architectural team