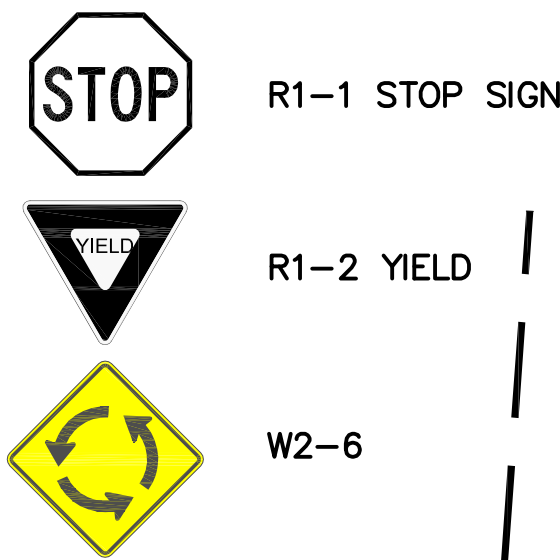
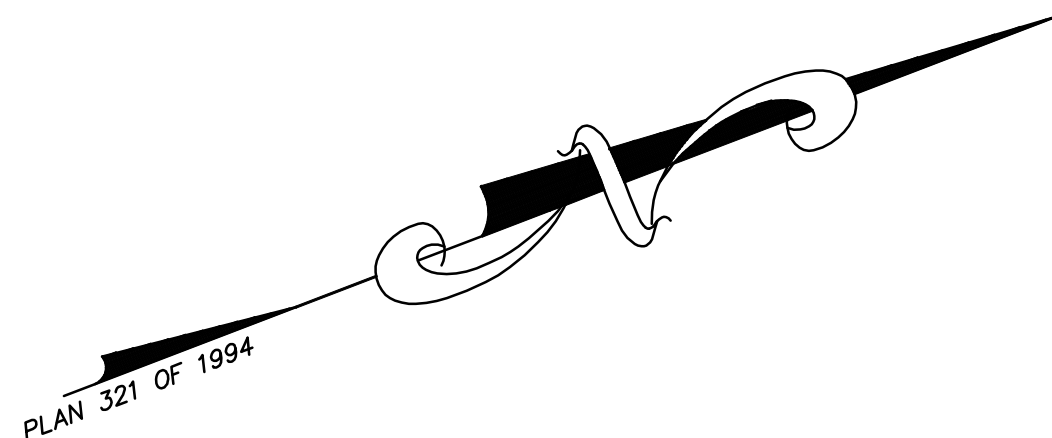
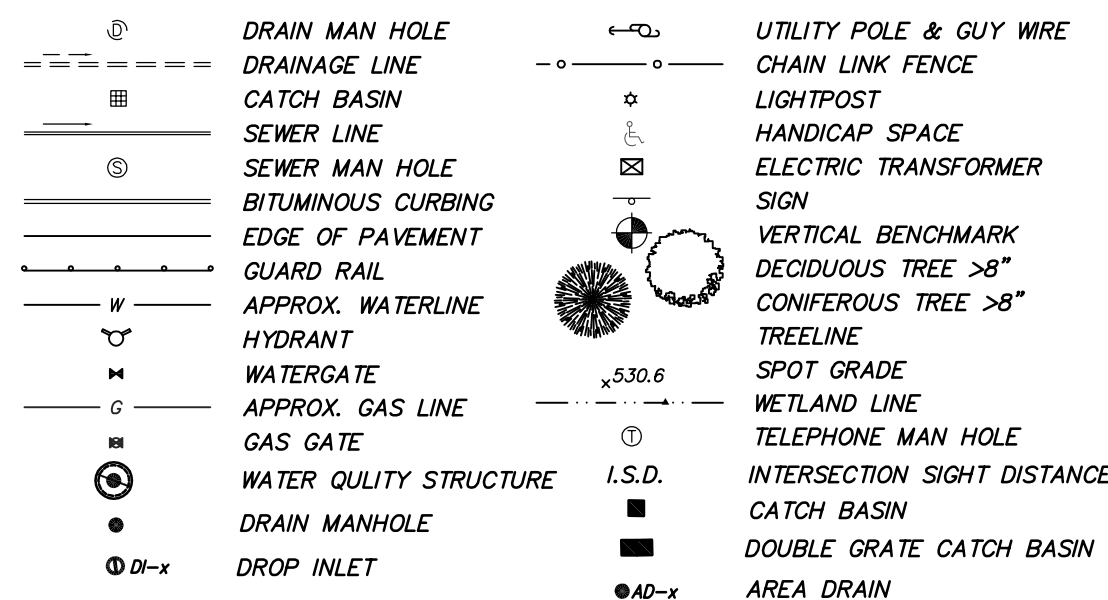


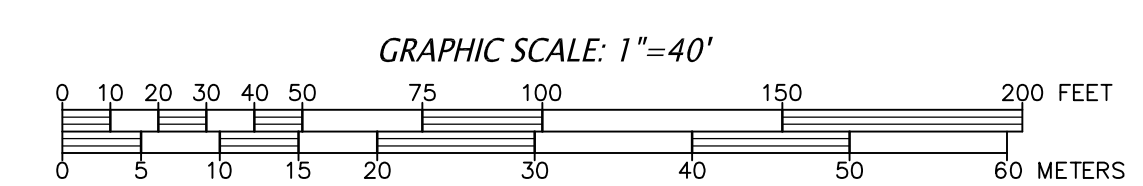
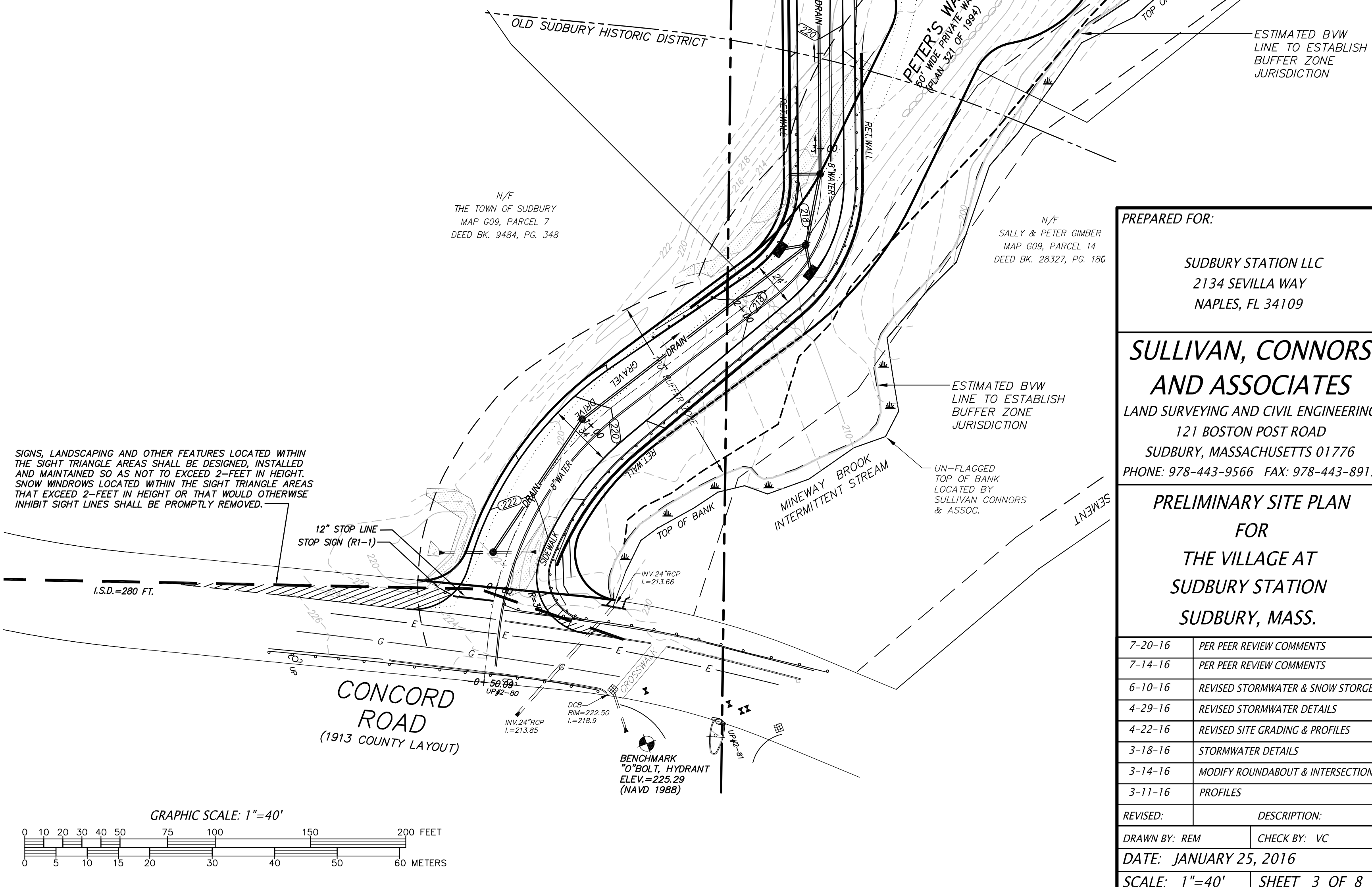
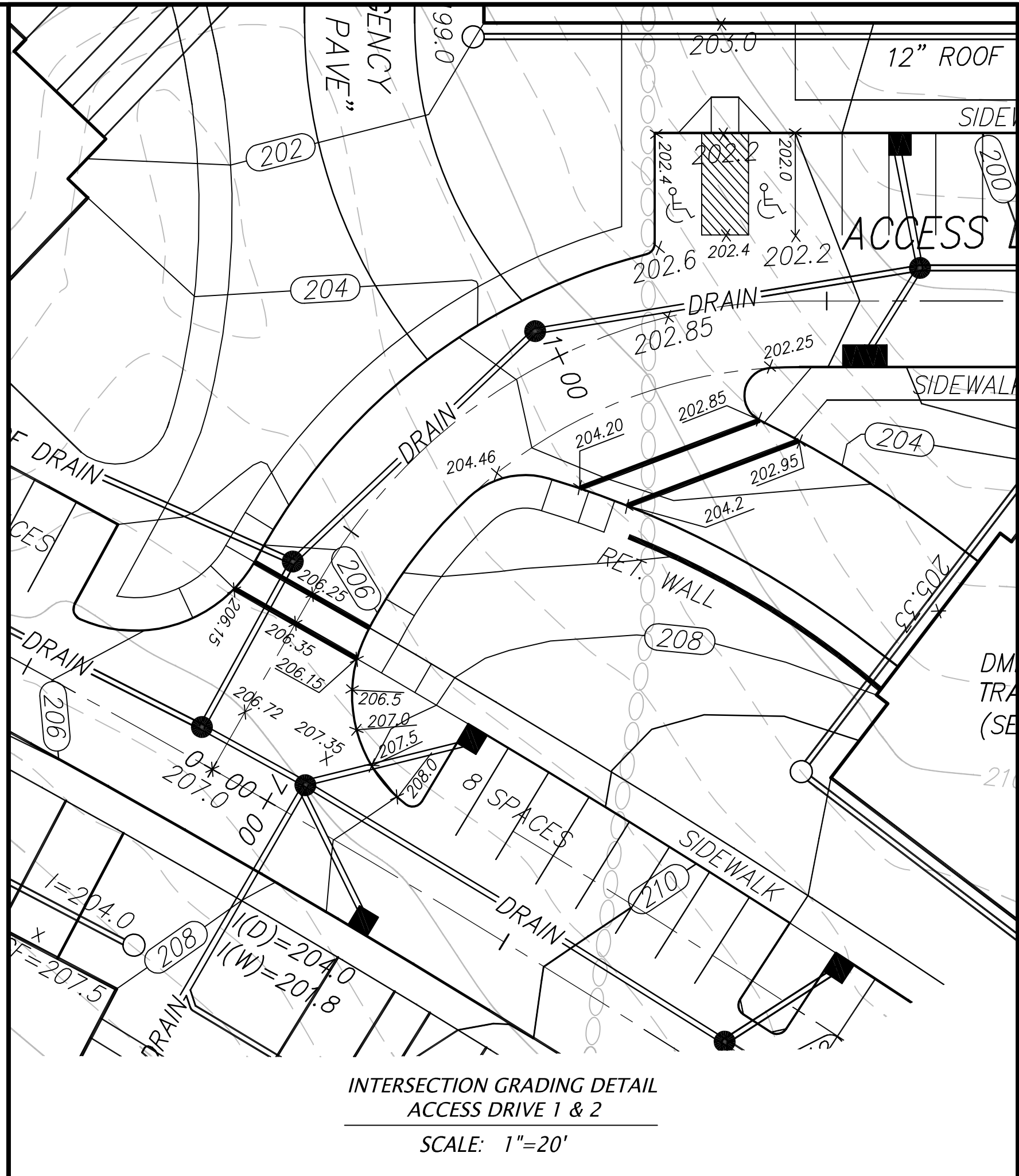
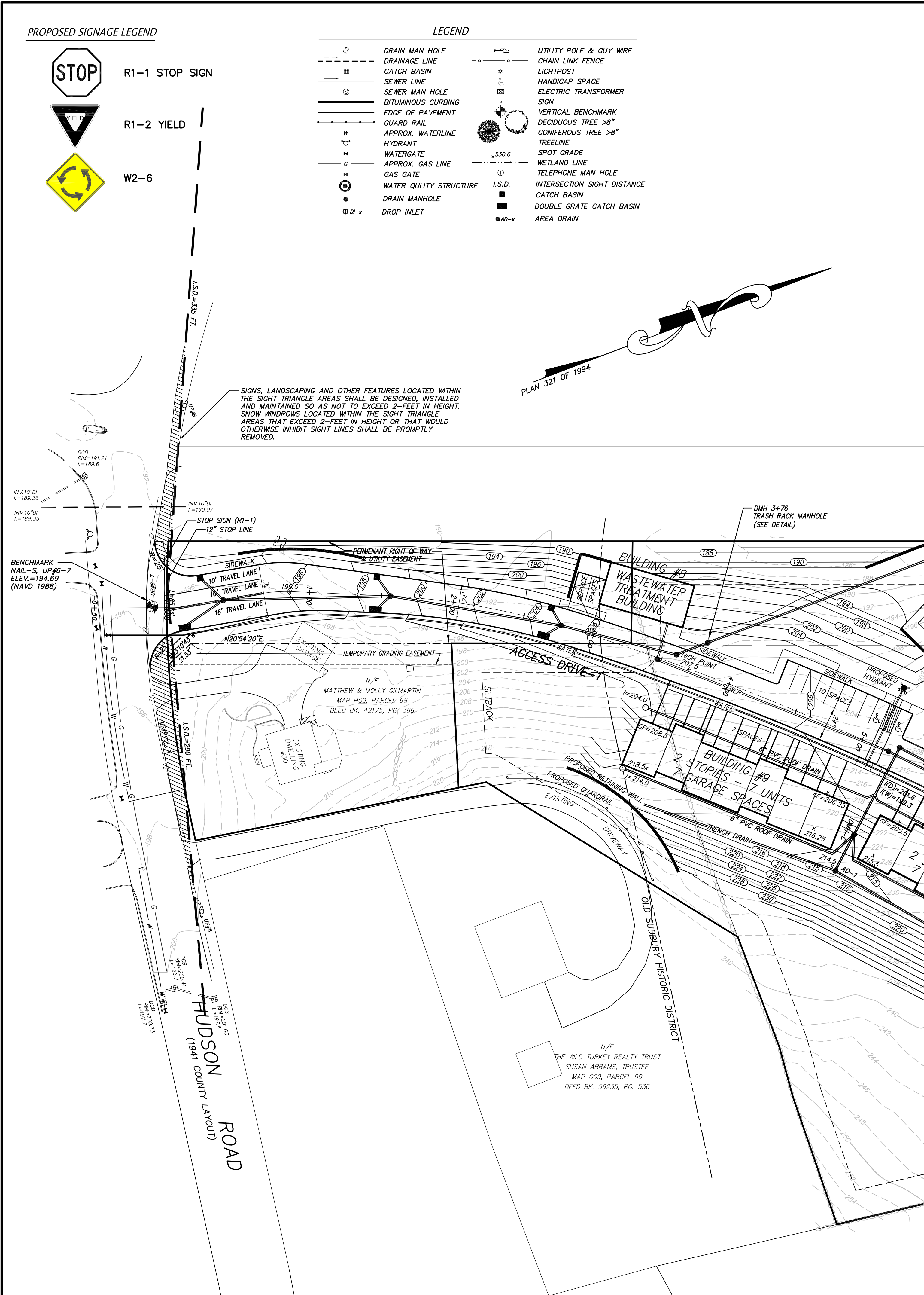
PROPOSED SIGNAGE LEGEND



LEGEND



SIGNS, LANDSCAPING AND OTHER FEATURES LOCATED WITHIN THE SIGHT TRIANGLE AREAS SHALL BE DESIGNED, INSTALLED AND MAINTAINED SO AS NOT TO EXCEED 2'-FEET IN HEIGHT. SNOW WINDOWS LOCATED WITHIN THE SIGHT TRIANGLE AREAS THAT EXCEED 2'-FEET IN HEIGHT OR THAT WOULD OTHERWISE INHIBIT SIGHT LINES SHALL BE PROMPTLY REMOVED.



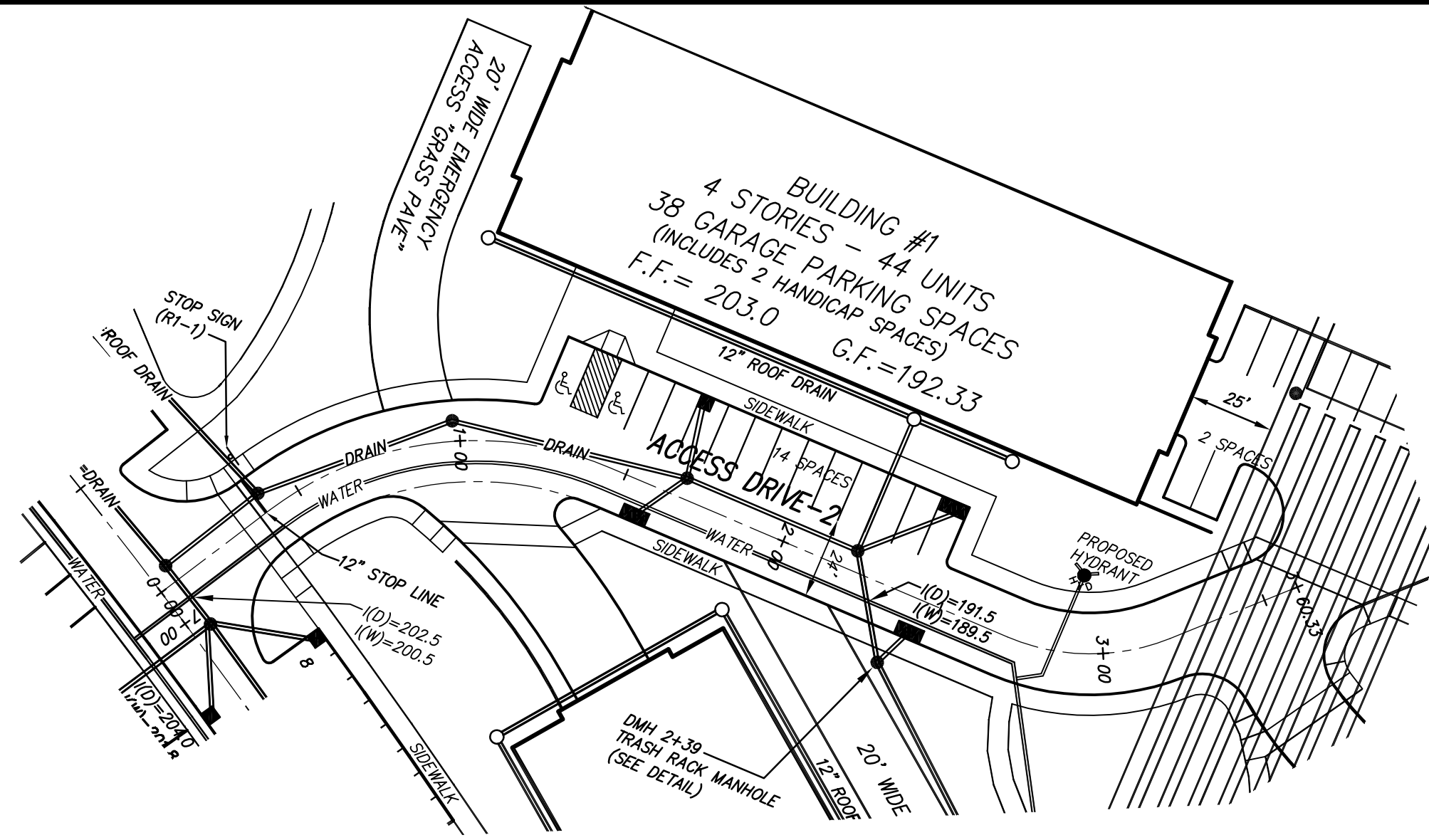
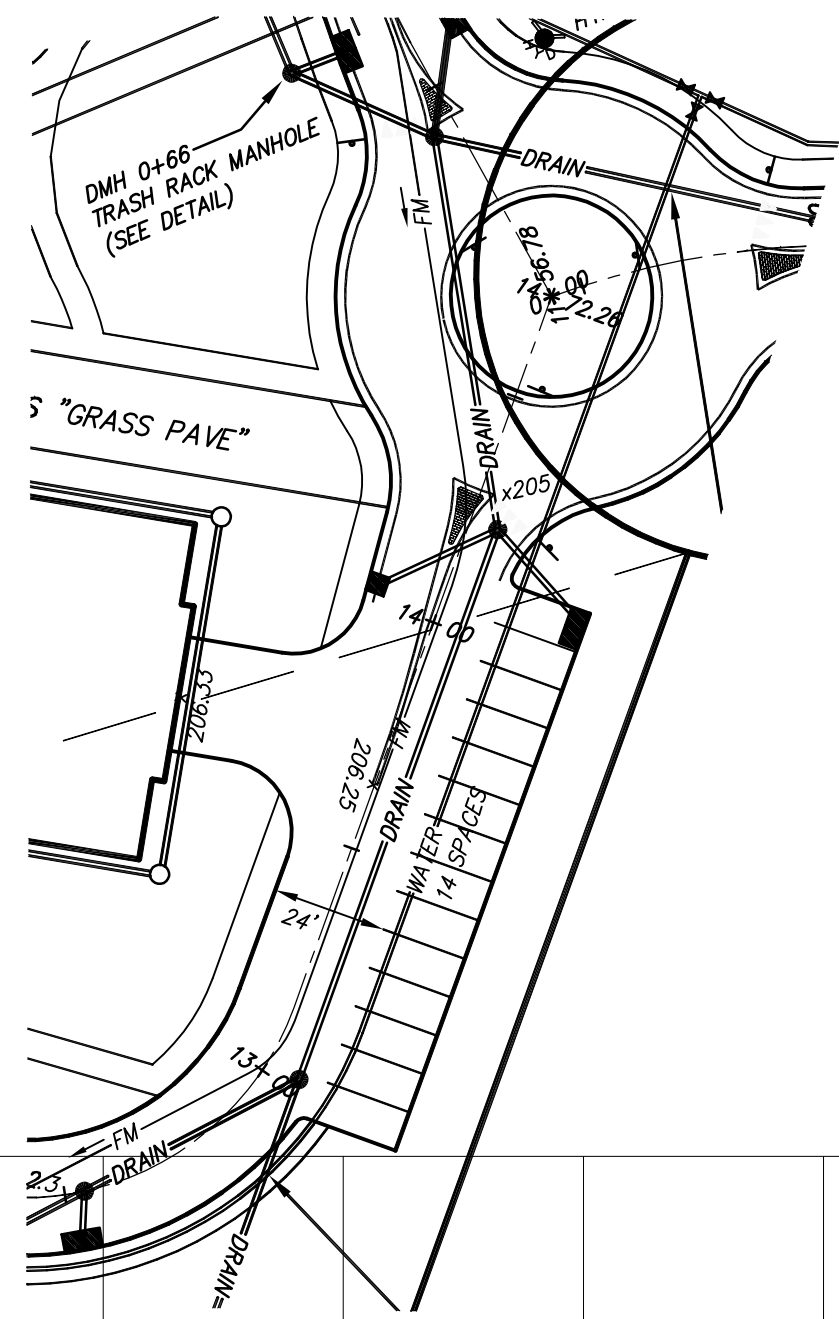
PREPARED FOR:  
 SUDBURY STATION LLC  
 2134 SEVILLA WAY  
 NAPLES, FL 34109

**SULLIVAN, CONNORS AND ASSOCIATES**  
 LAND SURVEYING AND CIVIL ENGINEERING  
 121 BOSTON POST ROAD  
 SUDBURY, MASSACHUSETTS 01776  
 PHONE: 978-443-9566 FAX: 978-443-8915

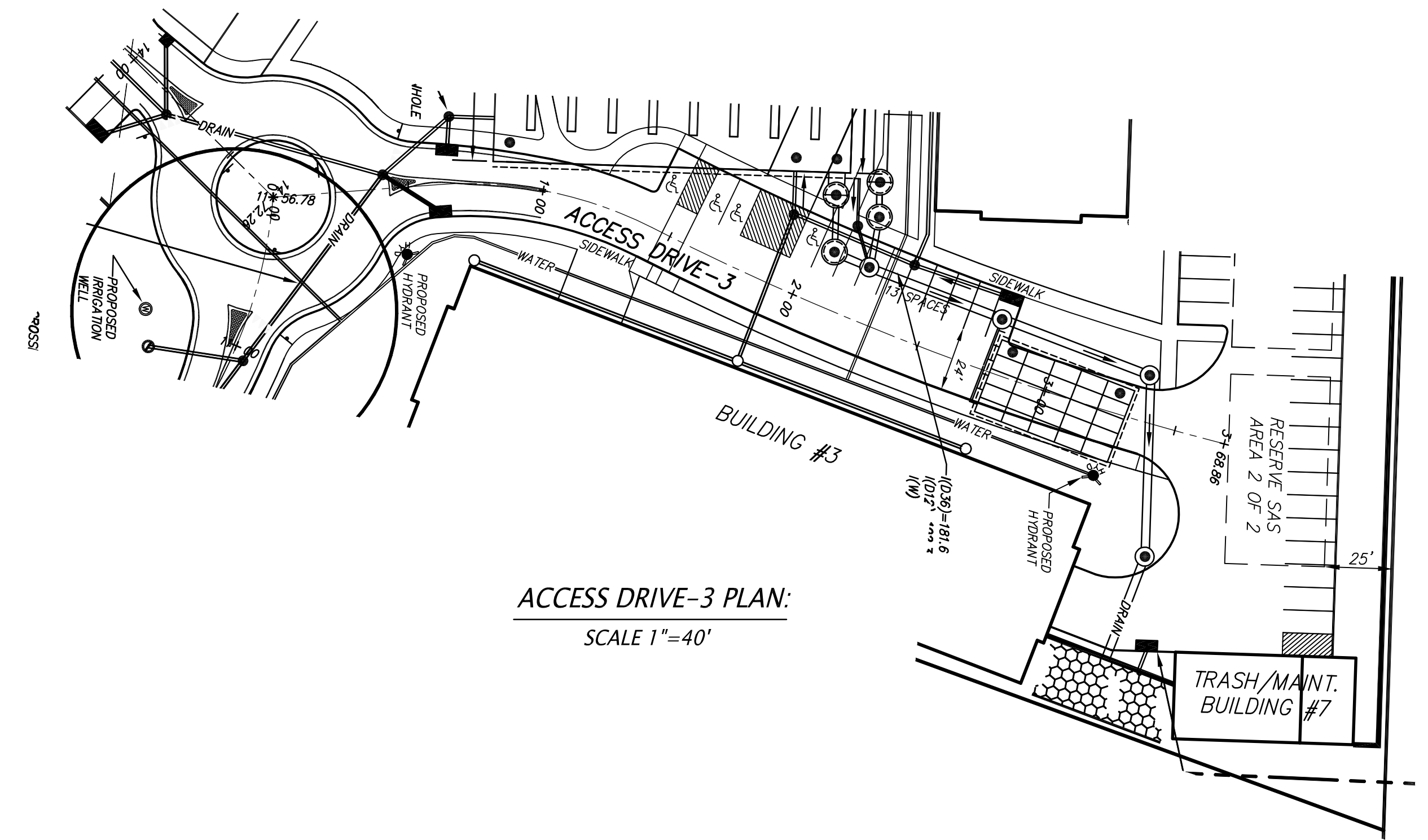
**PRELIMINARY SITE PLAN FOR THE VILLAGE AT SUDBURY STATION, SUDBURY, MASS.**

7-20-16	PER PEER REVIEW COMMENTS
7-14-16	PER PEER REVIEW COMMENTS
6-10-16	REVISED STORMWATER & SNOW STORAGE
4-29-16	REVISED STORMWATER DETAILS
4-22-16	REVISED SITE GRADING & PROFILES
3-18-16	STORMWATER DETAILS
3-14-16	MODIFY ROUNDABOUT & INTERSECTIONS
3-11-16	PROFILES
REVISED:	DESCRIPTION:
DRAWN BY: REM	CHECK BY: VC
DATE: JANUARY 25, 2016	
SCALE: 1"=40'	SHEET 3 OF 8

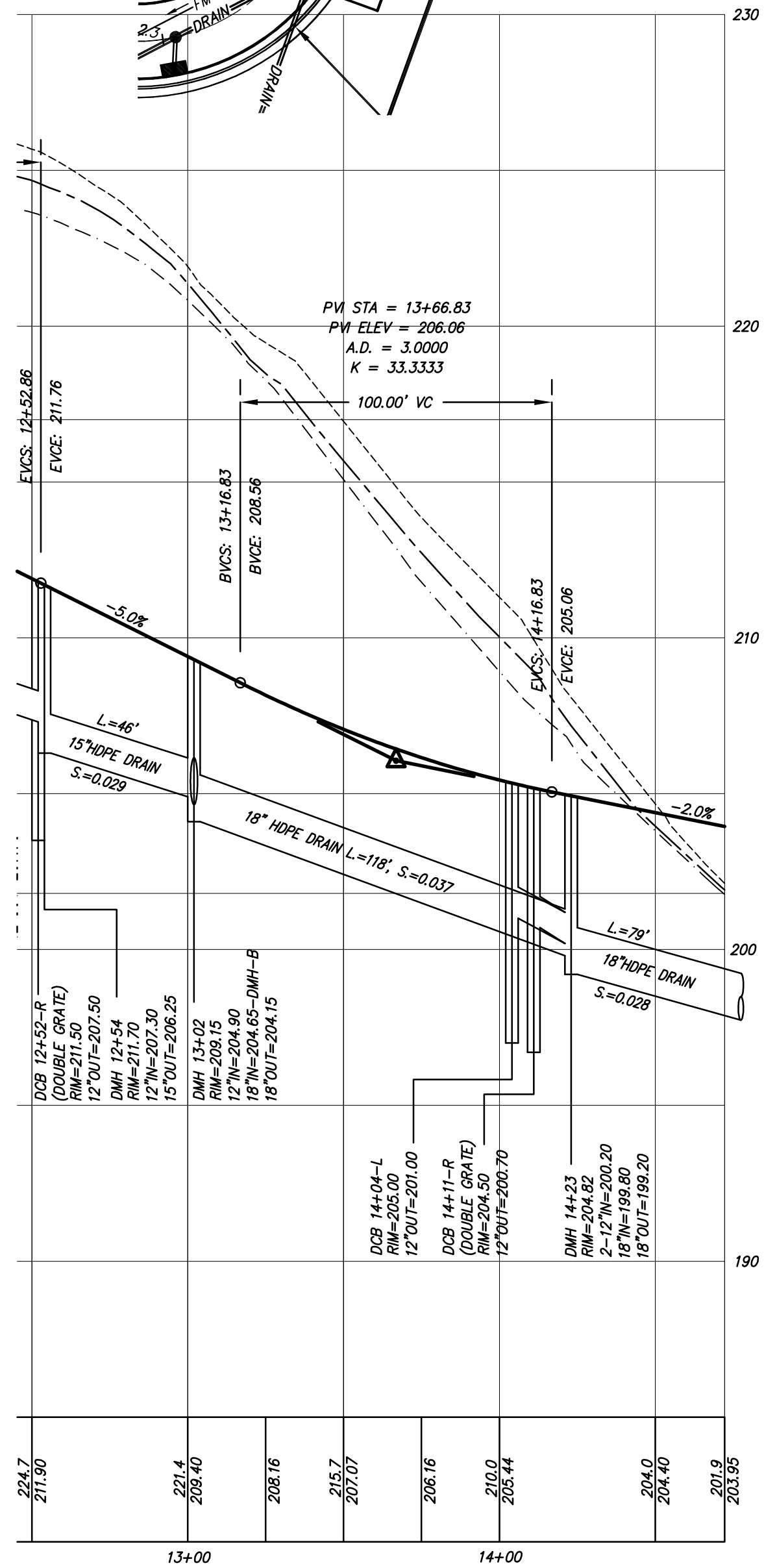




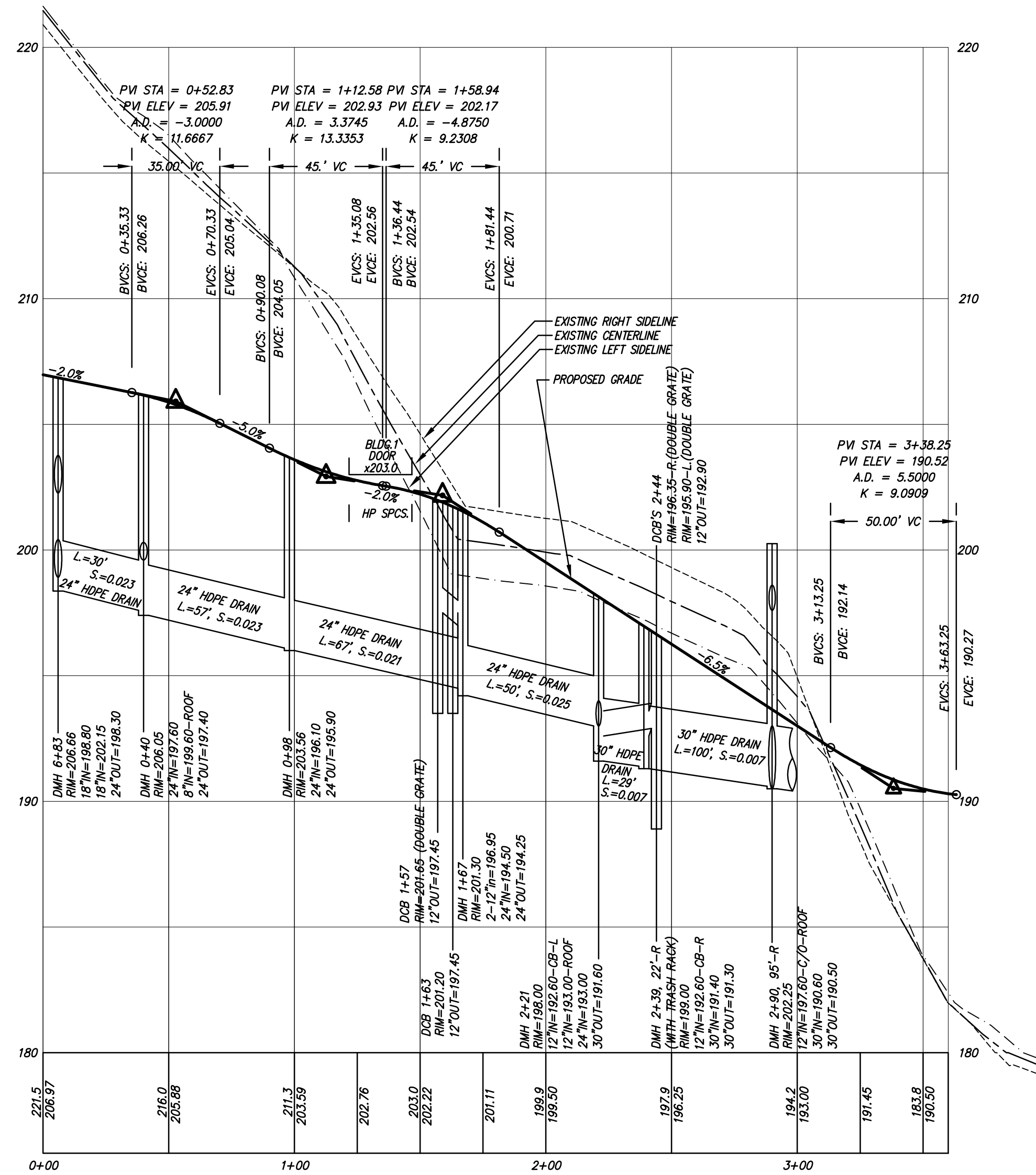
ACCESS DRIVE-2 PLAN:  
SCALE 1"=40'



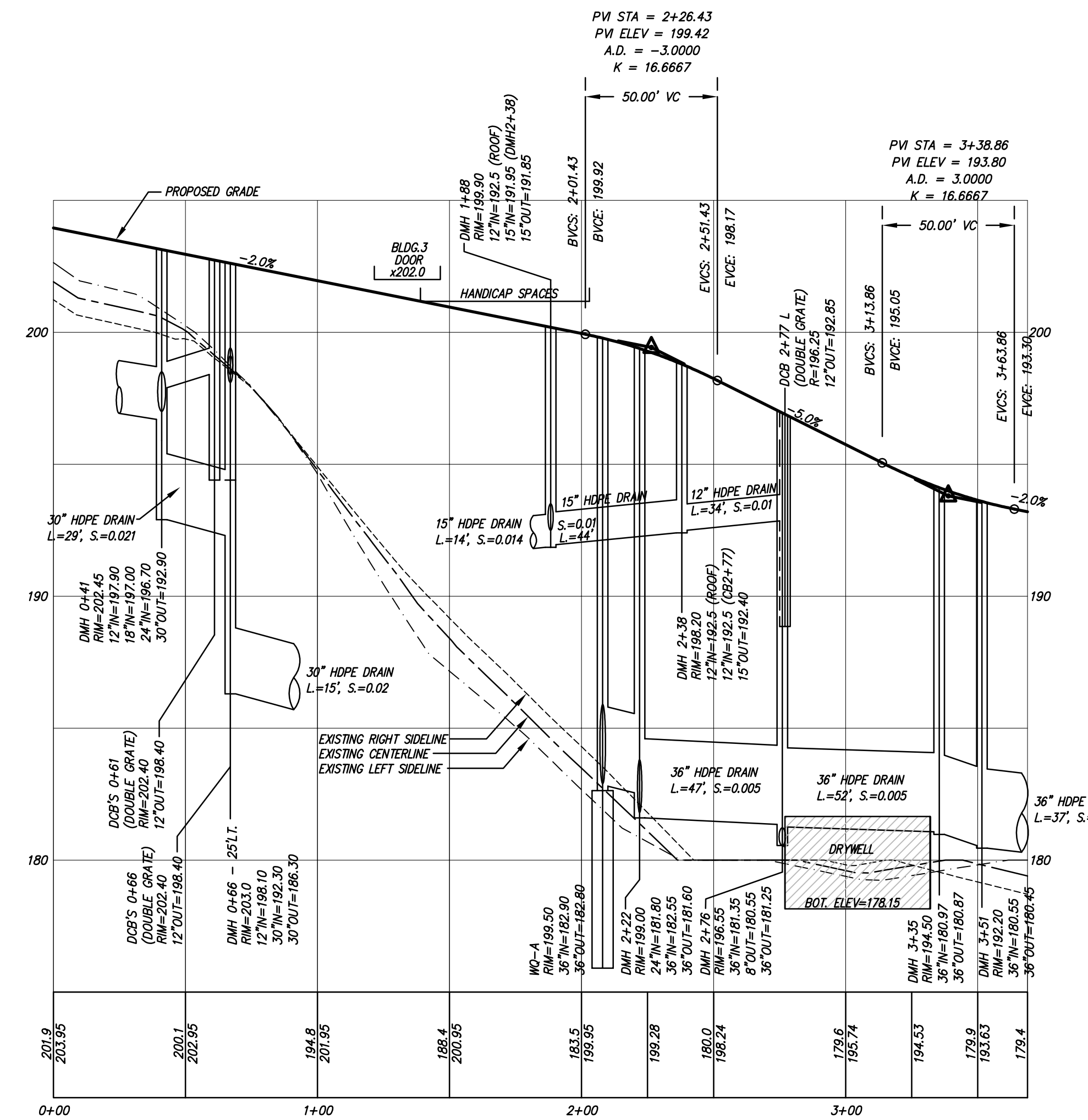
ACCESS DRIVE-3 PLAN:  
SCALE 1"=40'



ACCESS DRIVE-1 PROFILE:  
1"=40' HORIZONTAL  
1"=4' VERTICAL



ACCESS DRIVE-2 PROFILE:  
1"=40' HORIZONTAL  
1"=4' VERTICAL



ACCESS DRIVE-3 PROFILE:  
1"=40' HORIZONTAL  
1"=4' VERTICAL

PREPARED FOR:

SUDBURY STATION LLC  
2134 SEVILLA WAY  
NAPLES, FL 34109

**SULLIVAN, CONNORS  
AND ASSOCIATES**

LAND SURVEYING AND CIVIL ENGINEERING  
121 BOSTON POST ROAD  
SUDBURY, MASSACHUSETTS 01776  
PHONE: 978-443-9566 FAX: 978-443-8915

PRELIMINARY SITE PLAN  
FOR  
THE VILLAGE AT  
SUDBURY STATION  
SUDBURY, MASS.

3-18-16	STORMWATER DETAILS	7-20-16	PER PEER REVIEW COMMENTS
3-14-16	MODIFY ROUNDABOUT & INTERSECTIONS	7-14-16	PER PEER REVIEW COMMENTS
3-11-16	PROFILES	7-14-16	PER PEER REVIEW COMMENTS
REVISED:	DESCRIPTION:	6-10-16	REVISED STORMWATER & SNOW STORAGE
DRAWN BY: REM	CHECK BY: VC	4-29-16	REVISED STORMWATER DETAILS
DATE: JANUARY 25, 2016		4-22-16	REVISED SITE GRADING & PROFILES
SCALE: 1"=40'	SHEET 5 OF 9	REVISED:	DESCRIPTION: