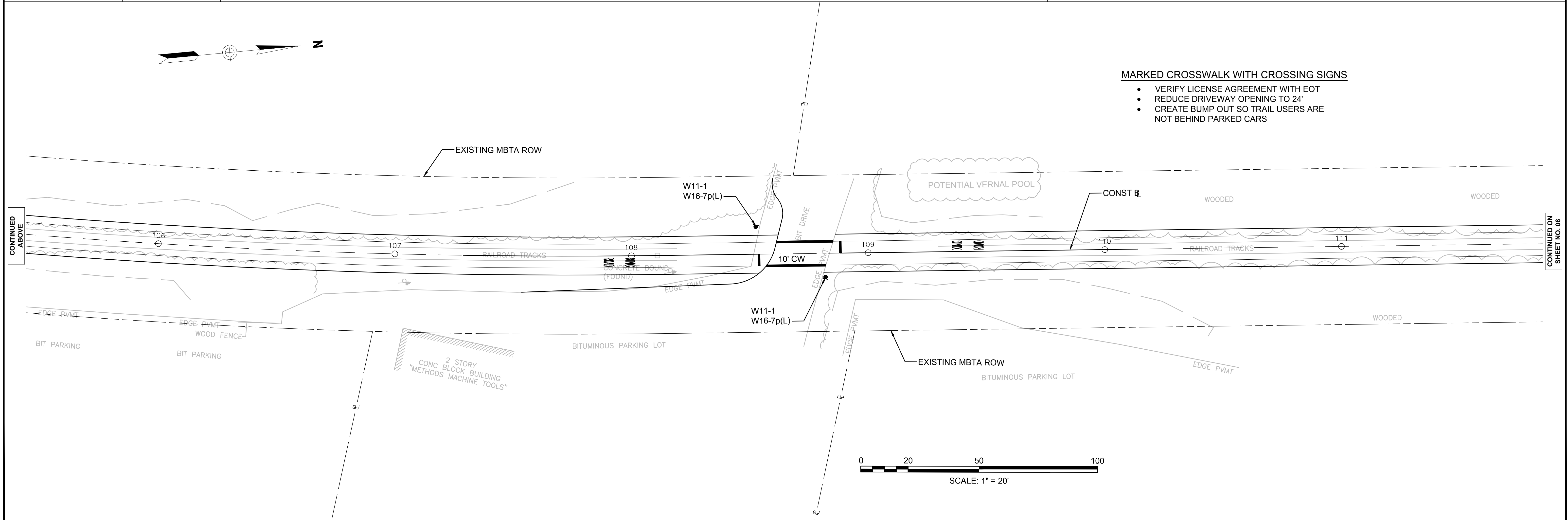


CONTINUED BELOW

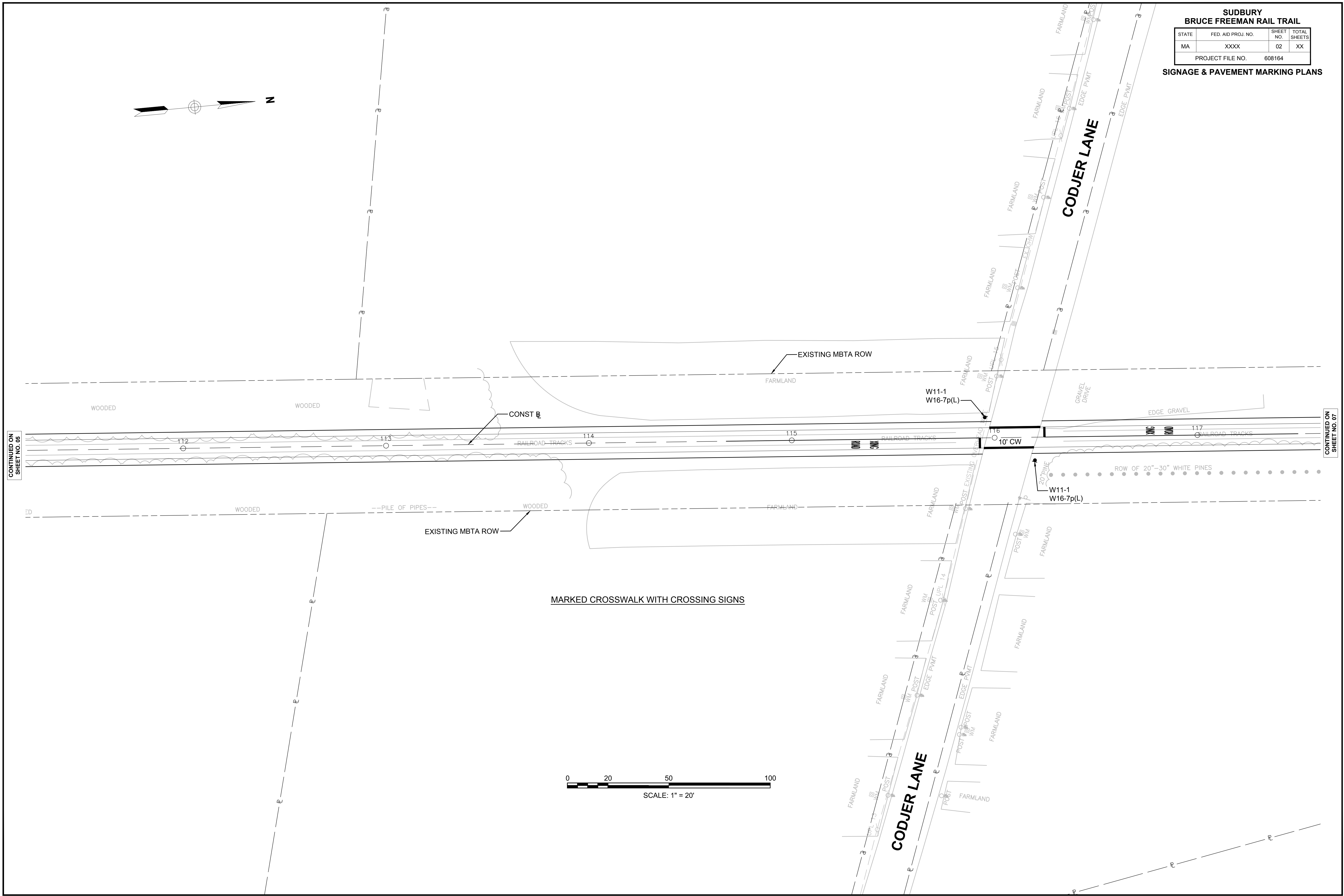
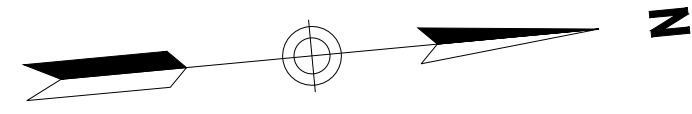


MARKED CROSSWALK WITH CROSSING SIGNS

- VERIFY LICENSE AGREEMENT WITH EOT
- REDUCE DRIVEWAY OPENING TO 24'
- CREATE BUMP OUT SO TRAIL USERS ARE NOT BEHIND PARKED CARS

CONTINUED ABOVE

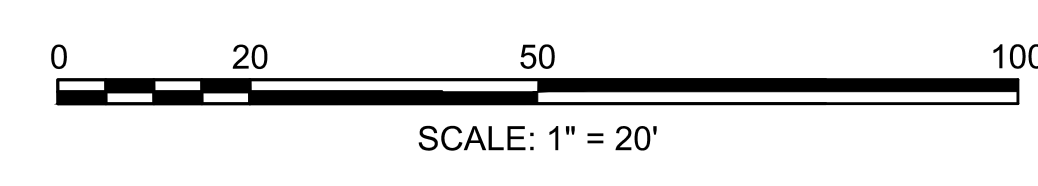
CONTINUED ON SHEET NO. 02



CONTINUED ON SHEET NO. 05

CONTINUED ON SHEET NO. 07

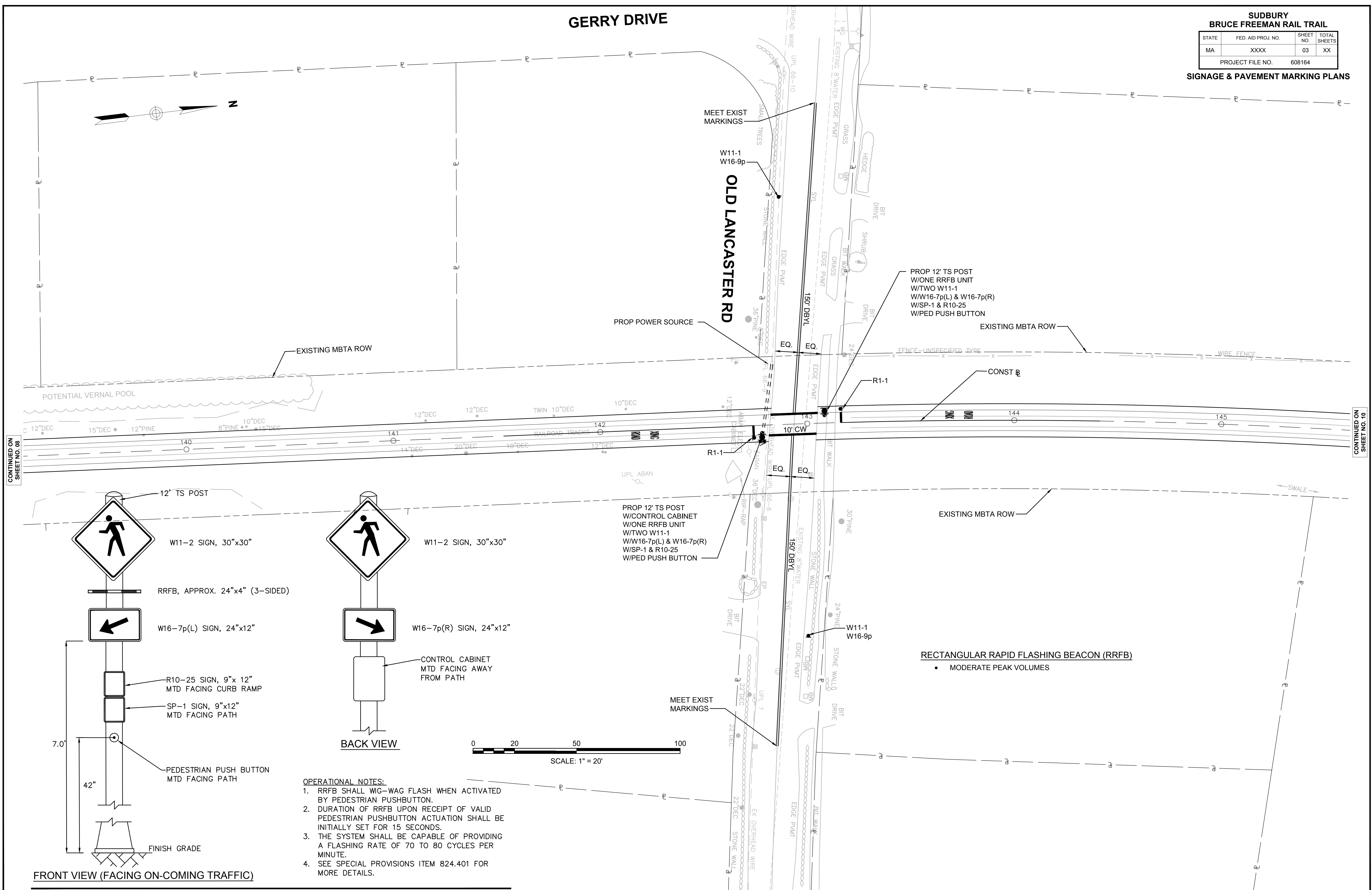
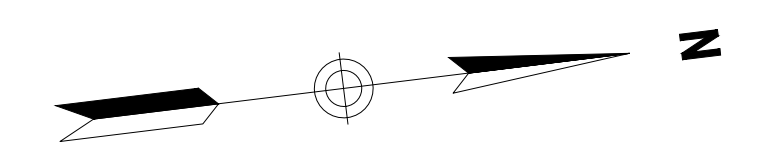
MARKED CROSSWALK WITH CROSSING SIGNS



GERRY DRIVE

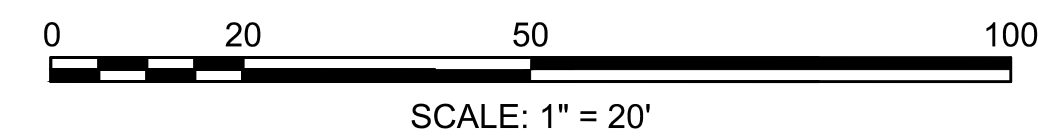
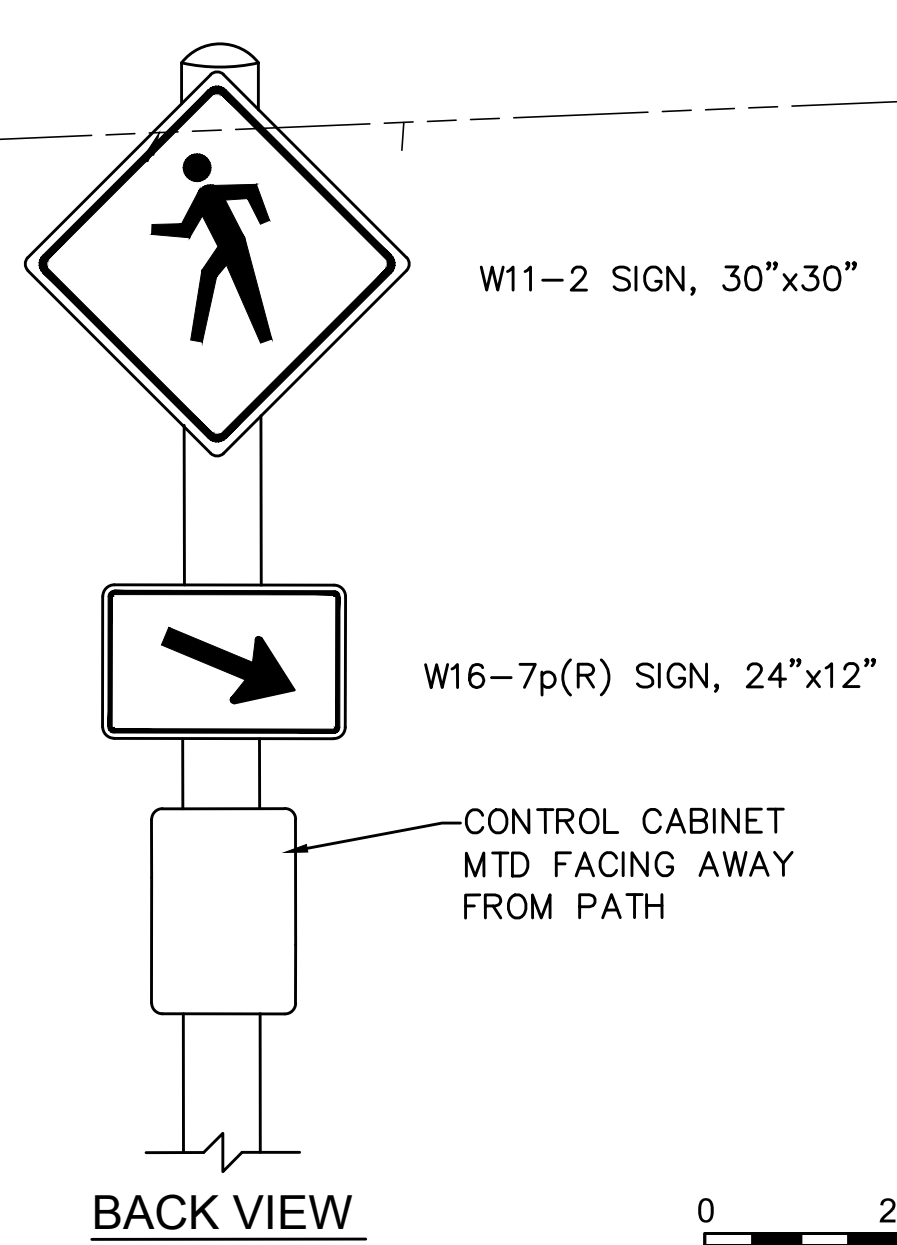
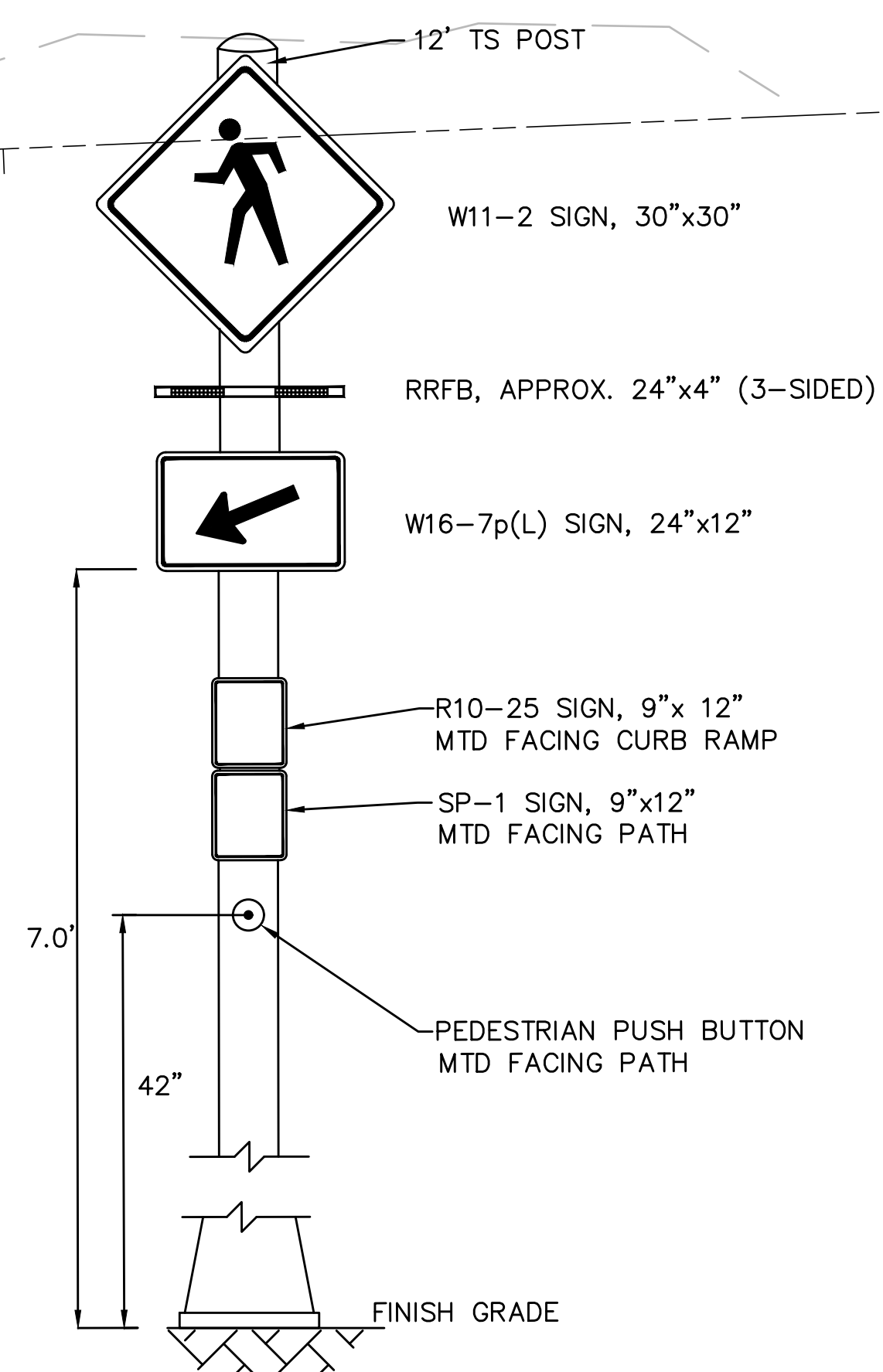
SUDBURY BRUCE FREEMAN RAIL TRAIL			
STATE	FED. AID PROJ. NO.	SHEET NO.	TOTAL SHEETS
MA	XXXX	03	XX
PROJECT FILE NO.		608164	

SIGNAGE & PAVEMENT MARKING PLANS



CONTINUED ON
SHEET NO. 08

CONTINUED ON
SHEET NO. 10

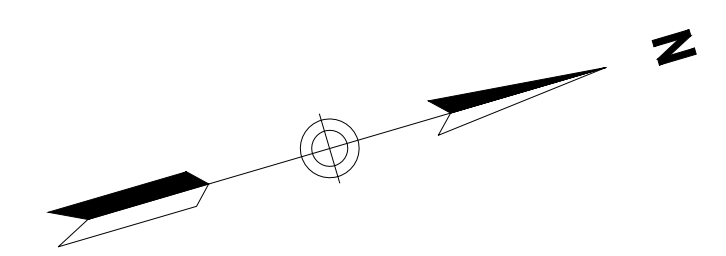


- OPERATIONAL NOTES:**
- RRFB SHALL WIG-WAG FLASH WHEN ACTIVATED BY PEDESTRIAN PUSHBUTTON.
 - DURATION OF RRFB UPON RECEIPT OF VALID PEDESTRIAN PUSHBUTTON ACTUATION SHALL BE INITIALLY SET FOR 15 SECONDS.
 - THE SYSTEM SHALL BE CAPABLE OF PROVIDING A FLASHING RATE OF 70 TO 80 CYCLES PER MINUTE.
 - SEE SPECIAL PROVISIONS ITEM 824.401 FOR MORE DETAILS.

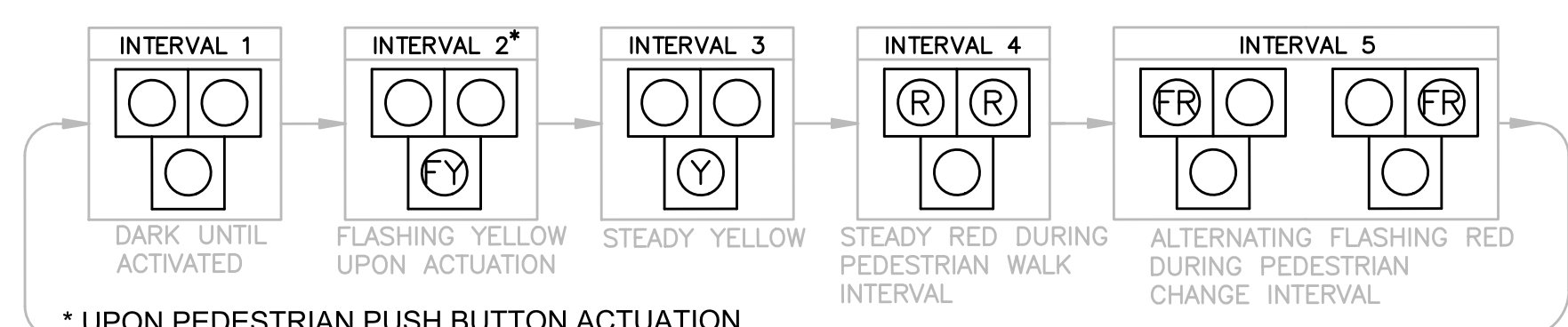
FRONT VIEW (FACING ON-COMING TRAFFIC)

RECTANGULAR RAPID FLASHING BEACON (RRFB) - POST MOUNTED

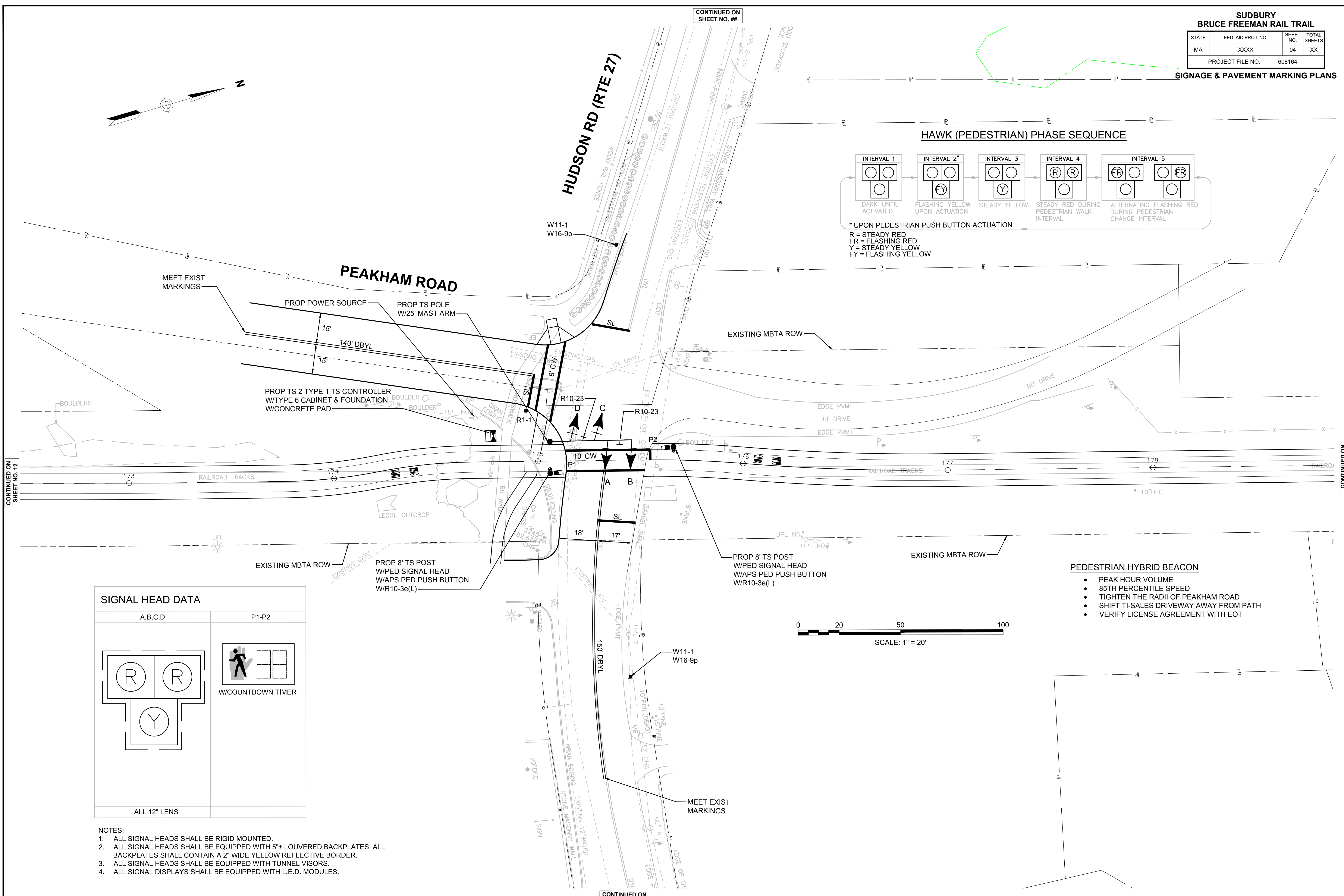
SCALE: N.T.S.



HAWK (PEDESTRIAN) PHASE SEQUENCE



* UPON PEDESTRIAN PUSH BUTTON ACTUATION
 R = STEADY RED
 FR = FLASHING RED
 Y = STEADY YELLOW
 FY = FLASHING YELLOW

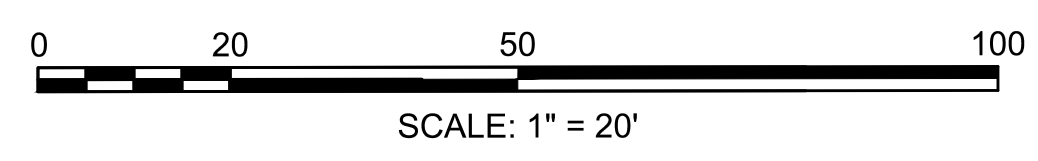


SIGNAL HEAD DATA

A,B,C,D	P1-P2
	<p style="text-align: center;">W/COUNTDOWN TIMER</p>
ALL 12" LENS	

- NOTES:**
- ALL SIGNAL HEADS SHALL BE RIGID MOUNTED.
 - ALL SIGNAL HEADS SHALL BE EQUIPPED WITH 5"± LOUVERED BACKPLATES. ALL BACKPLATES SHALL CONTAIN A 2" WIDE YELLOW REFLECTIVE BORDER.
 - ALL SIGNAL HEADS SHALL BE EQUIPPED WITH TUNNEL VISORS.
 - ALL SIGNAL DISPLAYS SHALL BE EQUIPPED WITH L.E.D. MODULES.

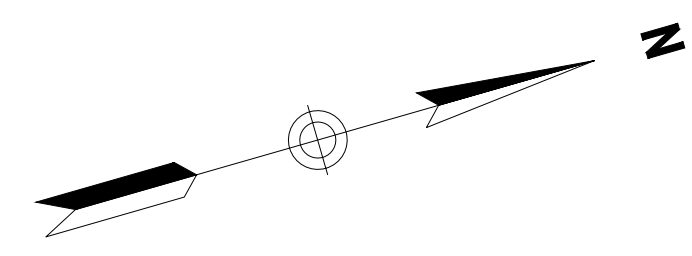
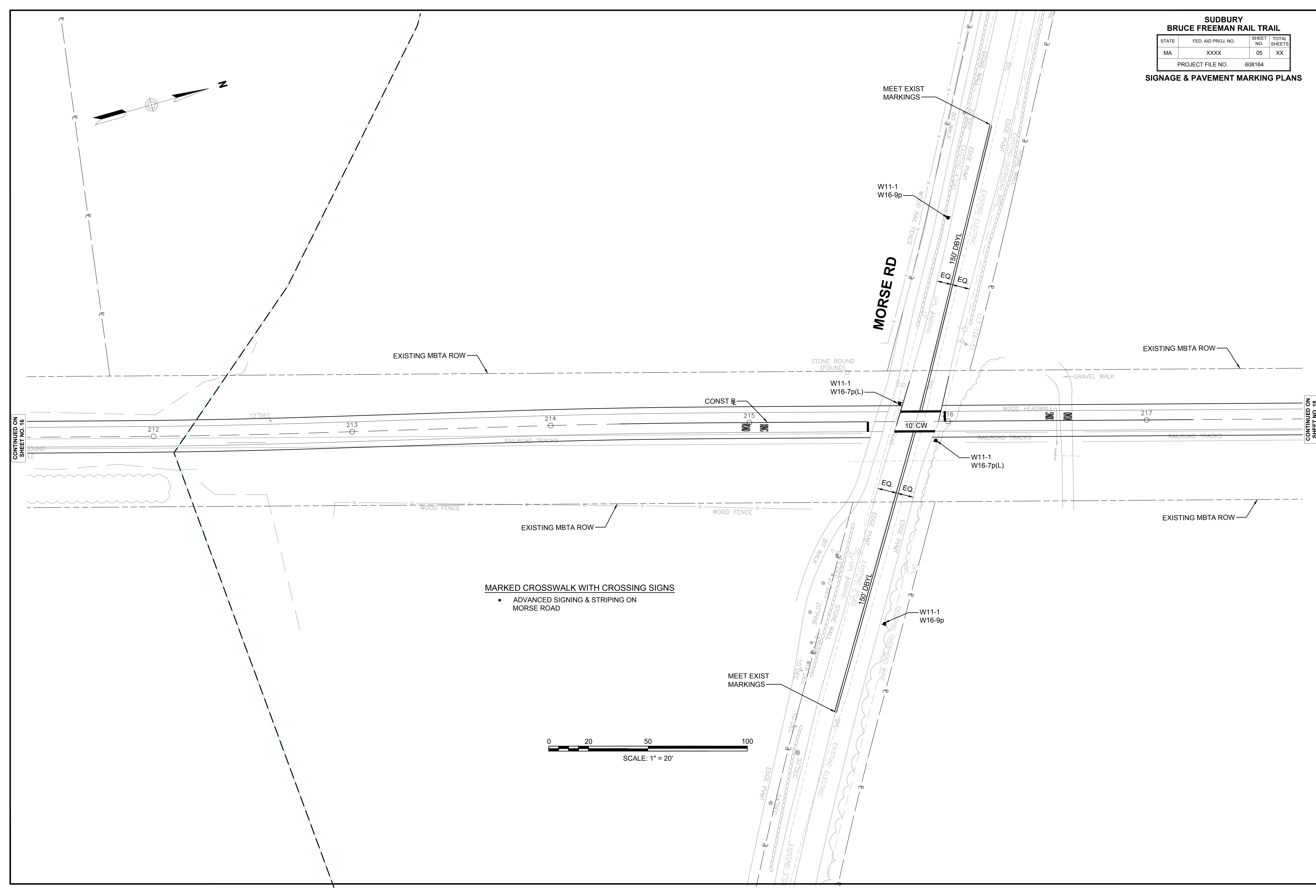
- PEDESTRIAN HYBRID BEACON**
- PEAK HOUR VOLUME
 - 85TH PERCENTILE SPEED
 - TIGHTEN THE RADII OF PEAKHAM ROAD
 - SHIFT TI-SALES DRIVEWAY AWAY FROM PATH
 - VERIFY LICENSE AGREEMENT WITH EOT



CONTINUED ON SHEET NO. 12

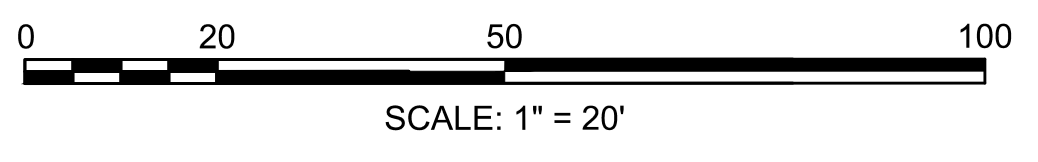
CONTINUED ON SHEET NO. 14

CONTINUED ON SHEET NO. ##



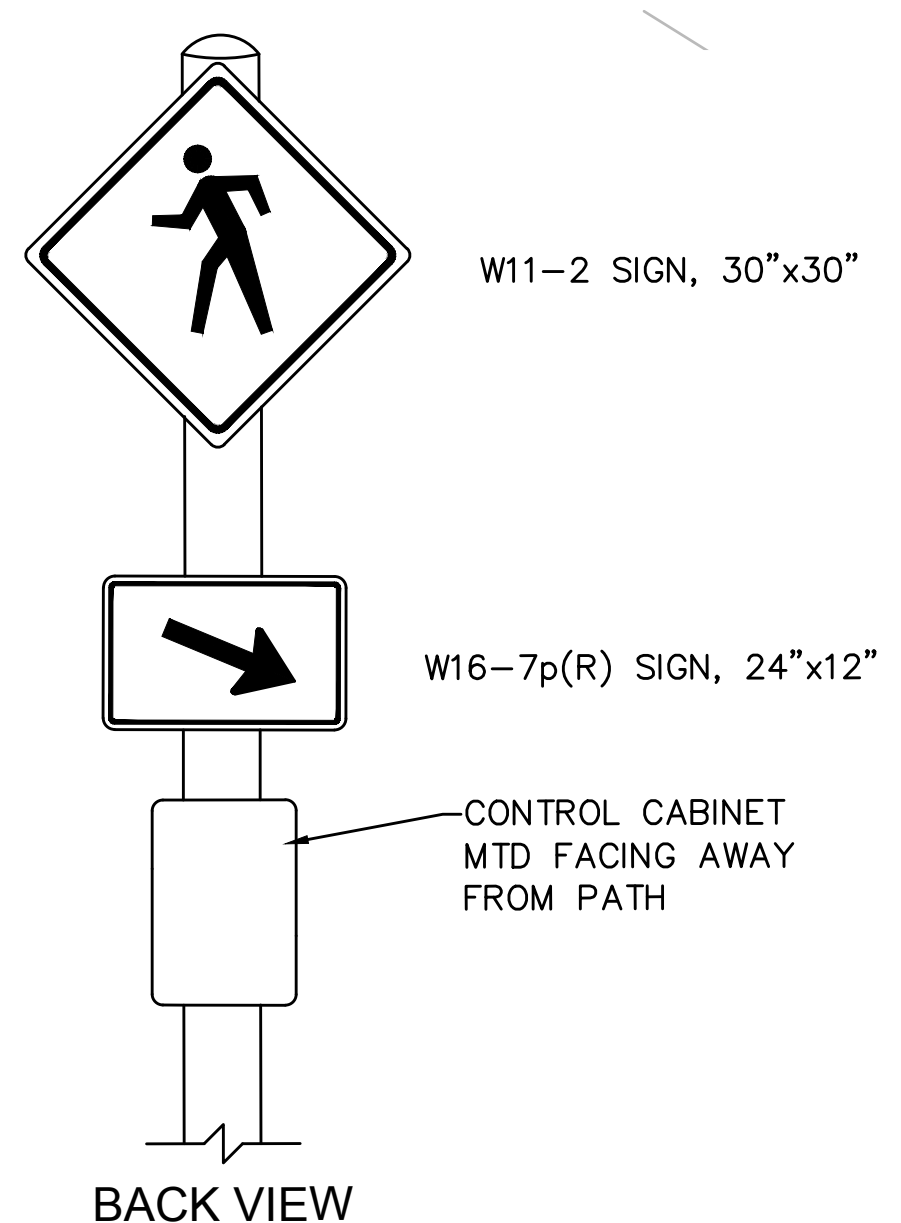
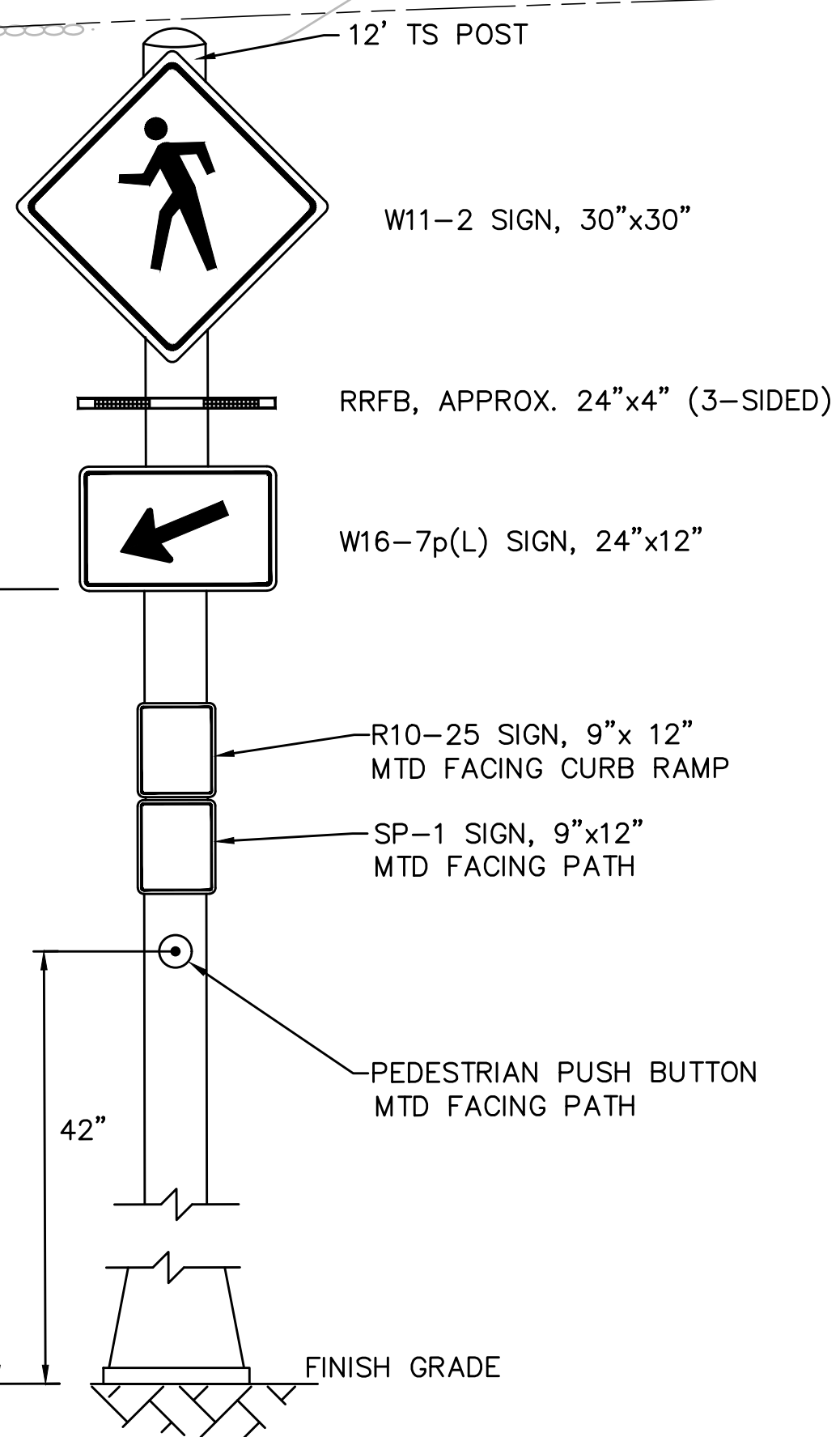
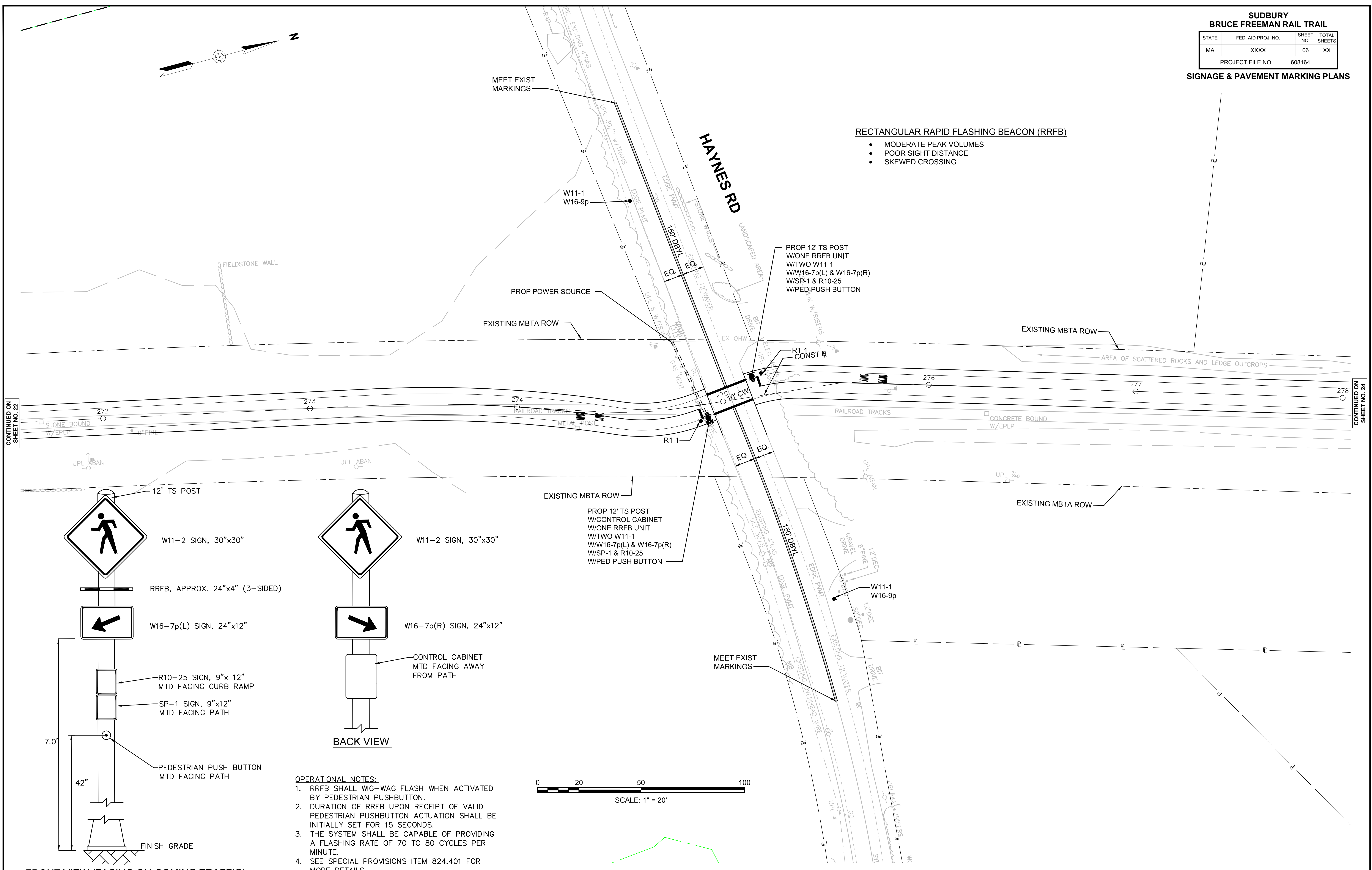
MARKED CROSSWALK WITH CROSSING SIGNS

- ADVANCED SIGNING & STRIPING ON MORSE ROAD

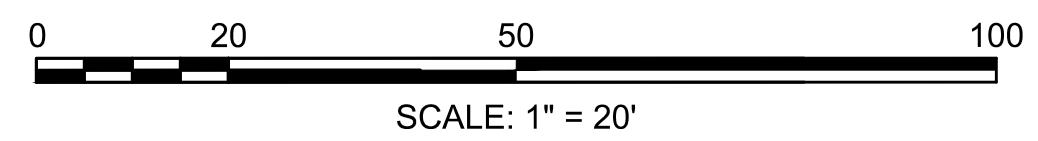


RECTANGULAR RAPID FLASHING BEACON (RRFB)

- MODERATE PEAK VOLUMES
- POOR SIGHT DISTANCE
- SKEWED CROSSING



- OPERATIONAL NOTES:**
1. RRFB SHALL WIG-WAG FLASH WHEN ACTIVATED BY PEDESTRIAN PUSHBUTTON.
 2. DURATION OF RRFB UPON RECEIPT OF VALID PEDESTRIAN PUSHBUTTON ACTUATION SHALL BE INITIALLY SET FOR 15 SECONDS.
 3. THE SYSTEM SHALL BE CAPABLE OF PROVIDING A FLASHING RATE OF 70 TO 80 CYCLES PER MINUTE.
 4. SEE SPECIAL PROVISIONS ITEM 824.401 FOR MORE DETAILS.



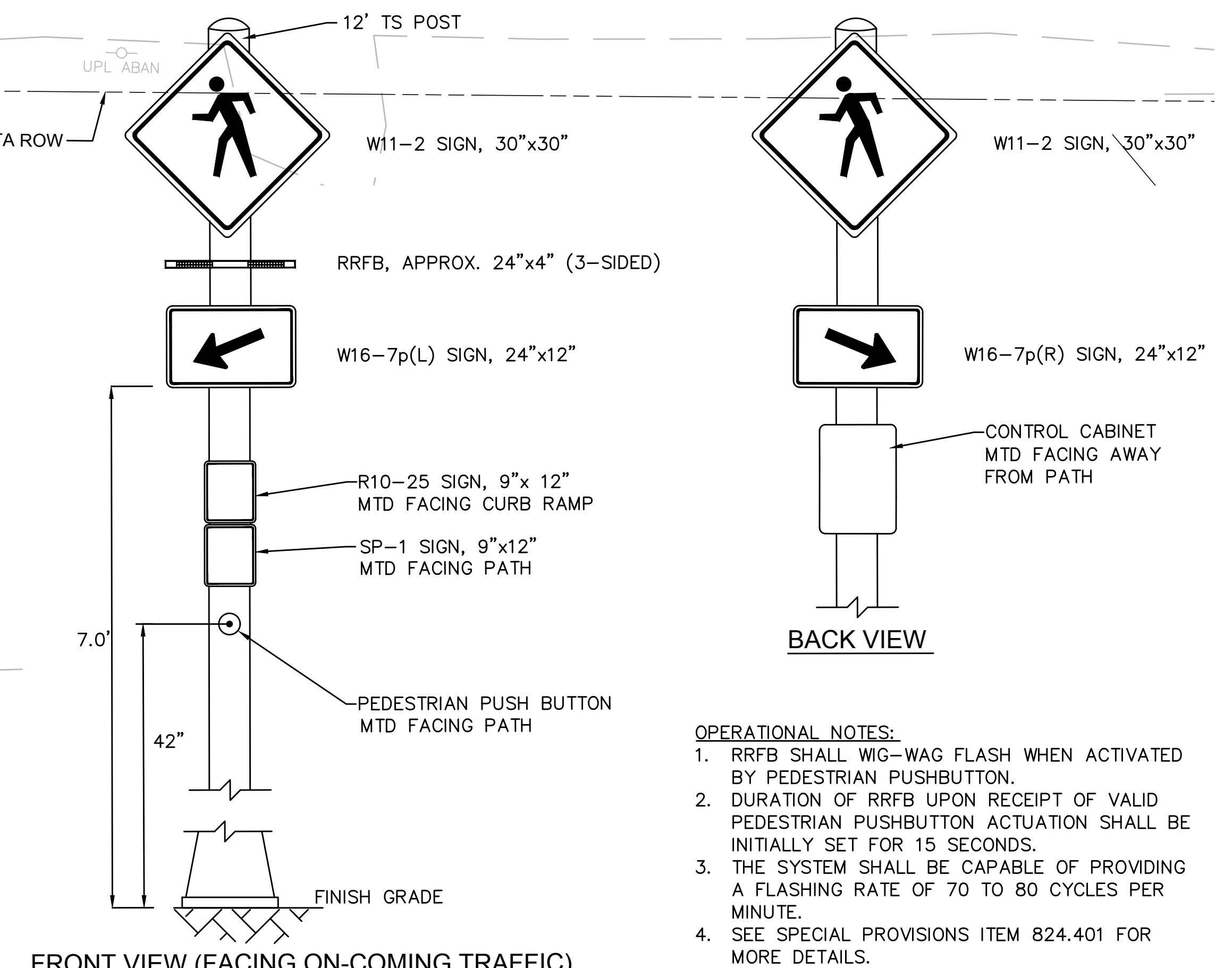
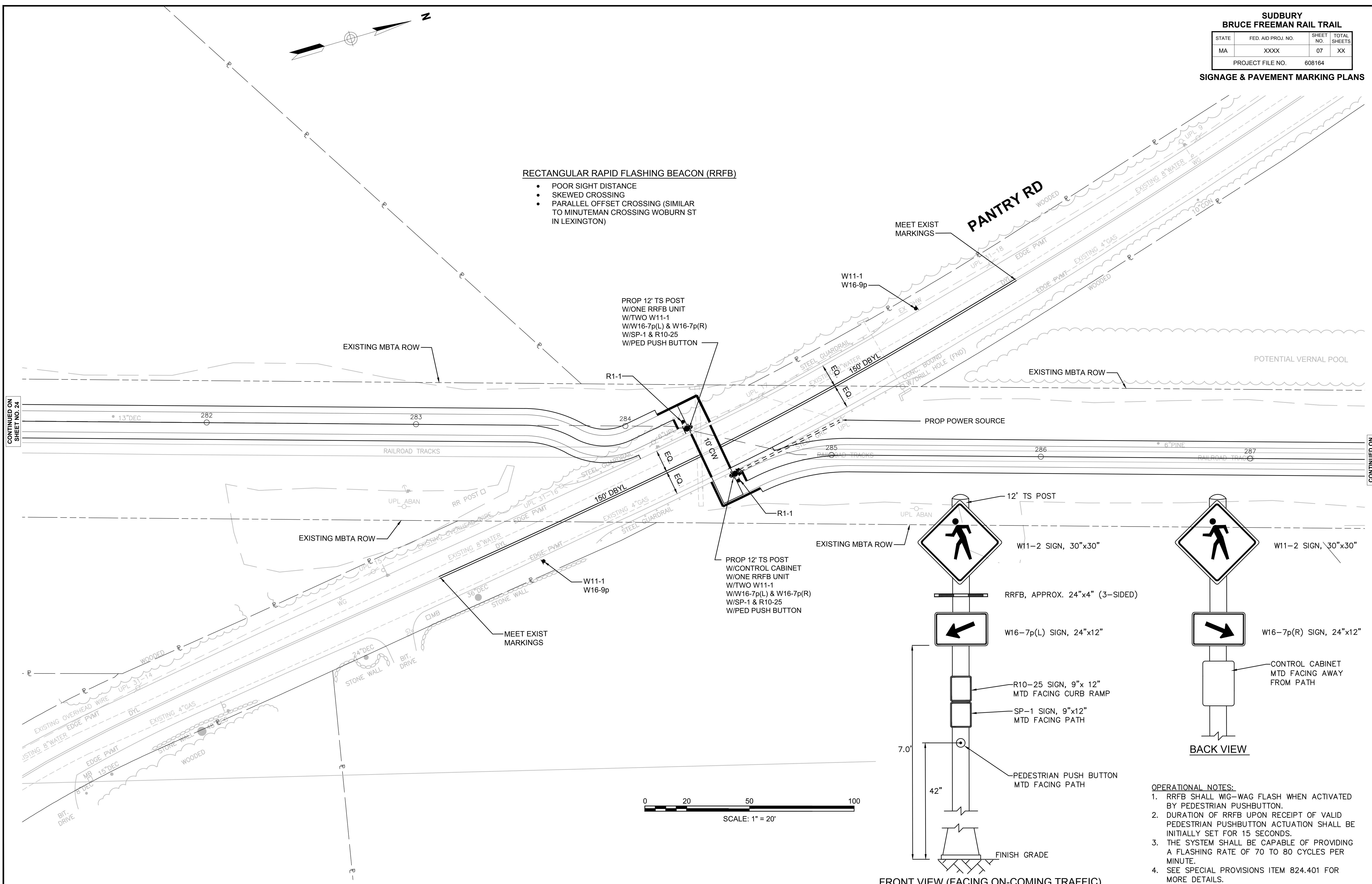
FRONT VIEW (FACING ON-COMING TRAFFIC)
RECTANGULAR RAPID FLASHING BEACON (RRFB) - POST MOUNTED
SCALE: N.T.S.

CONTINUED ON SHEET NO. 22

CONTINUED ON SHEET NO. 24

RECTANGULAR RAPID FLASHING BEACON (RRFB)

- POOR SIGHT DISTANCE
- SKEWED CROSSING
- PARALLEL OFFSET CROSSING (SIMILAR TO MINUTEMAN CROSSING WOBURN ST IN LEXINGTON)

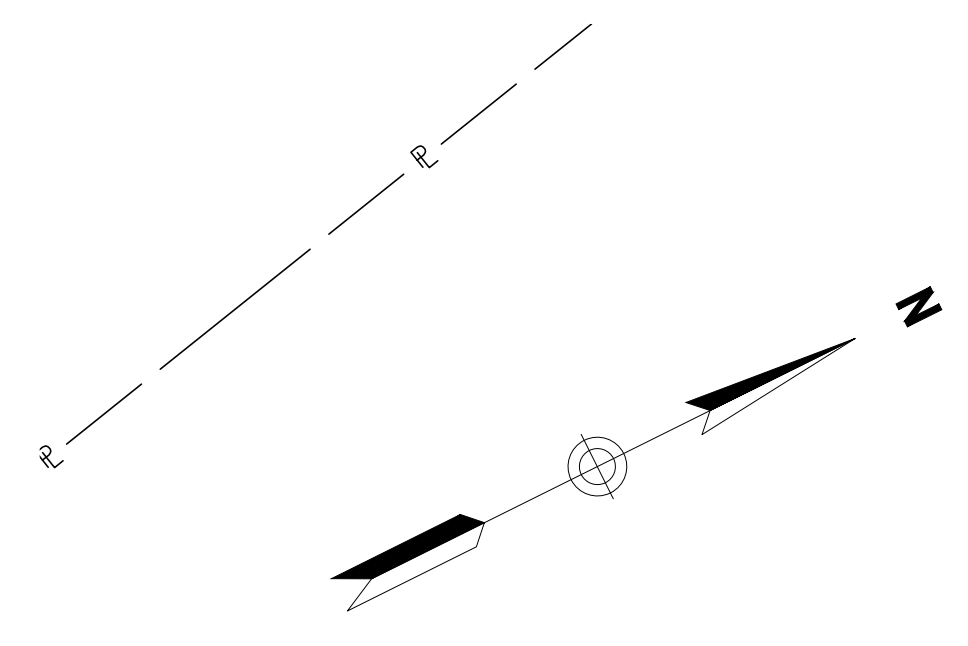


- OPERATIONAL NOTES:**
1. RRFB SHALL WIG-WAG FLASH WHEN ACTIVATED BY PEDESTRIAN PUSHBUTTON.
 2. DURATION OF RRFB UPON RECEIPT OF VALID PEDESTRIAN PUSHBUTTON ACTUATION SHALL BE INITIALLY SET FOR 15 SECONDS.
 3. THE SYSTEM SHALL BE CAPABLE OF PROVIDING A FLASHING RATE OF 70 TO 80 CYCLES PER MINUTE.
 4. SEE SPECIAL PROVISIONS ITEM 824.401 FOR MORE DETAILS.

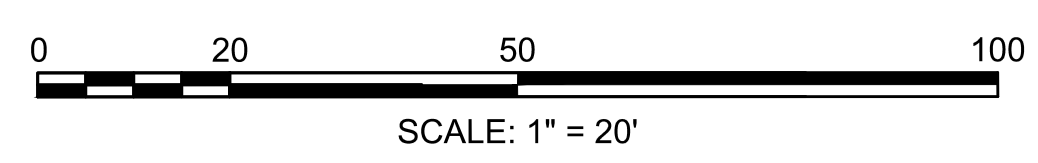
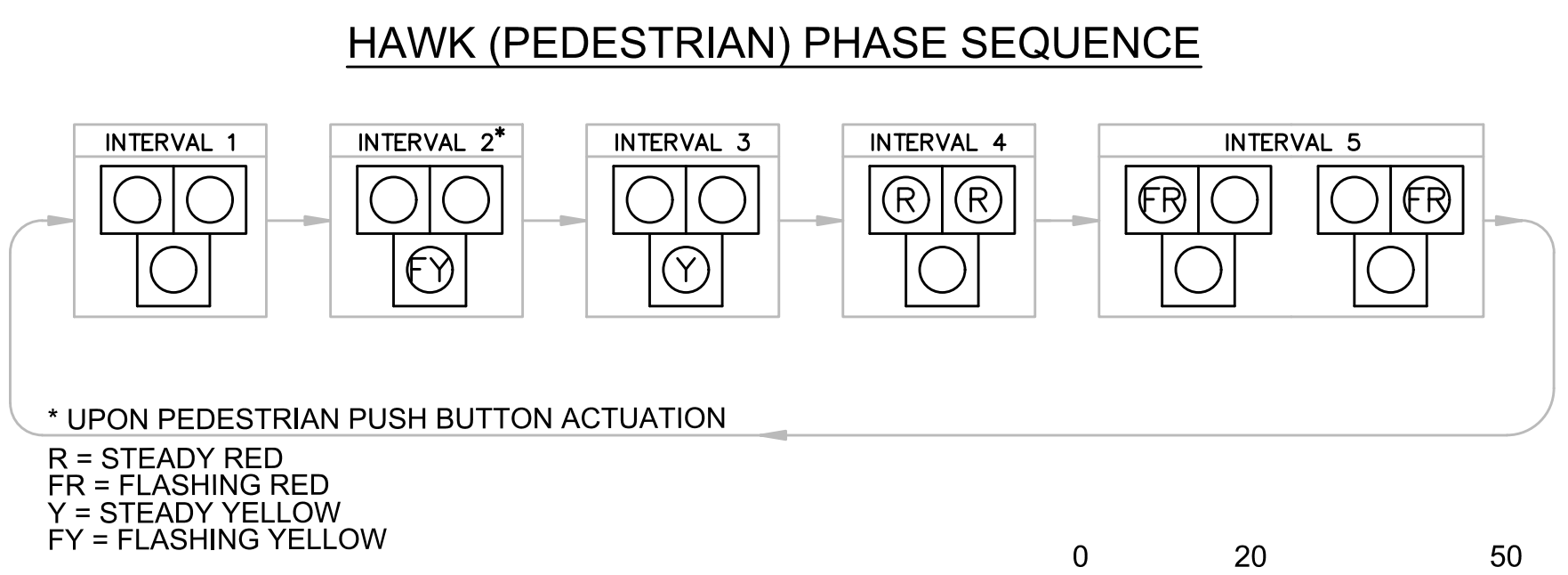
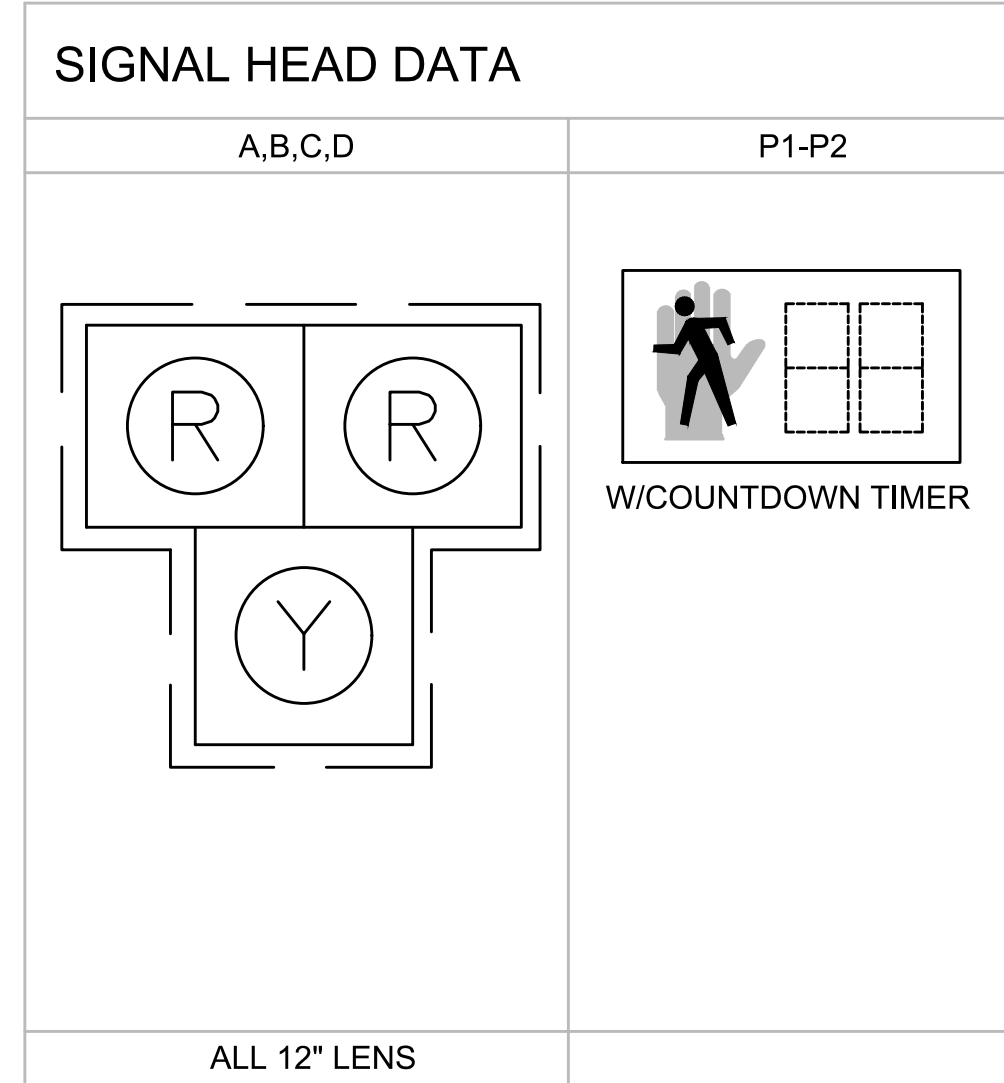
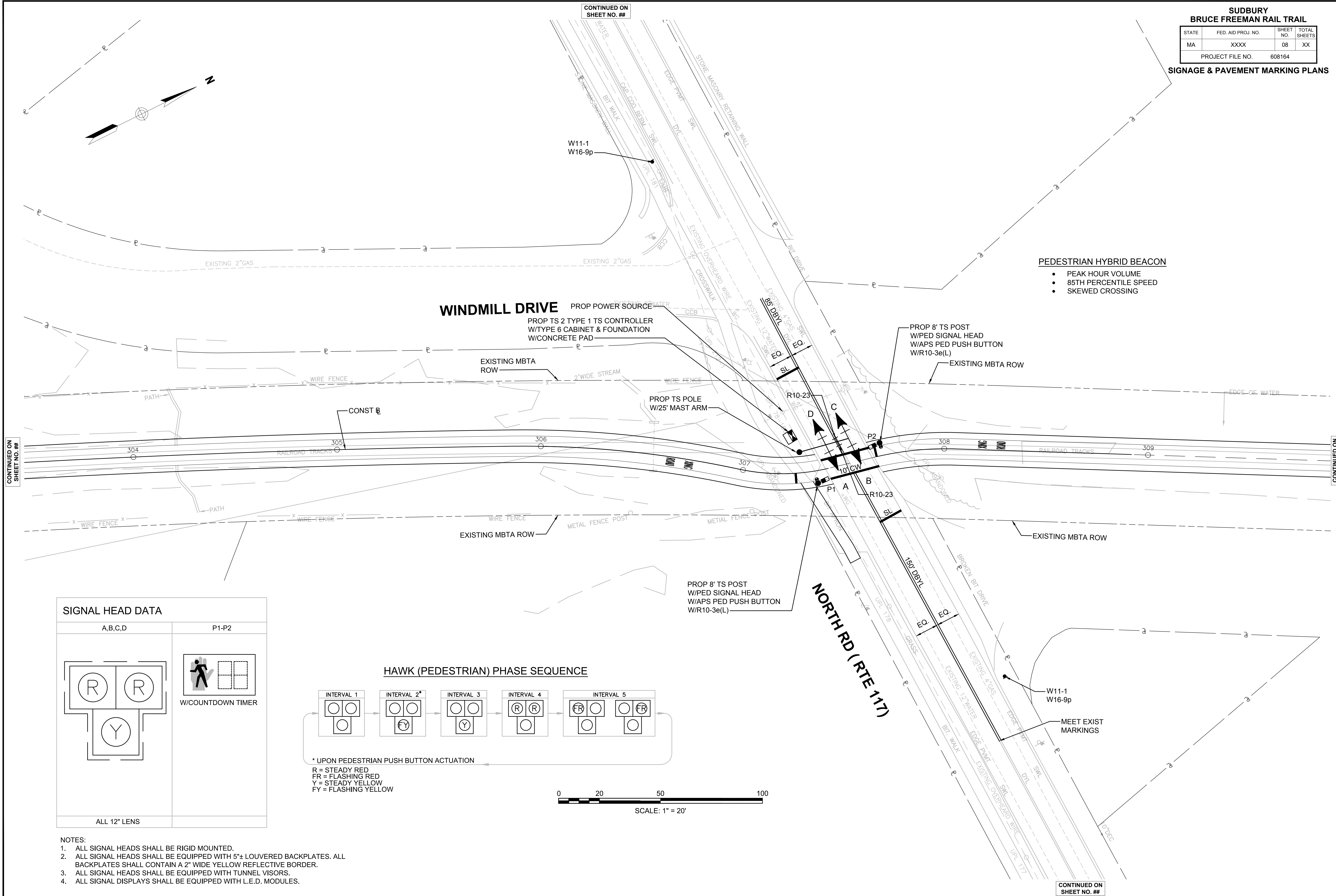
RECTANGULAR RAPID FLASHING BEACON (RRFB) - POST MOUNTED
SCALE: N.T.S.

CONTINUED ON SHEET NO. 24

CONTINUED ON SHEET NO. 26



- PEDESTRIAN HYBRID BEACON**
- PEAK HOUR VOLUME
 - 85TH PERCENTILE SPEED
 - SKEWED CROSSING



- NOTES:**
1. ALL SIGNAL HEADS SHALL BE RIGID MOUNTED.
 2. ALL SIGNAL HEADS SHALL BE EQUIPPED WITH 5"± LOUVERED BACKPLATES. ALL BACKPLATES SHALL CONTAIN A 2" WIDE YELLOW REFLECTIVE BORDER.
 3. ALL SIGNAL HEADS SHALL BE EQUIPPED WITH TUNNEL VISORS.
 4. ALL SIGNAL DISPLAYS SHALL BE EQUIPPED WITH L.E.D. MODULES.

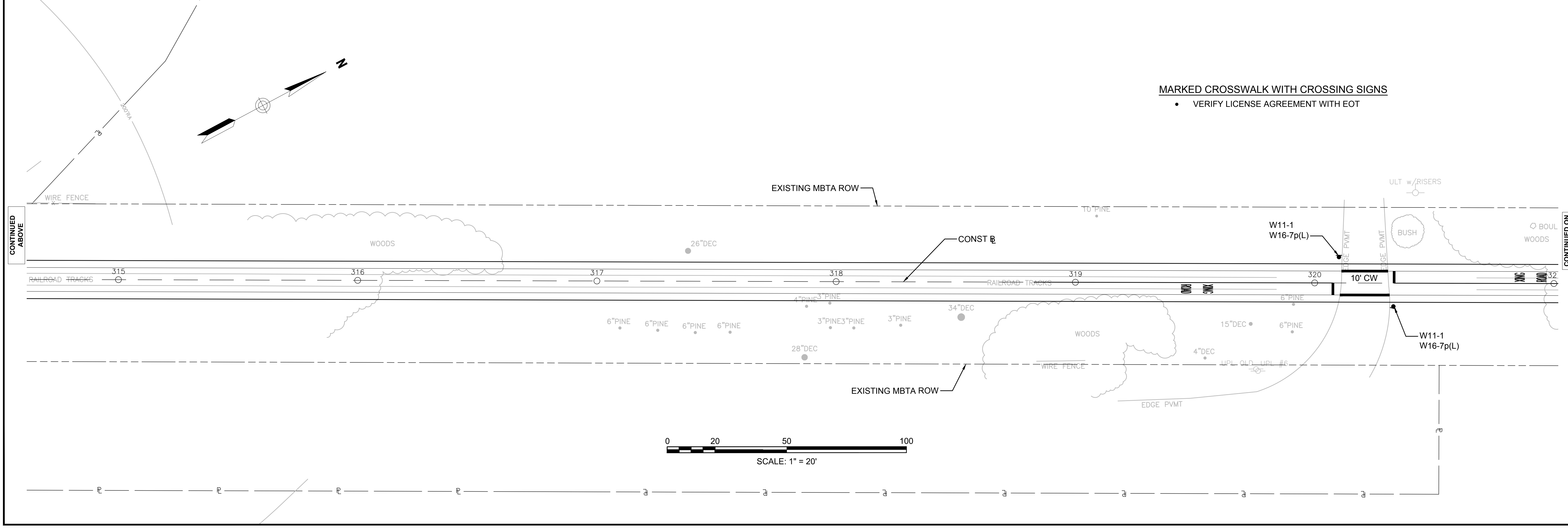
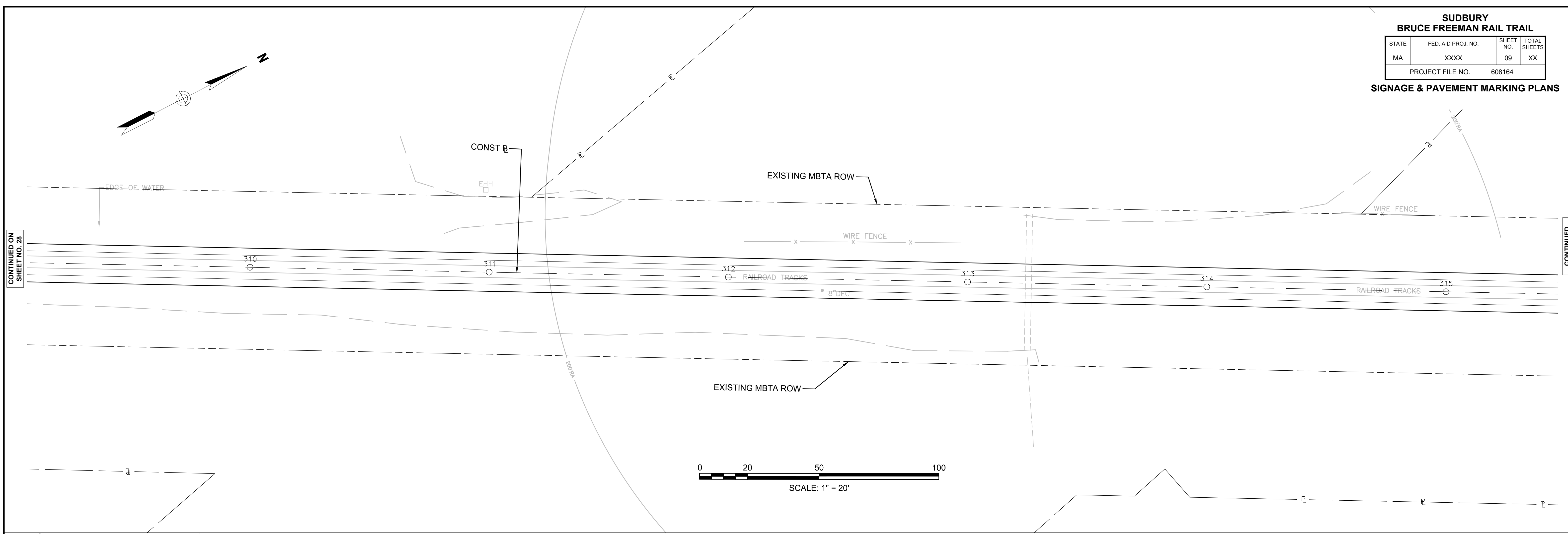
CONTINUED ON SHEET NO. ##

CONTINUED ON SHEET NO. 29

CONTINUED ON SHEET NO. ##

CONTINUED ON SHEET NO. 28

CONTINUED BELOW



MARKED CROSSWALK WITH CROSSING SIGNS
 • VERIFY LICENSE AGREEMENT WITH EOT

CONTINUED ABOVE

CONTINUED ON SHEET NO. 30