

- Limit of Grading
- MBTA ROW Boundary
- - - Area of Potential Effect: Central Massachusetts Railroad Corridor Historic District
- In-Road Transmission Route
- 16-ft Permit Area Buffer
- ▨ Permit Areas
- Wetland Impact
- Bank and Fill in Waterway
- Delineated Wetland Edge
- ⋯ Approximate Wetland Edge
- Delineated Top of Bank
- Delineated Vernal Pool Edge
- ▨ Vernal Pool Area
- Wetland Area
- Land Under Water
- Wetland Replication Area
- ▨ Bordering Land Subject to Flooding
- ▨ Drainage Ditch (1995)
- ▨ Town Boundaries

EVERSOURCE
ENERGY

Sudbury-Hudson Transmission Reliability Project

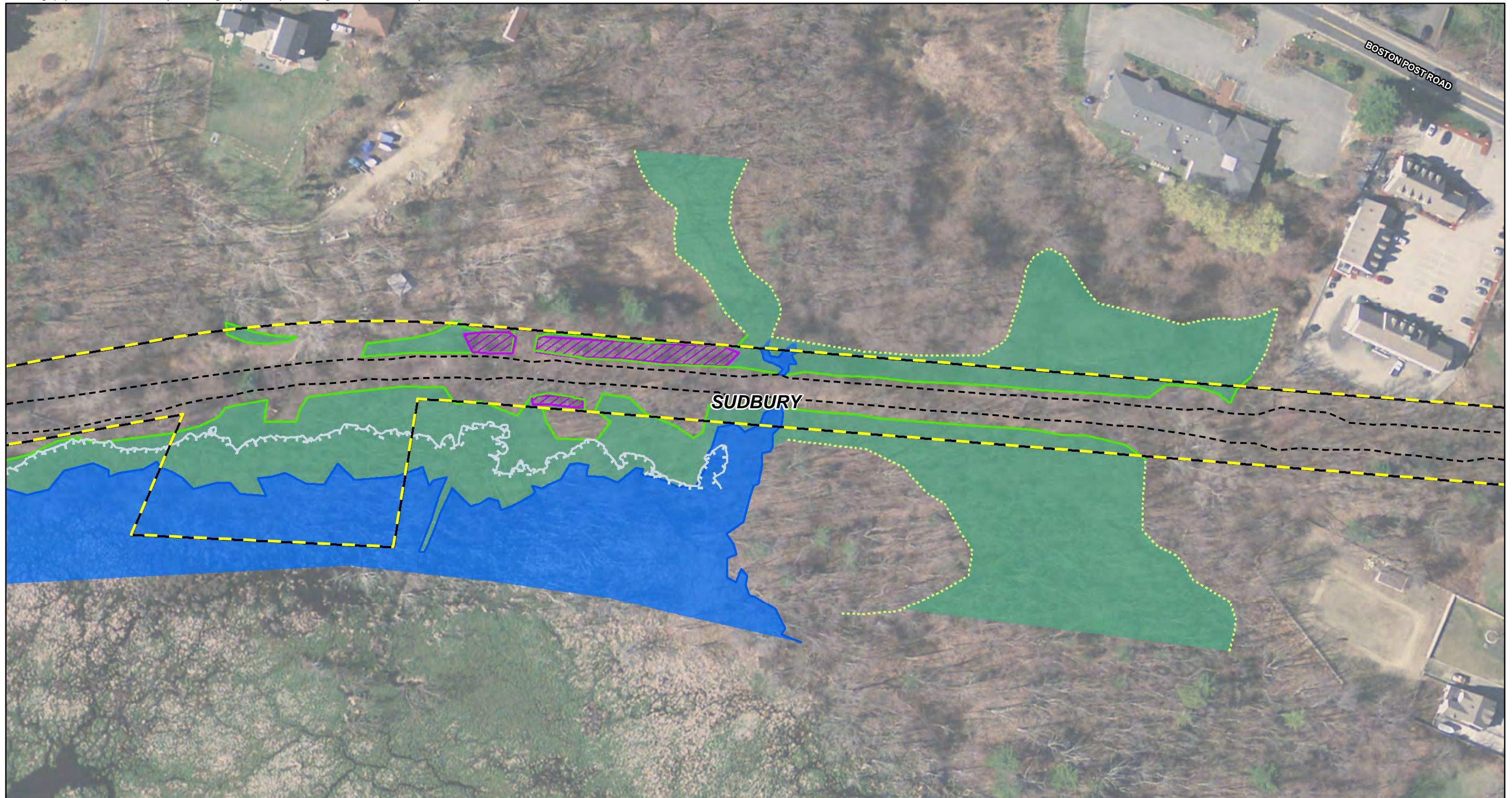
Figure 1
USACE Permit Area Plans

Source:
MassGIS, 2015
Orthomagery, VHB
11/18/2021

0 100 200 Feet

N ↑





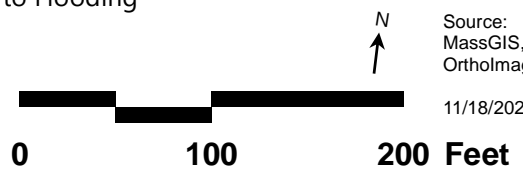
- Limit of Grading
- MBTA ROW Boundary
- - - Area of Potential Effect: Central Massachusetts
- Railroad Corridor Historic District
- In-Road Transmission Route
- 16-ft Permit Area Buffer
- Permit Areas
- Wetland Impact
- Bank and Fill in Waterway
- Delineated Wetland Edge
- Approximate Wetland Edge
- Delineated Top of Bank
- Delineated Vernal Pool Edge
- Perennial Stream
- Vernal Pool Area
- Wetland Area
- Land Under Water
- Wetland Replication Area
- Bordering Land Subject to Flooding
- Drainage Ditch (1995)
- Town Boundaries

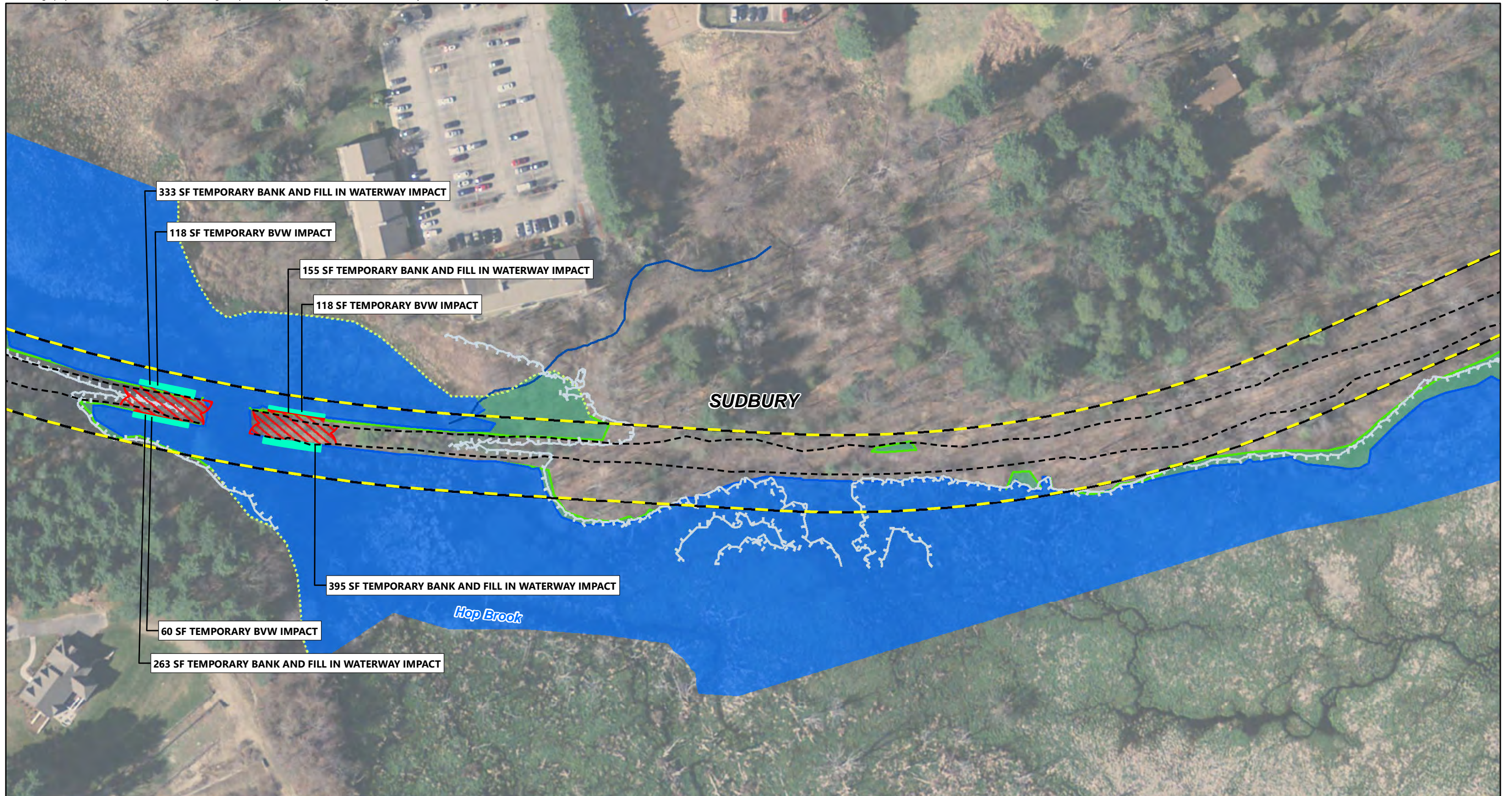


Sudbury-Hudson Transmission Reliability Project

**Figure 1
USACE Permit Area Plans**

Source:
MassGIS, 2015
Orthomagery, VHB
11/18/2021





- Limit of Grading
- MBTA ROW Boundary
- Area of Potential Effect: Central Massachusetts
- Railroad Corridor Historic District
- In-Road Transmission Route
- 16-ft Permit Area Buffer
- ▨ Permit Areas
- ▨ Wetland Impact
- ▨ Bank and Fill in Waterway
- Delineated Wetland Edge
- ⋯ Approximate Wetland Edge
- Delineated Top of Bank
- Delineated Vernal Pool Edge
- Perennial Stream
- ▨ Vernal Pool Area
- ▨ Wetland Area
- ▨ Land Under Water
- ▨ Wetland Replication Area
- ▨ Bordering Land Subject to Flooding
- ▨ Drainage Ditch (1995)
- ▨ Town Boundaries

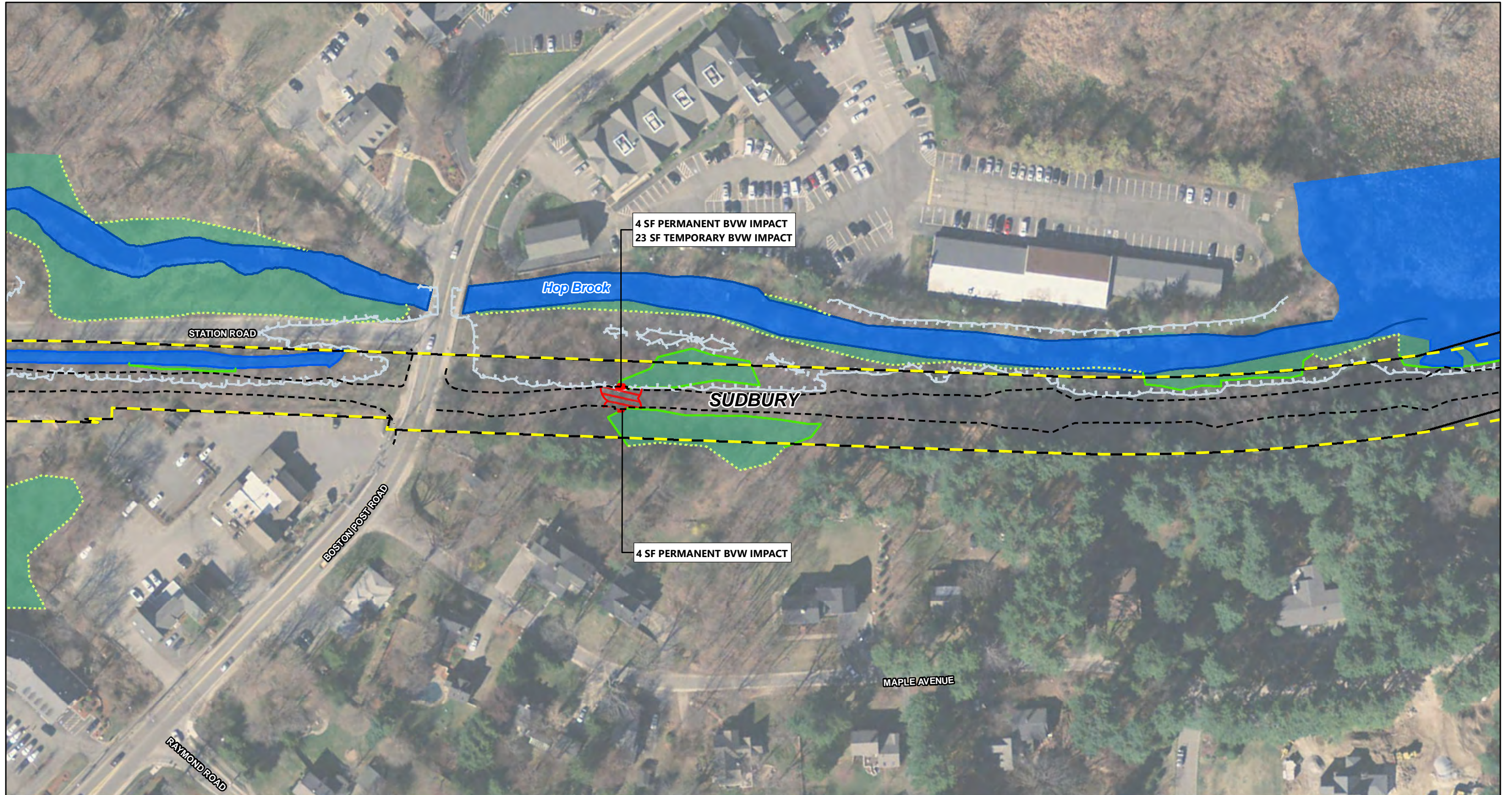


Sudbury-Hudson Transmission Reliability Project

**Figure 1
USACE Permit Area Plans**

Source:
MassGIS, 2015
Orthomagery, VHB
11/18/2021





- Limit of Grading
- MBTA ROW Boundary
- - - Area of Potential Effect: Central Massachusetts
- Railroad Corridor Historic District
- In-Road Transmission Route
- 16-ft Permit Area Buffer
- ▨ Permit Areas
- ▨ Wetland Impact
- ▨ Bank and Fill in Waterway
- Delineated Wetland Edge
- ⋯ Approximate Wetland Edge
- Delineated Top of Bank
- Delineated Vernal Pool Edge
- Perennial Stream
- ▨ Vernal Pool Area
- ▨ Wetland Area
- ▨ Land Under Water
- ▨ Wetland Replication Area
- ▨ Bordering Land Subject to Flooding
- ▨ Drainage Ditch (1995)
- ▨ Town Boundaries

EVERSOURCE
ENERGY

Sudbury-Hudson Transmission Reliability Project

Figure 1
USACE Permit Area Plans

Source:
MassGIS, 2015
Orthomagery, VHB
11/18/2021





- Limit of Grading
- MBTA ROW Boundary
- - - Area of Potential Effect: Central Massachusetts
- Railroad Corridor Historic District
- In-Road Transmission Route
- 16-ft Permit Area Buffer
- ▨ Permit Areas
- ▨ Wetland Impact
- ▨ Bank and Fill in Waterway
- Delineated Wetland Edge
- - - Approximate Wetland Edge
- Delineated Top of Bank
- Delineated Vernal Pool Edge
- Perennial Stream
- ▨ Vernal Pool Area
- ▨ Wetland Area
- ▨ Land Under Water
- ▨ Wetland Replication Area
- ▨ Bordering Land Subject to Flooding
- ▨ Drainage Ditch (1995)
- ▨ Town Boundaries



Sudbury-Hudson Transmission Reliability Project

**Figure 1
USACE Permit Area Plans**

Source:
MassGIS, 2015
Orthomagery, VHB
11/18/2021





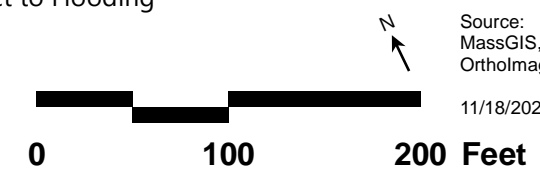
- Limit of Grading
- MBTA ROW Boundary
- - - Area of Potential Effect: Central Massachusetts
- - - Railroad Corridor Historic District
- In-Road Transmission Route
- 16-ft Permit Area Buffer
- ▨ Permit Areas
- ▨ Wetland Impact
- ▨ Bank and Fill in Waterway
- Delineated Wetland Edge
- - - Approximate Wetland Edge
- Delineated Top of Bank
- Delineated Vernal Pool Edge
- ▨ Vernal Pool Area
- ▨ Wetland Area
- ▨ Land Under Water
- ▨ Wetland Replication Area
- ▨ Bordering Land Subject to Flooding
- ▨ Drainage Ditch (1995)
- ▨ Town Boundaries



Sudbury-Hudson Transmission Reliability Project

**Figure 1
USACE Permit Area Plans**

Source:
MassGIS, 2015
Orthomagery, VHB
11/18/2021





- Limit of Grading
- MBTA ROW Boundary
- - - Area of Potential Effect: Central Massachusetts
- Railroad Corridor Historic District
- In-Road Transmission Route
- 16-ft Permit Area Buffer
- ▨ Permit Areas
- ▨ Wetland Impact
- ▨ Bank and Fill in Waterway
- Delineated Wetland Edge
- ⋯ Approximate Wetland Edge
- Delineated Top of Bank
- Delineated Vernal Pool Edge
- Perennial Stream
- ▨ Vernal Pool Area
- ▨ Wetland Area
- ▨ Land Under Water
- ▨ Wetland Replication Area
- ▨ Bordering Land Subject to Flooding
- ▨ Drainage Ditch (1995)
- ▨ Town Boundaries



Sudbury-Hudson Transmission Reliability Project

**Figure 1
USACE Permit Area Plans**

Source:
MassGIS, 2015
Orthomagery, VHB
11/18/2021



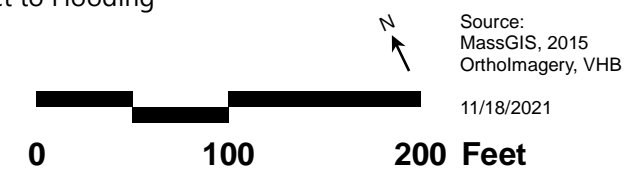


- Limit of Grading
- MBTA ROW Boundary
- - - Area of Potential Effect: Central Massachusetts
- Railroad Corridor Historic District
- In-Road Transmission Route
- 16-ft Permit Area Buffer
- ▨ Permit Areas
- ▨ Wetland Impact
- ▨ Bank and Fill in Waterway
- Delineated Wetland Edge
- ⋯ Approximate Wetland Edge
- Delineated Top of Bank
- Delineated Vernal Pool Edge
- ▨ Perennial Stream
- ▨ Vernal Pool Area
- ▨ Wetland Area
- ▨ Land Under Water
- ▨ Wetland Replication Area
- ▨ Bordering Land Subject to Flooding
- ▨ Drainage Ditch (1995)
- ▨ Town Boundaries



Sudbury-Hudson Transmission Reliability Project

**Figure 1
USACE Permit Area Plans**





- Limit of Grading
- MBTA ROW Boundary
- - - Area of Potential Effect: Central Massachusetts
- Railroad Corridor Historic District
- In-Road Transmission Route
- 16-ft Permit Area Buffer
- ▨ Permit Areas
- ▨ Wetland Impact
- ▨ Bank and Fill in Waterway
- Delineated Wetland Edge
- - - Approximate Wetland Edge
- Delineated Top of Bank
- Delineated Vernal Pool Edge
- Perennial Stream
- ▨ Vernal Pool Area
- ▨ Wetland Area
- ▨ Land Under Water
- ▨ Wetland Replication Area
- ▨ Bordering Land Subject to Flooding
- ▨ Drainage Ditch (1995)
- ▨ Town Boundaries



Sudbury-Hudson Transmission Reliability Project

**Figure 1
USACE Permit Area Plans**

Source:
MassGIS, 2015
Orthomagery, VHB
11/18/2021





- Limit of Grading
- MBTA ROW Boundary
- - - Area of Potential Effect: Central Massachusetts
- Railroad Corridor Historic District
- In-Road Transmission Route
- 16-ft Permit Area Buffer
- ▨ Permit Areas
- ▨ Wetland Impact
- ▨ Bank and Fill in Waterway
- Delineated Wetland Edge
- ⋯ Approximate Wetland Edge
- Delineated Top of Bank
- Delineated Vernal Pool Edge
- ▨ Vernal Pool Area
- ▨ Wetland Area
- ▨ Land Under Water
- ▨ Wetland Replication Area
- ▨ Bordering Land Subject to Flooding
- ▨ Drainage Ditch (1995)
- ▨ Town Boundaries



Sudbury-Hudson Transmission Reliability Project

**Figure 1
USACE Permit Area Plans**

Source:
MassGIS, 2015
Orthomagery, VHB
11/18/2021





- Limit of Grading
- MBTA ROW Boundary
- Area of Potential Effect: Central Massachusetts
- Railroad Corridor Historic District
- In-Road Transmission Route
- 16-ft Permit Area Buffer
- Permit Areas
- Wetland Impact
- Bank and Fill in Waterway
- Delineated Wetland Edge
- Approximate Wetland Edge
- Delineated Top of Bank
- Delineated Vernal Pool Edge
- Perennial Stream
- Vernal Pool Area
- Wetland Area
- Land Under Water
- Wetland Replication Area
- Bordering Land Subject to Flooding
- Drainage Ditch (1995)
- Town Boundaries

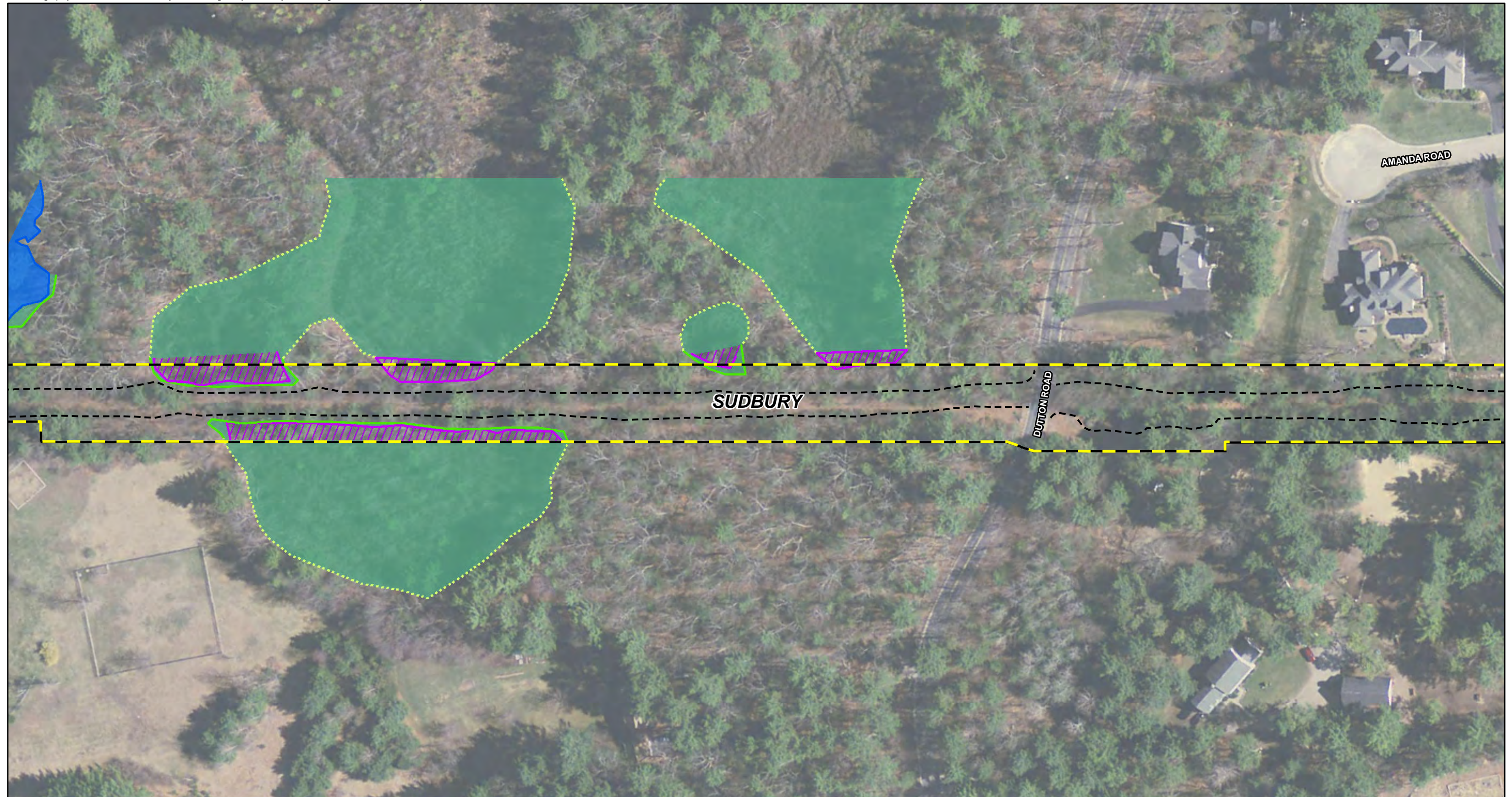


Sudbury-Hudson Transmission Reliability Project

**Figure 1
USACE Permit Area Plans**

Source:
MassGIS, 2015
Orthomagery, VHB
11/18/2021





- Limit of Grading
- MBTA ROW Boundary
- - - Area of Potential Effect: Central Massachusetts Railroad Corridor Historic District
- In-Road Transmission Route
- 16-ft Permit Area Buffer
- ▨ Permit Areas
- Wetland Impact
- Bank and Fill in Waterway
- Delineated Wetland Edge
- ⋯ Approximate Wetland Edge
- Delineated Top of Bank
- Delineated Vernal Pool Edge
- Perennial Stream
- ▨ Vernal Pool Area
- Wetland Area
- Land Under Water
- Wetland Replication Area
- ▨ Bordering Land Subject to Flooding
- ▨ Drainage Ditch (1995)
- ▨ Town Boundaries



Sudbury-Hudson Transmission Reliability Project

**Figure 1
USACE Permit Area Plans**

Source:
MassGIS, 2015
Orthomagery, VHB
11/18/2021





- Limit of Grading
- MBTA ROW Boundary
- - - Area of Potential Effect: Central Massachusetts Railroad Corridor Historic District
- In-Road Transmission Route
- 16-ft Permit Area Buffer
- ▨ Permit Areas
- Wetland Impact
- Bank and Fill in Waterway
- Delineated Wetland Edge
- ⋯ Approximate Wetland Edge
- Delineated Top of Bank
- Delineated Vernal Pool Edge
- ▨ Vernal Pool Area
- Wetland Area
- Land Under Water
- Wetland Replication Area
- ▨ Bordering Land Subject to Flooding
- ▨ Drainage Ditch (1995)
- ▨ Town Boundaries



Sudbury-Hudson Transmission Reliability Project

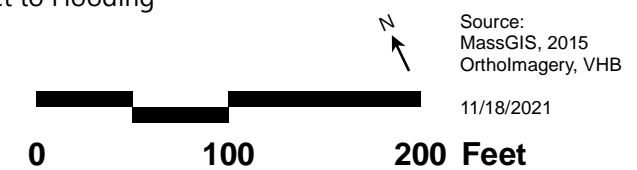
**Figure 1
USACE Permit Area Plans**

Source:
MassGIS, 2015
Orthomagery, VHB
11/18/2021





- Limit of Grading
- MBTA ROW Boundary
- Area of Potential Effect: Central Massachusetts
- Railroad Corridor Historic District
- In-Road Transmission Route
- 16-ft Permit Area Buffer
- Permit Areas
- Wetland Impact
- Bank and Fill in Waterway
- Delineated Wetland Edge
- Approximate Wetland Edge
- Delineated Top of Bank
- Delineated Vernal Pool Edge
- Perennial Stream
- Vernal Pool Area
- Wetland Area
- Land Under Water
- Wetland Replication Area
- Bordering Land Subject to Flooding
- Drainage Ditch (1995)
- Town Boundaries





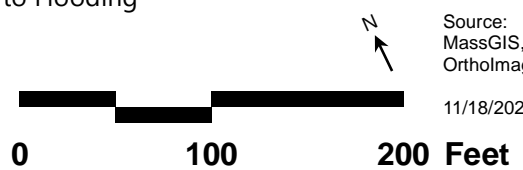
- Limit of Grading
- MBTA ROW Boundary
- Area of Potential Effect: Central Massachusetts
- Railroad Corridor Historic District
- In-Road Transmission Route
- 16-ft Permit Area Buffer
- Permit Areas
- Wetland Impact
- Bank and Fill in Waterway
- Delineated Wetland Edge
- Approximate Wetland Edge
- Delineated Top of Bank
- Delineated Vernal Pool Edge
- Perennial Stream
- Vernal Pool Area
- Wetland Area
- Land Under Water
- Wetland Replication Area
- Bordering Land Subject to Flooding
- Drainage Ditch (1995)
- Town Boundaries



Sudbury-Hudson Transmission Reliability Project

**Figure 1
USACE Permit Area Plans**

Source:
MassGIS, 2015
Orthomagery, VHB
11/18/2021



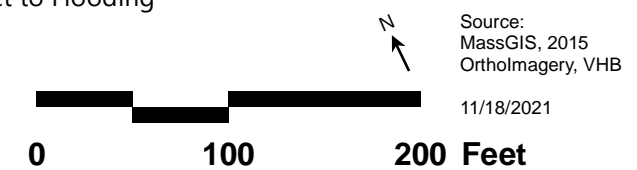


- Limit of Grading
- MBTA ROW Boundary
- Area of Potential Effect: Central Massachusetts Railroad Corridor Historic District
- In-Road Transmission Route
- 16-ft Permit Area Buffer
- Permit Areas
- Wetland Impact
- Bank and Fill in Waterway
- Delineated Wetland Edge
- Approximate Wetland Edge
- Delineated Top of Bank
- Delineated Vernal Pool Edge
- Perennial Stream
- Vernal Pool Area
- Wetland Area
- Land Under Water
- Wetland Replication Area
- Bordering Land Subject to Flooding
- Drainage Ditch (1995)
- Town Boundaries



Sudbury-Hudson Transmission Reliability Project

**Figure 1
USACE Permit Area Plans**





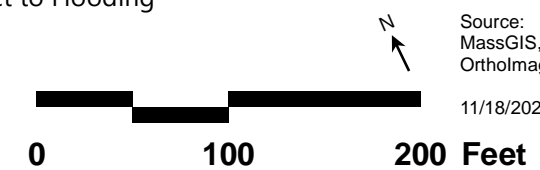
- Limit of Grading
- MBTA ROW Boundary
- - - Area of Potential Effect: Central Massachusetts Railroad Corridor Historic District
- In-Road Transmission Route
- 16-ft Permit Area Buffer
- ▨ Permit Areas
- Wetland Impact
- Bank and Fill in Waterway
- Delineated Wetland Edge
- ⋯ Approximate Wetland Edge
- Delineated Top of Bank
- Delineated Vernal Pool Edge
- Perennial Stream
- ▨ Vernal Pool Area
- Wetland Area
- Land Under Water
- Wetland Replication Area
- ▨ Bordering Land Subject to Flooding
- ▨ Drainage Ditch (1995)
- ▨ Town Boundaries



Sudbury-Hudson Transmission Reliability Project

**Figure 1
USACE Permit Area Plans**

Source:
MassGIS, 2015
Orthomagery, VHB
11/18/2021



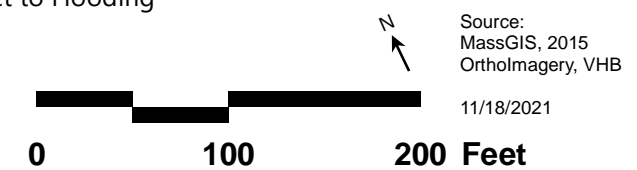


- Limit of Grading
- MBTA ROW Boundary
- - - Area of Potential Effect: Central Massachusetts
- - - Railroad Corridor Historic District
- - - In-Road Transmission Route
- 16-ft Permit Area Buffer
- ▨ Permit Areas
- ▨ Wetland Impact
- ▨ Bank and Fill in Waterway
- Delineated Wetland Edge
- ⋯ Approximate Wetland Edge
- Delineated Top of Bank
- Delineated Vernal Pool Edge
- ▨ Perennial Stream
- ▨ Vernal Pool Area
- ▨ Wetland Area
- ▨ Land Under Water
- ▨ Wetland Replication Area
- ▨ Bordering Land Subject to Flooding
- ▨ Drainage Ditch (1995)
- ▨ Town Boundaries



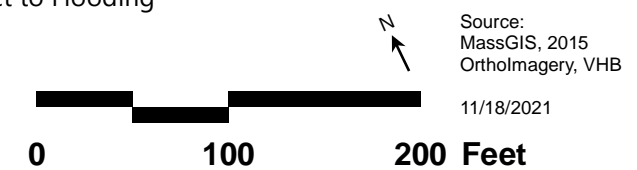
Sudbury-Hudson Transmission Reliability Project

**Figure 1
USACE Permit Area Plans**





- Limit of Grading
- MBTA ROW Boundary
- - - Area of Potential Effect: Central Massachusetts
- - - Railroad Corridor Historic District
- In-Road Transmission Route
- 16-ft Permit Area Buffer
- ▨ Permit Areas
- ▨ Wetland Impact
- ▨ Bank and Fill in Waterway
- Delineated Wetland Edge
- ⋯ Approximate Wetland Edge
- Delineated Top of Bank
- Delineated Vernal Pool Edge
- ▨ Vernal Pool Area
- ▨ Wetland Area
- ▨ Land Under Water
- ▨ Wetland Replication Area
- ▨ Bordering Land Subject to Flooding
- ▨ Drainage Ditch (1995)
- ▨ Town Boundaries





- Limit of Grading
- MBTA ROW Boundary
- - - Area of Potential Effect: Central Massachusetts Railroad Corridor Historic District
- In-Road Transmission Route
- 16-ft Permit Area Buffer
- ▨ Permit Areas
- Wetland Impact
- Bank and Fill in Waterway
- Delineated Wetland Edge
- ⋯ Approximate Wetland Edge
- Delineated Top of Bank
- Delineated Vernal Pool Edge
- Perennial Stream
- ▨ Vernal Pool Area
- Wetland Area
- Land Under Water
- Wetland Replication Area
- ▨ Bordering Land Subject to Flooding
- ▨ Drainage Ditch (1995)
- ▨ Town Boundaries



Sudbury-Hudson Transmission Reliability Project

**Figure 1
USACE Permit Area Plans**

Source:
MassGIS, 2015
Orthomagery, VHB
11/18/2021





- Limit of Grading
- MBTA ROW Boundary
- - - Area of Potential Effect: Central Massachusetts
- - - Railroad Corridor Historic District
- In-Road Transmission Route
- 16-ft Permit Area Buffer
- ▨ Permit Areas
- ▨ Wetland Impact
- ▨ Bank and Fill in Waterway
- Delineated Wetland Edge
- ⋯ Approximate Wetland Edge
- Delineated Top of Bank
- Delineated Vernal Pool Edge
- Perennial Stream
- ▨ Vernal Pool Area
- ▨ Wetland Area
- ▨ Land Under Water
- ▨ Wetland Replication Area
- ▨ Bordering Land Subject to Flooding
- ▨ Drainage Ditch (1995)
- ▨ Town Boundaries



Sudbury-Hudson Transmission Reliability Project

**Figure 1
USACE Permit Area Plans**

Source:
MassGIS, 2015
Orthomagery, VHB
11/18/2021





- Limit of Grading
- MBTA ROW Boundary
- - - Area of Potential Effect: Central Massachusetts Railroad Corridor Historic District
- In-Road Transmission Route
- 16-ft Permit Area Buffer
- ▨ Permit Areas
- Wetland Impact
- Bank and Fill in Waterway
- Delineated Wetland Edge
- ⋯ Approximate Wetland Edge
- Delineated Top of Bank
- Delineated Vernal Pool Edge
- Perennial Stream
- ▨ Vernal Pool Area
- Wetland Area
- Land Under Water
- Wetland Replication Area
- ▨ Bordering Land Subject to Flooding
- ▨ Drainage Ditch (1995)
- ▨ Town Boundaries



Sudbury-Hudson Transmission Reliability Project

**Figure 1
USACE Permit Area Plans**

Source:
MassGIS, 2015
Orthomagery, VHB

11/18/2021





- Limit of Grading
- MBTA ROW Boundary
- - - Area of Potential Effect: Central Massachusetts
- - - Railroad Corridor Historic District
- In-Road Transmission Route
- 16-ft Permit Area Buffer
- ▨ Permit Areas
- ▨ Wetland Impact
- ▨ Bank and Fill in Waterway
- Delineated Wetland Edge
- ⋯ Approximate Wetland Edge
- Delineated Top of Bank
- Delineated Vernal Pool Edge
- Perennial Stream
- ▨ Vernal Pool Area
- ▨ Wetland Area
- ▨ Land Under Water
- ▨ Wetland Replication Area
- ▨ Bordering Land Subject to Flooding
- ▨ Drainage Ditch (1995)
- ▨ Town Boundaries

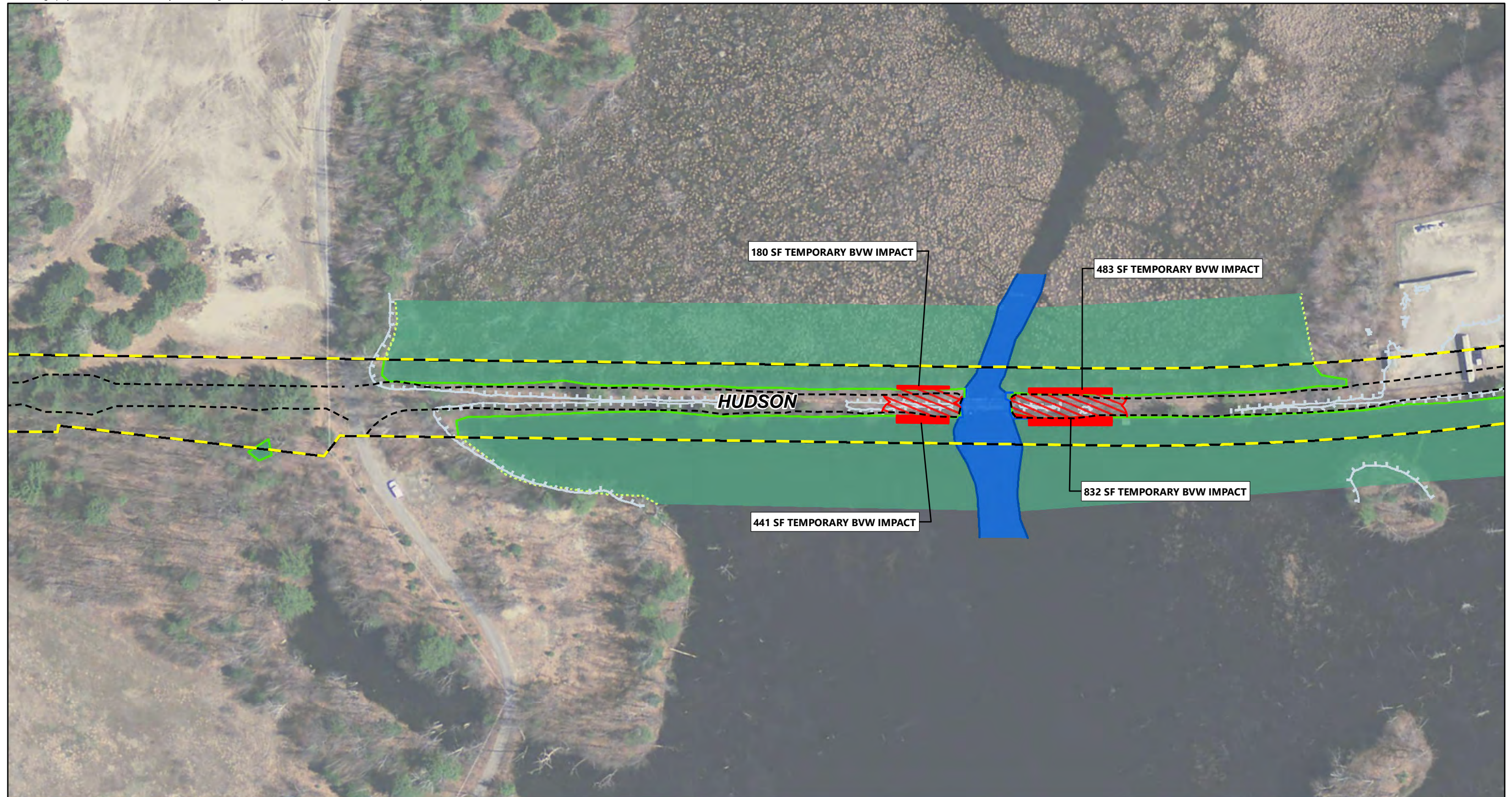


Sudbury-Hudson Transmission Reliability Project

**Figure 1
USACE Permit Area Plans**

Source:
MassGIS, 2015
Ortholmavery, VHB
11/18/2021





- Limit of Grading
- MBTA ROW Boundary
- - - Area of Potential Effect: Central Massachusetts Railroad Corridor Historic District
- In-Road Transmission Route
- 16-ft Permit Area Buffer
- ▨ Permit Areas
- ▨ Wetland Impact
- ▨ Bank and Fill in Waterway
- Delineated Wetland Edge
- ⋯ Approximate Wetland Edge
- Delineated Top of Bank
- Delineated Vernal Pool Edge
- ▨ Vernal Pool Area
- Wetland Area
- Land Under Water
- ▨ Wetland Replication Area
- ▨ Bordering Land Subject to Flooding
- ▨ Drainage Ditch (1995)
- ▨ Town Boundaries

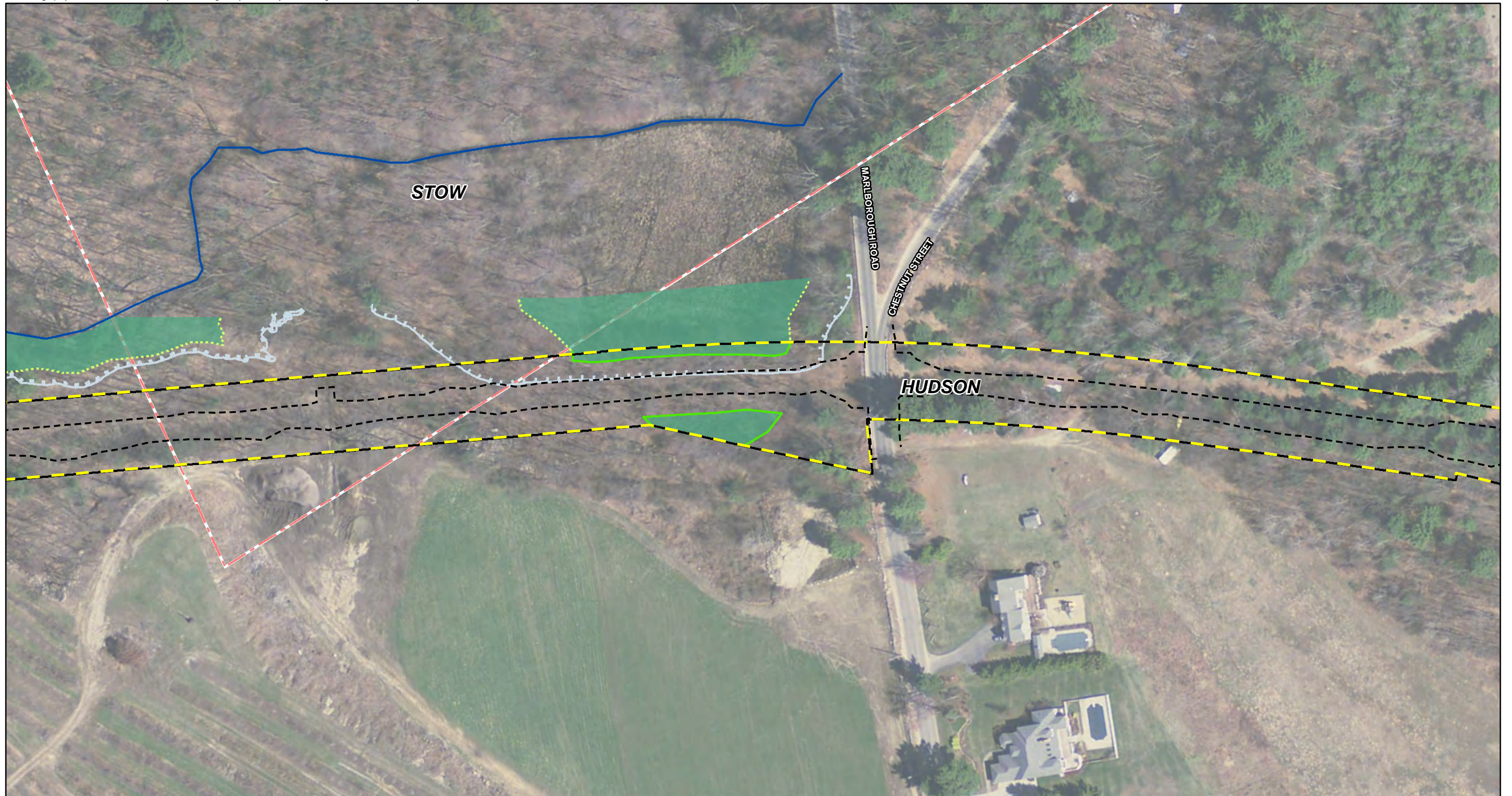


Sudbury-Hudson Transmission Reliability Project

**Figure 1
USACE Permit Area Plans**

Source:
MassGIS, 2015
Orthoimagery, VHB
11/18/2021





- Limit of Grading
- MBTA ROW Boundary
- Area of Potential Effect: Central Massachusetts
- Railroad Corridor Historic District
- In-Road Transmission Route
- 16-ft Permit Area Buffer
- Permit Areas
- Wetland Impact
- Bank and Fill in Waterway
- Delineated Wetland Edge
- Approximate Wetland Edge
- Delineated Top of Bank
- Delineated Vernal Pool Edge
- Perennial Stream
- Vernal Pool Area
- Wetland Area
- Land Under Water
- Wetland Replication Area
- Bordering Land Subject to Flooding
- Drainage Ditch (1995)
- Town Boundaries



Sudbury-Hudson Transmission Reliability Project

**Figure 1
USACE Permit Area Plans**

Source:
MassGIS, 2015
Orthomagery, VHB

11/18/2021





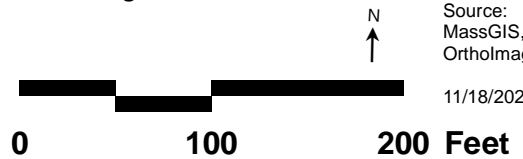
- Limit of Grading
- MBTA ROW Boundary
- - - Area of Potential Effect: Central Massachusetts
- - - Railroad Corridor Historic District
- In-Road Transmission Route
- 16-ft Permit Area Buffer
- ▨ Permit Areas
- ▨ Wetland Impact
- ▨ Bank and Fill in Waterway
- Delineated Wetland Edge
- - - Approximate Wetland Edge
- Delineated Top of Bank
- Delineated Vernal Pool Edge
- ▨ Vernal Pool Area
- ▨ Wetland Area
- ▨ Land Under Water
- ▨ Wetland Replication Area
- ▨ Bordering Land Subject to Flooding
- ▨ Drainage Ditch (1995)
- ▨ Town Boundaries



Sudbury-Hudson Transmission Reliability Project

**Figure 1
USACE Permit Area Plans**

Source:
MassGIS, 2015
Orthomagery, VHB
11/18/2021





- Limit of Grading
- MBTA ROW Boundary
- - - Area of Potential Effect: Central Massachusetts Railroad Corridor Historic District
- In-Road Transmission Route
- 16-ft Permit Area Buffer
- ▨ Permit Areas
- ▨ Wetland Impact
- ▨ Bank and Fill in Waterway
- Delineated Wetland Edge
- ⋯ Approximate Wetland Edge
- Delineated Top of Bank
- Delineated Vernal Pool Edge
- ▨ Vernal Pool Area
- ▨ Wetland Area
- ▨ Land Under Water
- ▨ Wetland Replication Area
- ▨ Bordering Land Subject to Flooding
- ▨ Drainage Ditch (1995)
- ▨ Town Boundaries

EVERSOURCE
ENERGY

Sudbury-Hudson Transmission Reliability Project

Figure 1
USACE Permit Area Plans

Source:
MassGIS, 2015
Orthomagery, VHB
11/18/2021

0 100 200 Feet





- Limit of Grading
- MBTA ROW Boundary
- Area of Potential Effect: Central Massachusetts
- Railroad Corridor Historic District
- In-Road Transmission Route
- 16-ft Permit Area Buffer
- ▨ Permit Areas
- ▨ Wetland Impact
- ▨ Bank and Fill in Waterway
- Delineated Wetland Edge
- ⋯ Approximate Wetland Edge
- Delineated Top of Bank
- Delineated Vernal Pool Edge
- Perennial Stream
- ▨ Vernal Pool Area
- ▨ Wetland Area
- ▨ Land Under Water
- ▨ Wetland Replication Area
- ▨ Bordering Land Subject to Flooding
- ▨ Drainage Ditch (1995)
- ▨ Town Boundaries

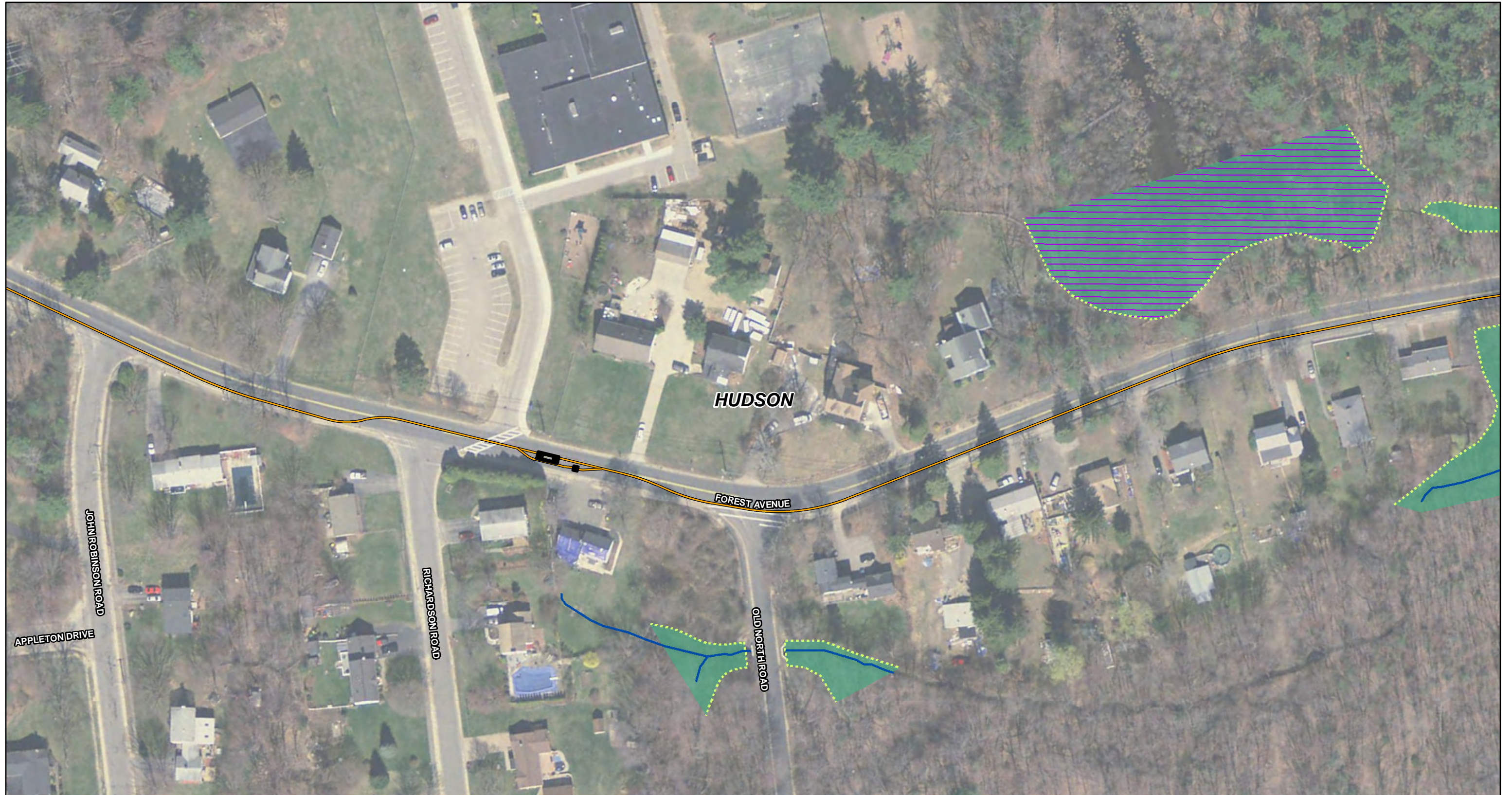


Sudbury-Hudson Transmission Reliability Project

**Figure 1
USACE Permit Area Plans**

Source:
MassGIS, 2015
Orthomagery, VHB
11/18/2021





- Limit of Grading
- MBTA ROW Boundary
- Area of Potential Effect: Central Massachusetts
- Railroad Corridor Historic District
- In-Road Transmission Route
- 16-ft Permit Area Buffer
- Permit Areas
- Wetland Impact
- Bank and Fill in Waterway
- Delineated Wetland Edge
- Approximate Wetland Edge
- Delineated Top of Bank
- Delineated Vernal Pool Edge
- Perennial Stream
- Vernal Pool Area
- Wetland Area
- Land Under Water
- Wetland Replication Area
- Bordering Land Subject to Flooding
- Drainage Ditch (1995)
- Town Boundaries



Sudbury-Hudson Transmission Reliability Project

**Figure 1
USACE Permit Area Plans**

Source:
MassGIS, 2015
Orthomagery, VHB
11/18/2021





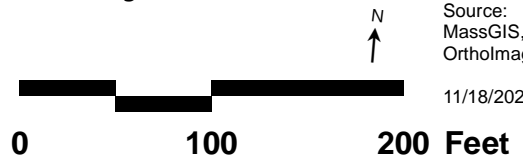
- Limit of Grading
- MBTA ROW Boundary
- - - Area of Potential Effect: Central Massachusetts Railroad Corridor Historic District
- In-Road Transmission Route
- 16-ft Permit Area Buffer
- ▨ Permit Areas
- Wetland Impact
- Bank and Fill in Waterway
- Delineated Wetland Edge
- ⋯ Approximate Wetland Edge
- Delineated Top of Bank
- Delineated Vernal Pool Edge
- ▨ Vernal Pool Area
- Wetland Area
- Land Under Water
- Wetland Replication Area
- ▨ Bordering Land Subject to Flooding
- ▨ Drainage Ditch (1995)
- ▨ Town Boundaries



Sudbury-Hudson Transmission Reliability Project

**Figure 1
USACE Permit Area Plans**

Source:
MassGIS, 2015
Orthomagery, VHB
11/18/2021





- Limit of Grading
- MBTA ROW Boundary
- Area of Potential Effect: Central Massachusetts
- Railroad Corridor Historic District
- In-Road Transmission Route
- 16-ft Permit Area Buffer
- Permit Areas
- Wetland Impact
- Bank and Fill in Waterway
- Delineated Wetland Edge
- Approximate Wetland Edge
- Delineated Top of Bank
- Delineated Vernal Pool Edge
- Perennial Stream
- Vernal Pool Area
- Wetland Area
- Land Under Water
- Wetland Replication Area
- Bordering Land Subject to Flooding
- Drainage Ditch (1995)
- Town Boundaries



Sudbury-Hudson Transmission Reliability Project

**Figure 1
USACE Permit Area Plans**

Source:
MassGIS, 2015
Orthomagery, VHB
11/18/2021

