

Figure 10. Avoidance and protection measures for sensitive cultural resource area SUD-HA-37.

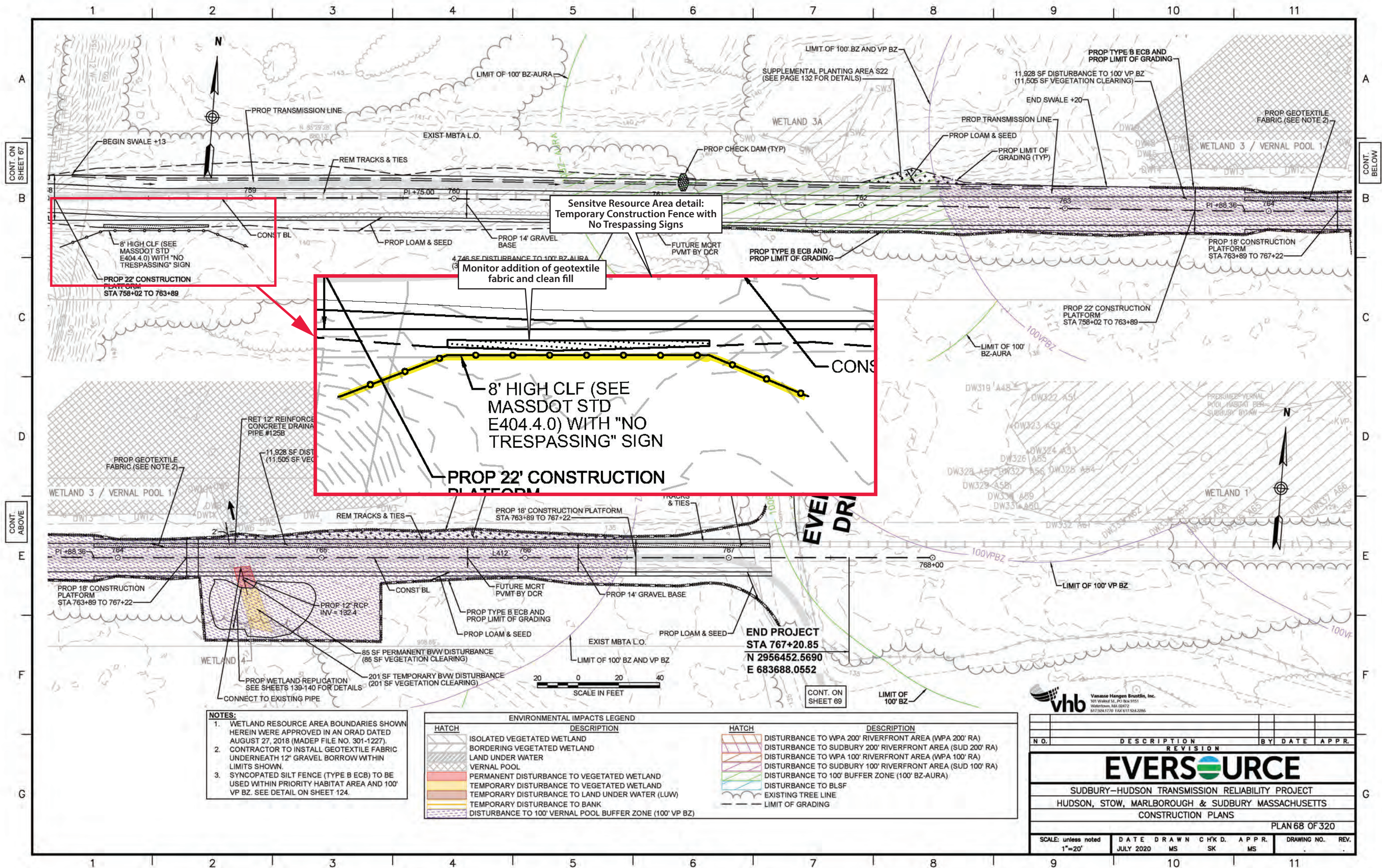


Figure 11. Avoidance and protection measures for sensitive cultural resource area SUD-HA-39.

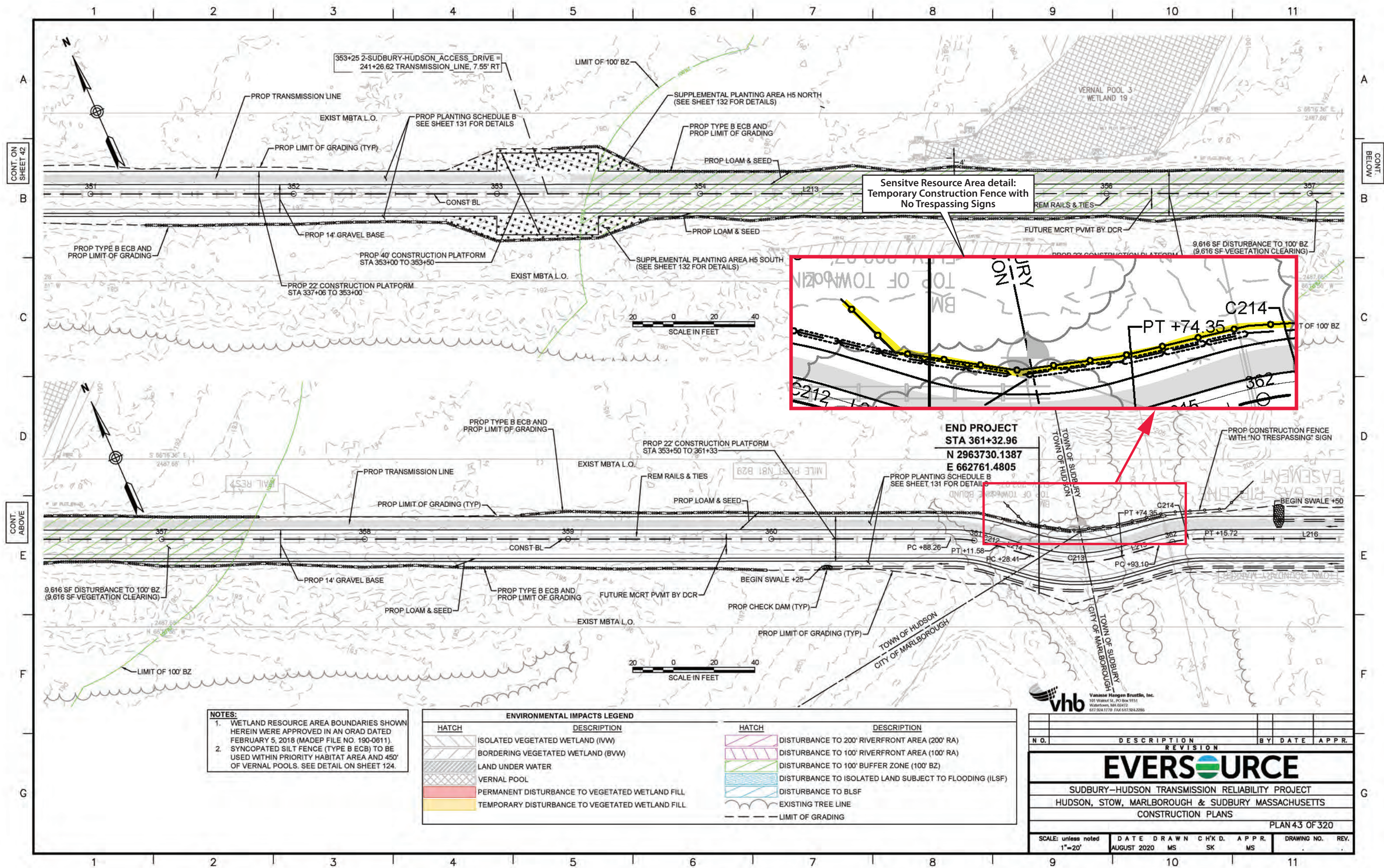


Figure 12. Avoidance and protection measures for the Sudbury-Hudson-Marlborough town boundary marker.

Attachment B

Bridge Photo Renderings and Plan Sheets

BRIDGE 128 (existing)

Approx. 18" of stone block backwall to be partially removed

Existing timber ties, steel rails, timber deck, and timber handrails to be removed

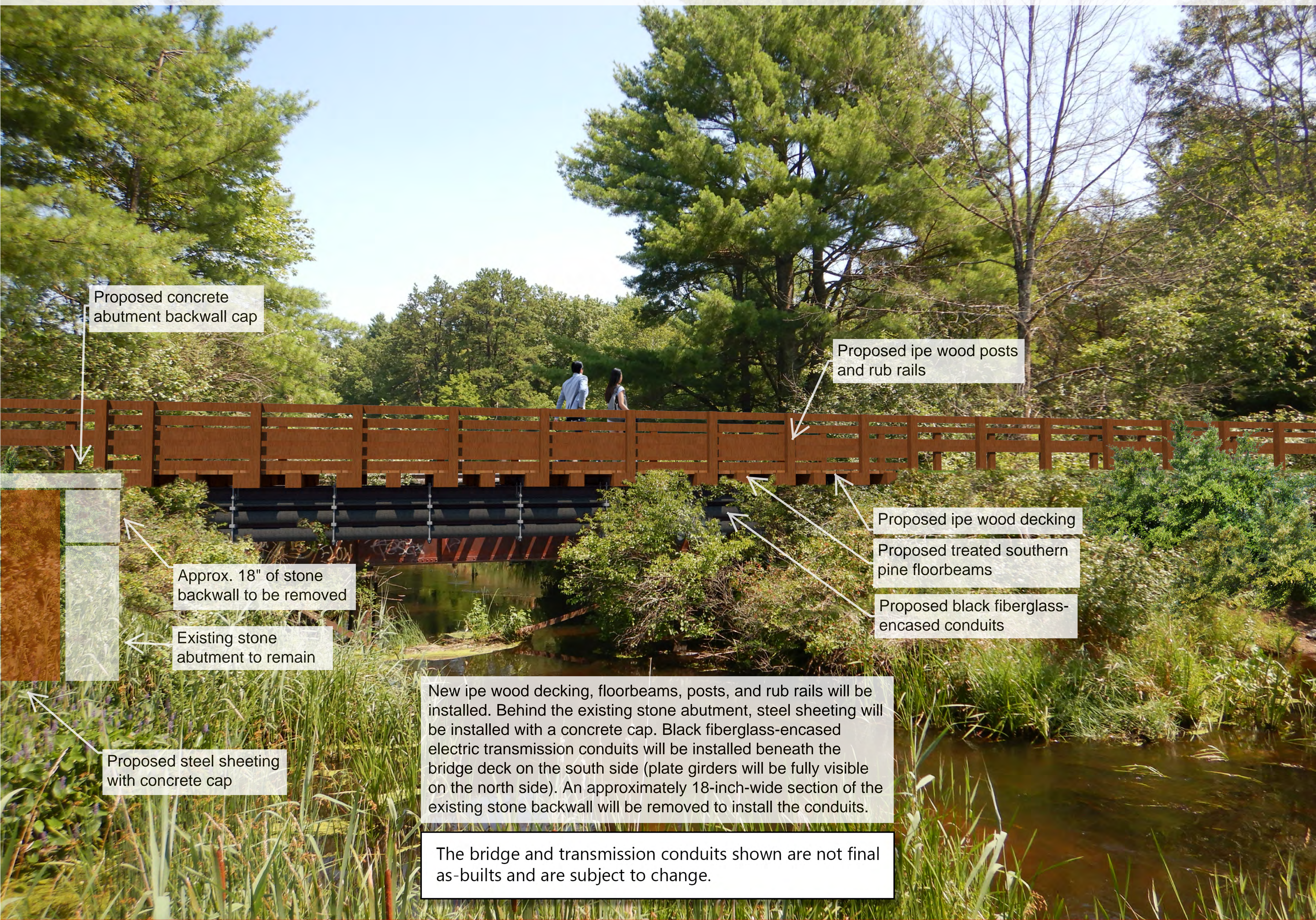
Existing steel web plate, angles, cover plates, stiffeners, and bracing to remain

Existing timber piers to remain

Existing stone abutment to remain

The existing timber ties, steel rails, timber deck, and timber handrails will be removed. The existing stone abutment will remain in place, with a small part of the backwall to be partially removed. The existing steel web plate, angles, cover plates, stiffeners, and bracing, as well as the existing timber piers, will also remain in place.

BRIDGE 128 (proposed)



Proposed concrete abutment backwall cap

Proposed ipe wood posts and rub rails

Approx. 18" of stone backwall to be removed

Existing stone abutment to remain

Proposed ipe wood decking

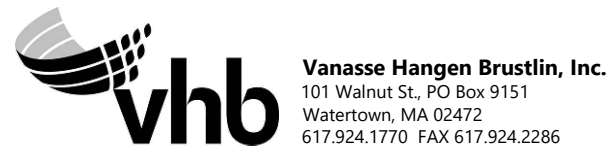
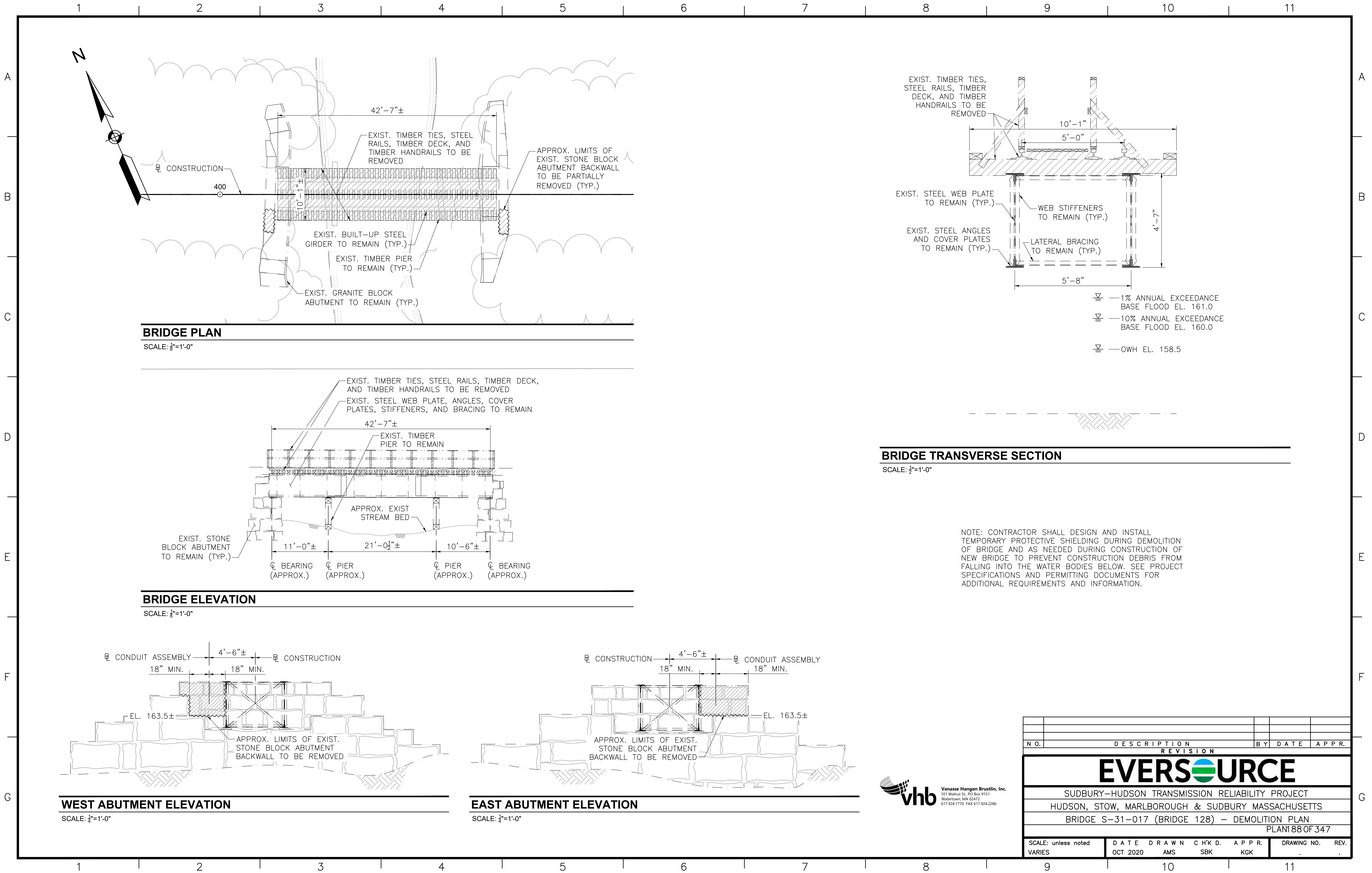
Proposed treated southern pine floorbeams

Proposed black fiberglass-encased conduits

Proposed steel sheeting with concrete cap

New ipe wood decking, floorbeams, posts, and rub rails will be installed. Behind the existing stone abutment, steel sheeting will be installed with a concrete cap. Black fiberglass-encased electric transmission conduits will be installed beneath the bridge deck on the south side (plate girders will be fully visible on the north side). An approximately 18-inch-wide section of the existing stone backwall will be removed to install the conduits.

The bridge and transmission conduits shown are not final as-builts and are subject to change.



N.O.	DESCRIPTION					BY	DATE		APPR.
REVISION									
EVERSOURCE									
SUDBURY-HUDSON TRANSMISSION RELIABILITY PROJECT									
HUDSON, STOW, MARLBOROUGH & SUDBURY MASSACHUSETTS									
BRIDGE S-31-017 (BRIDGE 128) - DEMOLITION PLAN									
PLAN 188 OF 347									
SCALE: unless noted VARIES		DATE	DRAWN	CHECKED	APPR.	DRAWING NO.		REV.	
		OCT 2020	AMS	SBK	KGK	.		.	

BRIDGE 127 (existing)

Existing timber piers
(underwater) to be cut at
mudline and removed

Existing timber ties &
steel rails to be removed

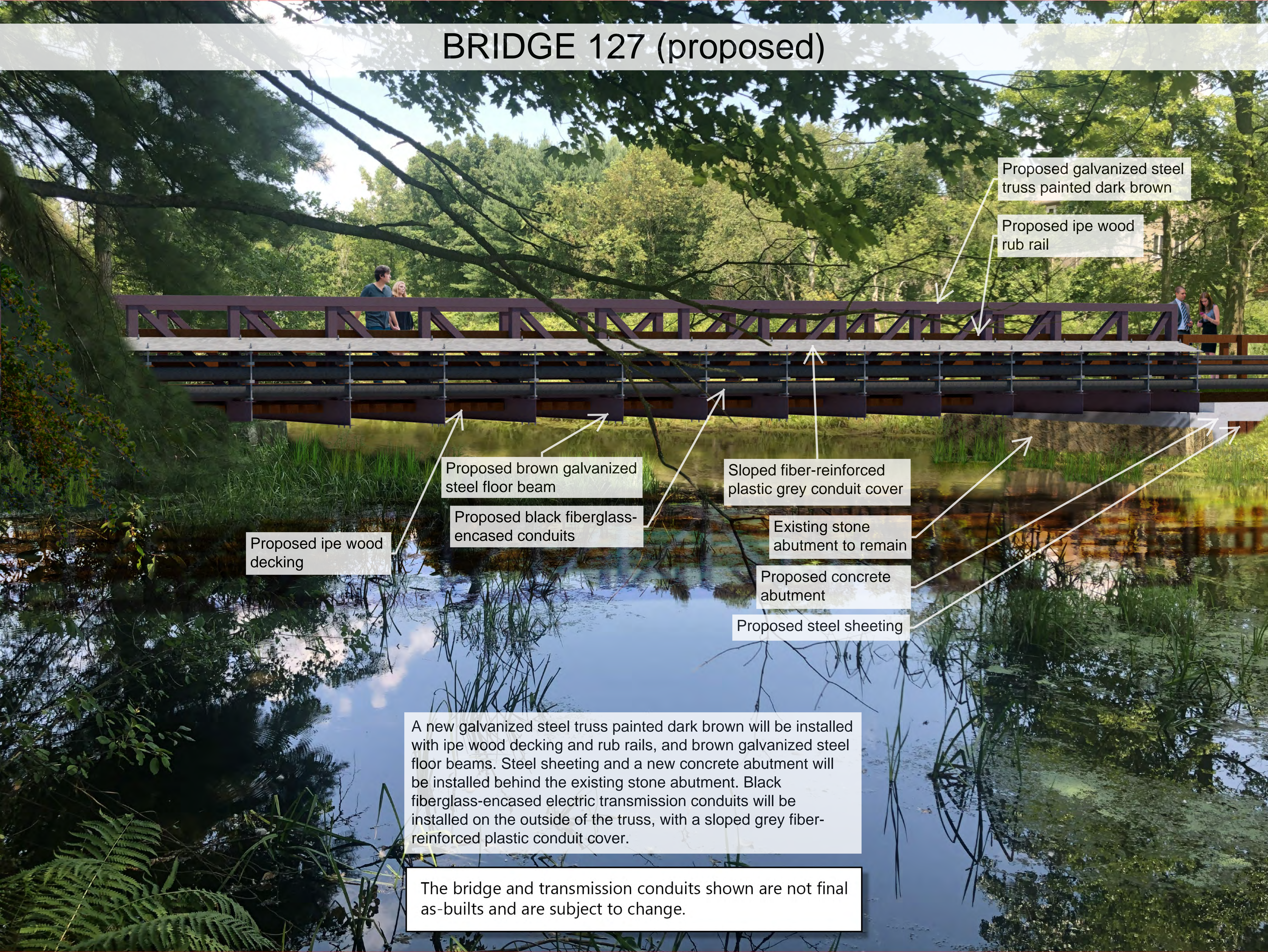
Existing steel web plate,
angles, cover plates,
stiffeners, and bracing to
be removed

Existing stone
abutment to remain

Existing stone block backwall to
be removed (top 2 courses)

The existing timber ties, steel rails, steel web plate, angles, cover plates, stiffeners, and bracing will be removed. The existing timber piers will be cut at the mudline and removed. The existing stone abutment will remain in place, with the top two courses of the backwall to be removed.

BRIDGE 127 (proposed)



Proposed galvanized steel truss painted dark brown

Proposed ipe wood rub rail

Proposed brown galvanized steel floor beam

Proposed black fiberglass-encased conduits

Proposed ipe wood decking

Sloped fiber-reinforced plastic grey conduit cover

Existing stone abutment to remain

Proposed concrete abutment

Proposed steel sheeting

A new galvanized steel truss painted dark brown will be installed with ipe wood decking and rub rails, and brown galvanized steel floor beams. Steel sheeting and a new concrete abutment will be installed behind the existing stone abutment. Black fiberglass-encased electric transmission conduits will be installed on the outside of the truss, with a sloped grey fiber-reinforced plastic conduit cover.

The bridge and transmission conduits shown are not final as-builts and are subject to change.

