

# **RECONNAISSANCE SURVEY REPORT PHOTOGRAPHS**



Plate 1. ROW north of Sudbury Substation 342, view southeast.



Plate 2. ROW north of Sudbury Substation 342, view southwest.





Plate 3. Low cut section of rail bed east of access road, view east.



Plate 4. Access road crossing to Sudbury Substation 342, view southeast.





Plate 5. Cut and filled section of rail bed east of Landham Road, view east.



Plate 6. Cut rail bed and site of East Sudbury Station south of rail with Landham Road bridge/crossing to west, view south.





Plate 7. Granite mile marker north of the raised rail bed, view northeast.



Plate 8. Concrete post north of raised rail bed, view east.





Plate 9. Signal tower north of terraced rail bed, view north.



Plate 10. Dump on knoll and barrow pit north of rail bed includes a ca. 1930s auto, view east.





Plate 11. Railroad bridge support over Hop Brook, view east.



Plate 12. Railroad bridge across Hop Brook, view southeast.





Plate 13. Concrete slab feature along terraced rail bed section, view east.



Plate 14. 1890 B & M Railroad Section House and rail bed, view southeast.





Plate 15. 1890 B & M Railroad Section House, north adjacent to rail bed, view northeast.



Plate 16. Route 20/Boston Post Road crossing, view southeast.





Plate 17. East of Union Avenue, low damp area with channeled stream to north, view southeast.



Plate 18. Granite mile marker and location of former South Sudbury Station (SUD-HA-26) south of the rails, now asphalt covered with 1950s building, view southeast.



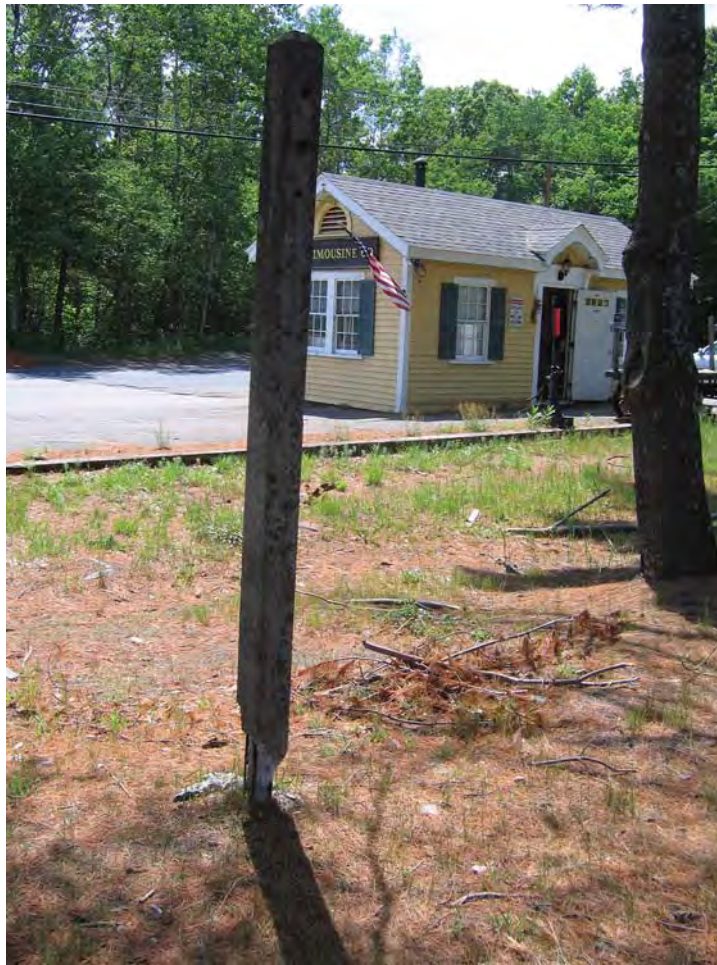


Plate 19. Concrete marker and 1950s building near former junction railroad station (SUD-HA-26), view southwest.



Plate 20. Granite mile marker north of the rail bed west near Union Avenue, view east.





Plate 21. The first of four electrical boxes north of the rail bed nearing Union Avenue, view south.



Plate 22. The second of four electrical boxes north of the rail bed nearing Union Avenue, view southwest.





Plate 23. The third of four electrical boxes north of the rail bed nearing Union Avenue; note telegraph pole to left, view east.



Plate 24. The fourth of four electrical boxes north of the rail bed nearing Union Avenue, view east.





Plate 25. Railroad cut north of fenced Raytheon parcel, view southeast.



Plate 26. Telegraph line pole in Sudbury north of the rail bed, view north.





Plate 27. Concrete culvert at intermittent stream, view west.



Plate 28. Raised rail bed at wetlands east of Horse Pond Road, view southeast.





Plate 29. Former railroad crossing of Horse Pond Road in Sudbury, view southeast.



Plate 30. Electrical box with cover and signal tower (over 15 ft tall) south of rail bed and west of Horse Pond Road, view southeast.





Plate 31. Electrical box with cover near signal tower south of rail bed and west of Horse Pond Road, view southeast.



Plate 32. Granite mile marker north of rail bed and west of Horse Pond Road, view southeast.





Plate 33. Railroad cut east of Dudley Brook, view southeast.



Plate 34. Electrical box east side of Dudley Brook, north of rail bed, view northeast.





Plate 35. Raised rail bed at Dudley Brook wetlands, view southeast.



Plate 36. Railroad cut immediately east of Peakham Road, view southeast.





Plate 37. Electrical box for crossing gate or signal east side of Peakham Road, view north.



Plate 38. Raised rail bed through wetlands west of Peakham Road, view southeast.





Plate 39. Railroad cut and retaining walls through wooded rise, view east.



Plate 40. Location of former Wayside Inn Station south of rail just west of Dutton Road crossing in Sudbury, view southwest.





Plate 41. Concrete bench supports north of rail bed and west of Dutton Road, view south.



Plate 42. Granite mile marker north of rail bed and west of Dutton Road, view south.





Plate 43. Raised rail bed west of Dutton Road, view southeast.



Plate 44. Railroad cut and berm, view southeast.





Plate 45. Railroad bridge support over Hop Brook, view west.



Plate 46. Railroad bridge across Hop Brook, view southeast.





Plate 47. Railroad bed through excavated sand pit, view southeast.



Plate 48. Railroad cut through wooded rise, view southeast.



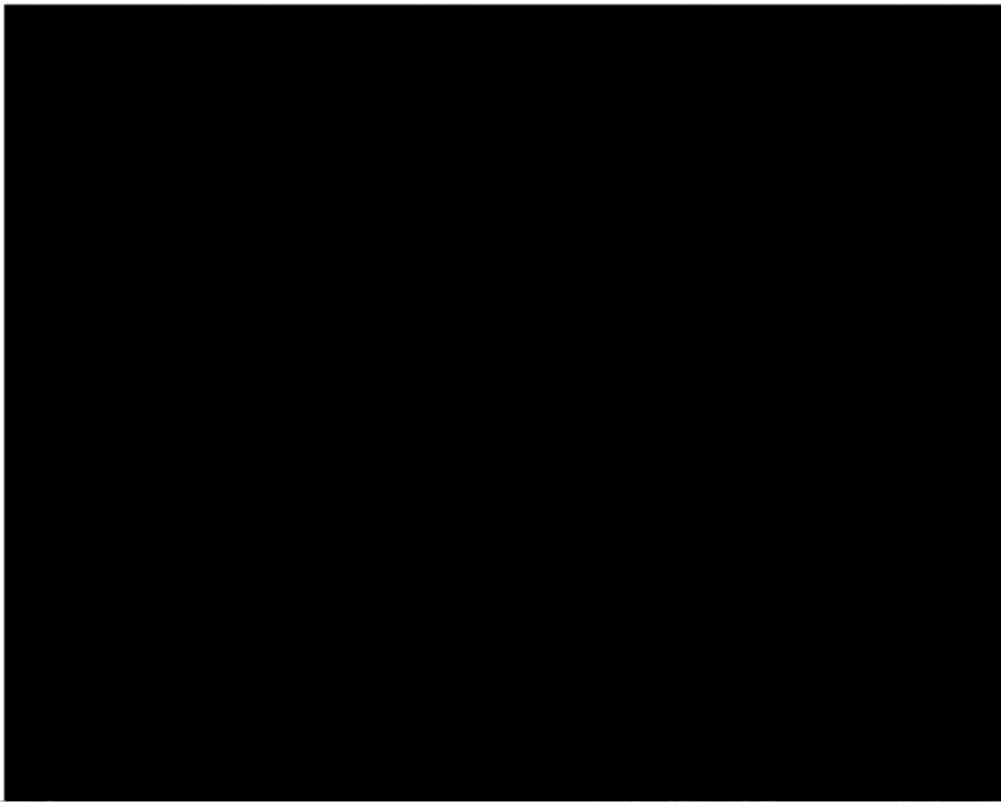


Plate 49. Fieldstone-lined cellar of historic house, 46 ft south from the railroad, view southeast.



Plate 50. Railroad through level terrain, view southeast.





Plate 51. Railroad cut through wooded rise, view southeast.



Plate 52. Tri-town granite marker, within the rail bed west of Old Concord Road, at the town boundaries of Hudson, Sudbury and Marlborough, view southeast.



**INTENSIVE SURVEY REPORT  
PHOTOGRAPHS**





Plate 36. View east of former railroad searchlight signal northwest of STP T42-1.





Plate 41. View west at Transect 50 testing on rise along railroad cut.

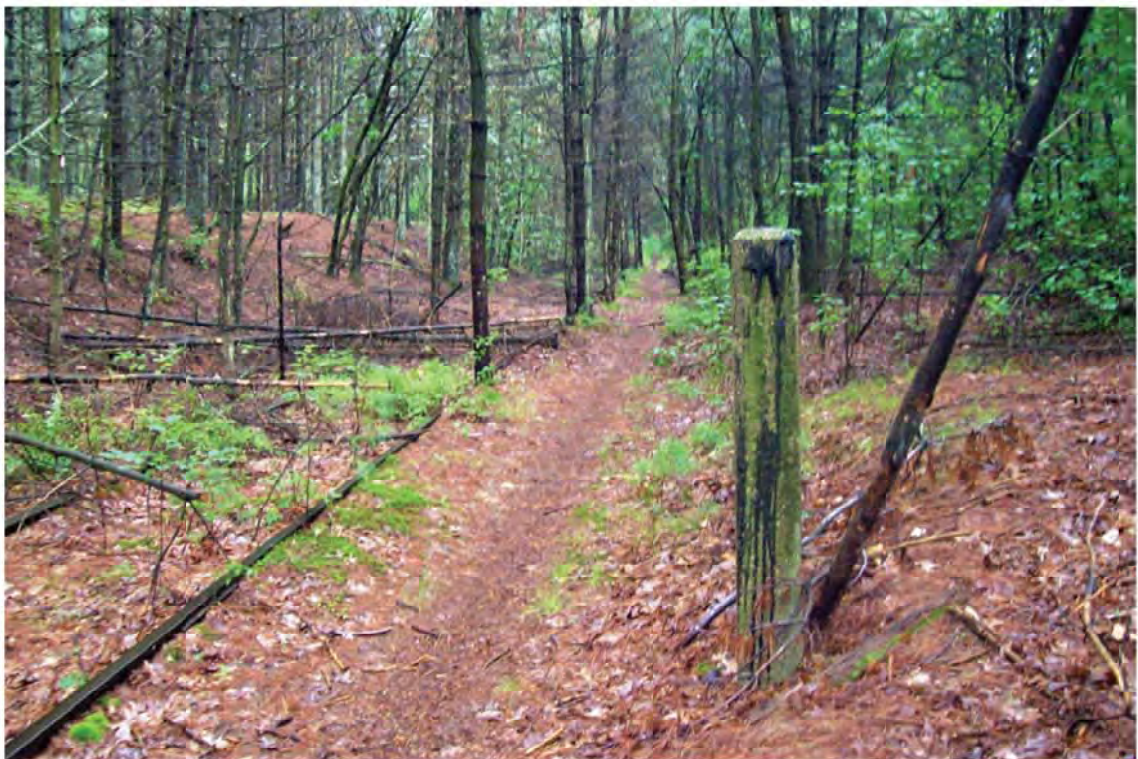


Plate 42. View east beyond Transect 50 along railroad cut and whistle post.





Plate 43. View south at testing at STP T53-6 near granite mile marker N84 B20 and ca. 1952 replacement Sudbury South Station depot.



Plate 44. View west of rail cart and switches at the ca. 1952 replacement Sudbury South Station depot.





Plate 48. Railroad spikes encountered in fill at STP T54-3 view east; scale in 10-cm increments.



Plate 49. View northwest at the Massachusetts Central Railway Bridge 127 (SUD.901) over Hop Brook.



**SUDBURY-HUDSON  
PROJECT PHOTOGRAPHS**





Sudbury-Hudson Photograph 1: Whistle Post Station 403+65, view southeast.





Sudbury-Hudson Photograph 2: Whistle Post Station 513+15, view east.





Sudbury-Hudson Photograph 3: Rail Rest Station 548+90 to 549+20, view east.



Sudbury-Hudson Photograph 4: Rail Rest Station 548+90 to 549+20, view east.





Sudbury-Hudson Photograph 5: Rail Rest Station 594+65 to 594+90, view southeast.





Sudbury-Hudson Photograph 6: Rail Rest Station 594+65 to 594+90, view southeast.





Sudbury-Hudson Photograph 7: Whistle Post Station 712+65, view northwest.





Sudbury-Hudson Photograph 8: Rail Rest Station 743+60 to 744+10, view northeast.