

### Sudbury Health Dept. Weekly COVID-19 Report as of August 26, 2020

The Sudbury Health Department is actively monitoring the status of the COVID-19 pandemic among Sudbury residents. The reporting structure below is designed to balance the privacy of affected residents, while keeping the public informed about COVID-19 activity among Sudbury residents on a weekly basis. The frequency and format are subject to change. It is important to understand that these numbers DO NOT include positive cases among non-residents, who work in Sudbury ONLY THOSE who LIVE IN SUDBURY.

**Table 1. Distribution of confirmed and clinically diagnosed cases in Sudbury**

COVID-19 Diagnosis	Total Cases	New Cases	Active cases	Recovered/off quarantine
Confirmed* COVID-19	213	3	3	175
Probable** COVID-19	39	3	0	36
Contacts***	136	12	8	128

\*Confirmed cases are individuals who had a positive lab test.

\*\*Probable cases are individuals, who had positive antibody/antigen testing and/or were clinically diagnosed with COVID-19 because of symptoms and confirmation of close contact with COVID-19, but were not lab tested. Probable cases may also include individuals whose death certificate listed COVID-19 as a cause of death, who were not lab tested.

\*\*\*Contacts are people who were exposed to a positive case and were quarantined (exposed but no illness).

**Table 2. COVID-19 cases in the community versus long term care facilities**

Sudbury Community Cases	<b>67</b>
Long Term Care Confirmed Cases	<b>146</b>

**Table 3. COVID-19 cases by gender and age**

Female	127
Male	86
0-20	4
20-40	19
40-60	36
60-80	70
>80	84

*Please Note:* These estimates are based upon data reported by the Massachusetts Department of Public Health (MDPH) and change frequently. This report reflects the data available to the Sudbury Health Department on a weekly basis, ending each Wednesday at 12 midnight. Classification of the Events can change based on testing. An example of this would be if an individual identified as a contact became symptomatic and then tested positive, this would change their classification to a confirmed case.

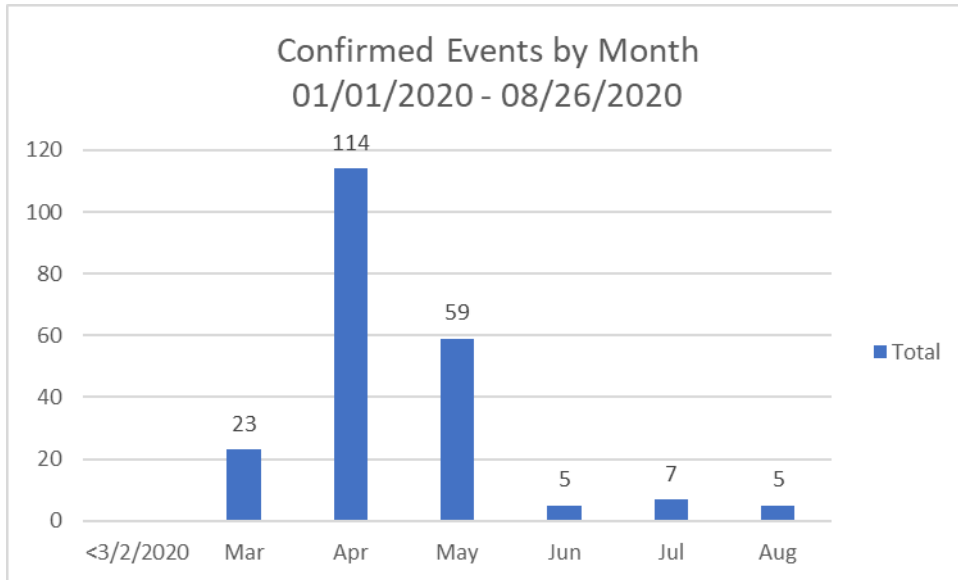


Fig. 1 Confirmed events for Sudbury by month 01/01/2020 – 08/26/20

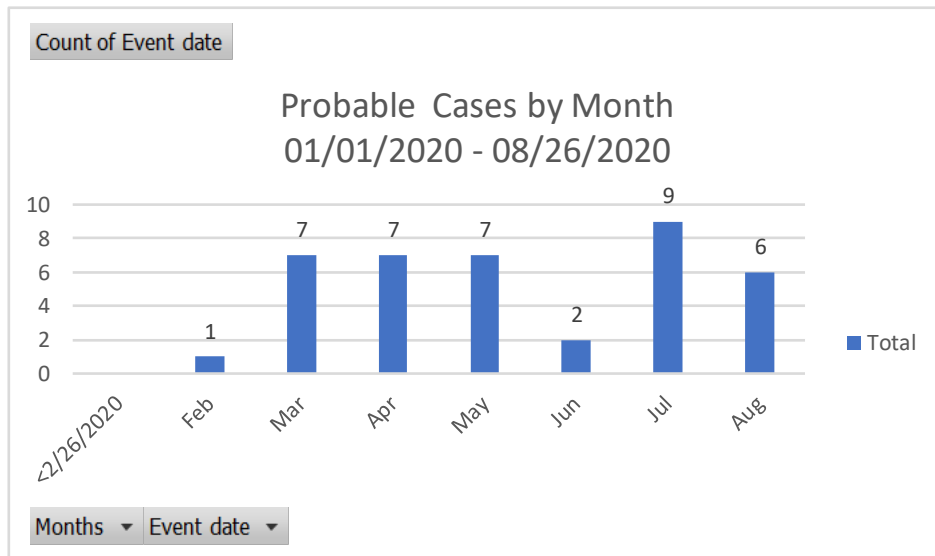


Fig.2 Probable Events by month from 01/01/2020 – 08/26/20

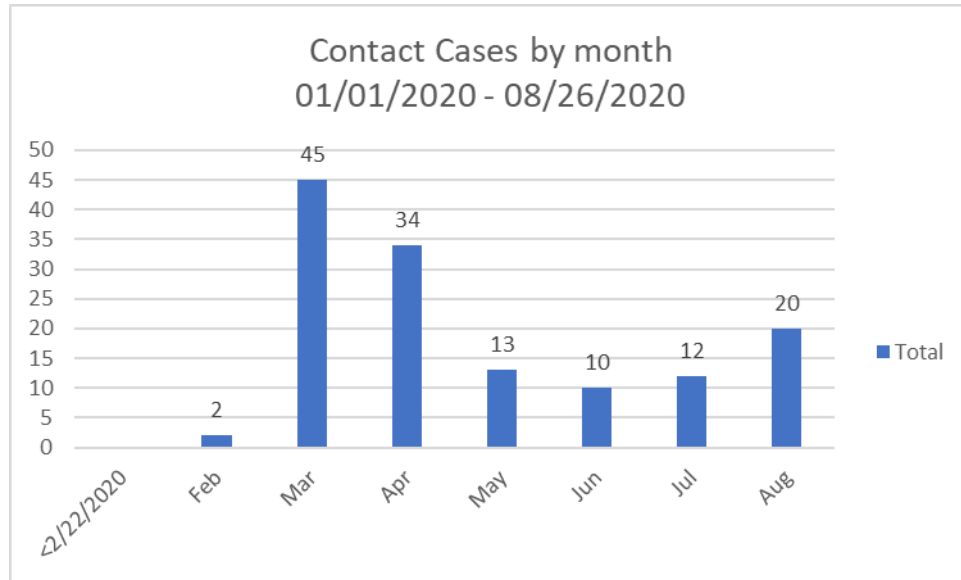


Fig.3 Contact cases by month 01/01/2020 – 08/26/2020

### **MDPH Dashboard Data for 08/26/2020**

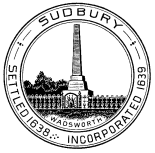
This weeks Public Health Report released by the Massachusetts Department of Public Health (MDPH) gives the most up to date statewide indicators for Sudbury and can be found at:

<https://www.mass.gov/info-details/community-level-covid-19-data-reporting>

If you hover and click over Sudbury the data will appear in a table.

The MDPH classification of all communities can be found at:

<https://www.mass.gov/info-details/covid-19-response-reporting# covid-19-weekly-public-health-report->



**Sudbury Health Dept. Weekly COVID-19 Report as of August 17, 2020**

The Sudbury Health Department is actively monitoring the status of the COVID-19 pandemic among Sudbury residents. The reporting structure below is designed to balance the privacy of affected residents, while keeping the public informed about COVID-19 activity among Sudbury residents on a weekly basis. The frequency and format are subject to change. It is important to understand that these numbers DO NOT include positive cases among non-residents, who work in Sudbury ONLY THOSE who LIVE IN SUDBURY.

**Table 1. Distribution of confirmed and clinically diagnosed cases in Sudbury**

COVID-19 Diagnosis	Total Cases	New Cases	Active cases	Recovered/off quarantine
Confirmed* COVID-19	210	2	6	169
Probable** COVID-19	36	6	0	33
Contacts***	125	3	7	118

\*Confirmed cases are individuals who had a positive lab test.

\*\*Probable cases are individuals, who had positive antibody testing and/or were clinically diagnosed with COVID-19 because of symptoms and confirmation of close contact with COVID-19, but were not lab tested. Probable cases may also include individuals whose death certificate listed COVID-19 as a cause of death, who were not lab tested.

\*\*\*Contacts are people who were exposed to a positive case and were quarantined (exposed but no illness).

**Table 2. COVID-19 cases in the community versus long term care facilities**

Sudbury Community Cases	<b>65</b>
Long Term Care Confirmed Cases	<b>145</b>

**Table 3. COVID-19 cases by gender and age**

Female	126
Male	84
0-20	3
20-40	19
40-60	36
60-80	69
>80	83

*Please Note:* These estimates are based upon data reported by the Massachusetts Department of Public Health and change frequently. This report reflects the data available to the Sudbury Health Department on a weekly basis, ending each Monday at 12 midnight.

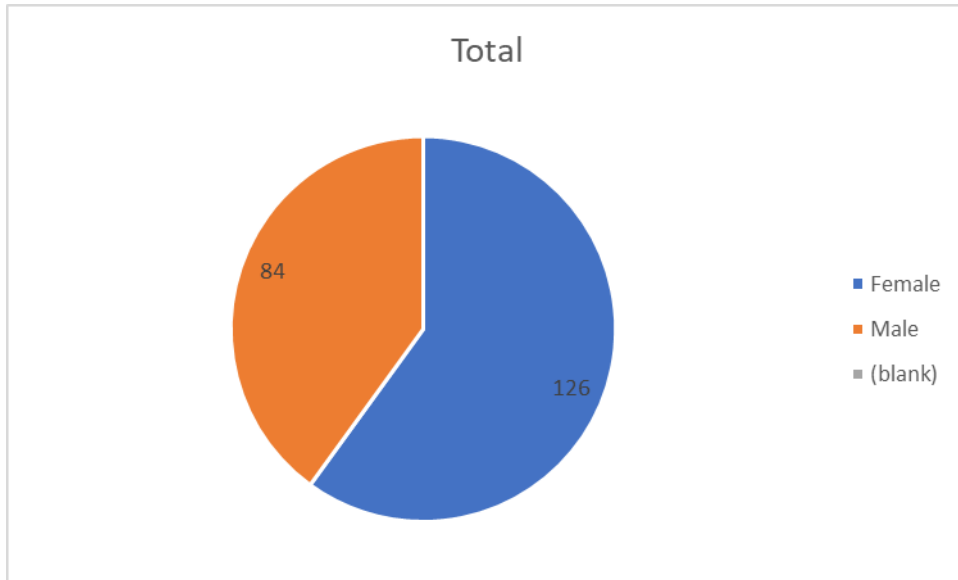


Figure 1: Confirmed cases by gender from 3/2/2020 to present

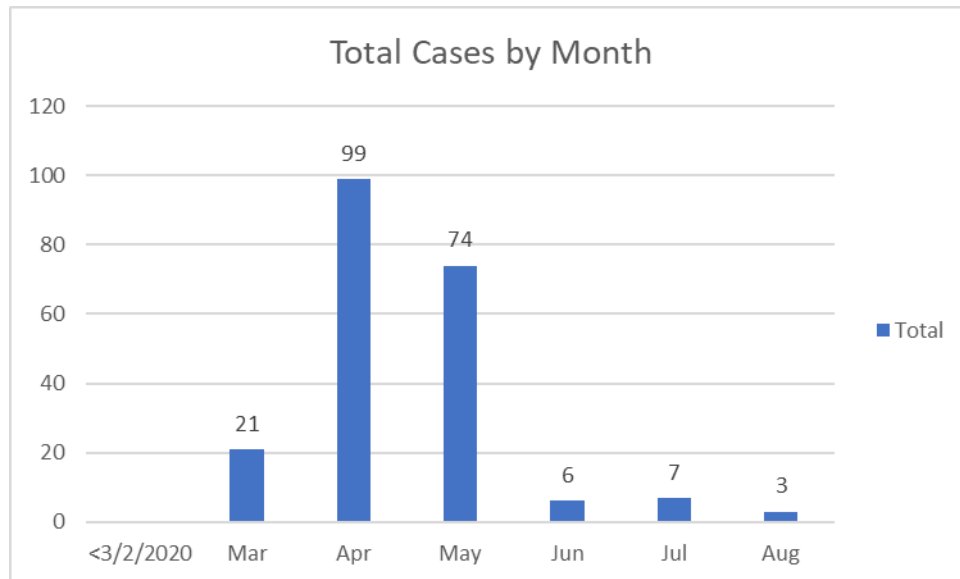


Figure 2: Confirmed cases by month from 3/2/2020 to present

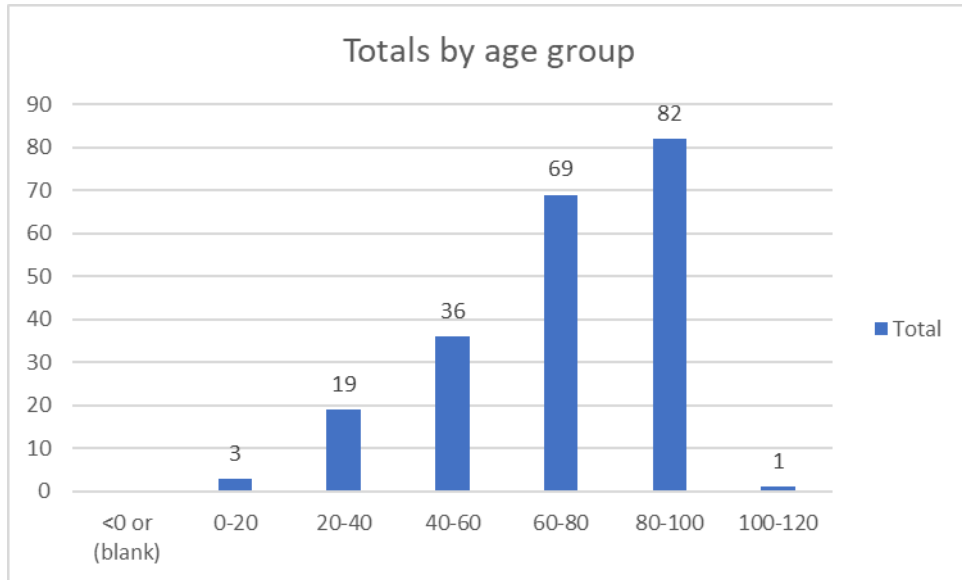
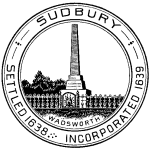


Figure 3: Age distribution of confirmed cases from 3/2/2020 to present



# Town of Sudbury

## Board of Health

Sudbury Health Department  
275 Old Lancaster Road  
Sudbury, MA 01776

### Sudbury Health Dept. Weekly COVID-19 Report as of August 10, 2020

The Sudbury Health Department is actively monitoring the status of the COVID-19 pandemic among Sudbury residents. The reporting structure below is designed to balance the privacy of affected residents, while keeping the public informed about COVID-19 activity among Sudbury residents on a weekly basis. The frequency and format are subject to change. It is important to understand that these numbers DO NOT include positive cases among non-residents, who work in Sudbury ONLY THOSE who LIVE IN SUDBURY.

**Table 1. Distribution of confirmed and clinically diagnosed cases in Sudbury**

COVID-19 Diagnosis	Total Cases	New Cases	Active cases	Recovered/off quarantine
Confirmed* COVID-19	208	3	5	168
Probable** COVID-19	30	0	1	27
Contacts***	122	4	5	117

\*Confirmed cases are individuals who had a positive lab test.

\*\*Probable cases are individuals, who had positive antibody testing and/or were clinically diagnosed with COVID-19 because of symptoms and confirmation of close contact with COVID-19, but were not lab tested. Probable cases may also include individuals whose death certificate listed COVID-19 as a cause of death, who were not lab tested.

\*\*\*Contacts are people who were exposed to a positive case and were quarantined (exposed but no illness).

**Table 2. COVID-19 cases in the community versus long term care facilities**

Sudbury Community Cases	<b>63</b>
Long Term Care Confirmed Cases	<b>145</b>

**Table 3. COVID-19 cases by gender and age**

Female	126
Male	82
0-20	2
20-40	19
40-60	35
60-80	69
>80	83

*Please Note:* These estimates are based upon data reported by the Massachusetts Department of Public Health and change frequently. This report reflects the data available to the Sudbury Health Department on a weekly basis, ending each Monday at 12 midnight.

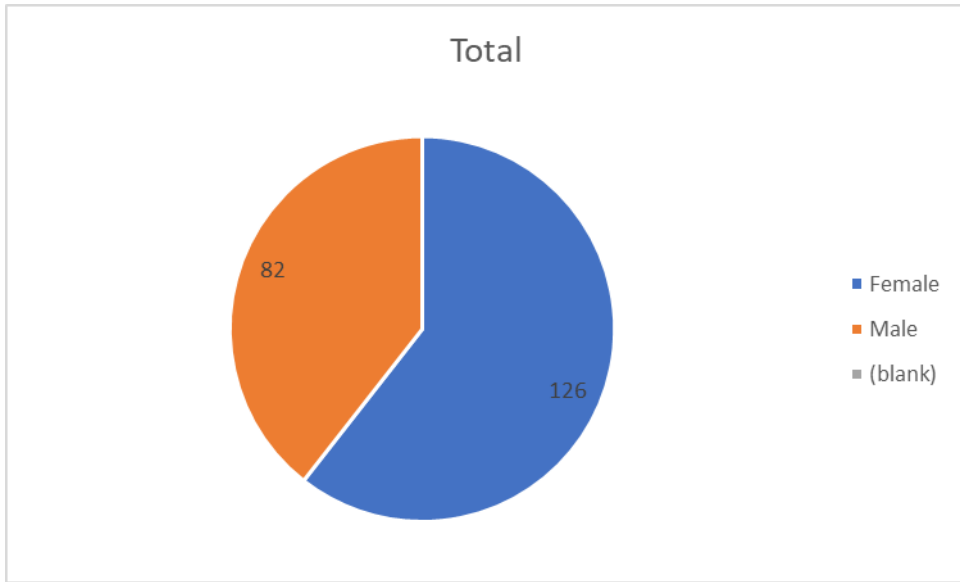


Figure 1: Confirmed cases by gender from 3/2/2020 to present

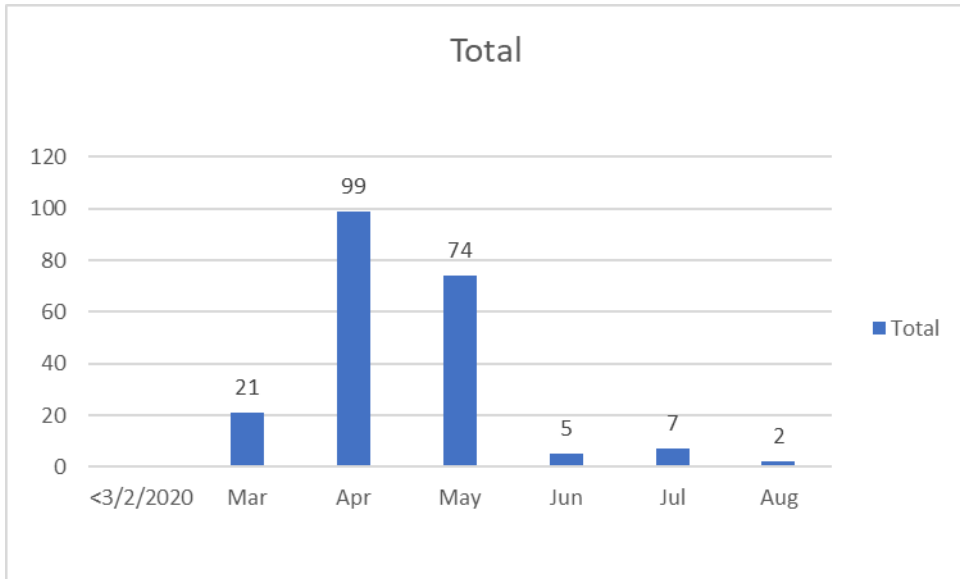


Figure 2: Confirmed cases by month from 3/2/2020 to present



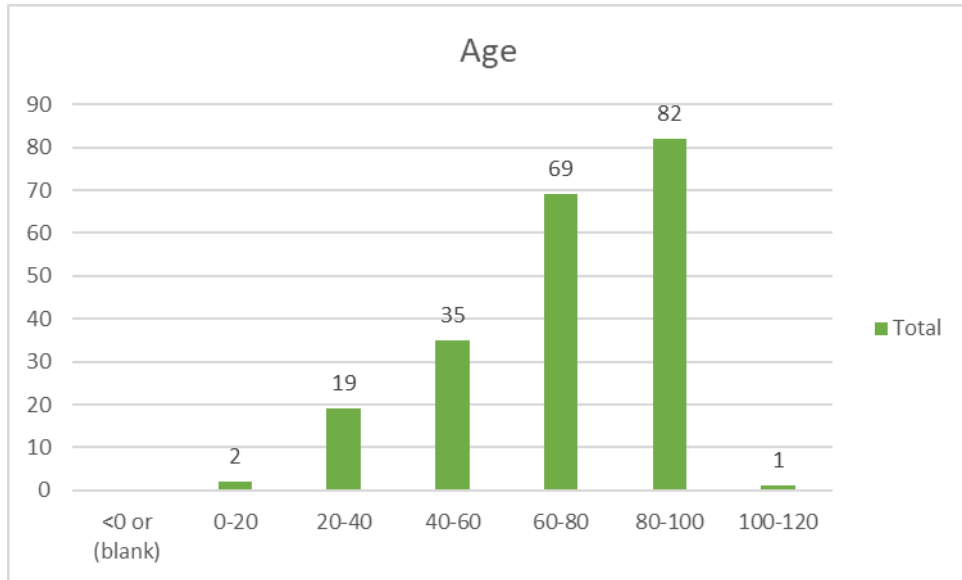
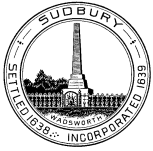


Figure 3: Age distribution of confirmed cases from 3/2/2020 to present



**Sudbury Health Dept. Weekly COVID-19 Report as of August 3, 2020**

The Sudbury Health Department is actively monitoring the status of the COVID-19 pandemic among Sudbury residents. The reporting structure below is designed to balance the privacy of affected residents, while keeping the public informed about COVID-19 activity among Sudbury residents on a weekly basis. The frequency and format are subject to change. It is important to understand that these numbers DO NOT include positive cases among non-residents, who work in Sudbury ONLY THOSE who LIVE IN SUDBURY.

**Table 1. Distribution of confirmed and clinically diagnosed cases in Sudbury**

COVID-19 Diagnosis	Total Cases	New Cases	Active cases	Recovered/off quarantine
Confirmed* COVID-19	205	2	6	164
Probable** COVID-19	30	3	1	27
Contacts***	118	1	1	117

\*Confirmed cases are individuals who had a positive lab test.

\*\*Probable cases are individuals, who had positive antibody testing and/or were clinically diagnosed with COVID-19 because of symptoms and confirmation of close contact with COVID-19, but were not lab tested. Probable cases may also include individuals whose death certificate listed COVID-19 as a cause of death, who were not lab tested.

\*\*\*Contacts are people who were exposed to a positive case and were quarantined (exposed but no illness).

**Table 2. COVID-19 cases in the community versus long term care facilities**

Sudbury Community Cases	<b>59</b>
Long Term Care Confirmed Cases	<b>146</b>

**Table 3. COVID-19 cases by gender and age**

Female	126
Male	79
0-20	2
20-40	18
40-60	34
60-80	68
>80	83

*Please Note:* These estimates are based upon data reported by the Massachusetts Department of Public Health and change frequently. This report reflects the data available to the Sudbury Health Department on a weekly basis, ending each Monday at 12 midnight.

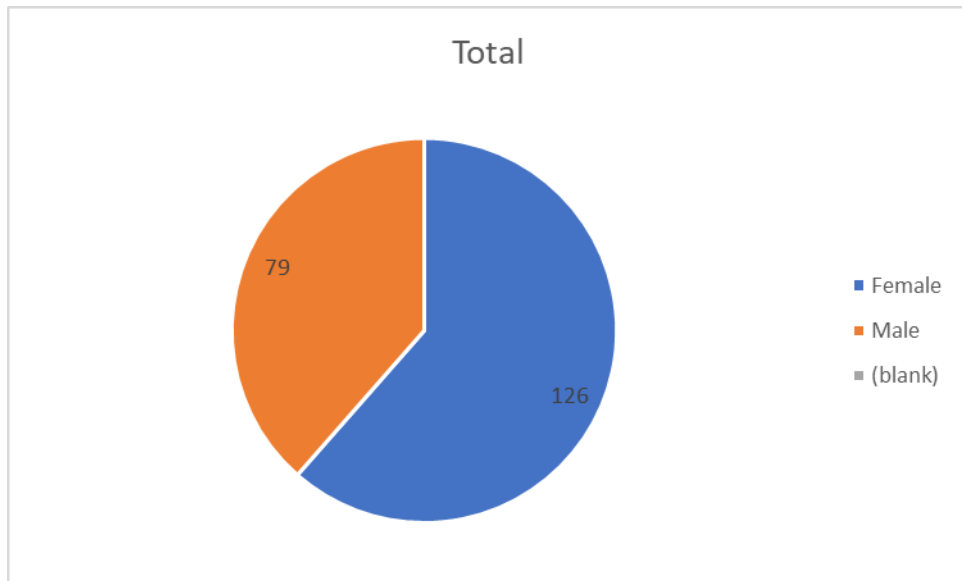


Figure 1: Confirmed cases by gender from 3/2/2020 to present

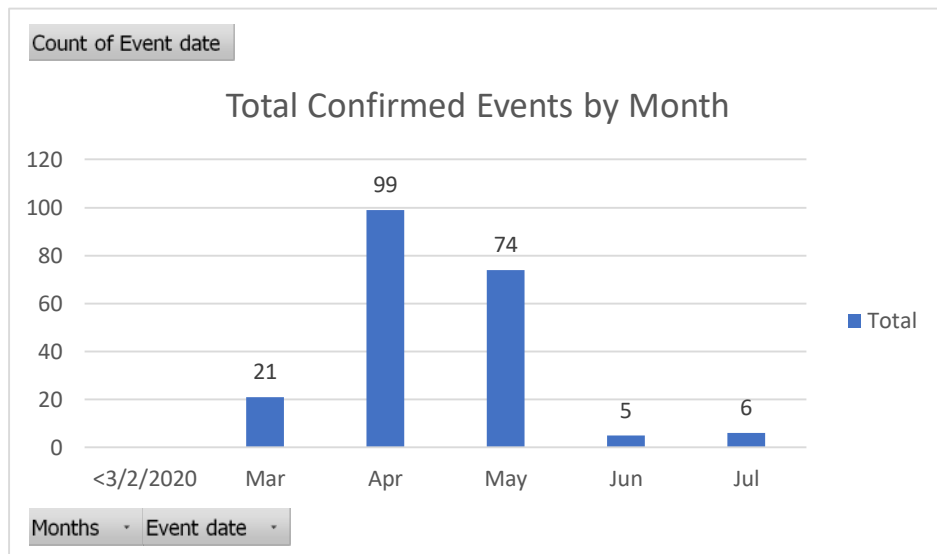


Figure 2: Confirmed cases by month from 3/2/2020 to present

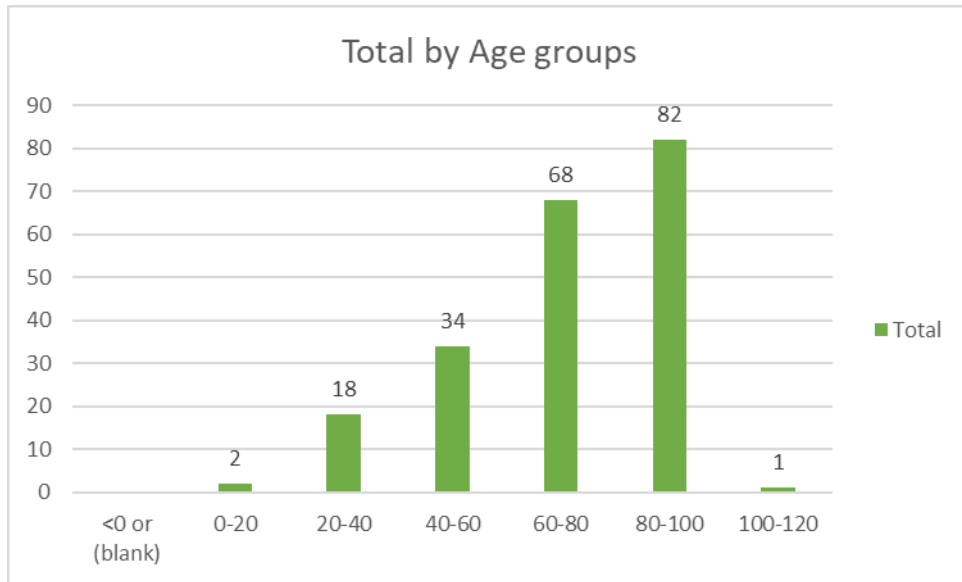
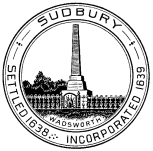


Figure 3: Age distribution of confirmed cases from 3/2/2020 to present



**Sudbury Health Dept. Weekly COVID-19 Report as of July 27, 2020**

The Sudbury Health Department is actively monitoring the status of the COVID-19 pandemic among Sudbury residents. The reporting structure below is designed to balance the privacy of affected residents, while keeping the public informed about COVID-19 activity among Sudbury residents on a weekly basis. The frequency and format are subject to change. It is important to understand that these numbers DO NOT include positive cases among non-residents, who work in Sudbury ONLY THOSE who LIVE IN SUDBURY.

**Table 1. Distribution of confirmed and clinically diagnosed cases in Sudbury**

COVID-19 Diagnosis	Total Cases	New Cases	Active cases	Recovered/off quarantine
Confirmed* COVID-19	203	5	4	166
Probable** COVID-19	27	3	3	22
Contacts***	117	1	4	113

\*Confirmed cases are individuals who had a positive lab test.

\*\*Probable cases are individuals, who had positive antibody testing and/or were clinically diagnosed with COVID-19 because of symptoms and confirmation of close contact with COVID-19, but were not lab tested. Probable cases may also include individuals whose death certificate listed COVID-19 as a cause of death, who were not lab tested.

\*\*\*Contacts are people who were exposed to a positive case and were quarantined (exposed but no illness).

**Table 2. COVID-19 cases in the community versus long term care facilities**

Sudbury Community Cases	<b>57</b>
Long Term Care Confirmed Cases	<b>146</b>

**Table 3. COVID-19 cases by gender and age**

Female	125
Male	78
0-20	2
20-40	18
40-60	33
60-80	67
>80	83

*Please Note:* These estimates are based upon data reported by the Massachusetts Department of Public Health and change frequently. This report reflects the data available to the Sudbury Health Department on a weekly basis, ending each Monday at 12 midnight.

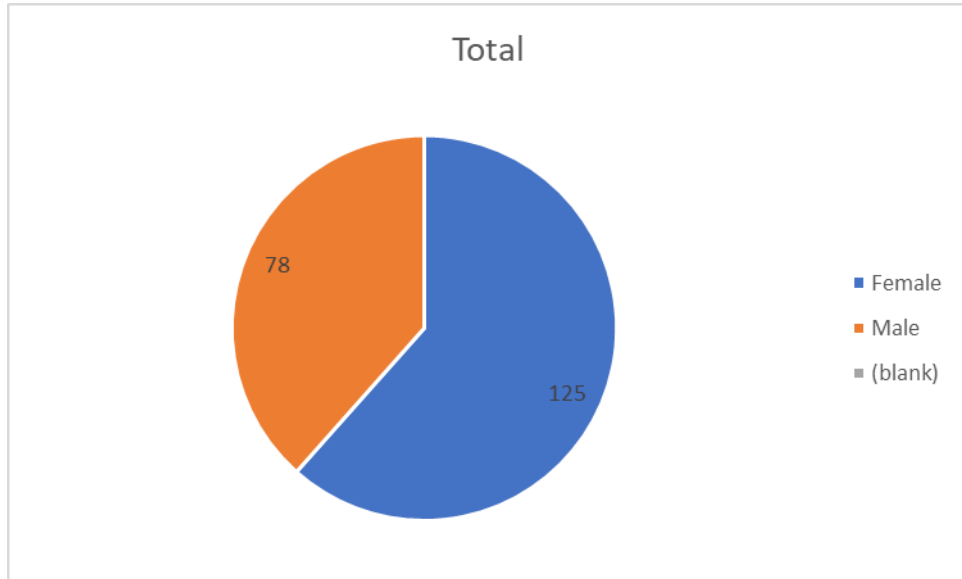


Figure 1: Confirmed cases by gender from 3/2/2020 to present

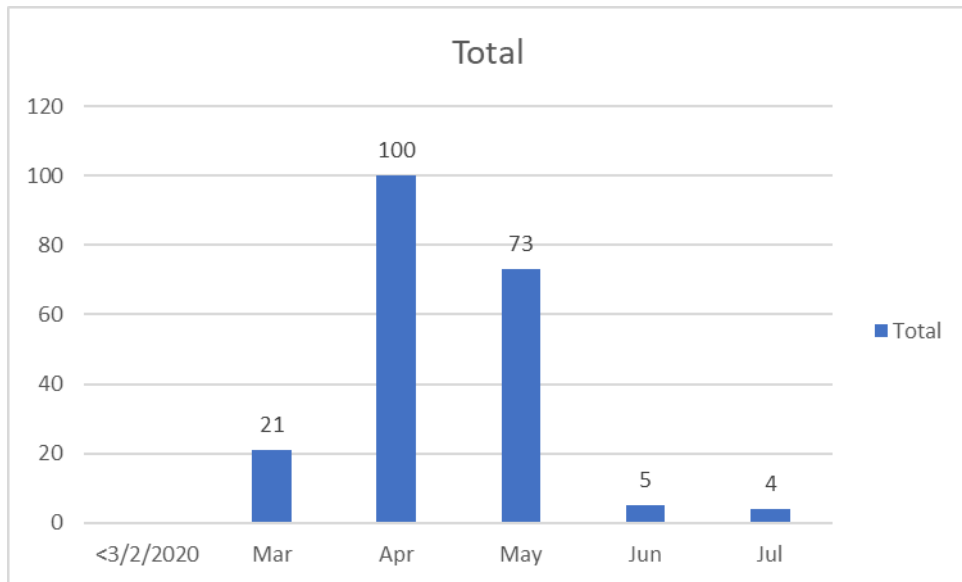


Figure 2: Confirmed cases by month from 3/2/2020 to present

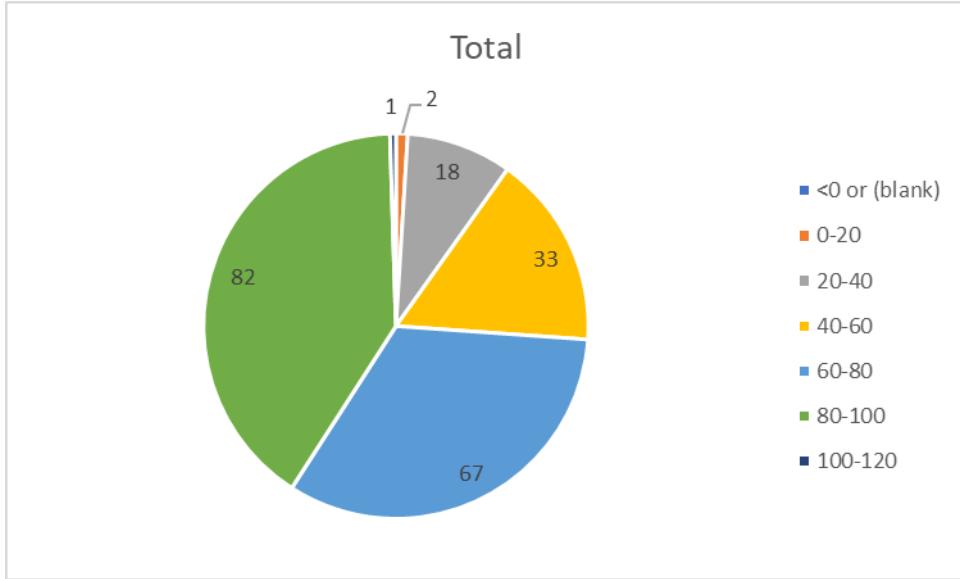
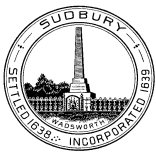


Figure 3: Age distribution of confirmed cases from 3/2/2020 to present



### Sudbury Health Dept. Weekly COVID-19 Report as of July 20, 2020

The Sudbury Health Department is actively monitoring the status of the COVID-19 pandemic among Sudbury residents. The reporting structure below is designed to balance the privacy of affected residents, while keeping the public informed about COVID-19 activity among Sudbury residents on a weekly basis. The frequency and format are subject to change. It is important to understand that these numbers DO NOT include positive cases among non-residents, who work in Sudbury ONLY THOSE who LIVE IN SUDBURY.

**Table 1. Distribution of confirmed and clinically diagnosed cases in Sudbury**

COVID-19 Diagnosis	Total Cases	New Cases	Active cases	Recovered/off quarantine
Confirmed* COVID-19	198	0	1	164
Probable** COVID-19	24	3	1	21
Contacts***	116	9	2	114

\*Confirmed cases are individuals who had a positive lab test.

\*\*Probable cases are individuals, who had positive antibody testing and/or were clinically diagnosed with COVID-19 because of symptoms and confirmation of close contact with COVID-19, but were not lab tested. Probable cases may also include individuals whose death certificate listed COVID-19 as a cause of death, who were not lab tested.

\*\*\*Contacts are people who were exposed to a positive case and were quarantined (exposed but no illness).

**Table 2. COVID-19 cases in the community versus long term care facilities**

Sudbury Community Cases	<b>54</b>
Long Term Care Confirmed Cases	<b>144</b>

**Table 3. COVID-19 cases by gender and age**

Female	122
Male	76
0-20	2
20-40	17
40-60	31
60-80	66
>80	82

*Please Note:* These estimates are based upon data reported by the Massachusetts Department of Public Health and change frequently. This report reflects the data available to the Sudbury Health Department on a weekly basis, ending each Monday at 12 midnight.



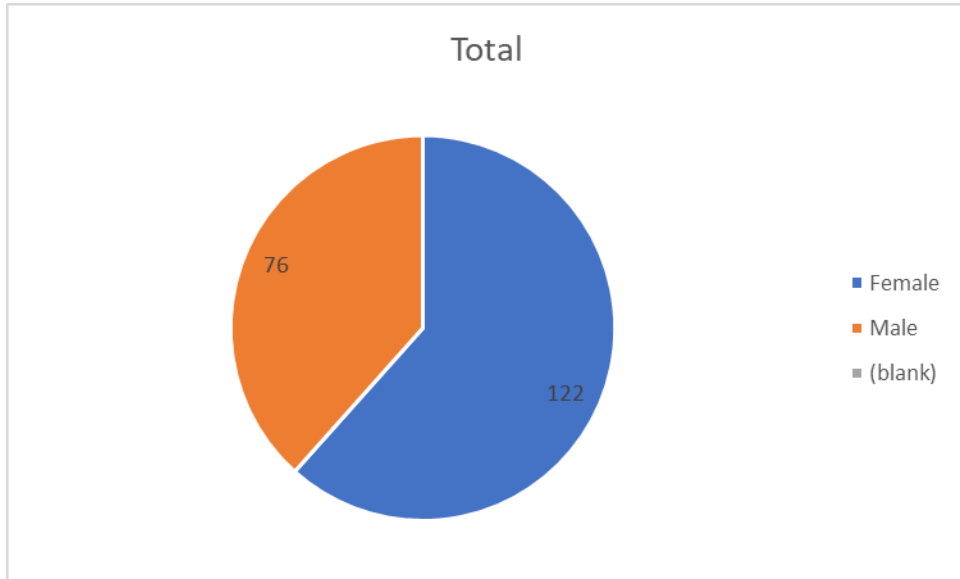


Figure 1: Confirmed cases by gender from 3/2/2020 to present

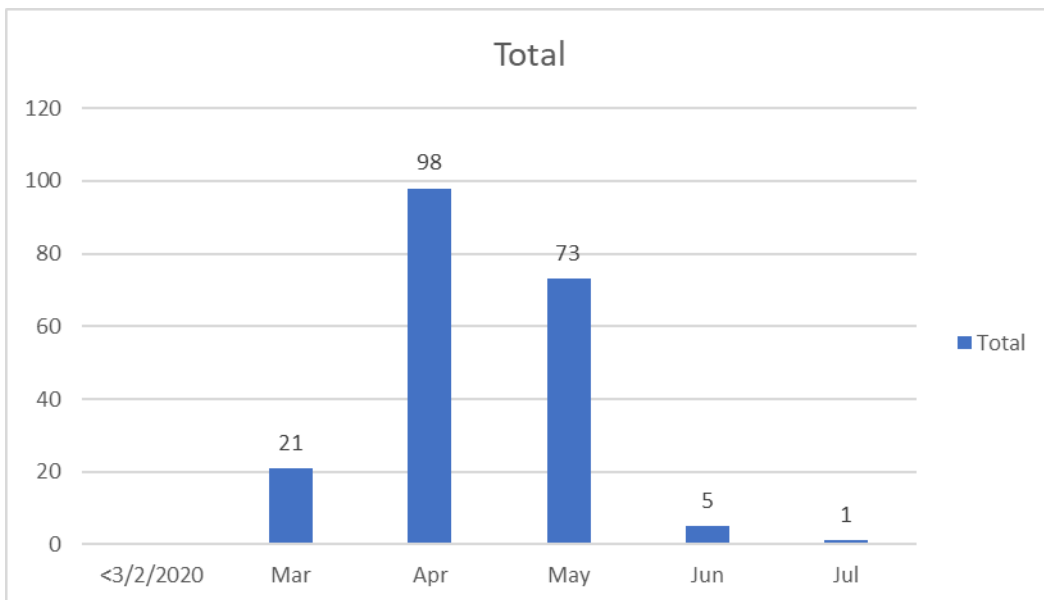


Figure 2: Confirmed cases by month from 3/2/2020 to present

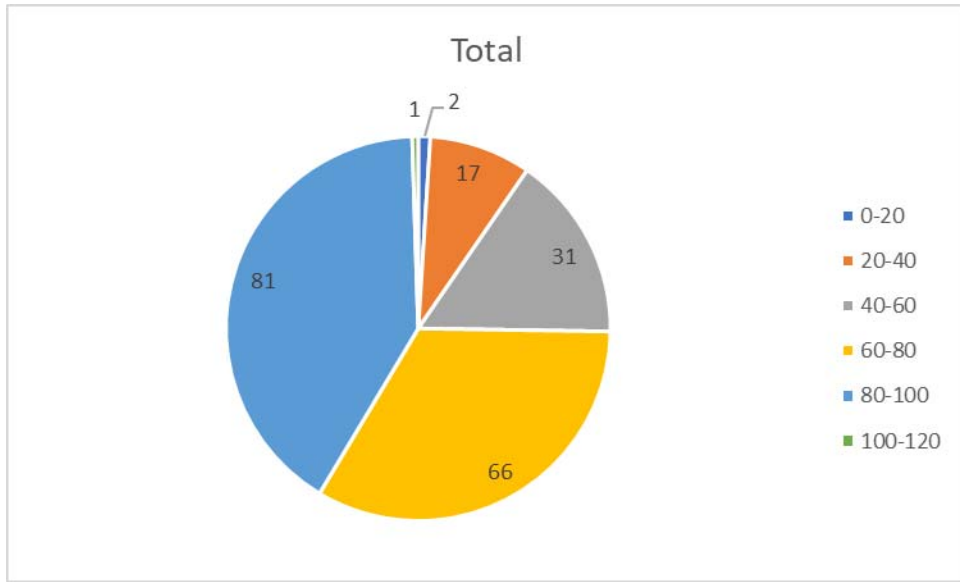
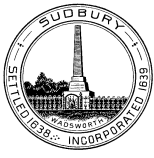


Figure 3: Age distribution of confirmed cases from 3/2/2020 to present



## Sudbury Health Dept. Weekly COVID-19 Report as of July 13, 2020

The Sudbury Health Department is actively monitoring the status of the COVID-19 pandemic among Sudbury residents. The reporting structure below is designed to balance the privacy of affected residents, while keeping the public informed about COVID-19 activity among Sudbury residents on a weekly basis. The frequency and format are subject to change. It is important to understand that these numbers DO NOT include positive cases among non-residents, who work in Sudbury ONLY THOSE who LIVE IN SUDBURY.

**Table 1. Distribution of confirmed and clinically diagnosed cases in Sudbury**

COVID-19 Diagnosis	Total Cases	New Cases	Active cases	Recovered/off quarantine
Confirmed* COVID-19	198	1	1	164
Probable** COVID-19	21	2	0	21
Contacts***	108	4	4	104

\*Confirmed cases are individuals who had a positive lab test.

\*\*Probable cases are individuals, who had positive antibody testing and/or were clinically diagnosed with COVID-19 because of symptoms and confirmation of close contact with COVID-19, but were not lab tested. Probable cases may also include individuals whose death certificate listed COVID-19 as a cause of death, who were not lab tested.

\*\*\*Contacts are people who were exposed to a positive case and were quarantined (exposed but no illness).

**Table 2. COVID-19 cases in the community versus long term care facilities**

Sudbury Community Cases	<b>54</b>
Long Term Care Confirmed Cases	<b>144</b>

**Table 3. COVID-19 cases by gender and age**

Female	122
Male	76
0-20	2
20-40	17
40-60	31
60-80	66
>80	82

*Please Note:* These estimates are based upon data reported by the Massachusetts Department of Public Health and change frequently. This report reflects the data available to the Sudbury Health Department on a weekly basis, ending each Monday at 12 midnight.

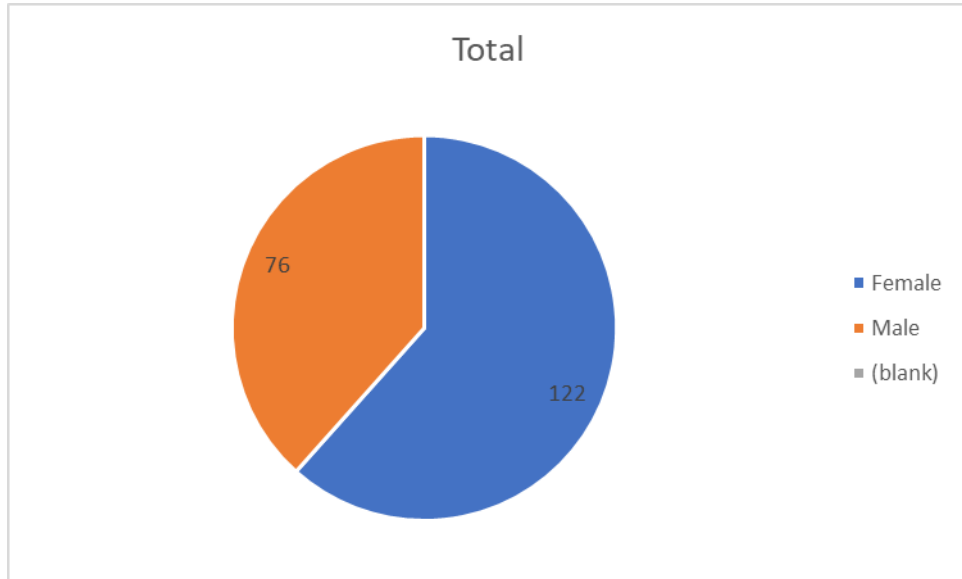


Figure 1: Confirmed cases by gender from 3/2/2020 to present

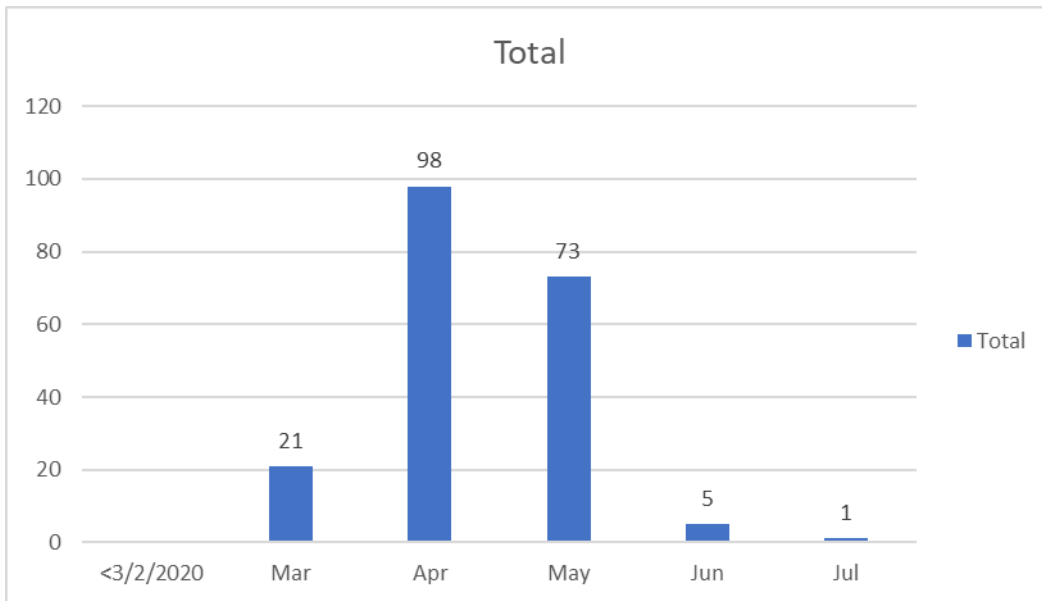


Figure 2: Confirmed cases by month from 3/2/2020 to present

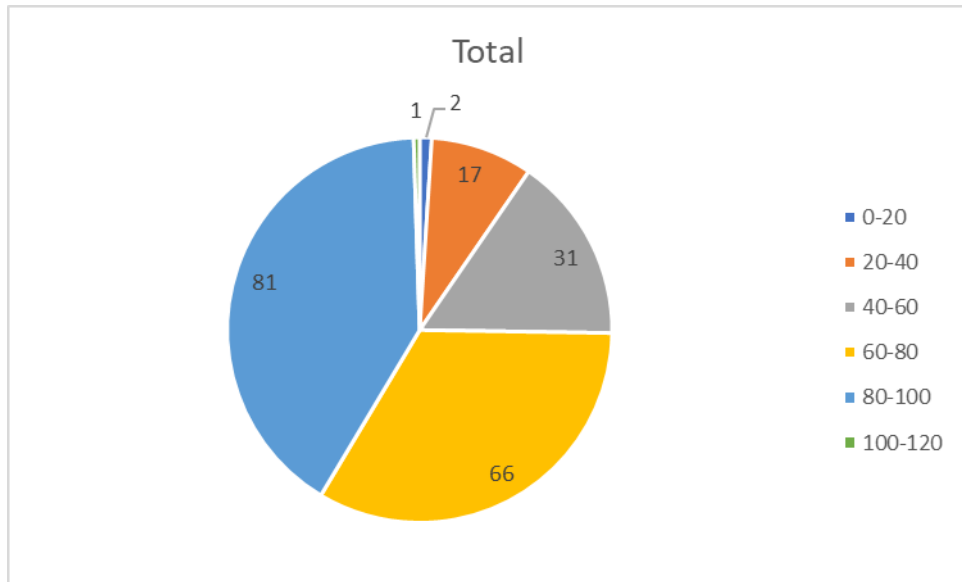
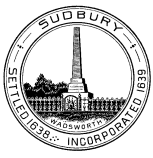


Figure 3: Age distribution of confirmed cases from 3/2/2020 to present



## Board of Health

### Sudbury Health Dept. Weekly COVID-19 Report as of July 6, 2020

The Sudbury Health Department is actively monitoring the status of the COVID-19 pandemic among Sudbury residents. The reporting structure below is designed to balance the privacy of affected residents, while keeping the public informed about COVID-19 activity among Sudbury residents on a weekly basis. The frequency and format are subject to change. It is important to understand that these numbers DO NOT include positive cases among non-residents, who work in Sudbury ONLY THOSE who LIVE IN SUDBURY.

**Table 1. Distribution of confirmed and clinically diagnosed cases in Sudbury**

COVID-19 Diagnosis	Total Cases	New Cases	Active cases	Recovered/off quarantine
Confirmed* COVID-19	197	1	6	158
Probable** COVID-19	19	1	0	17
Contacts***	104	3	1	103

\*Confirmed cases are individuals who had a positive lab test.

\*\*Probable cases are individuals, who had positive antibody testing and/or were clinically diagnosed with COVID-19 because of symptoms and confirmation of close contact with COVID-19, but were not lab tested. Probable cases may also include individuals whose death certificate listed COVID-19 as a cause of death, who were not lab tested.

\*\*\*Contacts are people who were exposed to a positive case and were quarantined (exposed but no illness).

**Table 2. COVID-19 cases in the community versus long term care facilities**

Sudbury Community Cases	<b>53</b>
Long Term Care Confirmed Cases	<b>144</b>

**Table 3. COVID-19 cases by gender and age**

Female	121
Male	76
0-20	2
20-40	17
40-60	30
60-80	66
>80	82

*Please Note:* These estimates are based upon data reported by the Massachusetts Department of Public Health and change frequently. This report reflects the data available to the Sudbury Health Department on a weekly basis, ending each Monday at 12 midnight.

**Analysis of Confirmed Cases**

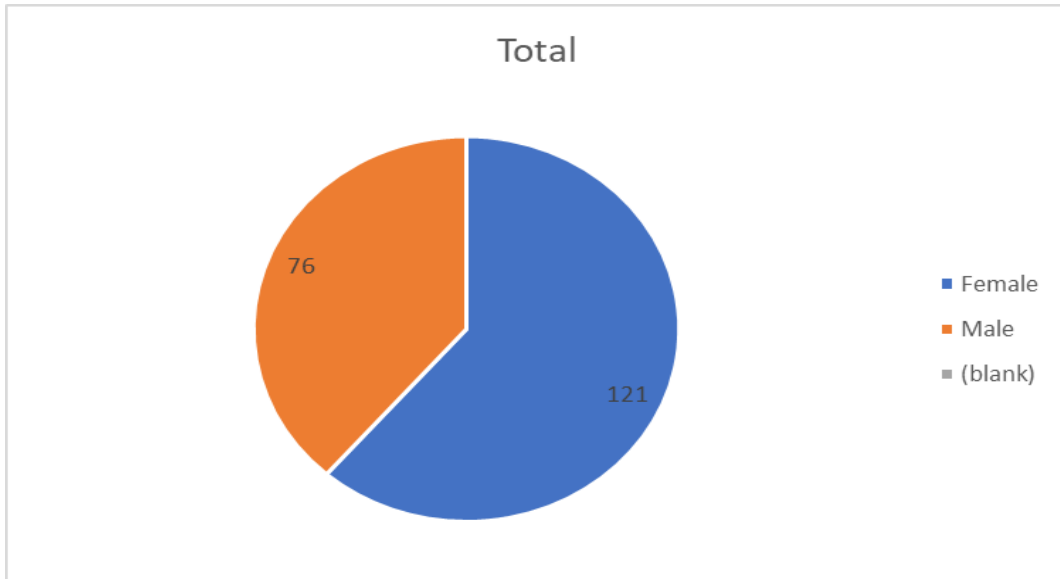


Figure 1: Confirmed cases by gender from 3/2/2020 to present

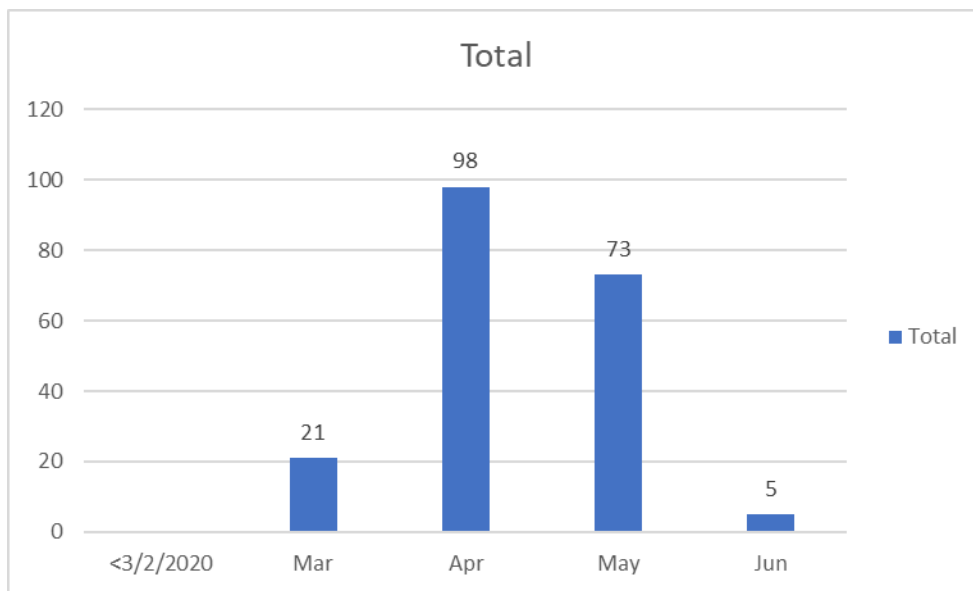


Figure 2: Confirmed cases by month from 3/2/2020 to present

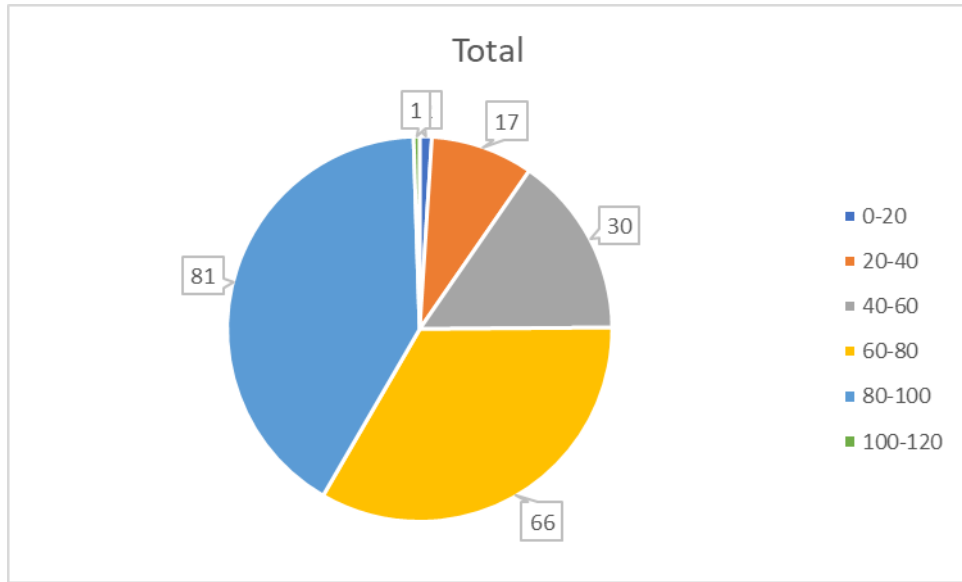


Figure 3: Age distribution of confirmed cases from 3/2/2020 to present