

Sudbury Health Dept. Weekly COVID-19 Report as of August 17, 2020

The Sudbury Health Department is actively monitoring the status of the COVID-19 pandemic among Sudbury residents. The reporting structure below is designed to balance the privacy of affected residents, while keeping the public informed about COVID-19 activity among Sudbury residents on a weekly basis. The frequency and format are subject to change. It is important to understand that these numbers DO NOT include positive cases among non-residents, who work in Sudbury ONLY THOSE who LIVE IN SUDBURY.

Table 1. Distribution of confirmed and clinically diagnosed cases in Sudbury

COVID-19 Diagnosis	Total Cases	New Cases	Active cases	Recovered/off quarantine
Confirmed* COVID-19	210	2	6	169
Probable** COVID-19	36	6	0	33
Contacts***	125	3	7	118

*Confirmed cases are individuals who had a positive lab test.

**Probable cases are individuals, who had positive antibody testing and/or were clinically diagnosed with COVID-19 because of symptoms and confirmation of close contact with COVID-19, but were not lab tested. Probable cases may also include individuals whose death certificate listed COVID-19 as a cause of death, who were not lab tested.

***Contacts are people who were exposed to a positive case and were quarantined (exposed but no illness).

Table 2. COVID-19 cases in the community versus long term care facilities

Sudbury Community Cases	65
Long Term Care Confirmed Cases	145

Table 3. COVID-19 cases by gender and age

Female	126
Male	84
0-20	3
20-40	19
40-60	36
60-80	69
>80	83

Please Note: These estimates are based upon data reported by the Massachusetts Department of Public Health and change frequently. This report reflects the data available to the Sudbury Health Department on a weekly basis, ending each Monday at 12 midnight.

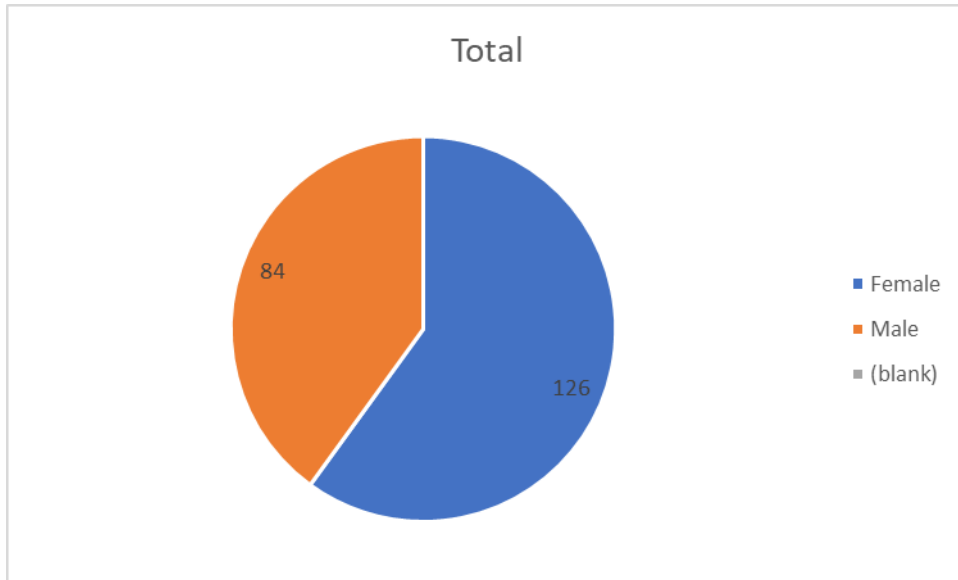


Figure 1: Confirmed cases by gender from 3/2/2020 to present

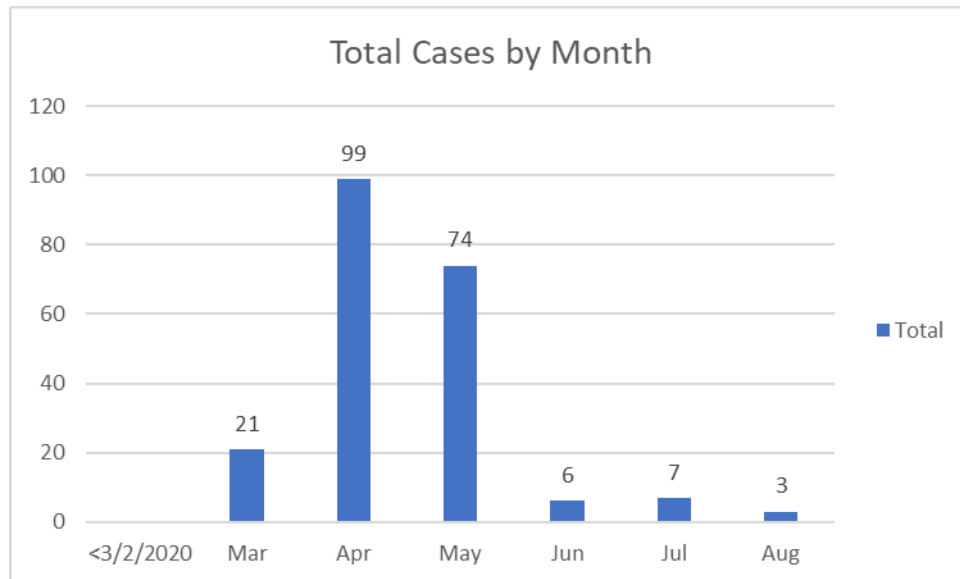


Figure 2: Confirmed cases by month from 3/2/2020 to present

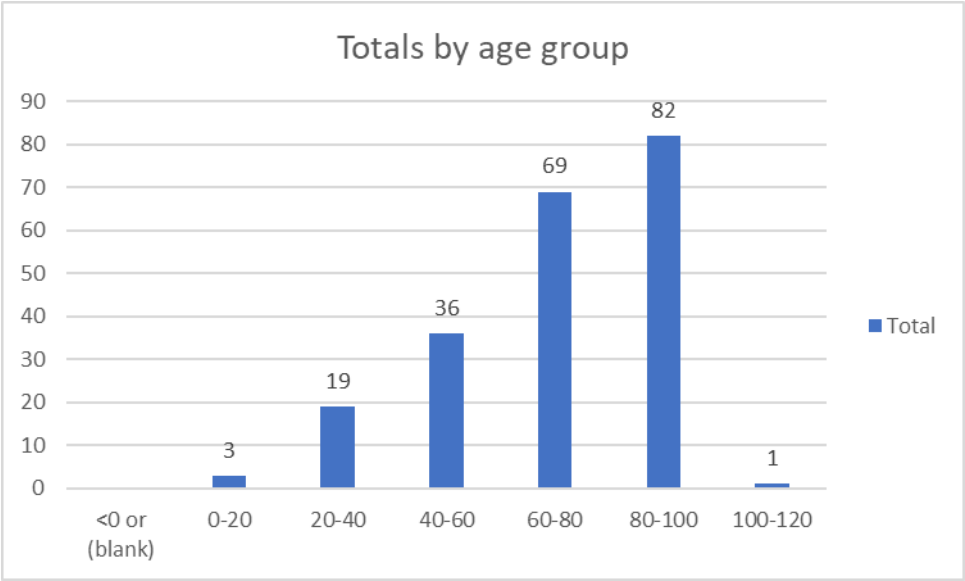
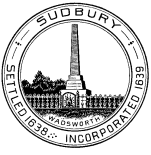


Figure 3: Age distribution of confirmed cases from 3/2/2020 to present



Town of Sudbury

Board of Health

Sudbury Health Department
275 Old Lancaster Road
Sudbury, MA 01776

Sudbury Health Dept. Weekly COVID-19 Report as of August 10, 2020

The Sudbury Health Department is actively monitoring the status of the COVID-19 pandemic among Sudbury residents. The reporting structure below is designed to balance the privacy of affected residents, while keeping the public informed about COVID-19 activity among Sudbury residents on a weekly basis. The frequency and format are subject to change. It is important to understand that these numbers DO NOT include positive cases among non-residents, who work in Sudbury ONLY THOSE who LIVE IN SUDBURY.

Table 1. Distribution of confirmed and clinically diagnosed cases in Sudbury

COVID-19 Diagnosis	Total Cases	New Cases	Active cases	Recovered/off quarantine
Confirmed* COVID-19	208	3	5	168
Probable** COVID-19	30	0	1	27
Contacts***	122	4	5	117

*Confirmed cases are individuals who had a positive lab test.

**Probable cases are individuals, who had positive antibody testing and/or were clinically diagnosed with COVID-19 because of symptoms and confirmation of close contact with COVID-19, but were not lab tested. Probable cases may also include individuals whose death certificate listed COVID-19 as a cause of death, who were not lab tested.

***Contacts are people who were exposed to a positive case and were quarantined (exposed but no illness).

Table 2. COVID-19 cases in the community versus long term care facilities

Sudbury Community Cases	63
Long Term Care Confirmed Cases	145

Table 3. COVID-19 cases by gender and age

Female	126
Male	82
0-20	2
20-40	19
40-60	35
60-80	69
>80	83

Please Note: These estimates are based upon data reported by the Massachusetts Department of Public Health and change frequently. This report reflects the data available to the Sudbury Health Department on a weekly basis, ending each Monday at 12 midnight.

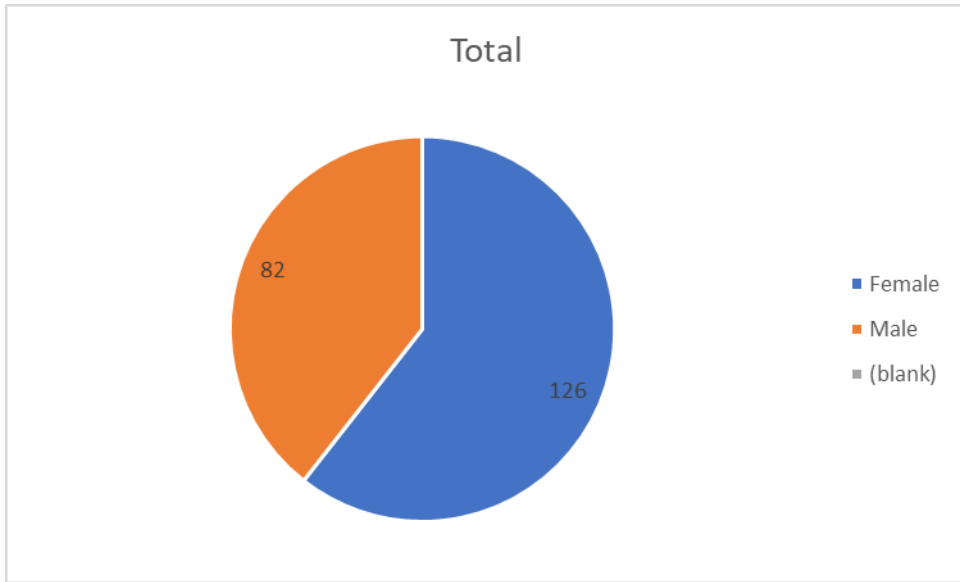


Figure 1: Confirmed cases by gender from 3/2/2020 to present

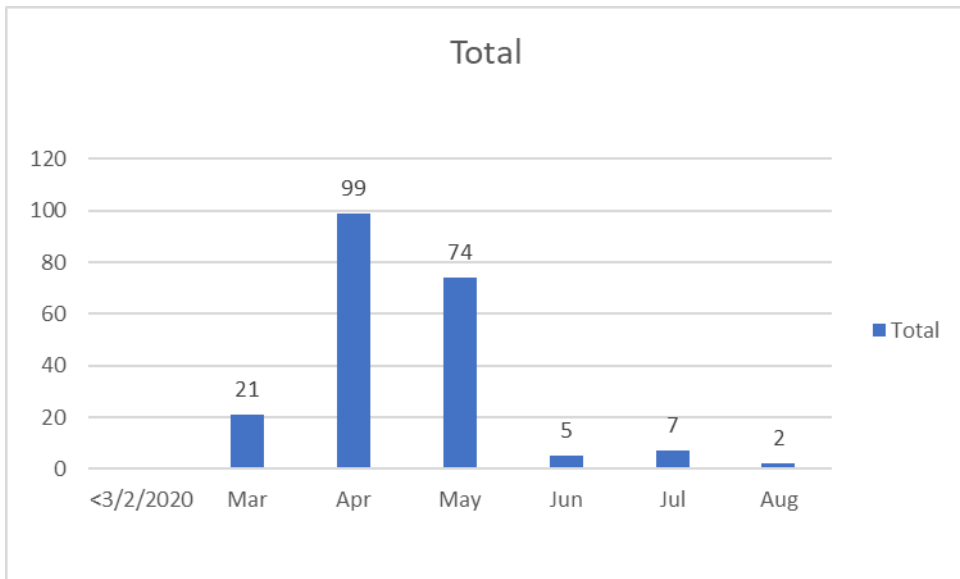


Figure 2: Confirmed cases by month from 3/2/2020 to present

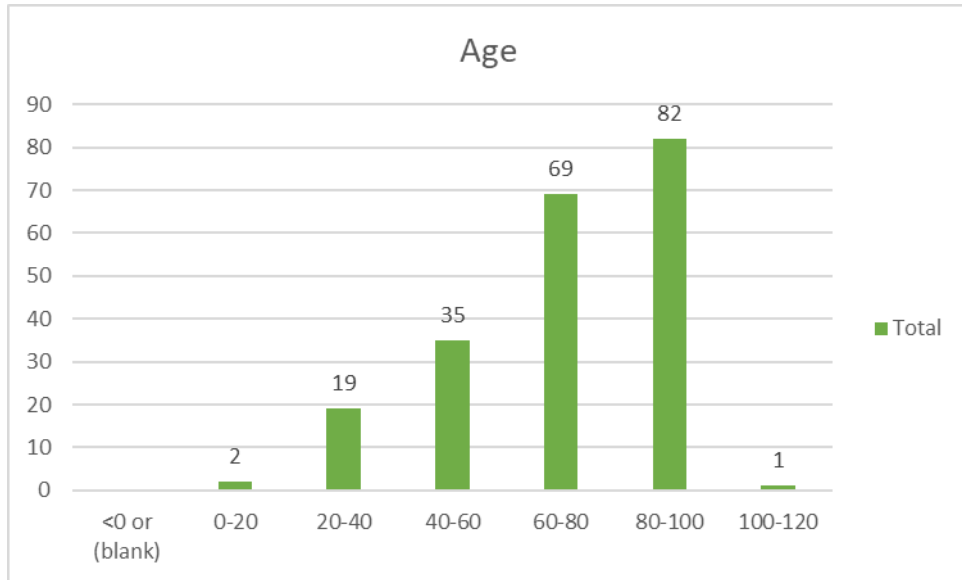
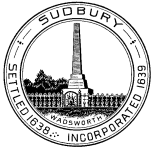


Figure 3: Age distribution of confirmed cases from 3/2/2020 to present



Sudbury Health Dept. Weekly COVID-19 Report as of August 3, 2020

The Sudbury Health Department is actively monitoring the status of the COVID-19 pandemic among Sudbury residents. The reporting structure below is designed to balance the privacy of affected residents, while keeping the public informed about COVID-19 activity among Sudbury residents on a weekly basis. The frequency and format are subject to change. It is important to understand that these numbers DO NOT include positive cases among non-residents, who work in Sudbury ONLY THOSE who LIVE IN SUDBURY.

Table 1. Distribution of confirmed and clinically diagnosed cases in Sudbury

COVID-19 Diagnosis	Total Cases	New Cases	Active cases	Recovered/off quarantine
Confirmed* COVID-19	205	2	6	164
Probable** COVID-19	30	3	1	27
Contacts***	118	1	1	117

*Confirmed cases are individuals who had a positive lab test.

**Probable cases are individuals, who had positive antibody testing and/or were clinically diagnosed with COVID-19 because of symptoms and confirmation of close contact with COVID-19, but were not lab tested. Probable cases may also include individuals whose death certificate listed COVID-19 as a cause of death, who were not lab tested.

***Contacts are people who were exposed to a positive case and were quarantined (exposed but no illness).

Table 2. COVID-19 cases in the community versus long term care facilities

Sudbury Community Cases	59
Long Term Care Confirmed Cases	146

Table 3. COVID-19 cases by gender and age

Female	126
Male	79
0-20	2
20-40	18
40-60	34
60-80	68
>80	83

Please Note: These estimates are based upon data reported by the Massachusetts Department of Public Health and change frequently. This report reflects the data available to the Sudbury Health Department on a weekly basis, ending each Monday at 12 midnight.

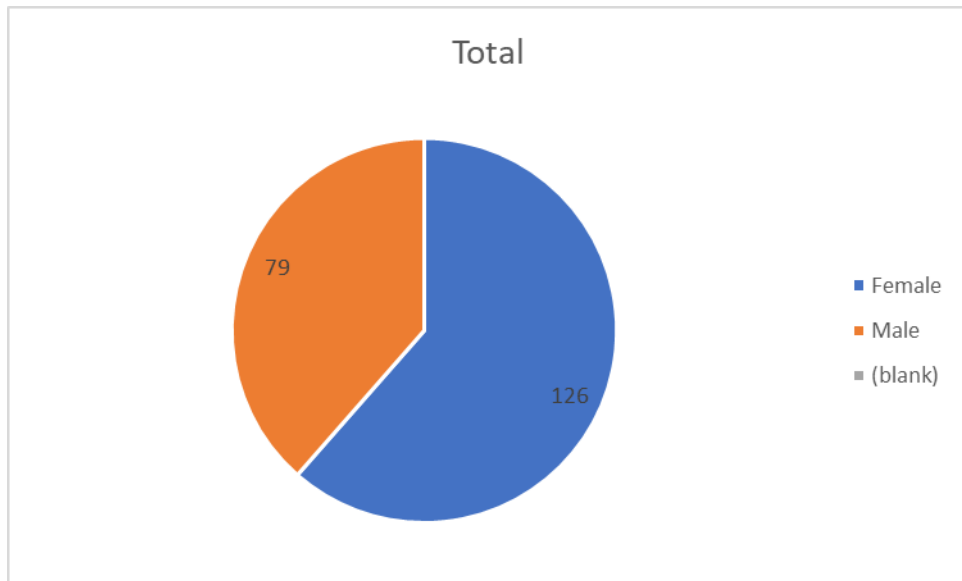


Figure 1: Confirmed cases by gender from 3/2/2020 to present

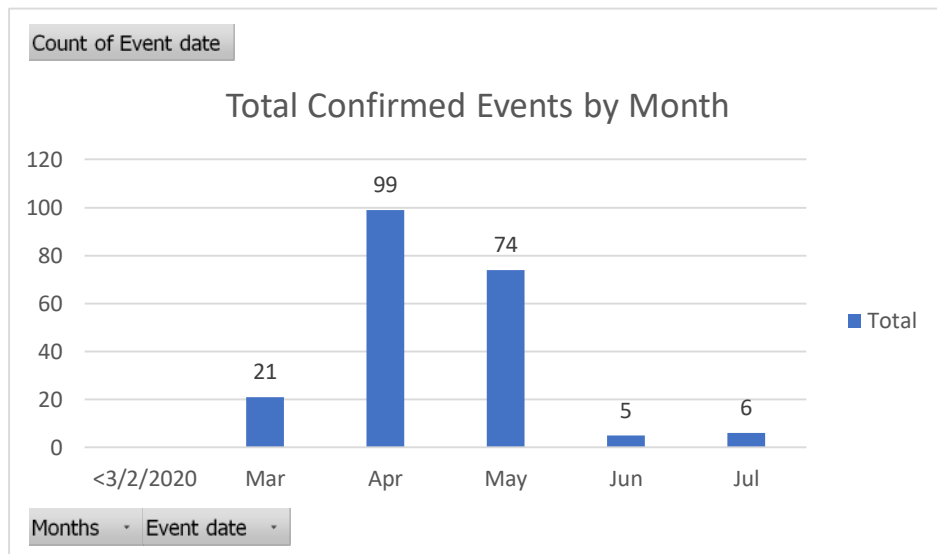


Figure 2: Confirmed cases by month from 3/2/2020 to present

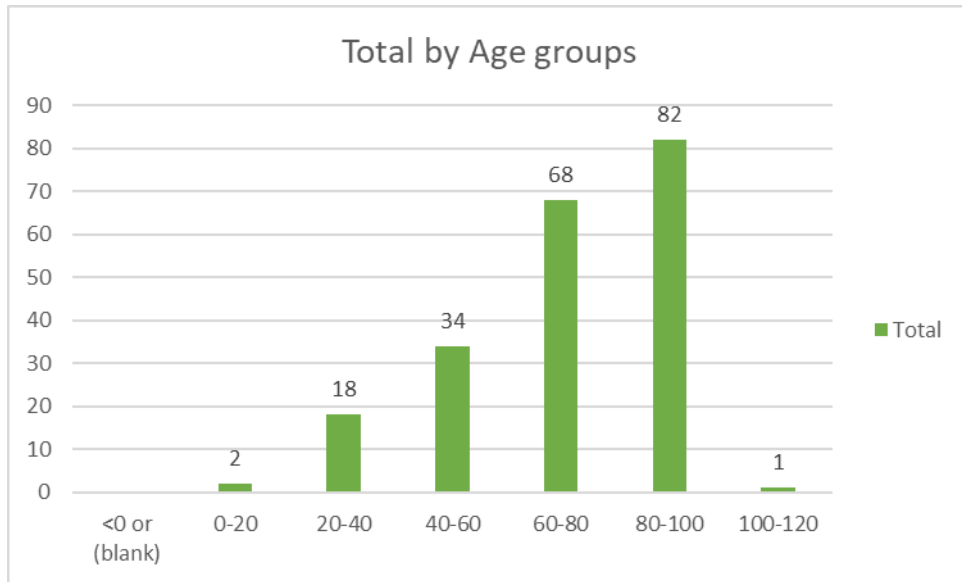
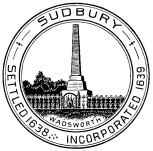


Figure 3: Age distribution of confirmed cases from 3/2/2020 to present



Sudbury Health Dept. Weekly COVID-19 Report as of July 27, 2020

The Sudbury Health Department is actively monitoring the status of the COVID-19 pandemic among Sudbury residents. The reporting structure below is designed to balance the privacy of affected residents, while keeping the public informed about COVID-19 activity among Sudbury residents on a weekly basis. The frequency and format are subject to change. It is important to understand that these numbers DO NOT include positive cases among non-residents, who work in Sudbury ONLY THOSE who LIVE IN SUDBURY.

Table 1. Distribution of confirmed and clinically diagnosed cases in Sudbury

COVID-19 Diagnosis	Total Cases	New Cases	Active cases	Recovered/off quarantine
Confirmed* COVID-19	203	5	4	166
Probable** COVID-19	27	3	3	22
Contacts***	117	1	4	113

*Confirmed cases are individuals who had a positive lab test.

**Probable cases are individuals, who had positive antibody testing and/or were clinically diagnosed with COVID-19 because of symptoms and confirmation of close contact with COVID-19, but were not lab tested. Probable cases may also include individuals whose death certificate listed COVID-19 as a cause of death, who were not lab tested.

***Contacts are people who were exposed to a positive case and were quarantined (exposed but no illness).

Table 2. COVID-19 cases in the community versus long term care facilities

Sudbury Community Cases	57
Long Term Care Confirmed Cases	146

Table 3. COVID-19 cases by gender and age

Female	125
Male	78
0-20	2
20-40	18
40-60	33
60-80	67
>80	83

Please Note: These estimates are based upon data reported by the Massachusetts Department of Public Health and change frequently. This report reflects the data available to the Sudbury Health Department on a weekly basis, ending each Monday at 12 midnight.

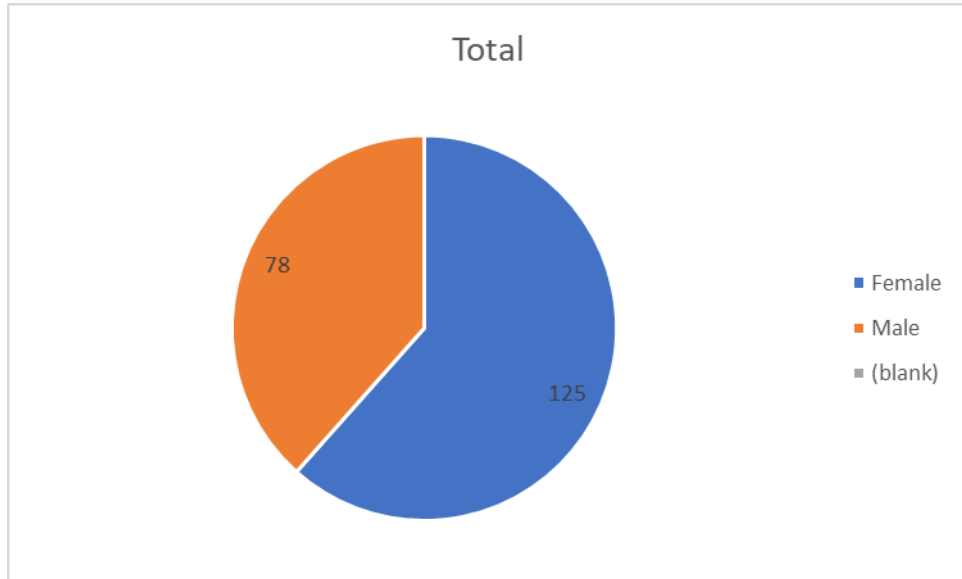


Figure 1: Confirmed cases by gender from 3/2/2020 to present

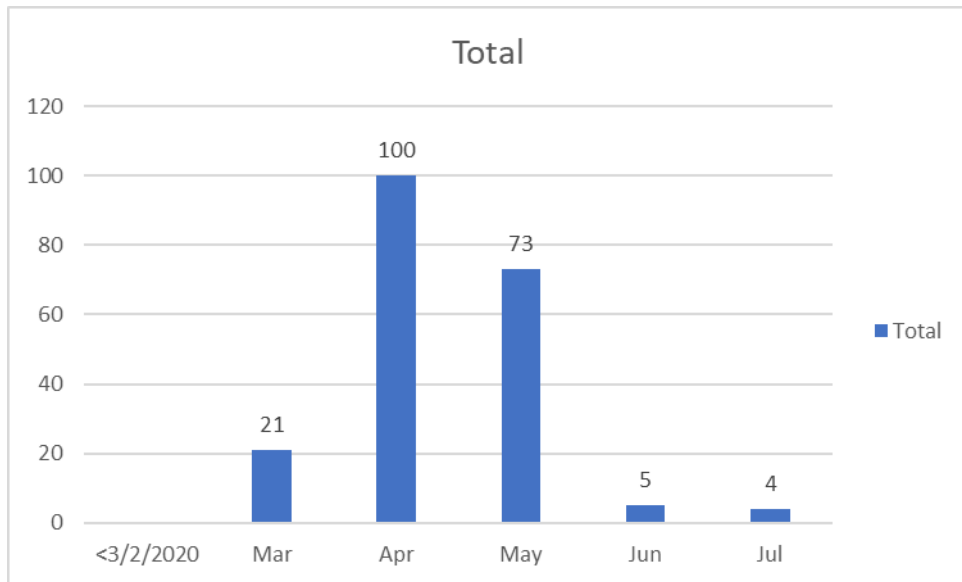


Figure 2: Confirmed cases by month from 3/2/2020 to present

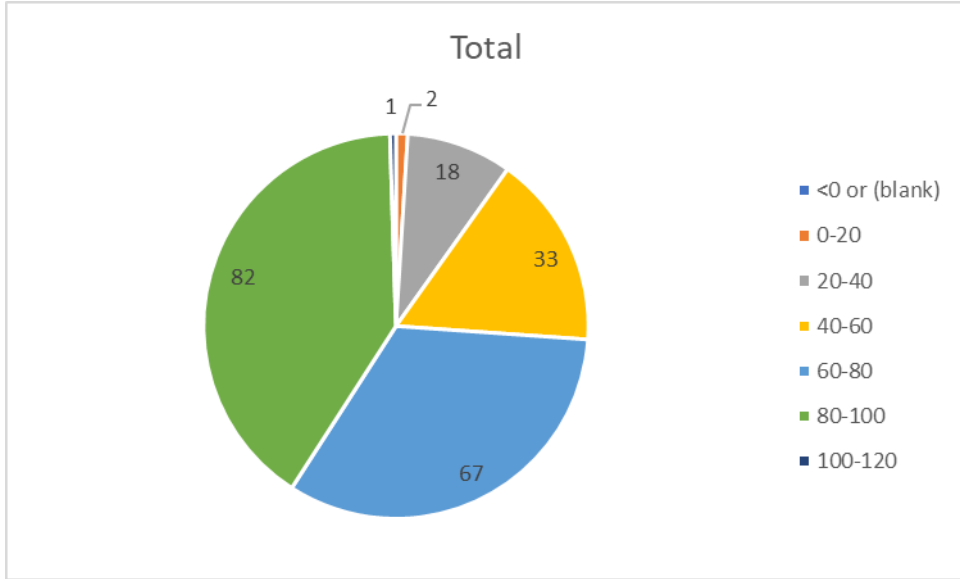
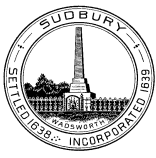


Figure 3: Age distribution of confirmed cases from 3/2/2020 to present



Sudbury Health Dept. Weekly COVID-19 Report as of July 20, 2020

The Sudbury Health Department is actively monitoring the status of the COVID-19 pandemic among Sudbury residents. The reporting structure below is designed to balance the privacy of affected residents, while keeping the public informed about COVID-19 activity among Sudbury residents on a weekly basis. The frequency and format are subject to change. It is important to understand that these numbers DO NOT include positive cases among non-residents, who work in Sudbury ONLY THOSE who LIVE IN SUDBURY.

Table 1. Distribution of confirmed and clinically diagnosed cases in Sudbury				
COVID-19 Diagnosis	Total Cases	New Cases	Active cases	Recovered/off quarantine
Confirmed* COVID-19	198	0	1	164
Probable** COVID-19	24	3	1	21
Contacts***	116	9	2	114

*Confirmed cases are individuals who had a positive lab test.

**Probable cases are individuals, who had positive antibody testing and/or were clinically diagnosed with COVID-19 because of symptoms and confirmation of close contact with COVID-19, but were not lab tested. Probable cases may also include individuals whose death certificate listed COVID-19 as a cause of death, who were not lab tested.

***Contacts are people who were exposed to a positive case and were quarantined (exposed but no illness).

Table 2. COVID-19 cases in the community versus long term care facilities	
Sudbury Community Cases	54
Long Term Care Confirmed Cases	144

Table 3. COVID-19 cases by gender and age	
Female	122
Male	76
0-20	2
20-40	17
40-60	31
60-80	66
>80	82

Please Note: These estimates are based upon data reported by the Massachusetts Department of Public Health and change frequently. This report reflects the data available to the Sudbury Health Department on a weekly basis, ending each Monday at 12 midnight.

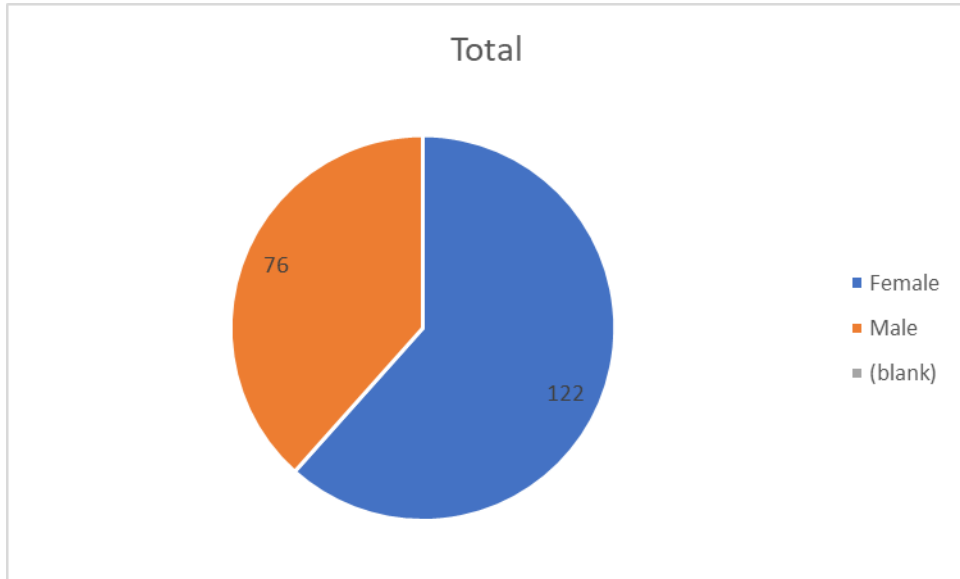


Figure 1: Confirmed cases by gender from 3/2/2020 to present

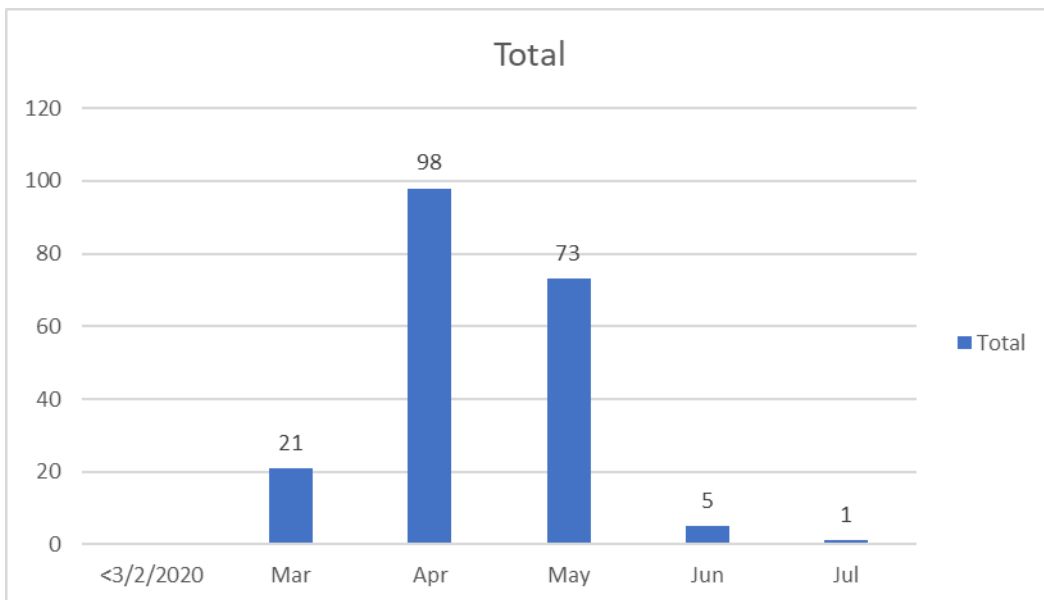


Figure 2: Confirmed cases by month from 3/2/2020 to present

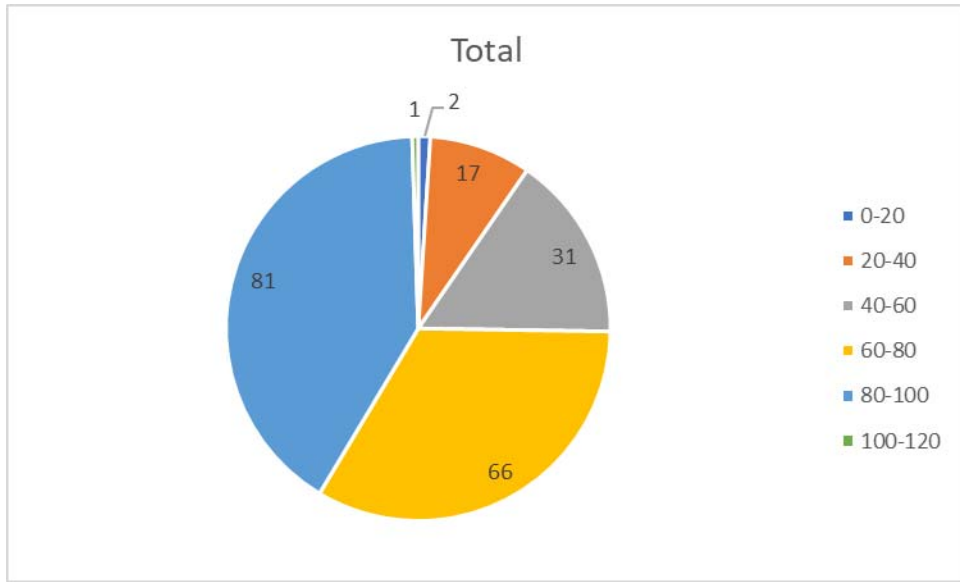
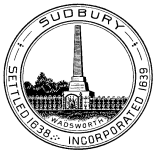


Figure 3: Age distribution of confirmed cases from 3/2/2020 to present



Sudbury Health Dept. Weekly COVID-19 Report as of July 13, 2020

The Sudbury Health Department is actively monitoring the status of the COVID-19 pandemic among Sudbury residents. The reporting structure below is designed to balance the privacy of affected residents, while keeping the public informed about COVID-19 activity among Sudbury residents on a weekly basis. The frequency and format are subject to change. It is important to understand that these numbers DO NOT include positive cases among non-residents, who work in Sudbury ONLY THOSE who LIVE IN SUDBURY.

Table 1. Distribution of confirmed and clinically diagnosed cases in Sudbury

COVID-19 Diagnosis	Total Cases	New Cases	Active cases	Recovered/off quarantine
Confirmed* COVID-19	198	1	1	164
Probable** COVID-19	21	2	0	21
Contacts***	108	4	4	104

*Confirmed cases are individuals who had a positive lab test.

**Probable cases are individuals, who had positive antibody testing and/or were clinically diagnosed with COVID-19 because of symptoms and confirmation of close contact with COVID-19, but were not lab tested. Probable cases may also include individuals whose death certificate listed COVID-19 as a cause of death, who were not lab tested.

***Contacts are people who were exposed to a positive case and were quarantined (exposed but no illness).

Table 2. COVID-19 cases in the community versus long term care facilities

Sudbury Community Cases	54
Long Term Care Confirmed Cases	144

Table 3. COVID-19 cases by gender and age

Female	122
Male	76
0-20	2
20-40	17
40-60	31
60-80	66
>80	82

Please Note: These estimates are based upon data reported by the Massachusetts Department of Public Health and change frequently. This report reflects the data available to the Sudbury Health Department on a weekly basis, ending each Monday at 12 midnight.

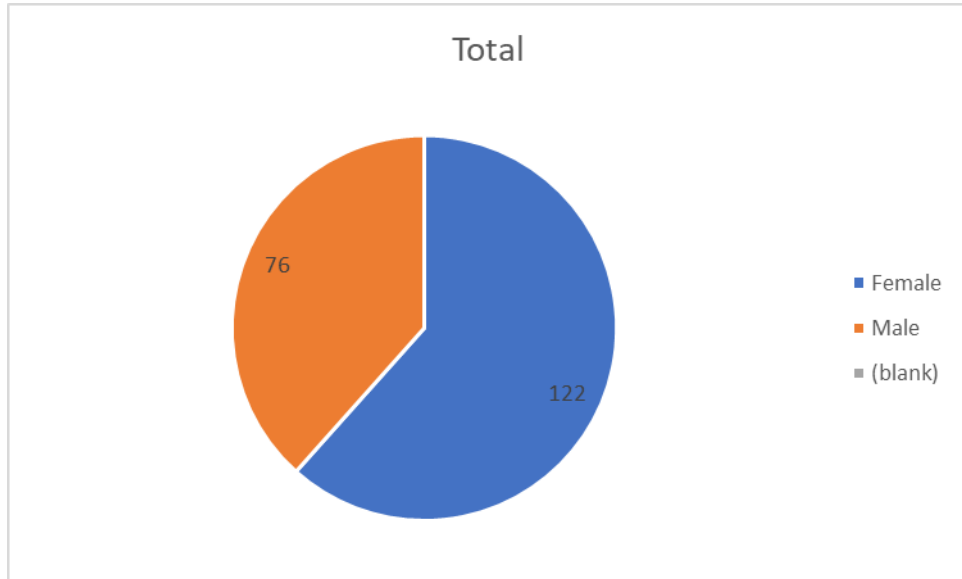


Figure 1: Confirmed cases by gender from 3/2/2020 to present

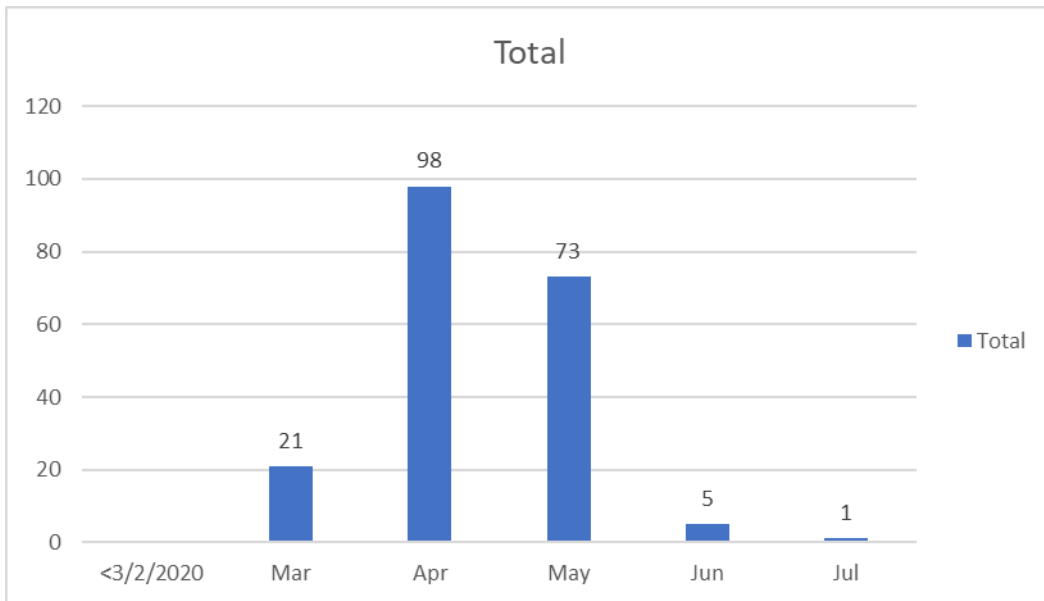


Figure 2: Confirmed cases by month from 3/2/2020 to present

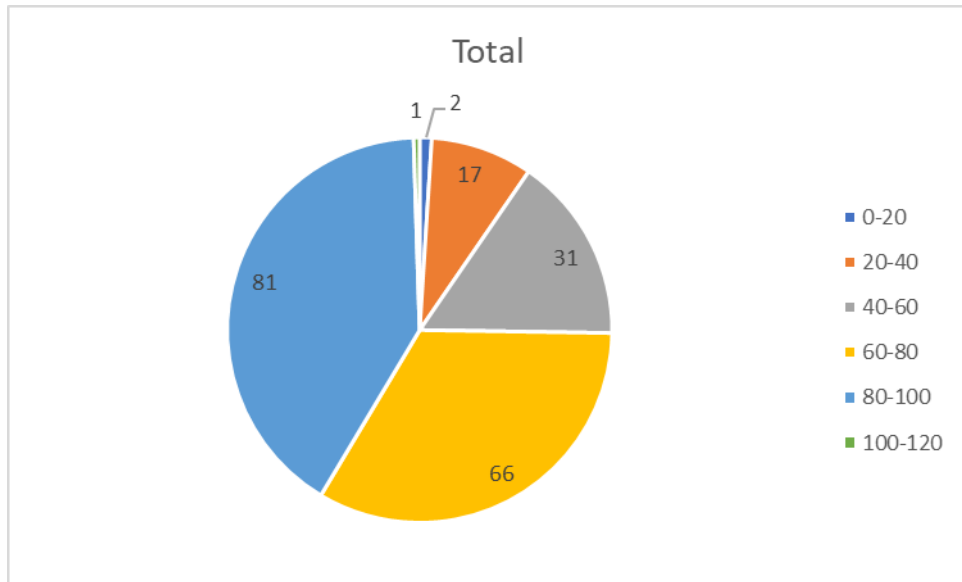
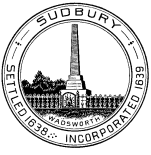


Figure 3: Age distribution of confirmed cases from 3/2/2020 to present



Board of Health

Sudbury Health Dept. Weekly COVID-19 Report as of July 6, 2020

The Sudbury Health Department is actively monitoring the status of the COVID-19 pandemic among Sudbury residents. The reporting structure below is designed to balance the privacy of affected residents, while keeping the public informed about COVID-19 activity among Sudbury residents on a weekly basis. The frequency and format are subject to change. It is important to understand that these numbers DO NOT include positive cases among non-residents, who work in Sudbury ONLY THOSE who LIVE IN SUDBURY.

Table 1. Distribution of confirmed and clinically diagnosed cases in Sudbury

COVID-19 Diagnosis	Total Cases	New Cases	Active cases	Recovered/off quarantine
Confirmed* COVID-19	197	1	6	158
Probable** COVID-19	19	1	0	17
Contacts***	104	3	1	103

*Confirmed cases are individuals who had a positive lab test.

**Probable cases are individuals, who had positive antibody testing and/or were clinically diagnosed with COVID-19 because of symptoms and confirmation of close contact with COVID-19, but were not lab tested. Probable cases may also include individuals whose death certificate listed COVID-19 as a cause of death, who were not lab tested.

***Contacts are people who were exposed to a positive case and were quarantined (exposed but no illness).

Table 2. COVID-19 cases in the community versus long term care facilities

Sudbury Community Cases	53
Long Term Care Confirmed Cases	144

Table 3. COVID-19 cases by gender and age

Female	121
Male	76
0-20	2
20-40	17
40-60	30
60-80	66
>80	82

Please Note: These estimates are based upon data reported by the Massachusetts Department of Public Health and change frequently. This report reflects the data available to the Sudbury Health Department on a weekly basis, ending each Monday at 12 midnight.

Analysis of Confirmed Cases

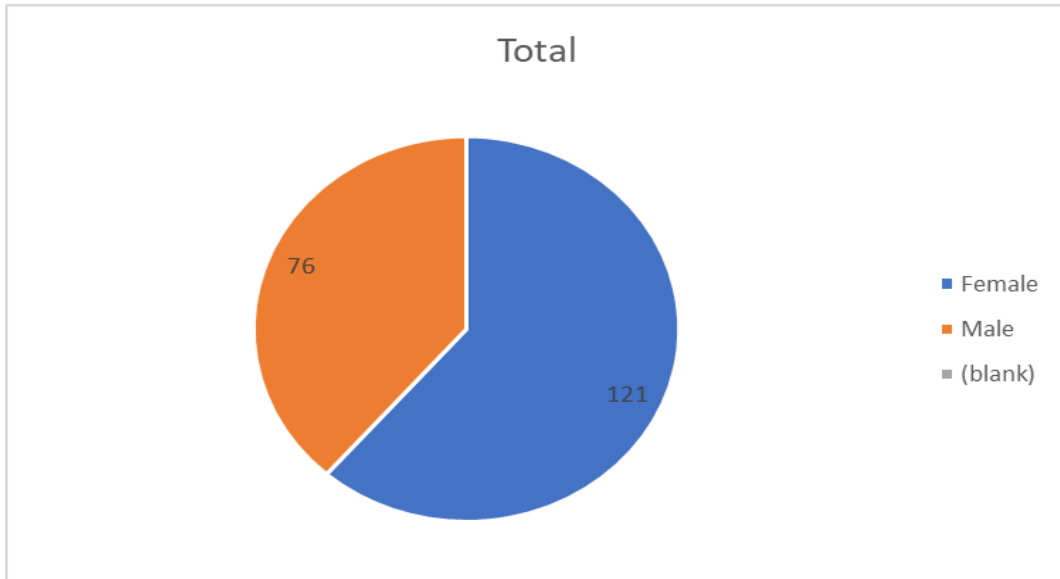


Figure 1: Confirmed cases by gender from 3/2/2020 to present

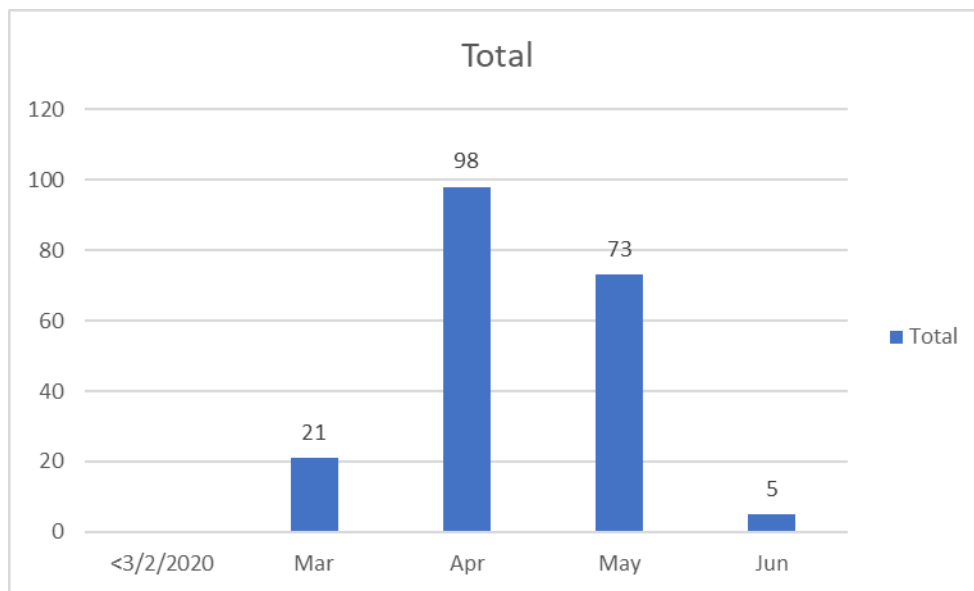


Figure 2: Confirmed cases by month from 3/2/2020 to present

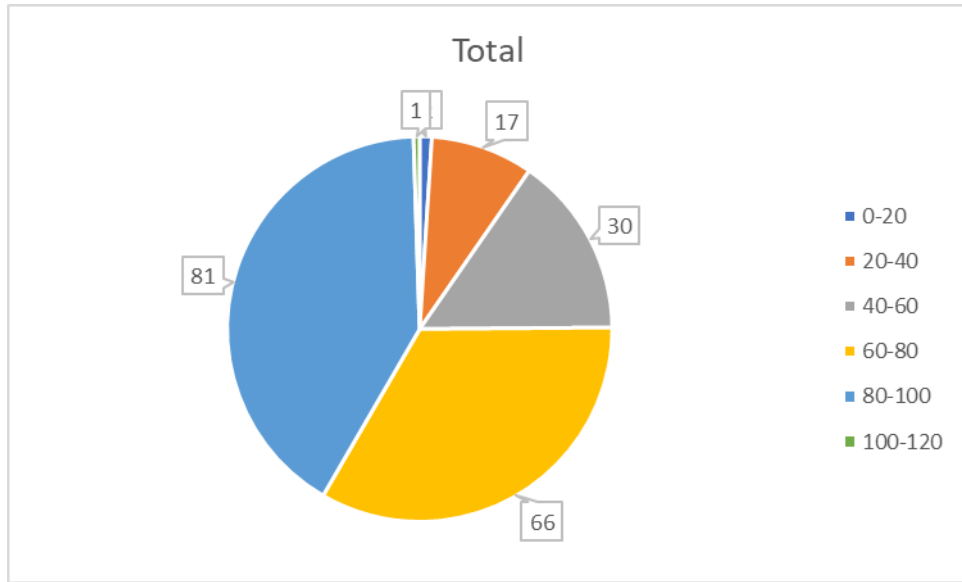


Figure 3: Age distribution of confirmed cases from 3/2/2020 to present