

Town of Sudbury

Board of Health

Sudbury Health Department
275 Old Lancaster Road
Sudbury, MA 01776

Sudbury Health Dept. Weekly COVID-19 Report as of June 22, 2020

The Sudbury Health Department is actively monitoring the status of the COVID-19 pandemic among Sudbury residents. The reporting structure below is designed to balance the privacy of affected residents, while keeping the public informed about COVID-19 activity among Sudbury residents on a weekly basis. The frequency and format are subject to change. It is important to understand that these numbers DO NOT include positive cases among non-residents, who work in Sudbury ONLY THOSE who LIVE IN SUDBURY.

Table 1. Distribution of confirmed and clinically diagnosed cases in Sudbury

COVID-19 Diagnosis	Total Cases	New Cases	Active cases	Recovered/off quarantine
Confirmed* COVID-19	196	5	9	157
Probable** COVID-19	17	1	2	13
Contacts***	102	3	2	100

*Confirmed cases are individuals who had a positive lab test.

**Probable cases are individuals, who had positive antibody testing and/or were clinically diagnosed with COVID-19 because of symptoms and confirmation of close contact with COVID-19, but were not lab tested. Probable cases may also include individuals whose death certificate listed COVID-19 as a cause of death, who were not lab tested.

***Contacts are people who were exposed to a positive case and were quarantined (exposed but no illness).

Table 2. COVID-19 cases in the community versus long term care facilities

Sudbury Community Cases	52
Long Term Care Confirmed Cases	144

Table 3. COVID-19 cases by gender and age

Female	120
Male	76
0-20	2
20-40	17
40-60	30
60-80	65
>80	82

Please Note: These estimates are based upon data reported by the Massachusetts Department of Public Health and change frequently. This report reflects the data available to the Sudbury Health Department on a weekly basis, ending each Monday at 12 midnight.

Confirmed Cases to Date

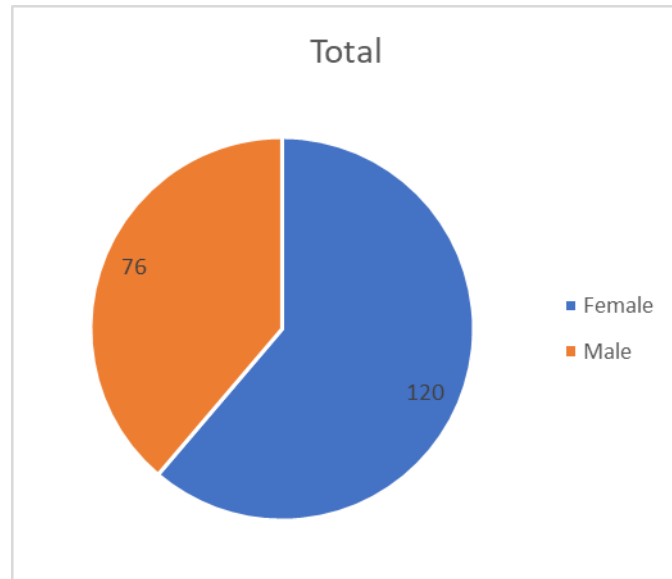


Figure 1: Confirmed cases by gender from 3/2/2020 to present

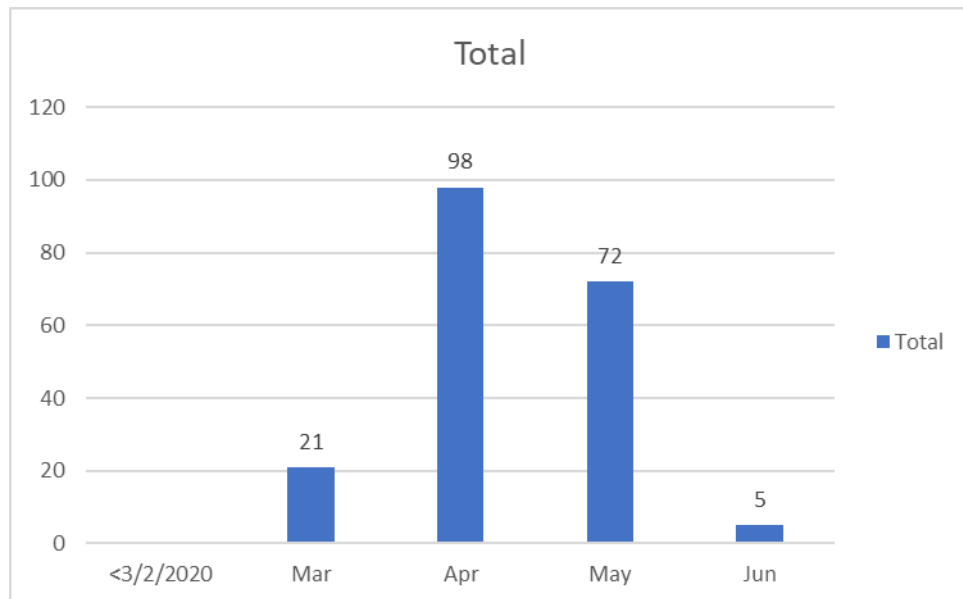


Figure 2: Confirmed cases by month from 3/2/2020 to present

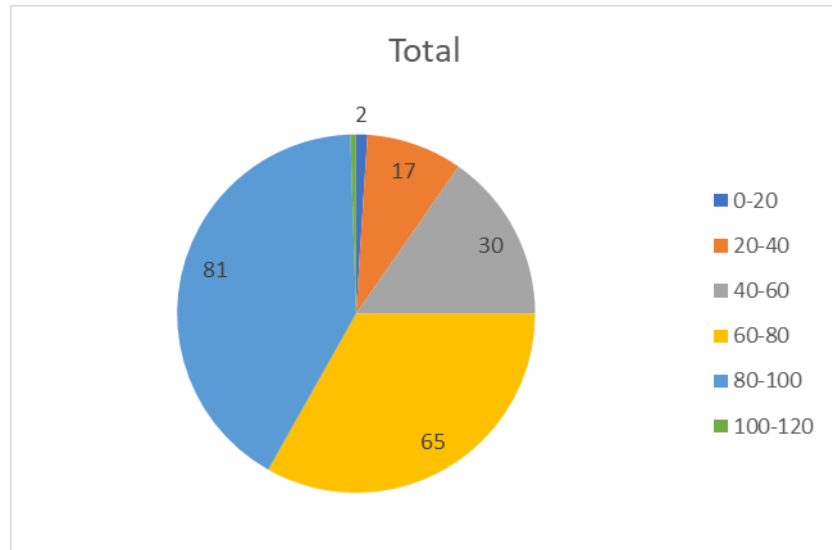
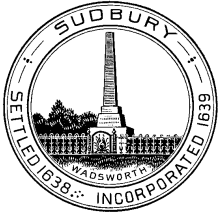


Figure 3: Age distribution of confirmed cases from 3/2/2020 to present



Town of Sudbury

Board of Health

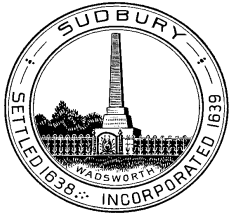
DPW Office Building
275 Old Lancaster Road
Sudbury, MA 01776
978 440-5479

5/11/20

The Sudbury Health Department is now referring disease surveillance cases to the Contact Tracing Collaborative (CTC) by Partners-In-Health, Governor Baker's privatized effort to assist local health departments with COVID-19 contact tracing. CTC will now investigate overflow positive cases and follow these cases through isolation and quarantine. CTC will not release numbers of positives and contacts until these cases are closed and isolation and quarantine requirements are completed.

As a result, the health department will not be publishing weekly COVID cases and contacts in Sudbury. Please refer to the Massachusetts Department of Public Health website for information by city and town.

Link: <https://www.mass.gov/info-details/covid-19-response-reporting#covid-19-cases-by-city/town->



Town of Sudbury

Board of Health

DPW Office Building
275 Old Lancaster Road
Sudbury, MA 01776
978 440-5479

5/5/2020

The Sudbury Health Department is actively monitoring the status of the COVID-19 pandemic in Sudbury residents. The reporting structure below is designed to balance the privacy of affected residents while keeping our town informed about COVID-19 activity. As you can imagine, our COVID-19 related workload has BOH staff stretched well beyond routine capacity. Our priority must remain focused on case ascertainment, tracing and containment. We will do our best to continue to provide weekly updates. Please be patient. **It is important to understand that these numbers DO NOT include positive cases growing among non-residents who work in Sudbury ONLY THOSE who LIVE IN SUDBURY.**

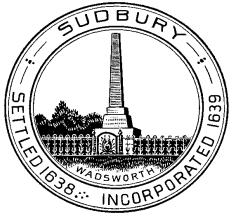
The state has begun releasing the number of COVID-19 cases by town. **Please note that there will be discrepancies between the state and our BOH reports.** We believe our BOH report represents a more accurate estimate of COVID-19 disease burden in Sudbury. The primary reason relates to the fact that we include clinically confirmed cases (cases diagnosed by a physician based on direct COVID-19 exposure, typically from another family member and the presence of cardinal symptoms) and tracing allows us to better qualify Sudbury residency.

Based on recent epidemiologic data, we know that 50-60% of all cases in communities remain unidentified, even though they are readily spreading COVID-19. We conservatively estimate the number of COVID-19 positive cases is at least two or three times larger than what is identified and reported in most communities. The number of cases continues to grow in Sudbury among residents and non-residents every day. PLEASE THINK CAREFULLY ABOUT WHAT YOU CONSIDER ESSENTIAL ACTIVITIES, CONTINUE TO PRACTICE SOCIAL DISTANCING TO HELP PROTECT YOURSELF, YOUR FAMILY AND OUR COMMUNITY. The MA Department of Public Health recommends reviewing state, county and town data found at: <https://www.mass.gov/info-details/covid-19-cases-quarantine-and-monitoring# covid-19- cases-in-massachusetts->

Sudbury	Active cases	Total cases to date
Confirmed COVID cases	53	93
Clinical COVID cases	3	17
People quarantined (exposed but no symptoms)	17	88

Total quarantine/positive cases	198
--	------------

Age	
< 19	38
20-40	46
40-60	46
60-80	28
>80	40



Town of Sudbury

Board of Health

DPW Office Building
275 Old Lancaster Road
Sudbury, MA 01776
978 440-5479

4/28/2020

The Sudbury Health Department is actively monitoring the status of the COVID-19 pandemic in Sudbury residents. The reporting structure below is designed to balance the privacy of affected residents while keeping our town informed about COVID-19 activity. As you can imagine, our COVID-19 related workload has BOH staff stretched well beyond routine capacity. Our priority must remain focused on case ascertainment, tracing and containment. We will do our best to continue to provide weekly updates. Please be patient. **It is important to understand that these numbers DO NOT include positive cases growing among non-residents who work in Sudbury ONLY THOSE who LIVE IN SUDBURY.**

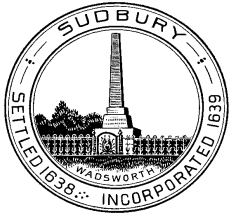
The state has begun releasing the number of COVID-19 cases by town. **Please note that there will be discrepancies between the state and our BOH reports.** We believe our BOH report represents a more accurate estimate of COVID-19 disease burden in Sudbury. The primary reason relates to the fact that we include clinically confirmed cases (cases diagnosed by a physician based on direct COVID-19 exposure, typically from another family member and the presence of cardinal symptoms) and tracing allows us to better qualify Sudbury residency.

Based on recent epidemiologic data, we know that 50-60% of all cases in communities remain unidentified, even though they are readily spreading COVID-19. We conservatively estimate the number of COVID-19 positive cases is at least two or three times larger than what is identified and reported in most communities. The number of cases continues to grow in Sudbury among residents and non-residents every day. PLEASE THINK CAREFULLY ABOUT WHAT YOU CONSIDER ESSENTIAL ACTIVITIES, CONTINUE TO PRACTICE SOCIAL DISTANCING TO HELP PROTECT YOURSELF, YOUR FAMILY AND OUR COMMUNITY. The MA Department of Public Health recommends reviewing state, county and town data found at: <https://www.mass.gov/info-details/covid-19-cases-quarantine-and-monitoring# covid-19- cases-in-massachusetts->

Sudbury	Active cases	Total cases to date
Confirmed COVID cases	45	75
Clinical COVID cases	1	15
People quarantined (exposed but no symptoms)	27	87

Total quarantine/positive cases	177
--	------------

Age	
< 19	34
20-40	42
40-60	45
60-80	24
>80	32



Town of Sudbury

Board of Health

DPW Office Building
275 Old Lancaster Road
Sudbury, MA 01776
978 440-5479

4/20/2020

The Sudbury Health Department is actively monitoring the status of the COVID-19 pandemic in Sudbury residents. The reporting structure below is designed to balance the privacy of affected residents while keeping our town informed about COVID-19 activity. As you can imagine, our COVID-19 related workload has BOH staff stretched well beyond routine capacity. Our priority must remain focused on case ascertainment, tracing and containment. We will do our best to continue to provide weekly updates. Please be patient. **It is important to understand that these numbers DO NOT include positive cases growing among non-residents who work in Sudbury ONLY THOSE who LIVE IN SUDBURY.**

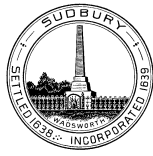
The state has begun releasing the number of COVID-19 cases by town. **Please note that there will be discrepancies between the state and our BOH reports.** We believe our BOH report represents a more accurate estimate of COVID-19 disease burden in Sudbury. The primary reason relates to the fact that we include clinically confirmed cases (cases diagnosed by a physician based on direct COVID-19 exposure, typically from another family member and the presence of cardinal symptoms) and tracing allows us to better qualify Sudbury residency.

Based on recent epidemiologic data, we know that 50-60% of all cases in communities remain unidentified, even though they are readily spreading COVID-19. We conservatively estimate the number of COVID-19 positive cases is at least two or three times larger than what is identified and reported in most communities. The number of cases continues to grow in Sudbury among residents and non-residents every day. PLEASE THINK CAREFULLY ABOUT WHAT YOU CONSIDER ESSENTIAL ACTIVITIES, CONTINUE TO PRACTICE SOCIAL DISTANCING TO HELP PROTECT YOURSELF, YOUR FAMILY AND OUR COMMUNITY. The MA Department of Public Health recommends reviewing state, county and town data found at: <https://www.mass.gov/info-details/covid-19-cases-quarantine-and-monitoring# covid-19- cases-in-massachusetts->

Sudbury	Active cases	Total cases to date
Confirmed COVID cases	30	53
Clinical COVID cases	1	14
People quarantined (exposed but no symptoms)	10	66

Total quarantine/positive cases	133
--	------------

Age	
< 19	24
20-40	37
40-60	38
60-80	13
>80	21 (largest Increase this week)



Town of Sudbury

Board of Health

Sudbury Health Department
275 Old Lancaster Road
Sudbury, MA 01776
978-440-5478
Health@sudbury.ma.us

April 13, 2020

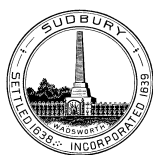
The Sudbury Health Department is actively monitoring the status of the COVID-19 pandemic among Sudbury residents. The reporting structure below is designed to balance the privacy of affected residents while keeping the public informed about COVID-19 activity among Sudbury residents on a weekly basis. The frequency and format are subject to change. It is important to understand that these numbers DO NOT include positive cases growing among non-residents who work in Sudbury ONLY THOSE who LIVE IN SUDBURY.

Based on recent studies from China and Washington State, 20%-30% of all COVID-19 cases have no symptoms and another 30-40% of all cases are mild. In other words, 50-60% of all cases in communities remain unidentified, even though they are readily spreading COVID-19. We conservatively estimate the number of COVID-19 positive cases is at least two or three times larger than what is identified and reported in most communities.

The number of cases is growing in Sudbury among residents and nonresidents every day. PLEASE THINK CAREFULLY ABOUT WHAT YOU CONSIDER ESSENTIAL ACTIVITIES. CONTINUE TO PRACTICE SOCIAL DISTANCING TO HELP PROTECT YOURSELF, YOUR FAMILY AND OUR COMMUNITY. The MA Department of Public Health recommends reviewing State and County data found at: <https://www.mass.gov/info-details/covid-19-cases-quarantine-and-monitoring#covid-19-cases-in-massachusetts->

Sudbury	Active cases	Total cases to date
Confirmed COVID cases	21	36
Clinical COVID cases	3	13
People quarantined (exposed but no symptoms)	14	64
Total quarantine/positive cases		113

Age	
< 19	22
20-40	36
40-60	37
60-80	7
>80	11 (largest Increase this week)



Town of Sudbury

Board of Health

Sudbury Health Department
275 Old Lancaster Road
Sudbury, MA 01776

April 6th, 2020

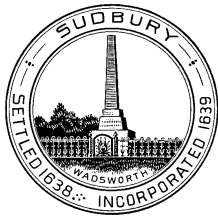
The Sudbury Health Department is actively monitoring the status of the COVID-19 pandemic among Sudbury residents. The reporting structure below is designed to balance the privacy of affected residents while keeping the public informed about COVID-19 activity among Sudbury residents on a weekly basis. The frequency and format are subject to change. *It is important to understand that these numbers DO NOT include positive cases growing among non-residents who work in Sudbury ONLY THOSE who LIVE IN SUDBURY.*

Based on recent studies from China and Washington State, 20%-30% of all COVID-19 cases have no symptoms and another 30-40% of all cases are mild. In other words, 50-60% of all cases in communities remain unidentified, even though they are readily spreading COVID-19. We conservatively estimate the number of COVID-19 positive cases is at least two or three times larger than what is identified and reported in most communities.

The number of cases is growing in Sudbury among residents and non-residents every day. PLEASE THINK CAREFULLY ABOUT WHAT YOU CONSIDER ESSENTIAL ACTIVITIES. CONTINUE TO PRACTICE SOCIAL DISTANCING TO HELP PROTECT YOURSELF, YOUR FAMILY AND OUR COMMUNITY. The MA Department of Public Health recommends reviewing State and County data found at: <https://www.mass.gov/info-details/covid-19-cases-quarantine-and-monitoring#covid-19-cases-in-massachusetts>

Sudbury	Active cases	Total cases to date
Confirmed COVID cases	8	20
Clinical COVID cases	2	11
People quarantined (exposed but no symptoms)	14	55

Total quarantine/positive cases		86
Age		
< 19	20	
20-40	30	
40-60	30	
60-80	4	
>80	2	



Town of Sudbury

Board of Health

Sudbury Health Department
275 Old Lancaster Road
Sudbury, MA 01776
978-440-5478
Health@sudbury.ma.us

March 30, 2020

The Sudbury Health Department is actively monitoring the status of the COVID-19 pandemic in Sudbury. The reporting structure below is designed to balance the privacy of affected individuals while keeping the public informed about COVID-19 activity in Sudbury on a weekly basis. The frequency and format are subject to change. **Sudbury numbers do not reflect the true nature of the COVID-19 outbreak. Due to the lack of testing, the number of cases is likely much higher.** The MA Department of Public Health recommends reviewing State and County data found at:

<https://www.mass.gov/info-details/covid-19-cases-quarantine-and-monitoring#covid-19-cases-in-massachusetts->

Sudbury	New Cases	Cases removed from Quarantine/Isolation	Active cases	Total cases to date
Confirmed COVID-19 cases	0	5	5	10
Presumed COVID-19 cases	0	3	3	6
People quarantined (exposed but no symptoms)	0	31	19	50

Transferred to other towns/states	New Cases	Transferred cases
Number of transferred cases to other states and towns	0	23
Total number of cases Sudbury other towns/state transferred		89

Sex

Female	36
Male	30

Age (Cases and close contacts)

< 19	16
20-40	24
40-60	23
60-80	2
>80	1

Status

Recovered	39
At Home	27