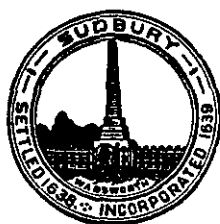


TOWN OF SUDBURY

REPORT

OF THE

FINANCE COMMITTEE



INCLUDING

WARRANT ARTICLES

FOR ANNUAL TOWN REPORT

1965

With Finance Committee's

RECOMMENDATIONS AND BUDGET

ARTICLES OF TOWN WARRANT

- | | |
|--|--|
| 1. To hear reports | 26. Establish Precinct for voting |
| 2. Personnel By-law changes | 25. Divide Town — Precincts |
| 3. Budget | 27. Voting machines — Purchase |
| 4. Anticipation Revenue Borrowing | 28. Finance Committee — Appointments |
| 5. Unpaid bills | 29. Publication of Budgets |
| 6. Chapter 90 | 30. Police — Chapter 97A |
| 7. Pratt's Mill Road — Widening | 31. Tree Warden — Elected |
| 8. Peakham Road — Widening | 32. Insect and Pest |
| 9. Landham Road Railroad Bridge | 33. Mosquito Control Committee |
| 10. Raymond Road Relayout | 34. Continuing committee — Municipal Light |
| 11. Road Grader — Purchase | 35. Landscape Committee |
| 12. Pickup Truck — Purchase | 36. Stabilization Fund — Regional H. S. |
| 13. Traffic Lights — Old Lancaster | 37. Road Abandonment |
| 14. Highway Commission — land to Water District | 38. Community College Study |
| 15. West Street — Acceptance | ZONING BY-LAW |
| 16. H. H. F. A. — Loan for study | 39. Non-conforming use |
| 17. Conservation Fund | 40. Planning Board (District #12) |
| 18. Conservation Commission — Umbrello Land | 41. Planning Board (District #14) |
| 19. Eminent Domain | 42. Planning Board (District #9) |
| 20. Land to Dept. Fish & Game | 43. Planning Board (District #8) |
| 21. Tennis Courts | 44. Planning Board (District #7) |
| 22. Upper Town Hall — Renovations | 45. Limited Business (McMurtry) |
| 23. Permanent Bldg. Committee — School Space Study | 46. Route 20 By-pass |
| 24. No hunting | 47. Industrial District #3 |
| | 48. Industrial District #4 |
| | 49. Industrial District #5 |

1965 FINANCE COMMITTEE REPORT

GENERAL

In this year's report, narrative comments have been grouped together by major budget categories providing a new unified over all picture of the Town fiscal patterns. Individual budget recommendations and appropriate motions will be found following each number budget category under "Article 3" and following each special article concerning non-recurring expense or containing fiscal implications.

At the time of this writing (February 15, 1965) several major fiscal areas are still under study which will be reported in detail at the Town Meeting. Chief among these in financial significance is the Sudbury Schools budget where the requested increase (21%), as submitted represents an approximate \$9.50 tax rate increase. Significant program expansions are requested in the areas of Highway and General Government; and the Regional High School budget has increased by approximately 12%.

At this time, these requested increases plus the special articles generate a potential tax rate effect as follows:

Approximate Tax Rate Increase

1. Normal Town Budget increases reflecting step-rate wage changes, Regional High School growth but no new major program expansions: Net Increase: \$80,000.....	\$3.20
2. Major Program Expansions — includes Town Hall Office renovations, Highway Commission staff and program additions: Net Increase: \$25,000.....	\$1.00
3. Special Articles Requested: Total: \$104,000.....	\$4.16
4. Sudbury Schools Budget Increase: Total: \$241,000.....	\$9.64
Total Requested Increases and Special Articles: \$450,000.00.....	\$18.00

The above tax rate effects are based on \$25,000.00 in expenditures equalling \$1.00 on the tax rate. Again as in the past several years, no estimate has been provided by the Assessors as to the expected 1965 total valuation. The Finance Committee estimate that this figure will approximate \$25,000,000 to \$26,000,000 for 1965. This is a major one-year effect and has triggered the several reductions recommended by the

Finance Committee in both the budget and special article requests. If the Finance Committee's recommendations are followed, the expected tax rate increase will be between \$12.00 and \$13.00, still a considerably large one-year effect. **On this basis the 1965 tax rate is estimated at approximately \$115.00.**

Note: Each \$25,000 above the Finance Committee recommendations which the Town Meeting chooses to approve will add approximately \$1.00 additional to the ultimate tax rate.

A strong need is in evidence for a closer level of consideration and planning between all Town Departments. It is recommended that efforts be undertaken to develop a "central planning" function dealing with operational requirements. The recent pattern of short-term project planning has not provided data sufficient to the assignment of priorities in the many areas covered. It is suggested that this "long range operational plan" be prepared to cover in general the pattern followed in the "Long Range Fiscal Plan" published in 1964 by the Finance Committee.

TRANSFERS FROM RESERVE FUND — 1964

During 1964 the Finance Committee approved the following requests for transfer of funds from the Reserve Fund:

A. General Government	\$18,010.94
Assessors' Office — Other Expenses	\$900.00
Elections and Registrations — Town Meeting and Election Expense	2,738.00
Engineering Office — Other Expenses	100.00
Finance Committee — Salary	100.00
Law — Other Legal Expenses	10,072.94
Planning Board — Salary	300.00
Selectmen — Other Expenses	3,500.00
Tax Collector's Office — Salaries, Clerical	300.00
B. Protection of Persons and Property	\$5,552.25
Conservation Commission — Expenses	100.00
Dog Officer — Expenses	15.00
Fire Department — Salaries	4,485.00
Operating Expenses	250.00
Uniform Allowance	300.00
Police Department — Uniform Allowance	275.00
Tree Department — Tree and Brush Control	127.25
C. Health and Sanitation	\$550.00
Board of Health — Dental Clinic	550.00

D. Highway Commission	\$1,225.00
Highway Administration — Expenses	975.00
Cemetery — Operating Expense	250.00
G. Schools	\$1,500.00
Sudbury Public Schools — Evening Use	1,500.00
Total Amount Transferred	\$26,838.19

	Funds Available 1964	Charges 1964	Requested 1965	Recom- mended 1965
A. General Government	\$170,236.64	\$156,382.20	\$198,760.90	\$157,245.00
B. Protection of Persons and Property	272,633.00	260,074.84	292,754.00	\$270,217.00
C. Health and Sanitation	19,200.00	17,774.84	20,454.00	20,300.00
D. Highway Commission	134,302.25	128,192.88	170,956.50	146,646.50
E. Public Welfare and Assistance	31,900.00	31,900.00	21,500.00	21,500.00
F. Veterans' Services	8,550.00	5,325.04	5,550.00	5,550.00
G. Schools				
1. Regional	578,329.40	578,329.40	646,282.14	646,282.14
2. Public	1,182,500.00	1,181,775.27	1,422,534.00	1,367,086.00
H. Libraries	27,711.75	25,654.61	33,405.00	28,277.00
I. Parks and Recreation	16,200.00	14,755.74	16,894.00	16,644.00
J. Unclassified	51,500.00	40,801.18	38,881.00	38,682.00
and Reserve	28,000.00	26,838.19	43,000.00	43,000.00
K. Debt Service	442,285.00	442,284.50	422,244.00	422,244.00
Sub-Total	\$2,963,348.04	\$2,910,088.69	\$3,333,215.54	\$3,183,856.64
L. Statutory Assessments	49,098.05	50,942.89	56,300.00	56,300.00
Sub-Total	\$3,012,446.09	\$2,961,031.58	\$3,389,515.54	\$3,240,156.64
Less Transfers				
from Reserve Fund	28,000.00	26,838.19		
Net General Budget	\$2,984,446.09	\$2,934,193.39		

DEPARTMENTAL

A. General Government

In budget preparations all clerical help in the Town Hall has been combined in a pool operating under the assignment of the Executive Secretary. This method of operation will improve the efficient utilization of the work force in the Town Hall, and provide flexibility for intermittent peak work load situations which are characteristic of certain of the Town Hall operations. This change in operating method will reduce costs to the Town \$1,382, when compared with 1964 costs, and

\$3,796 in 1965, when compared with amount requested by the several Town Departments in the Town Hall.

A review of elected officials, salaries has resulted in very minor changes. It is recommended that consideration be given by both the Committee on Town Administration and the Personnel Board to providing a continuing method of salary review and to the possible effects of "combined offices" and other such factors relevant to up-dating functional requirements.

- A- 7 The 1965 budget includes \$3,000 for the State required Decennial Census. This includes census taking and data analysis.
- A- 8 In 1965 the Election and Town Meeting Expense includes the renewal rental for voting machines of \$1,500. Other expenses are budgeted at \$1,838 less than expenditures in 1964.
- A- 9 The salary expense for the Town Engineering Office provides for the addition of a full-time engineering aide in 1965. This addition is commensurate with the need for additional service requirements of the Town.
- A-10 The mileage expenses for the Town Engineering Office will be reduced as a result of transferring a Town owned station wagon to the Engineering Office from the Fire Department. This vehicle which is fully equipped, adequate and serviceable for the Town Engineer was scheduled for replacement by the Fire Department in its normal replacement cycle. This procedure will provide for the utilization of a portion of the marginal life of a Town vehicle in a non-critical service area; and fulfill a Town need at minimum cost.
- A-18 Expenditures in 1964 included costs of \$8,000 for major repairs required at the Loring Parsonage, to provide facilities for the Health Survey and additional office space for Town functions. No major expenditures are planned for 1965.
- A-21 This includes the costs of legal services and expenses relative to the Supreme Court Appeal of the Town's case on the D. P. U. decision.
- A-31 Selectmen expenses include \$1,000 for estimated cost of preparing listings giving the State required Decennial Census.
- A-42 The increase in the Town Hall Building Expense and Repair includes a full year of maintenance expense for the "White School Building," which was released by the School Committee in October 1964. In addition to

this increase in costs for 1965 of \$2,500, the budget includes \$1,240 for corrections required by the liability and fire insurance carrier.

B. Protection of Persons and Property

No major budget changes are recommended in this area. Increases reflect normal growth in salaries and wage rates. New personnel were requested by both the Fire and Police Departments but these requests were felt to be not valid at this point in time by both the Board of Selectmen and the Finance Committee. The Tree Department becomes officially incorporated within the Highway Commission this year. Its budget data will be found under D.

C. Health and Sanitation

This budget reflects slight increases in inspection activity and includes part of the cost (shared with the Schools), of an additional nurse being added to the District Public Nursing Association staff. Procedures have been initiated to reduce Dental Clinic costs by considering "ability-to-pay" more closely in the fee arrangements.

D. Highway Commission

This newly organized department has pulled together a variety of previously isolated functions and is in the process of developing long needed program planning.

A number of specific road projects are under consideration, reflecting a variety of priority needs.

Additionally, organizational changes requested included some additions to staff.

It is recommended that some of these changes both in staffing and program be delayed this year due to the major outlay anticipated in other areas. It is also suggested that major road project planning be continued on a somewhat longer range basis to permit the inclusion and timing of these projects to dovetail with other major capital programs as well as meet the needs of critical highway programs.

It is requested that new capital equipment consisting of a road grader and pick-up truck (in special articles) be acquired. The Finance Committee recommends the road grader, if voted, be paid for from Road Machinery Funds. Subsequent use of this Town equipment is charged back to the State under various road programs generating further revenue.

The 1964 appropriation for the Highway Commission program amounted to \$124,950. The proposed budget for 1965 is

estimated and requested for \$166,466.50, an increase of \$41,516.50 or 33.2%. A comparison of sums approved for line items in 1964 with sums requested for the same items during 1965 reveals the areas of substantial increase to be salaries, snow and ice removal, street lighting, bridge repair and street damage repair. In addition several new items were added to this account. The following chart indicates the items which should be especially considered in arriving at a recommendation for the 1965 budget:

<i>Item</i>	<i>1964</i>	<i>1965</i>	<i>\$ Difference or Increase</i>	<i>% Inc.</i>
Salaries	10,350	12,011	2,011	20%
Legal Expense	—	2,500*	2,500	—
Snow and Ice Removal	27,500	34,200	6,700	24%
Tree Planting	500†	2,000	1,500	400%
Tree and Brush Control	6,000‡	4,000	—2,000	—33%
Insect and Pest Control	1,500‡	1,500	1,500	—
Street Lighting	11,500	13,500	2,000	17%
Bridge Repair	3,000	3,750	750	25%
Street Drainage Repair	4,500	8,300	3,800	84%
Gen. Hgwy. Maintenance	17,000	18,300	1,300	7%
Foremen: Highway{	—	12,000†	12,000	—
Tree and Cem.}				

* New Line Item

‡ Transferred from B. — items: 26, 27, 28

† New Positions

Some increase in the Highway Commission budget is warranted due to the approved salary increases for personnel which are consistent with the established incremental salary pay scales. In addition, the tree planting, tree and brush control and insect and pest control functions were added to the responsibilities of the Highway Commission. The dollar increase attributable to the items referenced is \$8900 (of the increases of \$41,516.50), with the additional \$12,000 for the highway and cemetery foreman, gross combined salaries accounts for more than half of the entire increases in the budget request.

Specific dollars recommended for each line items are shown on the attached sheet. It is significant to note that we recommend a central source of legal advice, guidance and service rather than the special legal expense of \$2,500 as proposed in the Highway Commission budget. The increase in request for snow and ice funds of 24% is supported somewhat by the addition of new areas to be worked such as the new Ephriam Curtis school and our experiences of increases needed in the past but an increase in excess of approximately 10% would be out of line.

It appears from the report of the Commission after a full year's operation that the operations and organization of this

department will continue to improve. The plans to implement a tree and brush nursery on appropriate town land appears to have merit from both an economy and conservation point of view. Although we have recommended less than requested for the street lighting, drainage and street repair programs we are pleased to note an aggressive and productive program on the part of the commission. The sum recommended of on the part of the commission. The sum of \$146,646.50 exceeds 1964 by \$18,454.00. The principal increases are for: 1) transferred items — \$7,500.00; 2) \$5,943.00, new positions and step increases in salaries; 3) \$3,700.00 for snow and ice removal which total \$17,143.00 of the \$18,454.00 increase.

Street drainage is long overdue in some areas. We concur in a positive program to provide proper drainage to all residents of the town. This must be done on a planned basis consistent with good judgments.

Snow and ice removal of \$31,200 includes costs for additional school plowing and the costs of removal of snow from the walkways.

E. Public Welfare and Assistance

This budget shows a major drop in the requested amount (\$10,000) over 1964 figures.

This reflects the application of some accumulated State and Federal Aid monies.

The level of activity appears to be continuing approximately the same over the past few years.

F. Veterans' Services

This account request is down significantly from 1964 reflecting a decrease in the "case activity" anticipated.

G. Schools

G1. Lincoln-Sudbury Regional High School

CONSIDERATION OF REGIONAL HIGH SCHOOL BUDGET

COMPARATIVE DATA:

A detailed cost analysis has been made of thirteen cities and towns which the Lincoln-Sudbury Regional School Committee, the administration and the Teacher Salary Study Committee have considered "educationally comparable." Data was obtained from the Massachusetts Teachers Association, the Massachusetts Department of Education and the Massachusetts Department of Corporations and Taxation. The Lincoln-Sudbury Regional High School ranks 2nd of 14 in

per pupil cost; 13th of 14 in equalized assessed valuation per child (tax base per child adjusted by State to common assessment). We note further that the median salary of classroom teachers at the Regional High School show a large \$600 increase from 1963 to 1964.

A similar comparison has been made among regional high schools and tabulated in Table 2. Only regional high schools have been selected which are providing grades 9-12 and which have a student population greater than 500. Here we find the following: Lincoln-Sudbury Regional High School ranks 2nd again in operating cost per pupil. Only Concord-Carlisle Regional High School shows a higher operating cost per pupil than does Lincoln-Sudbury. We rank 6th of 11 in Regional assessed valuation, 2nd of 11 in General Control cost per student and it should be noted here that with the recent increase in the area of general control we appear to take over first place in this category, exceeding by a factor of two most of the comparable regions. The area of general control is a particularly sensitive one since it is an "overhead" item and seems to be a disproportionately large one at Lincoln-Sudbury Regional — it is the only region we know of that has its own superintendent, coupled with a normal complement of a principal and a vice-principal. The region should certainly give to its constituent towns a reasonable explanation for the high level of their present administrative costs.

Finally, we rank 1st of 11 (among Regional High Schools) in median teacher salary. We have more than 50% of all the \$10,000/year regional classroom teachers in the state. The customary rationale for high teacher salaries (which given the proper circumstances are certainly defensible) and high per student cost is that we must pay salaries high enough to be competitive — it would appear that we are making the competition rather than meeting it. Note also, that we rank 5th of 11 in per cent of teachers with M. S. degrees; this seems like a low position in view of our very high median salary position.

The only "educationally comparable" high school that exceeds Lincoln-Sudbury Regional High School in per student cost is Concord-Carlisle. A significant portion of this increased cost is in the area of athletic costs; Concord-Carlisle being \$23.50/student and Lincoln-Sudbury being \$8.00/student. It is, however, significant to note that all of the so-called "prestige towns" are in the area from \$30 to \$120 per student less costly than is Lincoln-Sudbury Regional High School. We should not lose sight (nor should the Lincoln-Sudbury School Committee) of our relatively weak position with respect to our "educational comparables," of our tax base per student.

The rather peculiar nature of the Lincoln-Sudbury School Committee (quasi-municipal) makes it mandatory that any

recommendations we or Lincoln might make will have to find sympathy on the committee for positive action to result.

Recommendations:

The maintenance of a separate and distinct superintendency for the Sudbury school system is costly and suggests the possibility of a lack of continuity developing between Junior and Senior High School. The two responsible school committees should jointly seek a unified superintendent, possibly in conjunction with Lincoln, who could then be responsible for the total school administration. The chain of command could then be vertical and continuous rather than horizontal and possibly discontinuous.

Insert Tables, Pages 17, 18, 19.....

(9-12) REGIONALS (1963-1964 DATA)

	<i>Support per pupil*</i>	<i>1963 Avg. Member- ship</i>	<i>Median Teacher Salary</i>	<i>General Control</i> <i>Gen. Cont. per pupil</i>	<i>Region Assessed Valuation</i>	<i>% Teachers with M.S. Degrees</i> <i>Pupil-Staff Ratio</i>
WACHUSETT	\$495	1416	\$6000	20,083 \$14.20	31,857,014	
PLYMOUTH-CARVER	553	1061	5900		46,111,710	38% 17.0
WHITMAN-HANSON	503	967	5500	9,374 \$ 9.70	18,715,053	21% 17.9
LINCOLN-SUDBURY	784	823	8000	22,879 \$27.80	32,160,150	49% 15.0
CONCORD-CARLISLE	809	787	7800	15,721 \$19.10	31,710,429	70% 16.2
BRIDGEWATER-RAYNHAM	601	754	6200	14,064 \$18.70	35,459,074	52% 15.2
CENTRAL BERKSHIRE	688	711	6800	12,355 \$17.10	32,188,070	51% 15.6
DENNIS-YARMOUTH	658	640	6850	13,736 \$21.40	51,204,150	34% 17.9
NORTHBORO-SOUTHBORO	629	632	7600	12,729 \$20.30	26,605,000	73% 14.3
HAMPDEN-WILBRAHAM	677	622	6500	22,792 \$31.60	60,593,610	30% 14.8
DIGHTON-REHOBOTH	540	545	5600	8,341 \$15.30	23,522,160	39% 14.1

* Includes cost of General Control and Transportation

HIGH SCHOOLS SYSTEMS DEEMED EDUCATIONALLY COMPARABLE
TO LINCOLN-SUDBURY REGIONAL HIGH SCHOOL
BY LINCOLN-SUDBURY REGIONAL SCHOOL COMMITTEE AND ADMINISTRATION

	<i>Equalized Valuation per child 1963</i>	<i>*1962-1963 School Support per pupil</i>		<i>% Teachers w/ M.S. Degr</i>	<i>General Control</i>	<i>1962-1963 Avg. Member- ship, Grade 1-12</i>	<i>1962-1963 Avg. H. S. Enroll- ment</i>
		<i>Grade</i>	<i>Cost</i>	<i>Pupil-Staff Ratio</i>	<i>Gen. Cont. per pupil</i>		
BEDFORD	26,087	1-6 9-12	443.04 612.11	48% 16.0	29,759 \$13.00	2290	
BELMONT	42,765	1-6 7-9 10-12	418.39 434.98 518.99	65% 17.4	64,496 \$14.80	4354	1018
BROOKLINE	58,840	1-8 9-12	599.21 642.11	64% 14.9	98,547 \$14.75	6696	
CONCORD-CARLISLE		9-12	802.58	70% 16.2	15,721† \$20.00	787†	787
Concord Carlisle	26,593 18,777						
FRAMINGHAM	26,002	1-8 9-12	446.12 615.51	66% 16.8	122,303 \$13.60	9013	
LEXINGTON	22,007	1-6 7-9 10-12	482.44 658.57 705.21	83% 14.4	58,763 \$ 8.34	7011	1846
NATICK	24,340	1-6 7-9 10-12	310.82 456.45 614.77	61% 16.4	66,185 \$ 8.50	7816	1311
NEEDHAM	35,257	1-6 7-9 10-12	450.47 629.54 632.29	72% 15.8	88,739 \$15.10	5884	

	1963 Equalized Valuation per child	*1962-1963 School Support per pupil		% Teachers w/M.S. Degr Pupil-Staff Ratio	General Control Gen. Cont. per pupil	1962-1963 Avg. Member- ship Grade 1-12	1962-1963 Avg. H.S. Enroll- ment
		Grade	Cost				
NEWTON	36,137	1-6 7-9 10-12	439.36 625.53 680.34		231,075 \$13.20	17,701	3885
WAYLAND	25,834	1-6 7-9 10-12	396.06 524.14 731.73	58% 14.0	43,668 \$14.70	2967	696
WELLESLEY	41,025	1-6 7-9 10-12	455.71 631.27 696.02	72% 14.9	107,108 \$18.90	5661	1115
WESTON	38,854	1-6 7-8 9-12	496.84 754.39 744.23	74% 13.6	50,731 \$21.50	2356	636
WINCHESTER	32,190	1-6 7-9 10-12	362.33 529.47 546.71	73% 17.7	77,435 \$16.70	4647	1042
LINCOLN-SUDBURY Sudbury Lincoln	22,291 36,372	9-12	767.21	49% 15.0	22,819† \$27.70	823‡	823

* Including transportation costs.

† Tabulated general control cost are for total school systems, grades 1-12. Comparable numbers for Concord and Sudbury are 17.15 and 13.85 respectively.

‡ Grades 9-12 only.

G2. Sudbury Schools

This account reflects a major budget increase in 1965 of \$247,000. Detailed studies have continued throughout the year between sub-committees of both the Sudbury School Committee and the Finance Committee. The highlights of their study are summarized in some detail below.

At the time of this report preparation (February 15, 1965) this activity is still continuing. Progress has been seen at the sub-committee level and it is hoped that discussions still to be pursued before Town Meeting will produce a significant action toward curtailing the still "meteoric" rise in the cost-per-pupil increase.

Detailed reporting and final recommendations will be presented at the Town Meeting.

Sudbury Schools

The tax rate of the Town of Sudbury is more than 70% affected by the actions of the School Committees. Every effort has been made by the Finance Committee to impress upon the committees the need for reducing the rate of increase in unit costs and establishing meaningful fiscal controls for accomplishing this reduction.

Historically, the percent increase in the school budget has substantially exceeded the percent increase in student population. This year the School Committee is requesting an increase of 17.1% in operating budget while census figures (which have been agreed to by both committees) indicate a 6.9% increase in student population serviced. The percent increase in operating costs is $2\frac{1}{2}$ times the percent increase in pupils serviced.

The Finance Committee realizes that the school budget must continue to grow because the number of pupils in the system is increasing. The projected growth in student population is presented in Figure 1. The growth of the school population has been a function of in-migration, which is related to the building rate, and to the accommodation of the influx of young families during the 1959-60 period. The school system will soon have accommodated the bulge which resulted from that influx and growth subsequent to 1968 can reasonably be expected to follow the now reduced building rate (approximately 70 homes per year).

The building rate has substantially decreased (a fact that is strongly tax rate associated) as shown in Figure 2. The effect of the decreased building activity upon the rate of growth of total assessed valuation is demonstrated in Figure 3. Plotted on the same graph is the growth of school OPERATING budget.

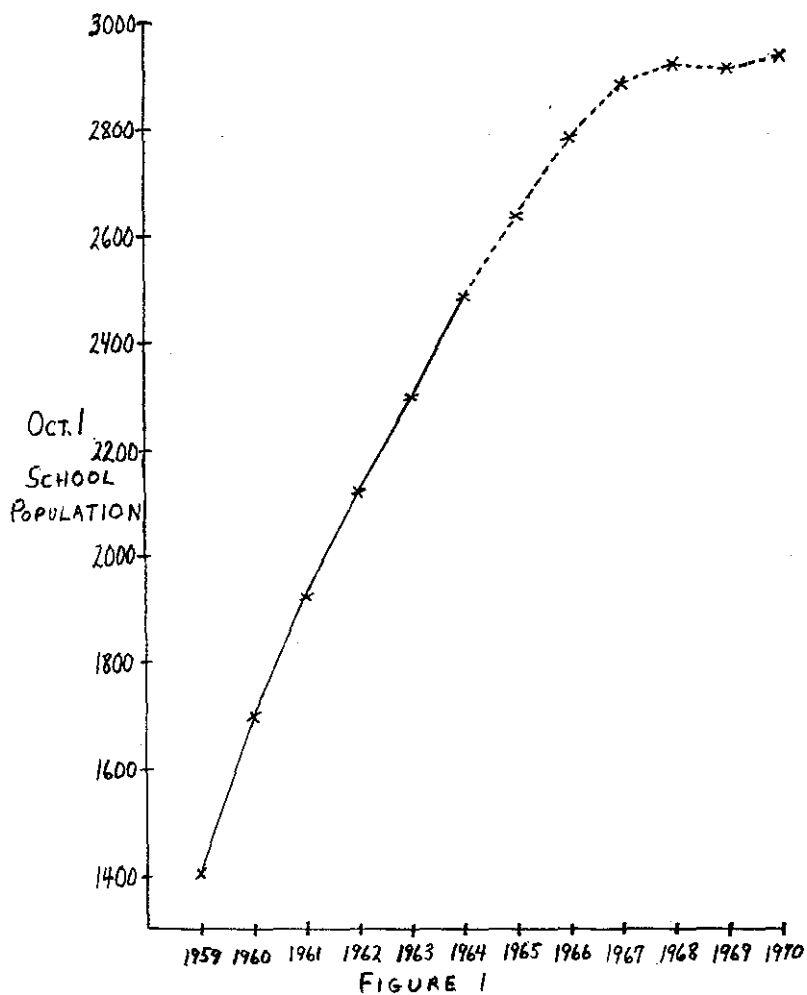


FIGURE 1
SCHOOL POPULATION GROWTH AND PROJECTION

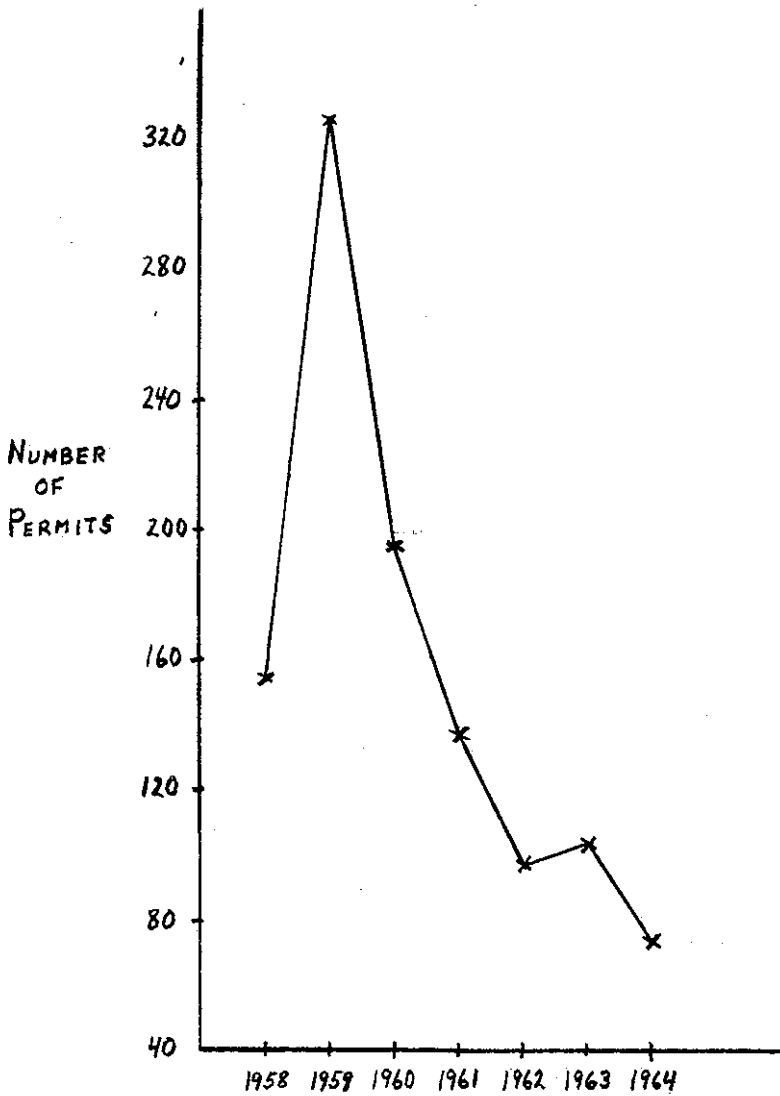


FIGURE 2
DWELLING BUILDING PERMITS ISSUED

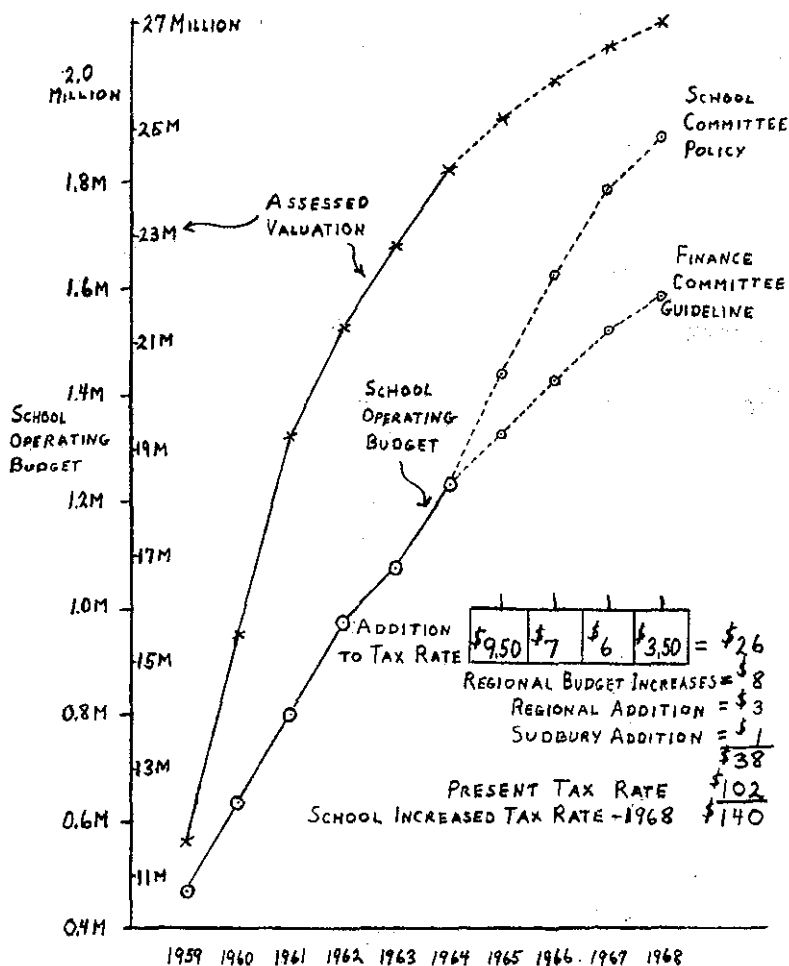


FIGURE 3

SUDBURY'S FISCAL PROBLEM

The rate of growth of assessed valuation (tax base) is decreasing. The rate of growth of school operating expenditures is still increasing. During the period of rapid growth in total assessed valuation, it was relatively easy to increase school expenditures because the expansion in tax base made the annual tax rate increases relatively minor. The situation is now reversed. Expanding operating costs are now more directly reflected as tax rate increases. We have experienced the first of a series of substantial annual tax rate increases. The two projected portions of the school operating expenditures curve have been derived from the projected school population curve, based on:

1. The continuation of present School Committee policy (conservatively estimating that the percent increase in operating costs will "only" be twice the percent increase in pupils.)
2. A suggested guideline of $1\frac{1}{2}\%$ annual increase in per pupil costs.

The annual impact on the tax rate of a continuation of the current trend in school costs is indicated beneath the curves. The dollar increase in school operating expenditures can be derived from Figure 3. The number of dollars which will equal \$1.00 on the tax rate is also available from Figure 3, by dividing the total assessed valuation by 1000, estimated at \$25,400 for 1965. The tax rate increase is arrived at by dividing the increase in operating costs by the number of dollars which equals \$1.00 on the tax rate. The tax rate effect of the 1965 budget is most easily arrived at by subtracting the 1964 Town appropriation of \$1,173,000 from the requested 1965 Town appropriation of \$1,414,586. That number, \$241,586, divided by \$25,400 yields a tax rate increase of \$9.50. Adding the tax rate effect of expected operating cost increases at the Regional High School, the Regional addition and a potential Sudbury elementary addition, you can arrive at an educationally induced tax rate increase of roughly \$40.00 by 1968. The Finance Committee considers the problem of getting through 1968 without achieving a confiscatory tax rate to be a serious one. We have defined this problem in detail for the School Committee. The best solution to fiscal problems as a Town, is their recognition of their fiscal problem and their willingness to face it now.

It is the Finance Committee position that a curtailment of expenditures by the School Committee is a clear matter of necessity. An extensive analysis has been performed of the available educational and fiscal characteristics of three distinct types of cities and towns, (1) "Educationally Comparable," (2) "Fiscally Comparable," (3) "Balanced Comparable," in an effort to fix reasonable levels to the Finance Committee

TABLE I—SUMMARY OF COMPARATIVE STATISTICS

	<i>Educational Comparables</i>	<i>Fiscal Comparables</i>	<i>"Balanced" Comparables</i>	<i>Sudbury</i>
1963-1964 Pupil-Staff Ratio	20.0	22.2	21.0	19.1
1962-1963 per pupil cost	481	380	430	500
% Teachers with Master's Degree	43	26	36	16
1962-1963 Equalized Valuation	33556	22096	25772	22291
% Debt was of Equalized Valuation	3.57	6.05	4.19	6.42
% School Tax is of Total Tax	55.8	59.5	58.8	68.5
% Growth 1950-1960	55	90	95	181
	Lincoln Concord Brookline Framingham Weston Bedford Wayland Lexington Winchester Needham Newton Belmont Natick Wellesley	Framingham Marshfield Maynard Sharon Westboro Wayland East Longmeadow Lexington Foxboro N. Reading	Lincoln Westwood Concord Framingham Acton Sharon Wayland	

recommendations concerning the school budget. Average values for these factors for these towns are presented in Table I, along with a listing of the included cities and towns.

The educationally comparable cities and towns are those which have been used by the Administration and School Committee for teachers salary comparisons. They have been said to be our "competition." Several observations can be made from the data of these cities and towns:

1. Their average per pupil cost is \$20 less than Sudbury's.
2. Their equalized assessed valuation (tax revenue base) per pupil is 50% greater.
3. The debt load in these towns measured as a percent of equalized valuation is 40% less than ours. In the case of Sudbury that debt is almost exclusively school debt.
4. We commit 13.3% more of every tax dollar to school purposes.
5. Their percentage of master's degree teachers is 2.7 times ours.
6. The pupil-staff ratio in Sudbury is roughly one pupil lower than in the other cities and towns whose economic characteristics are more favorable.

The fiscally comparable towns were chosen from 33 towns with equalized valuations within \pm \$4000 of Sudbury and a percentage debt between 4.5 and 8.5. The pertinent facts to be gleaned from these data are:

1. The average per pupil cost for the fiscally comparable towns was \$110 less than Sudbury's.
2. Their equalized valuation per pupil and percent debt are very comparable.
3. Ten percent more of their teacher's have master's degrees.
4. They average 3.1 more pupils per teacher.

Finally in an informal meeting between members of the School and Finance Committees a list of towns similar in geographic location, educational goals and economic characteristics was compiled. These are towns which have experienced substantial growth and have made a substantial commitment to the education of their children. These towns:

1. Spend \$70 less per pupil.
2. Have 1.9 more pupils per teacher.
3. Have a slightly higher equalized valuation per pupil.
4. Have a third less debt load.

5. Have 20% more of their teachers with master's degrees.
6. Commit 10.5% less of their total tax dollar to school purposes.

If one generalization can be made concerning these comparative data it would be:

The citizens, parents and taxpayers of the Town of Sudbury have made and are making a greater proportional commitment to education than any town in the Commonwealth.

A budget reduction of \$20 per student in total operating cost would place our costs equal to the average of the most expensive systems in the state. Such a budget cut would reduce the budget under consideration by \$52,700. A budget reduction of \$110 per student would yield a per pupil cost equivalent to the average of the fiscally comparable towns and would require a budget reduction of \$290,000. To match towns considered to be similar to Sudbury would require a reduction in per pupil cost of \$70 or a total budget reduction of \$185,000.

BALANCED COMPARABLES

	<i>63-64 Pupil- Staff Ratio</i>	<i>62-63 per Pupil Costs</i>	<i>% Teachers with a Master's Degree</i>	<i>62-63 Equalized Valuation per Pupil</i>	<i>% Debt was of Equalized Valuation (Dec. 1963)</i>	<i>% School Tax is of Total Tax (1964)</i>	<i>% Growth 1950-1960</i>	<i>Median Family Income</i>
<u>1-8: —</u>								
LINCOLN	16.0	534	38	36,372	3.89	60.0	131	8841
WESTWOOD	21.2	426	45	28,965	5.73	52.4	77	8690
CONCORD	20.0	511	44	26,593	2.20	59.3	45	8538
FRAMINGHAM	21.3	446	43	26,002	5.39	51.8	59	7495
ACTON	24.6	313	25	19,806	1.58	61.7	106	8264
SHARON	25.4	343	23	17,833	6.21	61.6	108	7917
<u>1-6, 7-9: —</u>								
WAYLAND	18.6	436	37	25,834	4.34	64.5	137	9363
AVERAGES	21.0	430	36	25,772	4.19	58.8	95	8444
SUDBURY	19.1	500	16	22,291	6.42	68.5	181	8538

FISCALLY COMPARABLE

	<i>1963-1964 Pupil- Staff Ratio</i>	<i>1962-1963 per Pupil Costs</i>	<i>% Teachers with a Master's Degree</i>	<i>1962-1963 Equalized Valuation per Pupil</i>	<i>% Debt was of Equalized Valuation (Dec. 1963)</i>	<i>% School Tax is of Total Tax (1964)</i>	<i>% Growth 1950-1960</i>	<i>Median Family Income (1960)</i>
1-8: —								
FRAMINGHAM	21.3	446	43	26,002	5.39	51.8	59	7495
MARSHFIELD	19.8	442	23	25,051	8.48	52.0	106	6897
MAYNARD	23.4	334	11	22,158	7.06	53.4	10	6295
SHARON	25.8	343	24	17,833	6.21	61.6	108	7917
WESTBORO	27.2	270	20	19,662	5.18	52.0	179	7007
AVERAGES	23.8	367	24	22,141	6.46	54.2	92	7122
1-6, 7-9: —								
WAYLAND	18.6	436	37	25,834	4.34	64.5	137	9363
E. LONGMEADOW	21.9	337	16	24,593	5.17	60.0	111	7271
LEXINGTON	17.8	534	44	22,007	6.01	67.9	60	9043
FOXBORO	21.9	335	24	19,538	4.56	65.7	44	6473
N. READING	23.8	327	13	18,285	8.11	65.7	89	7005
AVERAGES	20.8	394	27	22,051	5.64	64.8	88	7831
FISCALLY COMPARABLE	22.2	380	26	22,096	6.05	59.5	90	7477
SUDBURY	19.1	500	16	22,291	6.42	68.5	181	8538

EDUCATIONALLY COMPARABLE

	<i>1963-1964 Pupil- Staff Ratio</i>	<i>1962-1963 per Pupil Costs</i>	<i>% Teachers with a Master's Degree</i>	<i>1962-1963 Equalized Valuation per Pupil</i>	<i>% Debt was of Equalized Valuation (Dec. 1963)</i>	<i>% School Tax is of Total Tax (1964)</i>	<i>% Growth 1950-1960</i>	<i>Median Family Income (1960)</i>
<u>1 - 8: —</u>								
LINCOLN	16.0	534	38	36,372	3.89	60.0	131	8841
CONCORD	20.0	511	44	26,593	2.20	59.3	45	8538
BROOKLINE	16.6	599	48	58,840	1.55	32.0	—6	8380
FRAMINGHAM	21.3	446	43	26,002	5.39	51.8	59	7495
WESTON	21.1	560	45	38,854	2.91	69.2	64	13703
AVERAGES	19.4	516	42	37,332	3.19	54.5	59	9391
<u>1 - 6: —</u>								
BEDFORD	21.8	443	36	26,087	10.65	70.5	110	7893
<u>1 - 6, 7 - 9: —</u>								
WAYLAND	18.6	436	37	25,834	4.34	64.5	137	9363
LEXINGTON	17.8	534	44	22,007	6.01	67.9	60	9043
WINCHESTER	21.5	411	47	32,190	1.96	49.4	25	9572
NEEDHAM	20.5	499	37	35,257	2.90	53.7	58	9282
NEWTON	19.8	493	45	33,618	2.39	48.2	13	9008
BELMONT	21.7	423	48	42,765	0.62	44.1	5	8372
NATICK	24.0	347	39	24,840	3.10	55.7	45	7550
WELLESLEY	19.5	504	54	41,025	2.01	55.4	27	11478
AVERAGES	20.4	456	44	32,130	2.92	54.9	46	9209
EDUCATIONALLY COMPARABLE AVERAGES	20.0	481	43	33,556	3.57	55.8	55	9180
SUDBURY	19.1	500	16	22,291	6.42	68.5	181	8538

H. Libraries

Relatively major increases were requested in this account reflecting additional staff for relief fill-in and expanded hours of service. The Finance Committee has recommended reduction in the scope of these expansions and in the book purchasing level.

Sub-committees are now actively considering the best approach re the "New Library" relative to the extent and timing of such a project.

The Finance Committee is highly appreciative of the cooperation and resulting good communications that will derive from this approach initiated by the Library Trustees.

I. Parks and Recreation

The Parks and Recreation Department has evidenced considerable planning in this year's budget. This is an area in which Sudbury has not had the ability to provide any but the most modest type of financial support due to the overall financial picture.

The programs developed within these extremely limited resources reflect remarkable progress.

1. Recommend \$1400 for 4th of July parade and additional 4th of July events. This compares with an actual expenditure of \$1360 during 1964.
2. The increase includes \$200 additional salary for the Director, Mr. Kenneth Burt; one additional supervisor for the new playground, Horse Pond Road School; one week increase in the program and a 5¢ an hour pay increase. The total increase in cost for director, supervisor and playground instructor amounts to approximately 43% or \$2275. It is consistent with the increased services to the children of Sudbury in that the program is lengthened by one full week to an eight-week program and an additional playground is being opened at Horse Pond School.
3. The operating expenses of this account are recommended to remain approximately the same as during the calendar year 1964 (\$116 increase). The amount of the Red Cross swimming program for 1964 is recommended for assumption in full by the Town. The Red Cross will provide the director but Sudbury must pay its full proportionate share as established by the Lake Walden Associates. Last year 460 children participated in the program and approximately 140 Sudbury children could not be accommodated. The program this year will provide services for an additional 200 to 300 children.

The Finance Committee acknowledge with appreciation the services of Daniel P. Jameson, George F. Miller and John E. Taft, who in accepting other positions and responsibilities, resigned from the Committee this year. Particular appreciation is also in order to the sub-committee personnel who worked on the various projects assigned:

<i>Budget Category</i>	<i>Committee Member</i>	<i>Support</i>
A. General Government	Lawrence H. Homan	Harold A. Colpitts Sydney B. Self
B. Protection of Persons and Property	Robert W. Bierig	Harold A. Colpitts Richard W. Simmons
C. Health and Sanitation	Jack W. Swenson	
D. Highway Commission	Daniel D. Carter	Harold A. Colpitts
E. Public Welfare and Assistance	Jack W. Swenson	
F. Veterans' Services	Jack W. Swenson	
G. 1. Regional School	Robert W. Bierig	John A. Alexander Albert Berberian Lawrence H. Homan
2. Sudbury Schools	John A. Alexander	Robert W. Bierig Alfred C. Cron Ray C. Ellis Sydney B. Self
H. Libraries	Carlton W. Ellms, Sr.	Harold A. Colpitts
I. Parks and Recreation	Daniel D. Carter	Lawrence H. Homan
J. Unclassified and Reserve Fund	Lawrence H. Homan	Harold A. Colpitts Harold A. Colpitts Sydney B. Self
K. Debt Service	Lawrence H. Homan	Harold A. Colpitts Sydney B. Self
Up-dating and General Summary	George F. MacKenzie, Chairman	
Recording Secretary	Joan Ann Colpitts	

Respectfully submitted,

GEORGE F. MacKENZIE, Chairman
JOHN A. ALEXANDER
ROBERT W. BIERIG
DANIEL D. CARTER
CARLTON W. ELLMS, SR.
LAWRENCE H. HOMAN
JACK W. SWENSON

TOWN WARRANT

COMMONWEALTH OF MASSACHUSETTS

Middlesex, ss.



To either of the Constables of the Town of Sudbury:
GREETINGS:

In the name of the Commonwealth of Massachusetts, you are hereby required to notify and warn the inhabitants of the Town of Sudbury, qualified to vote in Town elections, to meet at the Town Hall in said Town on Monday, March 1, 1965, at seven o'clock in the forenoon; then and there to choose by official ballot in accordance with law, one Moderator for one year; one member of the Board of Health for two years, to fill vacancy; one member of the Board of Selectmen, a Town Clerk, one member of the Board of Assessors, a Treasurer, a Collector of Taxes, one member of the Board of Public Welfare, a Constable, two members of the Goodnow Library Committee, one member of the Board of Health, one member of the Sudbury School Committee, one member of the Lincoln-Sudbury Regional School District Committee, one member of the Highway Commission, and two members of the Board of Park and Recreation Commissioners, all for three years; and one member of the Planning Board for five years.

The polls will be open at seven o'clock in the forenoon and will be closed at eight o'clock in the evening.

And you are required to notify and warn the inhabitants of said Town qualified to vote in Town affairs to meet at the Peter Noyes School Auditorium in said Town on Wednesday, March 3, 1965, at eight o'clock in the evening, then and there to act on the following articles:

Article 1. To hear the reports of the Town Officers and Committees and act thereon.

Subject to the approval of the voters present, this meeting will be adjourned at 10:45 P. M. to March 4, 1965, at 8:00 P. M.

in this same hall. If further adjournments are necessary, the dates will be March 10 and March 11.

Article 2. To see if the Town will vote to amend the Personnel Administration Plan By-Laws by deleting XI, 7, (1) and XI, 7, (3) and substituting:

Article XI, Section 7 Paragraph (1) Paid Holidays. Permanent, full time employees are entitled to time off with pay on New Year's Day, Washington's Birthday, Patriots' Day, Memorial Day, Independence Day, Labor Day, Columbus Day, Veterans' Day, Thanksgiving Day, and Christmas Day. If any such holiday falls on Sunday, such an employee shall be entitled to time off with pay on the following Monday; if on Saturday, he shall be entitled to time off with pay on the preceding Friday; if required to work on such a holiday, or if such a holiday falls during his regularly scheduled time off or vacation, such an employee shall be entitled to equivalent time off with pay at a time approved by his superior.

Paragraph (3) Vacation. A permanent full time employee who has been employed by the Town for more than six months, but less than one year, is entitled to one week of vacation with pay. Such an employee if employed by the Town for one year, but less than ten years, is entitled to two weeks of vacation with pay. Employees, who have completed ten years of service as permanent full time employees of the Town, shall be entitled to three weeks of vacation with pay. Leave granted for temporary military service may not be charged against an employee's vacation without his consent.

And adding XI, 7, Paragraph (5) Reserve Military Duty. An employee, who is called upon to report for Reserve Military duty, shall be paid the difference between the compensation he would have received from the Town and his military pay and allowances upon presentation of a pay voucher to the office of the Town Accountant. Such pay for Reserve duty is not to exceed seventeen (17) days' pay.

And adding to the present Schedule A and B, Part-Time and Temporary Employees:

Junior Engineering Aid (Part Time)	\$1.50 per hour
Junior Librarian's Assistant	\$1.35 per hour
Election Warden	\$2.00 per hour
Deputy Election Warden	\$2.00 per hour
Pass any vote or take any action relative thereto.	

Submitted by: Personnel Board.

Finance Committee Report:

It should be noted that in the proposed amendments to the personnel by-law considerable liberalism of benefits are recommended. The Finance Committee feels that the effects of this article should be taken into consideration as a factor in any future wage rate adjustments.

Article 3. To see if the Town will grant and appropriate or transfer from available funds the following sums or any other sums of money for any and all necessary Town purposes for the ensuing year, and to fix the salaries of all elected officials for the year 1965 in accordance with the following schedule. Pass any vote or take any action relative thereto.

Submitted by the Finance Committee.

A. GENERAL GOVERNMENT

	Available 1964*	1964 1964	Requested 1965	Recom- mended 1965
Ancient Records,				
Committee for Preservation of				
1. Expenses	\$50.00	\$50.00	\$100.00	\$100.00
Assessors Office				
2. Salaries				
Chairman	\$900.00			
Clerk	800.00			
Member	800.00	2,500.00	2,800.00	2,500.00
Clerk Hire		9,000.00	8,812.94	9,343.00
3. Travel Allowance	750.00	750.00	750.00	750.00
4. Other Expenses	1,900.00	1,868.77	2,150.00	1,950.00
Custodian Town Property				
5. Expenses	50.00	17.00	50.00	50.00
Elections and Registrations				
6. Salaries — \$50.00/member	150.00	150.00	150.00	150.00
7. Registrars' Expense	3,300.00	1,297.71	5,300.00	5,300.00
8. Elections and Town Meeting	5,138.00	5,138.00	4,800.00	4,800.00
Engineering Office				
9. Salaries	15,200.00	14,638.88	18,017.00	17,117.00
10. Travel Expense	800.00	800.00	300.00	300.00
11. Other Expenses	900.00	900.00	1,150.00	1,150.00
Executive Secretary				
12. Salary	8,700.00	7,038.00	8,700.00	8,700.00
13. Expenses	500.00	290.74	700.00	700.00
Finance Committee				
14. Salary (Secretary)	1,000.00	938.60	1,100.00	1,100.00
15. Expenses	1,000.00	888.14	1,175.00	1,175.00
Historic Districts Commission				
16. Expenses	50.00	10.50	25.00	25.00
Historic Structures Commission				
17. Hosmer House Contract	2,000.00	2,000.00	2,000.00	2,000.00
18. Expenses	9,341.57	8,875.66	1,225.00	875.00

	Funds Available 1964*	Charges 1964	Funds Requested 1965	Recom- mended 1965
Industrial Development Commission				
19. Expenses	500.00	320.00	500.00	500.00
Law				
20. Town Counsel Retainer	4,500.00	4,500.00	4,500.00	1,125.00A
21. Other Legal Expenses	12,072.94	12,072.94	5,800.00	3,300.00
Appeals			8,000.00	8,000.00
Moderator				
22. Salary — \$10.00/session	100.00	80.00	100.00	100.00
Permanent Building Committee				
23. Salary (clerical)				250.00
24. Expenses	300.00	203.17	400.00	50.00
Personnel Board				
25. Salary (clerical)	400.00	265.00	400.00	400.00
26. Expenses	200.00	38.83	200.00	200.00
Planning Board				
27. Salary (clerical)	1,000.00	998.70	1,000.00	1,000.00
28. Expenses	2,600.00	914.24	3,717.90	1,670.00
Selectmen				
29. Salaries				
Chairman	\$600.00			
Clerk	500.00			
Member	500.00	1,600.00	1,600.00	1,600.00
30. Out-of-State Travel	300.00	0	300.00	300.00
31. Travel Expenses	50.00	50.00	200.00	200.00
32. Other Expenses	4,300.70	3,067.59	2,000.00	2,000.00
Tax Collector's Office				
33. Salaries				
Collector	4,500.00	4,500.00	5,000.00	4,800.00
Clerical	5,100.00	5,099.03	5,200.00	0
34. Travel Expense	450.00	142.70	0	300.00
35. Expenses	1,400.00	855.87	1,428.00	1,000.00
Town Accountant				
36. Salary	3,900.00	3,825.00	5,400.00	3,900.00
37. Expenses	150.00	133.17	210.00	210.00
Town Administration Committee				
38. Salary (clerical)	200.00	0	200.00	200.00
39. Expenses	200.00	14.30	200.00	200.00
Town Clerk's Office				
40. Salary	3,500.00	3,500.00	3,500.00	3,500.00
41. Expenses	700.00	698.46	685.00	650.00
Town Hall — General				
42. Salaries				
Clerical	25,400.00	23,917.49	36,673.00	35,423.00
Custodial	7,000.00	6,534.51	8,600.00	8,600.00
43. Building Expense and Repairs	10,933.43	10,924.48	14,240.00	14,240.00
43a. Office Renovations	0	0	12,000.00	0
(Finance Committee recommends separate discussion on this item)				
44. Office Supplies	3,000.00	2,967.55	3,500.00	3,000.00
45. Office Equipment Maintenance	1,500.00	1,115.24	1,300.00	1,100.00

	Available 1964*	Charges 1964	Requested 1965	Recom- mended 1965
46. Office Equipment Purchase	1,800.00	1,692.35	835.00	835.00
47. Telephone Account	5,500.00	4,824.54	5,000.89	5,000.00
Treasurer's Office				
48. Salary	4,000.00	4,000.00	6,000.00	4,000.00
49. Tax Title Expense	50.00	45.00	50.00	50.00
50. Bond and Note Issue Expense	200.00	28.00	200.00	50.00
51. Other Expenses	500.00	489.10	989.00	750.00
	\$170,236.64	\$156,382.20	\$198,760.90	\$157,245.00

* Funds available include regular and special appropriations, transfers and balances brought forward from previous year. Account numbers have been changed because of the additional line item requests.

† \$653.54 is carried forward from 1964.

Δ Legal Retainer through March 31st.

Finance Committee Report:

Funds have been set aside in the reserve fund to cover potential salary rate changes now under consideration by the Personnel Board.

Move: That the sum of \$ be appropriated for the various accounts listed under Section A, General Government.

B. PROTECTION OF PERSONS AND PROPERTY

Board of Appeals

1. Salary (clerical)	\$1,500.00	\$800.57	\$1,000.00	\$900.00
2. Expenses	600.00	451.96	560.00	500.00

Building Inspector

3. Expenses	300.00	298.51	300.00	300.00
-------------------	--------	--------	--------	--------

Civil Defense

4. Expenses	700.00	302.41	1,000.00	500.00
-------------------	--------	--------	----------	--------

Conservation Commission

5. Expenses	2,300.00	2,263.12	970.00	500.00
-------------------	----------	----------	--------	--------

Dog Officer

6. Salary	850.00	850.00	850.00	850.00
7. Expenses	815.00	814.70	800.00	800.00

Earth Removal Board

8. Expenses	50.00	10.23	0	25.00
-------------------	-------	-------	---	-------

Fire Department

9. Salaries	110,978.00	110,977.60	122,606.00	114,431.00
10. Operating Expenses	3,750.00	3,748.59	3,650.00	3,650.00
11. Uniform Allowance	300.00	300.00	300.00	180.00
12. New Equipment	2,500.00	2,496.19	2,400.00	2,400.00
13. Hydrant Rental	13,055.00	13,055.00	13,685.00	13,685.00
14. Hydrant Rental Supplement	10,000.00	10,000.00	10,000.00	10,000.00
15. Auto Replacement	0	0	2,800.00	2,800.00

Fire and Police Alarm System

16. Radio Maintenance	1,300.00	1,276.77	1,300.00	1,300.00
17. Fire Alarm Extension	1,200.00	1,199.94	1,100.00	1,100.00

	Funds Available 1964*	Charges 1964	Funds Requested 1965	Recom- mended 1965
Plumbing and Gas Inspector				
18. Salary (75% of fees)	1,800.00	1,719.40	1,900.00	1,900.00
Police Department				
19. Salaries	\$91,650.00	\$88,415.86	\$102,103.00	\$93,016.00
20. Paid Details (Reimbursed)	10,000.00	4,900.50	7,500.00	5,000.00
21. Operating Expenses	9,400.00	9,384.44	10,525.00	10,425.00
22. New Equipment	0	0	2,755.00	1,755.00
(Finish Back Room in 1964 Budget)	750.00	749.29	0	0
23. Uniform Allowance	1,325.00	1,320.22	1,250.00	800.00
24. Cruiser Replacement	7,000.00	4,468.79	3,000.00	3,000.00†
Sealer of Weights and Measures				
25. Salary	250.00	250.00	250.00	250.00
26. Expenses	250.00	20.75	150.00	150.00
	<u>\$272,633.00</u>	<u>\$260,074.84</u>	<u>\$292,754.00</u>	<u>\$270,217.00</u>

* Funds available include regular and special appropriations, transfers and balances brought forward from previous year.

† \$1,531.21 is carried forward from 1964.

Move: That the sum of \$270,217.00 be appropriated for the various accounts as listed under Section B., Protection of Persons and Property; and that the Fire Department Auto Replacement under item 15 and the Police Department Cruiser Replacements under item 24 shall be the subject of public bids; the terms of such bids shall require in each instance the posting of either a performance bond or certified check in the amount of \$100.00 to guarantee performance; and that the present police cruisers be traded in against the purchase price of these items under Police Cruiser Replacement.

C. HEALTH AND SANITATION

Animal Inspector				
1. Salary	\$300.00	\$300.00	\$300.00	\$300.00
Board of Health				
2. Dental Clinic	2,300.00	2,183.90	2,000.00	2,000.00
3. District Nursing Association Fees	4,800.00	4,800.00	5,854.00	5,854.00
4. Inspector's Fee	2,800.00	2,480.64	2,800.00	2,800.00
5. Other Expenses	2,000.00	1,010.30	2,000.00	1,846.00
Board of Selectmen				
6. Mosquito Control	7,000.00	7,000.00	7,500.00	7,500.00
	<u>\$19,200.00</u>	<u>\$17,774.84</u>	<u>\$20,454.00</u>	<u>\$20,300.00</u>

* Funds available include regular and special appropriations, transfers and balances brought forward from previous year.

Mental Health Association membership for the Town of Sudbury is included in the Sudbury and Regional Schools budgets in an amount of \$2,225.00.

Finance Committee Report:

Salaries in this section of the budget recommended for 1965 are:

Position	Full/Part Time	Annual Rate
Animal Inspector	Part	\$300.00
Board of Health Inspector	Part	2,800.00

2 Part Time \$3,100.00

- C-3 The budget request for the Sudbury Public Health Nursing Associates is \$1,054 higher than requested for 1964 and reflects a higher case load entailing an extra nurse.
- C-2 The budget request for the Dental Clinic is down \$300 because of a greater number of contributions from those who can pay.
- C-6 The \$7,500 requested for Mosquito Control is in accordance with projected needs and is a regular assessment for Sudbury's share of the operating costs of the East Middlesex Mosquito Control Commission.

Move: That the sum of \$23,000.00 be appropriated for the various accounts as listed under Section C. Health and Sanitation.

D. HIGHWAY COMMISSION

	Funds Available 1964*	Charges 1964	Funds Requested 1965	Recom- mended 1965
Highway Administration				
1. Salaries				
Highway Commissioners				
Chairman	\$400.00			
Member (4)	300.00	\$1,350.00	\$1,600.00	\$1,600.00
Highway Superintendent	7,850.00	7,850.00	8,000.00	8,000.00
Foreman —				
Highway Department	0	0	4,650.00	0
Tree and Cemetery Department ..	0	0	4,840.00	4,840.00
Clerical — Part-time	1,500.00	1,308.47	2,411.50	2,411.50
2. Expenses	1,475.00	1,221.72	3,630.00	670.00
3. Road Equipment Operating Expenses	12,000.00	11,784.34	13,000.00	13,000.00
4. Highway Building Maintenance	1,500.00	1,136.72	2,000.00	1,500.00
5. Bridge Repair	3,000.00	1,944.45	3,750.00	3,750.00
6. General Highway Maintenance	17,000.00	16,377.04	18,300.00	16,300.00
7. Cemetery Operating Expense	1,050.00	1,049.18	1,200.00	1,200.00
8. Cemetery and Memorial Parks Maintenance	1,200.00	1,192.51	1,200.00	1,200.00
9. Chapter 81 Maintenance	9,750.00	9,749.15	9,875.00	9,875.00
10. Chapter 90 Maintenance	3,000.00	2,999.71	3,000.00	3,000.00
11. Chapter 90 Construction	8,000.00	5,980.20	8,000.00	8,000.00
12. Street and Traffic Lights	11,500.00	11,228.62	13,500.00	12,500.00
13. Street Drainage Improvement	4,500.00	3,961.26	8,300.00	6,100.00
14. Snow and Ice Removal	27,500.00	27,499.83	34,200.00	31,200.00
15. Sanitary Landfill	11,500.00	11,500.00	11,500.00	11,500.00
16. Brush and Stump Disposal	2,500.00	1,998.33	2,500.00	2,500.00
Tree Department**				
17. Tree and Brush Control	6,127.25	6,126.28	4,000.00	4,000.00
18. Tree Planting	500.00	449.72	2,000.00	2,000.00

	Funds Available 1964*	Charges 1964	Funds Requested 1965	Recom- mended 1965
19. Insect and Pest Control	1,500.00	1,485.35	1,500.00	1,500.00
Appropriation by Town	\$134,302.25	\$128,192.88	\$162,956.50	\$146,646.50
State and County Aid				
20. Chapter 81 — Maintenance	21,450.00	21,450.00	21,725.00	21,725.00
21. Chapter 90 — Maintenance	3,000.00	3,000.00	3,000.00	3,000.00
22. Chapter 90 — Construction	24,000.00	23,996.73	24,000.00	24,000.00
	\$182,752.25	\$176,639.61	\$219,618.50	\$195,370.50

* Funds available include regular and special appropriations, transfers and balances brought forward from previous year.

† In addition to the \$8,000.00 appropriation recommended for 1964, \$26,019.80 has been carried forward from 1964.

** Previously included under B. Protection of Persons and Property and transferred, under Article 42, of the adjourned Annual Town Meeting of March 19, 1964, by unanimous vote of the meeting to be included under the Highway Commission.

Move: That the sum of \$139,145.00 be appropriated for the various accounts as listed under Section D. Highway Commission.

E. PUBLIC WELFARE AND ASSISTANCE

Welfare Administration

1. Salaries	\$1,500.00	\$1,500.00	\$2,100.00	\$2,100.00†
2. Expenses	400.00	400.00	400.00	400.00†

Public Assistance

3. General Relief	3,000.00	2,213.45	3,000.00	3,000.00†
4. Old Age Assistance	8,000.00	8,000.00	4,000.00	4,000.00†
5. Medical Assistance to the Aged	16,000.00	16,000.00	9,000.00	9,000.00†
6. Disability Assistance	1,000.00	1,000.00	1,000.00	1,000.00†
7. Aid to Dependent Children	2,000.00	2,000.00	2,000.00	2,000.00†
	\$31,900.00	\$31,900.00	\$21,500.00	\$21,500.00

* Funds available include regular and special appropriations of the Town; these amounts do not include Federal Aid carried forward.

† In addition to the amounts recommended for 1964 an aggregate amount of \$20,290.42 representing Federal funds has been carried forward from 1964.

Finance Committee Report:

Salaries in this section of the budget, recommended for 1965 are:

Position	Full/Part Time	Annual Rate
Welfare — Director	Part	
Clerk	Part	

2 Part Time \$2,100.00

The \$2,100 reflects the Town's share of this expense.

Move: That the sum of \$2,500.00 be appropriated for the various accounts as listed under Welfare Administration and

that the sum of \$19,000.00 be appropriated for Public Assistance.

F. VETERANS' SERVICES

	Funds Available 1964*	Charges 1964	Funds Requested 1965	Recom- mended 1965
Veterans' Agent				
1. Salary	\$500.00	\$500.00	\$500.00	\$500.00
2. Expenses	50.00	50.00	50.00	50.00
3. Veterans' Benefits	8,000.00	4,775.04	5,000.00	5,000.00
	<u>\$8,550.00</u>	<u>\$5,325.04</u>	<u>\$5,550.00</u>	<u>\$5,550.00</u>

* Funds available include regular and special appropriations, transfers and balances brought forward from previous year.

Finance Committee Report:

Salaries in this section of the budget recommended for 1965 are:

Position	Full/Part Time	Annual Rate
Veterans' Agent	Part	\$500

The salary provided herein is in accordance with the recommendation of the Personnel Board.

The budget request for Veterans' Benefits for 1965 is lower than 1964 to reflect decreased activity.

Move: That the sum of \$5,550.00 be appropriated for the various accounts listed under Section F. Veterans' Services.

G. SCHOOLS

	Funds Available 1964*	Charges 1964	Funds Requested 1965	Recom- mended 1965
Regional High School				
1. Assessment	\$578,329.40	\$578,329.40	\$646,282.14	\$646,282.14
Sudbury Public Schools				
2. Salaries and Expenses	1,226,731.23	1,241,594.98	1,441,586.00	1,391,586.00
3. School Outlay				
4. Evening Use	8,500.00	7,806.20	8,500.00	8,500.00
5. Out-of-State Travel	1,000.00	969.40		
TOTAL SCHOOL COSTS	<u>\$1,814,560.63</u>	<u>\$1,828,699.98</u>	<u>\$2,096,368.14</u>	<u>\$2,046,368.14</u>
6. Less Federal Aid	53,731.23	68,595.31	27,552.00	33,000.00
Town Appropriation	<u>\$1,760,829.40</u>	<u>\$1,760,104.67</u>	<u>\$2,068,816.14</u>	<u>\$2,013,368.14</u>

* Funds available include regular and special appropriations, transfers and balances brought forward from previous year.

Blue Cross/Blue Shield Group Insurance covering school personnel has been grouped with all similar accounts from other departments in Budget Section J-6.

Note: As of December 31, 1964 a balance of \$9,698.73 remained unexpended from available funds.

EXHIBIT 1

THE 1965 BUDGET

SUDBURY PUBLIC SCHOOLS

	Available 1964	Charges 1964	Requested 1965	Recom- mended 1965
1000 ADMINISTRATION	47,946.00	52,622.00	51,884.00	
1100 School Committee	290.00	238.00	730.00	
1200 Superintendent's Office ..	47,656.00	52,384.00	51,154.00	
2000 INSTRUCTION	950,219.00	933,062.00	1,070,203.00	
2100 Supervision	27,200.00	28,673.00	29,348.00	
2200 Principals	89,481.00	90,708.00	101,992.00	
2300 Teachers	779,528.00	761,682.00	873,233.00	
2400 Textbooks	23,738.00	23,191.00	21,434.00	
2500 Library	16,045.00	14,338.00	9,516.00	
2600 Audio-Visual	1,000.00	1,465.00	1,873.00	
2700 Guidance	13,227.00	13,005.00	19,968.00	
2800 Pupil Personnel Services ..	0	0	12,841.00	
3000 OTHER SCHOOL SERVICES ..	107,226.00	105,201.00	118,935.00	
3100 Attendance	200.00	200.00	200.00	
3200 Health Services	13,090.00	13,064.00	15,133.00	
3300 Pupil Transportation	93,111.00	90,581.00	96,152.00	
3400 Food Services	0	313.00	6,475.00	
3500 Student Activities	825.00	1,043.00	975.00	
4000 OPERATION AND MAINTENANCE OF PLANT	131,934.00	132,273.00	181,461.00	
4100 Operation of Plant	103,439.00	104,422.00	140,962.00	
4200 Maintenance of Plant	28,495.00	27,851.00	40,499.00	
7000 ACQUISITION AND IMPROVEMENT (Outlay) ..	5,731.23	5,731.23	18,215.00	
7200 Improvement of Plant			4,036.00	
7300 Acquisition of Fixed Assets			14,179.00	
9000 PROGRAMS WITH OTHER SYSTEMS	375.00	1,473.00	888.00	
9100 Contracted Services	375.00	1,473.00	375.00	
TOTAL OPERATING EXPENSES ..	1,243,431.23	1,230,362.23	1,441,586.00	1,391,586.00
Less: Federal aid applied to Operating Budget	53,731.23	57,362.56	27,552.00	33,000.00
NET OPERATING BUDGET	1,189,700.00	1,172,999.67	1,414,034.00	1,358,586.00
Amount appropriated	1,173,000.00	1,172,999.67		
	(16,700.00)			

Other Federal Aid Fund Expenditures

Contingencies		11,232.75		
Community Use of Schools	8,500.00	7,806.20	8,500.00	8,500.00
Out of State Travel	1,000.00	969.40	*	

* Addendum No. 1 — Out of State Travel — Within this budget, placed in the appropriate categories, is the sum of \$1,600 for out of state travel. It is suggested that this sum may need to be voted separately.

**SUDBURY PUBLIC SCHOOLS
FEDERAL AID ACCOUNTS**

PUBLIC LAW 874

Balance on hand, January 1, 1964	\$43,142.42
Receipts during 1964	28,831.00
	<hr/> \$71,973.42

Expenditures:

Applied to Operating Account	\$45,095.33	
Outlay	5,731.23	
To open Noyes School	6,536.00	
Contingencies	11,232.75	68,595.31
	<hr/>	<hr/>

Balance on hand, December 31, 1964	\$3,378.11
--	------------

PUBLIC LAW 864

Balance on hand, January 1, 1964	4,310.65
Receipts during 1964	2,009.97
	<hr/>

Balance on hand, December 31, 1964	\$6,320.62
	<hr/>

TOTAL BALANCE IN FEDERAL AID, on hand December 31, 1964	\$9,698.73
--	------------

EXHIBIT II**THE 1965 BUDGET****LINCOLN-SUDBURY REGIONAL SCHOOL DISTRICT**

	Budget 1964	Charges 1964	Requested 1965	Recom- mended 1965
1000 ADMINISTRATION				
1100 School Committee	\$1,050.00	\$975.00	\$1,050.00	\$1,050.00
1200 Superintendent's Office ..	28,337.00	29,792.00	34,450.00	34,450.00
	<hr/>	<hr/>	<hr/>	<hr/>
	\$27,387.00	\$30,767.00	\$35,500.00	\$35,500.00
2000 INSTRUCTION				
2200 Principals	\$37,431.00	\$38,750.00	\$40,781.00	\$40,781.00
2300 Teaching	440,234.00	430,410.00	491,190.00	491,190.00
2400 Textbooks	12,208.00	12,208.00	10,072.00	10,072.00
2500 Library Service	12,578.00	12,778.00	15,552.00	15,552.00
2600 Audio Visual	2,380.00	2,380.00	3,994.00	3,994.00
2700 Guidance Services	34,765.00	35,471.00	38,184.00	38,184.00
	<hr/>	<hr/>	<hr/>	<hr/>
	\$535,596.00	\$531,997.00	\$599,773.00	\$599,773.00
3000 OTHER SCHOOL SERVICES				
3100 Attendance	\$350.00	\$350.00	\$550.00	\$550.00
3200 Health Services	4,498.00	4,498.00	5,759.00	5,759.00
3300 Pupil Transportation	68,888.00	68,661.00	71,835.00	71,835.00
3400 Food Services	3,588.00	3,588.00	3,767.00	3,767.00
3500 Student Body Activities ..	7,041.00	5,729.00	7,920.00	7,920.00
	<hr/>	<hr/>	<hr/>	<hr/>
	\$84,365.00	\$82,826.00	\$89,831.00	\$89,831.00
4000 OPERATION AND MAINTENANCE OF PLANT				
4100 Operation of Plant	\$70,228.00	\$70,341.00	\$74,140.00	\$74,140.00
4200 Maintenance of Plant	14,997.00	15,351.00	13,865.00	13,865.00
	<hr/>	<hr/>	<hr/>	<hr/>
	\$85,225.00	\$85,692.00	\$88,005.00	\$88,005.00

5000 FIXED CHARGES

5100 Employee's retirement program	\$5,512.00	\$4,317.00	\$4,915.00	\$4,915.00
5200 Insurance Program	11,840.00	9,263.00	12,284.00	12,284.00
	<u>\$17,352.00</u>	<u>\$13,580.00</u>	<u>\$17,199.00</u>	<u>\$17,199.00</u>
9000 PROGRAMS WITH OTHER SYSTEMS				
9100 Programs with other systems in Massachusetts	\$2,295.00	\$2,650.00	\$2,960.00	\$2,960.00
TOTAL OPERATING BUDGET	<u>\$756,220.00</u>	<u>\$747,512.00</u>	<u>\$833,268.00</u>	<u>\$833,268.00</u>
Voted from Federal Aid Accounts			(20,000.00)	(20,000.00)
	<u>\$756,220.00</u>	<u>\$747,512.00</u>	<u>\$813,268.00</u>	<u>\$813,268.00</u>
November 30, 1964				

FEDERAL AID ACCOUNTS

Balance on hand, January 1, 1964 — PL874	\$11,257.77
Receipts:	
1963-64 school year	23,750.00
	<u>\$35,007.77</u>
Disbursements:	
Estimated expenditures and commitments	21,047.00
Estimated balance, December 31, 1964	\$13,960.77
Balance on hand, January 1, 1964 — PL864 (NDEA)	10,638.58
Receipts:	
1962-63 applications	\$2,694.34
1963-64 applications	3,151.89
	5,846.23
Estimated receipts payable on present applications:	
1963-64 applications	3,600.00
	<u>\$20,084.81</u>
Estimated balance, December 31, 1964	\$34,045.58
Total estimated balance, December 31, 1964	<u>\$34,045.58</u>
Estimated receipts under PL874 for 1964-65 school year	\$20,000.00

The Committee has voted to apply \$20,000 of Federal Aid funds to the 1965 Operating Budget, to purchase Outlay Equipment items for 1965 amounting to \$8,886, and to use the balance of these funds for contingency purposes as it has not carried contingency items in the 1965 budget.

October 29, 1964

I Apportionment of Operating Expense

A. Operating Expense

1. The operating expense budget for 1965 is apportioned initially according to the apportionment factors as of the preceding October 1st.

	Lincoln	Sudbury	Total
Region 9-12	263	688	951*
Vocational		4	4
	<u>263</u>	<u>692</u>	<u>955</u>
Percentage	27.54%	72.46%	

* Excludes two tuition students

2. The operating expense budget for 1963 is reapportioned on the basis of the average membership in grades 9-12 for the 1963-64 school year. The estimated surplus of receipts for 1963 is adjusted to the actual surplus of receipts for 1963.

	Lincoln	Sudbury	Total
Region 9-12	247.32	637.36	884.68
Vocational		3.32	3.32
	<u>247.32</u>	<u>640.68</u>	<u>888.00</u>
Percentage Initial	27.85%	72.15%	
Apportionment	29.13%	70.87%	

Reapportionment of 1963 operating expense budget and adjustment of 1963 surplus of receipts:

	Lincoln	Sudbury	Total
1963 Apportionment	\$202,452.63	\$492,544.37	\$694,997.00
1963 Reapportionment	193,556.65	501,440.34	694,997.00
Estimated 1963 Surplus of Receipts	26,966.51	65,606.49	92,573.00
Actual 1963 Surplus of Receipts	26,644.39	69,026.66	95,671.05
Net 1963 Apportionment	175,486.12	426,937.88	602,424.00
Adjusted Net 1963 Apportionment	166,912.27	432,413.68	599,325.95
Adjustment	(8,573.85)	5,475.80	(3,098.05)

3. The estimated surplus of receipts for 1964 is apportioned on the basis of the October 1 enrollment of 1963 which is 247 for Lincoln (27.60%) and 638 for Sudbury (72.40%).

Estimated budget surplus	\$8,700
Miscellaneous receipts	7,200
Transportation	66,830
	<u>\$82,730</u>

Lincoln	Sudbury
\$22,833.48	\$59,896.52

SUMMARY — Operating Expense Apportionment

	Lincoln	Sudbury	Total
A.1. Apportionment 1965	\$223,974.01	\$589,293.99	\$813,268.00
A.2. Reapportionment 1963 and adjustment of Surplus of Receipts of 1963	(8,573.85)	5,475.80	(3,098.05)
A.3. Estimated Surplus of Receipts 1964	<u>(22,833.48)</u>	<u>(59,896.52)</u>	<u>(82,730.00)</u>
	\$192,566.68	\$534,873.27	\$727,439.95

II Apportionment of Outlay

Outlay expense budget for 1965 is to be paid from the Federal Aid Account PL874.

III Apportionment of Debt Service and State Construction Aid

A. Debt Service

- The total Debt Service is apportioned on the basis of the October 1 enrollment in grades 9 to 12 preceding the due date of such installment which is 263 for Lincoln (27.54%) and 692 for Sudbury (72.46%).
- The surplus of receipts for 1964 is apportioned according to the apportionment factors as of October 1, 1963 which is 247 for Lincoln (27.60%) and 648 for Sudbury (72.40%).

Lincoln	Sudbury	Total
(\$414)	(\$1,086)	(\$1,500)

3. Other Operating Expenses	4,000.00	3,811.70	4,275.00	4,150.00
Total Library Cost	\$31,111.75	\$29,054.61	\$36,765.00	\$31,820.00
Less: Estimated receipts from other sources				
4. State Aid	1,802.53	1,802.53	1,860.00	1,860.00
5. Trust Funds	1,597.47	1,597.47	1,500.00	1,500.00
Appropriation by Town	\$27,711.75	\$25,654.61	\$33,405.00	\$28,460.00

* Funds available include regular and special appropriations, transfers and balances brought forward from previous year.

Finance Committee Report:

1. The increase in the salaries account reflects a 12 hour per week increase in the time the Goodnow Library will be open for the use of the Town people.
2. In view of the present ratio of books per capita available in the library, it is recommended that the appropriation for the purchase of books in 1965 be retained at the amount appropriated in 1964.

Move: That the sum of \$28,277.00 be appropriated for the various accounts as listed under Section H. Libraries.

I. PARKS AND RECREATION

	Funds Available 1964*	Charges 1964	Funds Requested 1965	Recom- mended 1965
Celebrations				
1. Fourth of July	\$2,500.00	\$1,360.34	\$1,500.00	\$1,400.00
Parks and Playgrounds				
2. Salaries	6,000.00	5,737.50	7,998.00	8,000.00
3. Expenses	7,700.00	7,657.90	7,396.00	7,244.00
	\$16,200.00	\$14,755.74	\$16,894.00	\$16,644.00

* Funds available include regular and special appropriations, transfers and balances brought forward from previous year.

Move: That the sum of \$16,644.00 be appropriated for the various accounts as listed under Section I., Parks and Recreation.

J. UNCLASSIFIED AND RESERVE FUND

	Available 1964	Charges 1964	Requested 1965	Recom- mended 1965
Unclassified				
1. Fidelity Bond and Expense	\$800.00	\$722.75	\$800.00	\$800.00
2. Incidentals	500.00	321.91	500.00	300.00
3. Insurance	28,000.00	18,509.18	14,000.00	14,000.00
4. Memorial Day Expense	700.00	557.44	729.00	730.00

5. Town Report	5,000.00	4,914.25	5,000.00	5,000.00
6. Blue Cross/Blue Shield	16,500.00	15,775.65	17,852.00	17,852.00
Sub-total	\$51,500.00	\$40,801.18	\$38,881.00	\$38,682.00
7. Reserve Fund	28,000.00	26,838.19	43,000.00	43,000.00
	\$79,500.00	\$67,639.37	\$81,881.00	\$81,682.00

* Funds available include regular and special appropriations, transfers, and balances brought forward from previous year.

Move: That the sum of \$38,682.00 be appropriated for the various accounts (J. 1-6) as listed under Unclassified; and that the sum of \$. be appropriated for the Reserve Fund (J-7), \$ of said amount to be transferred from Overlay Reserve.

K. DEBT SERVICES

	Available 1964*	Charges 1964	Requested 1965	Recom- mended 1965
1. Interest, Temporary Loans	\$8,500.00	\$8,500.00	\$12,000.00	\$12,000.00
2. Interest, Bonds (School)	122,539.00	122,538.50	114,526.00	114,526.00
3. Interest, Bonds (Other)	7,246.00	7,246.00	5,718.00	5,718.00
4. Debt Reduction (Schools)	247,000.00	247,000.00	237,000.00	237,000.00
5. Debt Reduction (Other)	57,000.00	57,000.00	53,000.00	53,000.00
	\$442,265.00	\$442,284.50	\$422,244.00	\$422,244.00

* Funds available include regular and special appropriations, transfers, and balances brought forward from previous year.

Finance Committee Report:

These recommendations are in accordance with the schedule of interest and bond retirements.

Move: That the sum of \$422,244.00 be appropriated for the various accounts as listed under Section K. Debt Services.

L. STATUTORY ASSESSMENTS

	Available 1964	Charges 1964	Estimated 1965	Recom- mended 1965
State Parks and Reservations	\$3,952.68	\$4,307.36	\$5,000.00	\$5,000.00
Assessment for County Tax	20,578.98	21,941.20	23,000.00	23,000.00
Middlesex County Retirement	24,015.16	24,015.16	27,000.00	27,000.00
Middlesex County T. B. Hospital	551.23	551.23	1,000.00	1,000.00
State Audit	0	127.95	300.00	300.00
	\$49,098.05	\$50,942.89	\$56,300.00	\$56,300.00

Finance Committee Report:

These items are included in the budget by the Assessors in determining the tax rate and are not subject to control by the Town Meeting.

Move: That all salaries and wage rates provided under this article be effective as of April 1, 1965, and

That all travel expenses provided under the article be paid at the rate of eight cents per mile for which proper vouchers shall be submitted.

Move: That the following unexpended appropriation accounts from Special Articles be closed and the funds thereof be applied to the aggregate of the budgets appropriated under this article:

Move: That all unexpended appropriation accounts, specific or otherwise as listed in the 1964 budget, except as hereinafter listed, be closed and funds thereof be transferred to Surplus Revenue:

A-32	Selectmen Expense — Loring School Walkway	\$653.54
B-24	Police Dept. Cruiser Replacement	2,531.21
D-11	Chapter 90 — Construction	26,019.80

Article 4. To see if the Town will vote to authorize the Treasurer, with the approval of the Selectmen, to borrow money from time to time in anticipation of the revenue of the financial year beginning January 1, 1966, and to issue a note or notes therefor payable within one year, and to renew any note or notes as may be given for a period of less than one year, in accordance with Section 4, Chapter 44, General Laws. Pass any vote or take any action relative thereto.

Submitted by the Treasurer.

Finance Committee Report:

This article follows a usual procedure and allows for the interim financing of Town affairs between the first of the year and the collection of funds due from tax levy.

Move: In the words of the article.

Article 5. To see if the Town will vote to grant or appropriate the sum of \$1,537.35, or any other sum, for the purpose of paying unpaid bills in accordance with the following schedule:

Planning Board Expenses	\$397.00
Tree and Brush Control Expenses	740.00
Other Legal Expense	400.00
	<hr/>
	\$1,537.35

Pass any vote or take any action relative thereto.
Submitted by the Town Accountant.

Finance Committee Report:
To be made at the meeting.

Article 6. To see if the Town will vote to transfer the sum of \$48,725.00 for the items listed below from Surplus Revenue to meet the State and County share of the costs of the Highway Department, the reimbursements from the State and County to be restored upon their receipt to Surplus Revenue.

Project — Chapter 90	State	County
Maynard Road	\$16,000.00	\$8,000.00
Maintenance	1,500.00	1,500.00
Chapter 81 — Maintenance	21,725.00	

Pass any vote or take any action relative thereto.
Submitted by the Finance Committee.

Finance Committee Report:

The purpose of this article is to appropriate funds to be reimbursed under the cited aid accounts.

Article 7. To see if the Town will vote to grant, appropriate, or otherwise provide the sum of \$1,000.00, or any other sum, for the purpose of providing engineering services for laying out a portion of Pratt's Mill Road for possible future widening and relocation. Pass any vote or take any action relative thereto.

Submitted by: Highway Commission

Article 8. To see if the Town will vote to grant, appropriate, or otherwise provide the sum of \$1,000.00, or any other sum, for the purpose of providing engineering services for laying out a portion of Peakham Road for possible future widening and relocation. Pass any vote or take any action relative thereto.

Submitted by: Highway Commission

Article 9. To see if the Town will vote to purchase certain parcels of land adjacent to the Railroad Bridge on Landham Road, and grant, appropriate or otherwise provide the sum of \$1,000.00, or any other sum, for this purpose. Pass any vote or take any action relative thereto.

Submitted by: The Highway Commission.

Move: That the Town purchase or take by eminent domain the parcels of land adjacent to the Railroad Bridge on Land-

ham Road and appropriate the sum of \$1,000.00 for this purpose.

Article 10. To hear the report of the Highway Commission relative to the relocation of a portion of the following named street, to wit: Portion of Raymond Road beginning at a point on the easterly side of Raymond Road and 537 feet, more or less, northerly from the southerly line of land of the Town of Sudbury; thence running northerly for a distance of 977 feet, more or less, as shown on a plan on file in the office of the Town Clerk entitled "Town of Sudbury, Massachusetts, plan of Relocation of Portion of Raymond Road for Acceptance; Scale 1 in. equal 40 ft., January 5, 1965," George D. White, Town Engineer, and to see if the Town will accept said relocation as and for a town way under the provisions of G. L. C. 82. Pass any vote or take any action relative thereto.

Submitted by the Highway Commission.

Move: Indefinite postponement

Article 11. To see if the Town will vote to appropriate the sum of \$14,000.00, \$10,500.00 to be transferred from the Road Machinery Fund, \$3,500.00 to be raised by the Town, for the purchase of a rebuilt Road Grader. The purchase of this Grader shall be in accordance with the specifications of the Highway Commission and shall be subject to public bid; the terms of the bid shall provide for the posting of a performance bond or certified check in the amount of \$400.00 to guarantee performance. Pass any vote or take any action relative thereto.

Submitted by: The Highway Commission.

Move: That the Town vote the sum of \$12,000.00 to be transferred from the Road Machinery Fund, for the purpose of a rebuilt road grader. The purchase of which shall be in accordance with the specifications of the Highway Commission and shall be subject to public bid; the terms of the bid shall provide for the posting of a performance bond or certificate check in the amount of \$400.00 to guarantee performance.

Article 12. To see if the Town will vote to appropriate and transfer the sum of \$3,250.00 or any other sum, from the Road Machinery Fund to purchase a four-wheel drive pickup truck with snow plow. The purchase of the truck under this article shall be in accordance with the specifications of the Highway Commission and shall be subject to public bid; the terms of the bid shall provide for the posting of a performance bond or a certified check in the amount of

\$100.00 to guarantee performance. Pass any vote or take any action relative thereto.

Submitted by: The Highway Commission.

Move: Indefinite postponement

Article 13. To see if the Town will vote and appropriate the sum of \$2,300.00 or any other sum, for the installation of Traffic Lights at the junction of Union Avenue, Concord Road and Old Lancaster Road, per the plan (Permit 650) and approved by the Massachusetts D. P. W., Traffic Division. The contract for this installation shall be subject to public bid in accordance with the specifications of the Highway Commission. Pass any vote or take any action relative thereto.

Submitted by: The Highway Commission.

Move: That the Town appropriate the sum of \$2,300 for the installation of Traffic Lights at the junction of Union Avenue, Concord Road and Old Lancaster Road, per the plan (Permit 650) as approved by the Massachusetts D. P. W., Traffic Division. The contract for this installation shall be subject to public bid in accordance with the specifications of the Highway Commission.

Article 14. To see if the Town will vote to give the Highway Commission sole jurisdiction over the use of the Highway Garage Town property and buildings thereon, located off of Old Lancaster Road, and to authorize the Highway Commission to enter into an agreement with the Sudbury Water District restricting the uses of this Town property so as to preserve the purity of the water supply obtained by the District from the adjoining well field. Pass any vote or take any action relative thereto.

Submitted by: Board of Commissioners, Sudbury Water District, Sudbury Highway Commission, Board of Selectmen.

Article 15. To hear the report of the Highway Commission relative to the layout of the following named street, to wit: West Street beginning at Pratt's Mill Road; thence running northerly a distance of approximately 527 feet as shown on a plan on file in the office of the Town Clerk entitled "Town of Sudbury, Massachusetts, Plan of West Street for Acceptance: Scale 1 in. equal 40 ft., January 5, 1965," George D. White, Town Engineer, and to see if the town will accept said street as and for a town way under the provisions of G. L. C. 82 on condition that the abutters convey their right, title and interest in said street to the town at no cost to the town and save the town harmless from any water damage to their property. Pass any vote or take any action thereon.

Submitted by: The Highway Commission.

Article 16. To see if the Town will vote to authorize the Board of Selectmen to apply to the Administrator of the Housing and Home Finance Agency for Federal Funds available under Public Law 560, 83rd Congress as amended, for the purpose of undertaking and having prepared survey, plans and reports including cost estimates, concerned with the installation of a town sewerage and town drainage system, said Town to authorize the Treasurer, with the approval of the Board of Selectmen, to receive and disburse those grants and loans made available under Public Law 560 as amended, for such purposes subject to all the conditions contained therein. Pass any vote or take any action relative thereto.

Submitted by: The Board of Health.

Finance Committee Report:

Article under study; recommendation will be made at the meeting.

Article 17. To see if the Town will grant or appropriate to the Conservation Fund, for the development of the natural resources of the Town, 1/20th of 1 per cent of the assessed valuation of the Town of the previous year, this fraction being \$12,153.00 as provided in Chapter 40, Section 8C of the General Laws, as amended. Pass any vote or take any action relative thereto.

Submitted by: The Conservation Commission.

Article 18. To see if the Town will authorize the Conservation Commission to expend the additional sum of \$5,600.00, or any other sum, from the Conservation Fund for the purpose of land acquisition previously authorized under Article 18 of the March 1964 Annual Town Meeting. Pass any vote or take any action relative thereto.

Submitted by: Conservation Commission.

Finance Committee Report:

Article still under study; will report and make recommendation at the meeting.

Article 19. To see if the Town will vote to authorize and direct the Board of Selectmen to take by eminent domain, for conservation and recreation purposes, from Francis and Virginia Umbrello, a certain parcel of land, or rights in such land, on the north side of Lincoln Road, being a portion or all of certain premises described in a deed recorded with South Middlesex District Registry of Deeds in Book 7520, Page 1, said premises having a total area of 47.4 acres, more or less,

and to raise and appropriate or transfer a sum of money therefor. Pass any vote or take any action relative thereto.

Submitted by Selectmen.

Article 20. To see if the Town will vote to authorize the Board of Selectmen to sell to the United States Government for the Sudbury National Wildlife Refuge Tract 400 within the Flood Plain Zone as shown on plans on file with the Town Clerk and Town Engineer, such sale to be on condition that the tracts sold be incorporated in the Sudbury National Wildlife Refuge. Pass any vote or take any action relative thereto.

Submitted by: Selectmen.

Article 21. To see if the Town will vote to grant or appropriate the sum of \$7,500.00 to build two (2) tennis courts at Featherland Park. Pass any vote or take any action relative thereto.

Submitted by: Park and Recreation Department.

Finance Committee Report:

Article still under consideration; recommendation will be made at the meeting.

Article 22. To see if the Town will vote to raise and appropriate the sum of \$6,000.00 or any other sum for the purpose of altering the Upper Town Hall to conform to the requirements as specified by the Commonwealth of Massachusetts, Department of Public Safety. Pass any vote or take any action relative thereto.

Submitted by: Board of Selectmen.

Move: Indefinite Postponement.

Article 23. To see if the Town will vote to grant or appropriate the sum of \$10,000.00 or any other sum, for the use of the Permanent Building Committee in planning additional school space. Pass any vote or take any action relative thereto.

Submitted by: School Needs Committee and Sudbury School Committee.

Move: Indefinite Postponement.

Article 24. To see if the Town will amend the By-Laws to prohibit hunting within the town boundaries. Pass any vote or take any action relative thereto.

Submitted by: Manuel Lapidis by petition.

Article 25. To see if the Town will vote to direct the Board of Selectmen to prepare a division of the Town into convenient voting precincts as provided by General Laws, Chapter 54, Section 6. Pass any vote or take any action relative thereto.

Submitted by: Lawrence B. Tighe, by petition.

Move: Indefinite Postponement.

Article 26. To see if the Town will vote to accept the provisions of General Laws, Chapter 39, Section 20, and, upon acceptance, establish voting precincts for the election for all Town Officers to be chosen thereat, and for voting for the election of Town Officers at special town meetings. Take any action or pass any vote relative thereto.

Submitted by: Lawrence B. Tighe, by petition.

Move: Indefinite Postponement.

Article 27. To see if the Town will vote to grant, appropriate or otherwise provide the sum of \$20,388.00, or any other sum, to purchase ten or more Automatic Voting Machines. Pass any vote or take any action relative thereto.

Submitted by: Town Clerk.

Move: Indefinite Postponement.

Article 28. To see if the Town will vote to amend Article IV, Section 1, of the Town By-laws, by striking out "by the Moderator" and to amend Article IV, Section 2, by striking out Section 2 and substituting therefor "Commencing in 1965, the appointments to fill the vacancies caused by expiration of terms shall be filled by three to be appointed by the Board of Selectmen and three by the Moderator; in 1966, one to be appointed by the Moderator and one by the Board of Selectmen; in 1967, one by the Board of Selectmen, one by the Moderator, and one by the School Committee, all appointments to be for periods of three years, and in subsequent years the above order of appointment shall be followed. The term of office of each appointee shall commence immediately upon qualification and shall expire at the close of final adjournment of the Annual Town Meeting at which their successors are appointed. Said committee shall choose its own officers and shall serve without pay. Said committee shall cause to be kept a true record of its proceedings," and to amend Section 3 by striking out "Moderator" in the ninth line and substituting therefor "the respective appointing authority." Pass any vote or take any action relative thereto.

Submitted by: Selectmen.

Move: Indefinite Postponement.

Article 29. To see if the Town will vote to amend Article IV, Section 5, of the Town By-laws to add to the last paragraph "including the amounts requested by those originating the above estimates. The Selectmen shall cause the Finance Committee's budget submittal including requested amounts, recommendations and the Finance Committee's report of reasons for differences to be printed in the warrant for the Annual Town Meeting." Pass any vote or take any action relative thereto.

Submitted by: Selectmen.

Move: Indefinite Postponement.

Article 30. To see if the Town will vote to accept the provisions of Chapter 540 of the Acts of the Year 1948, Section 97A passed by the General Court of Massachusetts, amending Chapter 41, Section 97, relative to the establishment of Police Departments in certain towns, or otherwise act thereon. Pass any vote or take any action relative thereto.

Submitted by: John McGovern, by petition.

Article 31. To see if the Town will vote to rescind the action taken under Article 42 of the 1964 Annual Town Meeting, and establish the Office of Tree Warden as an elected position for the term of three years, commencing with the Annual Town Election in 1966. Pass any vote or take any action relative thereto.

Submitted by: Tree Warden.

Move: Indefinite Postponement.

Article 32. To see if the Town will vote to transfer the power and duty relevant to Insect and Pest Control to the Highway Commission pursuant to Chapter 577 of the General Court of 1963; this transfer to take place on the date of the Annual Town Meeting of 1966. Pass any vote or take any action relative thereto.

Submitted by: The Highway Commission.

Finance Committee Report:

The Finance Committee favors the inclusion of the Insect and Pest Control function along with the Highway Commission related area of Trees.

Article 33. To see if the Town will approve the appointment of a continuing Mosquito Control Committee to work cooperatively with the Eastern Middlesex Mosquito Control Project, said committee to consist of delegated representa-

tives from the following groups; Board of Selectmen, Conservation Commission, Rod and Gun Club, Highway Commission, Board of Health, and two citizens-at-large appointed by the Moderator.

Submitted by: The Board of Health.

Move: Indefinite postponement

Article 34. To see if the Town will vote to continue the Municipal Light Department Study Committee, created under Article 11 of the Adjourned Annual Town Meeting of March 12, 1964, for one year. Pass any vote or take action relative thereto.

Submitted by the Selectmen.

Article 35. To see if the Town will vote to establish a permanent Landscape Committee consisting of the Tree Warden and designated members to serve terms of three (3) years each. Membership to consist of one person designated by the Sudbury School Committee, one person designated by the Sudbury Conservation Commission, one person designated by the Sudbury Planning Board, and one person designated by the Sudbury Board of Selectmen. The duties of said committee shall be:

- 1) To recommend ways for preserving and safeguarding public shade trees within the Town.
- 2) To recommend suitable planting schemes on Town owned property including areas around buildings.

The committee shall report to the Selectmen from time to time and shall report annually to the Town Meeting. Pass any vote or take any action relative thereto.

Submitted by: Landham Road Citizens' Committee. (By petition).

Article 36. To see if the Town will vote to appropriate the sum of \$72,460.00 from the Stabilization Fund as established by Article 6 of the Special Town Meeting of October 21, 1964, and authorize the Town Treasurer to pay said funds to the Lincoln-Sudbury Regional School District for the purpose of constructing, furnishing and equipping the new addition to the Lincoln-Sudbury Regional High School. Pass any vote or take any action relative thereto.

Submitted by Selectmen.

Finance Committee Report: To me made at the meeting.

Article 37. To see if the Town will vote to abandon and discontinue so much of Willis Road beginning from a point

6,850 feet from Maynard Road to Mossman Road, a portion of which is shown on a map drawn by William B. Wood and dated October 1830, in accordance with a resolution of the General Court; and that portion of Victoria Road extending in a southerly direction to Guzzle Brook, so called, also appearing on the aforementioned map in accordance with the authority contained in Chapter 40, Section 15, and Chapter 82, Section 21, of the General Laws. Pass any vote or take any action relative thereto.

Submitted by: Selectmen.

Article 38. To authorize the Board of Selectmen to enter into negotiations with the Massachusetts State Board of Regional Community Colleges to determine mutually advantageous terms and conditions for making available the Noyes School (if released by the School Committee) and the old Junior High School building as a temporary Community College site and also the town-owned Raymond Land or any other land as a permanent campus site and to report to the Annual Town Meeting any proposed agreements and obtain the specific vote of a subsequent Town Meeting before any contract for lease, rental or sale is entered into and to provide \$500.00 for the costs of study to achieve the intent of this article. Pass any vote or take any action relative thereto.

Submitted by: Selectmen.

Finance Committee Report:

Article under discussion; recommendation will be made at the meeting.

Article 39. To see if the Town will vote to amend the By-Laws, Article IX, Section 2 to read: In the event that a non-conforming building or structure existing at the time of passage of the Zoning By-Law, or of any amendment thereof applicable to said building or structure is destroyed or damaged, it may be reconstructed and used as before said destruction or damage, provided that the reconstruction is commenced within two (2) years from the date of destruction or damage and the building or structure completed and the use resumed within one (1) year thereafter. Nothing in this By-Law shall be construed to permit the reconstruction or resumption of use of a building or structure destroyed or damaged except substantially as it existed prior to said destruction or damage, and in compliance with any existing laws.

In the event that a non-conforming use of premises is abandoned for a period of three years such non-conforming use shall be considered to have been extinguished and the

premises be subject to the regulations of the District in which said premises are located.

Submitted by: The Planning Board.

Article 40. To see if the Town will vote to amend Article IX of the By-Laws of the Town (Zoning By-Laws), Business Districts, by striking out Business District No. 12 and adding to Residential Zone "A-1" a certain parcel of land in the westerly part of Sudbury situated on the northerly side of Hudson Road and bounded and described as follows: "Beginning at the southwest corner of the premises at the Hudson Road and land now of the U. S. Government, thence running easterly along the north line of Hudson Road 75 feet, more or less, to land now of Vera, thence turning and running northerly 110 feet, more or less, to a corner, thence turning and running easterly 115 feet, more or less, to a corner, thence turning and running southerly 100 feet, more or less, to Hudson Road, the last three courses by land of Vera and being the westerly boundary of Lot No. 21, the northerly boundary of Lots 21, 20, 19, 18, and 17, and the easterly boundary of Lot No. 17, all of Block "W," as shown on Plan of Pine Lakes, Sudbury, Mass., dated April 1927, by Robert B. Bellamy, surveyor, and recorded in the South Middlesex District Registry of Deeds, Cambridge, Massachusetts.

Thence turning and running easterly along Hudson Road 50 feet, more or less, to land now of Boscom, thence turning and running northerly 100 feet, more or less, to a corner, thence turning and running easterly 50 feet, more or less, to land of Lehr. The last two (2) courses by land of Boscom and being the westerly boundary of Lots No. 14 and 13, Block "W," as shown on the above mentioned plan.

Thence turning and running northerly in a straight line 425 feet, more or less, by land of Lehr to a corner at Lot No. 4, Block "V," the last mentioned course being the westerly boundary of Lot No. 37, Block "W", the width of Maplewood Avenue, the westerly boundary of Lot No. 20, Block "V", and the westerly boundary of that part of Lots 7, 6, 5, Block "V", that is cut by said straight line.

Thence turning and running westerly 75 feet, more or less, by Lot No. 4, Block "V", on the above mentioned plan to land now of the U. S. Government, thence turning and running southwesterly 500 feet, more or less, to corner, thence turning and running easterly 65 feet, more or less, to a corner, thence turning and running southwesterly 115 feet, more or less, to Hudson Road and point of beginning; the last three courses being by the land of the U. S. Government, or to take any other action pertaining thereto.

Submitted by: The Planning Board.

Article 41. To see if the Town will vote to amend Article IX, of the By-Laws of the Town, (Zoning By-Laws), Business Districts, by striking out Business District No. 14, a certain area of land situated in the westerly part of Sudbury on the northerly side of Hudson Road, bounded and described as follows: "Commencing at a point on the northerly side of Hudson Road, 200 feet east of the easterly line of Marlboro Road, thence westerly by said Hudson Road, 400 feet, thence northerly by a line perpendicular to said Hudson Road, 200 feet, thence easterly by a line parallel to and 200 feet distant from said Hudson Road, 400 feet, thence southerly to the point of beginning; and adding said District to Residential Zone "A-1", or to take any other action pertaining thereto.

Submitted by: The Planning Board.

Article 42. To see if the Town will vote to amend Article IX of the By-Laws of the Town (Zoning By-Laws), Business Districts, by striking out Business District No. 9, bounded by a line starting at a point at the junction of Hudson Road and August Road, thence northerly 100 feet along the latter, thence in a westerly direction parallel to Hudson Road to a point 150 feet west of Run Brook, thence southerly to Hudson Road, thence easterly along Hudson Road to a point of beginning; and adding said District to Residential Zone "A-1", or to take any other action pertaining thereto.

Submitted by: The Planning Board.

Article 43. To see if the Town will vote to amend Article IX of the By-Laws of the Town (Zoning By-Laws), Business Districts, by striking out Business District No. 8, bounded by a line starting at a point at Edmund Stone's west property bound on Hudson Road, thence southerly along property line 100 feet; thence westerly parallel to Hudson Road, to L. D. Stiles' west property boundary, thence northerly along same to Hudson Road, thence easterly along Hudson Road to point of beginning; and adding said District to Residential Zone "B-1," or to take any other action pertaining thereto.

Submitted by: The Planning Board.

Article 44. To see if the Town will vote to amend Article IX of the By-Laws of the Town (Zoning By-Laws), Business Districts, by striking out Business District No. 7, bounded by a line starting at a point at the junction of Hudson Road and the New York, New Haven & Hartford track, extending northerly along said track to a point 150 feet beyond present coal sheds, thence westerly to railroad property line, thence southerly along said property line to Hudson Road, thence easterly to point of beginning; and adding said District to

Residential Zone "B-2." Pass any vote or take any action relative thereto.

Submitted by: The Planning Board.

Article 45. To see if the Town will vote to amend Article IX of the By-Laws of the Town Zoning By-Laws) by striking out that portion of Business District No. 3 which lies between Concord Road and east property line of Davidson and creating a new Limited Business District to be known as Limited Business District No. 3 and to be described as follows:

Limited Business District No. 3. Beginning at the east side of the intersection of Concord Road and the Post Road, thence running northerly along Concord Road to the North property line of McMurtry, thence easterly along property line of McMurtry and continuing along with property line of Davidson to east property line of Davidson, thence southerly along property line of Davidson, to Post Road, thence westerly along Post Road to point of beginning. Pass any vote or take any action relative thereto.

Submitted by: Harold E. McMurtry, by petition.

Article 46. To see if the Town will vote to authorize and direct the Board of Selectmen, with the assistance and advice of such other State Officers, Boards, and Committees as they may require, to petition any concerned State Authority by any means at their disposal for the earliest possible construction of the Route 20 by-pass through the Town by the Massachusetts Department of Public Works, and to report at the next Annual Town Meeting. Pass any vote or take any action relative thereto.

Submitted by: The Planning Board.

Article 47. To see if the Town will vote to amend Article IX of the By-Laws (Zoning By-Laws), Section 1, by establishing a new Limited Industrial District to be known as Limited Industrial District Number 3, and directing that the boundaries of the same be incorporated into the existing zoning map of the Town, under the direction of the Board of Selectmen, as follows:

Beginning at a point on the northerly side of Codger Lane and the westerly land of the New York, New Haven and Hartford Railroad Company; thence northerly by the westerly line of the New York, New Haven and Hartford Railroad Company to Hop Brook (so-called); thence in a northwesterly direction by the center line of said Hop Brook to its intersection with Dudley Brook (so-called); thence in a southwesterly and westerly direction by the center line of said

Dudley Brook to the westerly property line of land of Frank J. and Thomas J. Vassalotti, Trustees Melgrove Realty Trust; thence in a southerly direction by said property line crossing other land of Frank J. and Thomas J. Vassalotti, Trustees Melgrove Realty Trust, to the northerly side of Codger Lane; thence easterly by the northerly side of Codger Lane to the point of beginning.

The following special provisions shall apply to Industrial District Number 3: (a) There shall be no filling, excavating, or alteration of the Hop Brook, the (so-called) Dudley Brook or the land adjacent thereto, in connection with any industrial or other development. Pass any vote or take any action relative thereto.

Submitted by: Industrial Development Commission.

Article 48. To see if the Town will vote to amend Article IX of the By-Laws (Zoning By-Laws), Section 1, by striking out Industrial District Number 9 and that portion of Industrial District Number 2 which lies westerly of the New York, New Haven, and Hartford Railroad Company, and creating Limited Industrial District Number 4, and directing that the boundaries of the same be incorporated into the existing zoning map of the Town, under the direction of the Board of Selectmen, as follows:

Beginning at a point on the southerly side of Codger Lane and the westerly property line of land of the New York, New Haven and Hartford Railroad Company; thence westerly by said Codger Lane to the westerly property line of Louis Cabot and Nicholas N. Marino; thence southerly by said land of Cabot and Marino to land of the Boston and Maine Railroad Company; thence easterly by said Boston and Maine Railroad Company to land of the New York, New Haven and Hartford Railroad Company; thence northerly by said New York, New Haven and Hartford Railroad Company to the point of beginning. Pass any vote or take any action relative thereto.

Submitted by: Industrial Development Commission.

Article 49. To see if the Town will vote to amend Article IX of the By-Laws (Zoning By-Laws), Section 1, by establishing a new Limited Industrial District to be known as Limited Industrial District Number 5, and directing that the boundaries of the same be incorporated into the existing zoning map of the Town, under the direction of the Board of Selectmen, as follows:

Beginning at a point on the Boston & Maine Railroad right-of-way at the intersection of the present westerly bound of Limited Industrial District Number 1; thence westerly along

the property of the Boston & Maine Railroad to a point 200 feet east of the easterly bound of Horse Pond Road; thence southerly and parallel to said Horse Pond Road right-of-way and 200 feet to the east, for a distance of 900 feet; thence easterly to Limited Industrial District Number 1; thence northerly along Limited Industrial District Number 1 for a distance of 900 feet to point of beginning. Pass any vote or take any action relative thereto.

Submitted by: Industrial Development Commission.

And you are required to serve this warrant by posting attested, printed copies thereof at the Town House, each public meeting house, railroad station and post office in said Town seven days at least before the time appointed for said election.

Hereof fail not and make due return of this warrant by your doing thereon to the Town Clerk, at or before the time of meeting aforesaid.

Given under our hands this nineteenth day of February, one thousand nine hundred and sixty-five.

EDWARD E. KREITSEK

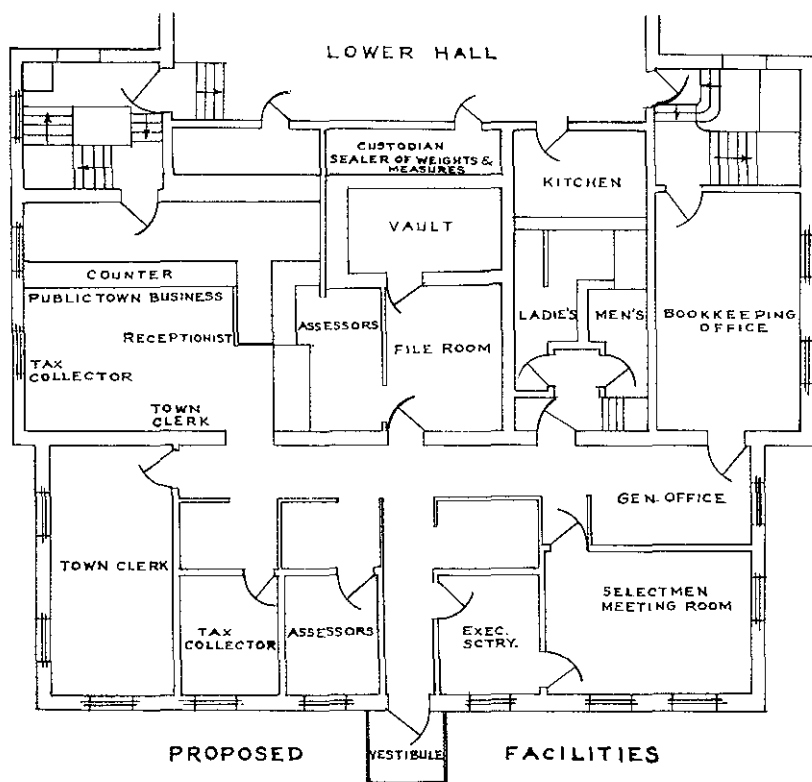
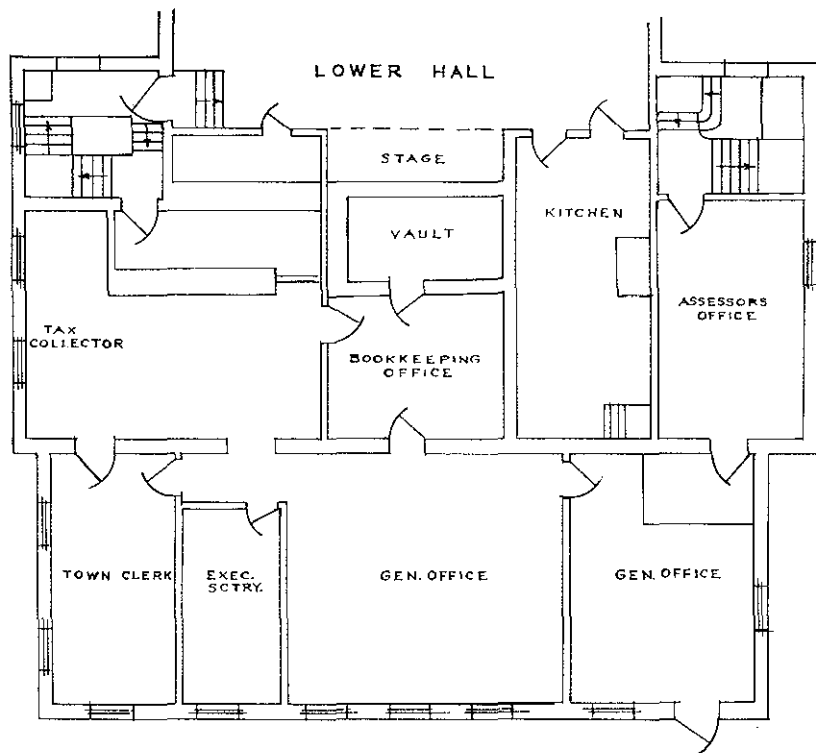
RICHARD C. VENNE

JOHN E. TAFT

Selectmen of Sudbury

Proposed Consent Calendar

Articles: 1, 4, 5, 6, 12, 14, 31, 33, 34, and 36.



Educational Material

U. S. POSTAGE

PAID

PERMIT NO. 4

SUDBURY, MASS.