

FOR CONTINUATION OF PIPING, REFER TO DWG. M-2.

NOTE:
COORDINATE DIFFUSERS AND REGISTER LOCATIONS WITH ARCHITECTURAL REFLECTED CEILING PLAN DESIGNED BY RIZZA ASSOCIATES. OBTAIN REFLECTED CEILING PLAN FROM OWNER.

10X10 DOOR GRILLES (TYPICAL FOR (3) OFFICE DOORS FURNISHED AND INSTALLED BY HVAC CONTRACTOR.

FOR CONTINUATION OF DUCTWORK, REFER TO DWG. M-2.

FOR CONTINUATION OF PIPING, REFER TO DWG. M-2.

NORTHEAST
CONSULTING ENGINEERS
101 EAST GROVE ST. MIDDLEBORO, MA
TEL. (508) 947-3514 FAX (508) 947-4814

Sudbury School Dept.
Relocation to the Fairbank Facility
Sudbury, MA
HVAC PARTIAL FLOOR PLAN

M-1
6-8-90

FAN COIL UNIT SCHEDULE

BASED ON DUNHAM BUSH, VOLTAGE 208/3160

MARK	MODEL	CFM	TSP	O.A. CFM	H.P.	FAN FILTER	HEATING COIL (STD)	COOLING COIL	TOTAL ROWS	DE WBS	DE WBS AVG	REAR COMP. VOLIC WAVE	HCAP				
MARK	MODEL	CFM	TSP	O.A. CFM	H.P.	FAN FILTER	HEATING COIL (STD)	COOLING COIL	TOTAL ROWS	DE WBS	DE WBS AVG	REAR COMP. VOLIC WAVE	HCAP				
FC-1	DUNHAM BUSH CC-2000	1995	1.0	700	3/4	T.A.	105	140	44	43	51.2	67.3	6	83.5	55.0	67.8	54.2

UNIT NO.	CFM @ 600	MBH	H.P.	ELECTRICAL	TTE	EWT	CFM		
CUH-1	175	200	0.35	120	1	CABINET	180°	2.0	CABINET TYPE

FINNED TUBE RADIATION SCHEDULE

BASED ON DUNHAM BUSH

MARK	CAPACITY BTU/FT	AVG WATER TEMP	PIPE SIZE	PIPE SIZE	FIN SIZE	ENCLOSURE LENGTH OF	FIN/FT	HEIGHT	ELEMENT	REMARKS
FT-4	1350	170	"	2 3/4" x 4"	4.8	TYPE S 420	4.8	9'-0"	SUPPLY & RETURN IN COVER / SEE DETAILS	
FT-5								5'-0"		
FT-6								6'-0"		
FT-7								7'-0"		
FT-8								8'-0"		
FT-9								9'-0"		

PUMP SCHEDULE

BASED ON TRCO

PUMP NO.	MODEL	SIZE	TYPE	CFM	SERVICE	HEAD IN FEET	H.P.	CURRENT	RPM	REMARKS
P-1	1614	40.0	LINE	40.0	HEAT EXCHANGER	30	3/4	208	3	1750
P-2	1614	40.0	LINE	40.0	"	30	3/4	208	3	1750 (STAND BY)

AIR COOLED CONDENSING UNIT SCHEDULE

BASED ON TRICK

UNIT NO.	WATER	ARE	NON CAP BUT COND	COND TUS	COND TUS	COND TUS	COND TUS	COND TUS	COND TUS	COND TUS		
CU-1	HEAD	167	7/2	9/5	87	300	40°	3/4	208	3	183	30.1

HEAT EXCHANGER SCHEDULE

BASED ON PATTERSON-KELLEY. NOTE - TACO AND BELL + GOSSET ARE EQUAL.

UNIT NO.	CFM	MAX PD	TEMP	PH	MBS	TOTAL	WELL NO.	REMARKS
HE-1	94	5.9	160°	1.0	940	2	D56-73	MTD, ON FABRICATED PIPE STAND

101 EAST GROVE ST MIDDLEBORO, MA
TEL (909) 947-8314 FAX (909) 947-4644

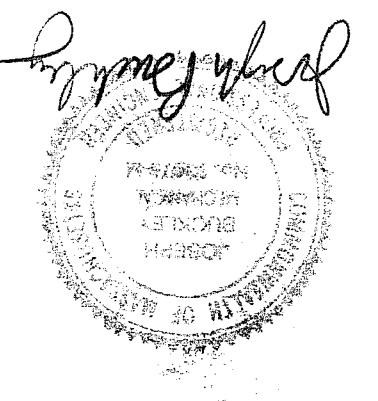
NORTHEAST CONSULTING ENGINEERS

Sudbury School Dept. Relocation to the Fairbank Facility Sudbury, MA

6-8-90

M-3

LEGEND AND SCHEDULES

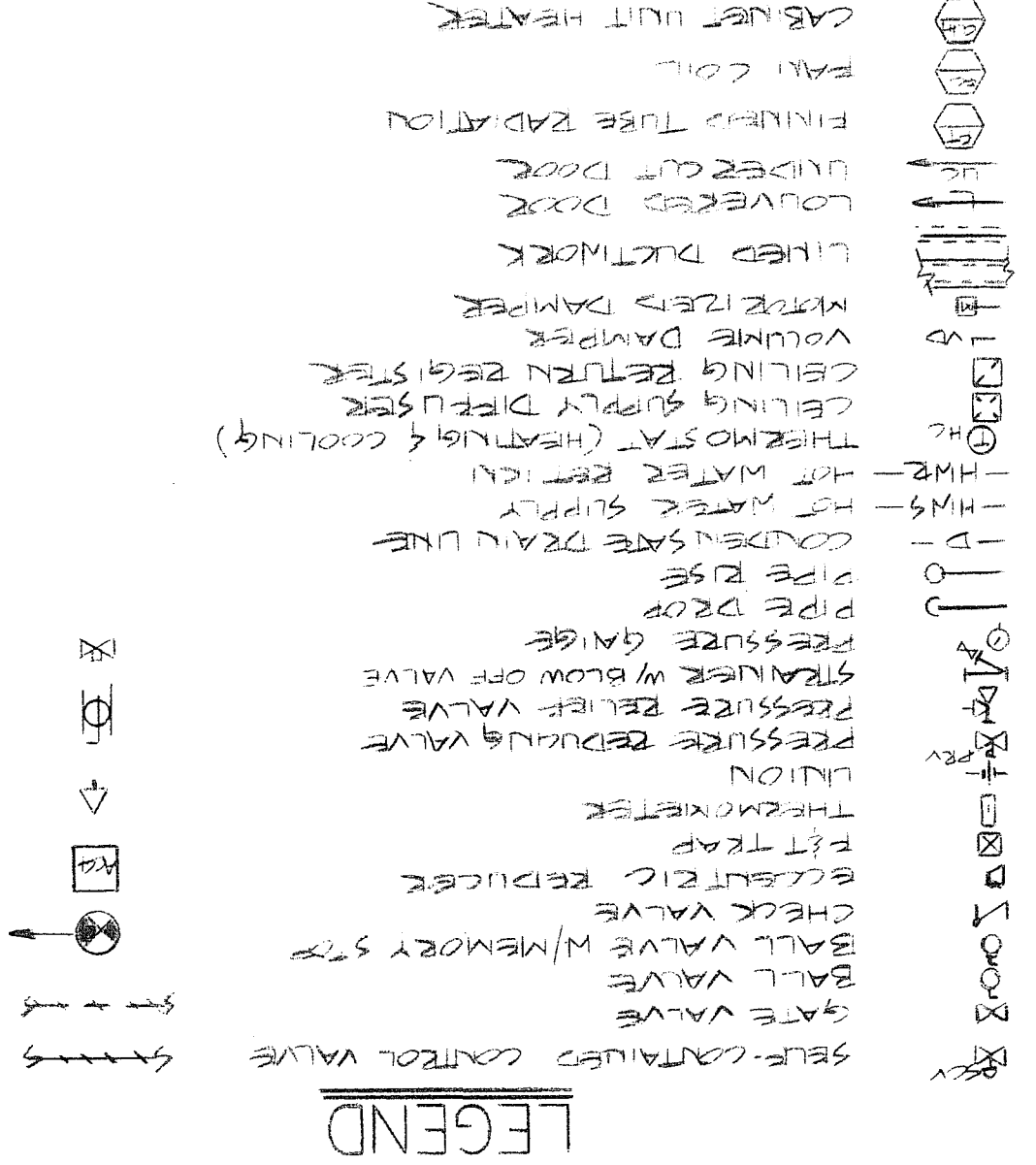


NOTE:

- BEACING SUPPORTS FOR PANEL MTD. "THRU THE WALL" AIR CONDITIONERS SHALL BE BY THE HVAC CONTRACTOR TO SUIT FIELD CONDITIONS
- REFER TO DRAWING NO M-1 FOR LOCATIONS OF EACH UNIT
- THRU THE WALL AIR CONDITIONING UNITS SHALL BE INSTALLED IN INSULATED PANELS LOCATED ABOVE OPERABLE SASHES AND/OR IN INSULATED PANELS IN FORMER EXTERIOR DOOR LOCATION. (COORDINATE WITH THE OWNER)

NOTE:

- HEAT EXCHANGER SIZED FOR FUTURE EXPANSION.
- ACTUAL GALLOUNAGE - 40
- STEAM PRESSURE 2 PSIG IN SHELL

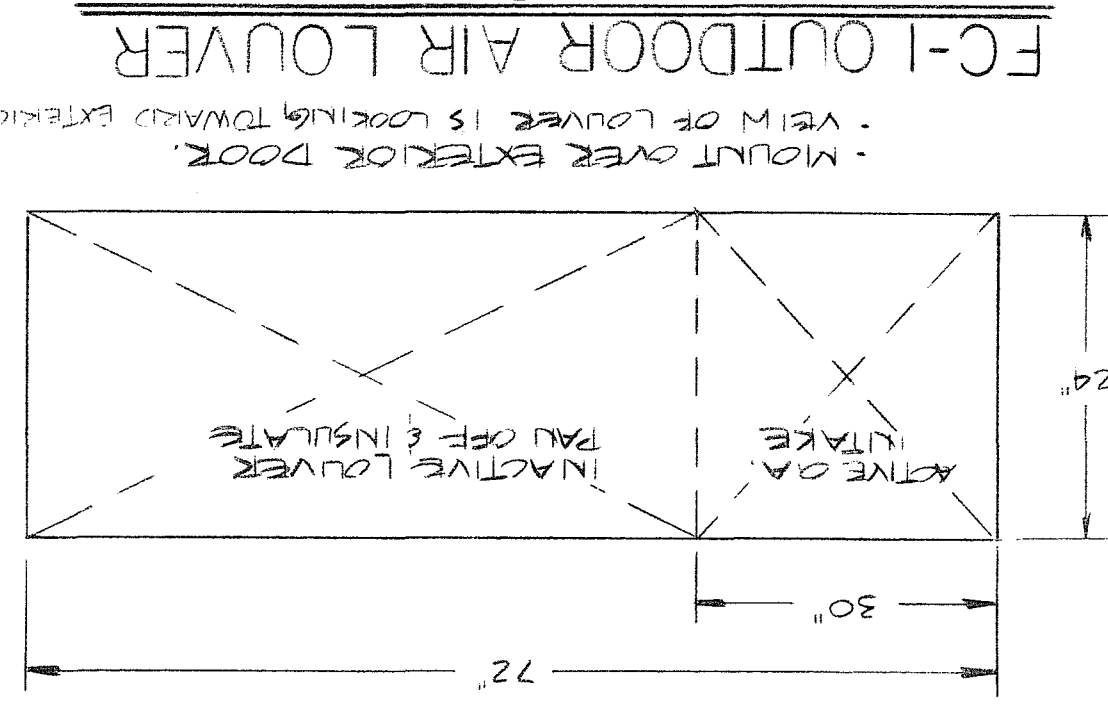
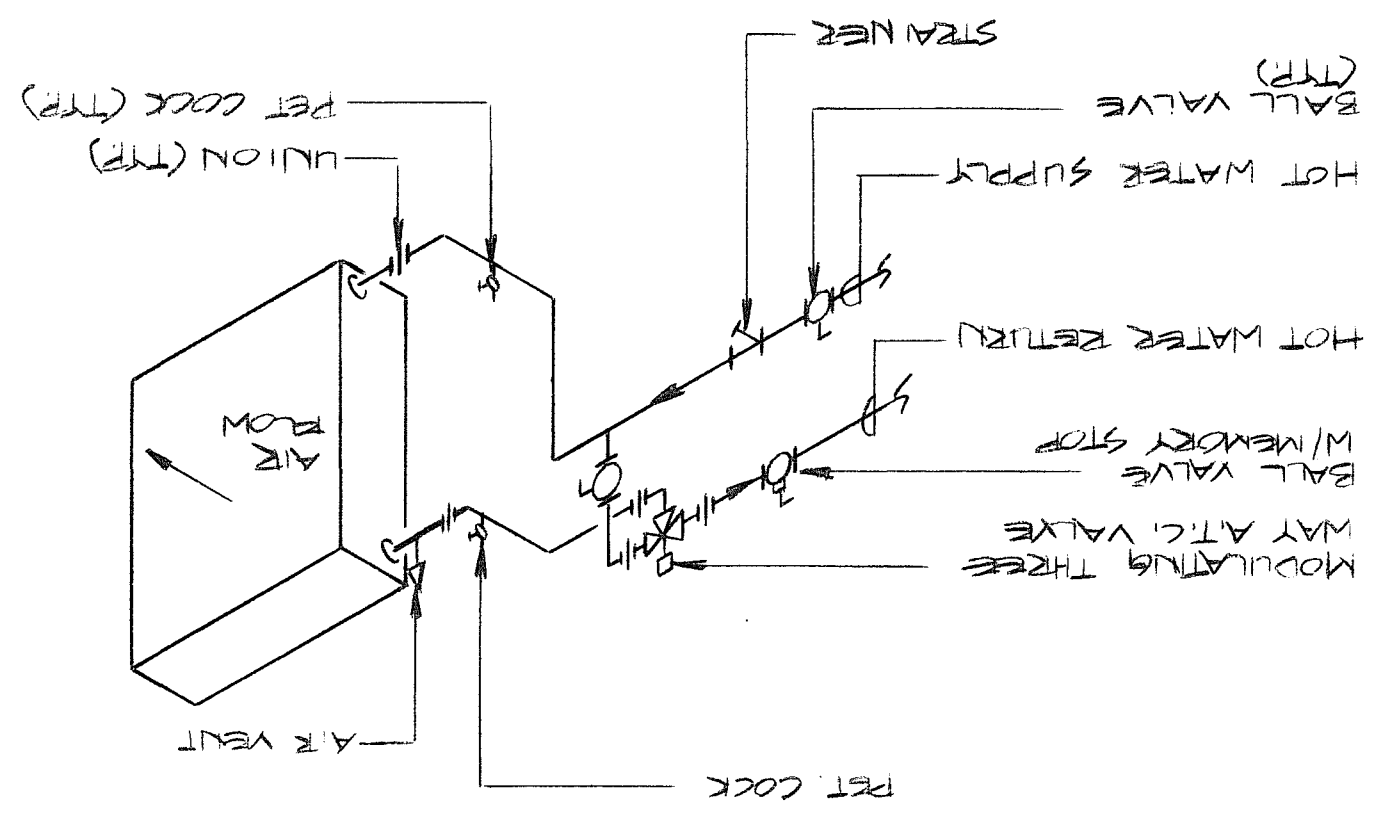


EXHAUST FAN SCHEDULE

UNIT NO.	CFM	S.P.	H.P.	MODEL	REMARKS
EE-1	700	0.8	1/4	FUN 135E	MODIFY EXISTING CURB TO SUIT FAN

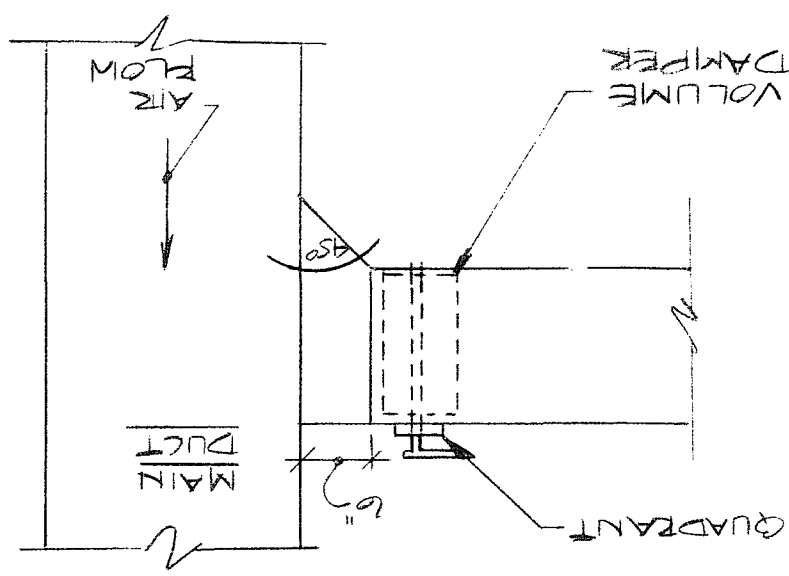
BASED ON ACME

TYPICAL PIPING TO HOT WATER COIL



· MOUNT OVER EXTERIOR DOOR.
· VIEW OF LOUVER IS LOOKING TOWARD EXTERIOR FROM CORRIDOR.

BRANCH DUCT CONNECTION DETAIL

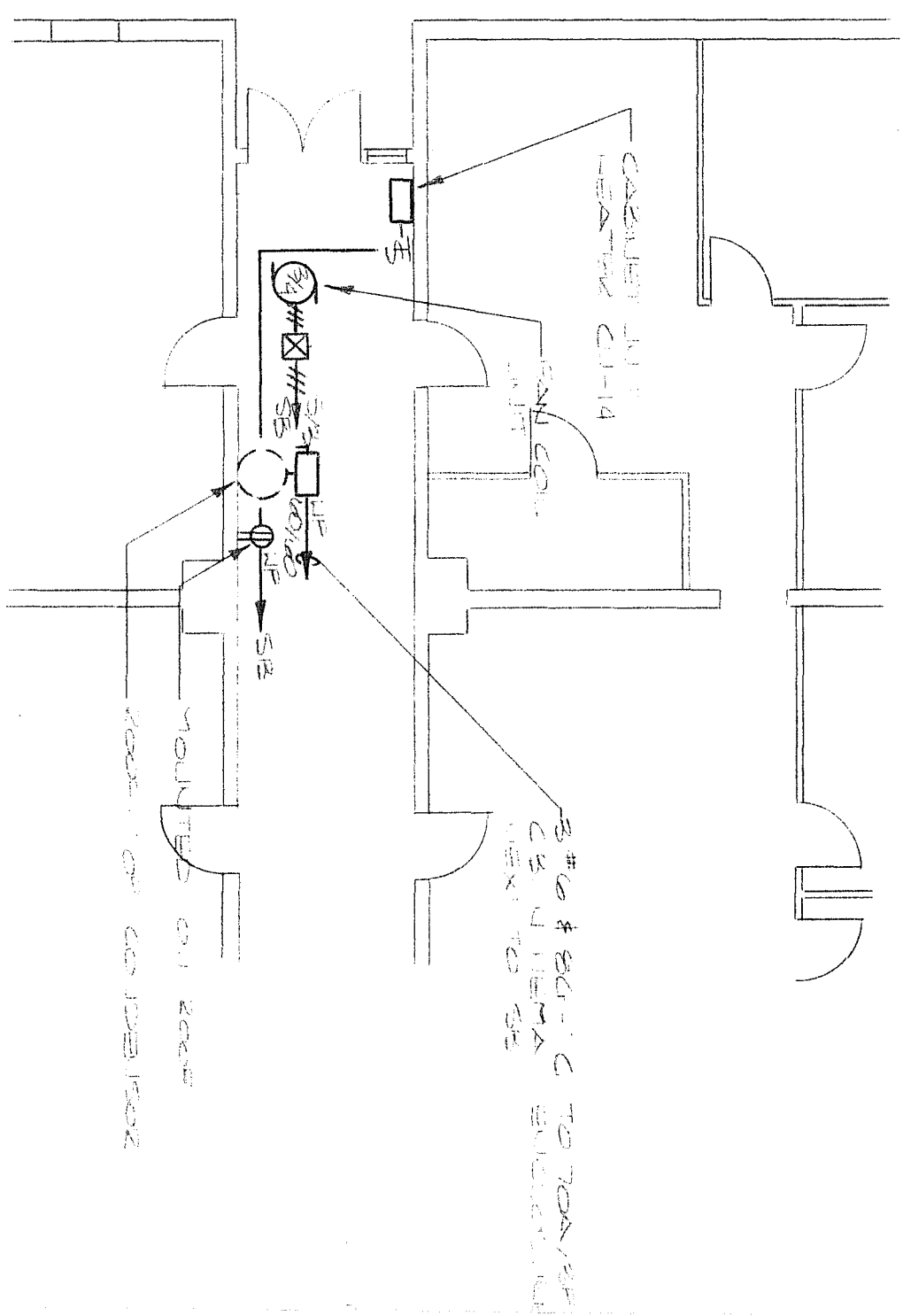


John Rowley

M-4

Sudbury School Dept.
Relocation to the Fairbank Facility
Sudbury, MA

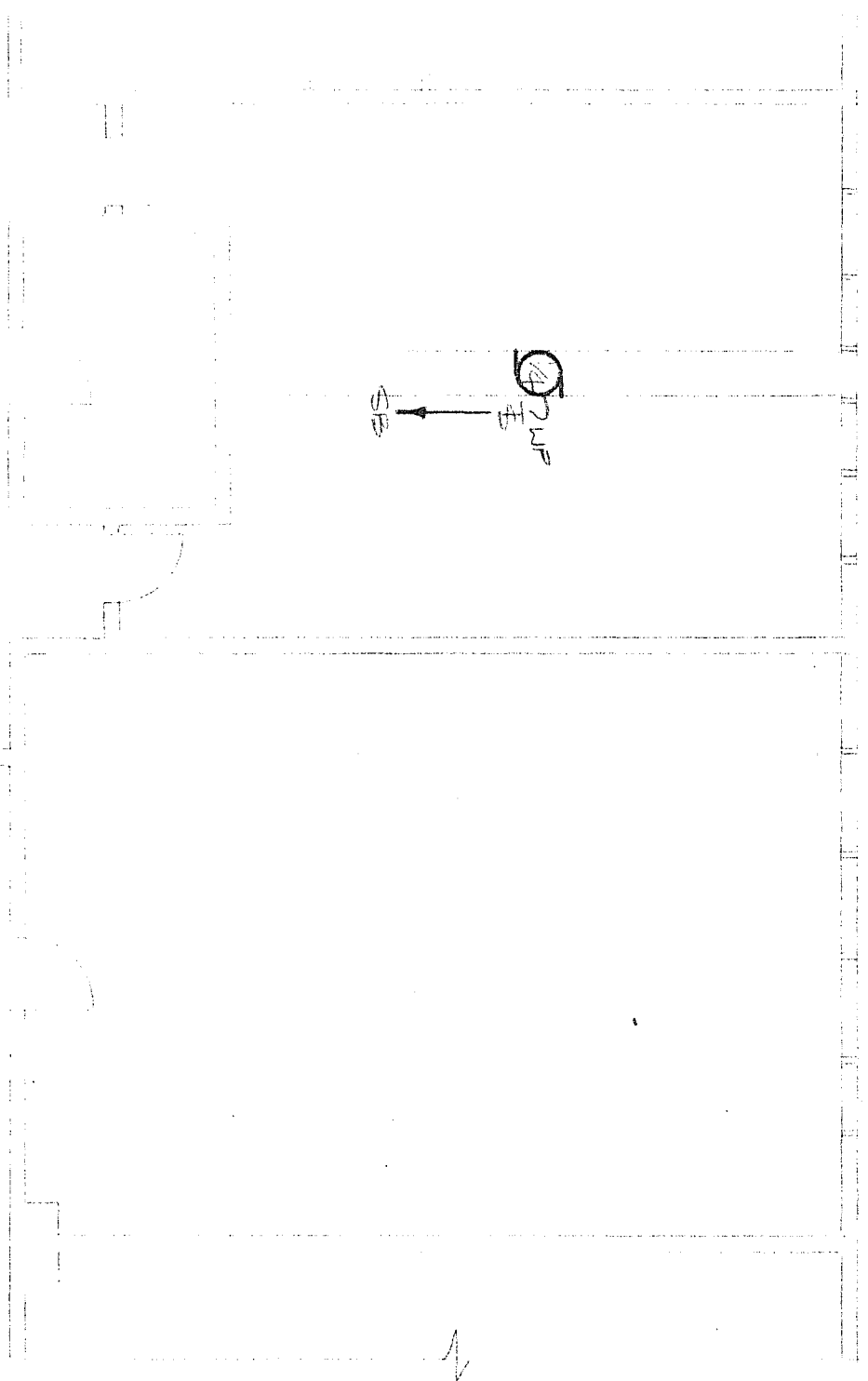
NORTHEAST
CONSULTING ENGINEERS



PART PLAN CLASSROOM AREA
SCALE: 1/8" = 1'-0"

LEGEND

- # RECEPTACLE AND LIGHTING ON TIGER INDICATES EXISTING OR NEW AND CONTAINERS CONTAINED IN RECEPTACLE (2) AND LIGHTING CONTAINERS SHALL NOT BE INDICATED BY THESE SYMBOLS UNLESS THEY ARE INDICATED BY CIRCLES LARGER THAN THE 1/2" DIA. SYMBOLS CALLED OUT ON DRAWING GENERAL SYMBOLS CONTAINER & LIGHT SHALL BE INDICATED BY CIRCLES LARGER THAN 1/2" DIA.
- LP MOUNTING TO BE IN ROOM UP - THIS IS A CIRCUIT BREAKER NUMBER PROVIDED IN THE DRAWING BUT CIRCUIT BREAKERS ARE EXISTING UNLESS NOTED
- LP MOTOR CONTAINER - DISCONNECT
- DISCONNECT SWITCH - UP INDICATES VEMA SW. DISCONNECTS - 60/100 INDICATES VEMA SW. SWITCH BY ADAPTER THE DELAY FUSES
- CONNECTION MOTOR STARTER AND INTERLOCK DISCONNECT SWITCH
- CONNECTION MOTOR STARTER AND FUSED DISCONNECT SWITCH - IN INDICATES VEMA SW. THE DELAY FUSES.
- ⊕ THERMAL MOTOR SWITCH UP INDICATES VEMA SW. ENCLOSURE
- ⊕ 250V 2-PHASE RECEPTACLE MOUNTED IN A HEAT EXCHANGER ENCLOSURE

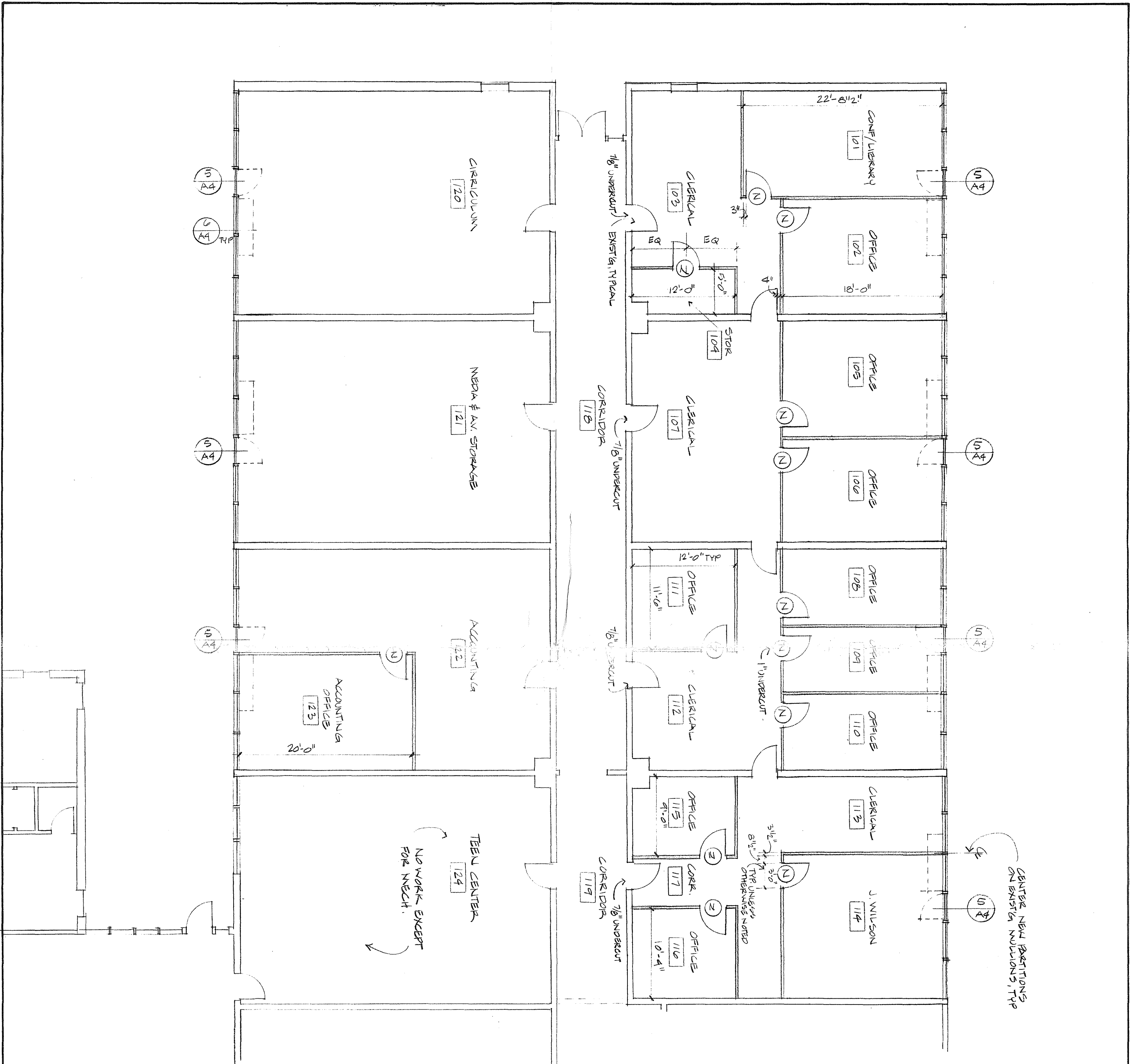


PART PLAN BOILER ROOM AREA
SCALE: 1/8" = 1'-0"

- NOTES
- PROVIDE MOUNTING BRACKETS RETIRED IN VERT. SUPPORTS OF HEAT EXCHANGER FOR MOUNTING OF SUPPORTS
 - CONDUCT REPAIRS TO FORM STARTER WIRE EACH STARTER AT ONCE

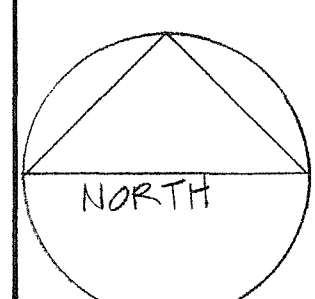
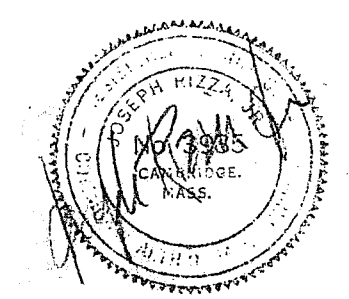
Thomas Y. Tomasi
Professional Engineer
No. 10000
State of Massachusetts

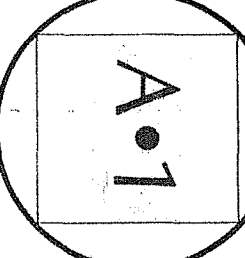
	<h2>Sudbury School Dept.</h2> <p>Relocation to the Fairbank Facility Sudbury, MA</p>	
	<p>ELECTRICAL - PART PLANS & LEGEND</p>	<p>101 EAST GROVE ST MIDDLEBORO, MA TEL. (508) 947-3514 FAX (508) 947-4844</p>



1. REMOVE ALL EXISTING CASEWORK, SHELVING, CHALKBOARD TRACK BOARDS, PARTITIONS, ETC. IN ROOMS 101-123.
 2. REMOVE EXISTING FAN COIL UNITS AND PIPING & PATCH TO MATCH AS REQ'D.
 3. REMOVE EXISTING RUBBER BASE IN AREAS TO RECEIVE CARPET.
 4. INDICATES NEW PARTITIONS SUPPLIED BY PRE-FAB PARTITION INSTALLER.

- NOTES:**
1. REMOVE ALL EXISTING CASEWORK, SHELVING, CHALKBOARD TRACK BOARDS, PARTITIONS, ETC. IN ROOMS 101-123.
 2. REMOVE EXISTING FAN COIL UNITS AND PIPING & PATCH TO MATCH AS REQ'D.
 3. REMOVE EXISTING RUBBER BASE IN AREAS TO RECEIVE CARPET.
 4. INDICATES NEW PARTITIONS SUPPLIED BY PRE-FAB PARTITION INSTALLER.
- INDICATES PRE-FAB PARTITIONS HEAD TRACK TO BE MOUNTED TO CEILING GRID. INSTALL 6" THICK FIBERGLASS INSULATION MIN. 2" EITHER SIDE OF PARTITIONS FOR OFFICE 102 & 114.



	<h1>Sudbury School Dept.</h1> <p>Relocation to the Fairbank Facility Sudbury, MA</p>	<h1>r i z z a</h1> <p>associates</p>
	<p>Date: 5/29/90 Title: FLOOR PLAN</p>	<p>architects: 7 court street, arlington, ma 02174 tel: 617-641-2340 fax 617-641-2344</p>

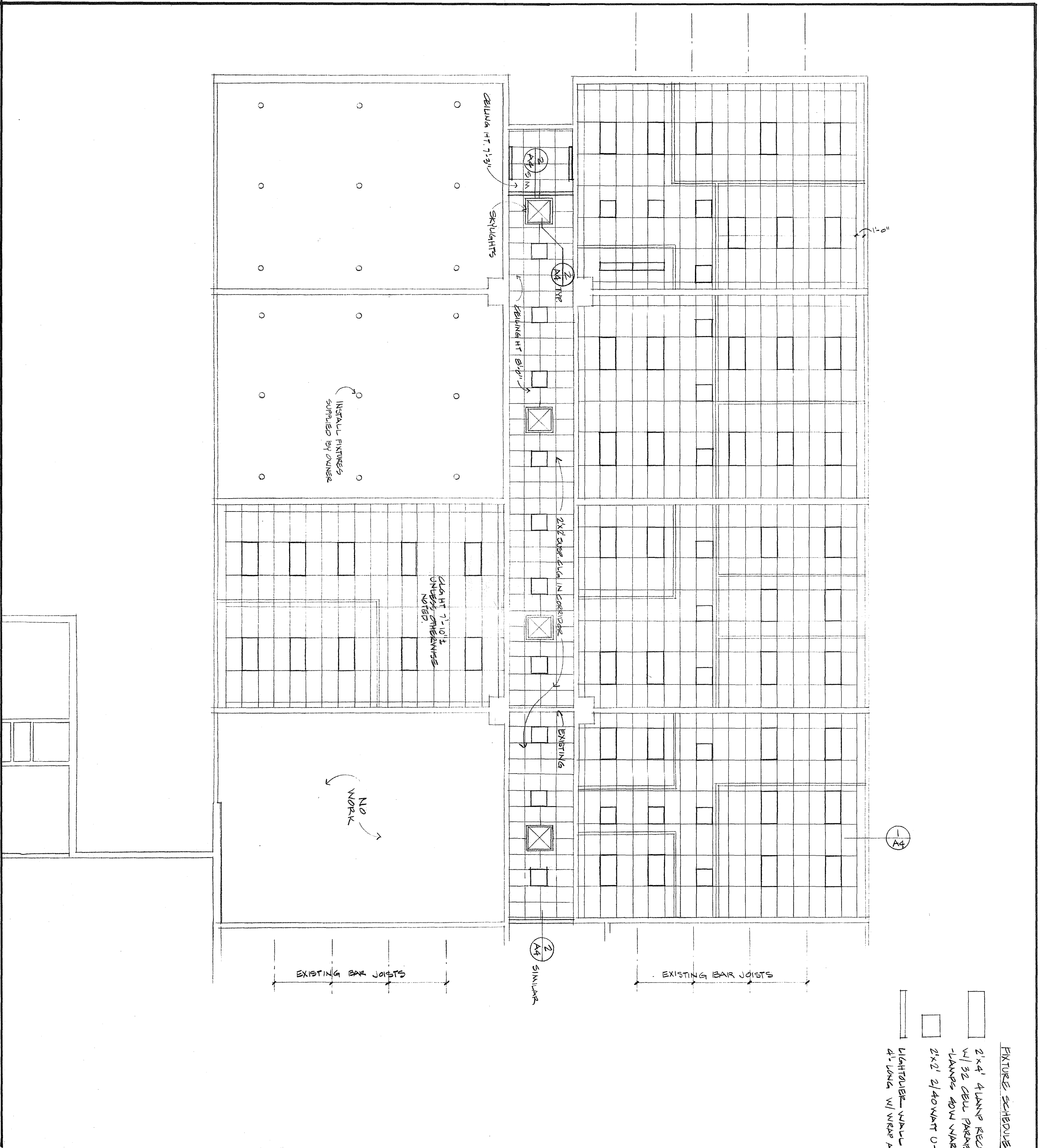


FIGURE SCHEDULE

- 2'x4' 4 LAMP RECESSED FIXTURE W/ 32 CEILING PARABOLIC GLASS LAMPS 40W WARM WHITE TYP.
- 2'x2' 2/40 WATT U-LAMPS
- LIGHTRAIL - WALL MTD. FLUORESCENT LAMPS W/ WRAP AROUND ACQUILIC LENS

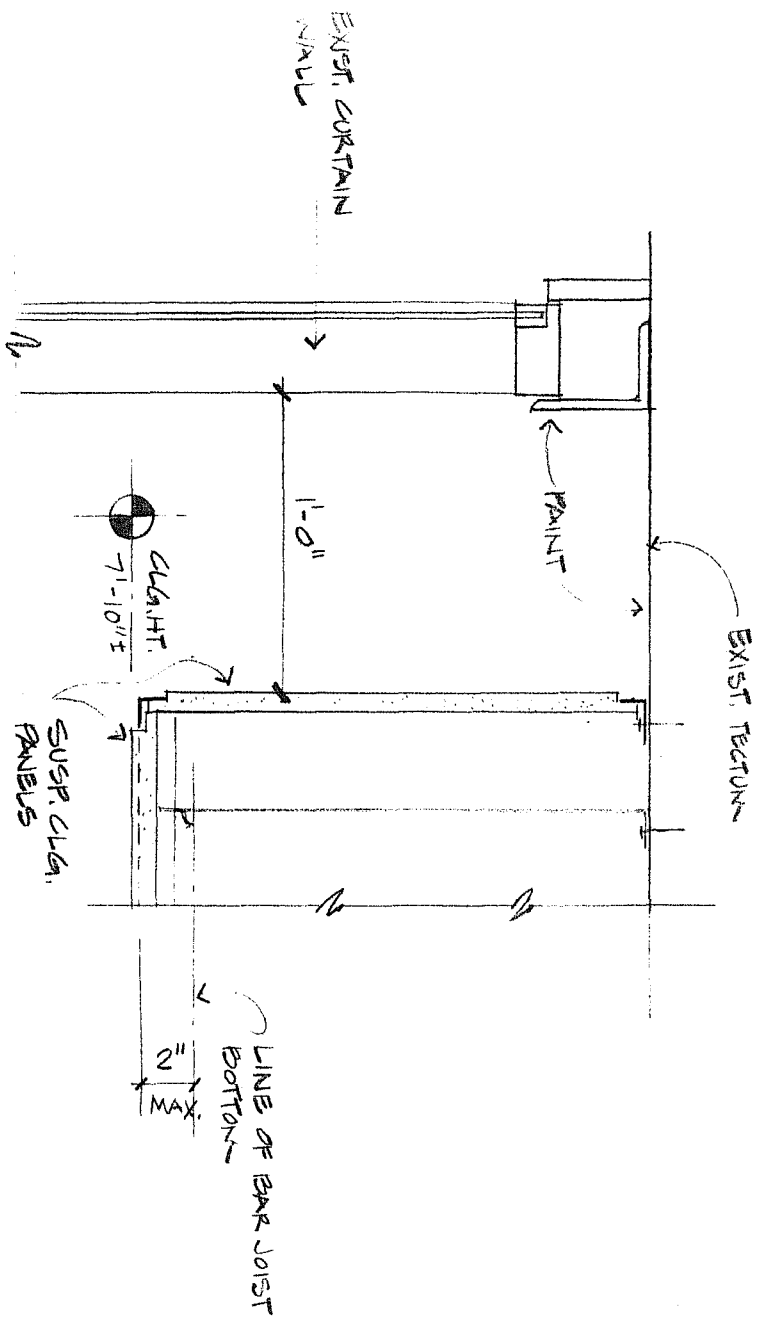
Sudbury School Dept.

Relocation to the Fairbank Facility
Sudbury MA

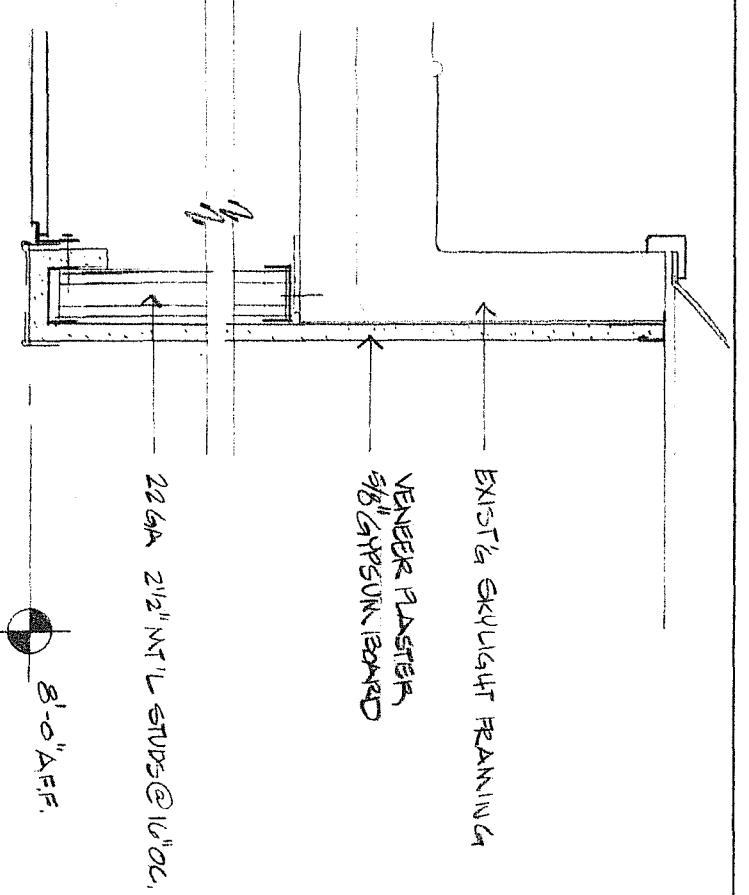
r i z z a
associates



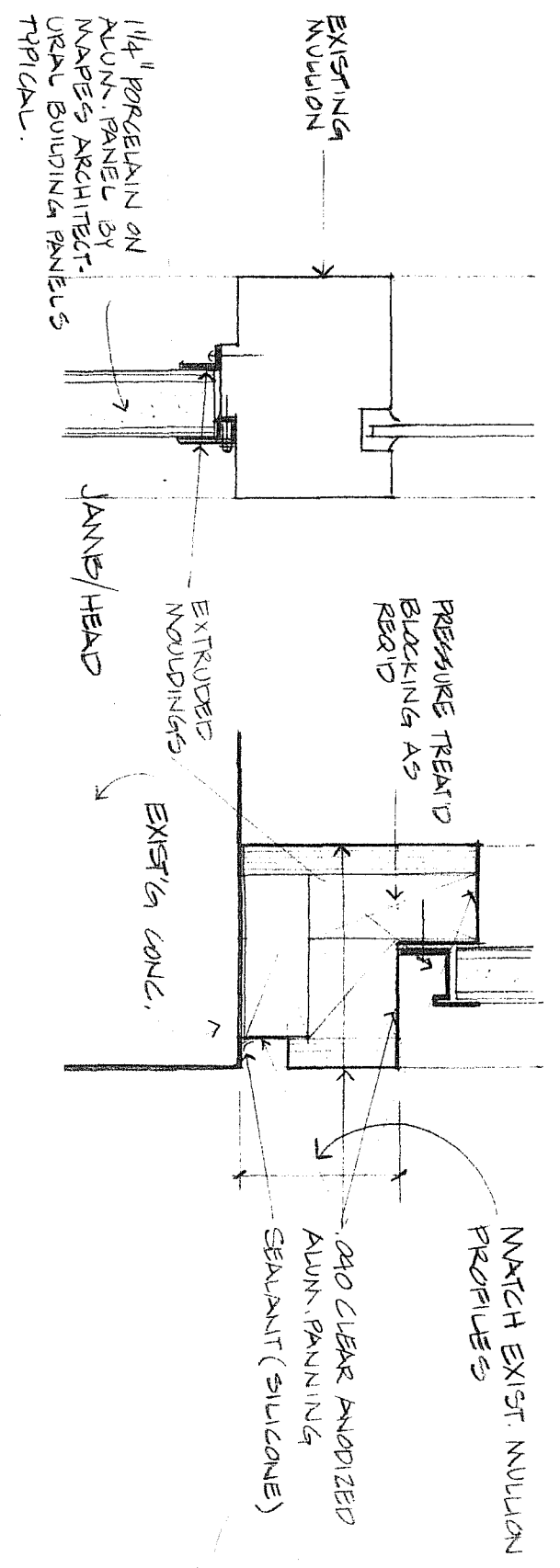
A.2



1. CONDITION @ CEILING RETURN 1 1/2" = 1'-0"

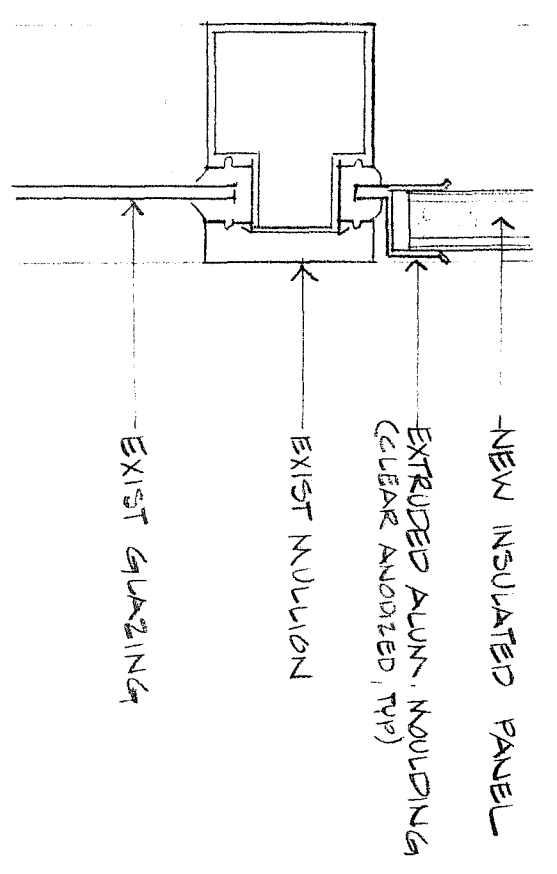


2. CORRIDOR CEILING @ EXISTING SKYLIGHTS 1 1/2" = 1'-0"



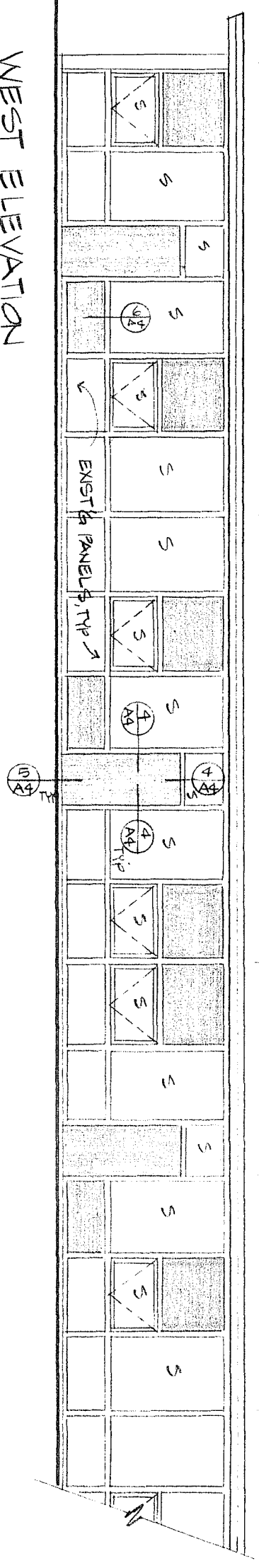
4. PANEL DTL @ DOOR INFIL 3 1/2" = 1'-0"

5. PANEL DTL @ DOOR INFIL 3 1/2" = 1'-0"



6. PANEL DTL @ WINDOW INFIL 3 1/2" = 1'-0" CONDITION SIMILAR

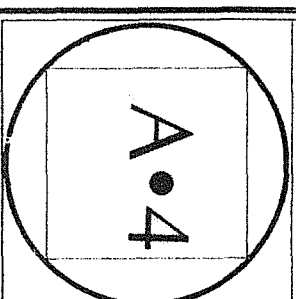
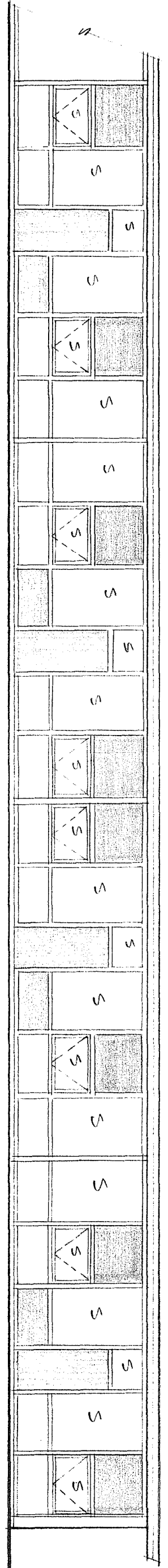
WEST ELEVATION
1/8" = 1'-0"



LEGEND
INDICATES NEW INSULATED METAL PANELS, COLOR AS SELECTED BY ARCHITECT

NOTE:
- ALL WINDOWS LABELED W/ AND "S" TO HAVE 50% LIGHT TRANSMISSION PLAN APPLIED TO INTERIOR SIDE OF GLASS BEFORE INSTALLING CLEAN GLASS OF ALL FOREIGN MATERIALS.

EAST ELEVATION
1/8" = 1'-0"



Sudbury School Dept.

Relocation to the Fairbank Facility
Sudbury, MA

r i z z a
associates

architects: 7 court street, arlington, ma 02174
tel: 617-641-2340 fax 617-641-2344

