

FOR CONTINUATION OF PIPING, REFER TO DWG. M-2.

NOTE:
COORDINATE DIFFUSERS AND REGISTER LOCATIONS WITH ARCHITECTURAL REFLECTED CEILING PLAN DESIGNED BY RIZZA ASSOCIATES. OBTAIN REFLECTED CEILING PLAN FROM OWNER.

10X10 DOOR GRILLES (TYPICAL FOR (3) OFFICE DOORS FURNISHED AND INSTALLED BY HVAC CONTRACTOR.

FOR CONTINUATION OF DUCTWORK, REFER TO DWG. M-2.

FOR CONTINUATION OF PIPING, REFER TO DWG. M-2.

NORTHEAST
CONSULTING ENGINEERS

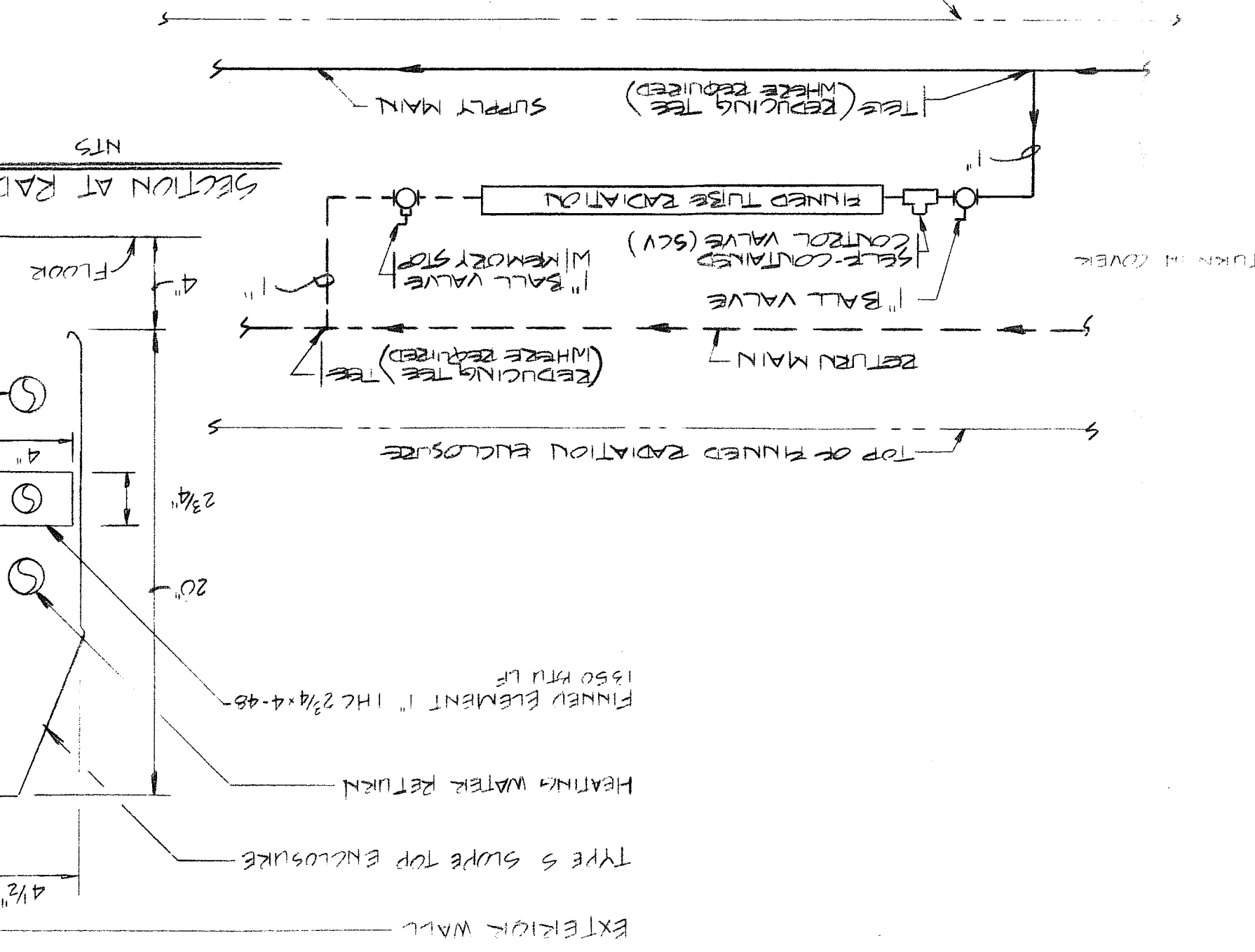
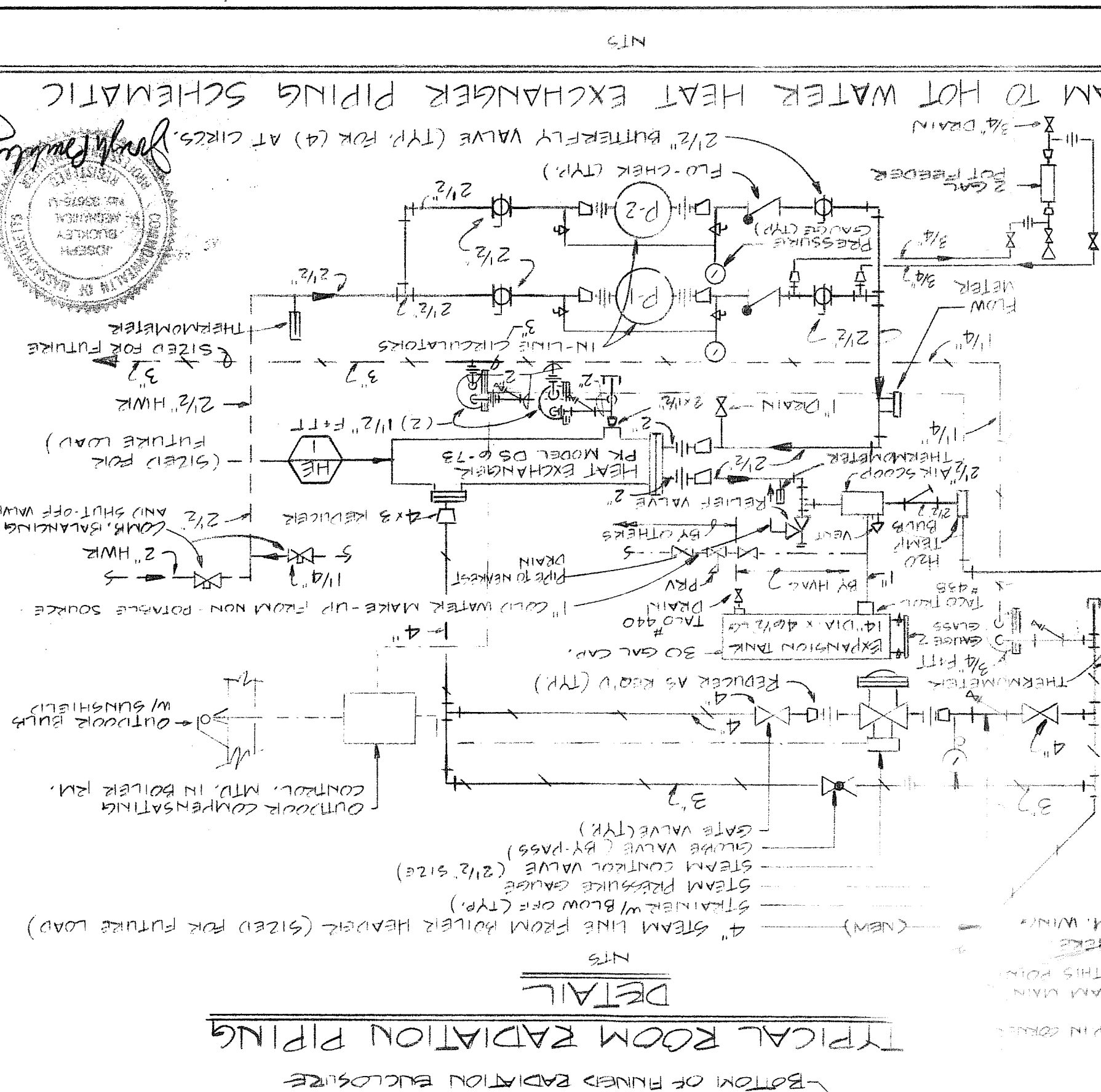
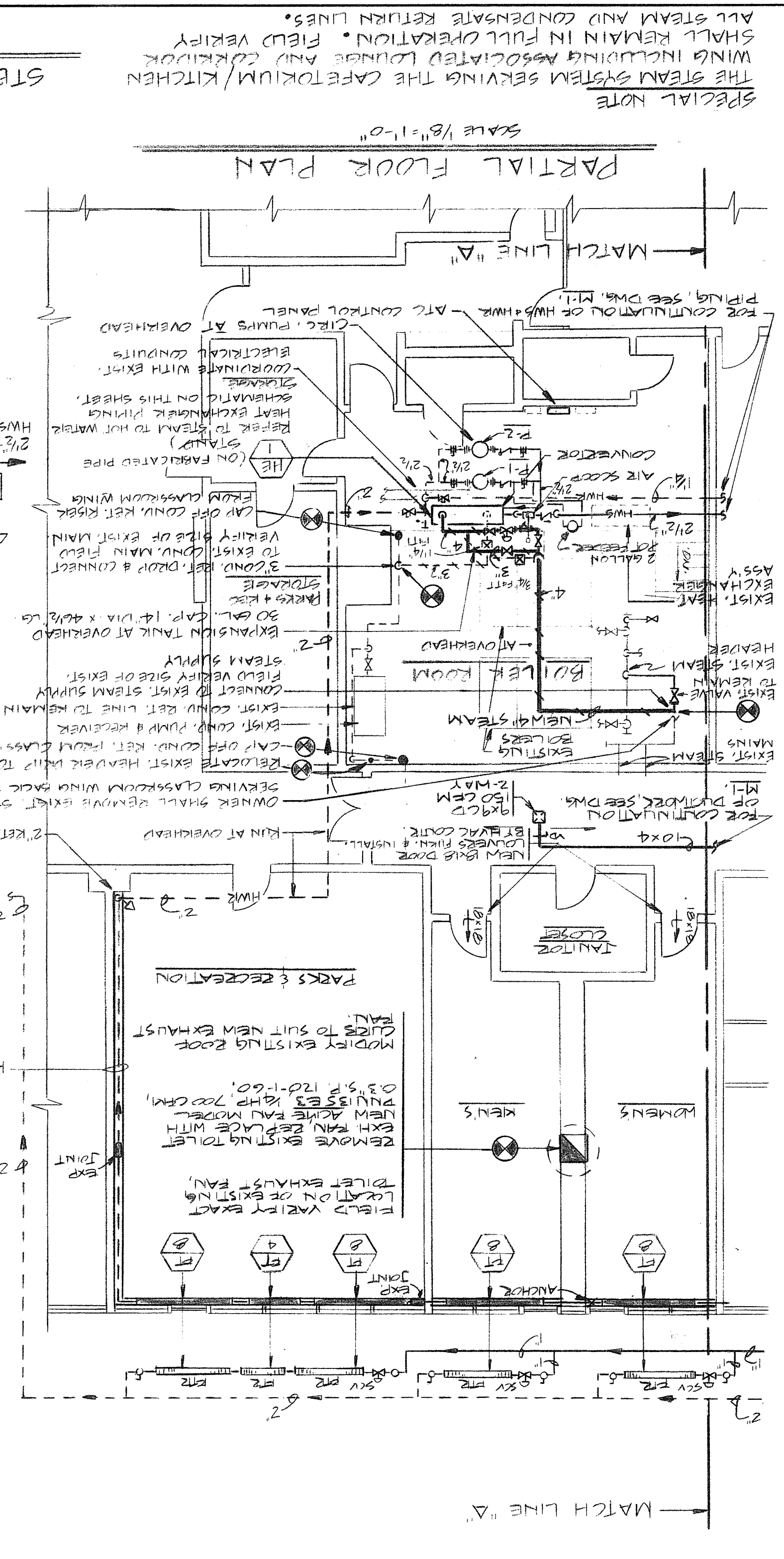
101 EAST GROVE ST. MIDDLEBORO, MA
TEL (508) 947-3514 FAX (508) 947-4814

Sudbury School Dept.
Relocation to the Fairbank Facility
Sudbury, MA

HVAC PARTIAL FLOOR PLAN

M-1

6-8-90



DATE: 6-8-90
PROJECT: HVAC PARTIAL FLR. PLAN & DETAILS

M-2

Sudbury School Dept.
Relocation to the Fairbank Facility
Sudbury, MA

NORTHEAST
CONSULTING ENGINEERS

101 EAST GROVE ST. MIDDLEBORO, MA
TEL (508) 947-3514 FAX (508) 947-4944

Date: 6-8-90

M-3

Sudbury School Dept.
Relocation to the Fairbank Facility
Sudbury, MA

LEGEND AND SCHEDULES

NORTHEAST CONSULTING ENGINEERS
101 EAST GROVE ST MIDDLEBORO, MA
TEL (508) 947-3514 FAX (508) 947-4844



Joseph J. Kelly

BASED ON DUNHAM BUSH

MARK	MODEL	CFM TSP	O.A. CFM	FAN H.P.	FILTER	HEATING COIL (STD) CROSSING COIL	INTERLOCK
CC-2000	DUNHAM BUSH 1995	1.0	700	3/4	1" T.A.	105 11.0 44 43 51.2 87.3 6 83.5 55.0 67.5 54.2	REMOVE CONDENSATE FROM UNIT
CUH-1	175	200	0.35	120	1	CABINET 180° 2.0	CABINET TRAP SURFACE MTR

BASED ON TACO

PUMP NO.	MODEL	SIZE	TYPE	GPM	SERVICE	HEAD IN FEET	HP	CURRENT	V PH	RPM	REMARKS
P-1	1614	30	INLINE	40.0	HEAT EXCHANGER	30	3/4	208	3	1750	
P-2	1614	30	INLINE	40.0	"	30	3/4	208	3	1750	(STAND BY)

BASED ON TACO

UNIT NO.	MODEL	TYPE	TEMP	AVG	PIPE SIZE	PIPE SIZE	ENCLOSURE LENGTH OF	ENCLOSURE HEIGHT	FIN/FT	FIN/FT	REMARKS
FT-4	1350	170	"	2 1/2" x 4"	48	TYPES 420	4'-0"	SUPPLY & RETURN IN COVER / SEE DETAIL			
FT-5							5'-0"				
FT-6							6'-0"				
FT-7							7'-0"				
FT-8							8'-0"				
FT-9							9'-0"				

BASED ON YORK

UNIT NO.	MODEL	TYPE	TEMP	AVG	PIPE SIZE	PIPE SIZE	ENCLOSURE LENGTH OF	ENCLOSURE HEIGHT	FIN/FT	FIN/FT	REMARKS
CU-1	HCAP90	167 7/2	95	87.300	40°	3/4	208	3	183	30.1	MTR ON 8" x 8" SUBERS W/ VIBRATION ISOLATORS

HEAT EXCHANGER SCHEDULE

UNIT NO.	GPM MAX PD	TEMP	PH	PH	TOTAL	WHEEL NO.	REMARKS
HE-1	94	5.9	160°	180°	940	2	940 D56-73 MTR, ON FABRICATED PIPE STAND

NOTE: 1. BRACING SUPPORTS FOR PANEL MTD. "THRU THE WALL" AIR CONDITIONERS SHALL BE BY THE HVAC CONTRACTOR TO SUIT FIELD CONDITIONS

2. REFER TO DRAWING NO M-1 FOR LOCATIONS OF EACH UNIT

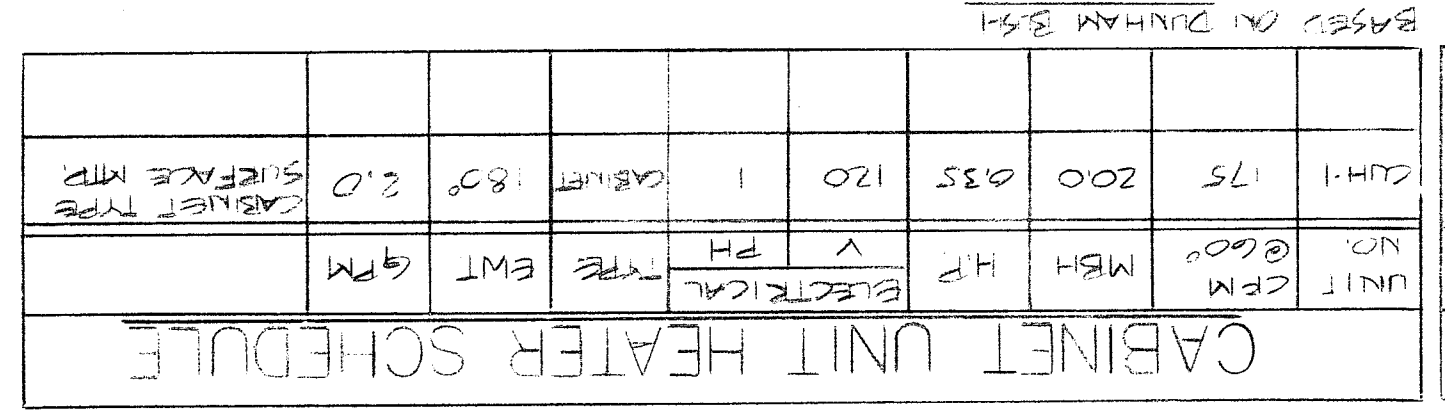
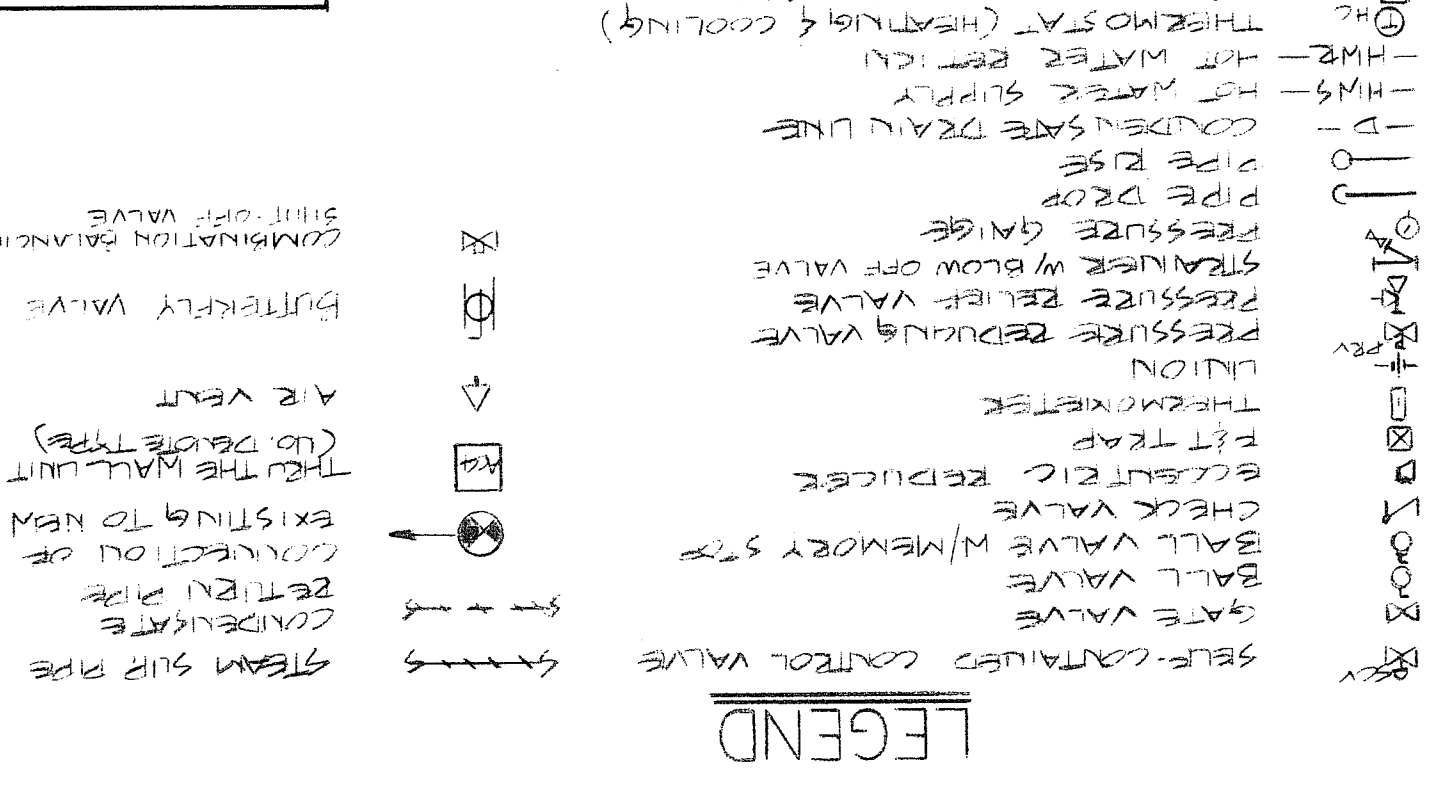
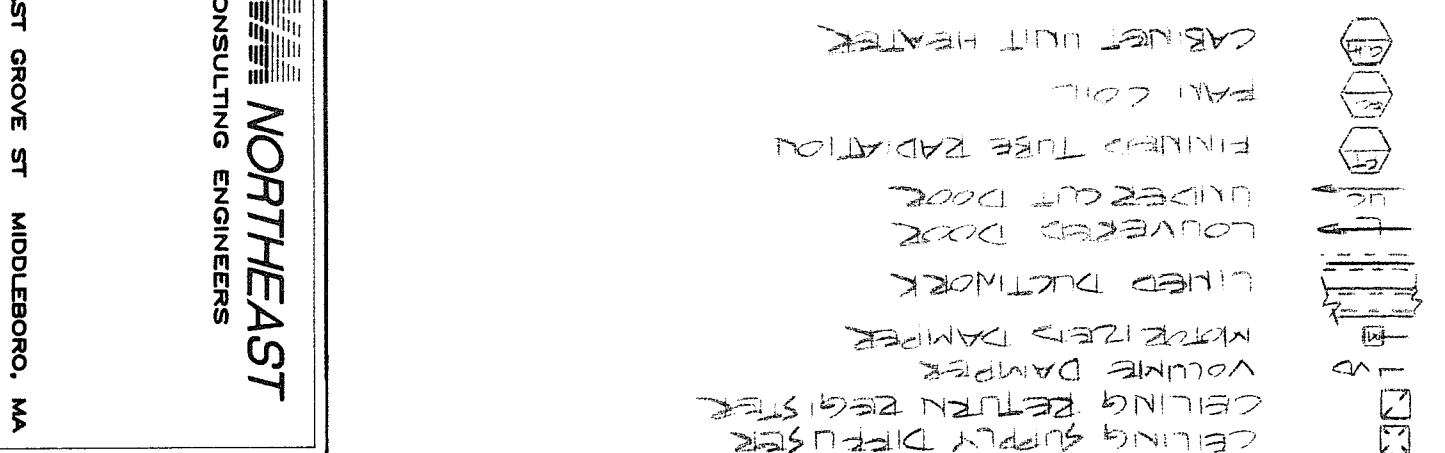
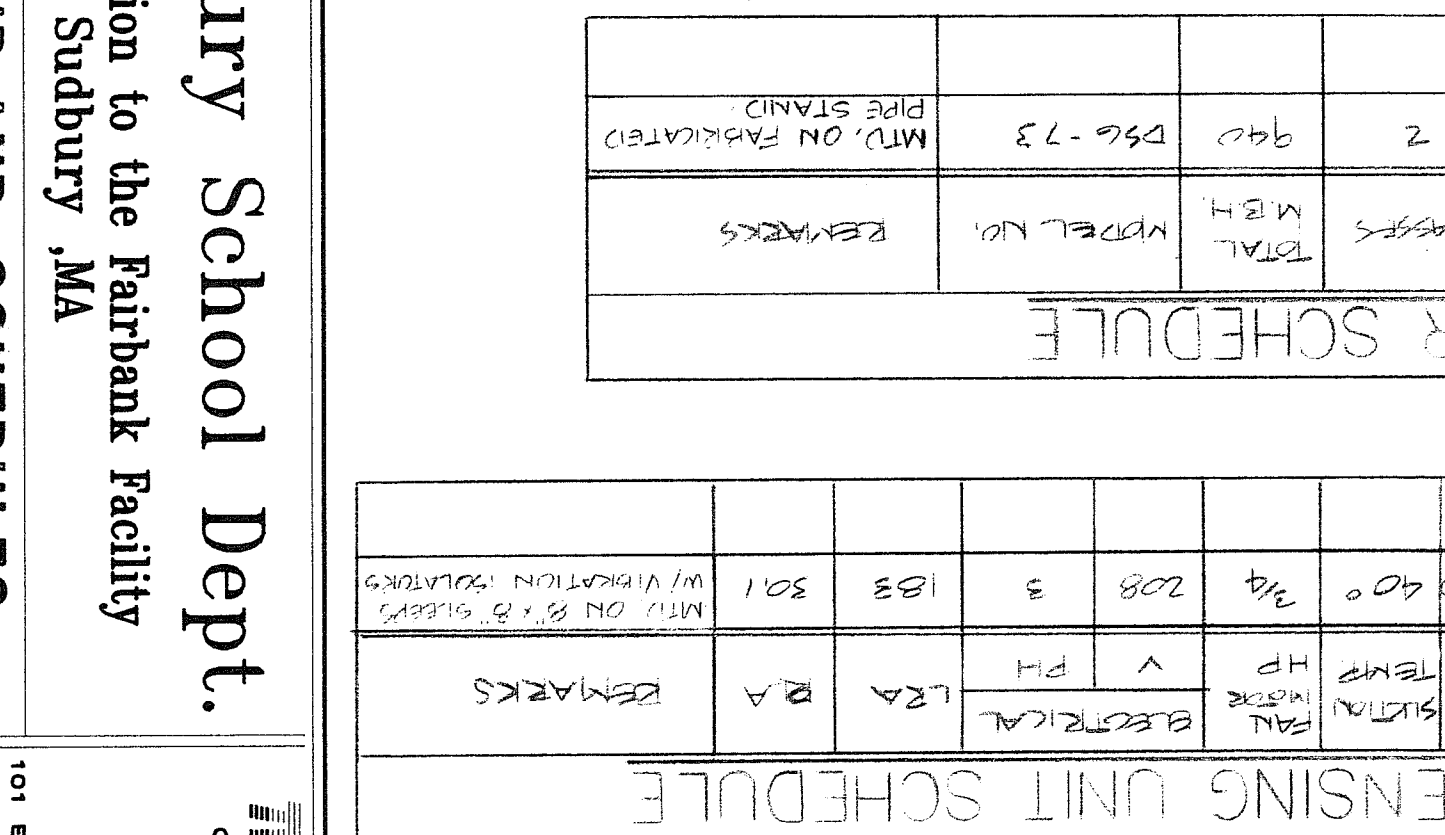
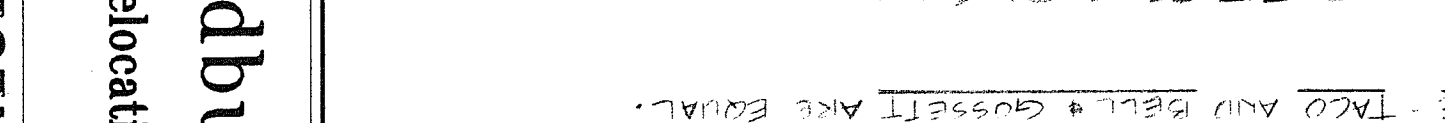
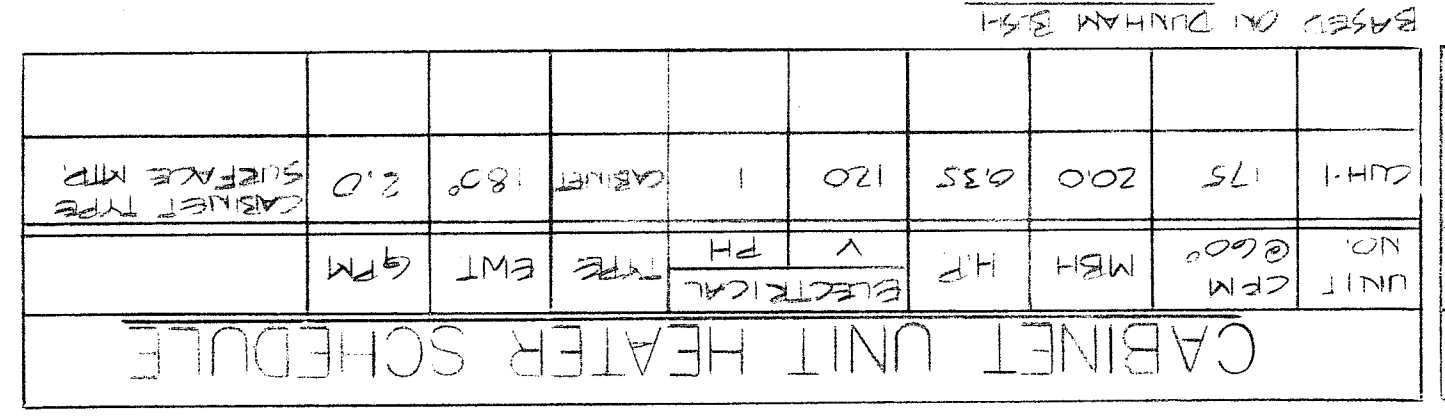
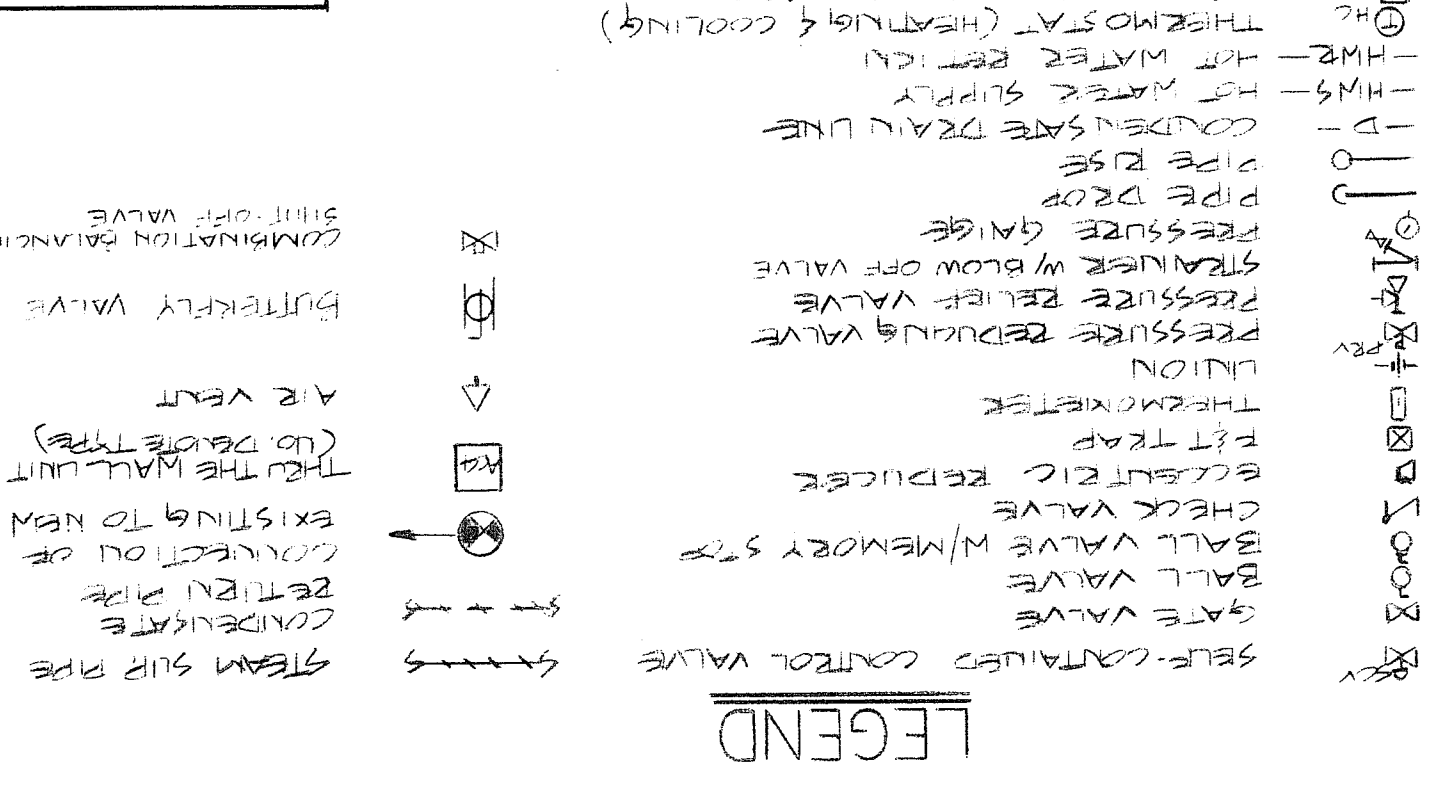
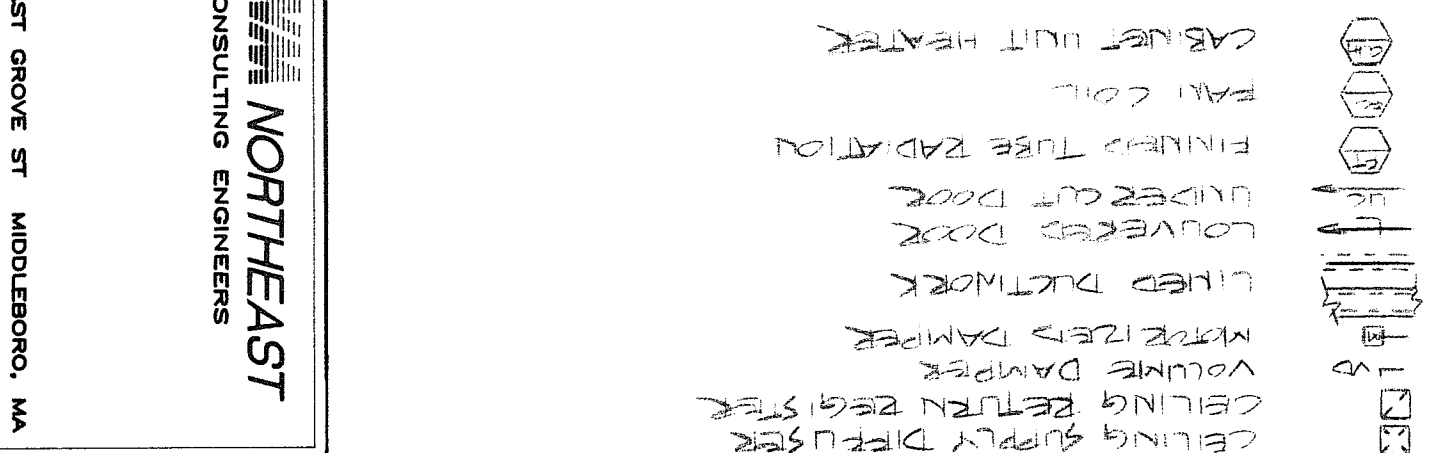
3. THRU THE WALL AIR CONDITIONING UNITS SHALL BE INSTALLED IN INSULATED PANELS LOCATED ABOVE OPERABLE SASHES AND/OR IN INSULATED PANELS IN FORMER EXTERIOR DOOR LOCATION. (COORDINATE WITH THE OWNER)

NOTE: 1. HEAT EXCHANGER SIZED FOR FUTURE EXPANSION.

2. ACTUAL GALLOUNAGE - 40

3. STEAM PRESSURE 2 PSIG IN SHELL

BASED ON PATERSON-KELLEY. NOTE - TACO AND BELL + GOSSETT ARE EQUAL.





M-4

Sudbury School Dept.

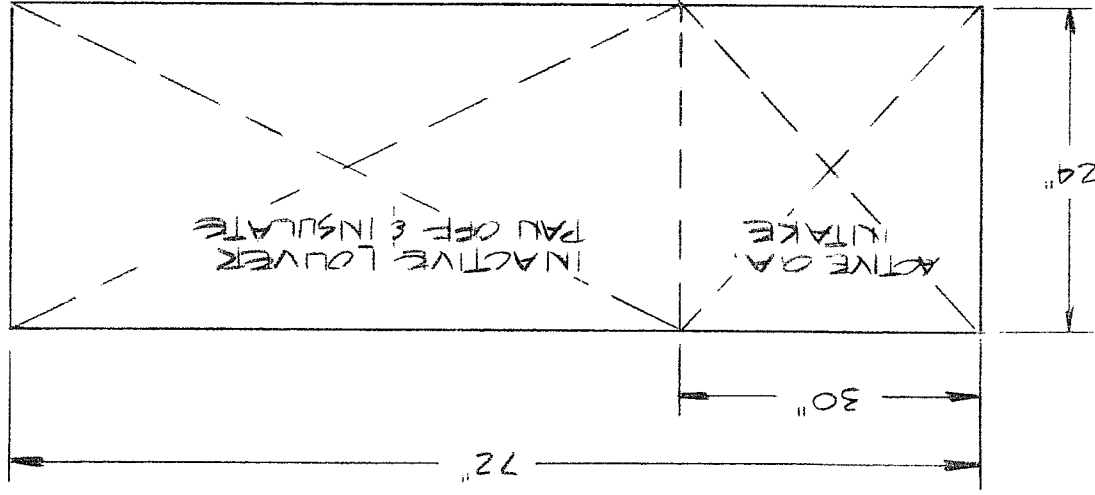
Relocation to the Fairbank Facility

NORTHEAST CONSULTING ENGINEERS

FC-1 OUTDOOR AIR LOUVER

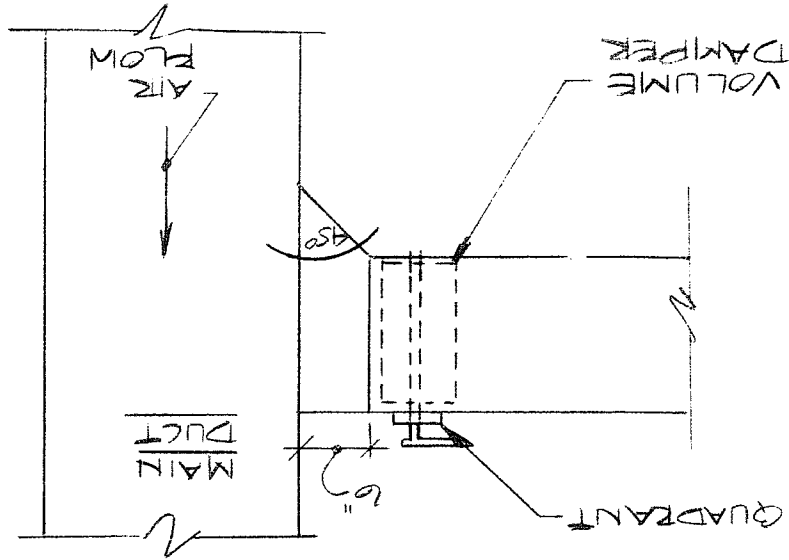
NOT TO SCALE

- MOUNT OVER EXTERIOR DOOR.
- VIEW OF LOUVER IS LOOKING TOWARD EXTERIOR FROM CORRIDOR



BRANCH DUCT CONNECTION DETAIL

NOT TO SCALE



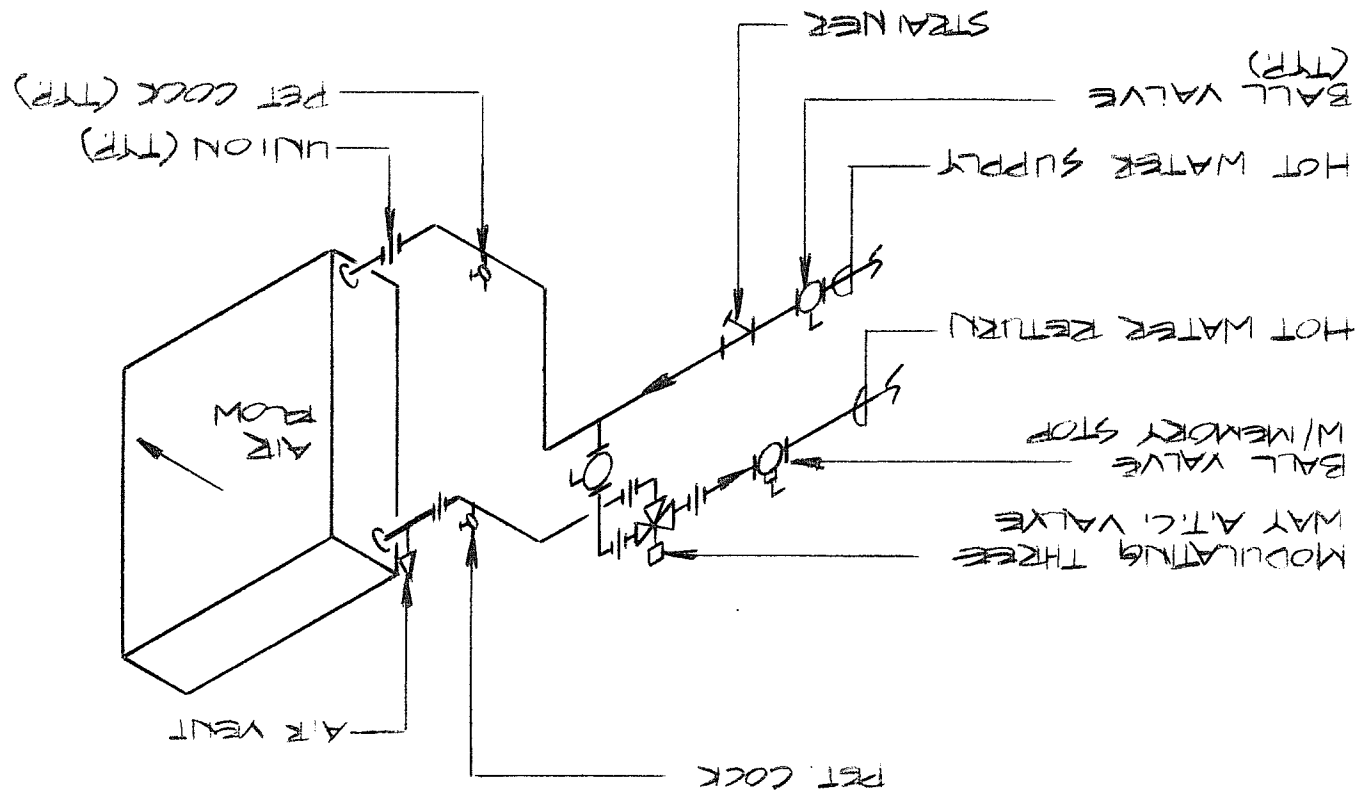
EXHAUST FAN SCHEDULE

UNIT NO.	CFM	S.P.	H.P.	MODEL	REMARKS
ES-1	700	0.8	1/4	PUN 135E	MODIFY EXISTING
					CHG TO SUIT FAN

BASED ON ACME

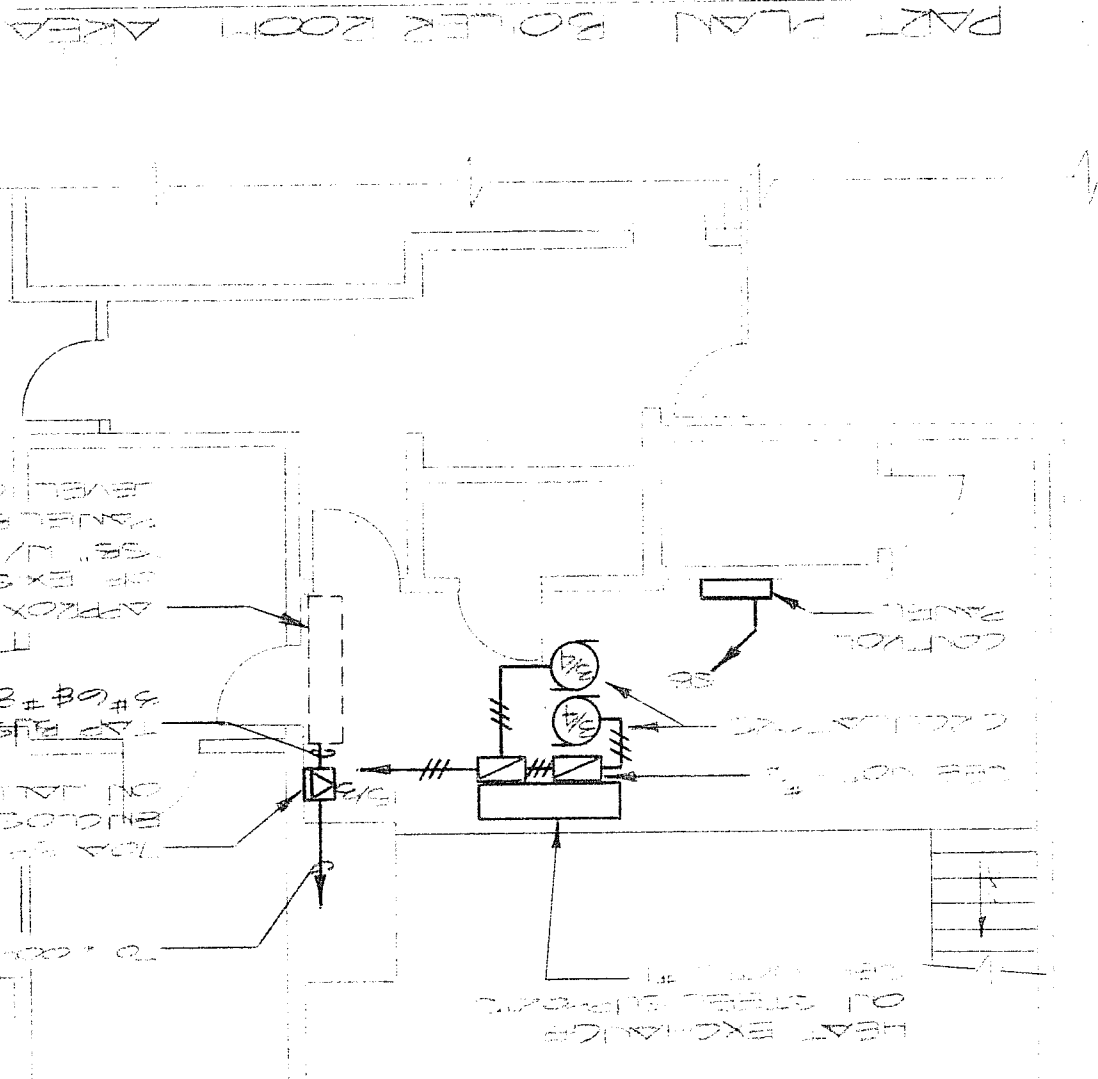
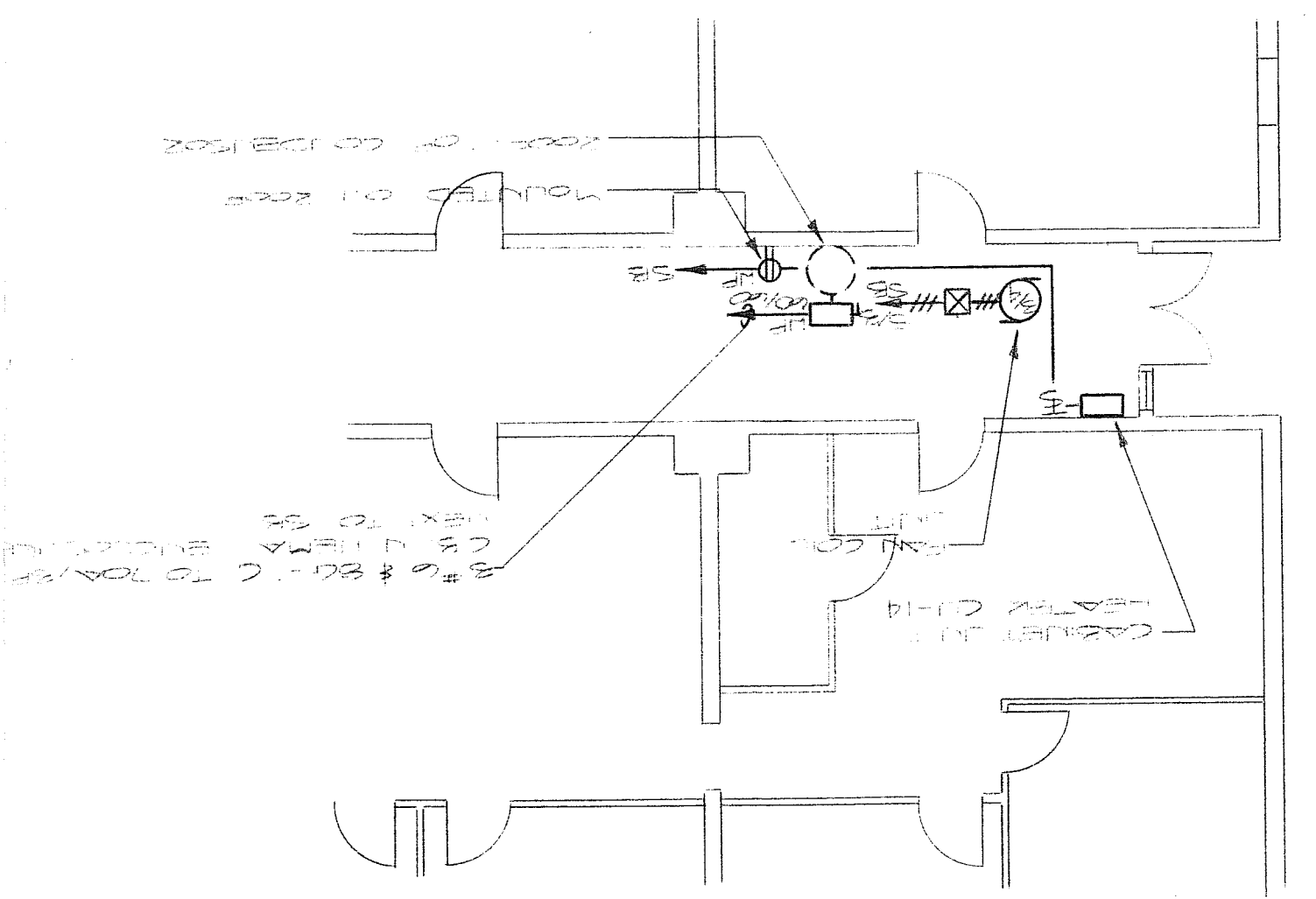
TYPICAL PIPING TO HOT WATER COIL

NOT TO SCALE



SCHEDULED AND TAKING USE OF THE VOLTAGE
 CONTAINED IN THIS SET OF DRAWINGS
 CONTAINED IN THE LEGEND (2) OF THIS SET
 OF DRAWINGS SHALL BE USED BY THE
 ELECTRICAL ENGINEER TO BE THE ONLY
 AUTHORITY TO BE REFERRED TO FOR ALL
 ELECTRICAL WORK SHOWN ON THESE
 DRAWINGS. ALL ELECTRICAL WORK
 SHOWN ON THESE DRAWINGS SHALL BE
 ACCORDING TO THE NATIONAL ELECTRICAL
 CODE (NEC) AND THE MASSACHUSETTS
 ELECTRICAL CODE (MELC) AS AMENDED
 AND ALL OTHER APPLICABLE CODES AND
 REGULATIONS. THE ENGINEER SHALL
 BE RESPONSIBLE FOR OBTAINING ALL
 NECESSARY PERMITS AND APPROVALS
 FROM THE APPROPRIATE AUTHORITIES.
 NOTES:
 MOTOR CONTROLS - TO BE INSTALLED BY THE
 ELECTRICAL ENGINEER - REFER TO THE
 ELECTRICAL SPECIFICATIONS FOR
 ADDITIONAL INFORMATION.
 CONTROL - TO BE INSTALLED BY THE
 MECHANICAL ENGINEER - REFER TO THE
 MECHANICAL SPECIFICATIONS FOR
 ADDITIONAL INFORMATION.
 ALL OTHER ELECTRICAL WORK SHALL
 BE AS SHOWN ON THESE DRAWINGS.
 A WEATHER-RESISTANT ENCLOSURE
 SHALL BE PROVIDED FOR THE MOTOR
 CONTROLS.

PART PLAN CLASSROOM AREA
SCALE 1/8"=1'-0"



PART PLAN BOILER ROOM AREA
 SCALE 1/8"=1'-0"
 NOTES:
 MOTOR CONTROLS - TO BE INSTALLED BY THE
 ELECTRICAL ENGINEER - REFER TO THE
 ELECTRICAL SPECIFICATIONS FOR
 ADDITIONAL INFORMATION.
 CONTROL - TO BE INSTALLED BY THE
 MECHANICAL ENGINEER - REFER TO THE
 MECHANICAL SPECIFICATIONS FOR
 ADDITIONAL INFORMATION.
 ALL OTHER ELECTRICAL WORK SHALL
 BE AS SHOWN ON THESE DRAWINGS.
 A WEATHER-RESISTANT ENCLOSURE
 SHALL BE PROVIDED FOR THE MOTOR
 CONTROLS.

E-1

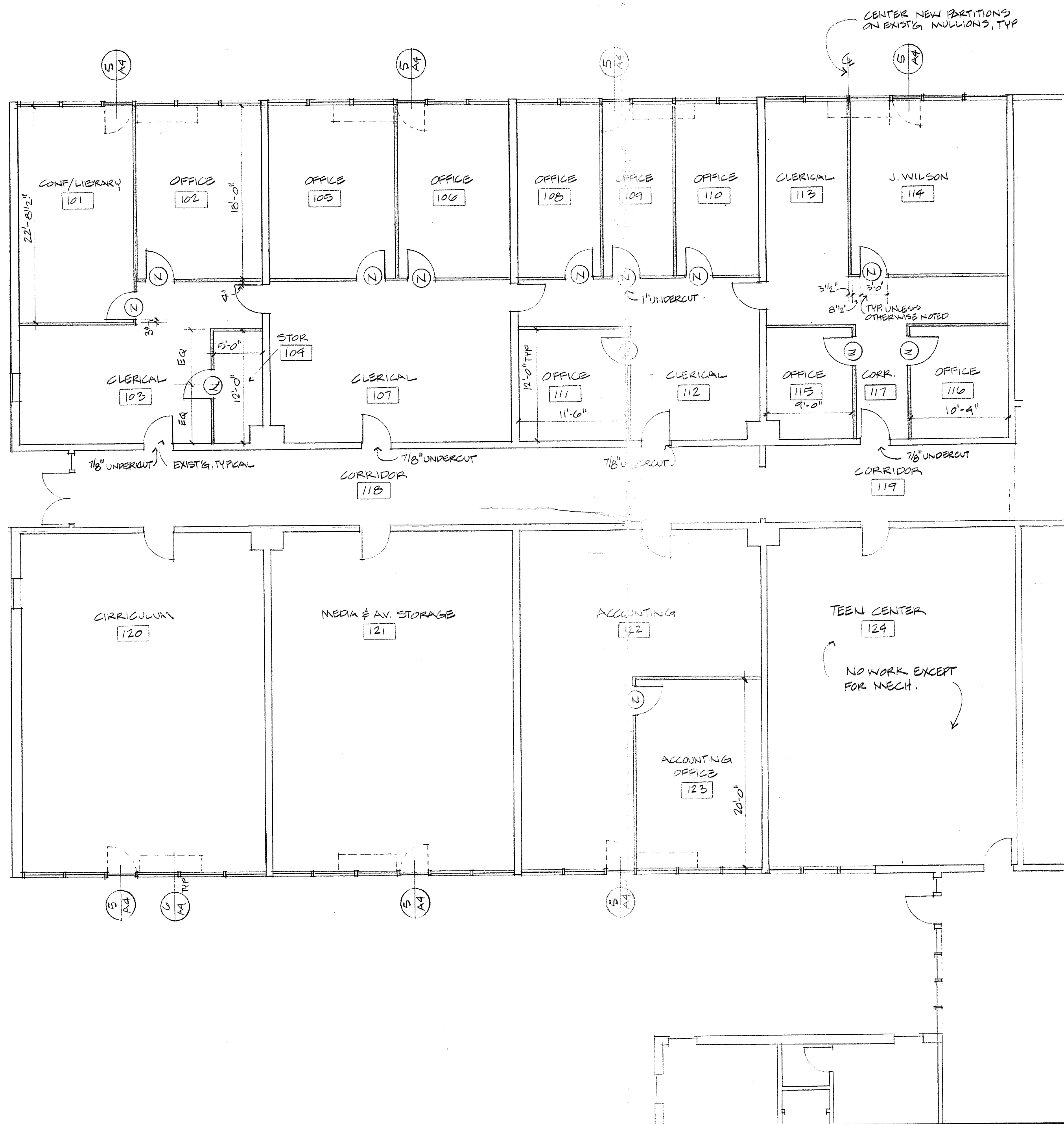
Sudbury School Dept.
Relocation to the Fairbank Facility
Sudbury, MA

ELECTRICAL - PART PLANS & LEGEND



101 EAST GROVE ST MIDDLEBORO, MA
 TEL (508) 947-3314 FAX (508) 947-1844

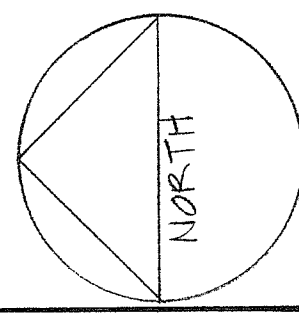
DATE 6-8-90



- NOTES:**
1. REMOVE ALL EXISTING CASEWORK, SHELVING, CHALK & TACK BOARDS, PARTITIONS, ETC. IN ROOMS 101-123.
 2. REMOVE EXIST'G FAN COIL UNITS AND PIPING & PATCH TO MATCH AS REQ'D.
 3. REMOVE EXIST'G RUBBER BASE IN AREAS TO RECEIVE CARPET.
- (N) INDICATES NEW DOOR SUPPLIED BY PRE-FAB PARTITION INSTALLER.
- ==== INDICATES PREFAB PARTITIONS HEAD TRACK TO BE MOUNTED TO CEILING GRID. INSTALL 6" THICK FIBERGLASS INSULATION MIN. 2" EITHER SIDE OF PARTITIONS FOR OFFICE 102 & 114.



r i z a associates	
Sudbury School Dept. Relocation to the Fairbank Facility Sudbury, MA	
A.1	Title: FLOOR PLAN Date: 5/29/90
architects: 7 court street, arlington, ma 02174 tel: 617-641-2340 fax: 617-641-2344	





EXISTING BAR JOISTS

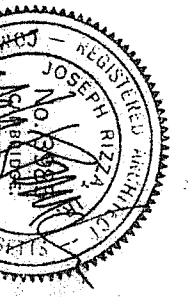
EXISTING BAR JOISTS

- FIXTURE SCHEDULE**
- 2'x4' PLAMP RECESSED FIXTURE
 - W/ 3/2 CELL PARABOLIC GRIP
 - LAMPS 40W WARM WHITE TYP.
 - 2'x2' 2/40WATT U-LAMPS
 - LIGHTTUBES W/ WARP AROUND ACRYLIC LENS

A.2

Sudbury School Dept.
Relocation to the Fairbank Facility
Sudbury MA

r i z z a
associates



1-10'-0"

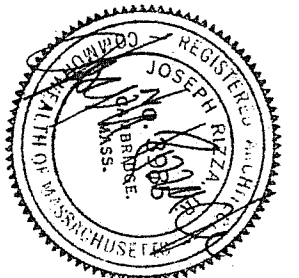
2'-0"

2'-0"

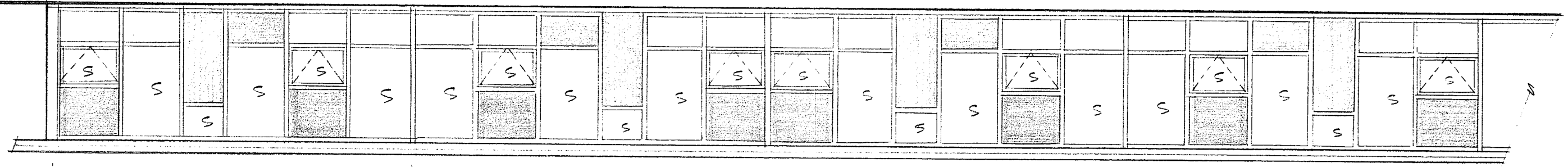
2'-0"

2'-0"

2'-0"



EAST ELEVATION
 1/8"=1'-0"



NOTE:
 -ALL WINDOWS LABELED W/ AN "S"
 TO HAVE 50% LIGHT TRANSMISSION
 FILM APPLIED TO INTERIOR SIDE OF
 GLASS, BEFORE INSTALLING CLEAN
 GLASS, FOR ALL FOREIGN MATERIALS.
 LEGEND
 INDICATES NEW INSULATED
 METAL PANELS, COLOR AS
 SELECTED BY ARCHITECT

WEST ELEVATION
 1/8"=1'-0"

