



BARGMANN HENDRIE + ARCHETYPE, INC.

Architecture | Planning | Interior Design

9 Channel Center Street
Suite 300
Boston, MA 02210

617 350 0450
bha@bhplus.com
www.bhplus.com

agenda

date: December 1, 2021

project name & number: Fairbank Community Center
BH+A Project No. 3452

subject: General Review of Fairbank CC Design

distribution:

Kay Bell, Chair	Sudbury Commission on Disability
Jennifer Pincus	Permanent Building Committee
Chris Eberly	Compass Project Management
Jeff D'Amico	Compass Project Management
Bill Barletta	Town of Sudbury
Joel Bargmann	BH+A

Purpose: The meeting will allow BH+A to explain the proposed Fairbank Community Center to the Commission on Disability, answer questions, and receive comments and suggestions.

The primary points of discussion include:

- Accessible Parking
- Building Entries
- Access to Senior Center and Recreation Department Program Spaces
- Access to Sudbury Public Schools Offices
- Toilet and Locker Room Design Features
- Access to Outdoor Areas
- Phasing and maintaining existing building functions during construction.

We will be using the recent Design Development site plan and floor plans and focus on the overall design. Except for some typical items included in the agenda, we will not be discussing specific finishes, hardware, or technology but would like to hear your comments and questions regarding these items.

The following are specific items we have been incorporating into our recent projects that will help illustrate a few of the design elements we will be discussing:

Fairbank Community Center
Commission on Disability Design Review Meeting Agenda
December 1, 2021
Page 2

Accessible Parking, Drop-Off and Building Access



Needham Senior Center



Randolph Intergenerational Community Center

Fairbank Community Center
Commission on Disability Design Review Meeting Agenda
December 1, 2021
Page 3

Accessible Entries/Reception



Needham Senior Center



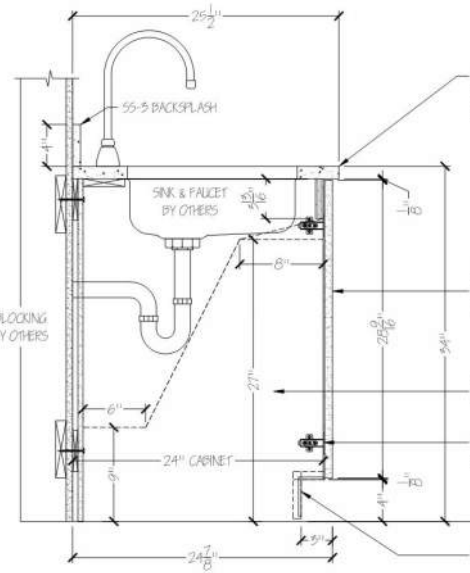
Falmouth Senior Center

Accessible Exterior Spaces



Scituate Senior Center

Accessible Casework



MAAB Compliant Accessible Sink Base Cabinet- Andover Senior Center

Accessible Toilet/Shower Rooms

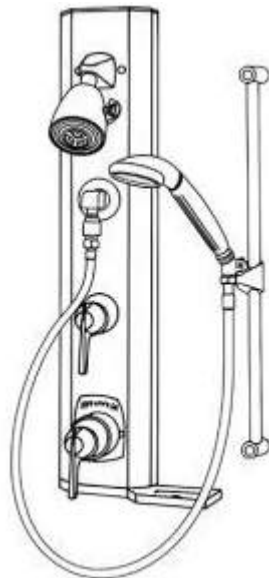


Scituate Senior Center

Typical Accessible Elements



High Low Drinking Fountain/Bottle Filler



Typical Locker Room Accessible Shower



Accessible Hand Dryer (4-inch projection)



Compliant Locker and Bench Requirements

Adult Changing Table

