

**PHASE 1**

Grinnell Park

- Expanded and more accessible to public use with the construction of an expanded walkway system
- Expanded War Memorial Garden. Stone dust will be installed around the War Memorial at this time.
- 5 trees in Grinnell Park are proposed to be removed due to their health and condition, as shown on the plan. These trees are currently flagged with pink flagging tape for inspection by the HDC.
- Plantings in Grinnell Park along the southern lot line and around the detention basin.
- The stone wall running north south through the park will be relocated along the Hudson Road frontage.
- Street lamps (24 overall) will be replaced along Hudson and Concord Roads.

Town Common

- 3 trees removed
- Walkway installed through the Common connecting First Parish and Town Hall
- New street lamps
- 2-foot high granite and steel fence installed along the western and southern sides of the Common
- Brick paving at the southwestern corner.

Town Hall

- Walkway across the frontage of the Town Hall, Grange and the Presbyterian Church, as well as a connection between the Grange and Church. Grinnell Park
- New stone wall with granite steps down to the No Name Road, and a walkway up to the front stairs

**PHASE 2**

Grinnell Park

- Additional plantings as shown on the Landscape Plan
- Granite benches installed
- Brick paving at the crosswalk on Concord Road
- Brick paving around the War Memorial Garden
- Installation of an amphitheater
- Installation of a second memorial garden

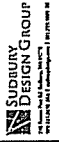
Town Common

- Landscape plantings
- Granite benches

Town Hall

- Brick semi-circular gathering area
- Landscape plantings

SUDBURY  
TOWN  
CENTER



NO. 1	PRELIMINARY CONCEPTS
NO. 2	PRELIMINARY CONCEPTS
NO. 3	PRELIMINARY CONCEPTS
NO. 4	PRELIMINARY CONCEPTS
NO. 5	PRELIMINARY CONCEPTS
NO. 6	PRELIMINARY CONCEPTS
NO. 7	PRELIMINARY CONCEPTS
NO. 8	PRELIMINARY CONCEPTS
NO. 9	PRELIMINARY CONCEPTS
NO. 10	PRELIMINARY CONCEPTS
NO. 11	PRELIMINARY CONCEPTS
NO. 12	PRELIMINARY CONCEPTS
NO. 13	PRELIMINARY CONCEPTS
NO. 14	PRELIMINARY CONCEPTS
NO. 15	PRELIMINARY CONCEPTS
NO. 16	PRELIMINARY CONCEPTS
NO. 17	PRELIMINARY CONCEPTS
NO. 18	PRELIMINARY CONCEPTS
NO. 19	PRELIMINARY CONCEPTS
NO. 20	PRELIMINARY CONCEPTS

DATE: JULY 22, 2015
DATE: AUGUST 10, 2015
DATE: AUGUST 10, 2015
DATE: AUGUST 10, 2015
DATE: AUGUST 10, 2015
DATE: AUGUST 10, 2015
DATE: AUGUST 10, 2015
DATE: AUGUST 10, 2015
DATE: AUGUST 10, 2015
DATE: AUGUST 10, 2015
DATE: AUGUST 10, 2015
DATE: AUGUST 10, 2015
DATE: AUGUST 10, 2015
DATE: AUGUST 10, 2015
DATE: AUGUST 10, 2015
DATE: AUGUST 10, 2015
DATE: AUGUST 10, 2015
DATE: AUGUST 10, 2015
DATE: AUGUST 10, 2015
DATE: AUGUST 10, 2015
DATE: AUGUST 10, 2015
DATE: AUGUST 10, 2015
DATE: AUGUST 10, 2015
DATE: AUGUST 10, 2015



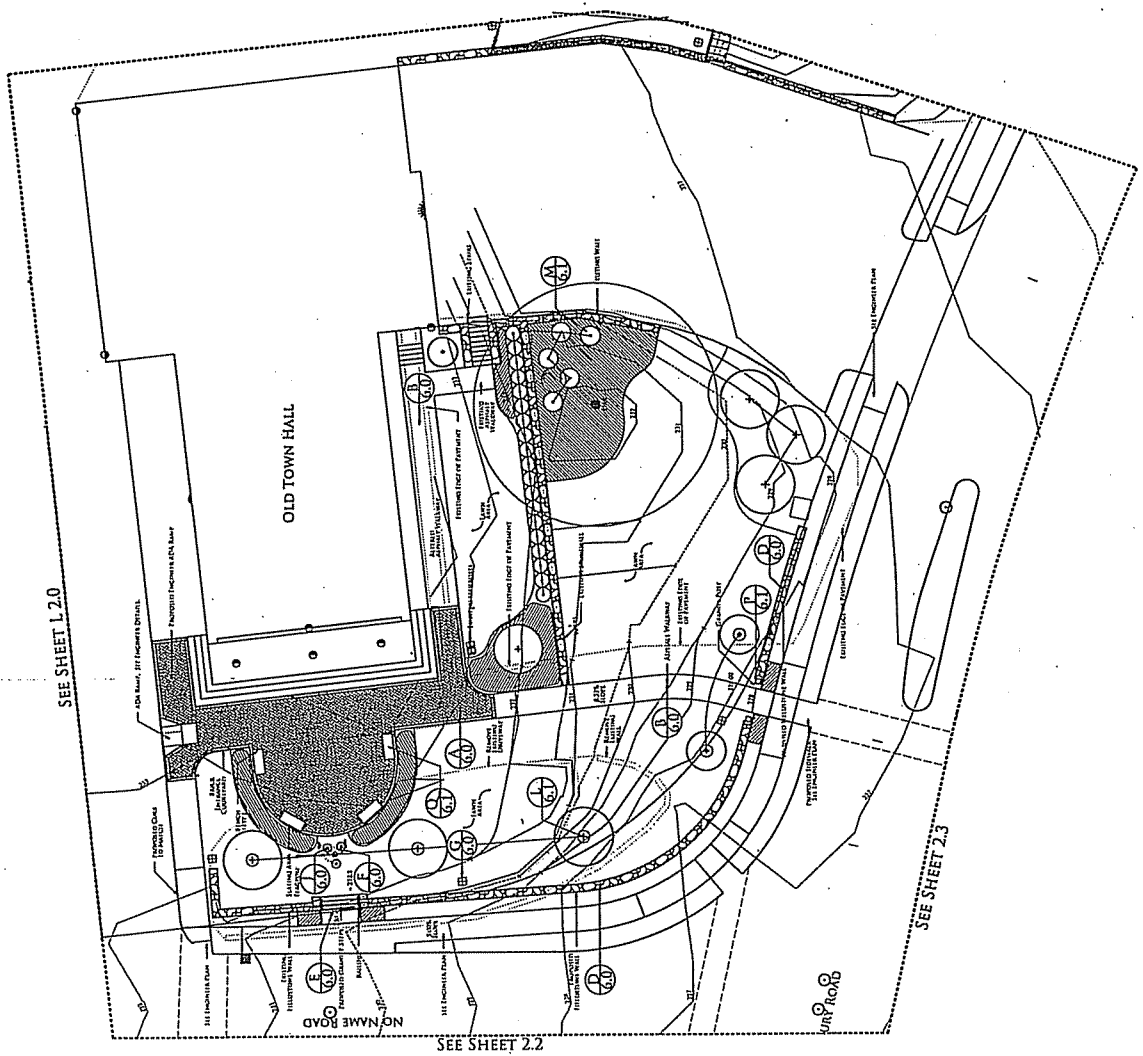
TOWN  
HALL  
AREA

LET THE TOWN HALL BE THE CENTER OF THE TOWN CENTER  
CONCEPTS FOR THE TOWN HALL AND TOWN CENTER  
DESIGN GROUP  
DESIGN GROUP

SCALE: 1" = 10' - 0"  
DATE: JULY 2015  
DRAWN BY: RW  
CHECKED BY: MC

SITE  
PLAN

L  
2.1



SEE SHEET 1.2.0

SEE SHEET 2.2

SEE SHEET 2.3



# SUBBURY TOWN CENTER

**SUBBURY  
DESIGN GROUP**  
300 Main Street, Suite 100, Subbury, VT 05782  
Tel: (802) 451-2200 Fax: (802) 451-2201

DATE	3/15/11
REVISION	
NO.	
DATE	
BY	
DESCRIPTION	
1	ISSUE FOR PERMIT
2	ISSUE FOR PERMIT
3	ISSUE FOR PERMIT
4	ISSUE FOR PERMIT
5	ISSUE FOR PERMIT
6	ISSUE FOR PERMIT
7	ISSUE FOR PERMIT
8	ISSUE FOR PERMIT
9	ISSUE FOR PERMIT
10	ISSUE FOR PERMIT
11	ISSUE FOR PERMIT
12	ISSUE FOR PERMIT
13	ISSUE FOR PERMIT
14	ISSUE FOR PERMIT
15	ISSUE FOR PERMIT
16	ISSUE FOR PERMIT
17	ISSUE FOR PERMIT
18	ISSUE FOR PERMIT
19	ISSUE FOR PERMIT
20	ISSUE FOR PERMIT
21	ISSUE FOR PERMIT
22	ISSUE FOR PERMIT
23	ISSUE FOR PERMIT
24	ISSUE FOR PERMIT
25	ISSUE FOR PERMIT
26	ISSUE FOR PERMIT
27	ISSUE FOR PERMIT
28	ISSUE FOR PERMIT
29	ISSUE FOR PERMIT
30	ISSUE FOR PERMIT

DATE	3/15/11
REVISION	
NO.	
DATE	
BY	
DESCRIPTION	
1	ISSUE FOR PERMIT
2	ISSUE FOR PERMIT
3	ISSUE FOR PERMIT
4	ISSUE FOR PERMIT
5	ISSUE FOR PERMIT
6	ISSUE FOR PERMIT
7	ISSUE FOR PERMIT
8	ISSUE FOR PERMIT
9	ISSUE FOR PERMIT
10	ISSUE FOR PERMIT
11	ISSUE FOR PERMIT
12	ISSUE FOR PERMIT
13	ISSUE FOR PERMIT
14	ISSUE FOR PERMIT
15	ISSUE FOR PERMIT
16	ISSUE FOR PERMIT
17	ISSUE FOR PERMIT
18	ISSUE FOR PERMIT
19	ISSUE FOR PERMIT
20	ISSUE FOR PERMIT
21	ISSUE FOR PERMIT
22	ISSUE FOR PERMIT
23	ISSUE FOR PERMIT
24	ISSUE FOR PERMIT
25	ISSUE FOR PERMIT
26	ISSUE FOR PERMIT
27	ISSUE FOR PERMIT
28	ISSUE FOR PERMIT
29	ISSUE FOR PERMIT
30	ISSUE FOR PERMIT



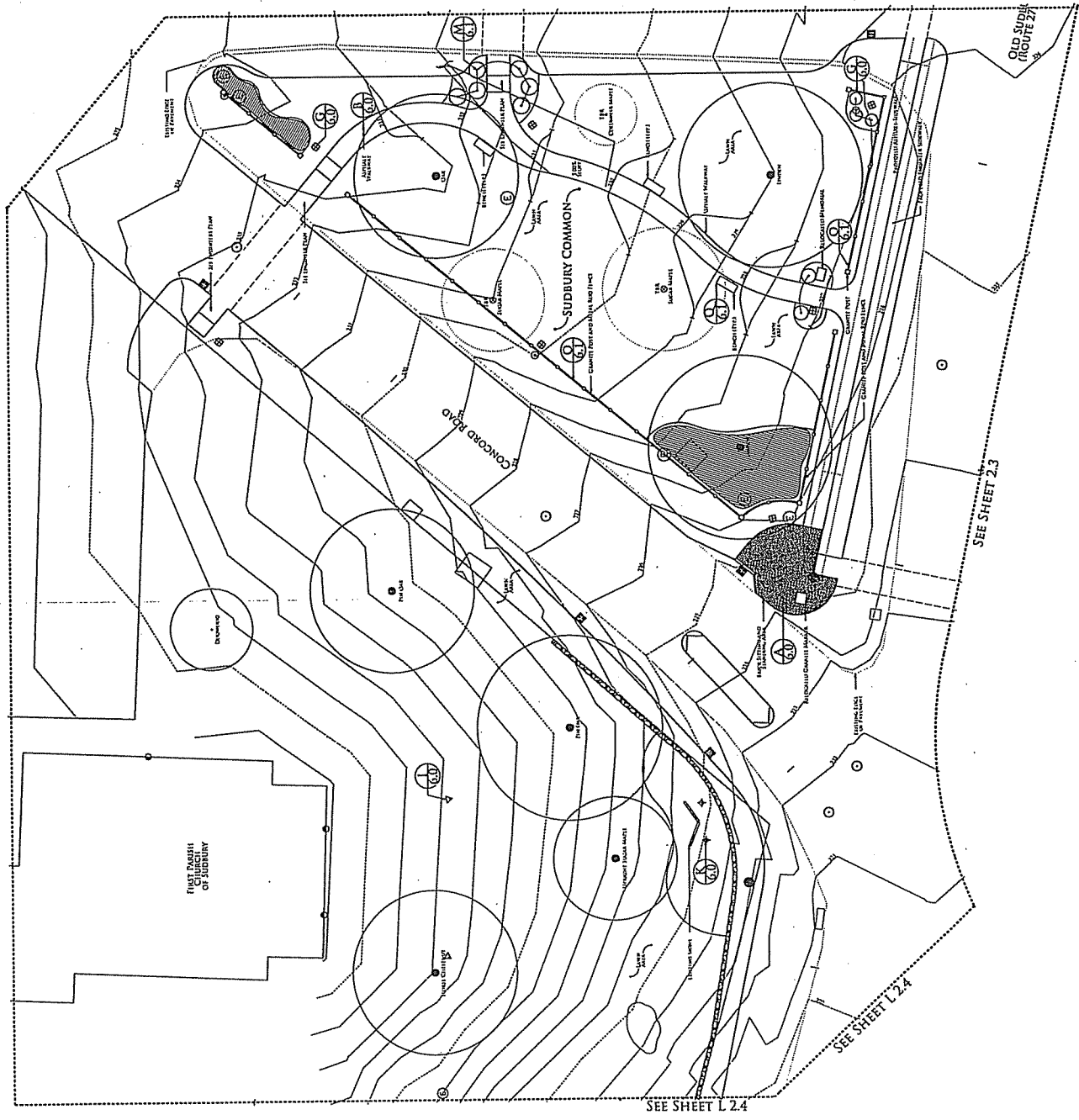
## TOWN COMMON AND FIRST PARISH AREA

ALL RIGHTS AND INTERESTS OF THE TOWN OF SUBBURY  
IN THIS MAP ARE RESERVED TO THE TOWN OF SUBBURY.  
FOR A FULL LIST OF CONDITIONS OF SALE AND TERMS OF SALE  
SEE THE RECORDS OF THE TOWN OF SUBBURY.

SCALE	1" = 10' - 0"
DATE	JULY 8, 2015
DRAWN BY	SW
CHECKED BY	AK

## SITE PLAN

# L 2.2



SUBURBY  
TOWN  
CENTER

**SUBURBY  
DESIGN GROUP**  
ARCHITECTS & PLANNERS  
1000 W. 10th Street, Suite 100  
Suburb, IL 60181

NO.	DESCRIPTION	DATE
1	PRELIMINARY	10/15/12
2	FINAL DESIGN	01/15/13
3	CONSTRUCTION	03/15/13
4	AS-BUILT	05/15/13
5	REVISION	07/15/13
6	REVISION	09/15/13
7	REVISION	11/15/13
8	REVISION	01/15/14
9	REVISION	03/15/14
10	REVISION	05/15/14
11	REVISION	07/15/14
12	REVISION	09/15/14
13	REVISION	11/15/14
14	REVISION	01/15/15
15	REVISION	03/15/15
16	REVISION	05/15/15
17	REVISION	07/15/15
18	REVISION	09/15/15
19	REVISION	11/15/15
20	REVISION	01/15/16
21	REVISION	03/15/16
22	REVISION	05/15/16
23	REVISION	07/15/16
24	REVISION	09/15/16
25	REVISION	11/15/16
26	REVISION	01/15/17
27	REVISION	03/15/17
28	REVISION	05/15/17
29	REVISION	07/15/17
30	REVISION	09/15/17
31	REVISION	11/15/17
32	REVISION	01/15/18
33	REVISION	03/15/18
34	REVISION	05/15/18
35	REVISION	07/15/18
36	REVISION	09/15/18
37	REVISION	11/15/18
38	REVISION	01/15/19
39	REVISION	03/15/19
40	REVISION	05/15/19
41	REVISION	07/15/19
42	REVISION	09/15/19
43	REVISION	11/15/19
44	REVISION	01/15/20
45	REVISION	03/15/20
46	REVISION	05/15/20
47	REVISION	07/15/20
48	REVISION	09/15/20
49	REVISION	11/15/20
50	REVISION	01/15/21
51	REVISION	03/15/21
52	REVISION	05/15/21
53	REVISION	07/15/21
54	REVISION	09/15/21
55	REVISION	11/15/21
56	REVISION	01/15/22
57	REVISION	03/15/22
58	REVISION	05/15/22
59	REVISION	07/15/22
60	REVISION	09/15/22
61	REVISION	11/15/22
62	REVISION	01/15/23
63	REVISION	03/15/23
64	REVISION	05/15/23
65	REVISION	07/15/23
66	REVISION	09/15/23
67	REVISION	11/15/23
68	REVISION	01/15/24
69	REVISION	03/15/24
70	REVISION	05/15/24
71	REVISION	07/15/24
72	REVISION	09/15/24
73	REVISION	11/15/24
74	REVISION	01/15/25
75	REVISION	03/15/25
76	REVISION	05/15/25
77	REVISION	07/15/25
78	REVISION	09/15/25
79	REVISION	11/15/25
80	REVISION	01/15/26
81	REVISION	03/15/26
82	REVISION	05/15/26
83	REVISION	07/15/26
84	REVISION	09/15/26
85	REVISION	11/15/26
86	REVISION	01/15/27
87	REVISION	03/15/27
88	REVISION	05/15/27
89	REVISION	07/15/27
90	REVISION	09/15/27
91	REVISION	11/15/27
92	REVISION	01/15/28
93	REVISION	03/15/28
94	REVISION	05/15/28
95	REVISION	07/15/28
96	REVISION	09/15/28
97	REVISION	11/15/28
98	REVISION	01/15/29
99	REVISION	03/15/29
100	REVISION	05/15/29

NO.	DESCRIPTION	DATE
1	PRELIMINARY	10/15/12
2	FINAL DESIGN	01/15/13
3	CONSTRUCTION	03/15/13
4	AS-BUILT	05/15/13
5	REVISION	07/15/13
6	REVISION	09/15/13
7	REVISION	11/15/13
8	REVISION	01/15/14
9	REVISION	03/15/14
10	REVISION	05/15/14
11	REVISION	07/15/14
12	REVISION	09/15/14
13	REVISION	11/15/14
14	REVISION	01/15/15
15	REVISION	03/15/15
16	REVISION	05/15/15
17	REVISION	07/15/15
18	REVISION	09/15/15
19	REVISION	11/15/15
20	REVISION	01/15/16
21	REVISION	03/15/16
22	REVISION	05/15/16
23	REVISION	07/15/16
24	REVISION	09/15/16
25	REVISION	11/15/16
26	REVISION	01/15/17
27	REVISION	03/15/17
28	REVISION	05/15/17
29	REVISION	07/15/17
30	REVISION	09/15/17
31	REVISION	11/15/17
32	REVISION	01/15/18
33	REVISION	03/15/18
34	REVISION	05/15/18
35	REVISION	07/15/18
36	REVISION	09/15/18
37	REVISION	11/15/18
38	REVISION	01/15/19
39	REVISION	03/15/19
40	REVISION	05/15/19
41	REVISION	07/15/19
42	REVISION	09/15/19
43	REVISION	11/15/19
44	REVISION	01/15/20
45	REVISION	03/15/20
46	REVISION	05/15/20
47	REVISION	07/15/20
48	REVISION	09/15/20
49	REVISION	11/15/20
50	REVISION	01/15/21
51	REVISION	03/15/21
52	REVISION	05/15/21
53	REVISION	07/15/21
54	REVISION	09/15/21
55	REVISION	11/15/21
56	REVISION	01/15/22
57	REVISION	03/15/22
58	REVISION	05/15/22
59	REVISION	07/15/22
60	REVISION	09/15/22
61	REVISION	11/15/22
62	REVISION	01/15/23
63	REVISION	03/15/23
64	REVISION	05/15/23
65	REVISION	07/15/23
66	REVISION	09/15/23
67	REVISION	11/15/23
68	REVISION	01/15/24
69	REVISION	03/15/24
70	REVISION	05/15/24
71	REVISION	07/15/24
72	REVISION	09/15/24
73	REVISION	11/15/24
74	REVISION	01/15/25
75	REVISION	03/15/25
76	REVISION	05/15/25
77	REVISION	07/15/25
78	REVISION	09/15/25
79	REVISION	11/15/25
80	REVISION	01/15/26
81	REVISION	03/15/26
82	REVISION	05/15/26
83	REVISION	07/15/26
84	REVISION	09/15/26
85	REVISION	11/15/26
86	REVISION	01/15/27
87	REVISION	03/15/27
88	REVISION	05/15/27
89	REVISION	07/15/27
90	REVISION	09/15/27
91	REVISION	11/15/27
92	REVISION	01/15/28
93	REVISION	03/15/28
94	REVISION	05/15/28
95	REVISION	07/15/28
96	REVISION	09/15/28
97	REVISION	11/15/28
98	REVISION	01/15/29
99	REVISION	03/15/29
100	REVISION	05/15/29



GRINNELL PARK  
AND WAR  
MEMORIAL  
AREA

ALL DIMENSIONS SHOWN ON THIS PLAN ARE TO BE CONSIDERED AS APPROXIMATE. THE CONTRACTOR SHALL BE RESPONSIBLE FOR VERIFYING ALL DIMENSIONS AND LOCATIONS OF UTILITIES AND STRUCTURES PRIOR TO CONSTRUCTION.

SCALE: 1" = 10' - 0"  
DATE: 10/15/2015  
DRAWN BY: RW  
CHECKED BY: MC

SITE  
PLAN

L  
2.4

