

Environmental Monitor Construction Site Inspection Report MassDOT Project #608164 Construction Contract # 119678 EM Report #61						
Project Description: Bruce Freeman Rail Trail Right-of-Way Permit Description(s): Order of Conditions (MGL Chapter 131, Section 40 and 310 CMR 10.00, Mass DEP File No. 301-1362); 2022 EPA NPDES General Permit for Discharges from Construction Areas; U.S. Army Corps of Engineers Permit No NAE-2021-01975.						
I. General Project Information						
Project Name:	Bruce Freeman Rail Trail - Phase 2d - Sudbury					
Date of Inspections:	7/1/2025					
Bi Weekly/ Monthly Period Covered:	July Inspection					
Inspector's Name(s):	Anna Haznar					
Inspectors' Contact Information:	ahaznar@beta-inc.com					
II. Weather Information						
	Inspection #1	Inspection #2	Inspection #3	Inspection #4	Inspection #5	Inspection #6
WeatherUnderground	Inspector: Anna Haznar 7/1/2025	Inspector:	Inspector:	Inspector:	Inspector:	Inspector:
Type of Inspection (i.e. non-storm event, pre-storm event, during-storm event or post-storm event):	Non-storm					
Number of days since last rain event greater than .25"						
Has there been a storm event since the last inspection?	Yes					
If yes, please provide storm start date, storm duration, and approx amount of precipitation:						
Storm 1:	June 7th (4 hours 1.80")					
Storm 2:						
Storm 3:						
Storm 4:						
Weather at the time of inspection (i.e. clear, overcast, cloudy, rain, sleet, fog, snow, windy):	Clear					
Temperature:	82					
Unusual Conditions (drought, severe storm):						
Have any discharges occurred since the last inspection report?	Yes					
If yes, please describe:	Further scour erosion was observed adjacent to the culvert at Station 217+00					
Note: Inspections should only be conducted on days during work hours while RE or ARE is onsite. The EM should contact the RE to address any immediate corrective actions. Note: Inspections are now occurring on a monthly basis as approved by the Conservation Agent via email on June 12, 2025 due to the substantial completeness of the work at the site.						

III. General Description of Construction Status		
7/1/2025 - At the time of the Site visit, no work was occurring.		
IV. Status of Existing BMPs		
Control Measure (These are examples; list measures specific to the project)	Cleaning or Repair Needed (yes no n/a)	Comments/Recommendations from the EM
Perimeter Controls	Yes	Perimeter erosion and sedimentation control measures were installed at the commencement of the Project and are in varying conditions across the Site; however, they were generally observed to be degraded. Perimeter controls were generally in degraded condition along culverts, streams, and cattle crossings. New perimeter controls were added on 6/27/2024 at Stations 310+00 through 311+00 as requested. New erosion controls have been installed between the path and the crushed stone shoulders at Station 216+00 to 217+50. Areas that still require stabilization do not appear to be at risk for erosion due to surrounding vegetation upgradient of Resource Areas, with the exception of the slopes along the stream at Station 215+00 to 217+00. Vegetation has begun stabilization the slope along the stream at Station 215+00 to 216+50; however, these areas are not considered fully stabilized. The approved seed mix should be applied to these slopes to achieve full stabilization.
Inlet Protection Measures	No	
Stabilized Construction Entrances	No	
Stockpile Protections	No	
Dust Control	No	
Street Sweeping	Yes	Crushed stone was observed on the path throughout the Project in varying volumes.
Dewatering Controls	No	
Construction Equipment and Material Storage	No	
Construction and Domestic Waste Storage and Collection	No	
Location of Sanitary Waste Facilities	No	
Washout Areas	No	
Fertilizers, Herbicides, and Landscape	N/A	
Stabilization of Exposed Soil	Yes	Varying degrees of stabilization are present within areas that were constructed/graded as part of the Project. Seed has been applied to multiple locations of exposed soil throughout the path; however, predominately non-native vegetation has become established. Erosion control blankets have been installed on the slope near Station 165+00 to 167+00 and Station 217+45. Loam that was applied to the streambank at Station 216+50 to 217+00 requires further stabilization. Vegetation has begun stabilization the slope along the stream at Station 215+00 to 216+50; however, these areas are not considered fully stabilized. The approved seed mix should be applied to these slopes to achieve full stabilization.
Overall Adherence to Environmental Permits	Yes	As noted in Action Items 41 and 42, it appears that work has been conducted beyond the limits of work approved under the Order of Conditions. These areas will require coordination amongst the Project Team to confirm if any restoration is required. A Site walk was conducted with BETA staff, MassDOT staff and the Conservation Agent on 11/19/2024 to discuss potential resolutions for compliance issues. In addition, invasive species requiring management still persist throughout the entirety of the corridor.
Note: Use station numbers, wetland ID or other means to determine locations of BMP's that need repairs.		

V. Compliance Table - Compliance Action Items					
V. 1. Compliance Action Items Observed During the One Month Reporting Period Ending July 31, 2025.					
<p>Current Open and Closed Compliance Action Items Observed During the Reporting Period Ending July 31, 2025. For those items within the most current two week period, color the Item in blue, as shown on lines 48-50 as an example. RED text indicates that the item is outstanding. Once item is resolved, place resolution date in 'Recommended Resolution/Resolution Date' column, convert to BLACK text, and move to the bottom of the Action Item list. Place resolution date on TOP of resolution action. Each Compliance Action Item is assigned a unique number only to be used to reference that item for the duration of the project. Separate but related Action Items will be labeled in an "Item Number-1 and Item Number-2" manner or similar. Completed action items can be removed once they have appeared in the Bi-Weekly Report to MassDEP</p> <p>"<u>Urgent</u>" - Needs to be completed immediately, "<u>High</u>" - Needs to be completed in < 7 days due to site conditions, proximity to resource areas, anticipated weather, etc., "<u>Medium</u>" - Needs to be completed within 7 days and has short-term potential to impact resource areas, "<u>Low</u>" - Needs to be completed within 7 days with minimal potential to impact resource areas</p>					
Item	Location/ Description	Observation Date	Resolution Due Date	Recommended Resolution / Resolution Date	Comments/Updates
62	Loam and seed was applied to the streambank at Station 215+00 to 217+00 and requires further stabilization Priority: High	11/25/2024	12/2/2024	An erosion control blanket should be installed along this slope.	<p>4/2/2025 - Observation remains. Loam was observed to have eroded and discharged into the stream at Station 215+75. Rill erosion was also observed on the streambank at Station 216+25.</p> <p>4/7/2025 - Observation remains. Stone has been installed around the culvert at Station 215+75 to stabilize the Bank. No further discharge in this location was observed; however stabilization still required.</p> <p>4/14/2025 - Observation remains. Some vegetative growth was observed along the Bank of the stream at Station 216+25; however, the area is not considered stabilized. Hydroseed should be applied to the exposed soil.</p> <p>4/21/2025 - Observation remains. No further vegetative growth was observed along the Bank of the stream. Hydroseed should be applied to the exposed soil.</p> <p>4/28/2025 - Observation remains.</p> <p>5/5/2025 - Observation remains. Vegetation has begun stabilization the slope along the stream at Station 215+00 to 216+50; however, these areas are not considered fully stabilized and will continue to be monitored to determine if further stabilization is required. The slope at Station 216+50 to 217+00 currently requires further stabilization as minimal vegetation has germinated on this slope.</p> <p>5/12/2025 - Observation remains. Vegetation has partially stabilized the slope at Station 215+00 to 217+00; however further application of seed is required.</p> <p>5/16/2025 - Observation remains. See previous update.</p> <p>5/23/2025 - Observation remains. Scour erosion as a result of heavy rainfall was observed directly adjacent to the culverts at Station 216+00 and 217+00. Further seed should be applied to the slopes adjacent to the stream to provide stabilization./</p> <p>5/29/2025 - Observation remains. The slopes from Station 215+50 to Station 216+50 have become partially stabilized due to vegetative growth and the slope at Station 217+00 has minimal vegetative cover. Seed should be applied to these slopes to achieve full stabilization. The seed mix used for stabilization should be submitted to the Conservation Commission.</p> <p>6/6/2025 - Observation remains. See previous update. Plantings were installed along the Bank and the path at Station 216+00 to Station 216+50. Garlic mustard was observed along the slope at Station 216+25, observations regarding invasive species will be addressed in Long Term Compliance Action Item 61.</p> <p>6/9/2025 - Observation remains. See previous update. Further hydroseed should be applied to the Banks so full stabilization can be achieved.</p> <p>7/1/2025 - Observation remains. For readability, observations from 12/2/2024 to 2/11/2025 have been removed - see report #60 for previous observations. These slopes were observed to be partially stabilized; however, some of the vegetation observed includes garlic mustard and Japanese hops that require removal. Further scour erosion that appears to have caused sediment and stone to discharge into the stream was observed adjacent to the culvert at Station 217+00.</p>

53	<p>Stone was observed requiring removal from the swale on the east side of the trail at Station 172+00 to 173+00</p> <p>Priority: High</p>	7/29/2024	8/6/2024	Remove stone from the swale.	<p>11/12/2024 - Leaf litter has completely covered the stone in this location. The Contractor should indicate if stone has been removed from this location.</p> <p>11/19/2024 - See previous update.</p> <p>11/22/2024 - Observation remains. Stone is still present within the swale and requires removal. Leaf litter is currently covering a majority of the stone.</p> <p>11/25/2024 - Observation remains. Leaf litter is covering a majority of the stone.</p> <p>12/2/2024 - Observation remains. Stone is present within the swale under leaf litter.</p> <p>12/6/2024 - Observation remains. See previous update.</p> <p>12/12/2024 - Observation remains. Stone is present within the swale under the leaf litter.</p> <p>12/20/2024 - Observation remains. Stone is present within the swale under the leaf litter.</p> <p>12/26/2024 - Observation remains. Stone is present within the swale under the leaf litter and snow.</p> <p>12/31/2024 - Observation remains. Stone is present within the swale under the leaf litter.</p> <p>1/2/2025 - Observation remains. Stone is present within the swale under the leaf litter.</p> <p>1/9/2025 - Observation remains. Stone is present within the swale under the leaf litter.</p> <p>1/15/2025 - Observation remains. Further stone has discharged into the swale at this location, and stone is still present under leaf litter.</p> <p>1/23/2025 - Observation remains. Stone is present within the swale under the leaf litter and snow.</p> <p>1/30/2025 - Observation remains. Stone is present within the swale under the leaf litter and snow. Trash was also observed within the swale in this area.</p> <p>2/4/2025 - Observation remains. Stone is present within the swale under the leaf litter and snow. Trash was also present within the swale in this area.</p> <p>2/11/2025 - Observation remains. Stone is present within the swale under the leaf litter and snow. Trash is present within the swale in this area.</p> <p>4/2/2025 - Observation remains. Stone is present within the swale under the leaf litter.</p> <p>4/7/2025 - Observation remains. Stone is present within the swale under the leaf litter.</p> <p>4/14/2025 - Observation remains. Stone is present within the swale under the leaf litter.</p> <p>4/21/2025 - Observation remains. Stone is present within the swale under the leaf litter.</p> <p>4/28/2025 - Observation remains. Stone is present within the swale under the leaf litter.</p> <p>5/5/2025 - Observation remains. Stone is present within the swale under the leaf litter.</p> <p>5/12/2025 - Observation remains. Stone is present within the swale under the leaf litter.</p> <p>5/16/2025 - Observation remains. Stone is present within the swale under the leaf litter.</p> <p>5/23/2025 - Observation remains. Stone is present within the swale under the leaf litter.</p> <p>5/29/2025 - Observation remains. Stone is present within the swale under the leaf litter.</p> <p>6/6/2025 - Observation remains. Stone is present within the swale under the leaf litter.</p> <p>6/9/2025 - Observations remains. For readability, observations from 8/5/2024 to 11/4/2024 have been removed - see report #59 for observations. Organic material has fully covered the stone within the swale.</p> <p>7/1/2025 - Observation remains. Organic material has fully covered the stone within the swale.</p>
----	---------------------------------------------------------------------------------------------------------------------------------------------------	-----------	----------	------------------------------	-------------------------------------------------------------------------------------------------------------------------------------------------------------------------------------------------------------------------------------------------------------------------------------------------------------------------------------------------------------------------------------------------------------------------------------------------------------------------------------------------------------------------------------------------------------------------------------------------------------------------------------------------------------------------------------------------------------------------------------------------------------------------------------------------------------------------------------------------------------------------------------------------------------------------------------------------------------------------------------------------------------------------------------------------------------------------------------------------------------------------------------------------------------------------------------------------------------------------------------------------------------------------------------------------------------------------------------------------------------------------------------------------------------------------------------------------------------------------------------------------------------------------------------------------------------------------------------------------------------------------------------------------------------------------------------------------------------------------------------------------------------------------------------------------------------------------------------------------------------------------------------------------------------------------------------------------------------------------------------------------------------------------------------------------------------------------------------------------------------------------------------------------------------------------------------------------------------------------------------------------------------------------------------------------------------------------------------------------------------------------------------------------------------------------------------------------------------------------------------------------------------------------------------------------------------------------------------------------------------------------------------------------------------------------------------------------------------------------------------------------------------------------------------------------------------------------------------------------------------------------------------------------------------------------------------------------------------------------------------------------------------------------------------------------------------------------------------------------------------------------------------------------------------------------------------------------------------------------------------------------------------------------------------------------------------------------------------------------------------------------------------------------------------------------------------------

47	<p>Slope stabilization required due to condition of compost filter tubes at Stations 265+50 and 273+00</p> <p>Priority: High</p>	6/7/2024	6/14/2024	<p>Stabilize the slope with the approved seed mixture and provide interim stabilization such as straw mulch.</p>	<p>4/2/2025 - Observation remains. Vegetative stabilization has been achieved in some areas; however, the northwestern Bank of Pantry Brook has been hydroseeded but stabilization has not been achieved. The Bank will continue to be monitored to determine if more seed is required.</p> <p>4/7/2025 - Observation remains. Exposed soil is present within this area both on the Bank of Pantry Brook and throughout the trail. Areas where hydroseed was applied will be monitored to determine if more seed is required.</p> <p>4/14/2025 - Observation remains. See previous update.</p> <p>4/21/2025 - Observation remains. Vegetative growth has been observed in some locations where hydroseed was applied; however, these areas are not considered stabilized. Further application of hydroseed is required and areas where hydroseed was applied will be monitored to determine if more seed is required.</p> <p>4/28/2025 - Observation remains. See previous update.</p> <p>5/5/2025 - Observation remains. See update from 4/7/2025 and 4/21/2025.</p> <p>5/12/2025 - Observation remains. See update from 4/7/2025 and 4/21/2025.</p> <p>5/16/2025 - Observation remains. Application of seed is required on multiple areas of exposed soil along this section of the trail. See update from 4/7/2025 and 4/21/2025.</p> <p>5/23/2025 - Observation remains. Application of seed is required on multiple areas of exposed soil along this section of the trail. See update from 4/7/2025 and 4/21/2025.</p> <p>5/29/2025 - Observation remains. Application of seed is required on multiple areas of exposed soil along this section of the trail. See update from 4/7/2025 and 4/21/2025.</p> <p>6/6/2025 - Observation remains. Application of seed is required on multiple areas of exposed soil along this section of the trail. See update from 4/7/2025 and 4/21/2025.</p> <p>6/9/2025 - Observation remains. Observations from 6/19/2024 to 2/11/2025 have been removed for readability - see report #59 for previous observations. Areas of exposed soil are present within this area of the trail. Before hydroseed is applied leaf litter should be removed to ensure soil to seed contact. The seed mix used should be submitted to the Conservation Commission.</p> <p>7/1/2025 - Observation remains. See previous update.</p>
43	<p>Overtopped compost filter tubes and exposed soils beyond the limits of work at Station 105+00</p> <p>Priority: High</p>	6/7/2024	6/14/2024	<p>Stabilize the area with the approved seed mixture and provide interim stabilization such as straw mulch.</p>	<p>5/5/2025 - Observation remains. Exposed soil past the limits of work is present and requires further stabilization.</p> <p>5/12/2025 - Observation remains. See previous update.</p> <p>5/16/2025 - Observation remains. Exposed soil past the limits of work is present and requires further stabilization.</p> <p>5/23/2025 - Observation remains. See previous update.</p> <p>5/29/2025 - Observation remains. Exposed soil past the limits of work is present and requires further stabilization.</p> <p>6/6/2025 - Observation remains. See previous update.</p> <p>6/9/2025 - Observation remains. Exposed soil past the limits of work is present and requires further stabilization.</p> <p>7/1/2025 - Observation remains. For readability, observations from 6/14/2024 to 4/28/2025 have been removed - see report #60 for previous observations. Exposed soil past the limits of work is present and requires further stabilization.</p>

V.2. On Going (Longer-Term) Compliance Items					
Typically, these items require coordination with MassDEP. If so, remove once approval is obtained from MassDEP					
Item	Location/ Description	Observation Date	Resolution Due Date	Recommended/Discussed Resolution	Comments/Updates
61	Invasive/ non-native vegetation including Japanese knotweed (<i>Reynoutria japonica</i>), bittersweet (<i>Celastrus orbiculatus</i>), bush honeysuckle (<i>Lonicera spp.</i>), burning bush (<i>Euonymus alatus</i>), purple loosestrife (<i>Lythrum salicaria</i>), glossy buckthorn (<i>Frangula alnus</i>) multiflora rose (<i>Rosa multiflora</i>), lesser celandine (<i>Ficaria verna</i>), barberry (<i>Berberis thunbergii</i>), and garlic mustard (<i>Alliaria petiolata</i>) have been observed throughout the path. Priority: High	10/22/2024	10/29/2024	Invasive Species should be removed by manual and/or chemical removal methods	<p>10/29/2024 - Invasive species are present throughout the trail both within upland and Resource Areas. Populations of glossy buckthorn and purple loosestrife are present within the wetland replication area.</p> <p>11/5/2024 - Observation remains. See update from 10/29/2024.</p> <p>11/12/2024 - Observation remains. Invasive species are still present throughout the trail. Some invasives have been observed with no leaves due to winter die back.</p> <p>11/19/2024 - Observation remains. Further invasive species management will be required during the next growing season.</p> <p>4/2/2025 - Observation remains. Invasive species including, bush honeysuckle, multiflora rose, garlic mustard and buckthorn were observed to be developing buds and leaves throughout the site. In addition, non-invasives but non-native species have been observed along the corridor within areas where the establishment of native species is required.</p> <p>4/7/2025 - Observation remains. See previous update.</p> <p>4/14/2025 - Observation remains. Invasive/non-native species are present throughout the trail.</p> <p>4/21/2025 - Observation remains. Lesser celandine (<i>Ficaria verna</i>) was observed along the trail at Station 312+00. Garlic mustard is present throughout the trail in locations on exposed soil. Invasive species including bittersweet, bush honeysuckle, burning bush, multiflora rose and glossy buckthorn are also present throughout the trail.</p> <p>4/28/2025 - Observation remains. See previous update.</p> <p>5/5/2025 - Observation remains. Multiple Japanese knotweed sprouts have been observed throughout the trail, garlic mustard was observed as flowering, one black locust (<i>Robinia pseudoacacia</i>) sapling was observed along the trail, and other previously listed invasive species have fully leafed out. Management for invasive species should occur prior to the setting of seed to ensure further spread does not occur.</p> <p>5/12/2025 - Observation remains. Invasive species have been observed throughout the path. Japanese knotweed sprouts have germinated in multiple locations, garlic mustard has begun going to seed, bush honeysuckle was observed as being in flower and other invasive species have fully leafed out. Management for invasive species should occur prior to the setting of seed to ensure further spread does not occur.</p> <p>5/16/2025 - Observation remains. Invasive species have been observed throughout the path. See previous update.</p> <p>5/23/2025 - Observation remains. Invasive species are present throughout the path. Garlic mustard was observed as going to seed, Japanese knotweed and buckthorn are present in multiple areas throughout the trail, bush honeysuckle and bittersweet were observed to be in flower, and burning bush was observed. Invasive species should be removed prior to the setting of seed to ensure further spread does not occur.</p> <p>5/29/2025 - Observation remains. See previous update.</p> <p>6/6/2025 - Observation remains. Invasive species treatment occurred on June 2, 2025, evidence of treatment on some species along the trail was observed; however, evidence of treatment was not observed on all plants. Invasive species will continue to be monitored to evaluate the success of the treatment.</p> <p>6/9/2025 - Observation remains. No further evidence of treatment has been observed on invasive species throughout the trail. Invasive species including Japanese knotweed, bush honeysuckle, barberry, black locust, multiflora rose, buckthorn, garlic mustard, and burning bush have all been observed to look healthy along the trail.</p> <p>7/1/2025 - Observation remains. For readability, observations from 11/22/2024 to 2/11/2025 have been removed - see report #60 for previous observations. Invasive species in healthy conditions have been observed throughout the trail including Japanese knotweed, bush honeysuckle, barberry, bittersweet, black locust, multiflora rose, buckthorn, garlic mustard, and burning bush.</p>

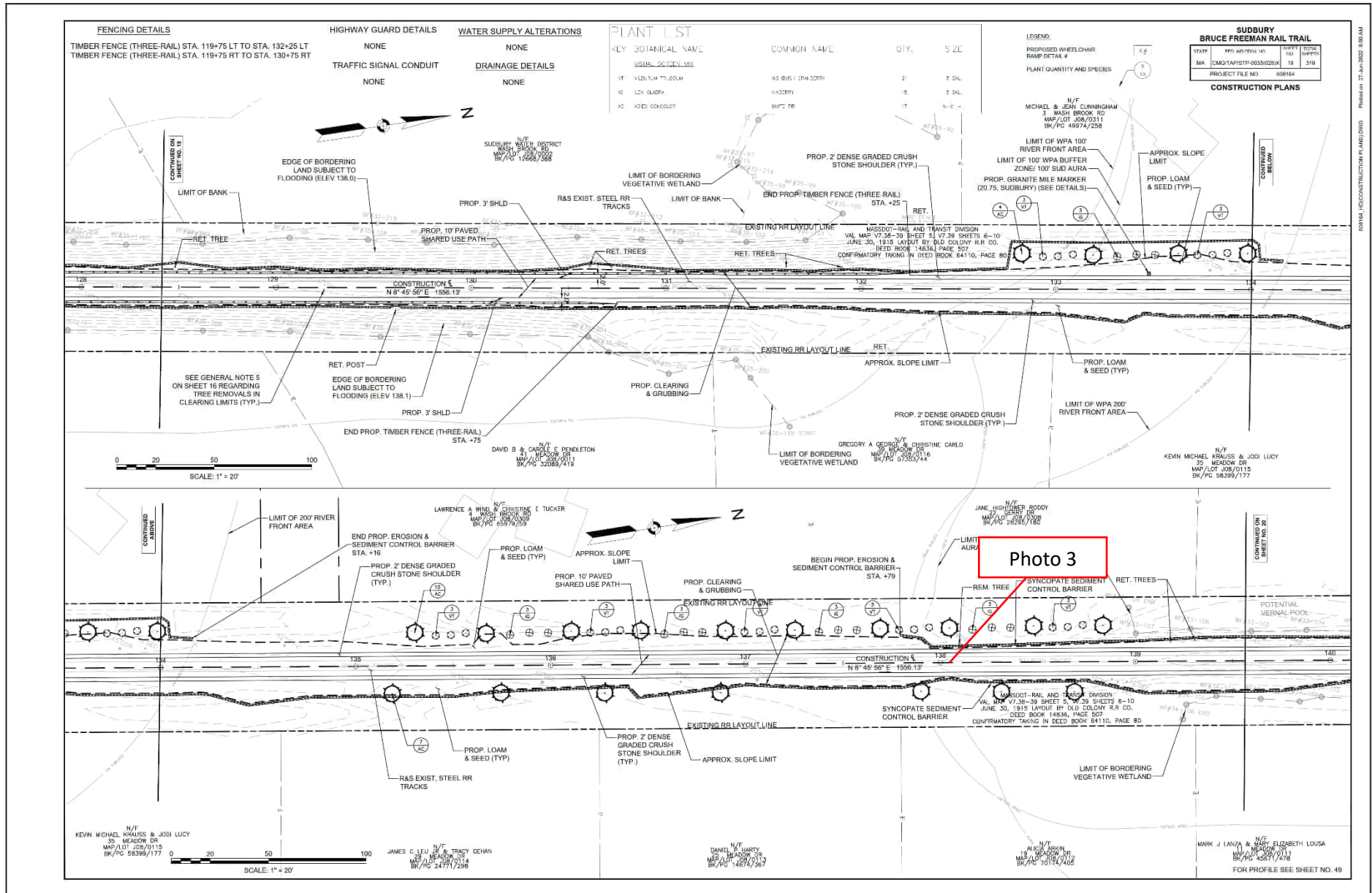
57-1	Japanese hops (<i>Humulus japonicus</i>) has been observed throughout the Project and requires removal Priority: High	10/22/2024	10/29/2024	The Contractor should manage remaining Japanese hops by hand pulling and the application of herbicide.	<p>10/22/2024 - This Action Item has been reopened due to observations of both dead and living Japanese hops in select locations along the Project. BETA and MassDOT will coordinate further with the Sudbury Conservation Agent to clarify the extents of remaining living vegetation as removal efforts progress.</p> <p>10/29/2024 - Plants that were observed as alive along Route 117 during the last inspection were observed to be wilting due to winter die back.</p> <p>4/14/2025 - Japanese hops were observed within Parkinsons Field and require removal.</p> <p>4/21/2025 - Japanese hops were observed within Parkinsons Field and require removal. Japanese hops have not been observed in other locations throughout the trail.</p> <p>4/28/2025 - Observation remains. See previous update.</p> <p>5/5/2025 - Observation remains. Japanese hops have been observed in multiple locations throughout the trail. Management should occur prior to the setting of seed to ensure further spread does not occur.</p> <p>5/12/2025 - Observation remains. See previous update.</p> <p>5/16/2025 - Observation remains. Japanese hops have been observed throughout the trail in both vegetated areas and areas of exposed soils. Management should occur prior to the setting of seed to ensure further spread does not occur.</p> <p>5/23/2025 - Observation remains. See previous update.</p> <p>5/29/2025 - Observation remains. For readability, observations from 11/5/2024 to 4/7/2025 have been removed. Japanese hops have been observed throughout the trail in both vegetated areas and areas of exposed soils. Management should occur prior to the setting of seed to ensure further spread does not occur.</p> <p>6/6/2025 - Observation remains. Treatment occurred on some plants throughout the trail; however, evidence of treatment was not observed on all plants. Japanese hops will continue to be monitored to evaluate the success of the treatment.</p> <p>6/9/2025 - Observation remains. No further evidence of treatment has been observed on Japanese hops throughout the trail. Multiple populations were observed both in areas of exposed soil and in vegetated areas. Vines were also observed within plantings.</p> <p>7/1/2025 - Observation remains. Japanese hops are present throughout the trail and were observed within areas of minimal vegetation and within plantings.</p>
59	Multiple locations of exposed soils along the Project corridor require stabilization Priority: High	9/3/2024	9/10/2024	The contractor should apply the approved seed mixture to areas of exposed soils and place straw.	<p>4/21/2025 - For readability all previous observations have been removed from the report. Please reference the report from 4/14/2025 to see past observations. Observation remains. Vegetation has begun sprouting in some areas that were hydroseeded; however, most areas are not considered fully stabilized. Multiple areas of exposed soil along the trail still require the application of hydroseed. The seed mix used for stabilization should be submitted to the Conservation Commission.</p> <p>4/28/2025 - Observation remains. See previous update.</p> <p>5/5/2025 - Observation remains. Areas where hydroseed was applied have been observed as being partially or fully stabilized. Areas of exposed soil are still present in multiple locations throughout the trail. Further application of hydroseed should occur. The seed mix used for stabilization should be submitted to the Conservation Commission.</p> <p>5/12/2025 - Observation remains. See previous update.</p> <p>5/16/2025 - Observation remains. Areas of exposed soil are present in multiple locations throughout the trail. Further application of hydroseed should occur. The seed mix used for stabilization should be submitted to the Conservation Commission.</p> <p>5/23/2025 - Observation remains. See previous update.</p> <p>5/29/2025 - Observation remains. See update for 5/16/2025.</p> <p>6/6/2025 - Observation remains. Further application of hydroseed is required on areas of exposed soils and on areas of sparse vegetation throughout the trail. When hydroseed is applied, leaf litter should be removed to ensure soil to seed contact occurs.</p> <p>6/9/2025 - Observation remains. See previous update.</p> <p>7/1/2025 - Observation remains. Further application of hydroseed is required on areas of exposed soils and on areas of sparse vegetation throughout the trail. When hydroseed is applied, leaf litter should be removed to ensure soil to seed contact occurs</p>

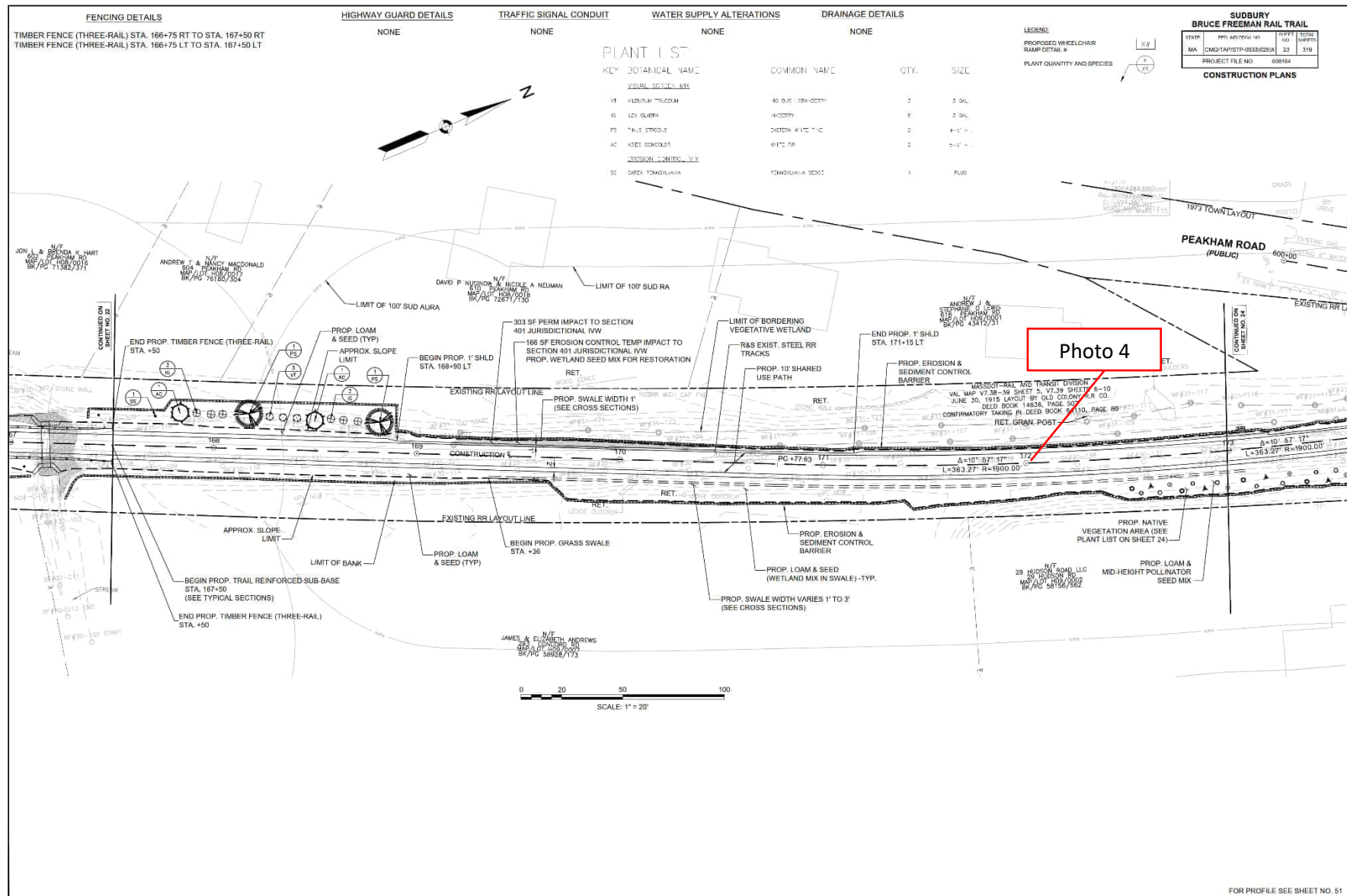
58	Crushed stone used for the dense graded crush stone shoulders has been observed as migrating both onto the path, off the sides of the path, and into the adjacent Resource Areas throughout the Project Priority: High	8/7/2024	8/14/2024	Remove all crushed stone from Resource Areas and develop a plan to cease discharges of stone.	<p>4/21/2025 - For readability all previous observations have been removed from the report. Please reference the report from 4/14/2025 to see past observations. Observation remains. Crushed stone was observed both on and off the trail in multiple locations.</p> <p>4/28/2025 - Observation remains. See previous update.</p> <p>5/5/2025 - Observation remains. See update from 4/21/2025.</p> <p>5/12/2025 - Observation remains. See update from 4/21/2025.</p> <p>5/16/2025 - Observation remains. Crushed stone is present both on and on the side of the trail in multiple locations.</p> <p>5/23/2025 - Observation remains. See previous update.</p> <p>5/29/2025 - Observation remains. Crushed stone is present both on and on the side of the trail in multiple locations.</p> <p>6/6/2025 - Observation remains. See previous update.</p> <p>6/9/2025 - Observation remains. Crushed stone is present both on and on the side of the trail in multiple locations.</p> <p>7/1/2025 - Observation remains. Crushed stone is present both on and on the side of the trail in multiple locations.</p>
42	Riprap slope extends beyond limits of work along the WF1 Series wetland near flags 103 to 107 Priority: High	5/28/2024	6/4/2024	The Contractor should confirm if this work was permitted by the Conservation Commission, as it does not appear to be a part of the approved plans/impacts. MassDOT should be consulted on next steps regarding notification and potential restoration.	<p>5/31/2024 - Observation remains.</p> <p>6/7/2024 - Observation remains.</p> <p>6/14/2024 - Riprap slope has been altered and active construction is repairing the area.</p> <p>6/17/2024 - During this inspection, additional work in support of the repair/potential replacement of an underlying pipe has been ongoing. It is recommended that the contractor confirm that they have coordinated with the Conservation Commission for this work and provide a restoration plan for the area once work is complete.</p> <p>6/24/2024 - During this inspection, BETA was informed that the existing cast iron pipe was replaced with a new concrete 12-inch reinforced concrete pipe. It appears that riprap was replaced along the side slopes to mirror conditions observed prior to this inspection.</p> <p>6/27/2024 - During this inspection, the area was observed to have been rolled and prepared for paving. Hydroseed was applied and plantings were installed.</p> <p>7/8/2024 - Germination was observed and the area will be monitored for stabilization. See previous updates regarding Conservation Commission coordination.</p> <p>7/15/2024 - This area could not be assessed due to paving operations ongoing during the inspection.</p> <p>7/22/2024 - See previous updates regarding Conservation Commission coordination.</p> <p>11/12/2024 - Observation remains. The timber fence has been installed upgradient of this area.</p> <p>11/19/2024 - Observation remains. As discussed with the Conservation Agent in the field, an as-built should be prepared for this area to quantify any additional impacts that may be addressed through a permit amendment.</p> <p>11/22/2024 - Observation remains. See previous update.</p> <p>11/25/2024 - Observation remains. See update from 11/19/2024.</p> <p>12/2/2024 - Observation remains. See update from 11/19/2024.</p> <p>12/6/2024 - Observation remains. See update from 11/19/2024.</p> <p>12/12/2024 - Observation remains. See update from 11/19/2024.</p> <p>12/20/2024 - Observation remains. See update from 11/19/2024.</p> <p>12/26/2024 - Observation remains. See update from 11/19/2024.</p> <p>12/31/2024 - Observation remains. See update from 11/19/2024.</p> <p>1/2/2025 - Observation remains. Leaf litter that was previously observed at the bottom of the slope has blown away and it appears that exposed soil with no observable germination is present.</p> <p>7/1/2025 - Observation remains. For readability, observations from 7/29/2024 to 11/5/2024 and from 1/9/2025 to 6/9/2025 have been removed - see report #60 for previous observations. See update from 1/2/2025 and 11/19/2024.</p>

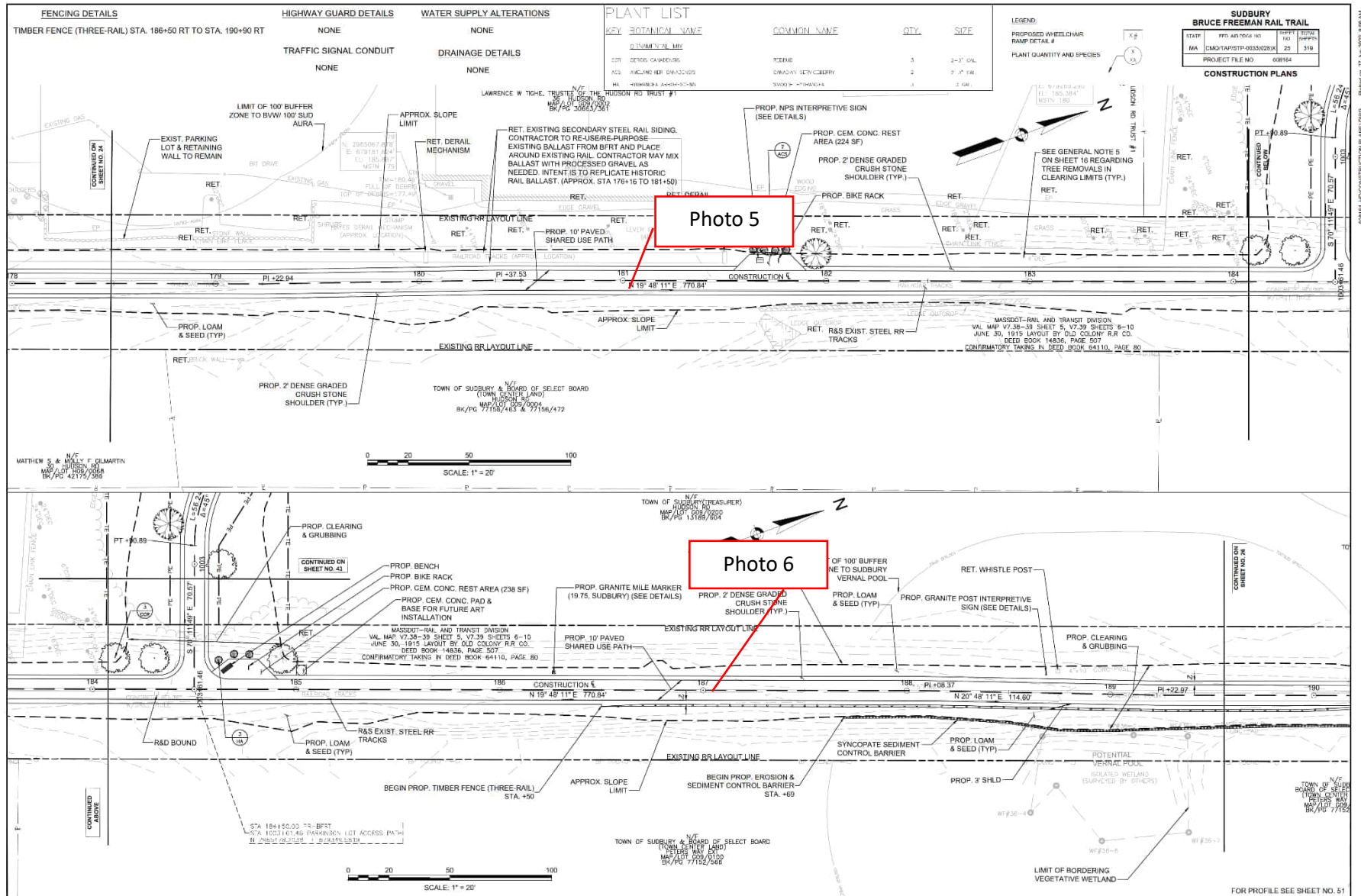
41	Stream Bank has been regraded beyond the limit of work at Station 216+00 Priority: High	5/28/2024	6/4/2024	The Contractor should confirm if this work was permitted by the Conservation Commission, as it does not appear to be a part of the approved plans/impacts. MassDOT should be consulted on next steps regarding notification and potential restoration.	5/31/2024 - Observation remains. 6/7/2024 - Observation remains. 6/14/2024 - Observation remains. 6/17/2024 - Observation remains. 6/24/2024 - Observation remains. 6/27/2024 - Observation remains. 7/8/2024 - Observation remains. 7/15/2024 - This area could not be assessed due to paving operations ongoing during the inspection. 7/22/2024 - Crushed stone and sediment continue to be discharged to the stream between Stations 215+00 and 217+00 due to overtopped and undermined compost filter tubes. 7/29/2024 - Observation remains. 8/5/2024 - Observation remains. 8/7/2024 - Observation remains. 8/12/2024 - Observation remains. Crushed stone is still present in the streambed at this location. 8/16/2024 - Observation remains. 8/20/2024 - Stone has been removed; however, additional alteration to Resource Areas beyond the limit of work continue. 8/27/2024 - Observation remains. 9/3/2024 - Observation remains. 9/10/2024 - Observation remains. Stone has been observed as discharging into the streambed in this location again. 9/16/2024 - Observation remains. 9/23/2024 - Observation remains. Stone is still present within the streambed at this location. 9/27/2024 - Observation remains. 10/4/2024 - Observation remains. 10/8/2024 - Observation remains. 10/15/2024 - Observation remains. Stone is still present within the streambed at this location. 10/22/2024 - Observation remains. Stone is still present within the streambed at this location. 10/29/2024 - Observation remains. Stone is still present within the streambed at this location. 11/5/2024 - Observation remains. The PVC pipe that was installed at this location was observed to be covered with stone and is no longer visible near Station 215+00. Stone is still present within the streambed at this location. 11/12/2024 - Observation remains. The streambed in this location is covered with leaf litter. See previous update. 11/19/2024 - Observation remains. As discussed with the Conservation Agent in the field, further coordination between the Town and MassDOT will be required to clean/repair the culvert, as the degraded condition of the culvert prompted the contractor to armor the stream banks. Further coordination will also be required for restoration of banks. 7/1/2025 - Observation remains. For readability, observations from 11/22/2025 to 6/9/2025 have been removed - see report #60 for previous observations. See update from 11/19/2024.
VI. Agency Submittals (Note: only filled out for monthly report)					
Submittal		Date Submitted	Description	Status	
VII. Attachments (#3 only attached with monthly report)					
1. Field Sketch					
2. Photographic Documentation					
3. 3 Week Look ahead schedule					

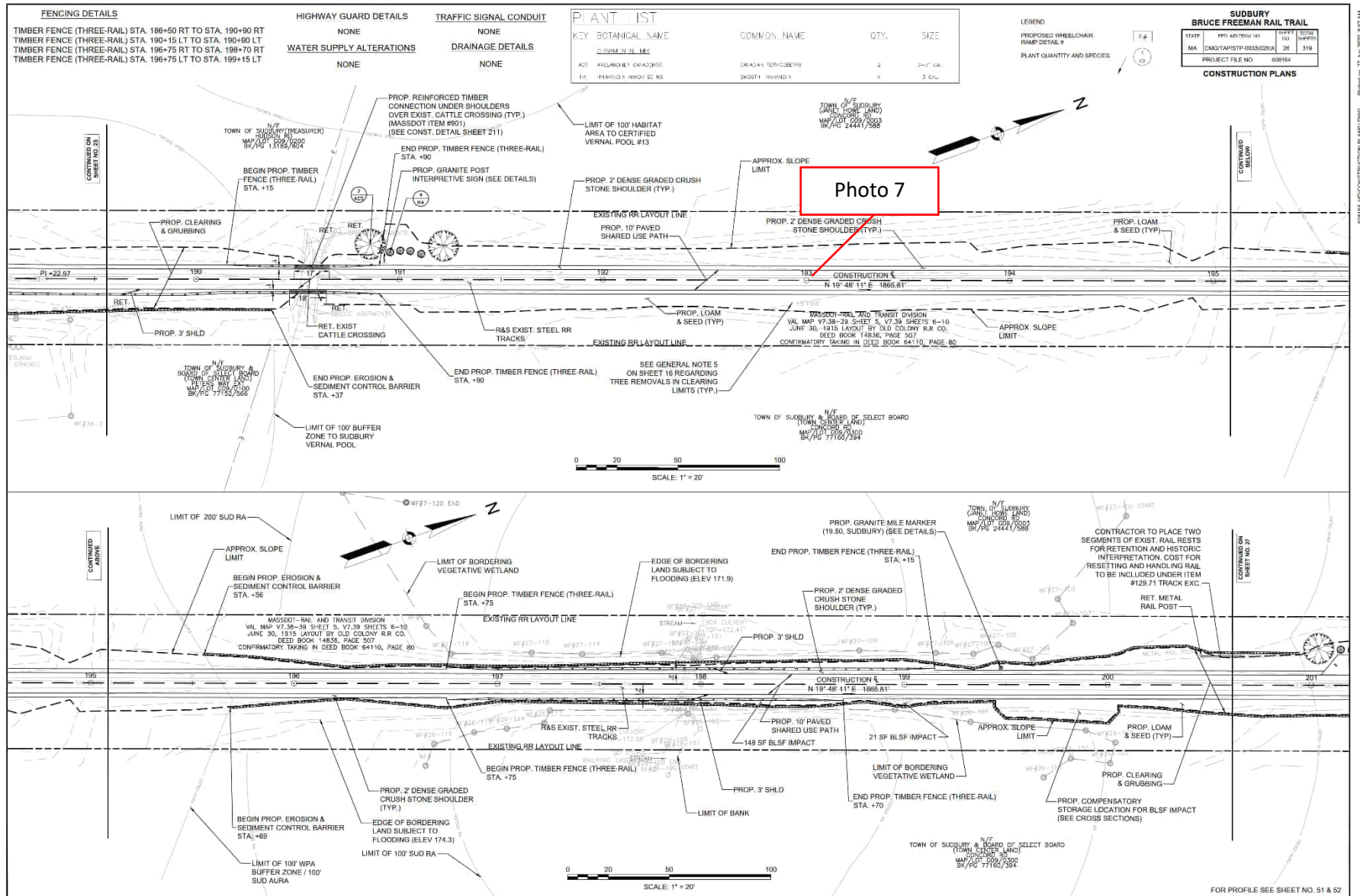


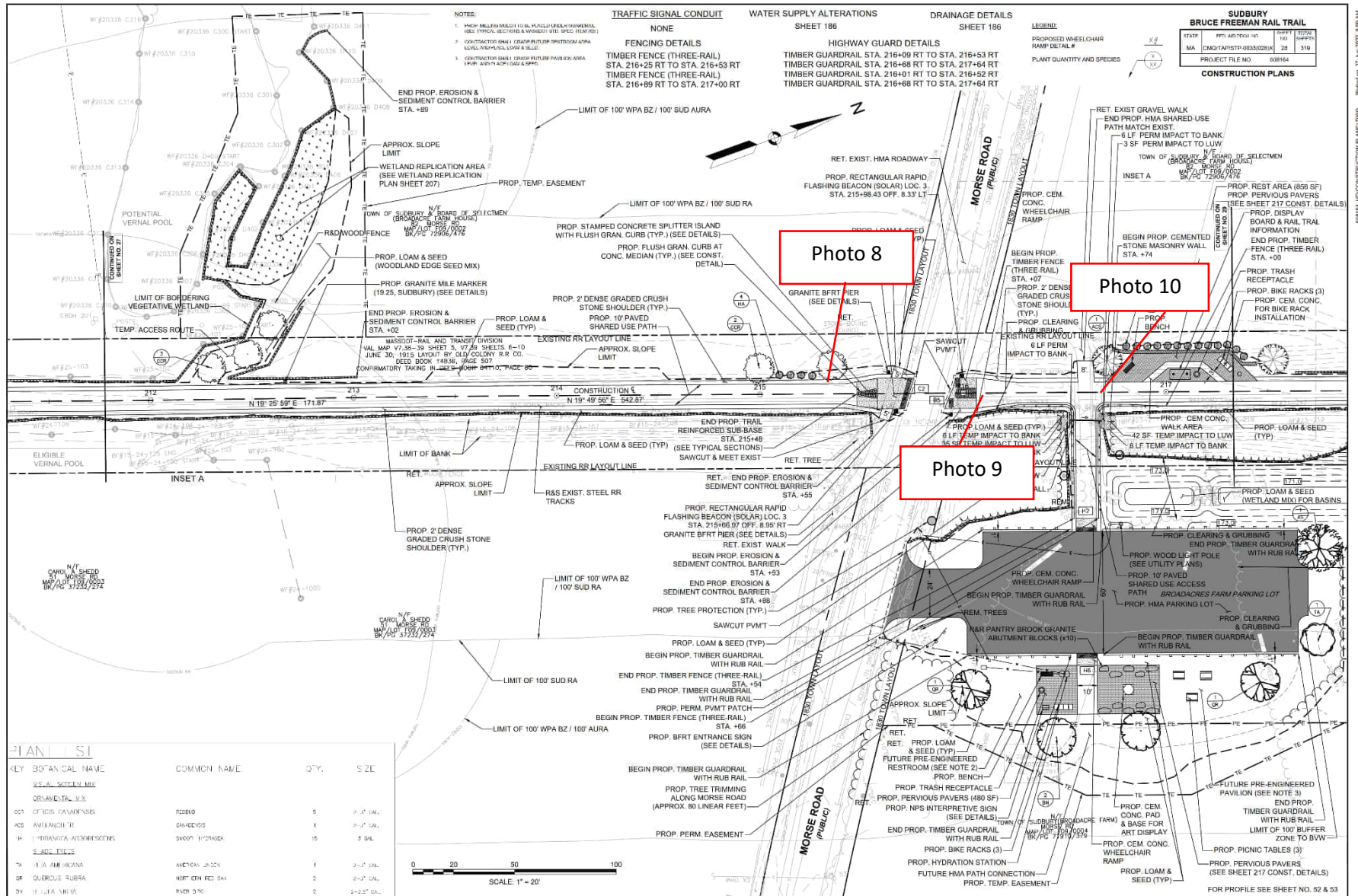


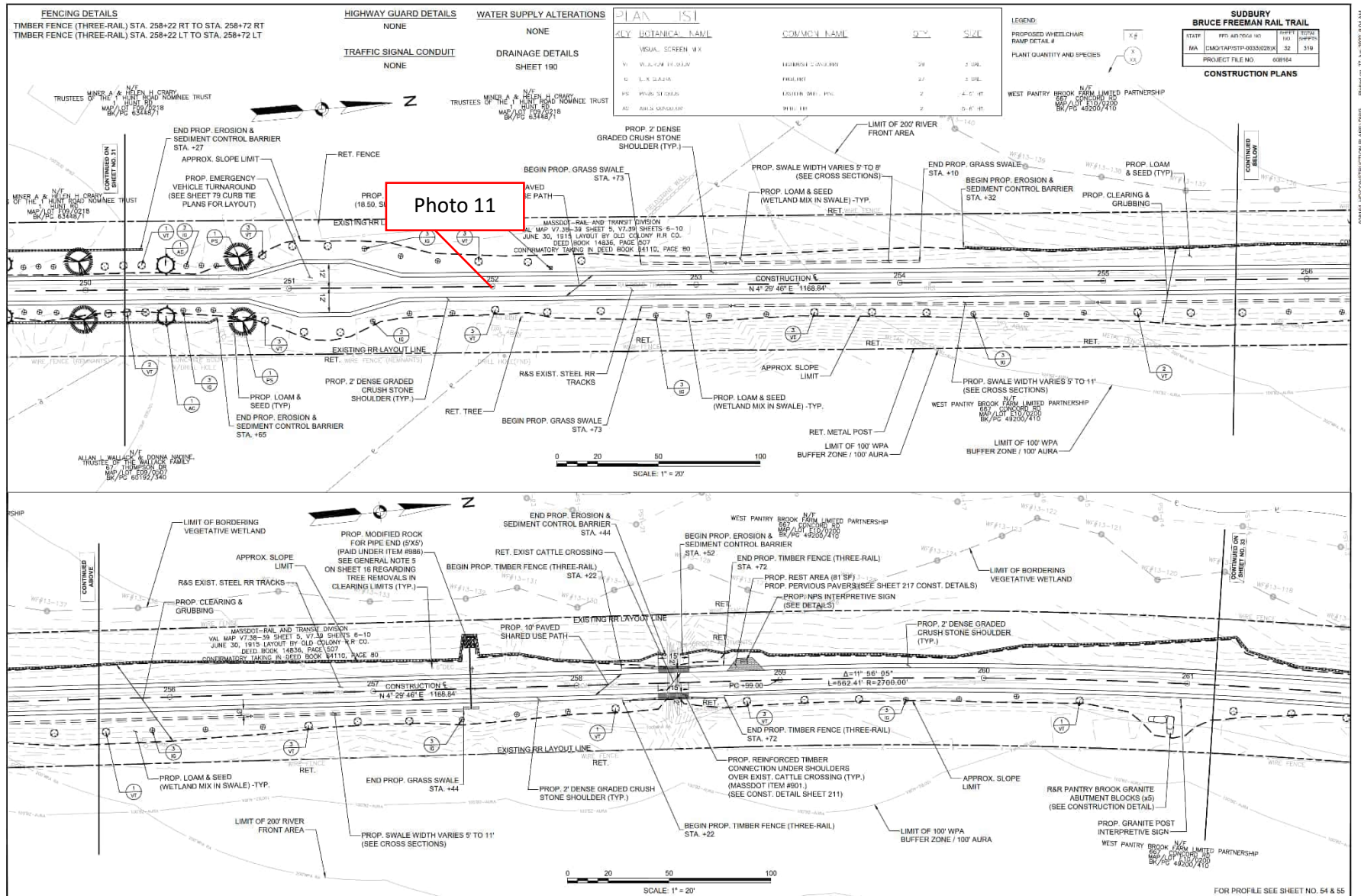


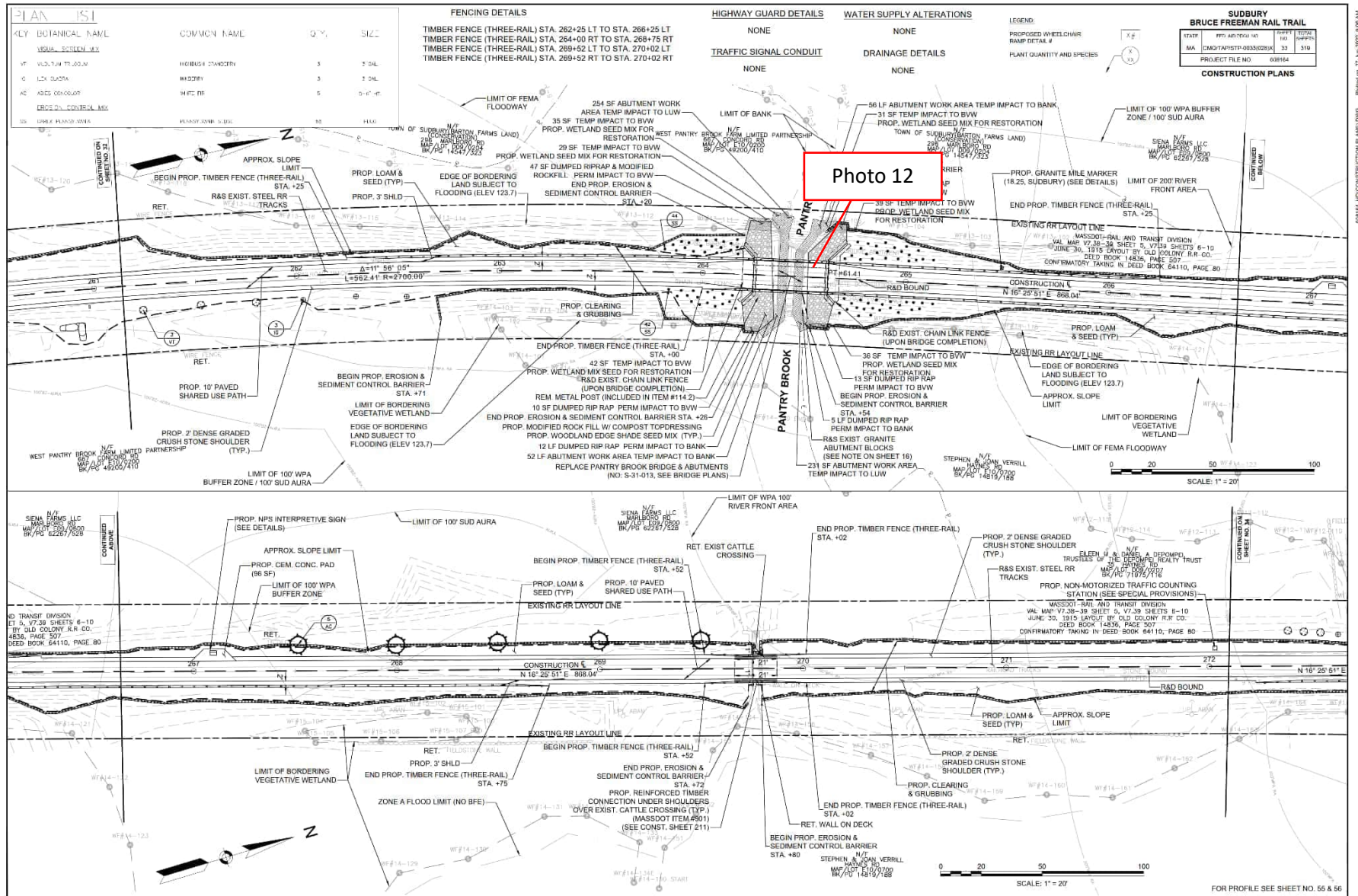


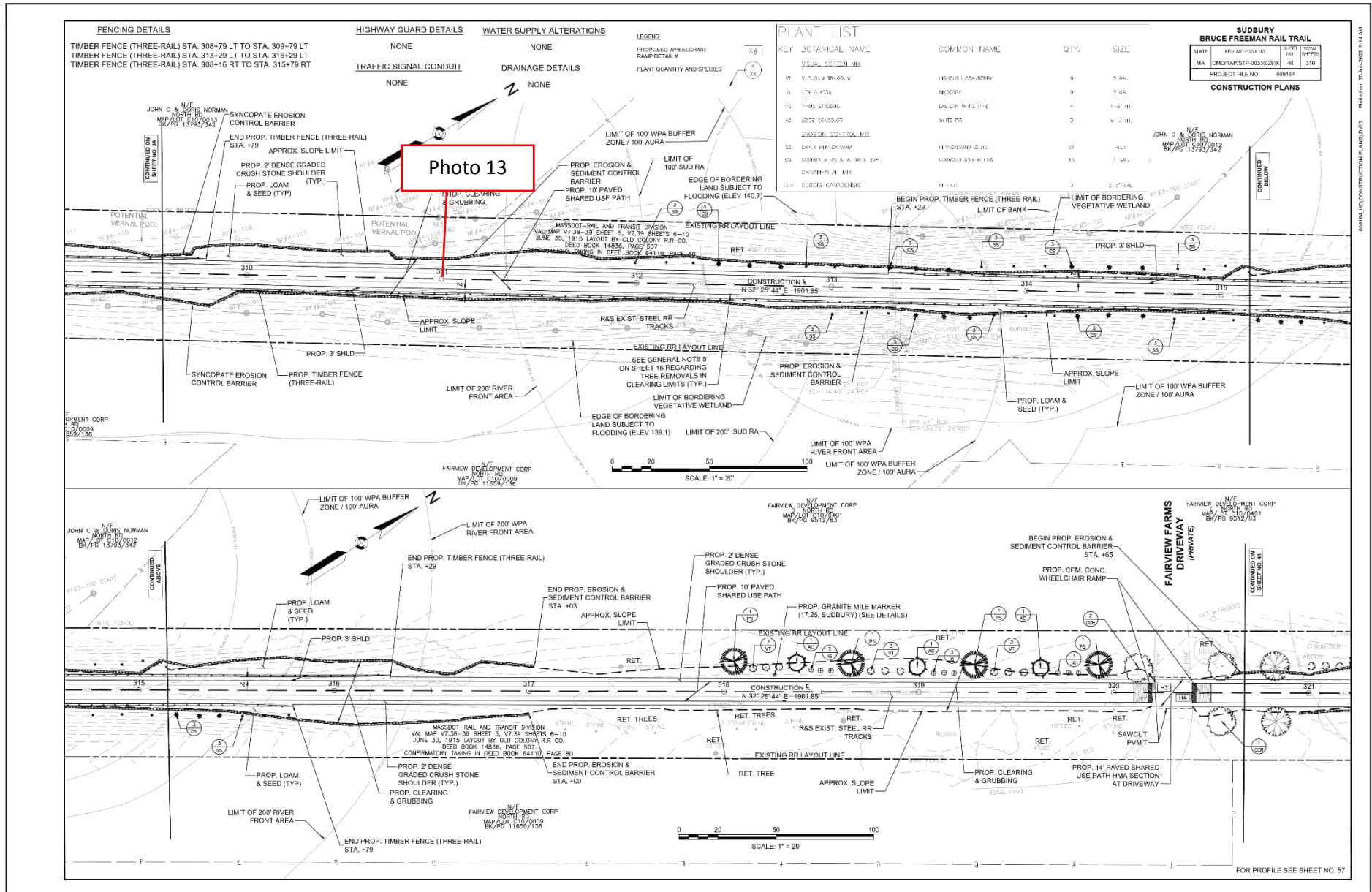


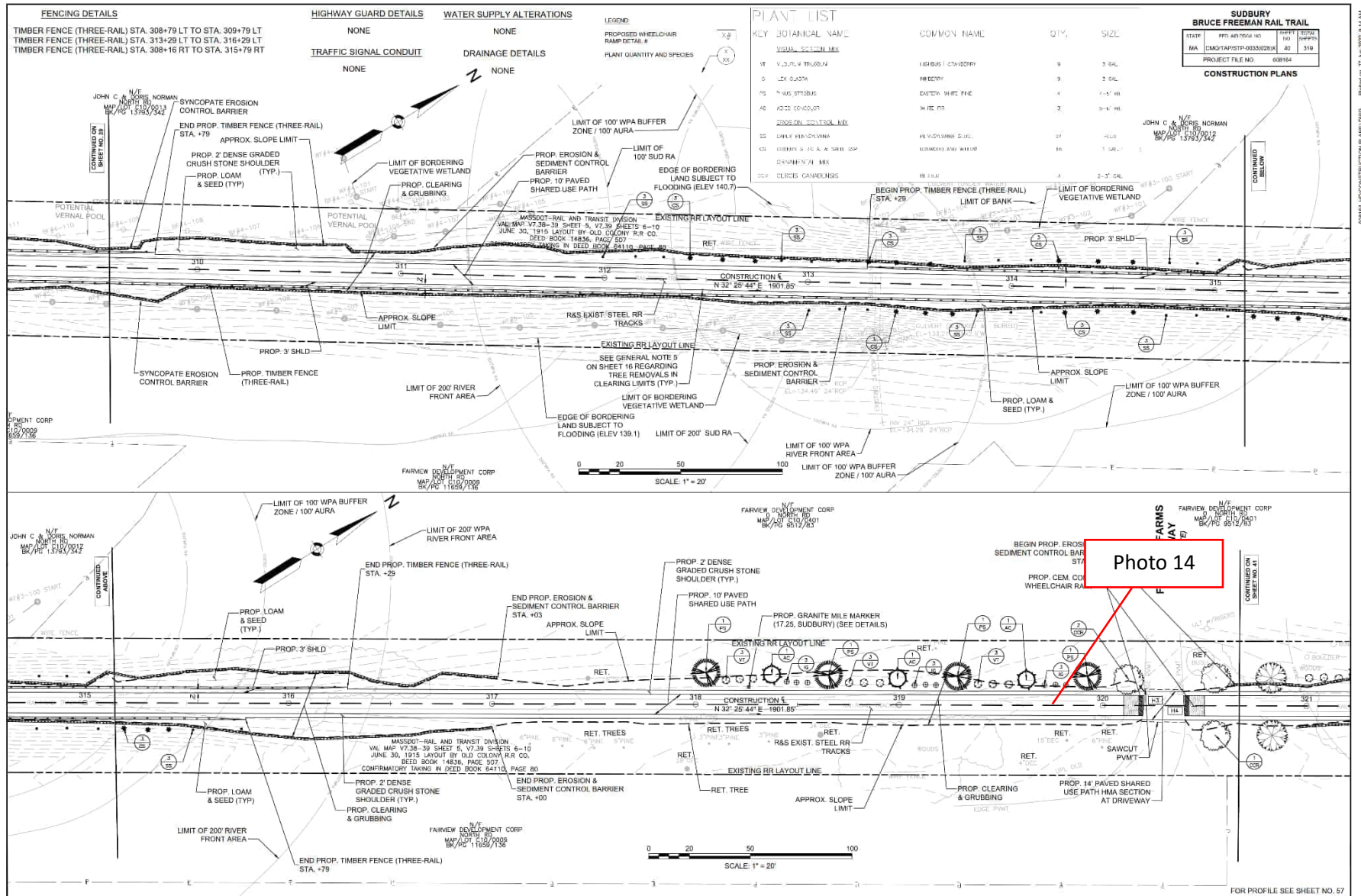


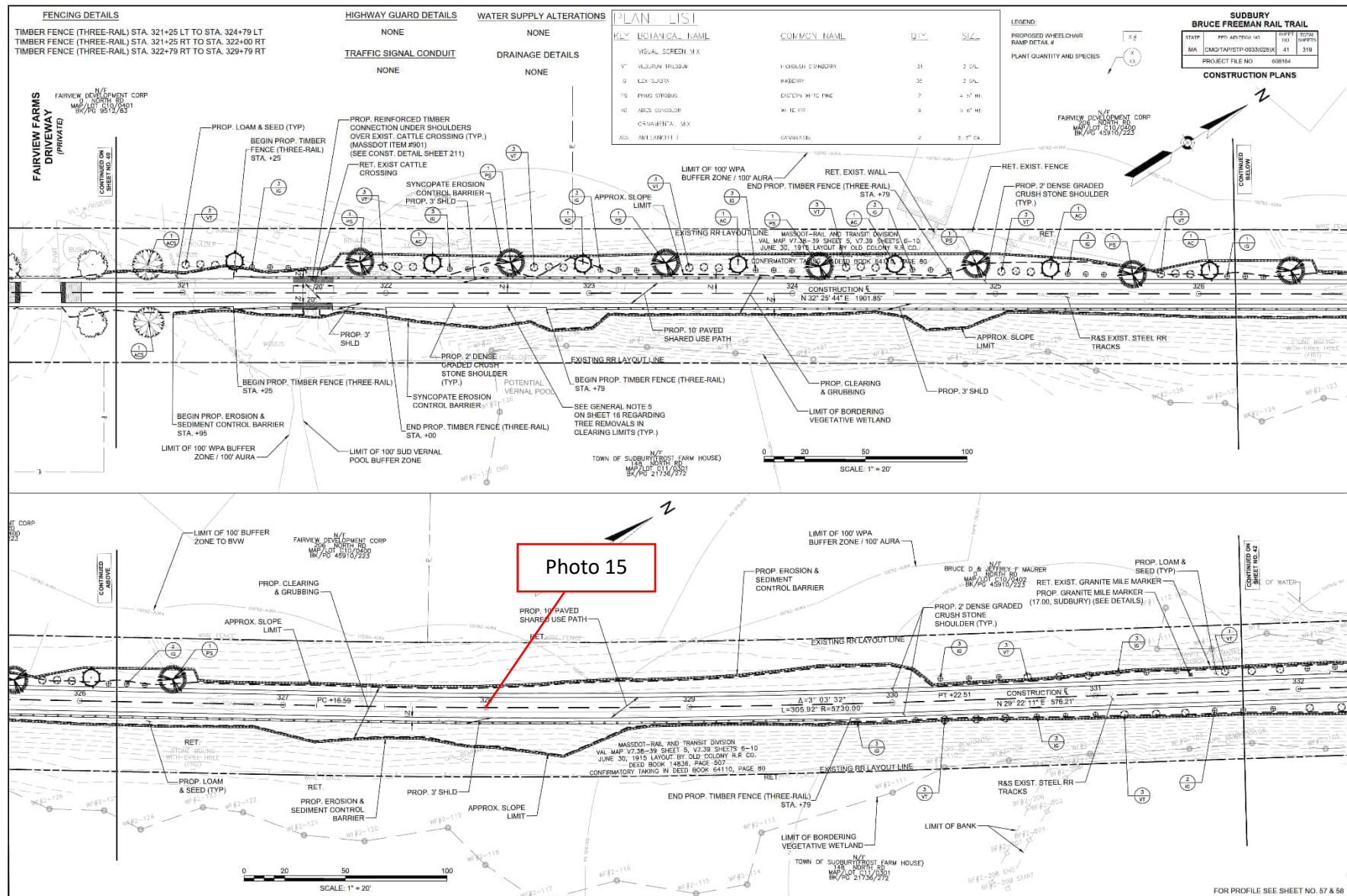


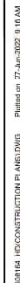




















Site Location		Bruce Freeman Rail Trail Right-of-Way	BETA Project No. 24.10326.23
Photo No. 1	Date: 7/1/2025		
Direction Photo Taken: Toward the North			
Description: View of the location of the overtopped compost filter tube and exposed soils beyond the limits of work at Station 105+00 per Compliance Action Item 43.			
Photo No. 2	Date: 7/1/2025		
Direction Photo Taken: Toward the Northwest			
Description: View of a black locust that requires removal at Station 115+50 per Long Term Compliance Action item 61.			



Site Location		Bruce Freeman Rail Trail Right-of-Way	BETA Project No. 24.10326.23
Photo No. 3	Date: 7/1/2025		
Direction Photo Taken: Toward the South			
Description: View of exposed soil that requires at Station 138+00 per Long Term Compliance Action item 61.			
Photo No. 4	Date: 7/1/2025		
Direction Photo Taken: Toward the East			
Description: View of bittersweet and Japanese knotweed that require removal in an area of exposed soil at Station 172+00 per Long Term Compliance Action Item 59 and 61.			

Site Location		Bruce Freeman Rail Trail Right-of-Way	BETA Project No. 24.10326.23
Photo No. 5	Date: 7/1/2025		
Direction Photo Taken: Toward the East			
Description: View of a location where crushed stone has migrated off of the path at Station 181+00 per Long Term Compliance Action Item 58.			
Photo No. 6	Date: 7/1/2025		
Direction Photo Taken: Toward the North			
Description: View of a location where crush stone has migrated off of the path and a population of Japanese hops that require removal at Station 187+00 per Long Term Compliance Action Item 58 and 57-1.			

Site Location		Bruce Freeman Rail Trail Right-of-Way	BETA Project No. 24.10326.23
Photo No. 7	Date: 7/1/2025		
Direction Photo Taken: Toward the South			
Description: View of a population of Japanese hops that require removal at Station 193+00 per Long Term Compliance Action item 57-1.			
Photo No. 8	Date: 7/1/2025		
Direction Photo Taken: Toward the South			
Description: View of the location where the stream bank has been regraded beyond the limits of work and exposed soils along the Bank at Station 215+75 per Long Term Compliance Action Items 41 and 62.			

Site Location		Bruce Freeman Rail Trail Right-of-Way	BETA Project No. 24.10326.23
Photo No. 9	Date: 7/1/2025		
Direction Photo Taken: Toward the West			
Description: View of exposed soils requiring stabilization and Japanese hops and garlic mustard requiring removal at Station 216+50 per Compliance Action Item 62, 57-1 and 61.			
Photo No. 10	Date: 7/1/2025		
Direction Photo Taken: Toward the North			
Description: View of exposed soil that requires stabilization and scour erosion at Station 217+25 per Compliance Action item 62.			

Site Location Bruce Freeman Rail Trail Right-of-Way		BETA Project No. 24.10326.23
Photo No. 11	Date: 7/1/2025	
Direction Photo Taken: Toward the South		
Description: View of exposed soils that require stabilization at Station 252+00 per Long Term Compliance Action Item 59.		
Photo No. 12	Date: 7/1/2025	
Direction Photo Taken: Toward the South		
Description: View of exposed soils along the Bank of Pantry Brook that requires the application of seed at Station 264+50 per Long Term Compliance Action Item 59.		

Site Location		Bruce Freeman Rail Trail Right-of-Way	BETA Project No. 24.10326.23
Photo No. 13	Date: 7/1/2025		
Direction Photo Taken: Toward the West			
Description: View of the location of placed loam that requires stabilization and Japanese hops within the loam that require removal at Station 311+50 per Long Term Compliance Action Item 59 and 57-1.			
Photo No. 14	Date: 7/1/2025		
Direction Photo Taken: Toward the South			
Description: View of Japanese hops that require removal within a planted tree at Station 319+75 per Long Term Compliance Action Item 57-1.			

Site Location		Bruce Freeman Rail Trail Right-of-Way	BETA Project No. 24.10326.23
Photo No. 15	Date: 7/1/2025		
Direction Photo Taken: Toward the West			
Description: View of an area of exposed soil at Station 328+00 per Long Term Compliance Action Item 59.			
Photo No. 16	Date: 7/1/2025		
Direction Photo Taken: Toward the South			
Description: View of the location of the riprap slope that extends beyond the limit of work along the WF1 Series wetland at Station 333+00 per Long Term Compliance Action Item 42.			