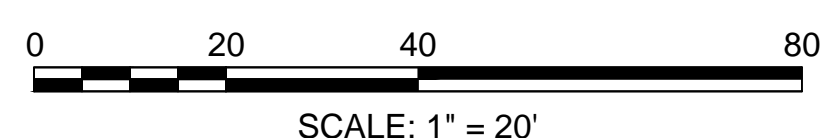


1. THE SITE CONTRACTOR SHALL POST "DEP" SIGN AND REVIEW THE CONDITIONS DESCRIBED IN THE "ORDER OF CONDITIONS" ISSUED FOR THIS PROJECT.
 2. EROSION CONTROL MEASURES (SEE DETAILS) SHALL BE INSTALLED PRIOR TO COMMENCEMENT OF CONSTRUCTION AS INDICATED.
 3. MEASURES SHALL BE TAKEN TO LIMIT THE TRACKING OF MATERIAL FROM THE SITE ONTO PLYMPTON AND/OR BOWEN ROAD.
 4. DUST SHALL BE CONTROLLED BY SPRINKLING OR OTHER APPROVED MEASURES AS NECESSARY.
 5. CATCH BASIN AND FLARED END STRUCTURES SHALL BE RINGED WITH STAKED HAYBALES UNTIL THE ADJACENT SLOPES HAVE FULLY VEGETATED.
 6. THROUGHOUT CONSTRUCTION, ALL DISTURBED AREAS SHALL BE LOADED AND SEEDED AND MULCHED AS SOON AS PRACTICABLE IN ORDER TO AVOID OVERLAND TRANSPORT OF SEDIMENT.
 7. EROSION CONTROL MEASURES ARE TO BE MAINTAINED THROUGHOUT THE CONSTRUCTION PERIOD AND PARTICULARLY AFTER SIGNIFICANT RAINFALL. DILAPIDATED HAYBALES AND SILT STOP SHALL BE REPLACED AS REQUIRED TO MAINTAIN THE INTEGRITY OF THE BARRIER.
 8. WITH SLOPES STABILIZED AND FINAL CONSERVATION COMMISSION INSPECTION COMPLETE, THE EROSION CONTROL BARRIER SHALL BE REMOVED AND PROPERLY DISPOSED OFF-SITE.



NOTE: UNDERGROUND UTILITY LOCATIONS ARE NOT GUARANTEED.
 IT SHALL BE THE RESPONSIBILITY OF THE CONTRACTOR TO VERIFY LOCATIONS AND ELEVATIONS OF EXISTING UTILITIES PRIOR TO COMMENCEMENT OF ANY CONSTRUCTION.
 DIGSAFE IS TO BE NOTIFIED 72 BUSINESS HOURS IN ADVANCE OF CONSTRUCTION. CALL DIGSAFE AT 811



CONSTRUCTION NOTES

- WETLANDS FLAGGED BY NORSE ENVIRONMENTAL SERVICES, INC., (978) 649-9932, 2100 LAKEVIEW AVENUE, UNIT 3A, DRACUT, MA 01826.
- THE CONTRACTOR SHALL REPORT TO THE OWNER AND ENGINEER ANY SIGNIFICANT VARIATIONS IN EXISTING SITE CONDITIONS FROM THOSE SHOWN ON THESE PLANS. ANY PROPOSED REVISIONS TO THE WORK, IF REQUIRED BY THESE SITE CONDITIONS, SHALL NOT BE UNDERTAKEN UNTIL REVIEWED BY THE OWNER AND THE ENGINEER.
- THE CONTRACTOR SHALL NOTIFY THE RELEVANT TOWN DEPARTMENTS AT LEAST 48 HOURS IN ADVANCE OF ANY REQUIRED INSPECTIONS.
- IN ORDER TO PROTECT THE PUBLIC SAFETY DURING CONSTRUCTION, THE CONTRACTOR IS RESPONSIBLE FOR INSTALLING AND MAINTAINING AT ALL TIMES NECESSARY SAFETY DEVICES AND PERSONNEL, WARNING LIGHTS, BARRICADES, AND POLICE DETAILS.
- THE CONTRACTOR SHALL REGULARLY INSPECT THE PERIMETER OF THE PROPERTY TO CLEAN UP AND REMOVE LOOSE CONSTRUCTION.
- IT SHALL BE THE RESPONSIBILITY OF THE CONTRACTOR TO INSTITUTE EROSION CONTROL MEASURES ON AN AS NECESSARY BASIS, SUCH THAT EXCESSIVE SOIL EROSION DOES NOT OCCUR. MEASURES SHALL INCLUDE HAY BALE DIKES ALONG THE PERIMETER OF CUTS AND FILLS, MULCHING, AND PLANTING OF DISTURBED AREAS AS SOON AS PRACTICABLE.
- AT THE END OF CONSTRUCTION THE CONTRACTOR SHALL REMOVE ALL CONSTRUCTION DEBRIS AND SURPLUS MATERIALS FROM THE SITE. A THOROUGH INSPECTION OF THE WORK PERIMETER IS TO BE MADE AND ALL DISCARDED MATERIALS, BLOWN OR WATER CARRIED DEBRIS, SHALL BE COLLECTED AND REMOVED.
- AT THE END OF CONSTRUCTION, AFTER ALL DISTURBED AREAS HAVE BEEN STABILIZED, AND WITH A MINIMUM OF 2-LAWN MOWINGS COMPLETE THE CONTRACTOR SHALL REMOVE THE EROSION CONTROL BARRIER.
- THE LOCATION OF UNDERGROUND UTILITIES AS REPRESENTED ON THESE PLANS IS BASED UPON PLANS AND INFORMATION PROVIDED BY THE RESPECTIVE UTILITY COMPANIES OR MUNICIPAL DEPARTMENTS SUPPLEMENTED BY FIELD IDENTIFICATION WHEREVER POSSIBLE. NO WARRANTY IS MADE AS TO THE ACCURACY OF THESE LOCATIONS OR THAT ALL UNDERGROUND UTILITIES ARE SHOWN. THE CONTRACTOR IS TO CONTACT DIG SAFE AT LEAST 72 HOURS PRIOR TO THE START OF CONSTRUCTION. DIG SAFE TELEPHONE NUMBER IS 811.
- EROSION CONTROL GRASS MIXTURE (SIDE SLOPE GREATER THAN 4 HORIZONTAL TO 1 VERTICAL) FOLLOWING COMPLETION OF GRADING. THE FOLLOWING SEED MIX SHALL BE APPLIED:

TYPE OF SEED	% BY WEIGHT
CREeping RED FESCUE	30
TALL FESCUE	30
WHITE DUTCH CLOVER	30
RED TOP	10

 SEED AT THE RATE OF 2#/2,000 SF. USE THE ABOVE MIX AT THE RATE OF 50#/ACRE AND WITH 1/2 BUSHEL/ACRE OF WINTER RYE.
- ALL DISTURBED AREAS ARE TO BE LOADED AND SEEDING WITH A MINIMUM OF 4" OF TOP SOIL SPREAD EVENLY THROUGHOUT. PROVIDE EROSION CONTROL MEASURES AS NECESSARY TO PROVIDE SLOPE STABILITY UNTIL VEGETATION IS ESTABLISHED.
- ALL STUMPS, TOP SOIL, SUB SOIL AND OTHER DELETERIOUS MATERIALS ARE TO BE REMOVED FROM THE PROPOSED BUILDING AND PAVING AREAS.
- LANDSCAPE CONTRACTOR SHALL SUPPLEMENT EXISTING SOIL MATERIALS WITH LOAMS, COMPOST AND FERTILIZER AS NEEDED IN ORDER TO ENSURE THAT PLANTINGS ARE PROVIDED WITH A SUITABLE EXCAVATION FOR PLANT GROWTH AND DEVELOPMENT.
- ALL PLANTING METHODS WILL BE IN STRICT ACCORDANCE WITH THE LATEST EDITION OF THE AMERICAN ASSOCIATION OF NURSERYMEN.
- PLANT LIST: A COMPLETE LIST OF PLANTS INCLUDING A SCHEDULE OF QUANTITIES, SIZES, TYPES AND NAMES IS INCLUDED IN THIS SET OF DRAWINGS. IN THE EVENT OF DISCREPANCIES BETWEEN QUANTITIES OF PLANTS IN THE PLANT LIST AND THE DRAWINGS, THE PLAN SHALL GOVERN. WHEN MULTIPLE PLANT SPECIES ARE LISTED IN ONE PLANT CATEGORY, THE GOAL IS TO PROVIDE THE COORDINATE THE SELECTION OF THE APPROPRIATE PLANTS AT LOCAL NURSERIES.
- ALL TREES AND SHRUBS SHALL BE NURSERY GROWN WITHIN A U.S.D.A. PLANT HARDINESS ZONE WHICH IS THE SAME AS, OR COLDER THAN, THE ZONE IN WHICH THE PROJECT IS LOCATED.
 - PLANT SUBSTITUTIONS ARE NOT ALLOWED UNLESS APPROVED BY ENGINEERING DESIGN CONSULTANTS, INC. & SUBURBY CONSERVATION COMMISSION.
 - THE ENGINEER, SHALL RECEIVE THE RIGHT TO INSPECT ALL PLANTS AND PLANTINGS AT ANY TIME TO INSURE SPECIFICATIONS AND PROCEDURES ARE ADHERED TO.
 - ALL DISTURBED AREAS TO BE LOADED AND SEEDING AND BLENDED INTO EXISTING GRADE AND CONDITIONS.

TYPE OF SEED	% BY WEIGHT
CREeping RED FESCUE	30
TALL FESCUE	30
WHITE DUTCH CLOVER	30
RED TOP	10

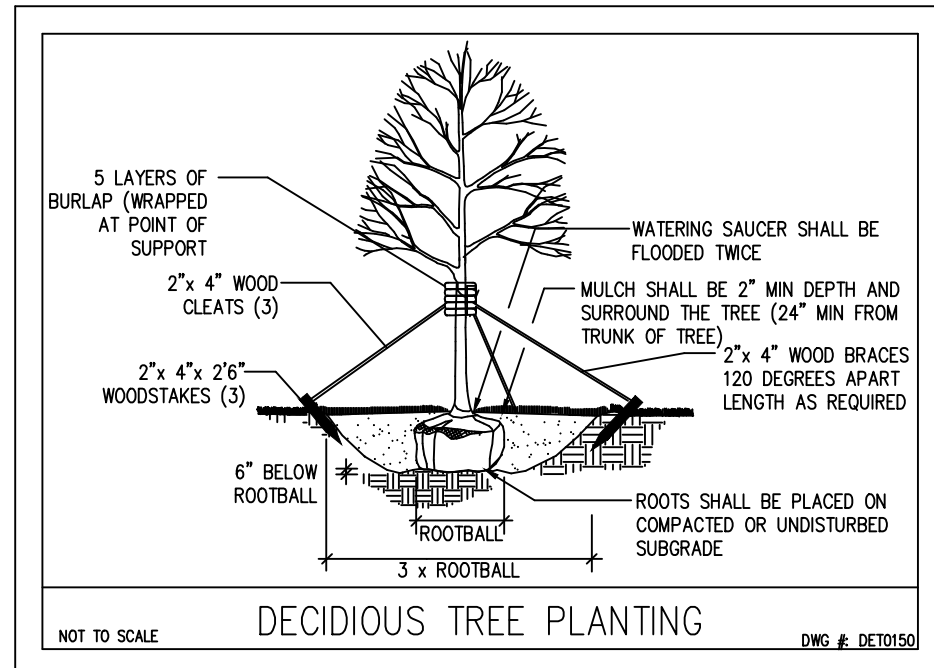
SEED AT THE RATE OF 2#/2,000 SF. USE THE ABOVE MIX AT THE RATE OF 50#/ACRE AND WITH 1/2 BUSHEL/ACRE OF WINTER RYE.

- DISCREPANCIES BETWEEN QUANTITIES OF PLANTS IN THE PLANT LIST AND THE DRAWINGS, THE PLAN SHALL GOVERN.
- ALL STUMPS, TOP SOIL, SUB SOIL AND OTHER DELETERIOUS MATERIALS ARE TO BE REMOVED FROM THE PROPOSED BUILDING AND PAVING AREAS.
- LANDSCAPE CONTRACTOR SHALL SUPPLEMENT EXISTING SOIL MATERIALS WITH LOAMS, COMPOST AND FERTILIZER AS NEEDED IN ORDER TO ENSURE THAT PLANTINGS ARE PROVIDED WITH A SUITABLE EXCAVATION FOR PLANT GROWTH AND DEVELOPMENT.
- ALL PLANTING METHODS WILL BE IN STRICT ACCORDANCE WITH THE LATEST EDITION OF THE AMERICAN ASSOCIATION OF NURSERYMEN.
- PLANT LIST: A COMPLETE LIST OF PLANTS INCLUDING A SCHEDULE OF QUANTITIES, SIZES, TYPES AND NAMES IS INCLUDED IN THIS SET OF DRAWINGS. IN THE EVENT OF DISCREPANCIES BETWEEN QUANTITIES OF PLANTS IN THE PLANT LIST AND THE DRAWINGS, THE PLAN SHALL GOVERN. WHEN MULTIPLE PLANT SPECIES ARE LISTED IN ONE PLANT CATEGORY, THE GOAL IS TO PROVIDE THE COORDINATE THE SELECTION OF THE APPROPRIATE PLANTS AT LOCAL NURSERIES.
- ALL TREES AND SHRUBS SHALL BE NURSERY GROWN WITHIN A U.S.D.A. PLANT HARDINESS ZONE WHICH IS THE SAME AS, OR COLDER THAN, THE ZONE IN WHICH THE PROJECT IS LOCATED.
 - PLANT SUBSTITUTIONS ARE NOT ALLOWED UNLESS APPROVED BY ENGINEERING DESIGN CONSULTANTS, INC. & SUBURBY CONSERVATION COMMISSION.
 - THE ENGINEER, SHALL RECEIVE THE RIGHT TO INSPECT ALL PLANTS AND PLANTINGS AT ANY TIME TO INSURE SPECIFICATIONS AND PROCEDURES ARE ADHERED TO.
 - ALL DISTURBED AREAS TO BE LOADED AND SEEDING AND BLENDED INTO EXISTING GRADE AND CONDITIONS.

SOIL TESTING

6-26-2024

TEST PIT	DEPTH	SOIL TYPE	ELEVATION
TEST PIT 1	0"	A LAYER LOAM	169.5
	6"	Bw LAYER SANDY LOAM	169.0
	18"	C LAYER SAND & GRAVEL	168.0
	32"	STATIC WATER LEVEL	166.8
TEST PIT 2	0"	A LAYER LOAM	169.3
	6"	Bw LAYER SANDY LOAM	168.8
	18"	C LAYER SAND & GRAVEL	167.8
	32"	STATIC WATER LEVEL	166.6
BOE			162.5
BOE			162.3



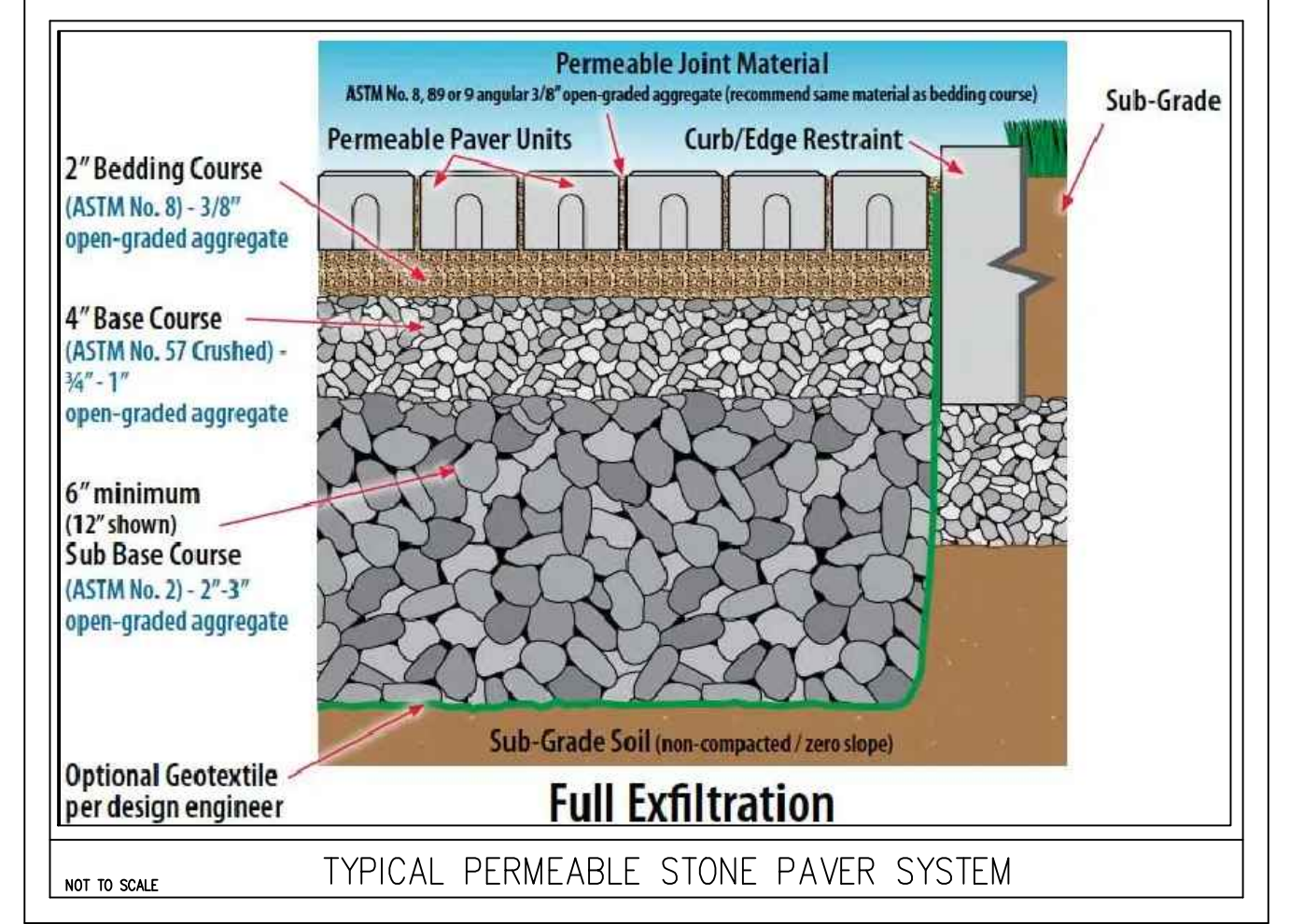
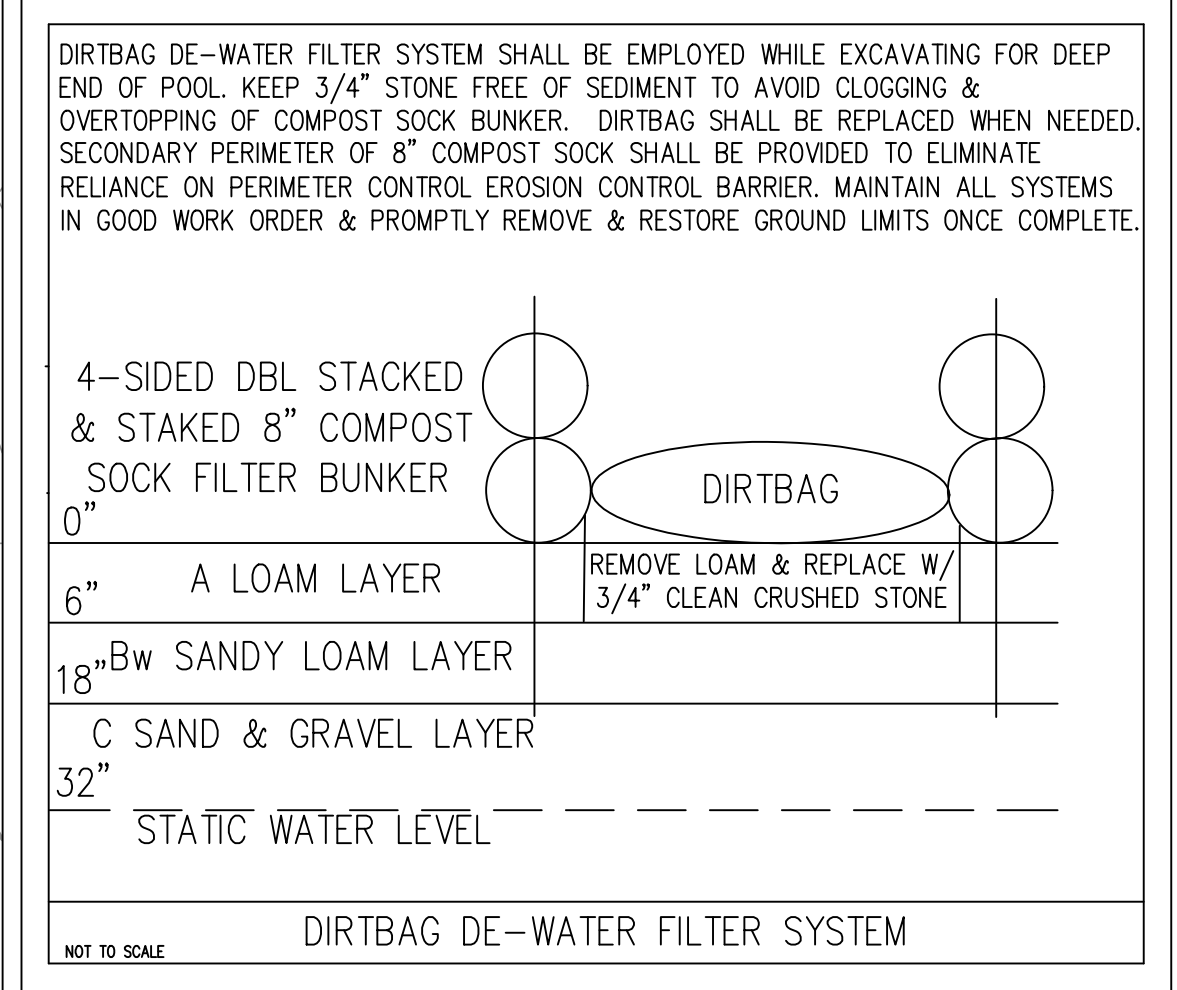
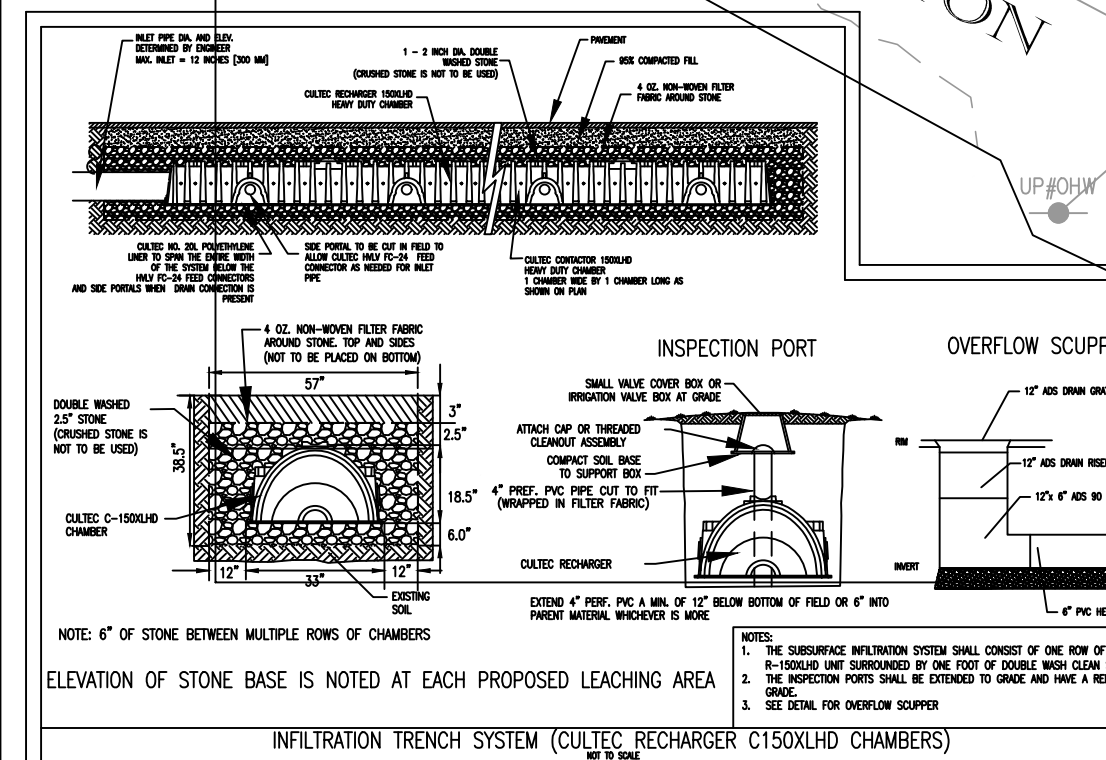
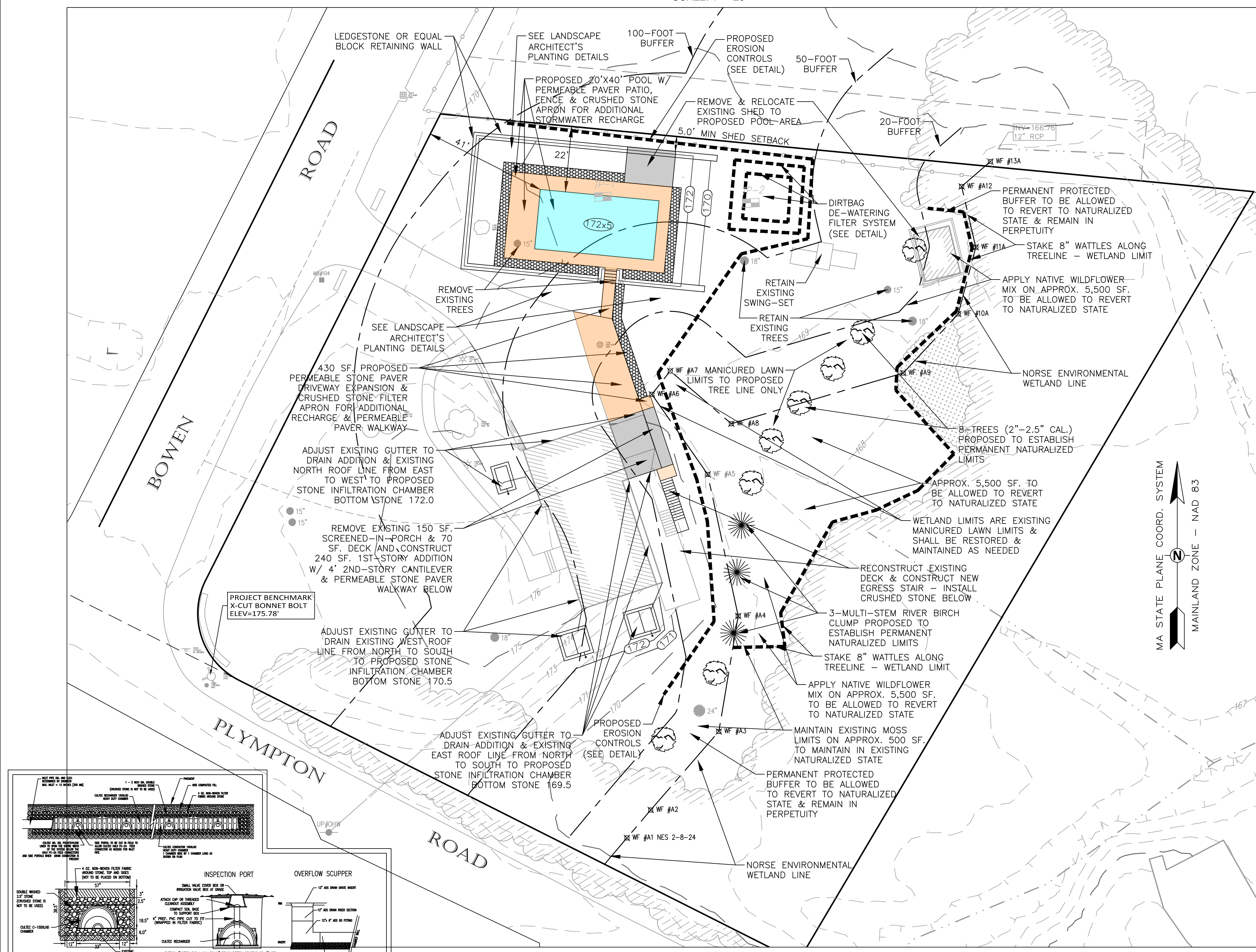
GENERAL LANDSCAPE NOTES:

- 20-FOOT BUFFER ZONE LIMITS AS INDICATED SHALL BE TREATED WITH NEW ENGLAND NATIVE WILDFLOWER SEED MIX, FROM NEW ENGLAND WETLAND PLANT, INC. SOUTH HADLEY, MA (PH. 413-548-8000 AND REMAINING TURF LIMITS ARE TO BE MAINTAINED AS LAWN AND/OR LANDSCAPING UNLESS EXPLICITLY IDENTIFIED OTHERWISE.
- LANDSCAPE PLANT MATERIALS AND DETAILS AS OUTLINE HEREIN ARE TO BE ADHERED TO AS OUTLINED AND NO SUBSTITUTIONS ARE PERMITTED WITHOUT PRIOR CONSULTATION WITH PROJECT ENGINEER AND WRITTEN APPROVAL FROM THE SUBURBY CONSERVATION COMMISSION.
- ALL TREES AND ASSOCIATED VEGETATION BEYOND THE IDENTIFIED WORK LIMITS SHALL RETAINED IN ITS NATURAL STATE.

PLANTING KEY

- 8 TREES INDICATED 2 SUGAR MAPLE, 3 RED MAPLE, AND 3 SILVER MAPLE TREES ALTERNATING (2-2.5" CAL.)
- 3 MULTI-STEM RIVER BIRCH CLUMP TREES INDICATED

ANY TREE THAT DOES NOT ESTABLISH WITHIN 3 GROWING SEASONS MUSTY BE REPLACED IN-KIND



ENGINEERING DESIGN CONSULTANTS, INC. SHALL NOT BE RESPONSIBLE FOR CONSTRUCTION MEANS, METHODS, TECHNIQUES, OR PROCEDURES UTILIZED BY THE CONTRACTOR, NOR FOR THE SAFETY OF PUBLIC OR CONTRACTORS EMPLOYEES, OR FOR THE FAILURE OF THE CONTRACTOR TO CARRY OUT THE WORK IN ACCORDANCE WITH THE CONTRACT DOCUMENTS.

ENGINEERING DESIGN CONSULTANTS, INC.'S LIABILITY FOR THIS PLAN IS LIMITED TO THE EXTENT OF ITS FEE LESS THIRD PARTY COSTS.

COPYRIGHT (C) BY ENGINEERING DESIGN CONSULTANTS, INC. ALL RIGHTS RESERVED.

NO PART OF THIS DOCUMENT MAY BE REPRODUCED, STORED IN A RETRIEVAL SYSTEM, OR TRANSMITTED IN ANY FORM OR BY ANY MEANS, ELECTRONIC MECHANICAL, PHOTOCOPYING, RECORDING OR OTHERWISE WITHOUT THE PRIOR WRITTEN PERMISSION OF ENGINEERING DESIGN CONSULTANTS, INC. ANY MODIFICATIONS TO THIS DOCUMENT WITHOUT THE WRITTEN PERMISSION OF ENGINEERING DESIGN CONSULTANTS, INC. SHALL RENDER THEM INVALID AND UNUSABLE.

REV. NO.	DATE	REVISION	MADE BY	CHKD BY	APPD BY
2	7/15/24	ADDRESS COMMENTS & REISSUED FOR ORDER OF CONDITIONS	ZRB	PSB	WML
1	7/8/24	ADDRESS COMMENTS & REISSUED FOR ORDER OF CONDITIONS	ZRB	PSB	WML
0	6/3/24	ISSUED FOR ORDER OF CONDITIONS	ZRB	PSB	WML

DRAWING TITLE: MAP G11 PARCEL 0123 SITE DEVELOPMENT PLAN

PREPARED FOR: ANDREW & EMILY BOULEY

PROJECT TITLE: BOULEY RESIDENCE 104 PLYMPTON ROAD SUDBURY, MASSACHUSETTS

PREPARED BY: Engineering Design Consultants, Inc. 32 Turnpike Road Southborough, Massachusetts 01772 TELE NO.: (508) 480-0225 FAX NO.: (800) 832-5781

SCALE: 1" = 20'

DATE: 6/3/24

SHEET: 1 OF 1

PLAN NO.: 3864



MountainScapes

Landscapes Construction, LLC

68 Technology Way
Nashua, NH 03060

phone: 603.718.0731
www.MountainScapesnh.com

104 Plumpton Rd
Sudbury, MA

Date: 6/3/2024

Deck Plan

Scale:

N/S

Approved:
Revise:

Revision:

1
2
3

Date:

7.15.24

D1

