



"A.A. Will Corporation  
 "145 Island Street  
 "Stoughton, MA 02072  
 "P: (781) 341-4800  
 "F: (781) 297-9776

Date:	Transmittal No.
Project No:	Contract No:
MassDOT Project No. 608164	
Construction of the Bruce Freeman Rail Trail	
(Phase 2D)	

To: \_\_\_\_\_  
 \_\_\_\_\_  
 \_\_\_\_\_

From: \_\_\_\_\_  
 \_\_\_\_\_  
 Signature: \_\_\_\_\_

- AAW TRANSMIT:**  Attached  Fax  Hand Carried  Mailed  
 Change Order Request  Copy of Letter  Plans  Samples  Specifications  
 Shop Drawings  Submittal  Other: \_\_\_\_\_

COPIES	DATE	ITEM DESCRIPTION / PREPARED BY

- THESE ARE TRANSMITTED:**  Approved as Noted  Approved as Submitted  As Requested  
 For Approval  For Your Use  Resubmit \_\_\_ Copies for Approval  
 Return \_\_\_ Corrected Prints  Returned for Corrections  Prints Returned  
 Submit \_\_\_ Copies for Correction  
 Other: \_\_\_\_\_

Comments: \_\_\_\_\_  
 \_\_\_\_\_  
 \_\_\_\_\_

Distribution: \_\_\_\_\_  
 \_\_\_\_\_  
 \_\_\_\_\_

PREPARED BY \_\_\_\_\_ DATE \_\_\_\_\_

RECEIVED BY \_\_\_\_\_ DATE \_\_\_\_\_

PRINT NAME \_\_\_\_\_

PRINT NAME \_\_\_\_\_



# Bruce Freeman Rail Trail Project - Sudbury Invasive Plant Management Plan

**Submitted: December, 2022**

***Prepared For:***

AA Will Corporation  
145 Island Street  
Stoughton, MA 02072  
Phone: (781) 341-4800

***Prepared By:***

SOLitude Lake Management  
590 Lake Street  
Shrewsbury, MA 01545  
Phone: (888) 480-5253  
FAX: (888) 358-0088  
info@solitudelake.com  
[www.solitudelakemanagement.com](http://www.solitudelakemanagement.com)

# Table of Contents

---

Introduction	<b>3</b>
Existing Pre-Construction Invasive Species Conditions	<b>3</b>
Invasive Species Management Plan	<b>4</b>
Initial Management Methods within the LOW	4
Management Methods Outside LOW and Inside ROW	6
Invasive Plant Monitoring	<b>7</b>
Follow-up and Ongoing Management	<b>7</b>



## Introduction

AA Will Corporation under contract to MA DOT will be conducting construction activities related to the construction of an approximate 5.0 mile segment of the Bruce Freeman Rail Trail (4.4 miles in Sudbury and 0.5 miles in Concord). This segment will run from south of Powder Mill Road in Concord south to the Mass Central Rail Trail located just west of Union Avenue.

Per Special Conditions 'b' and 'c' of Part II - Project Specific Conditions within the Order of Conditions issued by the Sudbury Conservation Commission, requires mapping of invasive species populations, designation of a minimum of 4.0 acres of mitigative invasive plant control outside of the Limit of Work, but within the MA DOT Rail Division Right of Way (ROW), and submission of a Invasive Species Management Plan prior to any land disturbance within the project area. The following sections of this document are intended to provide documentation of the pre-construction invasive species composition and distribution throughout the project corridor, proposed management locations and strategies, as well as ongoing management requirements, monitoring, and reporting.

## Existing Pre-Construction Invasive Species Conditions

A baseline survey was conducted along the subject section of the ROW in late November and early December of 2022 to identify invasive species present and map the extent of these populations and assemblages. GIS based maps resulting from in-field GPS data collection are provided in Attachment A. Although effort was made to provide species specific polygons to illustrate the true extent of each species, many of the species were too intermixed for this to be accurately delineated. As such, some of the more heavily commingled areas have been reported as an invasive species assemblage. In addition, single waypoints were recorded to document the occurrence of a single invasive plant or small cluster of the same species located within a larger population of a different invasive plant population.

A list of the invasive plant species documented within the ROW are provided in Table 1. These species are listed in order of relative abundance throughout the site from most abundant to least abundant.



**Table 1 - Existing Invasive Species List**

<b>Common Name</b>	<b>Scientific Name</b>	<b>Total (sq-ft)</b>	<b>LOW-ROW (sq-ft)</b>
Glossy buckthorn	<i>Rhamnus frangula</i>	431,842	79,118
Asiatic Bittersweet	<i>Celastrus orbiculatus</i>	91,612	25,932
Morrow's honeysuckle	<i>Lonicera morrowii</i>	72,375	25,245
Burning bush	<i>Euonymus alatus</i>	53,908	20,196
Multiflora rose	<i>Rosa multiflora</i>	51,312	8,503
Common reed	<i>Phragmites australis</i>	25,092	19,865
Japanese barberry	<i>Berberis thunbergii</i>	25,033	8,746
Porcelain berry	<i>Ampelopsis brevipedunculata</i>	12,233	1,004
Garlic mustard	<i>Alliaria petiolata</i>	7,803	1,898
Wineberry	<i>Rubus phoenicolasius</i>	5,121	2,161
Norway maple	<i>Acer platanoides</i>	420	50
Autumn olive	<i>Elaeagnus umbellata</i>	210	56
Purple loosestrife	<i>Lythrum Salicaria</i>	186	150
<b>Total Invasive Species Extent</b>		<b>777,1479</b>	<b>192,924</b>

## **Invasive Species Management Plan**

The goal of this invasive species management plan is two fold, 1)to control and prevent the spread/expansion of existing invasive plant populations within the LOW that may result from the permitted construction activities. 2) invasive species management to restore/enhance wildlife habitat characteristics in areas outside of the LOW and within the greater ROW limits as a means of mitigation for wetland and/or riverfront disturbance associated with construction. As result, this plan is broken into two sections that lay out specific management strategies for these separate management functions.

### *Initial Management Methods within the LOW*

Prevention of spread will be the primary focus of invasive management within the LOW. The order of construction operations and physical invasive plant control methods will be utilized to minimize the potential for spreading the existing invasive plant infestation(s)



within the LOW corridor and adjacent areas within the larger ROW. Throughout these activities the contractor will employ best management practices to prevent the spread and/or transport of viable plant material/propagules such as cleaning equipment of visible plant material prior to start of work and at the completion of each work day.

#### Site Clearing

Prior to any soil disturbance general clearing of the LOW area will be conducted. All invasive species growth within the LOW work will be cut above the existing grade and stockpiled in distinct piles within the LOW, but beyond the footprint of the existing railway ties. Once this clearing is completed the metal rail system will be removed (embedded rail ties will remain undisturbed and in place) in order to facilitate access for a rubber tired truck and chipping equipment. Once the rails are removed, the stockpiled plant biomass will be collected and chipped directly into a truck for transport to an offsite landfill or composting facility.

#### Grubbing

Following the cutting and chipping of the above ground invasive plant biomass the remaining invasive plant root material will be removed from the ground. To the extent possible these activities will occur during plant dormancy to mitigate the presence of fruiting bodies and the possible transport/spread of viable plant propagules. Removed plant material will be loaded into a truck and transported off-site.

#### Low-Volume Herbicide Treatment

Following clearing and grubbing activities, occurrences of invasive species regrowth will be spot-treated using one of the following application techniques; low-volume foliar, cut stump/stem, and/or basal bark. The most appropriate technique will be employed based on target species location, density, and abundance. USEPA and MA DAR registered and aquatic labeled products will be applied at approved label rates. We anticipate that the following products will be required for the management of the target species - triclopyr (Renovate 3, Garlon 3A, Garlon Ultra), Glyphosate (Rodeo, Aquaneat, AquaPro), and Imazamox (Clearcast, Imox, Raptor). A sticker/spreader surfactant will be combined with the herbicide solution for foliar applications to maximize target plant absorption and efficacy. Foliar treatments will be conducted during active



growth periods when existing vegetative regrowth has sufficient leaf surface to facilitate proper herbicide uptake.

*Management Methods Outside LOW and Inside ROW*

As you can see in the table above the vast majority of the observed invasive plant growth exists within the footprint of the rail bed and the LOW. A total of 4.42 acres of invasive species growth exists outside the LOW. Per Special Condition 'c' of Part II of the Order of Conditions a total of 4 acres of invasive species management is required outside the LOW. As such, all of the documented invasive plant growth within the ROW but beyond the LOW will be managed.

Low-Volume Herbicide Treatment

Following clearing and grubbing activities, occurrences of invasive species regrowth will be spot-treated using one of the following application techniques; low-volume foliar, cut stump/stem, and/or basal bark. The most appropriate technique will be employed based on target species location, density, and abundance. USEPA and MA DAR registered and aquatic labeled products will be applied at approved label rates. We anticipate that the following products will be required for the management of the target species - triclopyr (Renovate 3, Garlon 3A, Garlon Ultra), Glyphosate (Rodeo, Aquaneat, AquaPro), and Imazamox (Clearcast, Imox, Raptor). A sticker/spreader surfactant will be combined with the herbicide solution for foliar applications to maximize target plant absorption and efficacy. Foliar treatments will be conducted during active growth periods when existing vegetative regrowth has sufficient leaf surface to facilitate proper herbicide uptake.

Given the observed invasive plant growth conditions we anticipate utilizing the following management strategies; however, specific site conditions will dictate the approach employed.

<b>Management Strategy</b>	<b>Plant Species</b>	<b>General Description</b>
Cut Stump/Stem	<ul style="list-style-type: none"> <li>● Norway Maple</li> <li>● Lg. Morrow's honeysuckle</li> <li>● Lg. burning bush</li> <li>● Lg. Asiatic bittersweet</li> </ul>	Any specimen greater than 8ft. tall will be managed using cut stump. plants will be cut at ground level and the stump treated with triclopyr and



	<ul style="list-style-type: none"> <li>● Lg. Glossy buckthorn</li> <li>● Lg. Autumn Olive</li> </ul>	basal oil mixture. Cut biomass will be chipped and removed from the site
<b>Management Strategy</b>	<b>Plant Species</b>	<b>General Description</b>
Low-Volume Foliar Spray	<ul style="list-style-type: none"> <li>● Multiflora rose</li> <li>● common reed</li> <li>● Japanese barberry</li> <li>● Porcelain berry</li> <li>● Garlic mustard</li> <li>● Purple loosestrife</li> <li>● Sm. Glossy buckthorn</li> <li>● Sm. Morrow's honeysuckle</li> <li>● Seedling Asiatic bittersweet</li> <li>● Sm. Burning bush</li> <li>● Sm. Autumn olive</li> </ul>	Any specimen less than 8ft. tall will be treated using a low-volume foliar spray (back-pack sprayer). Woody species will be treated with triclopyr and a non-ionic surfactant. Multiflora rose, common reed, porcelain berry, garlic mustard, and purple loosestrife will be treated using glyphosate or imazamox and a methylated seed oil (MSO)I surfactant

Manual Removal/Hand-Pulling

Small seedling single stem specimens will be manually hand-pulled, bagged onsite and removed for final disposal at an approved off-site compost or landfill facility. To the extent possible hand removal will be conducted when no fruits/seeds are present.

**Invasive Plant Monitoring**

Ongoing monitoring of the invasive plant populations will be important to understand the impacts of construction activities and active management alike. As such, the species identification and GPS mapping methods employed during the pre-construction survey will be replicated annually for the duration of the construction activities. Annual monitoring/mapping would be conducted during the late summer-early fall period. A report will be submitted outlining the changes in invasive plant cover, an updated map set, and recommended ongoing management requirements.

**Follow-up and Ongoing Management**

Ongoing spot application of herbicides and manual removal of individual plants, as described, will continue annually for the duration of the construction activities. Active





management will be conducted during active plant growth, but prior to the development of propagules.





Esri Community Maps Contributors, MassGIS, © OpenStreetMap, Microsoft, Esri, HERE, Garmin, SafeGraph, GeoTechnologies, Inc, METI/NASA, USGS, EPA, NPS, US Census Bureau, USDA, Maxar, Microsoft

Sudbury DOT

0 10 20 40 Feet

1:480

North Arrow

Legend					
<span style="color: blue;">■</span> Autumn olive	<span style="color: red;">■</span> Bittersweet, wineberry, bittersweet, multiflora rose, burning bush	<span style="color: yellow;">■</span> Buckthorn, multiflora rose, honeysuckle, barberry	<span style="color: blue;">■</span> Honeysuckle, bittersweet, buckthorn	<span style="color: green;">■</span> Multiflora rose	<span style="color: lightgreen;">■</span> Common reed
<span style="color: teal;">■</span> Burning bush	<span style="color: darkgreen;">■</span> Glossy buckthorn	<span style="color: blue;">■</span> Garlic mustard	<span style="color: red;">■</span> Japanese barberry	<span style="color: brown;">■</span> Norway Maple	<span style="color: purple;">■</span> Wineberry
<span style="color: magenta;">■</span> Bittersweet		<span style="color: olive;">■</span> Honeysuckle	<span style="color: pink;">■</span> Catalpa tree	<span style="color: purple;">■</span> Porcelain berry, bittersweet, multiflora rose	
					<span style="color: red;">—</span> ROW
					<span style="color: lightgreen;">—</span> LOW
					<span style="color: grey;">—</span> Tracks
					<span style="color: blue;">—</span> Wetland
					<span style="color: yellow;">—</span> Sheet Boundary

**SOLITUDE**  
LAKE MANAGEMENT

888.480.5253  
solitudelakemanagement.com



Esri Community Maps Contributors, MassGIS, © OpenStreetMap, Microsoft, Esri, HERE, Garmin, SafeGraph, GeoTechnologies, Inc, METI/NASA, USGS, EPA, NPS, US Census Bureau, USDA, Maxar, Microsoft

Sudbury DOT

0 10 20 40 Feet

1:480

North Arrow

Legend					
<span style="color: blue;">■</span> Autumn olive	<span style="color: red;">■</span> Bittersweet, wineberry, bittersweet, multiflora rose, burning bush	<span style="color: lightgreen;">■</span> Buckthorn, multiflora rose, honeysuckle, barberry	<span style="color: blue;">■</span> Honeysuckle, bittersweet, buckthorn	<span style="color: teal;">■</span> Multiflora rose	<span style="color: lightgreen;">■</span> Common reed
<span style="color: teal;">■</span> Burning bush	<span style="color: green;">■</span> Glossy buckthorn	<span style="color: blue;">■</span> Garlic mustard	<span style="color: red;">■</span> Japanese barberry	<span style="color: brown;">■</span> Norway Maple	<span style="color: purple;">■</span> Wineberry
<span style="color: red;">■</span> Bittersweet		<span style="color: yellowgreen;">■</span> Honeysuckle	<span style="color: purple;">■</span> Catalpa tree	<span style="color: purple;">■</span> Porcelain berry, bittersweet, multiflora rose	
				<span style="color: red;">—</span> ROW	<span style="color: lightgreen;">—</span> LOW
				<span style="color: grey;">—</span> Tracks	<span style="color: blue;">—</span> Wetland
				<span style="color: yellow;">—</span> Sheet Boundary	

**SOLITUDE**  
LAKE MANAGEMENT

888.480.5253  
solitudelakemanagement.com



Esri Community Maps Contributors, MassGIS, © OpenStreetMap, Microsoft, Esri, HERE, Garmin, SafeGraph, GeoTechnologies, Inc, METI/NASA, USGS, EPA, NPS, US Census Bureau, USDA, Mawar, Microsoft

Sudbury DOT

0 15 30 60 Feet

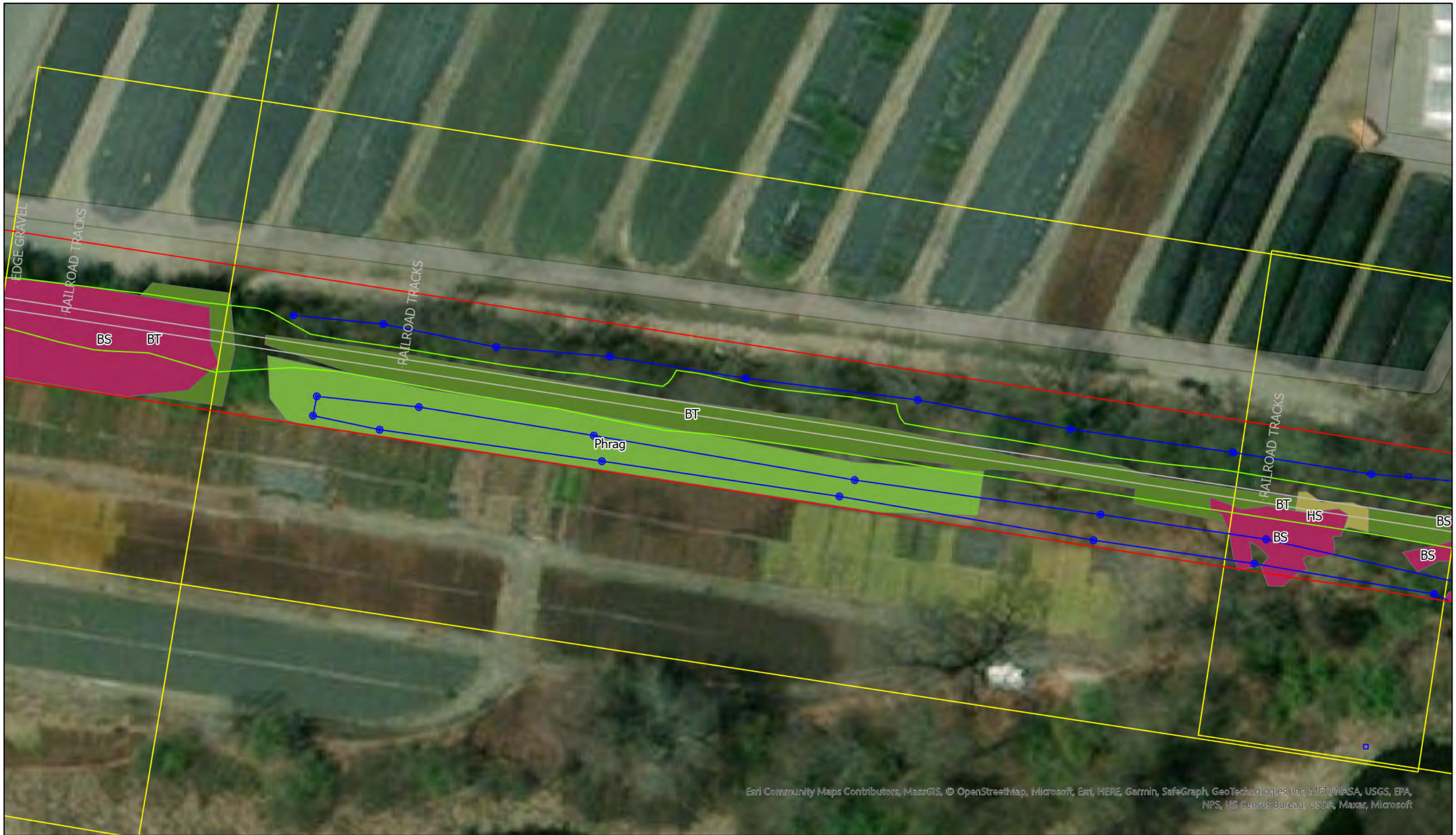
1:720

North Arrow

Legend					
<span style="color: blue;">■</span> Autumn olive	<span style="color: brown;">■</span> Bittersweet, wineberry, bittersweet, multiflora rose, burning bush	<span style="color: olive;">■</span> Buckthorn, multiflora rose, honeysuckle, barberry	<span style="color: blue;">■</span> Honeysuckle, bittersweet, buckthorn	<span style="color: green;">■</span> Multiflora rose	<span style="color: lightgreen;">■</span> Common reed
<span style="color: teal;">■</span> Burning bush	<span style="color: darkgreen;">■</span> Glossy buckthorn	<span style="color: blue;">■</span> Garlic mustard	<span style="color: red;">■</span> Japanese barberry	<span style="color: orange;">■</span> Norway Maple	<span style="color: purple;">■</span> Wineberry
<span style="color: magenta;">■</span> Bittersweet		<span style="color: olive;">■</span> Honeysuckle	<span style="color: pink;">■</span> Catalpa tree	<span style="color: purple;">■</span> Porcelain berry, bittersweet, multiflora rose	
				<span style="color: red;">—</span> ROW	<span style="color: lightgreen;">—</span> LOW
				<span style="color: grey;">—</span> Tracks	<span style="color: blue;">—</span> Wetland
				<span style="color: yellow;">—</span> Sheet Boundary	

**SOLITUDE**  
LAKE MANAGEMENT

888.480.5253  
solitudelakemanagement.com



Esri Community Maps Contributors, MassGIS, © OpenStreetMap, Microsoft, Esri, HERE, Garmin, SafeGraph, GeoTechnologies, Inc, METI/NASA, USGS, EPA, NPS, US Census Bureau, USDA, Maxar, Microsoft

Sudbury DOT

0 10 20 40 Feet

1:480

N

**Legend**

Autumn olive	Bittersweet, wineberry, bittersweet, multiflora rose, burning bush	Buckthorn, multiflora rose, honeysuckle, barberry	Honeysuckle, bittersweet, buckthorn	Multiflora rose	Common reed
Burning bush	Glossy buckthorn	Garlic mustard	Japanese barberry	Norway Maple	Wineberry
Bittersweet		Honeysuckle	Catalpa tree	Porcelain berry, bittersweet, multiflora rose	

ROW  
 LOW  
 Tracks  
 Wetland  
 Sheet Boundary

**SOLITUDE**  
LAKE MANAGEMENT

888.480.5253  
solitudelakemanagement.com



Esri Community Maps Contributors, MassGIS, © OpenStreetMap, Microsoft, Esri, HERE, Garmin, SafeGraph, GeoTechnologies, Inc, METI/NASA, USGS, EPA, NPS, US Census Bureau, USDA, Maxar, Microsoft

Sudbury DOT

0 10 20 40 Feet

1:480

N

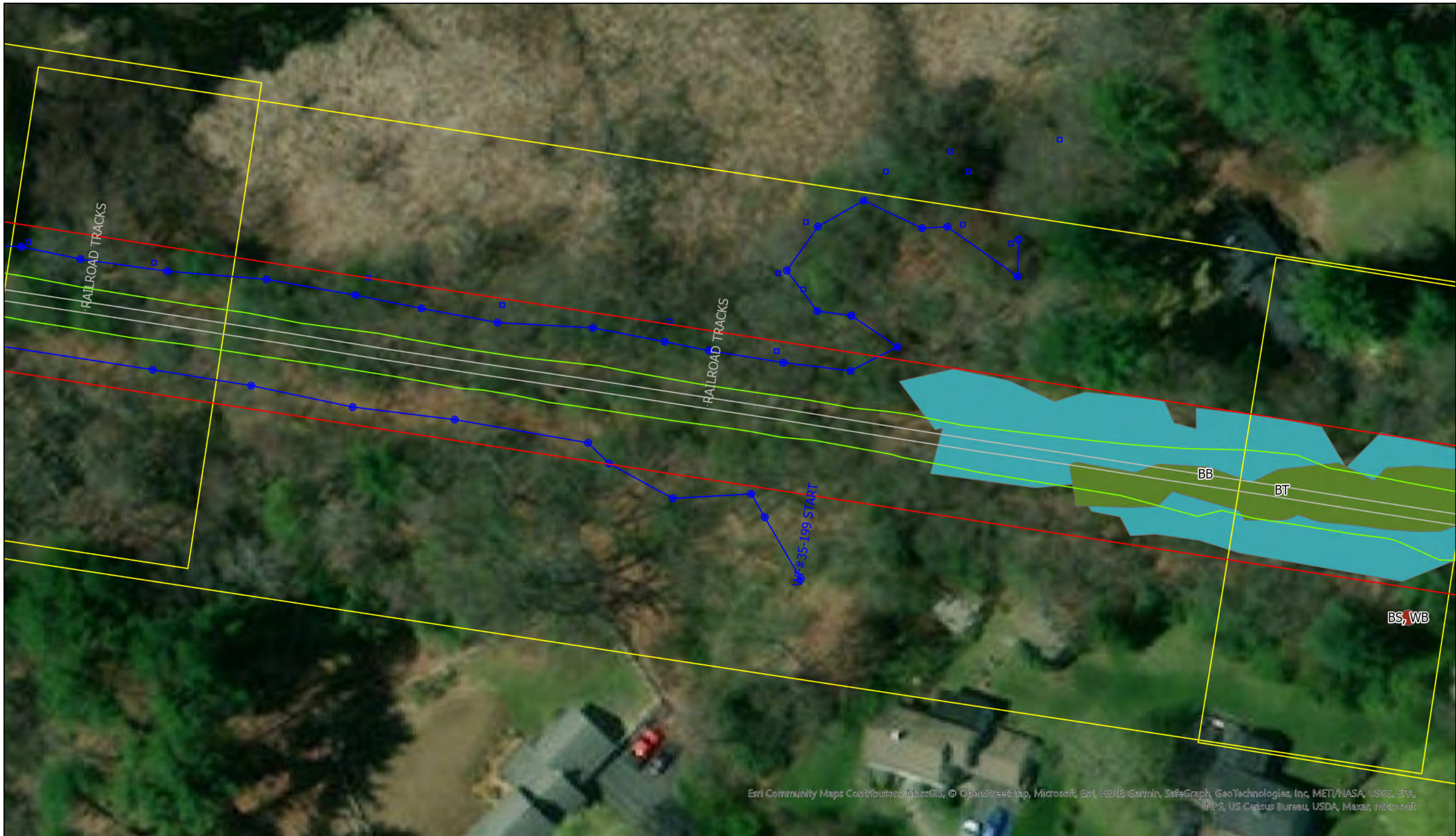
**Legend**

Autumn olive	Bittersweet, wineberry, bittersweet, multiflora rose, burning bush	Buckthorn, multiflora rose, honeysuckle, barberry	Honeysuckle, bittersweet, buckthorn	Multiflora rose	Common reed
Burning bush	Glossy buckthorn	Garlic mustard	Japanese barberry	Norway Maple	Wineberry
Bittersweet		Honeysuckle	Catalpa tree	Porcelain berry, bittersweet, multiflora rose	

ROW  
 LOW  
 Tracks  
 Wetland  
 Sheet Boundary

**SOLITUDE**  
LAKE MANAGEMENT

888.480.5253  
solitudelakemanagement.com



Esri Community Maps Contributors, MassGIS, © OpenStreetMap, Microsoft, Esri, HERE, Garmin, SafeGraph, GeoTechnologies, Inc, METI/NASA, USGS, EPA, NPS, US Census Bureau, USDA, Maxar, Microsoft

Sudbury DOT

0 10 20 40 Feet

1:480

North Arrow

**Legend**

Autumn olive	Bittersweet, wineberry, bittersweet, multiflora rose, burning bush	Buckthorn, multiflora rose, honeysuckle, barberry	Honeysuckle, bittersweet, buckthorn	Multiflora rose	Common reed
Burning bush	Glossy buckthorn	Garlic mustard	Japanese barberry	Norway Maple	Wineberry
Bittersweet		Honeysuckle	Catalpa tree	Porcelain berry, bittersweet, multiflora rose	

ROW  
 LOW  
 Tracks  
 Wetland  
 Sheet Boundary

**SOLITUDE**  
LAKE MANAGEMENT

888.480.5253  
solitudelakemanagement.com



Esri Community Maps Contributors, MassGIS, © OpenStreetMap, Microsoft, Esri, HERE, Garmin, SafeGraph, GeoTechnologies, Inc, METI/NASA, USGS, EPA, NPS, US Census Bureau, USDA, Maxar, Microsoft

Sudbury DOT

0 10 20 40 Feet

1:480

North Arrow

Legend					
<span style="color: blue;">■</span> Autumn olive	<span style="color: red;">■</span> Bittersweet, wineberry, bittersweet, multiflora rose, burning bush	<span style="color: yellow;">■</span> Buckthorn, multiflora rose, honeysuckle, barberry	<span style="color: blue;">■</span> Honeysuckle, bittersweet, buckthorn	<span style="color: green;">■</span> Multiflora rose	<span style="color: lightgreen;">■</span> Common reed
<span style="color: cyan;">■</span> Burning bush	<span style="color: darkgreen;">■</span> Glossy buckthorn	<span style="color: purple;">■</span> Garlic mustard	<span style="color: brown;">■</span> Japanese barberry	<span style="color: orange;">■</span> Norway Maple	<span style="color: magenta;">■</span> Wineberry
<span style="color: pink;">■</span> Bittersweet		<span style="color: olive;">■</span> Honeysuckle	<span style="color: purple;">■</span> Catalpa tree	<span style="color: purple;">■</span> Porcelain berry, bittersweet, multiflora rose	
				<span style="color: red;">—</span> ROW	<span style="color: lightgreen;">—</span> LOW
				<span style="color: grey;">—</span> Tracks	<span style="color: blue;">—</span> Wetland
				<span style="color: yellow;">—</span> Sheet Boundary	

**SOLITUDE**  
LAKE MANAGEMENT

888.480.5253  
solitudelakemanagement.com





Esri Community Maps Contributors, MassGIS, © OpenStreetMap, Microsoft, Esri, HERE, Garmin, SafeGraph, GeoTechnologies, Inc, METI/NASA, USGS, EPA, NPS, US Census Bureau, USDA, Maxar, Microsoft

Sudbury DOT

0 15 30 60 Feet

1:720

North Arrow

Legend					
Autumn olive	Bittersweet, wineberry, bittersweet, multiflora rose, burning bush	Buckthorn, multiflora rose, honeysuckle, barberry	Honeysuckle, bittersweet, buckthorn	Multiflora rose	Common reed
Burning bush	Glossy buckthorn	Garlic mustard	Japanese barberry	Norway Maple	Wineberry
Bittersweet		Honeysuckle	Catalpa tree	Porcelain berry, bittersweet, multiflora rose	
				ROW	LOW
				Tracks	Wetland
				Sheet Boundary	

**SOLITUDE**  
LAKE MANAGEMENT

888.480.5253  
solitudelakemanagement.com



Esri Community Maps Contributors, MassGIS, © OpenStreetMap, Microsoft, Esri, HERE, Garmin, SafeGraph, GeoTechnologies, Inc, METI/NASA, USGS, EPA, NPS, US Census Bureau, USDA, Maxar, Microsoft

Sudbury DOT

0 10 20 40 Feet

1:480

Legend					
Autumn olive	Bittersweet, wineberry, bittersweet, multiflora rose, burning bush	Buckthorn, multiflora rose, honeysuckle, barberry	Honeysuckle, bittersweet, buckthorn	Multiflora rose	Common reed
Burning bush	Glossy buckthorn	Garlic mustard	Japanese barberry	Norway Maple	Wineberry
Bittersweet		Honeysuckle	Catalpa tree	Porcelain berry, bittersweet, multiflora rose	
				ROW	LOW
				Tracks	Wetland
				Sheet Boundary	

**SOLITUDE**  
LAKE MANAGEMENT

888.480.5253  
solitudelakemanagement.com



Esri Community Maps Contributors, MassGIS, © OpenStreetMap, Microsoft, Esri, HERE, Garmin, SafeGraph, GeoTechnologies, Inc, METI/NASA, USGS, EPA, NPS, US Census Bureau, USDA, Maxar, Microsoft

Sudbury DOT

0 15 30 60 Feet

1:720

North Arrow

Legend					
Autumn olive	Bittersweet, wineberry, bittersweet, multiflora rose, burning bush	Buckthorn, multiflora rose, honeysuckle, barberry	Honeysuckle, bittersweet, buckthorn	Multiflora rose	Common reed
Burning bush	Glossy buckthorn	Garlic mustard	Japanese barberry	Norway Maple	Wineberry
Bittersweet		Honeysuckle	Catalpa tree	Porcelain berry, bittersweet, multiflora rose	
				ROW	LOW
				Tracks	Wetland
				Sheet Boundary	

**SOLITUDE**  
LAKE MANAGEMENT

888.480.5253  
solitudelakemanagement.com



Esri Community Maps Contributors, MassGIS, © OpenStreetMap, Microsoft, Esri, HERE, Garmin, SafeGraph, GeoTechnologies, Inc, METI/NASA, USGS, EPA, NPS, US Census Bureau, USDA, Maxar, Microsoft

Sudbury DOT

0 15 30 60 Feet

1:720

North Arrow

Legend					
<span style="color: blue;">■</span> Autumn olive	<span style="color: red;">■</span> Bittersweet, wineberry, bittersweet, multiflora rose, burning bush	<span style="color: yellow;">■</span> Buckthorn, multiflora rose, honeysuckle, barberry	<span style="color: blue;">■</span> Honeysuckle, bittersweet, buckthorn	<span style="color: orange;">■</span> Multiflora rose	<span style="color: lightgreen;">■</span> Common reed
<span style="color: teal;">■</span> Burning bush	<span style="color: green;">■</span> Glossy buckthorn	<span style="color: blue;">■</span> Garlic mustard	<span style="color: red;">■</span> Japanese barberry	<span style="color: brown;">■</span> Norway Maple	<span style="color: purple;">■</span> Wineberry
<span style="color: pink;">■</span> Bittersweet		<span style="color: yellow;">■</span> Honeysuckle	<span style="color: magenta;">■</span> Catalpa tree	<span style="color: purple;">■</span> Porcelain berry, bittersweet, multiflora rose	
				<span style="color: red;">—</span> ROW	<span style="color: green;">—</span> LOW
				<span style="color: grey;">—</span> Tracks	<span style="color: blue;">—</span> Wetland
				<span style="color: yellow;">—</span> Sheet Boundary	

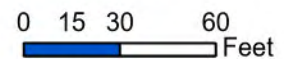
**SOLITUDE**  
LAKE MANAGEMENT

888.480.5253  
solitudelakemanagement.com



Esri Community Maps Contributors, MassGIS, © OpenStreetMap, Microsoft, Esri, HERE, Garmin, SafeGraph, GeoTechnologies, Inc, METI/NASA, USGS, EPA, NPS, US Census Bureau, USDA, Maxar, Microsoft

Sudbury DOT



1:720



**Legend**

- |              |  |   |                                     |   |             |
|--------------|--|---|-------------------------------------|---|-------------|
| Autumn olive | Bittersweet, wineberry, bittersweet, multiflora rose, burning bush | Buckthorn, multiflora rose, honeysuckle, barberry | Honeysuckle, bittersweet, buckthorn | Multiflora rose                               | Common reed |
| Burning bush | Glossy buckthorn   | Garlic mustard                                    | Japanese barberry                   | Norway Maple                                  | Wineberry   |
| Bittersweet  |  | Honeysuckle                                       | Catalpa tree                        | Porcelain berry, bittersweet, multiflora rose |             |

- ROW
- LOW
- Tracks
- Wetland
- Sheet Boundary

**SOLITUDE**  
LAKE MANAGEMENT  
888.480.5253  
solitudelakemanagement.com



Esri Community Maps Contributors, MassGIS, © OpenStreetMap, Microsoft, Esri, HERE, Garmin, SafeGraph, GeoTechnologies, Inc, METI, NASA, USGS, EPA, NPS, US Census Bureau, USDA, Maxar, Microsoft

Sudbury DOT

0 15 30 60 Feet

1:720

Legend					
Autumn olive	Bittersweet, wineberry, bittersweet, multiflora rose, burning bush	Buckthorn, multiflora rose, honeysuckle, barberry	Honeysuckle, bittersweet, buckthorn	Multiflora rose	Common reed
Burning bush	Glossy buckthorn	Garlic mustard	Japanese barberry	Norway Maple	Wineberry
Bittersweet		Honeysuckle	Catalpa tree	Porcelain berry, bittersweet, multiflora rose	
				ROW	LOW
				Tracks	Wetland
				Sheet Boundary	

**SOLITUDE**  
LAKE MANAGEMENT

888.480.5253  
solitudelakemanagement.com



Esri Community Maps Contributors, MassGIS, © OpenStreetMap, Microsoft, Esri, HERE, Garmin, SafeGraph, GeoTechnologies, Inc, METI/NASA, USGS, EPA, NPS, US Census Bureau, USDA, Maxar, Microsoft

Sudbury DOT

0 20 40 80 Feet

1:960

North Arrow

Legend					
<span style="color: blue;">■</span> Autumn olive	<span style="color: red;">■</span> Bittersweet, wineberry, bittersweet, multiflora rose, burning bush	<span style="color: yellow;">■</span> Buckthorn, multiflora rose, honeysuckle, barberry	<span style="color: blue;">■</span> Honeysuckle, bittersweet, buckthorn	<span style="color: green;">■</span> Multiflora rose	<span style="color: green;">■</span> Common reed
<span style="color: teal;">■</span> Burning bush	<span style="color: green;">■</span> Glossy buckthorn	<span style="color: blue;">■</span> Garlic mustard	<span style="color: red;">■</span> Japanese barberry	<span style="color: brown;">■</span> Norway Maple	<span style="color: purple;">■</span> Wineberry
<span style="color: red;">■</span> Bittersweet		<span style="color: yellow;">■</span> Honeysuckle	<span style="color: purple;">■</span> Catalpa tree	<span style="color: purple;">■</span> Porcelain berry, bittersweet, multiflora rose	
				<span style="color: red;">—</span> ROW	<span style="color: green;">—</span> LOW
				<span style="color: blue;">—</span> Tracks	<span style="color: blue;">—</span> Wetland
				<span style="color: yellow;">—</span> Sheet Boundary	

**SOLITUDE**  
LAKE MANAGEMENT

888.480.5253  
solitudelakemanagement.com



Sudbury DOT

0 10 20 40 Feet

1:480

▲ N

Legend					
Autumn olive	Bittersweet, wineberry, bittersweet, multiflora rose, burning bush	Buckthorn, multiflora rose, honeysuckle, barberry	Honeysuckle, bittersweet, buckthorn	Multiflora rose	Common reed
Burning bush	Glossy buckthorn	Garlic mustard	Japanese barberry	Norway Maple	Wineberry
Bittersweet		Honeysuckle	Catalpa tree	Porcelain berry, bittersweet, multiflora rose	
				ROW	LOW
				Tracks	Wetland
				Sheet Boundary	

**SOLITUDE**  
LAKE MANAGEMENT

888.480.5253  
solitudelakemanagement.com





Esri Community Maps Contributors, MassGIS, © OpenStreetMap, Microsoft, Esri, HERE, Garmin, SafeGraph, GeoTechnologies, Inc, METI/NASA, USGS, EPA, NPS, US Census Bureau, USDA, Maxar, Microsoft

Sudbury DOT

0 10 20 40 Feet

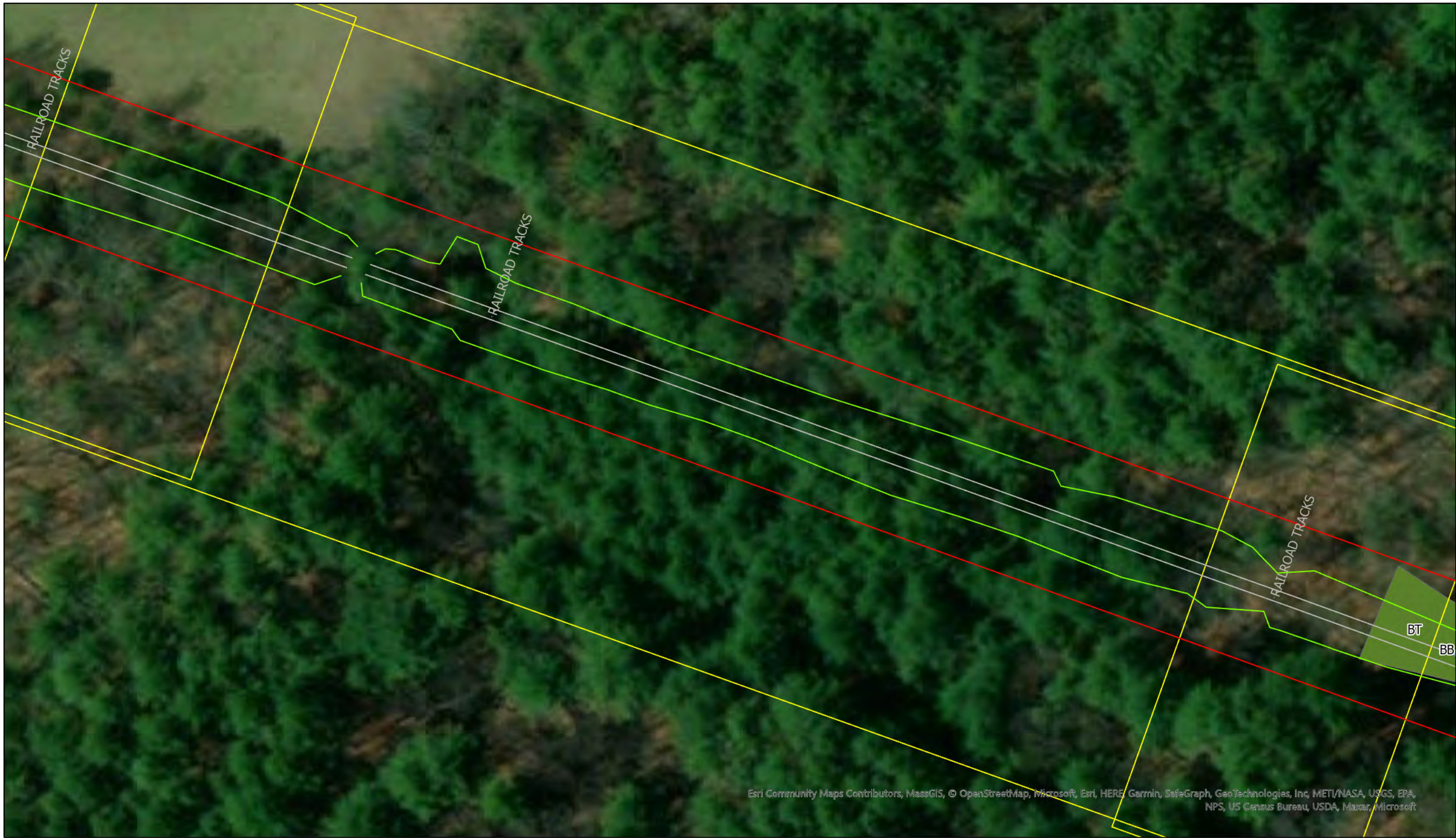
1:480

**Legend**

Autumn olive	Bittersweet, wineberry, bittersweet, multiflora rose, burning bush	Buckthorn, multiflora rose, honeysuckle, barberry	Honeysuckle, bittersweet, buckthorn	Multiflora rose	Common reed
Burning bush	Glossy buckthorn	Garlic mustard	Japanese barberry	Norway Maple	Wineberry
Bittersweet		Honeysuckle	Catalpa tree	Porcelain berry, bittersweet, multiflora rose	
				ROW	LOW
				Tracks	Wetland
				Sheet Boundary	

**SOLITUDE**  
LAKE MANAGEMENT

888.480.5253  
solitudelakemanagement.com



Esri Community Maps Contributors, MassGIS, © OpenStreetMap, Microsoft, Esri, HERE, Garmin, SafeGraph, GeoTechnologies, Inc, METI/NASA, USGS, EPA, NPS, US Census Bureau, USDA, Maxar, Microsoft

Sudbury DOT

0 10 20 40 Feet

1:480

**Legend**

Autumn olive	Bittersweet, wineberry, bittersweet, multiflora rose, burning bush	Buckthorn, multiflora rose, honeysuckle, barberry	Honeysuckle, bittersweet, buckthorn	Multiflora rose	Common reed
Burning bush	Glossy buckthorn	Garlic mustard	Japanese barberry	Norway Maple	Wineberry
Bittersweet		Honeysuckle	Catalpa tree	Porcelain berry, bittersweet, multiflora rose	

ROW  
 LOW  
 Tracks  
 Wetland  
 Sheet Boundary

**SOLITUDE**  
LAKE MANAGEMENT

888.480.5253  
solitudelakemanagement.com



Esri Community Maps Contributors, MassGIS, © OpenStreetMap, Microsoft, Esri, HERE, Garmin, SafeGraph, GeoTechnologies, Inc, METI/NASA, USGS, EPA, NPS, US Census Bureau, USDA, Maxar, Microsoft

Sudbury DOT

0 10 20 40 Feet

1:480

North Arrow

Legend					
Autumn olive	Bittersweet, wineberry, bittersweet, multiflora rose, burning bush	Buckthorn, multiflora rose, honeysuckle, barberry	Honeysuckle, bittersweet, buckthorn	Multiflora rose	Common reed
Burning bush	Glossy buckthorn	Garlic mustard	Japanese barberry	Norway Maple	Wineberry
Bittersweet		Honeysuckle	Catalpa tree	Porcelain berry, bittersweet, multiflora rose	
				ROW	LOW
				Tracks	Wetland
				Sheet Boundary	

**SOLITUDE**  
LAKE MANAGEMENT

888.480.5253  
solitudelakemanagement.com



Esri Community Maps Contributors, MassGIS, © OpenStreetMap, Microsoft, Esri, HERE, Garmin, SafeGraph, GeoTechnologies, Inc, METI/NASA, USGS, EPA, NPS, US Census Bureau, USDA, Maxar, Microsoft

Sudbury DOT

0 10 20 40 Feet

1:480

North Arrow (N)

Legend					
Autumn olive	Bittersweet, wineberry, bittersweet, multiflora rose, burning bush	Buckthorn, multiflora rose, honeysuckle, barberry	Honeysuckle, bittersweet, buckthorn	Multiflora rose	Common reed
Burning bush	Glossy buckthorn	Garlic mustard	Japanese barberry	Norway Maple	Wineberry
Bittersweet		Honeysuckle	Catalpa tree	Porcelain berry, bittersweet, multiflora rose	
				ROW	LOW
				Tracks	Wetland
				Sheet Boundary	

**SOLITUDE**  
LAKE MANAGEMENT

888.480.5253  
solitudelakemanagement.com



Esri Community Maps Contributors, MassGIS, © OpenStreetMap, Microsoft, Esri, HERE, Garmin, SafeGraph, GeoTechnologies, Inc, METI/NASA, USGS, EPA, NPS, US Census Bureau, USDA, Maxar, Microsoft

Sudbury DOT

0 10 20 40 Feet

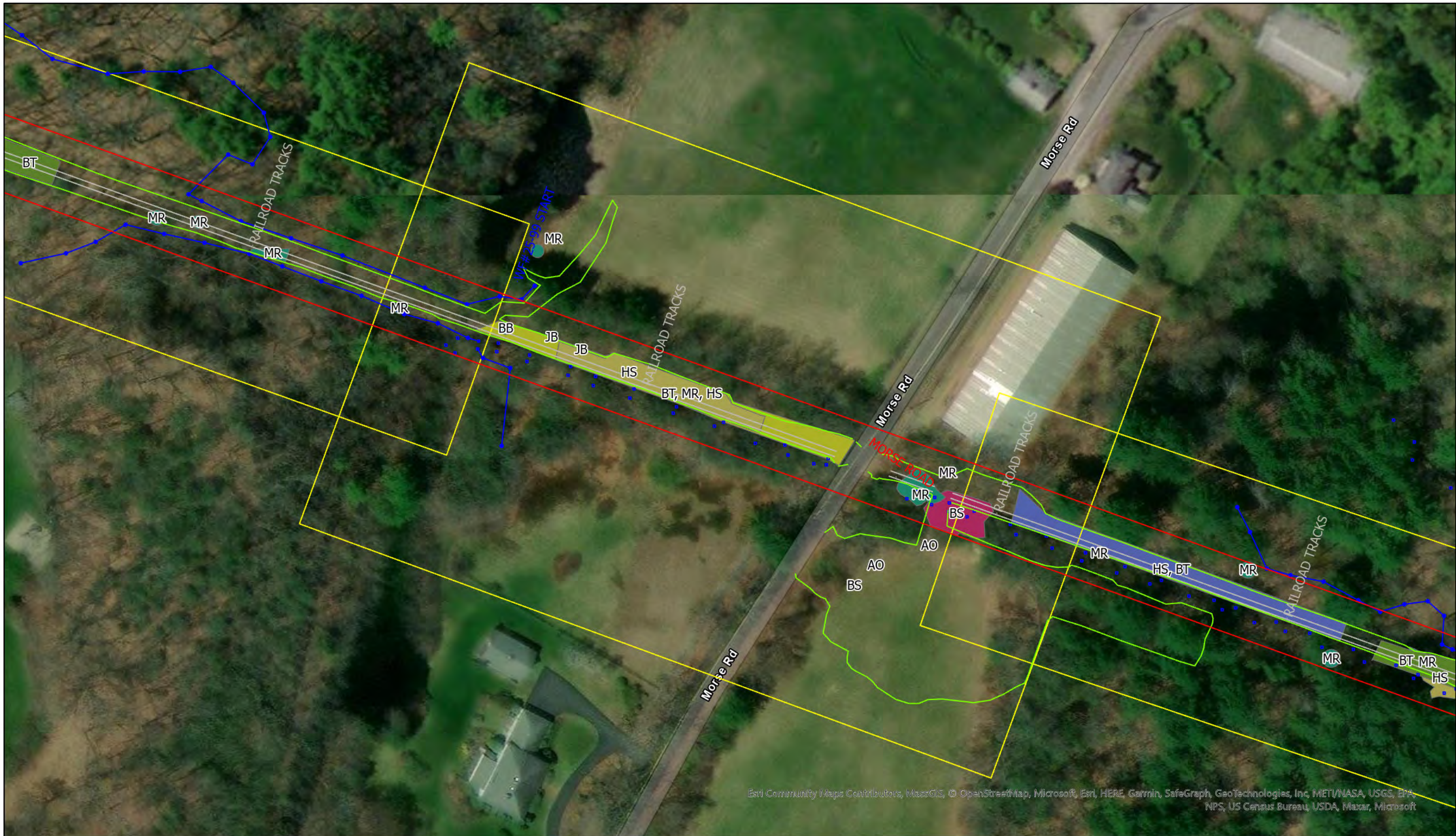
1:480

N

Legend					
Autumn olive	Bittersweet, wineberry, bittersweet, multiflora rose, burning bush	Buckthorn, multiflora rose, honeysuckle, barberry	Honeysuckle, bittersweet, buckthorn	Multiflora rose	Common reed
Burning bush	Glossy buckthorn	Garlic mustard	Japanese barberry	Norway Maple	Wineberry
Bittersweet		Honeysuckle	Catalpa tree	Porcelain berry, bittersweet, multiflora rose	
				ROW	LOW
				Tracks	Wetland
				Sheet Boundary	

**SOLITUDE**  
LAKE MANAGEMENT

888.480.5253  
solitudelakemanagement.com



Esri Community Maps Contributors, MassGIS, © OpenStreetMap, Microsoft, Esri, HERE, Garmin, SafeGraph, GeoTechnologies, Inc, METI/NASA, USGS, EPA, NPS, US Census Bureau, USDA, Maxar, Microsoft

Sudbury DOT

0 20 40 80 Feet

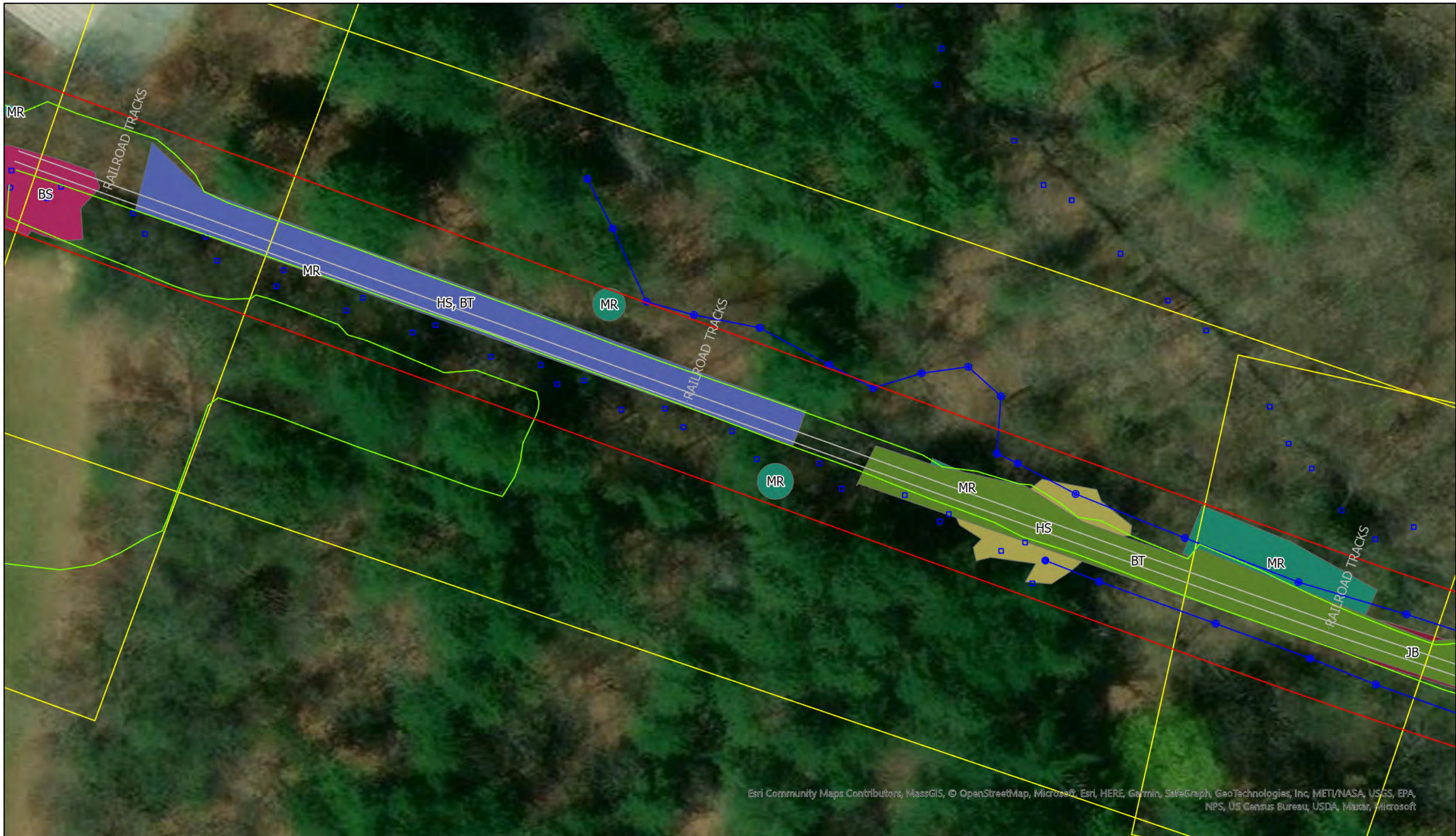
1:960

North Arrow

Legend					
Autumn olive	Bittersweet, wineberry, bittersweet, multiflora rose, burning bush	Buckthorn, multiflora rose, honeysuckle, barberry	Honeysuckle, bittersweet, buckthorn	Multiflora rose	Common reed
Burning bush	Glossy buckthorn	Garlic mustard	Japanese barberry	Norway Maple	Wineberry
Bittersweet		Honeysuckle	Catalpa tree	Porcelain berry, bittersweet, multiflora rose	
				ROW	LOW
				Tracks	Wetland
				Sheet Boundary	

**SOLITUDE**  
LAKE MANAGEMENT

888.480.5253  
solitudelakemanagement.com



Esri Community Maps Contributors, MassGIS, © OpenStreetMap, Microsoft, Esri, HERE, Garmin, SafeGraph, GeoTechnologies, Inc, METI/NASA, USGS, EPA, NPS, US Census Bureau, USDA, Maxar, Microsoft

Sudbury DOT

0 10 20 40 Feet

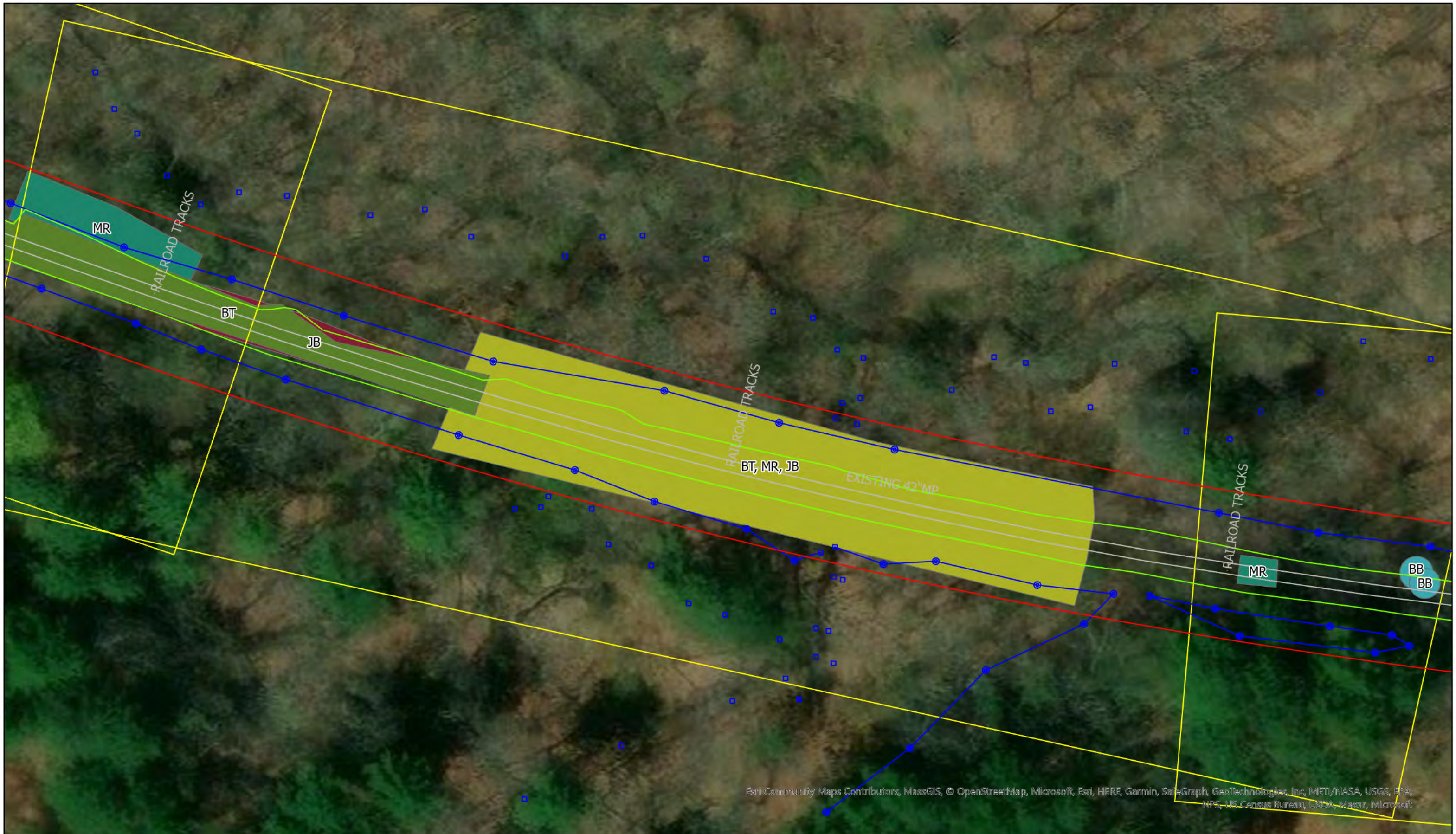
1:480

North Arrow

Legend					
Autumn olive	Bittersweet, wineberry, bittersweet, multiflora rose, burning bush	Buckthorn, multiflora rose, honeysuckle, barberry	Honeysuckle, bittersweet, buckthorn	Multiflora rose	Common reed
Burning bush	Glossy buckthorn	Garlic mustard	Japanese barberry	Norway Maple	Wineberry
Bittersweet		Honeysuckle	Catalpa tree	Porcelain berry, bittersweet, multiflora rose	
				ROW	LOW
				Tracks	Wetland
				Sheet Boundary	

**SOLITUDE**  
LAKE MANAGEMENT

888.480.5253  
solitudelakemanagement.com



Esri Community Maps Contributors, MassGIS, © OpenStreetMap, Microsoft, Esri, HERE, Garmin, SafeGraph, GeoTechnologies, Inc, METI/NASA, USGS, EPA, NPS, US Census Bureau, USDA, Maxar, Microsoft

Sudbury DOT

0 10 20 40 Feet

1:480

N

**Legend**

Autumn olive	Bittersweet, wineberry, bittersweet, multiflora rose, burning bush	Buckthorn, multiflora rose, honeysuckle, barberry	Honeysuckle, bittersweet, buckthorn	Multiflora rose	Common reed
Burning bush	Glossy buckthorn	Garlic mustard	Japanese barberry	Norway Maple	Wineberry
Bittersweet		Honeysuckle	Catalpa tree	Porcelain berry, bittersweet, multiflora rose	

ROW  
 LOW  
 Tracks  
 Wetland  
 Sheet Boundary

**SOLITUDE**  
LAKE MANAGEMENT

888.480.5253  
solitudelakemanagement.com





Esri Community Maps Contributors, MassGIS, © OpenStreetMap, Microsoft, Esri, HERE, Garmin, SafeGraph, GeoTechnologies, Inc, METI/NASA, USGS, EPA, NPS, US Census Bureau, USDA, Maxar, Microsoft

Sudbury DOT

0 10 20 40 Feet

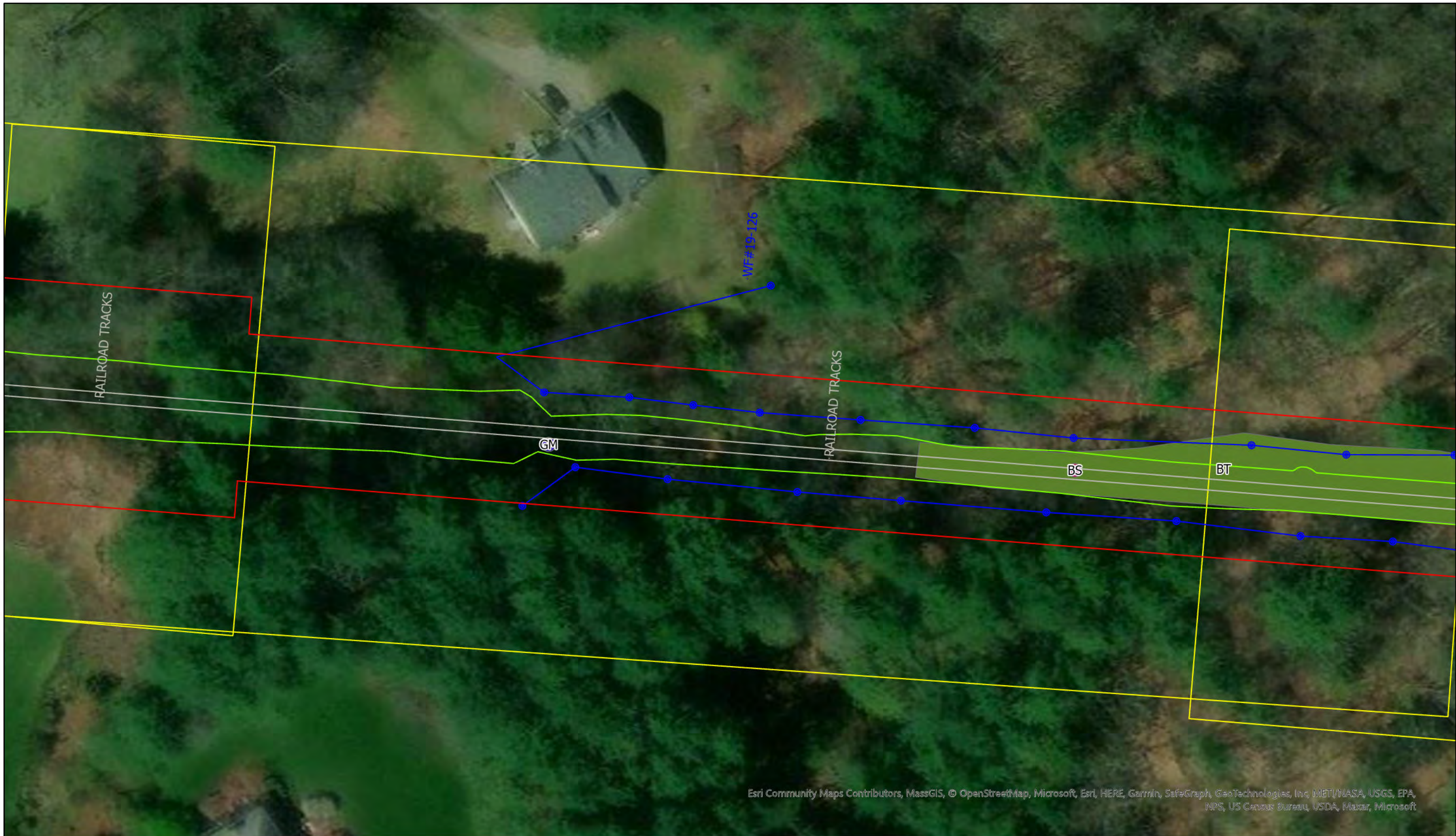
1:480

North Arrow

Legend					
Autumn olive	Bittersweet, wineberry, bittersweet, multiflora rose, burning bush	Buckthorn, multiflora rose, honeysuckle, barberry	Honeysuckle, bittersweet, buckthorn	Multiflora rose	Common reed
Burning bush	Glossy buckthorn	Garlic mustard	Japanese barberry	Norway Maple	Wineberry
Bittersweet		Honeysuckle	Catalpa tree	Porcelain berry, bittersweet, multiflora rose	
				ROW	LOW
				Tracks	Wetland
				Sheet Boundary	

**SOLITUDE**  
LAKE MANAGEMENT

888.480.5253  
solitudelakemanagement.com



Esri Community Maps Contributors, MassGIS, © OpenStreetMap, Microsoft, Esri, HERE, Garmin, SafeGraph, GeoTechnologies, Inc, METI/NASA, USGS, EPA, NPS, US Census Bureau, USDA, Maxar, Microsoft

Sudbury DOT

0 10 20 40 Feet

1:480

North Arrow

**Legend**

<span style="color: blue;">■</span> Autumn olive	<span style="color: red;">■</span> Bittersweet, wineberry, bittersweet, multiflora rose, burning bush	<span style="color: olive;">■</span> Buckthorn, multiflora rose, honeysuckle, barberry	<span style="color: blue;">■</span> Honeysuckle, bittersweet, buckthorn	<span style="color: green;">■</span> Multiflora rose	<span style="color: purple;">■</span> Common reed
<span style="color: teal;">■</span> Burning bush	<span style="color: green;">■</span> Glossy buckthorn	<span style="color: blue;">■</span> Garlic mustard	<span style="color: red;">■</span> Japanese barberry	<span style="color: brown;">■</span> Norway Maple	<span style="color: purple;">■</span> Wineberry
<span style="color: red;">■</span> Bittersweet		<span style="color: olive;">■</span> Honeysuckle	<span style="color: purple;">■</span> Catalpa tree	<span style="color: purple;">■</span> Porcelain berry, bittersweet, multiflora rose	

— ROW  
— LOW  
— Tracks  
— Wetland  
— Sheet Boundary

**SOLITUDE**  
LAKE MANAGEMENT

888.480.5253  
solitudelakemanagement.com



Esri Community Maps Contributors, MassGIS, © OpenStreetMap, Microsoft, Esri, HERE, Garmin, SafeGraph, GeoTechnologies, Inc, METI/NASA, USGS, EPA, NPS, US Census Bureau, USDA, Maxar, Microsoft

Sudbury DOT

0 10 20 40 Feet

1:480

North Arrow

**Legend**

Autumn olive	Bittersweet, wineberry, bittersweet, multiflora rose, burning bush	Buckthorn, multiflora rose, honeysuckle, barberry	Honeysuckle, bittersweet, buckthorn	Multiflora rose	Common reed
Burning bush	Glossy buckthorn	Garlic mustard	Japanese barberry	Norway Maple	Wineberry
Bittersweet		Honeysuckle	Catalpa tree	Porcelain berry, bittersweet, multiflora rose	

ROW  
 LOW  
 Tracks  
 Wetland  
 Sheet Boundary

**SOLITUDE**  
LAKE MANAGEMENT

888.480.5253  
solitudelakemanagement.com



Esri Community Maps Contributors, MassGIS, © OpenStreetMap, Microsoft, Esri, HERE, Garmin, SafeGraph, GeoTechnologies, Inc, METI/NASA, USGS, EPA, NPS, US Census Bureau, USDA, Maxar, Microsoft

Sudbury DOT

0 10 20 40 Feet

1:480

N

Legend					
Autumn olive	Bittersweet, wineberry, bittersweet, multiflora rose, burning bush	Buckthorn, multiflora rose, honeysuckle, barberry	Honeysuckle, bittersweet, buckthorn	Multiflora rose	Common reed
Burning bush	Glossy buckthorn	Garlic mustard	Japanese barberry	Norway Maple	Wineberry
Bittersweet		Honeysuckle	Catalpa tree	Porcelain berry, bittersweet, multiflora rose	
				ROW	LOW
				Tracks	Wetland
				Sheet Boundary	

**SOLITUDE**  
LAKE MANAGEMENT

888.480.5253  
solitudelakemanagement.com



Esri Community Maps Contributors, MassGIS, © OpenStreetMap, Microsoft, Esri, HERE, Garmin, SafeGraph, GeoTechnologies, Inc, METI/NASA, USGS, EPA, NPS, US Census Bureau, USDA, Maxar, Microsoft

Sudbury DOT

0 10 20 40 Feet

1:480

**Legend**

Autumn olive	Bittersweet, wineberry, bittersweet, multiflora rose, burning bush	Buckthorn, multiflora rose, honeysuckle, barberry	Honeysuckle, bittersweet, buckthorn	Multiflora rose	Common reed
Burning bush	Glossy buckthorn	Garlic mustard	Japanese barberry	Norway Maple	Wineberry
Bittersweet		Honeysuckle	Catalpa tree	Porcelain berry, bittersweet, multiflora rose	

ROW  
 LOW  
 Tracks  
 Wetland  
 Sheet Boundary

**SOLITUDE**  
LAKE MANAGEMENT

888.480.5253  
solitudelakemanagement.com



Esri Community Maps Contributors, MassGIS, © OpenStreetMap, Microsoft, Esri, HERE, Garmin, SafeGraph, GeoTechnologies, Inc, METI/NASA, USGS, EPA, NPS, US Census Bureau, USDA, Maxar, Microsoft

Sudbury DOT

0 10 20 40 Feet

1:480

**Legend**

Autumn olive	Bittersweet, wineberry, bittersweet, multiflora rose, burning bush	Buckthorn, multiflora rose, honeysuckle, barberry	Honeysuckle, bittersweet, buckthorn	Multiflora rose	Common reed
Burning bush	Glossy buckthorn	Garlic mustard	Japanese barberry	Norway Maple	Wineberry
Bittersweet		Honeysuckle	Catalpa tree	Porcelain berry, bittersweet, multiflora rose	
				ROW	LOW
				Tracks	Wetland
				Sheet Boundary	

**SOLITUDE**  
LAKE MANAGEMENT

888.480.5253  
solitudelakemanagement.com



Esri Community Maps Contributors, MassGIS, © OpenStreetMap, Microsoft, Esri, HERE, Garmin, SafeGraph, GeoTechnologies, Inc, METI/NASA, USGS, EPA, NPS, US Census Bureau, USDA, Maxar, Microsoft

Sudbury DOT

0 10 20 40 Feet

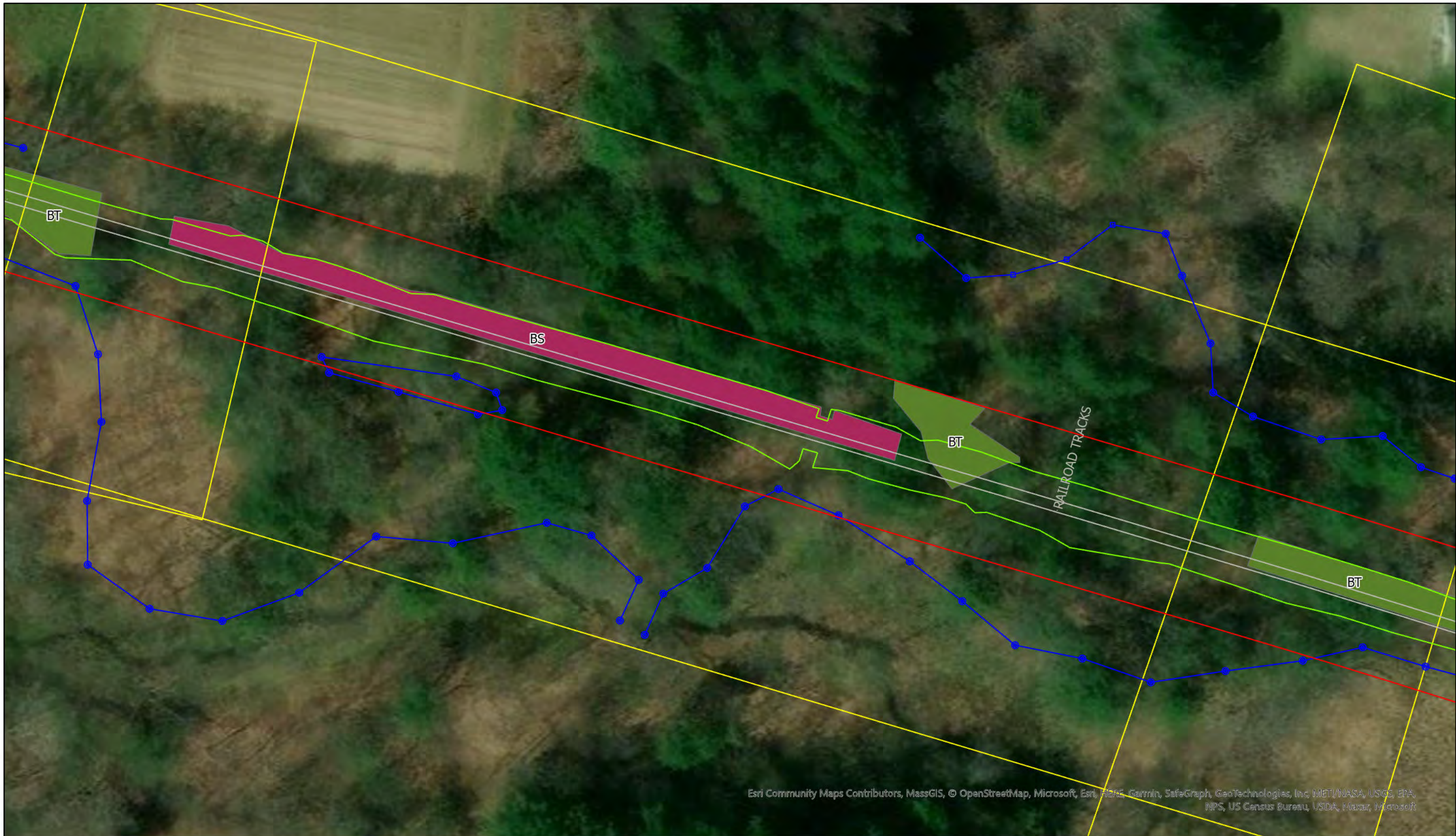
1:480

N

Legend					
Autumn olive	Bittersweet, wineberry, bittersweet, multiflora rose, burning bush	Buckthorn, multiflora rose, honeysuckle, barberry	Honeysuckle, bittersweet, buckthorn	Multiflora rose	Common reed
Burning bush	Glossy buckthorn	Garlic mustard	Japanese barberry	Norway Maple	Wineberry
Bittersweet		Honeysuckle	Catalpa tree	Porcelain berry, bittersweet, multiflora rose	
				ROW	LOW
				Tracks	Wetland
				Sheet Boundary	

**SOLITUDE**  
LAKE MANAGEMENT

888.480.5253  
solitudelakemanagement.com



Esri Community Maps Contributors, MassGIS, © OpenStreetMap, Microsoft, Esri, HERE, Garmin, SafeGraph, GeoTechnologies, Inc, METI/NASA, USGS, EPA, NPS, US Census Bureau, USDA, Maxar, Microsoft

Sudbury DOT

0 10 20 40 Feet

1:480

North Arrow

### Legend

<span style="color: blue;">■</span> Autumn olive	<span style="color: red;">■</span> Bittersweet, wineberry, bittersweet, multiflora rose, burning bush	<span style="color: yellow;">■</span> Buckthorn, multiflora rose, honeysuckle, barberry	<span style="color: blue;">■</span> Honeysuckle, bittersweet, buckthorn	<span style="color: green;">■</span> Multiflora rose	<span style="color: lightgreen;">■</span> Common reed
<span style="color: teal;">■</span> Burning bush	<span style="color: darkgreen;">■</span> Glossy buckthorn	<span style="color: blue;">■</span> Garlic mustard	<span style="color: darkred;">■</span> Japanese barberry	<span style="color: brown;">■</span> Norway Maple	<span style="color: purple;">■</span> Wineberry
<span style="color: magenta;">■</span> Bittersweet		<span style="color: olive;">■</span> Honeysuckle	<span style="color: pink;">■</span> Catalpa tree	<span style="color: purple;">■</span> Porcelain berry, bittersweet, multiflora rose	

<span style="color: red;">—</span> ROW	<span style="color: lightgreen;">—</span> LOW	<span style="color: grey;">—</span> Tracks	<span style="color: blue;">—</span> Wetland	<span style="color: yellow;">—</span> Sheet Boundary
--	---	--	---	--

**SOLITUDE**  
LAKE MANAGEMENT

888.480.5253  
solitudelakemanagement.com





Esri Community Maps Contributors, MassGIS, © OpenStreetMap, Microsoft, Esri, HERE, Garmin, SafeGraph, GeoTechnologies, Inc, METI/NASA, USGS, EPA, NPS, US Census Bureau, USDA, Maxar, Microsoft

Sudbury DOT

0 20 40 80 Feet

1:960

North Arrow

Legend					
<span style="color: blue;">■</span> Autumn olive	<span style="color: red;">■</span> Bittersweet, wineberry, bittersweet, multiflora rose, burning bush	<span style="color: yellow;">■</span> Buckthorn, multiflora rose, honeysuckle, barberry	<span style="color: blue;">■</span> Honeysuckle, bittersweet, buckthorn	<span style="color: green;">■</span> Multiflora rose	<span style="color: green;">■</span> Common reed
<span style="color: teal;">■</span> Burning bush	<span style="color: green;">■</span> Glossy buckthorn	<span style="color: blue;">■</span> Garlic mustard	<span style="color: red;">■</span> Japanese barberry	<span style="color: brown;">■</span> Norway Maple	<span style="color: purple;">■</span> Wineberry
<span style="color: pink;">■</span> Bittersweet		<span style="color: yellow-green;">■</span> Honeysuckle	<span style="color: purple;">■</span> Catalpa tree	<span style="color: purple;">■</span> Porcelain berry, bittersweet, multiflora rose	
				<span style="color: red;">—</span> ROW	<span style="color: green;">—</span> LOW
				<span style="color: grey;">—</span> Tracks	<span style="color: blue;">—</span> Wetland
				<span style="color: yellow;">—</span> Sheet Boundary	

**SOLITUDE**  
LAKE MANAGEMENT

888.480.5253  
solitudelakemanagement.com



Esri Community Maps Contributors, MassGIS, © OpenStreetMap, Microsoft, Esri, HERE, Garmin, SafeGraph, GeoTechnologies, Inc, METI/NASA, USGS, EPA, NPS, US Census Bureau, USDA, Maxar, Microsoft

Sudbury DOT

0 10 20 40 Feet

1:480

Legend					
Autumn olive	Bittersweet, wineberry, bittersweet, multiflora rose, burning bush	Buckthorn, multiflora rose, honeysuckle, barberry	Honeysuckle, bittersweet, buckthorn	Multiflora rose	Common reed
Burning bush	Glossy buckthorn	Garlic mustard	Japanese barberry	Norway Maple	Wineberry
Bittersweet		Honeysuckle	Catalpa tree	Porcelain berry, bittersweet, multiflora rose	
				ROW	LOW
				Tracks	Wetland
				Sheet Boundary	

888.480.5253  
solitudelakemanagement.com



Esri Community Maps Contributors, MassGIS, © OpenStreetMap, Microsoft, Esri, HERE, Garmin, SafeGraph, GeoTechnologies, Inc, METI/NASA, USGS, EPA, NPS, US Census Bureau, USDA, Maxar, Microsoft

Sudbury DOT

0 20 40 80 Feet

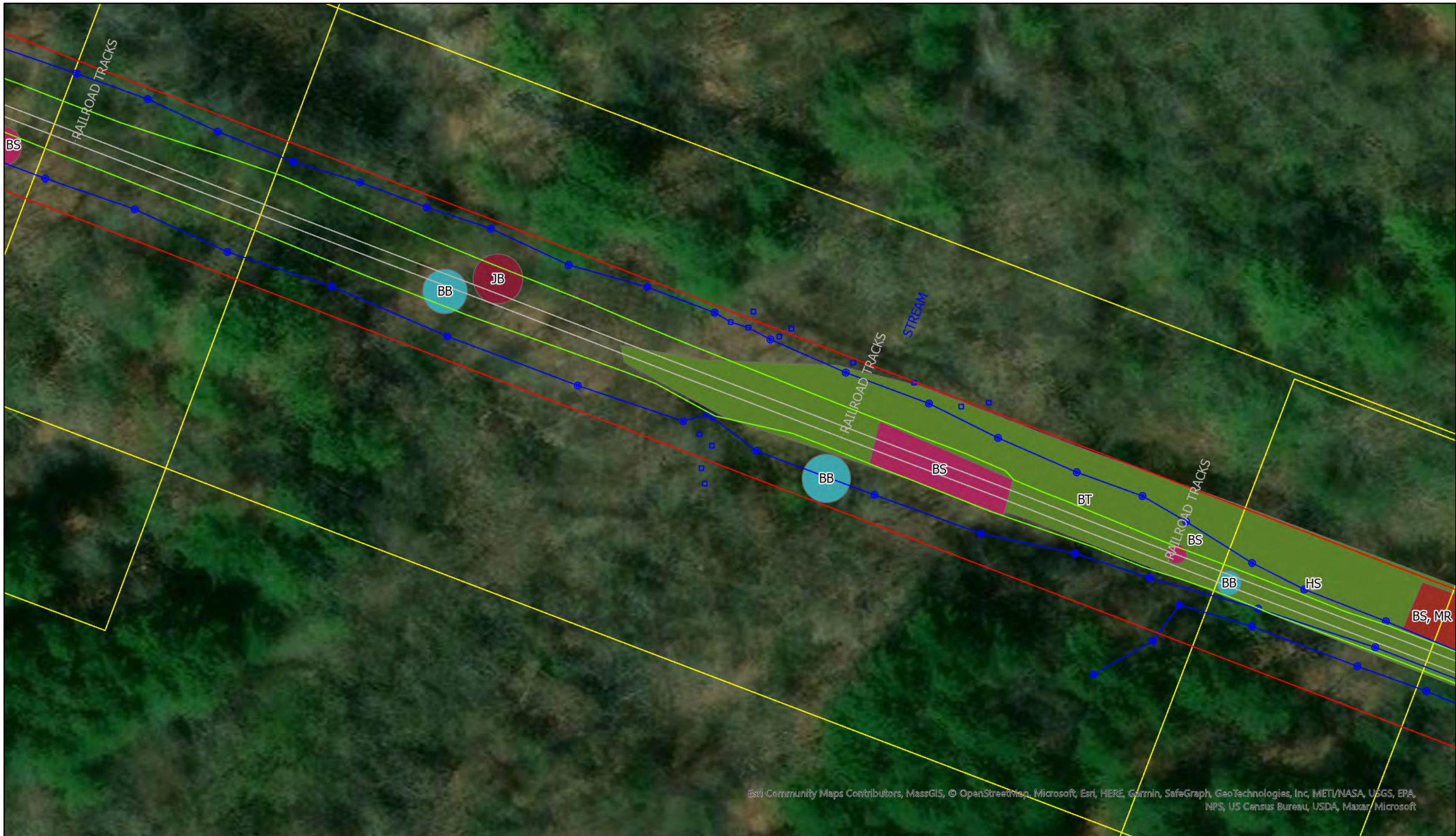
1:960

North Arrow

Legend					
<span style="color: blue;">■</span> Autumn olive	<span style="color: red;">■</span> Bittersweet, wineberry, bittersweet, multiflora rose, burning bush	<span style="color: olive;">■</span> Buckthorn, multiflora rose, honeysuckle, barberry	<span style="color: blue;">■</span> Honeysuckle, bittersweet, buckthorn	<span style="color: green;">■</span> Multiflora rose	<span style="color: lightgreen;">■</span> Common reed
<span style="color: teal;">■</span> Burning bush	<span style="color: darkgreen;">■</span> Glossy buckthorn	<span style="color: blue;">■</span> Garlic mustard	<span style="color: darkred;">■</span> Japanese barberry	<span style="color: brown;">■</span> Norway Maple	<span style="color: purple;">■</span> Wineberry
<span style="color: maroon;">■</span> Bittersweet		<span style="color: olive;">■</span> Honeysuckle	<span style="color: pink;">■</span> Catalpa tree	<span style="color: purple;">■</span> Porcelain berry, bittersweet, multiflora rose	
				<span style="color: red;">—</span> ROW	<span style="color: lightgreen;">—</span> LOW
				<span style="color: grey;">—</span> Tracks	<span style="color: blue;">—</span> Wetland
				<span style="color: yellow;">—</span> Sheet Boundary	

**SOLITUDE**  
LAKE MANAGEMENT

888.480.5253  
solitudelakemanagement.com



Esri Community Maps Contributors, MassGIS, © OpenStreetMap, Microsoft, Esri, HERE, Garmin, SafeGraph, GeoTechnologies, Inc, METI/NASA, USGS, EPA, NPS, US Census Bureau, USDA, Maxar, Microsoft

Sudbury DOT

0 10 20 40 Feet

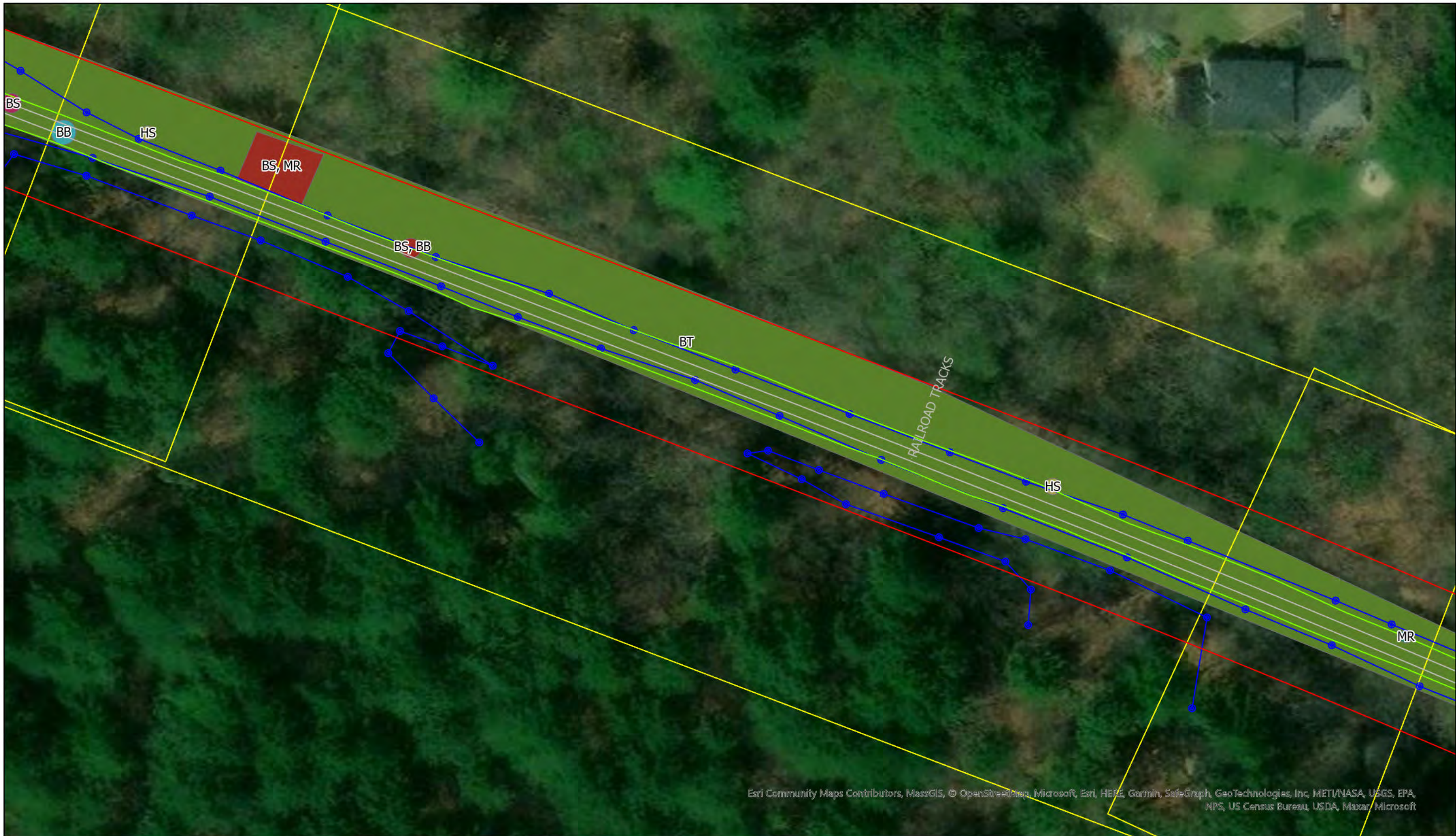
1:480

North Arrow

Legend					
Autumn olive	Bittersweet, wineberry, bittersweet, multiflora rose, burning bush	Buckthorn, multiflora rose, honeysuckle, barberry	Honeysuckle, bittersweet, buckthorn	Multiflora rose	Common reed
Burning bush	Glossy buckthorn	Garlic mustard	Japanese barberry	Norway Maple	Wineberry
Bittersweet		Honeysuckle	Catalpa tree	Porcelain berry, bittersweet, multiflora rose	
				ROW	LOW
				Tracks	Wetland
				Sheet Boundary	

**SOLITUDE**  
LAKE MANAGEMENT

888.480.5253  
solitudelakemanagement.com



Esri Community Maps Contributors, MassGIS, © OpenStreetMap, Microsoft, Esri, HERE, Garmin, SafeGraph, GeoTechnologies, Inc, METI/NASA, USGS, EPA, NPS, US Census Bureau, USDA, Maxar, Microsoft

Sudbury DOT

0 10 20 40 Feet

1:480

North Arrow

Legend					
Autumn olive	Bittersweet, wineberry, bittersweet, multiflora rose, burning bush	Buckthorn, multiflora rose, honeysuckle, barberry	Honeysuckle, bittersweet, buckthorn	Multiflora rose	Common reed
Burning bush	Glossy buckthorn	Garlic mustard	Japanese barberry	Norway Maple	Wineberry
Bittersweet		Honeysuckle	Catalpa tree	Porcelain berry, bittersweet, multiflora rose	
				ROW	LOW
				Tracks	Wetland
				Sheet Boundary	

**SOLITUDE**  
LAKE MANAGEMENT

888.480.5253  
solitudelakemanagement.com



Esri Community Maps Contributors, MassGIS, © OpenStreetMap, Microsoft, Esri, HERE, Garmin, SafeGraph, GeoTechnologies, Inc, METI/NASA, USGS, EPA, NPS, US Census Bureau, USDA, Maxar, Microsoft

Sudbury DOT

0 15 30 60 Feet

1:720

North Arrow

Legend					
Autumn olive	Bittersweet, wineberry, bittersweet, multiflora rose, burning bush	Buckthorn, multiflora rose, honeysuckle, barberry	Honeysuckle, bittersweet, buckthorn	Multiflora rose	Common reed
Burning bush	Glossy buckthorn	Garlic mustard	Japanese barberry	Norway Maple	Wineberry
Bittersweet		Honeysuckle	Catalpa tree	Porcelain berry, bittersweet, multiflora rose	
				ROW	LOW
				Tracks	Wetland
				Sheet Boundary	

**SOLITUDE**  
LAKE MANAGEMENT

888.480.5253  
solitudelakemanagement.com



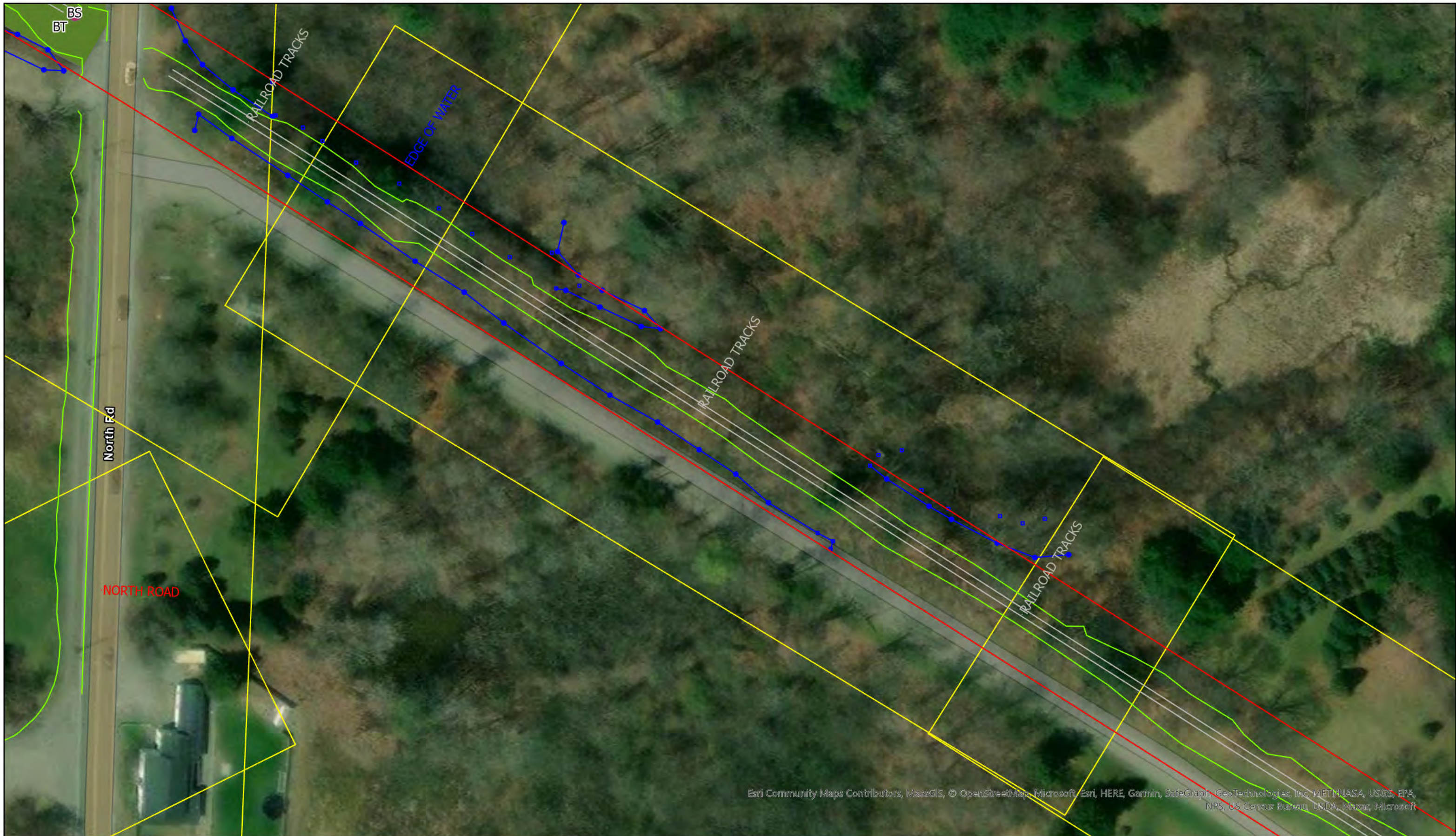
Esri Community Maps Contributors, MassGIS, © OpenStreetMap, Microsoft, Esri, HERE, Garmin, SafeGraph, GeoTechnologies, Inc, DEERUNASA, USGS, EPA, NPS, US Census Bureau, USDA, Maxar, Microsoft

Sudbury DOT  
 0 20 40 80 Feet  
 1:960



Legend					
Autumn olive	Bittersweet, wineberry, bittersweet, multiflora rose, burning bush	Buckthorn, multiflora rose, honeysuckle, barberry	Honeysuckle, bittersweet, buckthorn	Multiflora rose	Common reed
Burning bush	Glossy buckthorn	Garlic mustard	Japanese barberry	Norway Maple	Wineberry
Bittersweet		Honeysuckle	Catalpa tree	Porcelain berry, bittersweet, multiflora rose	

ROW
LOW
Tracks
Wetland
Sheet Boundary



Esri Community Maps Contributors, MassGIS, © OpenStreetMap, Microsoft, Esri, HERE, Garmin, SafeGraph, GeoTechnologies, Inc, METI/NASA, USGS, EPA, NPS, US Census Bureau, USDA, Maxar, Microsoft

Sudbury DOT

0 15 30 60 Feet

1:720

North Arrow

Legend					
Autumn olive	Bittersweet, wineberry, bittersweet, multiflora rose, burning bush	Buckthorn, multiflora rose, honeysuckle, barberry	Honeysuckle, bittersweet, buckthorn	Multiflora rose	Common reed
Burning bush	Glossy buckthorn	Garlic mustard	Japanese barberry	Norway Maple	Wineberry
Bittersweet		Honeysuckle	Catalpa tree	Porcelain berry, bittersweet, multiflora rose	
				ROW	LOW
				Tracks	Wetland
				Sheet Boundary	

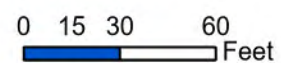
**SOLITUDE**  
LAKE MANAGEMENT

888.480.5253  
solitudelakemanagement.com





Sudbury DOT



1:720



- Autumn olive
- Burning bush
- Bittersweet

- Bittersweet, wineberry, bittersweet, multiflora rose, burning bush
- Glossy buckthorn

- Buckthorn, multiflora rose, honeysuckle, barberry
- Garlic mustard
- Honeysuckle

**Legend**

- Honeysuckle, bittersweet, buckthorn
- Japanese barberry
- Catalpa tree

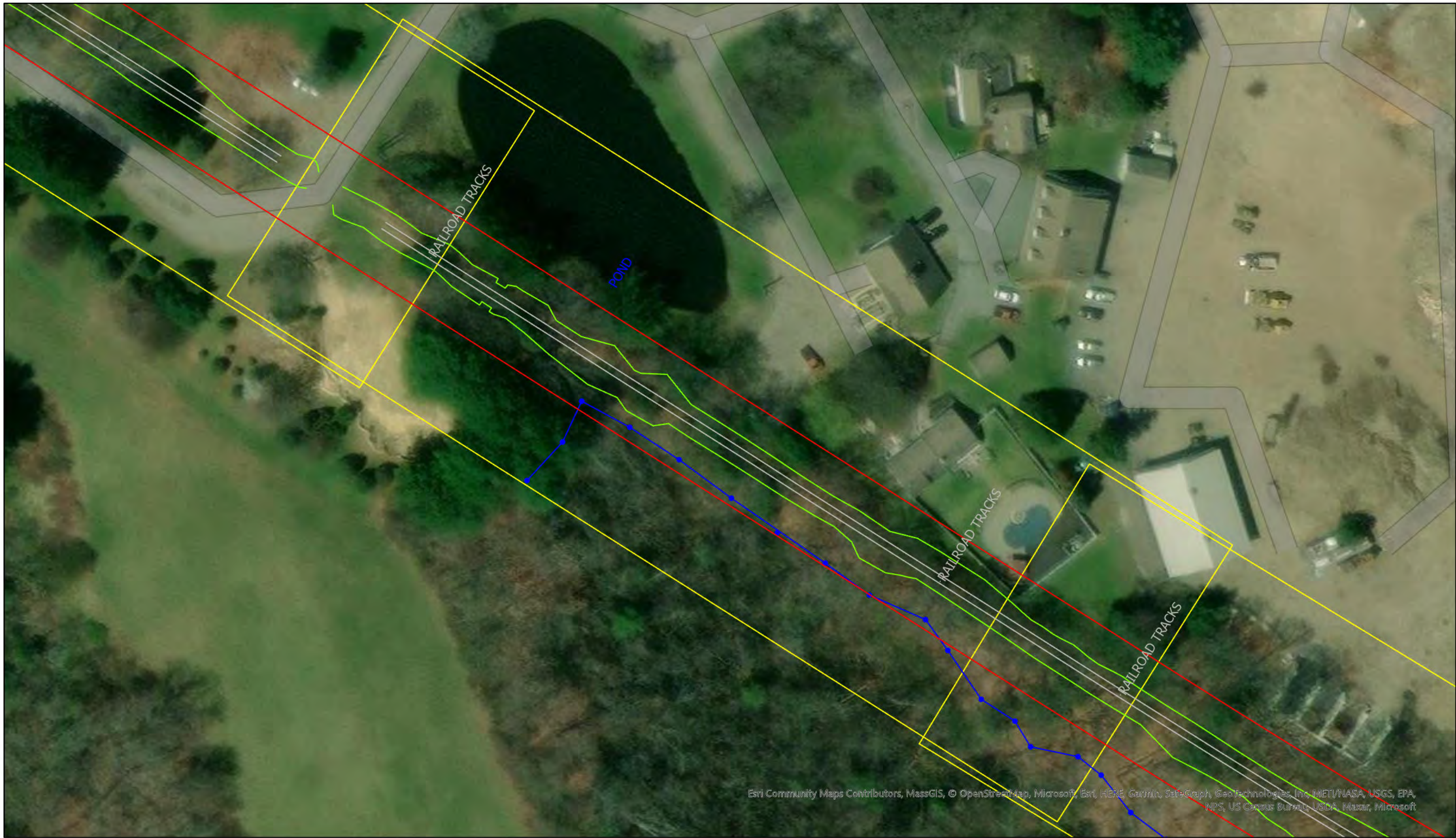
- Multiflora rose
- Norway Maple
- Porcelain berry, bittersweet, multiflora rose

- Common reed
- Wineberry

- ROW
- LOW
- Tracks
- Wetland
- Sheet Boundary

**SOLITUDE**  
LAKE MANAGEMENT

888.480.5253  
solitudelakemanagement.com



Esri Community Maps Contributors, MassGIS, © OpenStreetMap, Microsoft, Esri, HERE, Garmin, SwireGraph, GeoTechnologies, Inc, METI/NASA, USGS, EPA, NPS, US Census Bureau, USDA, Maxar, Microsoft

Sudbury DOT

0 15 30 60 Feet

1:720

**Legend**

Autumn olive	Bittersweet, wineberry, bittersweet, multiflora rose, burning bush	Buckthorn, multiflora rose, honeysuckle, barberry	Honeysuckle, bittersweet, buckthorn	Multiflora rose	Common reed
Burning bush	Glossy buckthorn	Garlic mustard	Japanese barberry	Norway Maple	Wineberry
Bittersweet		Honeysuckle	Catalpa tree	Porcelain berry, bittersweet, multiflora rose	

ROW  
 LOW  
 Tracks  
 Wetland  
 Sheet Boundary

**SOLITUDE**  
LAKE MANAGEMENT

888.480.5253  
solitudelakemanagement.com



Esri Community Maps Contributors, MassGIS, © OpenStreetMap, Microsoft, Esri, HERE, Garmin, SafeGraph, GeoTechnologies, Inc, INET/NASA, USGS, EPA, NPS, US Census Bureau, USDA, Mapbox, Microsoft

Sudbury DOT

0 15 30 60 Feet

1:720

North arrow pointing up with 'N' indicator.

Legend					
Autumn olive	Bittersweet, wineberry, bittersweet, multiflora rose, burning bush	Buckthorn, multiflora rose, honeysuckle, barberry	Honeysuckle, bittersweet, buckthorn	Multiflora rose	Common reed
Burning bush	Glossy buckthorn	Garlic mustard	Japanese barberry	Norway Maple	Wineberry
Bittersweet	Honeysuckle	Catalpa tree	Porcelain berry, bittersweet, multiflora rose	ROW	LOW
				Tracks	Wetland
				Sheet Boundary	

**SOLITUDE**  
LAKE MANAGEMENT

888.480.5253  
solitudelakemanagement.com



Sudbury DOT

0 15 30 60 Feet

1:720

North Arrow

Legend					
Autumn olive	Bittersweet, wineberry, bittersweet, multiflora rose, burning bush	Buckthorn, multiflora rose, honeysuckle, barberry	Honeysuckle, bittersweet, buckthorn	Multiflora rose	Common reed
Burning bush	Glossy buckthorn	Garlic mustard	Japanese barberry	Norway Maple	Wineberry
Bittersweet		Honeysuckle	Catalpa tree	Porcelain berry, bittersweet, multiflora rose	
				ROW	LOW
				Tracks	Wetland
				Sheet Boundary	

**SOLITUDE**  
LAKE MANAGEMENT

888.480.5253  
solitudelakemanagement.com



Esri Community Maps Contributors, MassGIS, © OpenStreetMap, Microsoft, Esri, HERE, Garmin, SafeGraph, GeoTechnologies, Inc, MET/NASA, USGS, EPA, NPS, US Census Bureau, USDA, Maxar, Microsoft

Sudbury DOT

0 20 40 80 Feet

1:960

Legend					
Autumn olive	Bittersweet, wineberry, bittersweet, multiflora rose, burning bush	Buckthorn, multiflora rose, honeysuckle, barberry	Honeysuckle, bittersweet, buckthorn	Multiflora rose	Common reed
Burning bush	Glossy buckthorn	Garlic mustard	Japanese barberry	Norway Maple	Wineberry
Bittersweet		Honeysuckle	Catalpa tree	Porcelain berry, bittersweet, multiflora rose	
				ROW	LOW
				Tracks	Wetland
				Sheet Boundary	

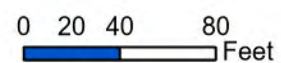
**SOLITUDE**  
LAKE MANAGEMENT

888.480.5253  
solitudelakemanagement.com



Esri Community Maps Contributors, MassGIS, © OpenStreetMap, Microsoft, Esri, HERE, Garmin, SafeGraph, GeoTechnologies, Inc, METI/NASA, USGS, EPA, NPS, US Census Bureau, USDA, Maxar, Microsoft

Sudbury DOT



1:960



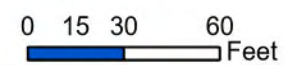
**Legend**

- |              |  |   |                                     |   |             |                |
|--------------|--|---|-------------------------------------|---|-------------|----------------|
| Autumn olive | Bittersweet, wineberry, bittersweet, multiflora rose, burning bush | Buckthorn, multiflora rose, honeysuckle, barberry | Honeysuckle, bittersweet, buckthorn | Multiflora rose                               | Common reed | ROW            |
| Burning bush | Glossy buckthorn   | Garlic mustard                                    | Japanese barberry                   | Norway Maple                                  | Wineberry   | LOW            |
| Bittersweet  |  | Honeysuckle                                       | Catalpa tree                        | Porcelain berry, bittersweet, multiflora rose |             | Tracks         |
|              |  |   |                                     |   |             | Wetland        |
|              |  |   |                                     |   |             | Sheet Boundary |

**SOLITUDE**  
LAKE MANAGEMENT  
888.480.5253  
solitudelakemanagement.com



Sudbury DOT



1:720



- Autumn olive
- Burning bush
- Bittersweet

- Bittersweet, wineberry, bittersweet, multiflora rose, burning bush
- Glossy buckthorn

- Buckthorn, multiflora rose, honeysuckle, barberry
- Garlic mustard
- Honeysuckle

**Legend**

- Honeysuckle, bittersweet, buckthorn
- Japanese barberry
- Catalpa tree

- Multiflora rose
- Norway Maple
- Porcelain berry, bittersweet, multiflora rose

- Common reed
- Wineberry

- ROW
- LOW
- Tracks
- Wetland
- Sheet Boundary

**SOLITUDE**  
LAKE MANAGEMENT

888.480.5253  
solitudelakemanagement.com