

Guided walks in Sudbury conservation areas

As presented to Conservation
Commission on 11/29/2021

Neela de Zoysa



Hop brook by Nathalie Guerin

Programs offered through LS Adult & Community Education

1. Orientation to Sudbury conservation areas (live virtual):
2019 Fall, 2020 Fall, 2021 Spring and Fall
1. Wildflowers of Spring and Summer (live virtual): 2021 Spring
2. Guided walks: 2020 Fall, 2021 Spring, Summer and Fall

Co-sponsored by

- Sudbury Conservation Commission,
- Sudbury Valley Trustees
- Friends of the Assabet River NWR
- The Wayside Inn



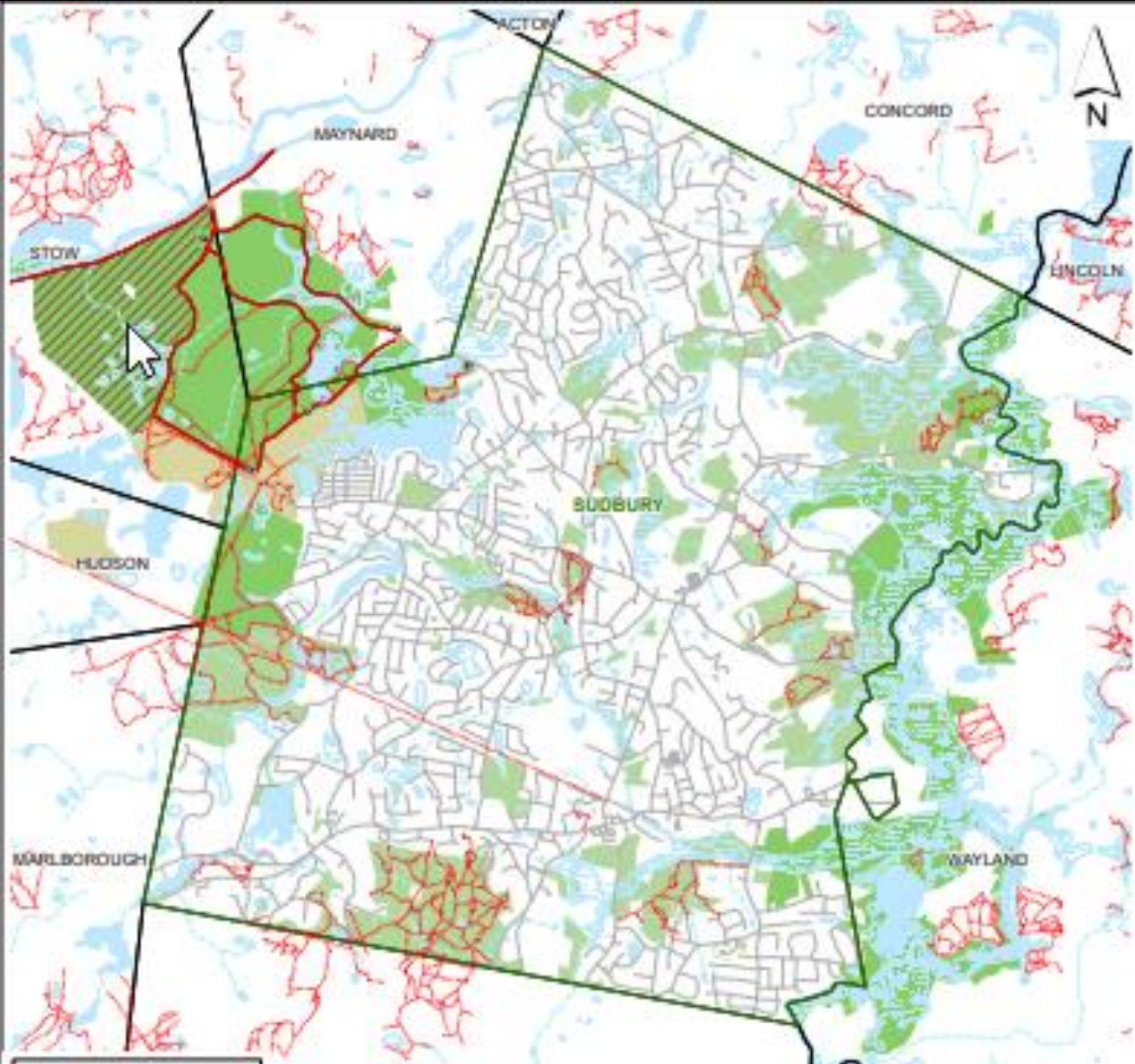
What was covered during the walks

- Orientation to the town conservation areas
- Participants' use of the conservation lands
- Rules of use – vis a vis the different agencies that manage the land
- Land management – wetland laws
- Governance – our role as citizens, voters, volunteers , advocates
- Plants take center stage – I am a botanist!
- Wildlife
- Geology, glacial history, ecology, hydrology
- Native American history
- Colonial history and recent history



Nathalie Guerin

Locate
yourself in
Sudbury



Friends of the Assabet River NWR Map of Sudbury Conservation lands
Designed by Neela de Zoysa Cartographer Jill Phelps Kern

3

Western Front:
Hop Brook,
Memorial Forest
Assabet River
National Wildlife
Refuge

1

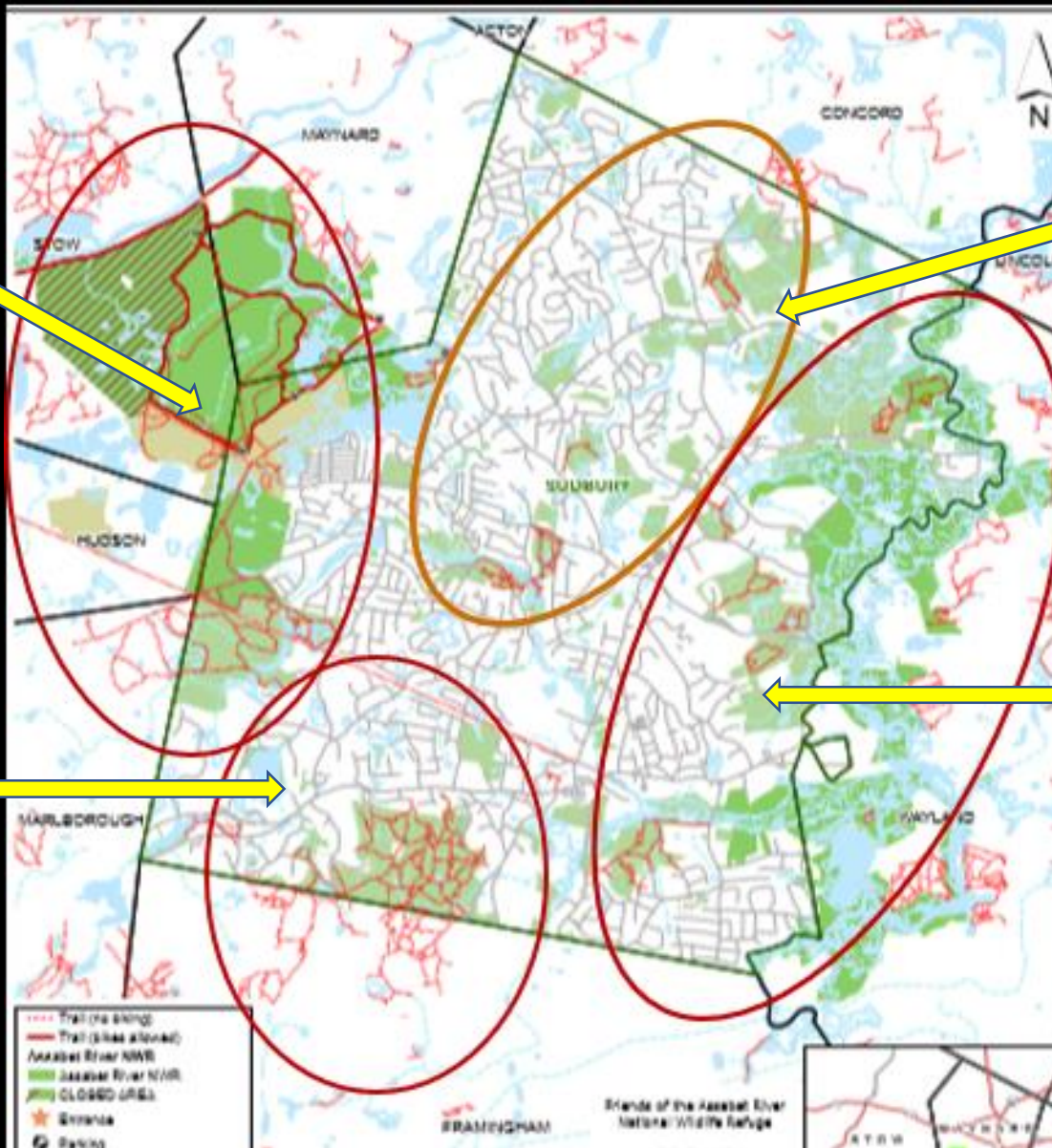
Farms of North:

2

**Eastern Boundary
Along the
Sudbury River**

4

**Vistas of the
south Nobscot
and Wayside
area**



How do you enjoy the conservation areas ?

PASSIVE RECREATION

Are you a Hiker ?

A Walker ?

Do you enjoy plants and wildflowers?

Do you birdwatch?

View Wildlife ?

Do you like to photograph nature?

ACTIVE RECREATION

Do you bike ?

Walk your dog ?

Do you kayak or canoe?

NEED A PERMIT

Do you camp?

Do you fish ?

Do you hunt?



Are you looking for inspiring vistas?

Quiet and peaceful places?

Areas close to home?

Rules of use: Dos and Don'ts



ALL AREAS: Open sunrise to sunset

ALL AREAS: OPEN FOR PASSIVE RECREATION on designated trails: Hiking, walking, skiing, snowshoeing, birdwatching, wildlife viewing, photography

Read signs announcing the end of trails. Do not trespass on private property or areas set aside for plant and wildlife conservation and sensitive wetlands.

ACTIVE RECREATION: Dog walking, biking, picnicking, canoeing, horse back riding. Only allowed on designated trails, or properties depending on organization. **NO DOGS** in National Wildlife Refuges. **Read signs.**

ACTIVE RECREATION NEEDING PERMITS: Fishing, hunting, camping, campfires, berry picking.

HUNTING allowed by permit in Federal, state and town lands. No **HUNTING** in Sudbury Valley Trustees land. Non-hunters should be aware and **wear visible clothing** if walking at dusk and dawn. Stay on trails

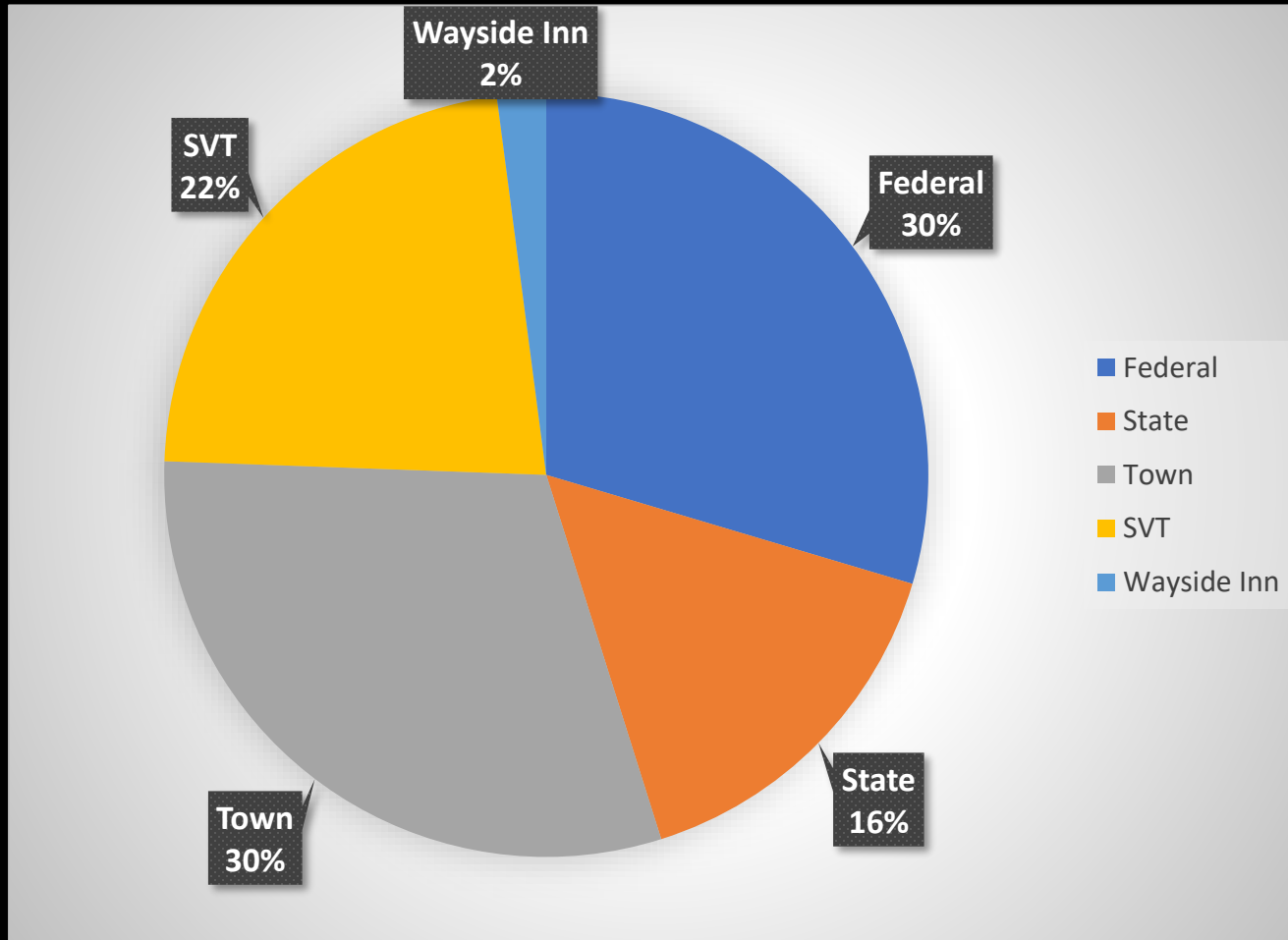
ALL PROPERTIES PROHIBIT picking of plants and disturbing wildlife, disposing trash and operating motorized vehicles

How much land (and water)? Who manages it?

4,700 acres – 30 % of town area is protected natural areas

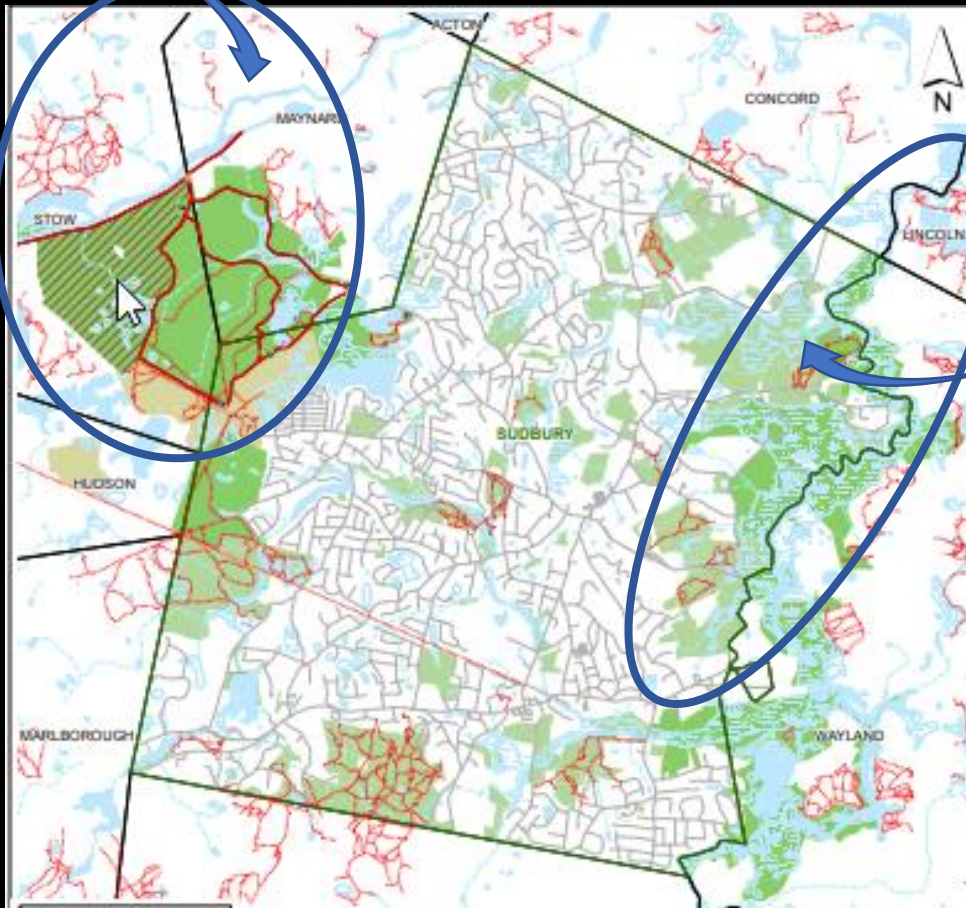
- ❑ Mostly Public lands - Taxpayer! Taxpayer!
 - ❑ Federal – US Fish and Wildlife Service – 1430
 - ❑ Commonwealth of MA - 750
 - ❑ Town – Conservation lands – 1270 (400 acres Conservation Restrictions)
 - ❑ Sudbury Water District - 200
- ❑ Private Land Trusts and Foundations - Membership
 - ❑ Sudbury Valley Trustees 1100 (620 and 460 in Conservation Restrictions)
 - ❑ Wayside Inn Foundation – 100 acres
- ❑ River and waterways protection organizations - Membership
 - ❑ OARS – Organization for Assabet, Sudbury and Concord rivers,
 - ❑ SUASCO Stewardship Council
- ❑ Several additional (thousands) acres under wetland protection on private land
- ❑ Contiguous land in surrounding towns - Lincoln, Concord, Wayland, Framingham, Marlborough, Hudson, Maynard and Stow

Breakdown of the land areas



Federal lands: Great Meadows NWR Sudbury Unit, Assabet River NWR

Assabet River NWR



Great
Meadows
NWR



Federal: “Wild and Scenic River” designation



Led by the National Park Service the council includes federal agencies (fws), regional agencies and town Conservation Com.

Annual celebration in June: Riverfest



OARS: Organization for Assabet Concord and Sudbury Rivers

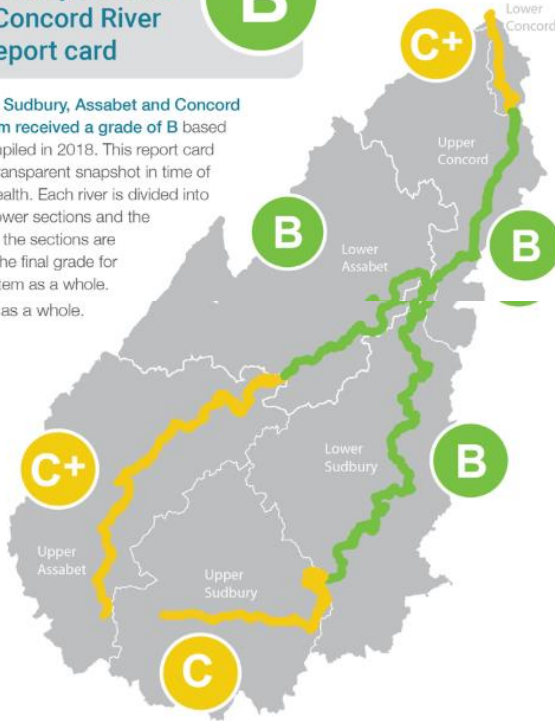
Rivers

The Sudbury, Assabet and Concord River report card

B

Overall, the Sudbury, Assabet and Concord River system received a grade of **B** based on data compiled in 2018. This report card provides a transparent snapshot in time of the rivers' health. Each river is divided into upper and lower sections and the grades of all the sections are reflected in the final grade for the river system as a whole.

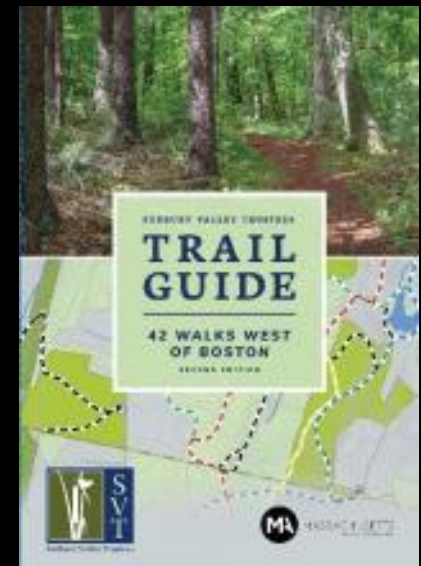
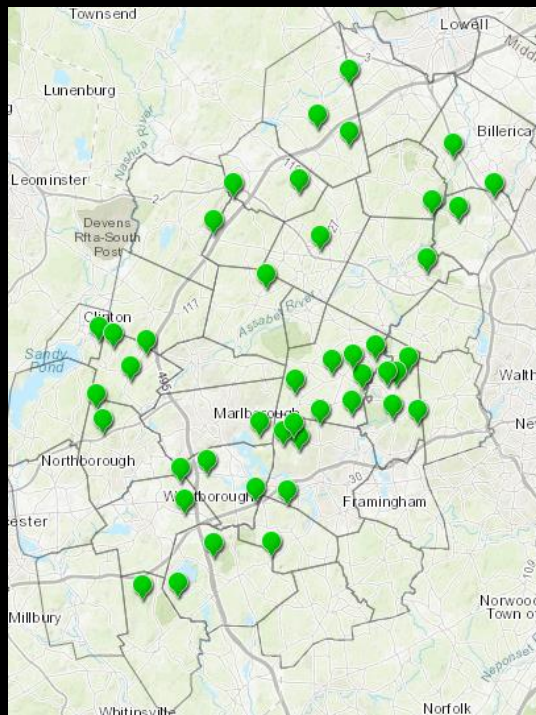
the river system as a whole.



- River guides for all 3 rivers
- River health report card
- Annual river clean up
- Wild and scenic river film festival

Sudbury Valley Trustees: Regional land trust

Operates in the Concord, Assabet and Sudbury river basin; 36-community region west of Boston and manage over 50 properties and maintain some 50 miles of trails.



SVT Properties in Sudbury



Brues woods



Grey Reservation



Lyons Cutler



Round Hill



Memorial Forest



Nobscot Scout Reservation



Wolbach Farm

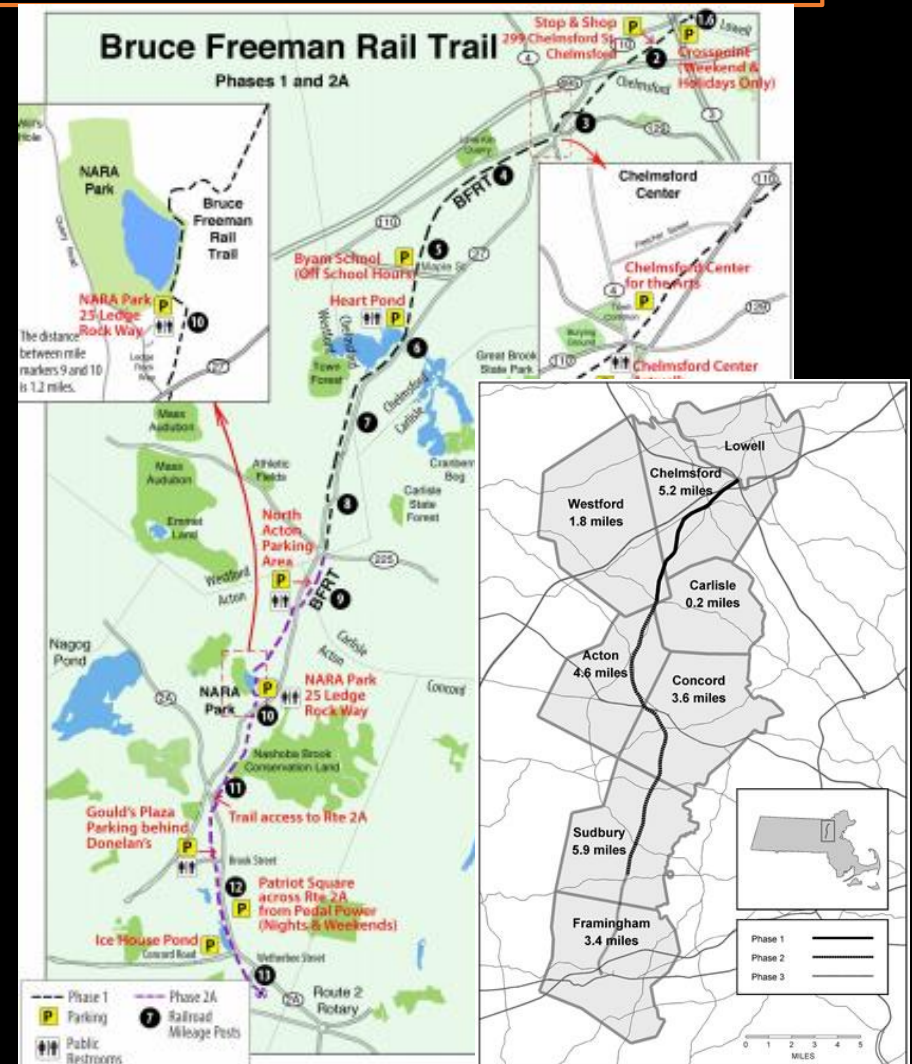
State lands: Pantry Brook Wildlife Management Area



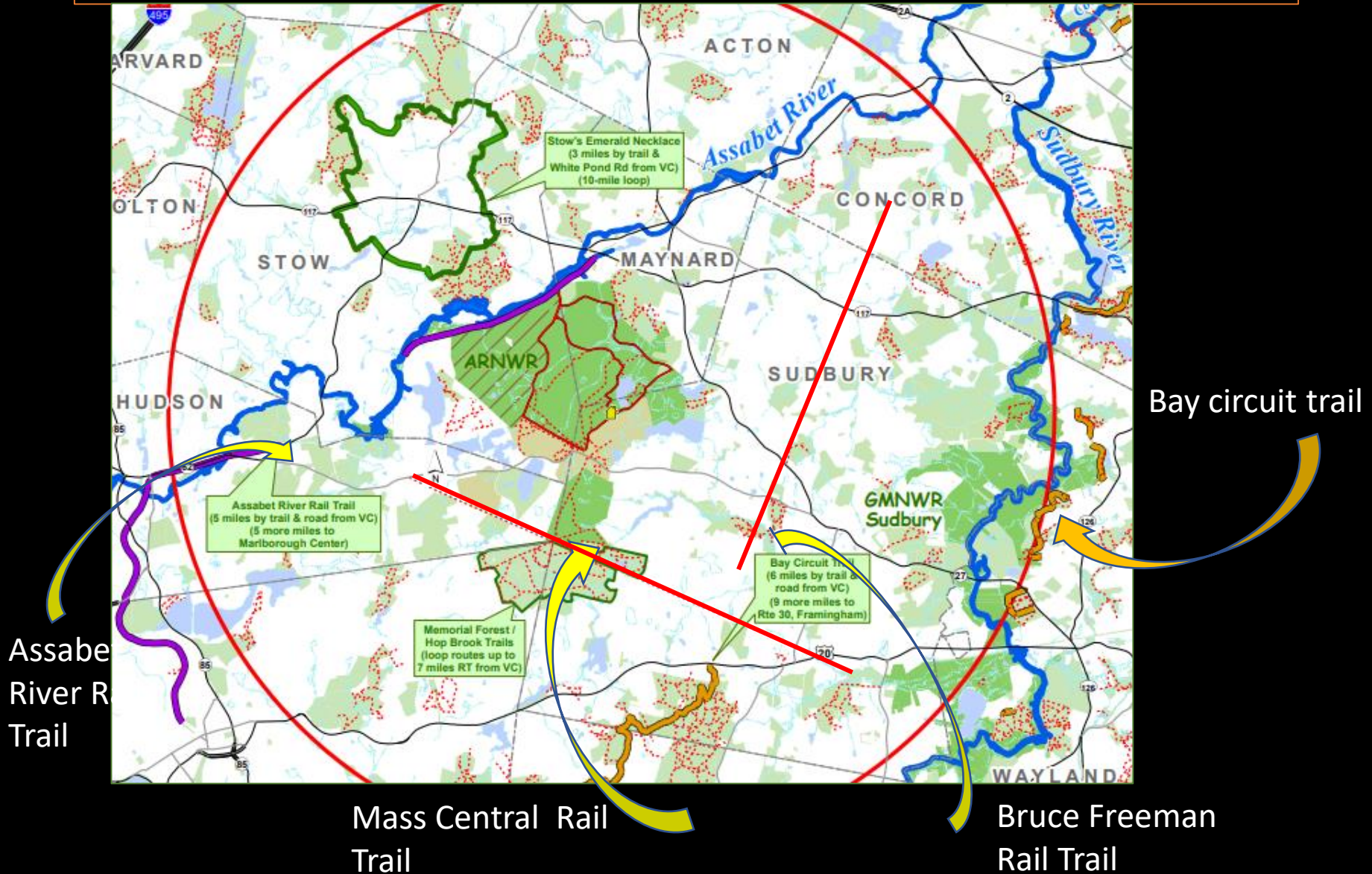
It takes a village: Federal lands
State lands Town lands and
Private land Trust, CRs to protect a
contiguous area

Regional trail networks

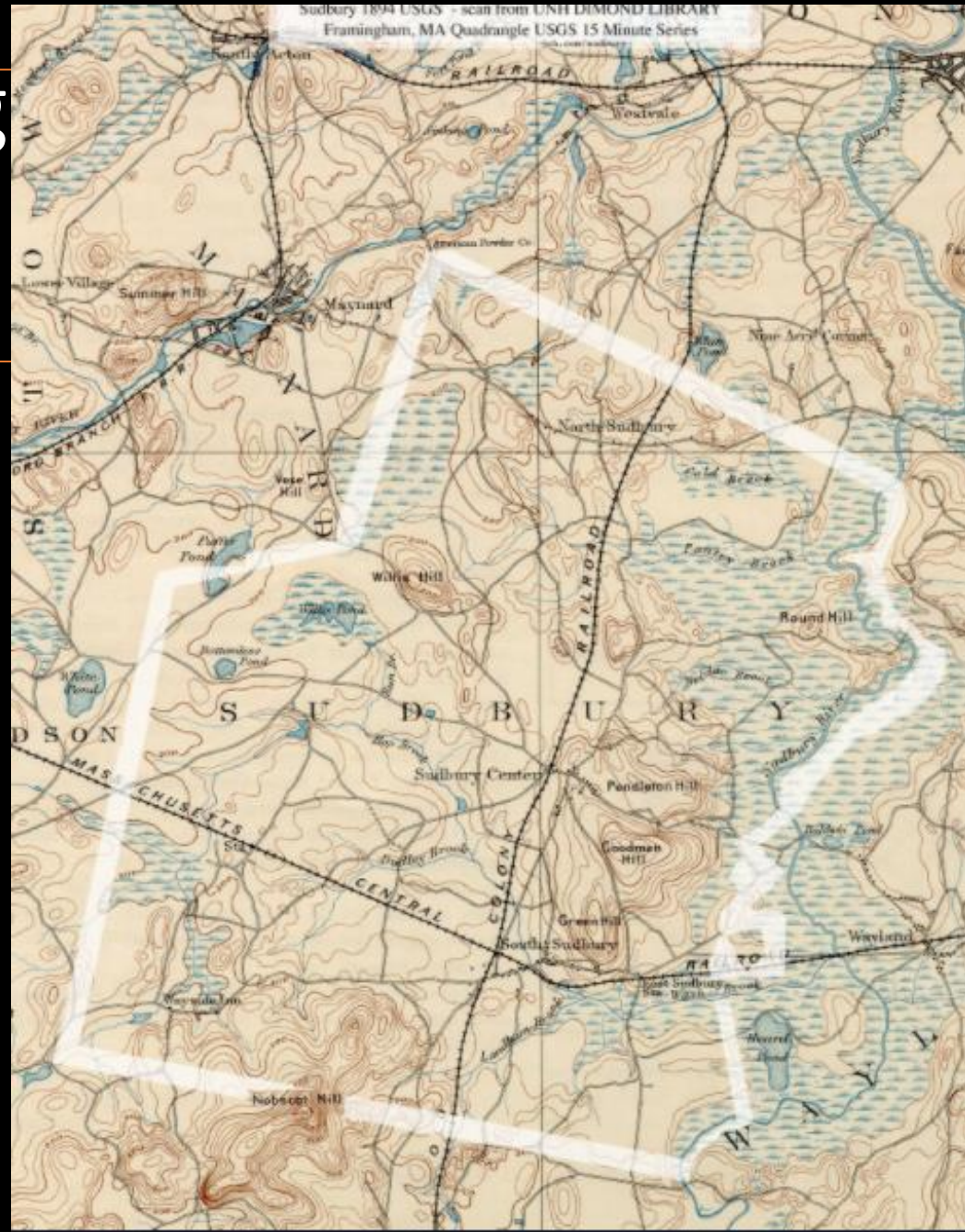
Bay circuit trail and Bruce Freeman rail trail



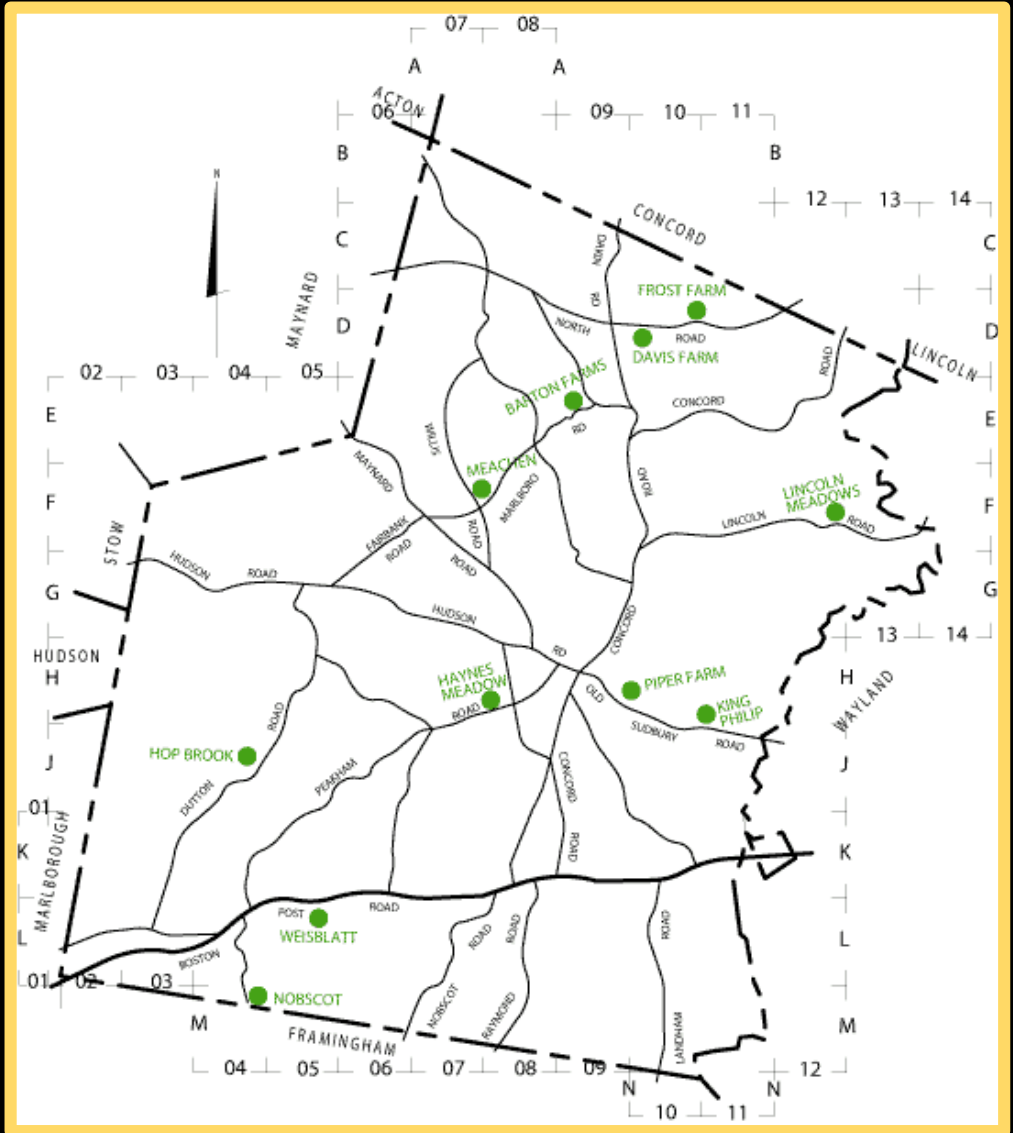
Connections to the trails in Sudbury



1894 map showing
railway lines
through Sudbury



Sudbury
Conservation
Areas: *Fields,*
forests,
wetlands and
rocky outcrops

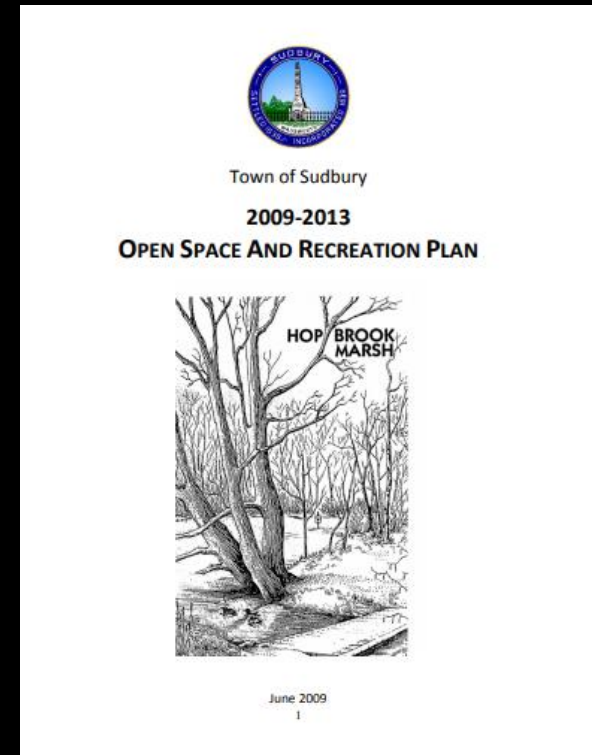
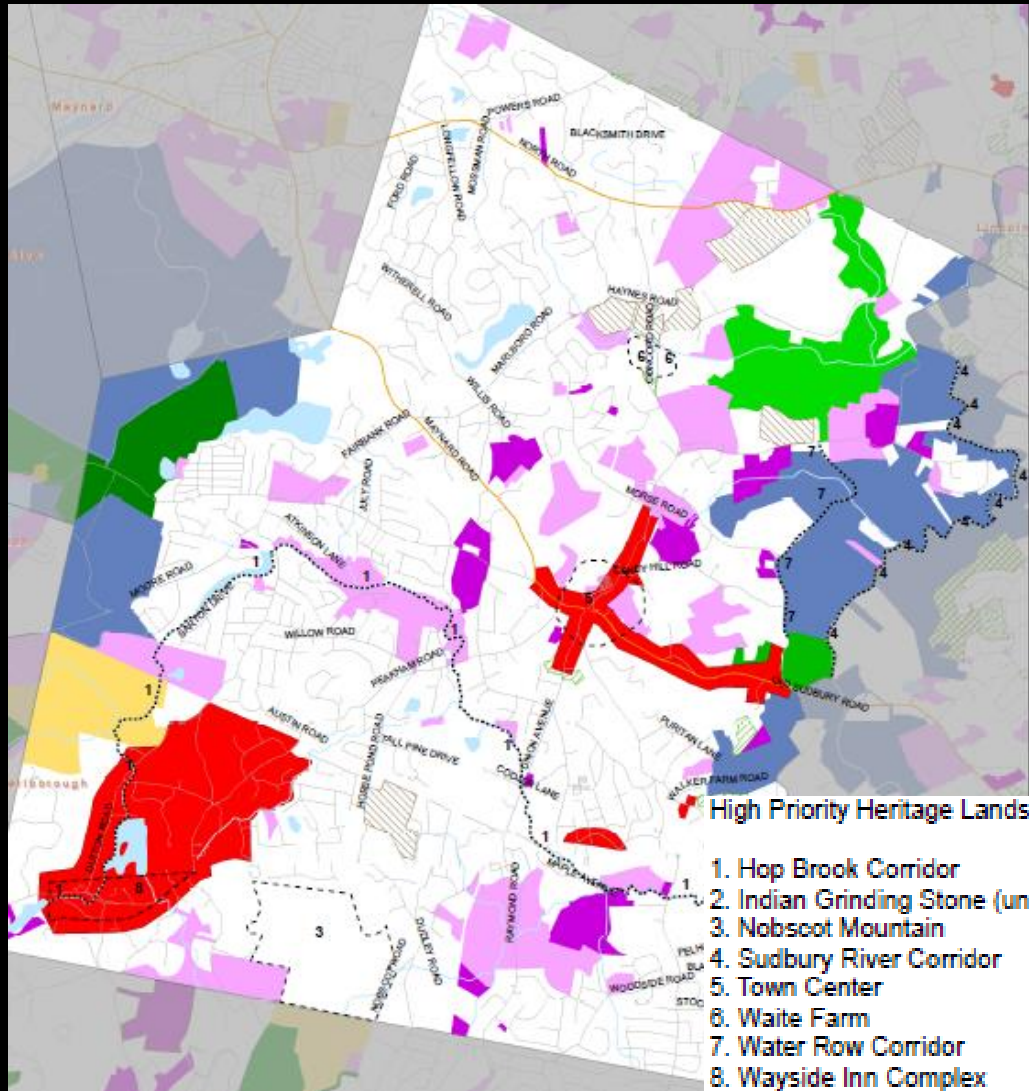


Sudbury Conservation Areas: *Fields, forests, wetlands and rocky outcrops*

- Barton Farm
- Davis Farm
- Frost Farm
- Poor Farm Meadow
- Broad acres Farm
- Haynes Meadow
- Lincoln Meadows
- King Philip Woods
- Piper Farm
- Hop Brook Marsh
- Nobscot conservation Land
- Tippling Rock



Sudbury Open Space and Recreation Plan



Note: Default Legend, all categories may not appear on the map.

DCR	Municipal	Agricultural Preservation Restriction
DCRSD/DIG	Federal	CR/AMR Combination
D/DG	Land Trust	Other Legal Interest
Other State	Non-Profit	State Historic Resources
County	Conservation Restriction	Interstate

State listed Endangered plants and animals observed in Sudbury



Northern white bog orchid



Heart-leaved twayblade orchid



Henslow's sparrow



American bittern

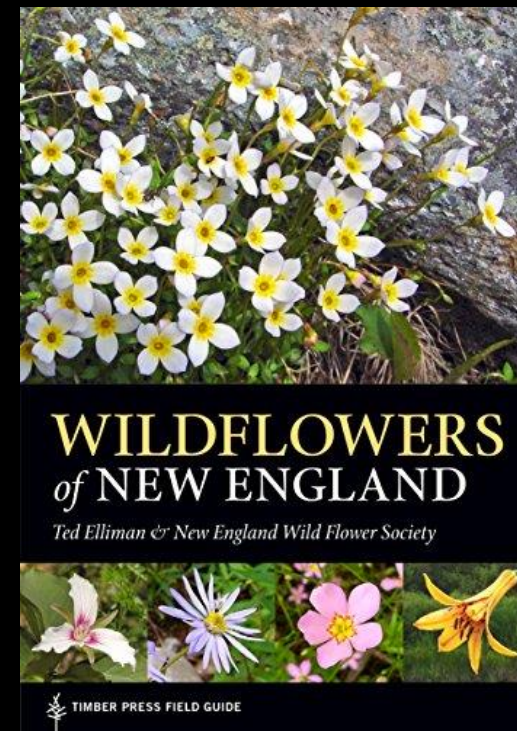
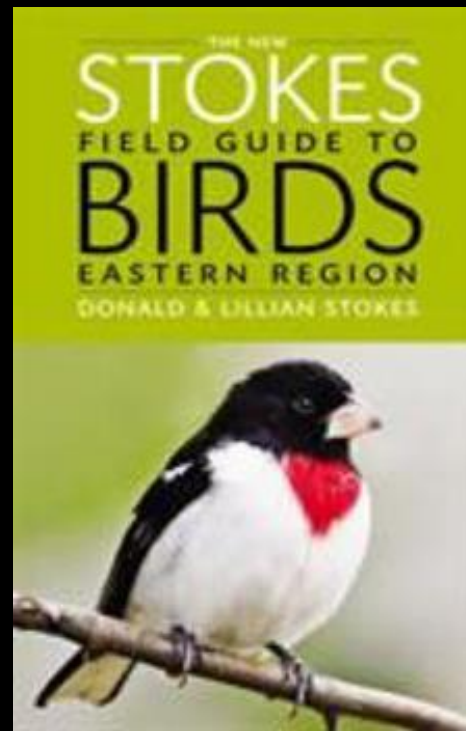
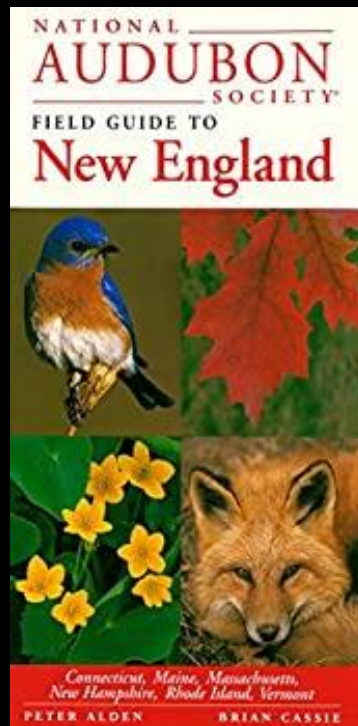
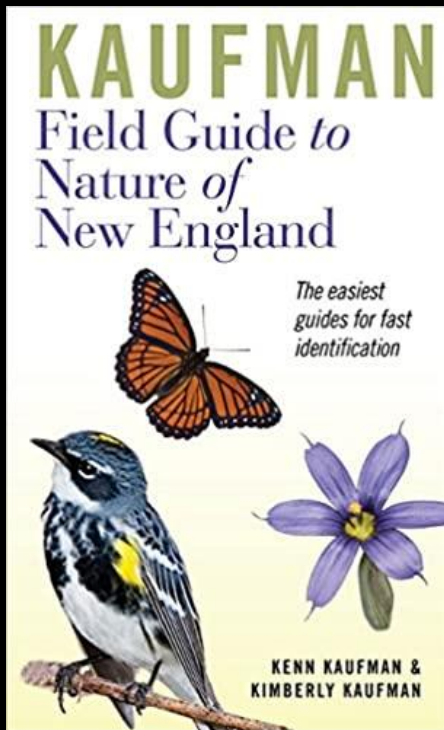


Blue spotted salamander



Marbled salamander

Resources : Nature guides



Resources : Digital guides and Plant ID Apps

Native Plant Trust
GO BOTANY Discover thousands of New England plants

Home Simple Key PlantShare Full Key Dichotomous Key Teaching Help Search...

Simple ID Key

Want to know what that plant is? With our Simple Key, you can identify over 1,200 common native and naturalized New England plants! Observe closely, collect a sample or take a photo, answer some questions, and narrow down to the correct identification.

[GET STARTED](#)

PlantShare

Connect with other plant fans!
Join our on-line community of plant enthusiasts! Find friends, collaborate on field surveys for plants, share your discoveries, get help identifying plants, make maps, and develop checklists of plants for particular sites you are exploring.

[LEARN MORE](#)

Advanced ID Tools

For experienced botanists!
Identify over 3,000 New England plants by using our Full Identification Key, including technical multiple-access and dichotomous keys to families, genera, and species. Also learn about subspecies and varieties native to our region.

[LEARN MORE](#)

Teaching Tools

New: a useful teaching resource!
Go Botany encourages informal, self-directed education in botany for science students and beginning and amateur botanists. Professors, teachers, and environmental educators can share curricula and teaching ideas.

[LEARN MORE](#)

Plant of the Day: *Verbena hastata* blue vervain


Blue vervain is a pretty wildflower of meadows, shores and marshes. It is a good attractor of pollinators, and the seeds are eaten by a variety of songbirds. The most unusual of many traditional uses of blue vervain is among the Iroquois, who used a cold infusion of mashed ...

[LEARN MORE](#)

Connect with Nature

Explore and share your observations from the natural world.

[SIGN UP](#) [EXPLORE](#)






Ashutosh Shinde - Mantid from Thane, India

CALIFORNIA ACADEMY OF SCIENCES NATIONAL GEOGRAPHIC

iNaturalist is a joint initiative of the California Academy of Sciences and the National Geographic Society.

How It Works

- 
1 Record your observations
- 
2 Share with fellow naturalists
- 
3 Discuss your findings

GoBotany – Digital identification guide of the Native Plant Trust for New England Plants

iNaturalist, Plantnet, Leafsnap, Picturethis

New favorites?

Hiking

Walking

Family outing with children

Enjoying wildflowers

Birdwatching

Viewing wildlife

Nature photography

Biking

Walking your dog

Kayaking and canoeing

Camping

Fishing

Hunting

Where are the best vistas

Quiet places

Areas close to home



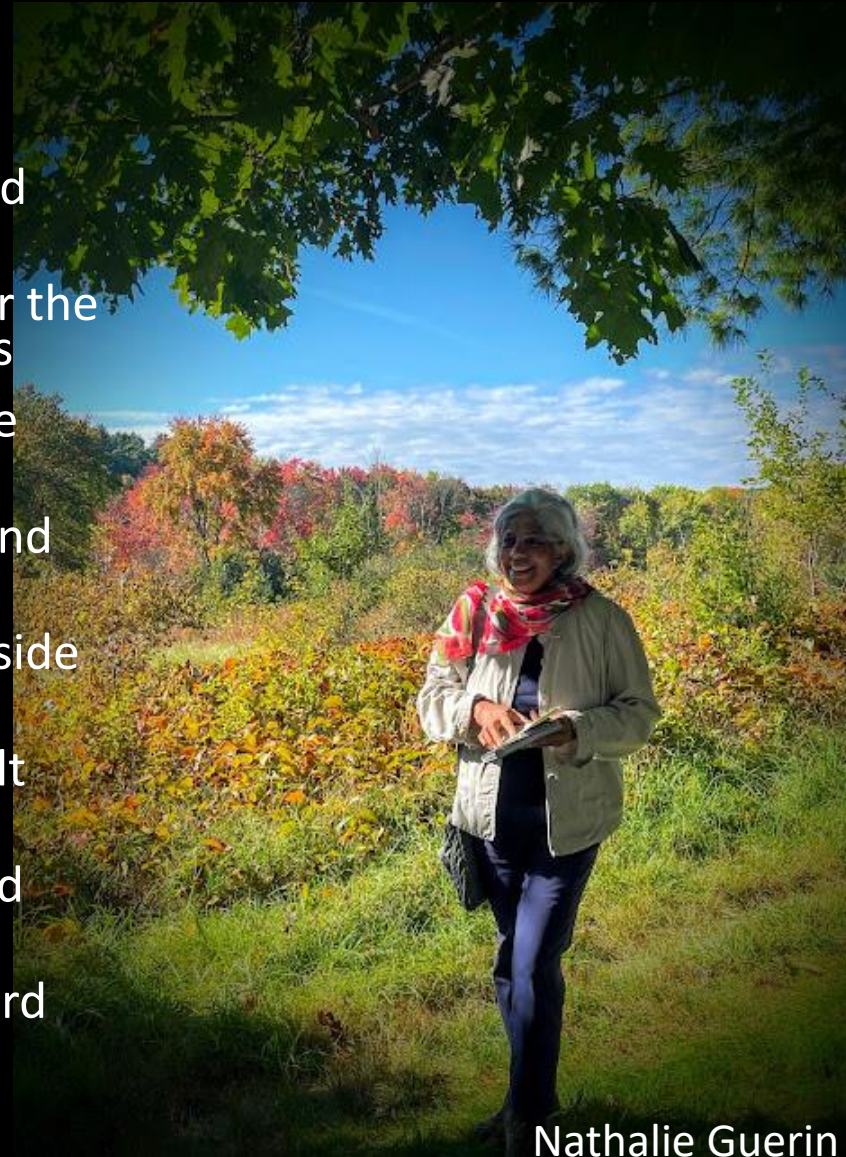
Nathalie Guerin

Support our public lands and conservation non- profits

- *Educate yourself, educate others*
 - *Use your public resources*
 - *Volunteer – serve on boards Committees, pick up litter, remove invasives, organize walks*
 - *Be vigilant – report misuse*
 - *Take out a Membership, make a donation*
 - *Advocate for policy and legislation*
- ❑ Public lands -Taxpayer! Taxpayer!
 - ❑ Federal – US Fish and Wildlife Service
 - ❑ Commonwealth of MA
 - ❑ Town – Conservation lands
 - ❑ Friends of the Assabet River NWR - Membership
 - ❑ Private Land Trusts and Foundations - Membership
 - ❑ Sudbury Valley Trustees
 - ❑ Wayside Inn Foundation
 - ❑ River and waterways protection organizations – Membership
 - ❑ OARS
 - ❑ SUASCO Stewardship Council
 - ❑ Hop Brook Protection Association
 - ❑ Rail Trails Membership
 - Bruce Freeman
 - Assabet River Rail trail

Thank you!

- Lori Capone, Conservation Coordinator and the Sudbury Conservation Commission
- Linh Phu, Complex Manager for USFWS for the Special Use Permit granted for these walks
- Paula Goodwin, President of Friends of the Assabet River NWR
- Debbie Pullen, Manager of Membership and Programs at SVT
- Sally Hild, Non-Profit Director of The Wayside Inn
- Theresa Kneeland and Cindy Simon, LS Ault and Community Ed
- All the wonderful walkers who have shared their enthusiasm, knowledge and skills.
- Nathalie Guerin for her photographic record of the walks including photos in this presentation.



Nathalie Guerin