

## **Fairbank Community Center**

### **December 2023 Update**

We've come a long way, baby! Since we last reported an update exactly two months ago, the Fairbank Community Center has reached a milestone – we have a Temporary Certificate of Occupancy! This means that, while the project is not completed, the new building can be occupied. The furniture was delivered and set up shortly after Thanksgiving, immediately followed by the movers last week, transferring all of the items diligently identified and packed by the staff of each department from the old building to the new. While they unpack and settle in, the rest of us can look forward to being welcomed into the new space upon each department's reopening date sometime after Christmas. A new year, a new home for the Park and Recreation department, Senior Center, and Sudbury Public Schools Administration :)

In case you just can't wait to see it in person, come along on a photo tour below. The photos were taken after the furniture was installed but before the movers came. The orange floor protection is unfortunate for photographs but necessary until all the messy work is done. Note that the photos do not show any audio-visual equipment. The procurement and installation of the AV package will be completed over the coming months.



The view from Haskell parking lot. Park and Rec is on the left side, SPS and Senior Center on the right. The area in between houses shared use spaces. The building wraps around a central front lawn area, referred to as the Commons.

## PARK AND RECREATION



The gym and temporary Park and Rec entry just to its left. The new permanent entrance will be completed as part of the Phase 2 work, after demolition of the old building.



The Park and Rec corridor at the temporary entrance. The gym is to your right (and visible through the windows). Three program rooms are to your left. A temporary reception desk is at the end of the corridor. (The new reception area and entrance will be to the left of the desk in the photo)



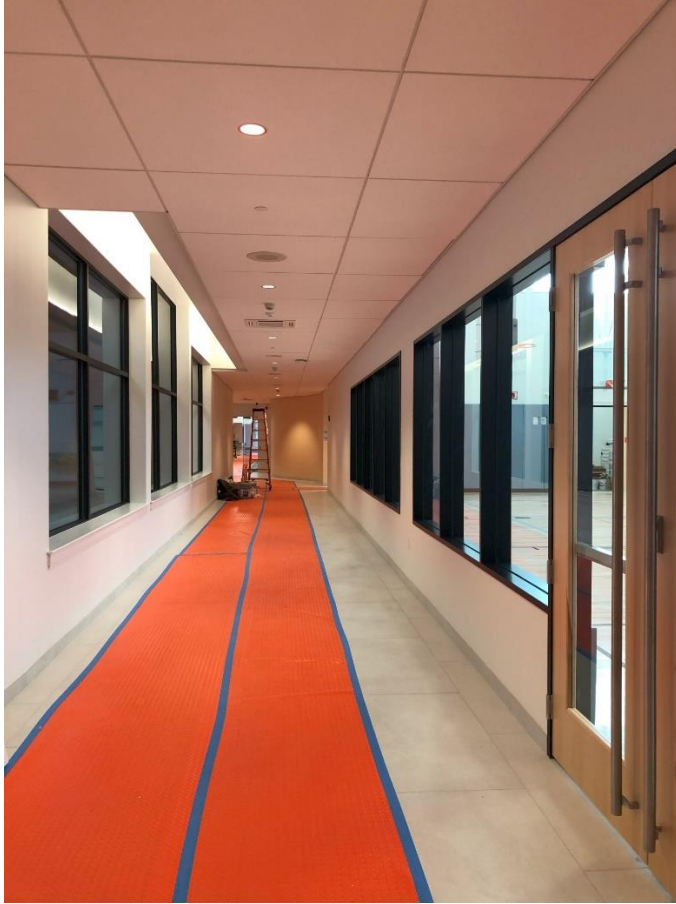
The gym has both full court and side basketball nets and is striped for basketball, volleyball and pickleball.



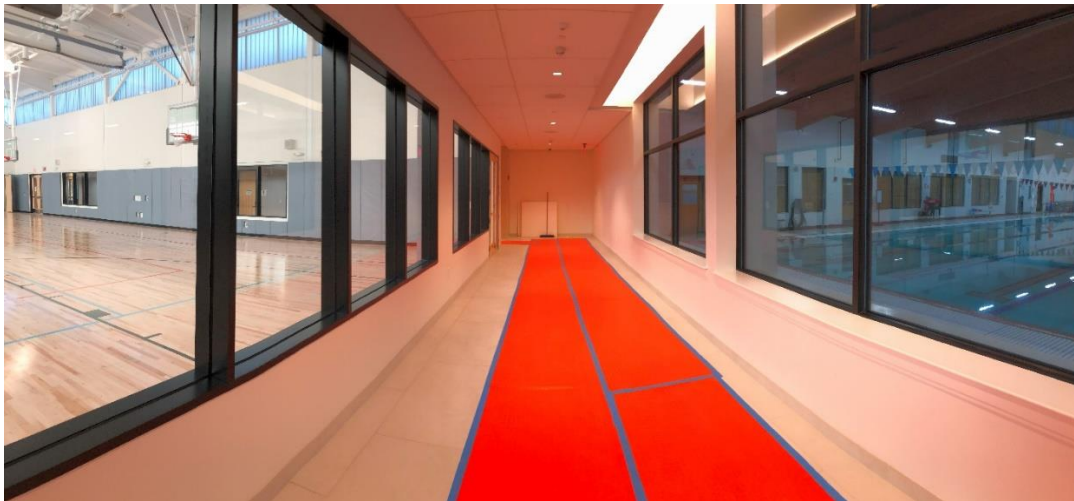


Program rooms have flexible furniture. The top photo is set up as the teen space. The bottom photo shows a connecting door between two of the program rooms.





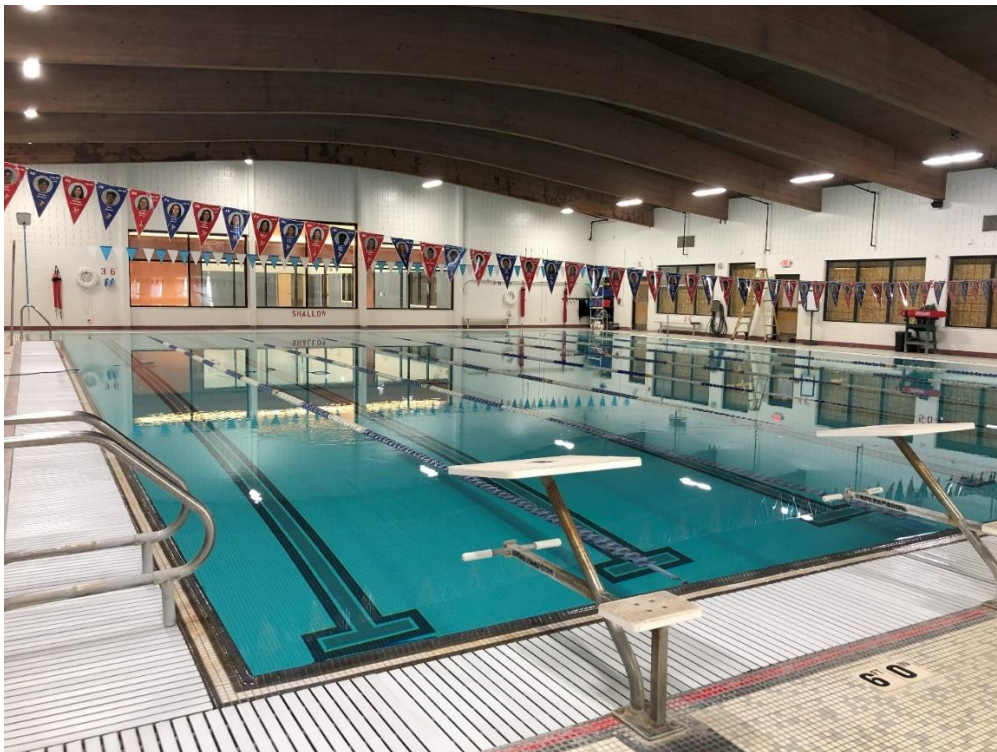
As you turn right at the end of the corridor you enter the main corridor that runs all the way to the Senior Center entrance at the other end of the building.



Turning around and looking back towards where the new Park and Rec entry will be (beyond The temporary wall ahead of you). The activities visible through the windows to the gym and Pool will liven up the corridor as you walk through.



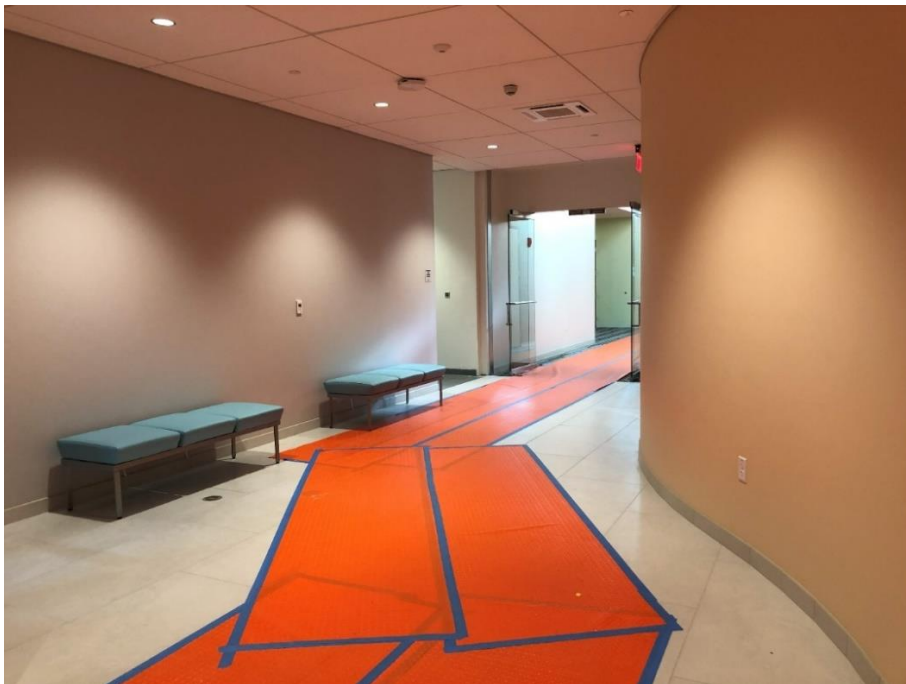
The tinted pool windows are the original exterior windows.



The view from the pool into the corridor and beyond to the daylight gym. Upon completion of Phase 2, the boarded up windows on the right will again open up to the Pool Viewing Room, which will be improved with views and daylight through new glass doors to the exterior.



New windows along the dive pool wall, new lap pool gutters, and a new swim team scoreboard (not part of the project, but new nonetheless).



Continuing down the main corridor you arrive here. The preschool program room is on the other side of the curved wall (we'll come back here). Through the glass doors is the shared use area. We'll go there later too. Take a left after the benches and head down the corridor to the locker rooms.

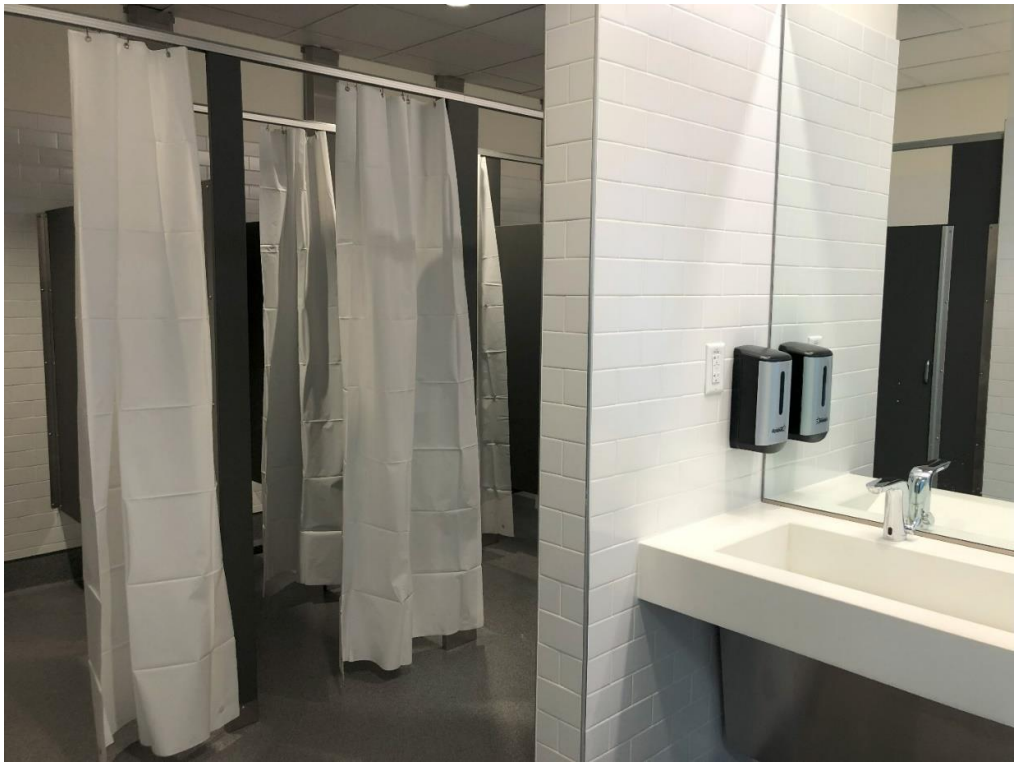


The locker room corridor is lit by doors and windows that overlook the back lawn.



Entering into to the men's and women's locker rooms, the door to the pool is straight ahead, with toilets, showers and sink to one side and lockers and dressing stalls to the other.

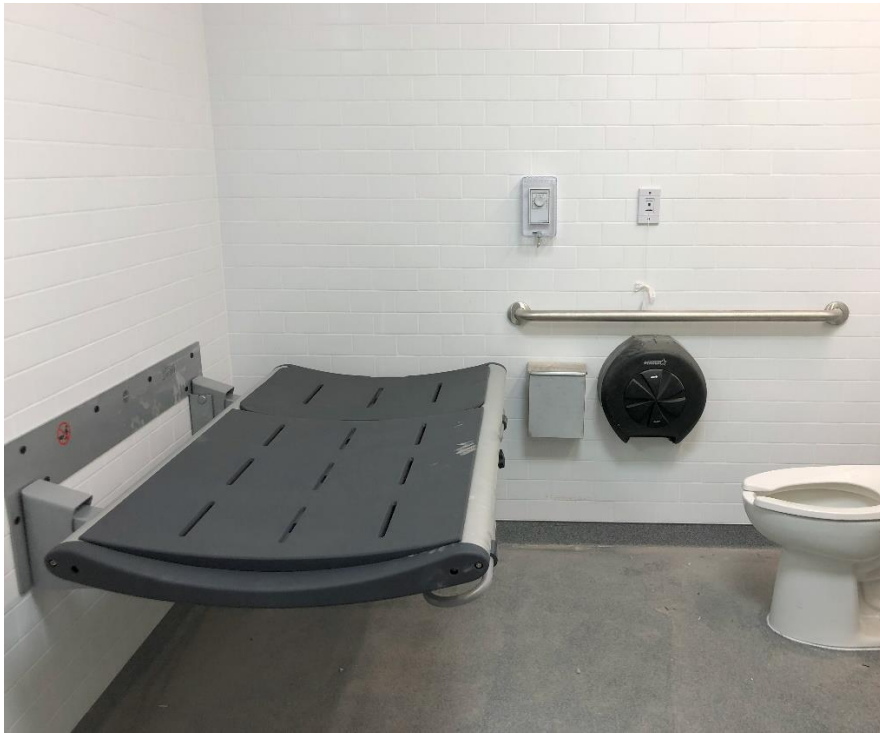






A third locker room is all gender and provides privacy and accessibility to anyone that desires to use it.





There are two private accessible changing rooms with a toilet, sink, and shower. This one provides an adult sized changing table and the other has a baby changing table.



The preschool program room on the other side of the curved wall includes a toddler sized toilet room with a half height door. The door to this room is directly across from a door to the gym for gross motor play.





The glass doors lead into the shared use space between the Park and Rec spaces and the Senior Center. First, let's head down to the Senior Center entrance at the other end of this corridor.

## SENIOR CENTER



The Senior Center and Sudbury Public Schools Administration entrances. The Senior Center is on the first floor and the SPS offices are above. They share a parking lot, but there is also parking across the street at Haskell fields, with a flashing pedestrian crossing signal. The drop-off and pickup zone in front is large enough for charter buses for Senior Center field trips.



The benches that were outside the Senior Center entrance have been salvaged and reinstalled along the new entrance walk.



The waiting area inside the Senior Center entrance allows views to the Parking lot and drop-off/pickup zone.



The reception desk is long and the wide corridor allows for milling around without overcrowding.



Just beyond the reception area is a café space for enjoying a cup of coffee and a treat with friends. A quiet lounge area is through the door on the right.





The lounge is set up for conversation, reading, and social interaction. A trellised terrace is through the doors.



The fireplace in the lounge is electric. Visual connection to the café allows views of activity in each space from the other.



The trellised terrace will provide a shady spot to socialize overlooking the rear lawn area. View is towards Hudson Road.



A wide corridor leads from the reception area to the program rooms.





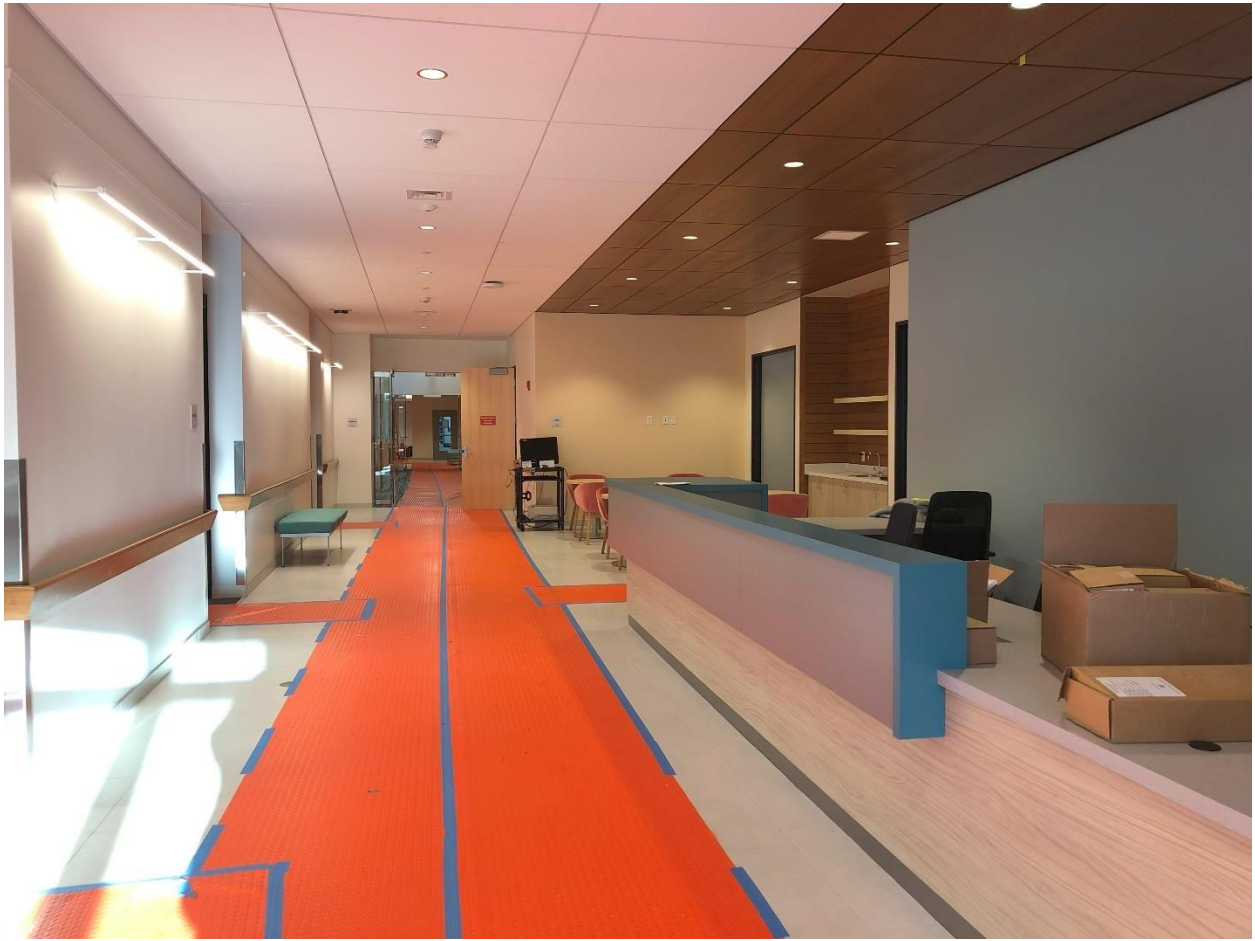
A meeting room setup for a large group.



A program room set up for cards or games.

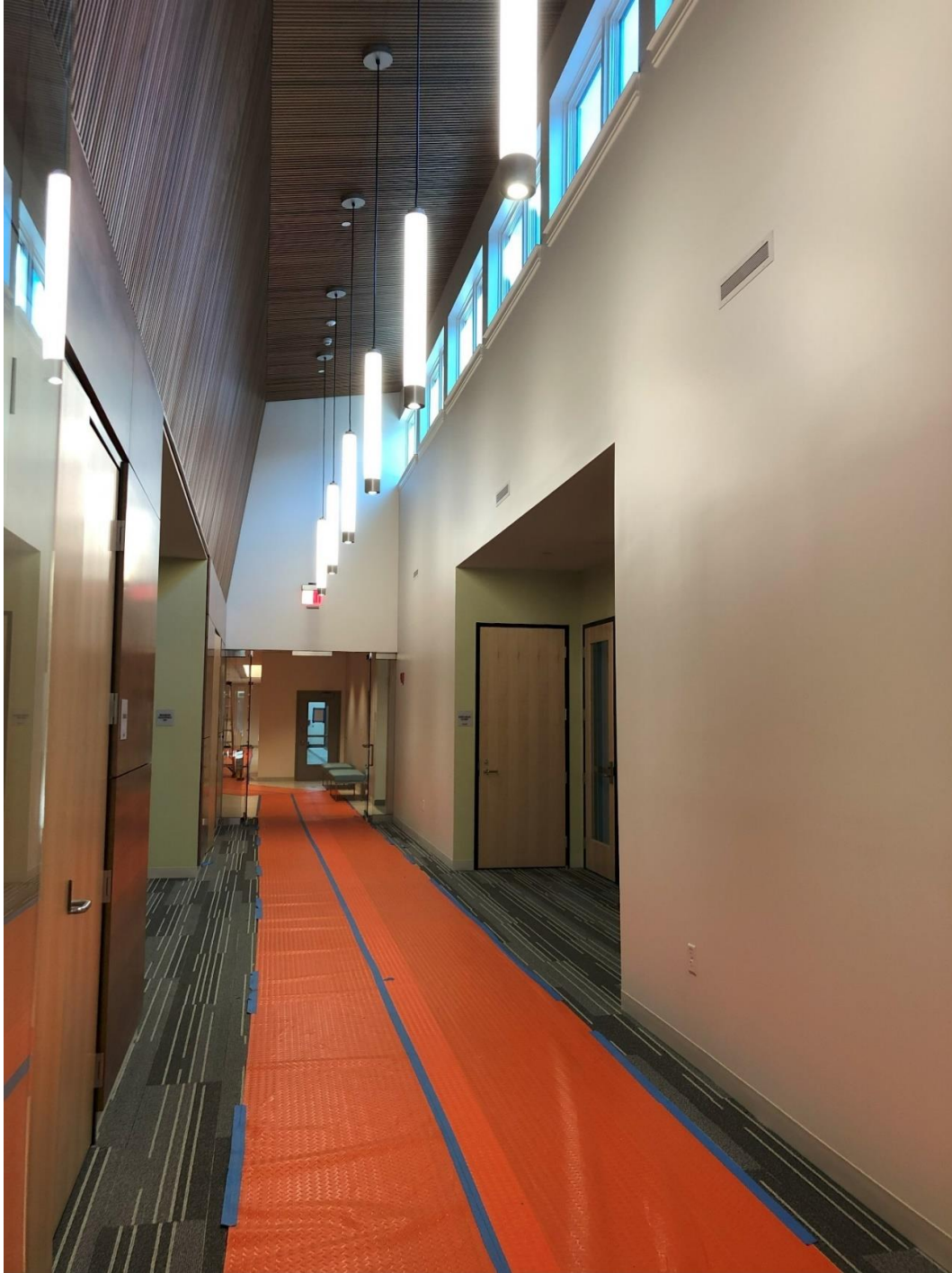


This large program room has room for a pool table and has a door leading to the Commons.



The main corridor runs from the Senior Center reception desk through another set of glass doors to the Shared spaces and Park and Rec area beyond.

## SHARED SPACES



The shared spaces are located on either side of this beautiful corridor where south exposure clerestory windows allow sunshine to stream in during the day while elegant pendant lights will light it up for evening activities.



The Fitness room and Arts and Crafts room are located on one side of the corridor.



The Fitness room has a mirrored wall, cushioned floor, and views and access to the back lawn, allowing for outdoor classes on nice days.



Next door the Arts and Crafts room also has access to the back lawn.







Across the corridor two doors lead into the Multi-purpose room. Due to supply chain issues, the delivery and installation of a folding partition that will allow for this room to be divided into two separate areas for simultaneous programming has been delayed.



The Multi-purpose room furnishings will allow for many types of activities. The opening in the wall to the left connects the room to the kitchen, creating opportunities for Senior Center lunch programs and rental opportunities for events by other groups and private parties. The exterior wall is all glass, with views to Haskell fields, and includes doors leading out to the Commons.



The commercial kitchen with serving counter opening to the Multipurpose room.



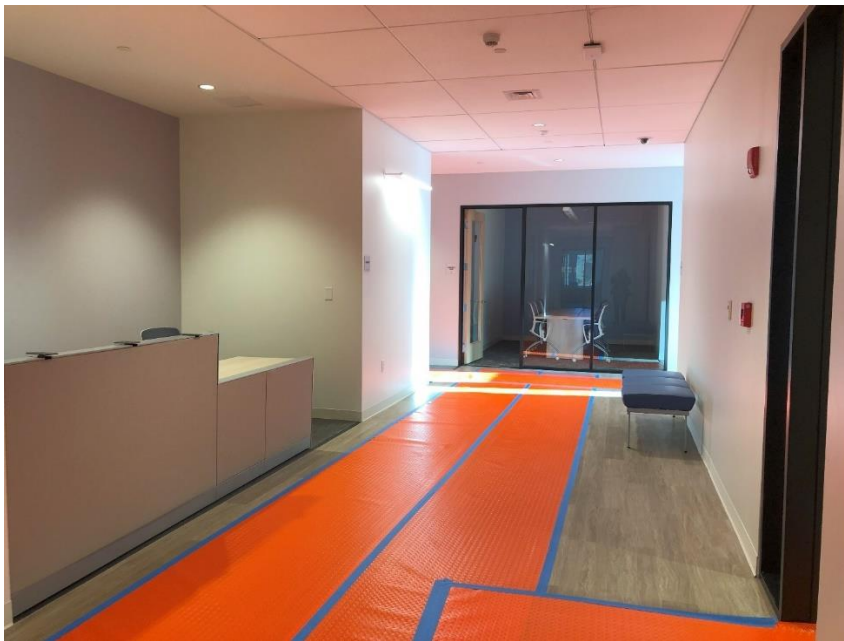
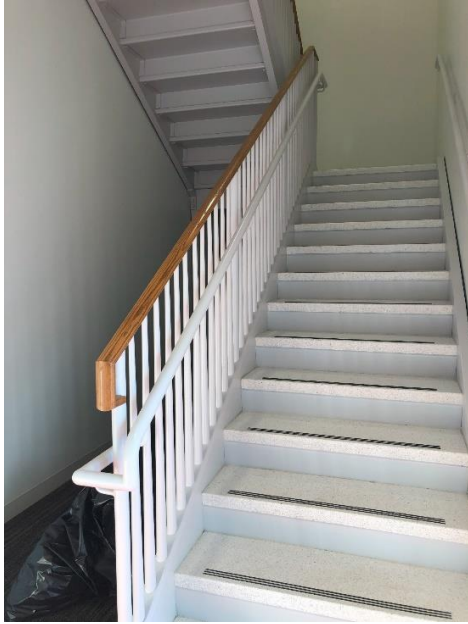
A separate dishwashing station is adjacent to the food prep and cooking area.



The kitchen includes a walk-in cooler and freezer, walk-in pantry, and gas range under an exhaust hood that is large enough to cover additional equipment that has yet to be purchased and installed.

## SUDBURY PUBLIC SCHOOLS ADMINISTRATION

Back at the Sudbury Public Schools Administration entry, the vestibule includes an elevator and stair leading to the offices on the second floor.



The reception desk is just inside the door to at the top of the stair and elevator. A small conference room is to the right.



To your left the corridor leads to a large conference room with a coffee station just outside. The superintendent's suite is across the corridor. (Not visible in this photo)



The conference room will also be divisible once its movable partition arrives.



Next door to the conference room is a large shared office space. Ample windows allow plenty of daylight, a more sustainable lighting option.



Large windows run around three sides of the SPS suite.



New furniture contributes to the light, contemporary feel.



## BUILDING SYSTEMS



The electrical and mechanical room serves the efficient new equipment that will eventually be powered by solar panels on the roof.



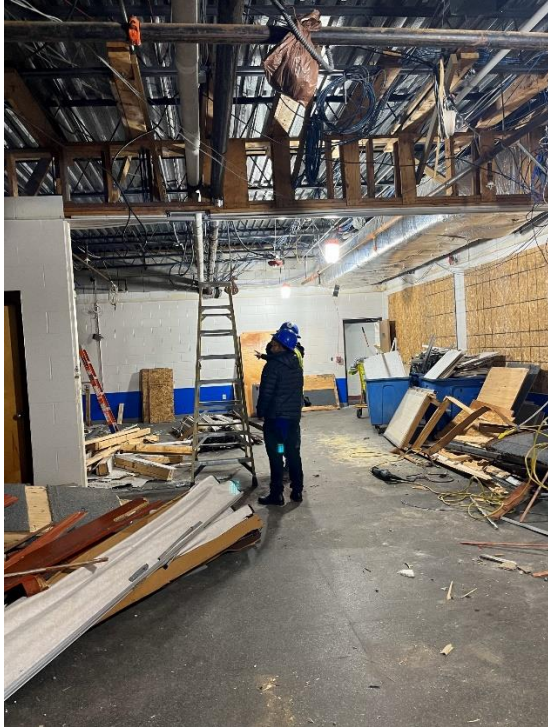
A truckload of old furniture and other items that were left over after everything else was moved to the new building was taken away for repurposing. Everything else was separated into recyclable items and trash. The goal was to minimize the volume of trash going to the landfill.



## COMING UP...PHASE 2

Meanwhile, the construction continues with Phase 2. Demolition began in the old building simultaneously with the first day of moving. (Ain't no rest for the weary!) This phase will include the new Park and Recreation entry and reception area, the Pool Viewing Room and Aquatics Office, and site work for that side of the building (stormwater management systems, paving, basketball/pickleball sportcourt, landscaping, etc.)

Stay tuned!



Demolition in the Pool Viewing Room



Removing the gym flooring.