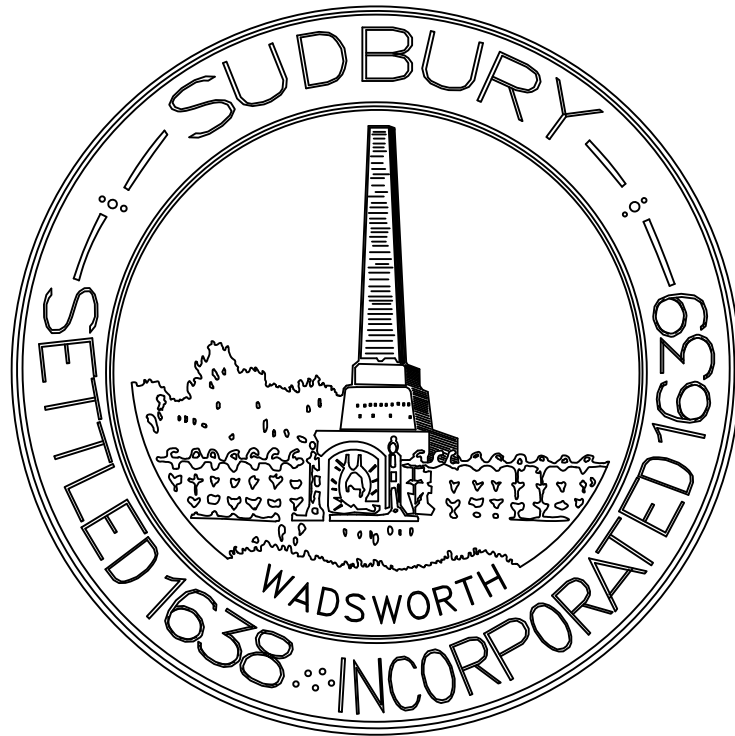
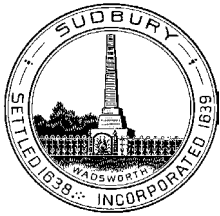


TOWN OF SUDBURY



YEAR 2020 TOWN BOUNDARY PERAMBULATION



TOWN OF SUDBURY

Office of Selectmen

www.sudbury.ma.us

Flynn Building
278 Old Sudbury Rd
Sudbury, MA 01776-1843
978-639-3381
Fax: 978-443-0756

Email: selectmen@sudbury.ma.us

December 9, 2020

Daniel Nason
Director, DPW
275 Old Lancaster Road
Sudbury, MA 01776

IN BOARD OF SUDBURY SELECTMEN

Meeting Date: December 1, 2020

Perambulation of town boundaries

Present: Chairman Janie W. Dretler, Vice-Chair Jennifer S. Roberts, Selectman Daniel E. Carty, Selectman Charles Russo, Selectman William J. Schineller, and Town Manager Henry L. Hayes, Jr.

It was on motion unanimously

VOTED: Vote to authorize the Town Manager, through the Department of Public Works, to locate and mark the of town boundary markers; record such; and provide copy of records to contiguous towns and cities in accordance with G.L. chapter 42, section 2. This is a five-year cycle and applies to years ending with five and zero.

A True Copy Attest: _____

Henry L. Hayes, Jr.
Town Manager – Clerk

cc: E. Jones, Town Counsel Office



December 29, 2020

Mr. Henry L. Hayes
 Town Manager
 275 Old Sudbury Road
 Sudbury, MA 01776
 Subject: Perambulation of Town Bounds

Dear Mr. Henry Hayes

In accordance with MGL Chapter 42, Section 2, the Engineering Department performed the perambulation of all Town bounds during the months of November and December 2020 and reported as follows:

| # | Location | Condition | Comments |
|---|---------------------------------|-----------|---|
| 1 | Framingham-Marlborough- Sudbury | Good | |
| 2 | Hudson-Marlborough-Sudbury | N/A | Unmarked point in railroad embankment |
| 3 | Hudson-Marlborough-Sudbury | Good | Witness mark |
| 4 | Hudson-Stow-Sudbury | Good | Leaning 12" northeasterly |
| 5 | Maynard-Stow-Sudbury | Good | |
| 6 | Maynard-Sudbury 1 | Good | |
| 7 | Acton-Concord-Maynard-Sudbury | Good | |
| 8 | Concord-Lincoln-Wayland-Sudbury | N/A | Unmarked point in the middle of the Sudbury River |
| 9 | Sudbury-Concord-Lincoln-Wayland | Good | Witness mark found 1" Iron rod in large boulder |

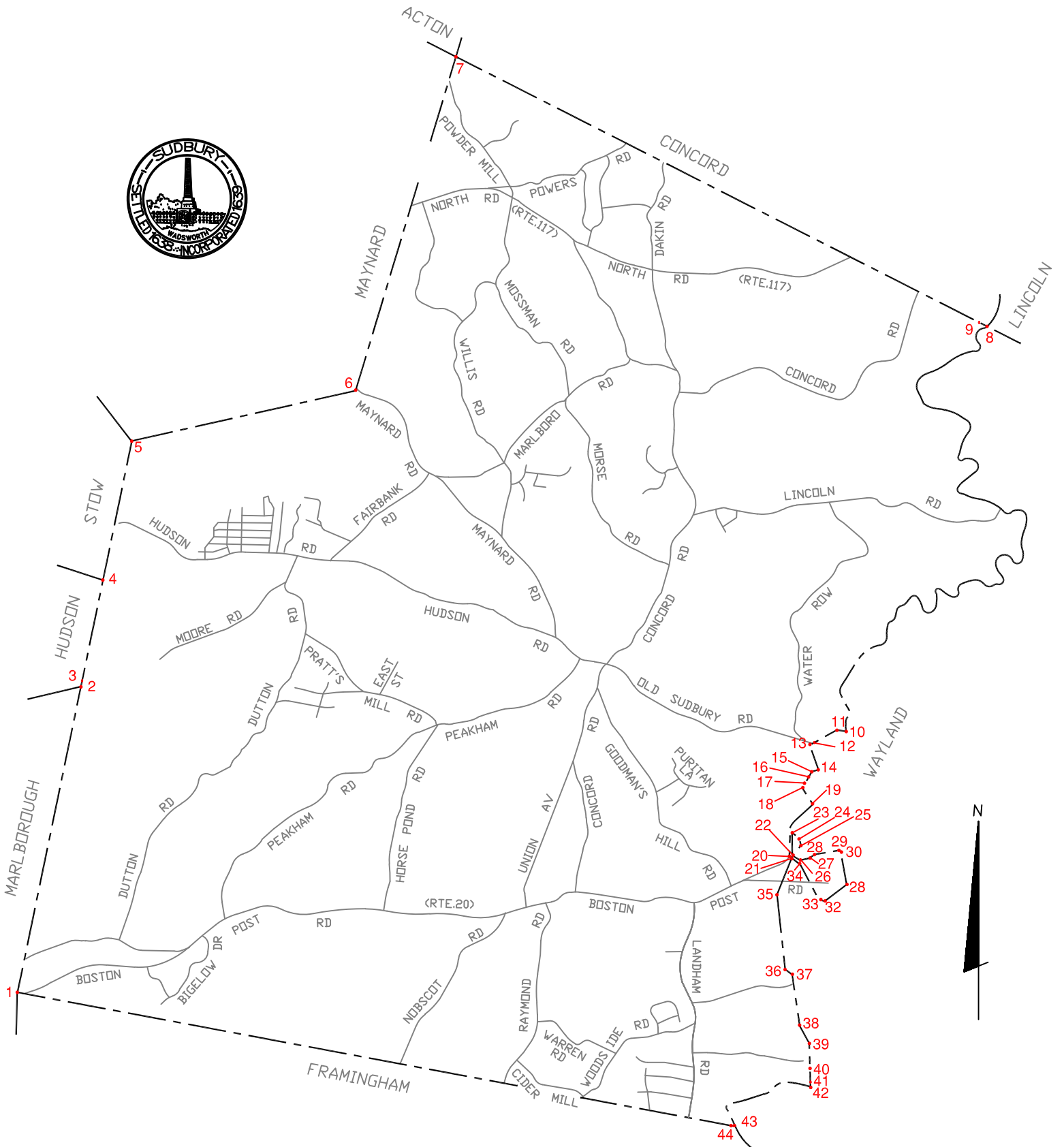
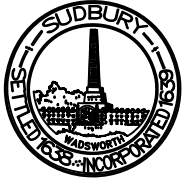
| | | | |
|----|-------------------------|------|---|
| 10 | Sudbury-Wayland 1 | N/A | Unmarked point in the center of the Sudbury River |
| 11 | Sudbury-Wayland 2 | N/A | Unable to recover because of water level of Sudbury River |
| 12 | Sudbury-Wayland 3 | N/A | Unable to recover under Rt. 27 |
| 13 | Sudbury-Wayland 4 | Good | |
| 14 | Sudbury-Wayland 5 | Good | |
| 15 | Sudbury-Wayland 6 | Good | Leaning 6" easterly |
| 16 | Sudbury-Wayland 7 | Good | Leaning 12" southwesterly |
| 17 | Sudbury-Wayland 8 | Good | |
| 18 | Sudbury-Wayland 9 | | Unable to locate under ice. |
| 19 | Sudbury-Wayland 10 | Good | |
| 20 | Sudbury-Wayland 11 | Good | |
| 21 | Sudbury-Wayland 12 & 27 | Good | |
| 22 | Sudbury-Wayland 13 & 17 | Good | Leaning 4" northwesterly |
| 23 | Sudbury-Wayland 14 | Good | |
| 24 | Sudbury-Wayland 15 | Good | |
| 25 | Sudbury-Wayland 16 | Good | |
| 26 | Sudbury-Wayland 18 | Good | |
| 27 | Sudbury-Wayland 19 | | Unable to recover paved over |
| 28 | Sudbury-Wayland 20 | Good | |
| 29 | Sudbury-Wayland 21 | Good | Leaning 12" northerly |
| 30 | Sudbury-Wayland 22 | Good | |
| 31 | Sudbury-Wayland 23 | Good | Leaning 12" northwesterly |
| 32 | Sudbury-Wayland 24 | Good | |
| 33 | Sudbury-Wayland 25 | Good | |
| 34 | Sudbury-Wayland 26 | Good | |
| 35 | Sudbury-Wayland 28 | Good | |
| 36 | Sudbury-Wayland 30 | Good | |
| 37 | Sudbury-Wayland 31 | Good | |
| 38 | Sudbury-Wayland 32 | Good | |
| 39 | Sudbury-Wayland 33 | Good | |
| 40 | Sudbury-Wayland 34 | Good | |

| | | | |
|----|------------------------------------|------|---|
| 41 | Sudbury-Wayland 29 Witness Mark | Fair | Entangled in roots of fallen tree |
| 42 | Sudbury-Wayland 29 | N/A | Unmarked point in the middle of the Sudbury River |
| 43 | Framingham-Sudbury-Wayland | N/A | Unmarked point in the center of the Sudbury River |
| 44 | Framingham-Sudbury-Wayland | Good | Witness marker found |

Respectfully submitted

Daniel F. Nason
Director of DPW

dn/ps
attachments



BOUNDARY MARKER LOCATIONS 2020

**Boundary Location 1
Framingham/Marlborough/Sudbury
2020**



**Boundary Location 2
Hudson-Marlborough-Sudbury
2020**

The corner is an unmarked point in the railroad embankment.

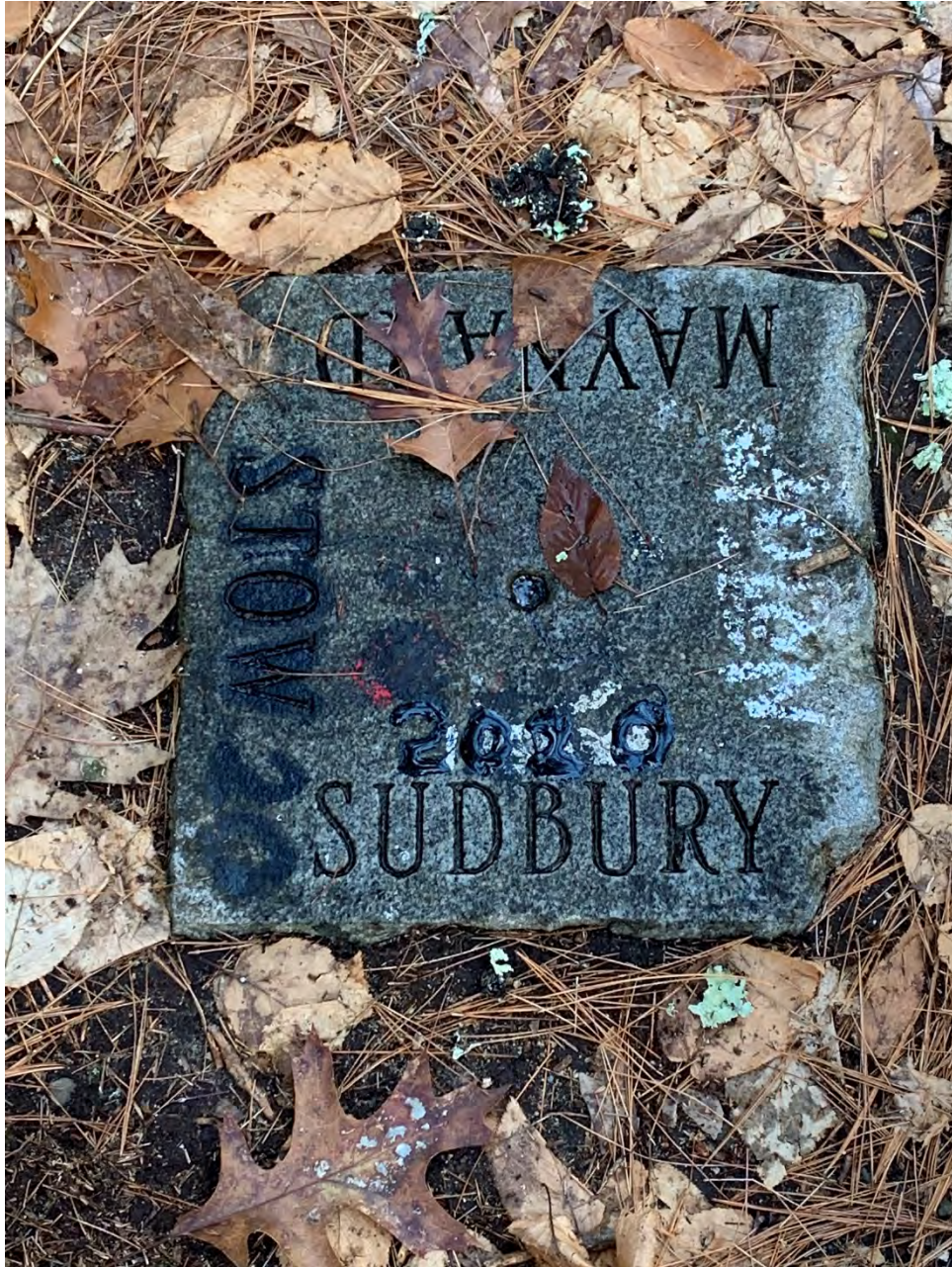
**Boundary Location 3
Witness Mark
Hudson-Marlborough-Sudbury
2020**



**Boundary Location 4
Hudson-Stow-Sudbury
2020**



**Boundary Location 5
Maynard-Stow-Sudbury
2020**



**Boundary Location 6
Maynard-Sudbury 1
2020**



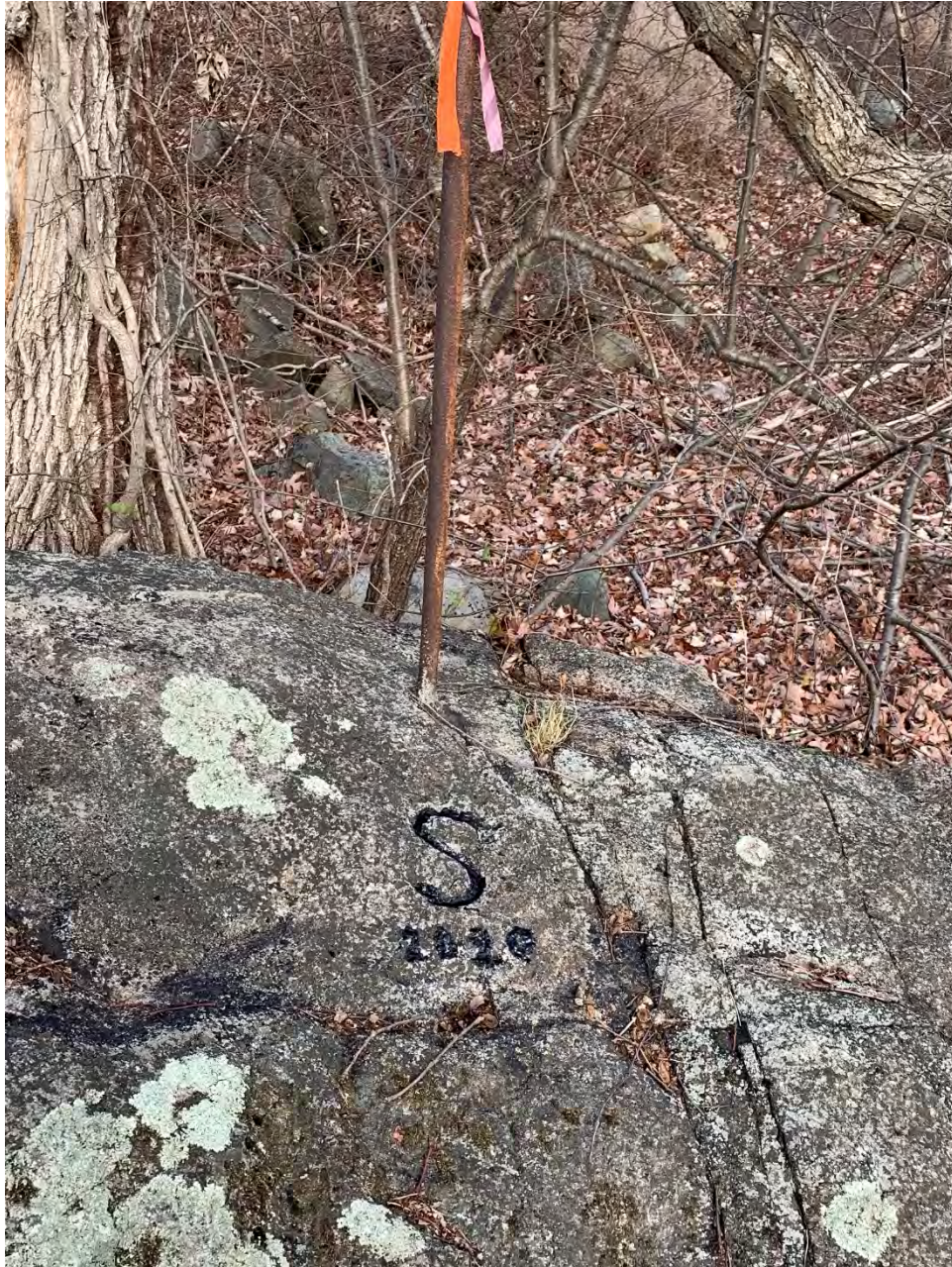
**Boundary Location 7
Acton-Concord-Maynard-Sudbury
2020**



**Boundary Location 8
Concord-Lincoln-Wayland-Sudbury
2020**

The corner is an unmarked point in the middle of the Sudbury River.

**Boundary Location 9
Concord-Lincoln-Wayland-Sudbury
2020**



**Boundary Location 10
Sudbury-Wayland 1
2020**

The corner is an unmarked point in the center of the Sudbury River.

Boundary Location 11
Sudbury-Wayland 2
2020

Unable to recover because of the water level of the Sudbury River.

**Boundary Location 12
Sudbury-Wayland 3
2020**

Unable to locate under pavement of Route 27.

**Boundary Location 13
Sudbury-Wayland 4
2020**



Boundary Location 14
Sudbury-Wayland 5
2020



**Boundary Location 15
Sudbury-Wayland 6
2020**



**Boundary Location 16
Sudbury-Wayland 7
2020**



**Boundary Location 17
Sudbury-Wayland 8
2020**



**Boundary Location 18
Sudbury-Wayland 9
2020**

Unable to locate marker under ice.

Boundary Location 19
Sudbury-Wayland 10
2020



**Boundary Location 20
Sudbury-Wayland 11
2020**



**Boundary Location 21
Sudbury-Wayland 12 & 27
2020**



Boundary Location 22
Sudbury-Wayland 13 & 17
2020



**Boundary Location 23
Sudbury-Wayland 14
2020**



**Boundary Location 24
Sudbury-Wayland 15
2020**



**Boundary Location 25
Sudbury-Wayland 16
2020**



**Boundary Location 26
Sudbury-Wayland 18
2020**



**Boundary Location 27
Sudbury-Wayland 19
2020**

Unable to recover paved over.

**Boundary Location 28
Sudbury-Wayland 20
2020**



**Boundary Location 29
Sudbury-Wayland 21
2020**



Boundary Location 30
Sudbury-Wayland 22
2020



**Boundary Location 31
Sudbury-Wayland 23
2020**



**Boundary Location 32
Sudbury-Wayland 24
2020**



**Boundary Location 33
Sudbury-Wayland 25
2020**



**Boundary Location 34
Sudbury-Wayland 26
2020**



**Boundary Location 35
Sudbury-Wayland 28
2020**



**Boundary Location 36
Sudbury-Wayland 30
2020**



**Boundary Location 37
Sudbury-Wayland 31
2020**



**Boundary Location 38
Sudbury-Wayland 32
2020**



Boundary Location 39
Sudbury-Wayland 33
2020



**Boundary Location 40
Sudbury-Wayland 34
2020**



**Boundary Location 41
Sudbury-Wayland 29
Witness Mark
2020**



**Boundary Location 42
Sudbury-Wayland 29
2020**

The corner is an unmarked point in the middle of the Sudbury River.

**Boundary Location 43
Framingham-Sudbury-Wayland
2020**

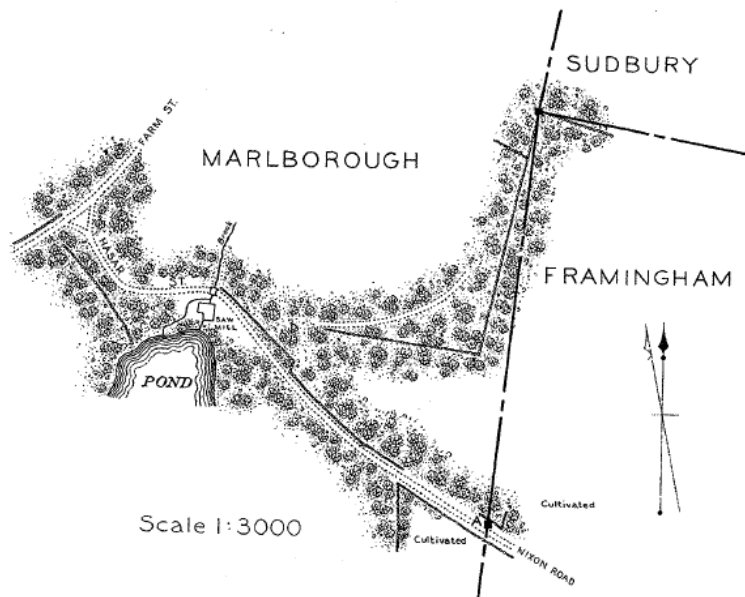
The corner is an unmarked point in the middle of the Sudbury River.

**Boundary Location 44
Framingham-Sudbury-Wayland
Witness Mark
2020**



Historical Data from:
Boundary lines
of
Acton, Bedford, Concord, Lincoln
Maynard, Sudbury, Wayland
Weston
1904

FRAMINGHAM-MARLBOROUGH-SUDBURY



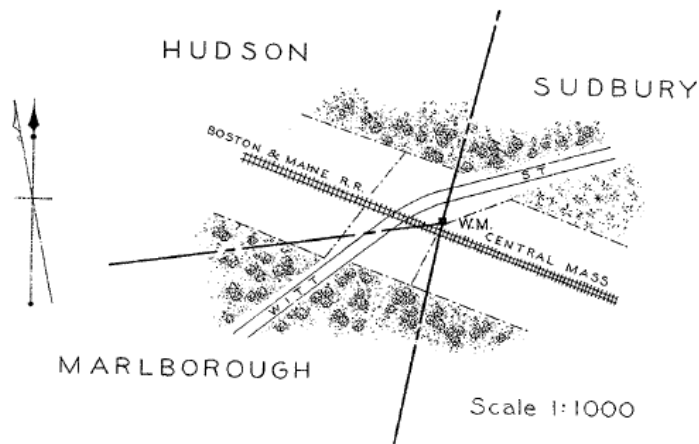
CORNER OF

FRAMINGHAM - MARLBOROUGH - SUDBURY.

LOCATION. — The corner is situated at an angle of walls, about 860 feet northeasterly from Hagar street, at a point 200 feet southeast of a sawmill and about 635 feet southeast of the junction of Hagar street with Farm street in Marlborough.

MARK. — The corner mark is a rough granite monument, irregular in shape, 4.3 feet in height and about 12 x 16 inches in section. The letter *m* is cut on the west face, *s* on the northeast face and *r* on the southeast face.

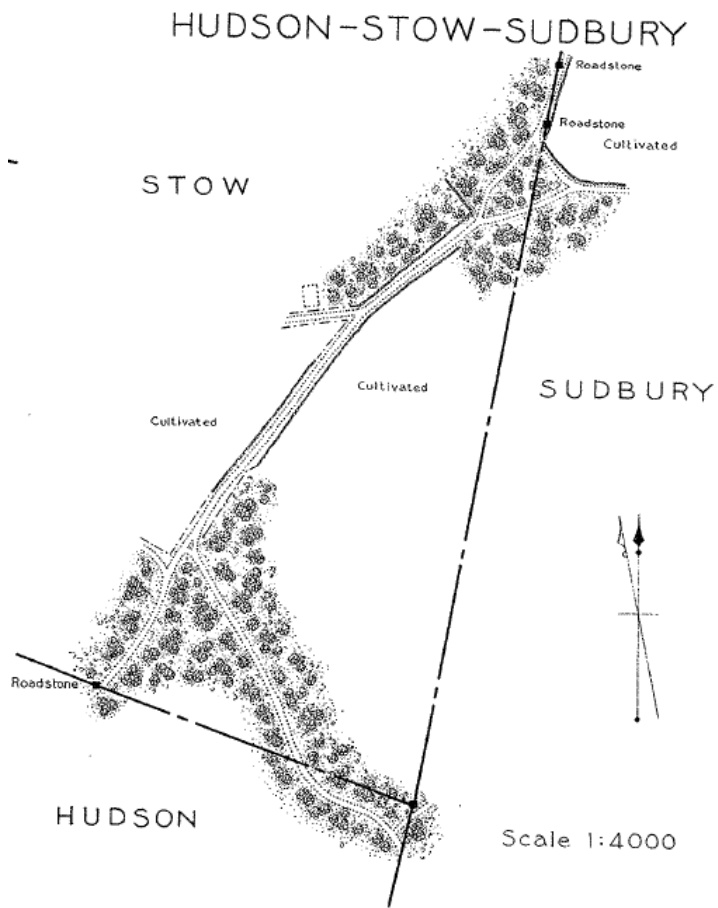
HUDSON-MARLBOROUGH-SUDBURY



CORNER OF HUDSON-MARLBOROUGH-SUDBURY AND W.M.

LOCATION.—The corner is an unmarked point in the railroad embankment of the Central Massachusetts division of the Boston and Maine railroad, near the southeasterly side of the Witt street crossing; it is south $11^{\circ} 52'$ west and 4 feet distant from the witness mark, which stands 1.5 feet north of the fence at the southeasterly side of the street and 4.7 feet northeast of the center of the northerly rail.

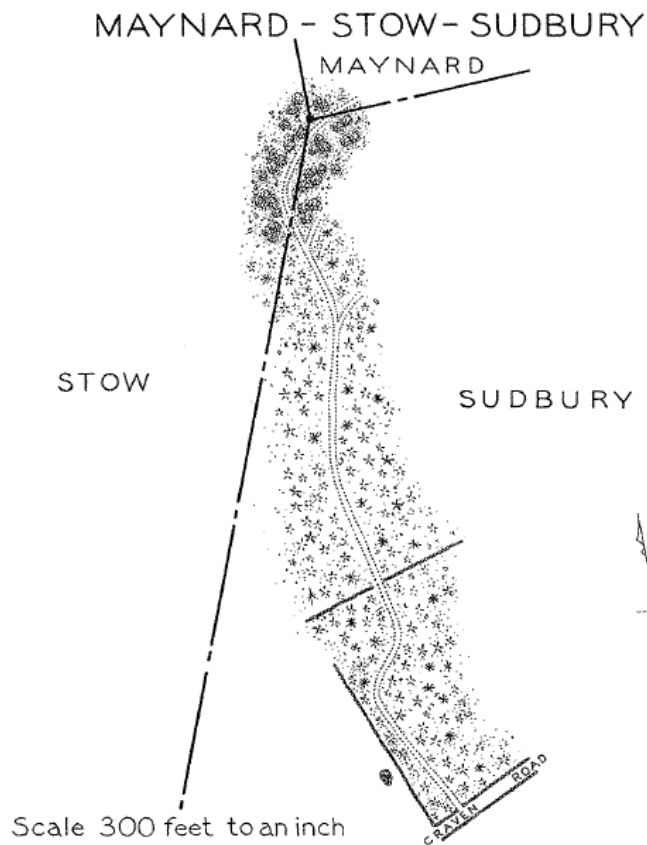
MARK.—The witness mark is a rough granite monument 1.7 feet in height and about 5 x 9 inches in section. The letter M is cut on the west face and S on the east face; M is painted on the south face and H on the north face.



CORNER OF
HUDSON-STOW-SUDBURY.

LOCATION.—The corner is situated on level woodland, about 700 feet east of the roadstone on the westerly side of Craven road and about 1-4 of a mile easterly of Whites pond.

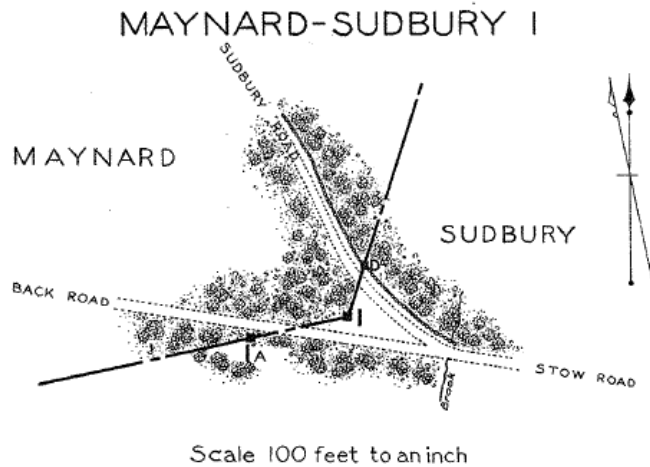
MARK.—The corner mark is a rough granite monument 4 feet in height and 6 x 7 inches in section. The letter s is cut on the north face, s on the east face and H on the south face.



CORNER OF
MAYNARD-STOW-SUDBURY.

LOCATION. — The corner is situated in small oak woods, 18 feet north of a cart path, at a point about 1,800 feet northerly from the Craven road.

MARK. — The corner mark is a rough split granite monument very irregular in shape, 3.3 feet in height and 8 1-2 x 10 inches in section at the base, being much smaller at the top. The letter s is cut on the south face, s on the west face and M on the east face.



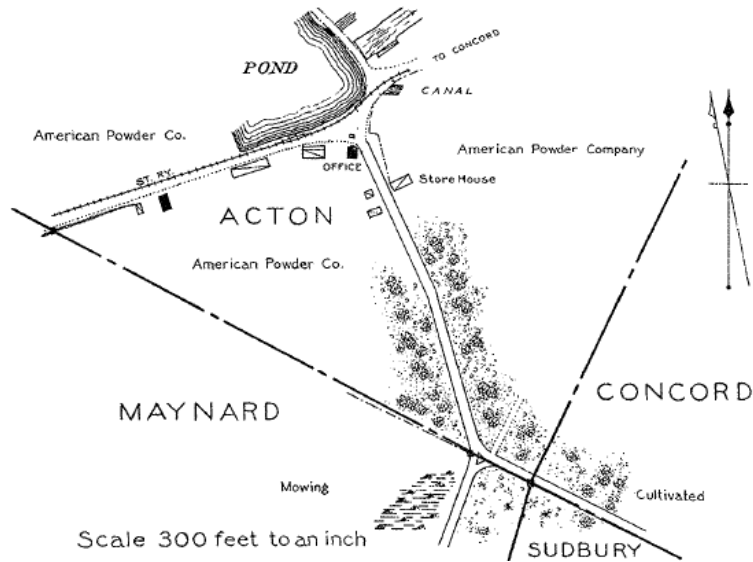
MAYNARD-SUDBURY I.

LOCATION. — The corner is situated at the intersection of the Sudbury road in Maynard, called Stow road in Sudbury, with Back road, at the foot of the northwestern slope of Willis hill.

MARK. — The corner mark is a rough split granite monument of dark gray color, somewhat irregular in shape, 6.5 feet in height and about 8 x 20 inches in section, and used as a guide post. The letter M is painted on the northwest face and S on the southeast face, the latter being reversed. The southeast face is painted white for a distance of 2.5 feet down from the top and is lettered thus: —

\leftarrow STOW
 MAYNARD
 CONCORD
 ACTON. \rightarrow

ACTON-CONCORD-MAYNARD-SUDBURY

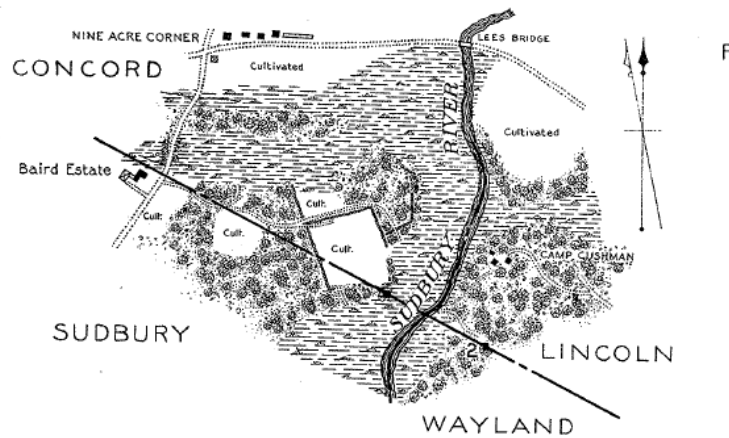


CORNER OF ACTON-CONCORD-MAYNARD-SUDBURY.

LOCATION.—The corner is situated on the southwesterly side of the road from South Acton to North Sudbury, back of the American Powder mills, at a point 160 feet southeast of the intersection of the road with a cross road leading southwesterly to the Great Boston road. It stands in scrub oaks and maples, 10 feet from the center of the traveled way.

MARK.—The corner mark is a rough split granite monument 4.3 feet in height and about 7 1/4 x 8 inches in section. The letter *s* is cut on the southwest face, *A* on the northwest face, and *c* on the northeast face. The letter *M* is painted on the southwest face.

CONCORD-LINCOLN-WAYLAND-SUDBURY
 LINCOLN-WAYLAND 2



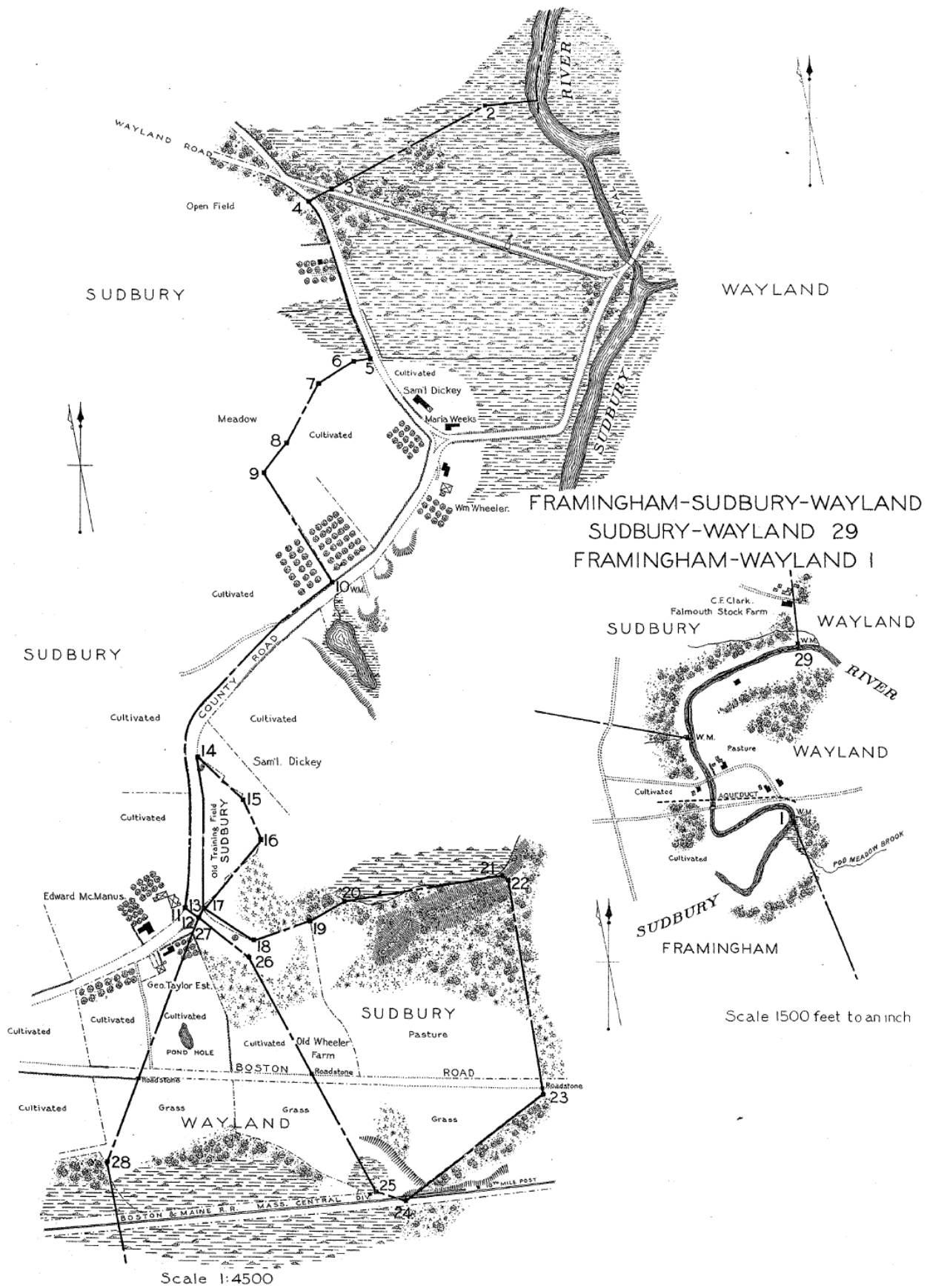
Scale 1000 feet to an inch

CORNER OF
 CONCORD-LINCOLN-SUDBURY-WAYLAND AND W.M.

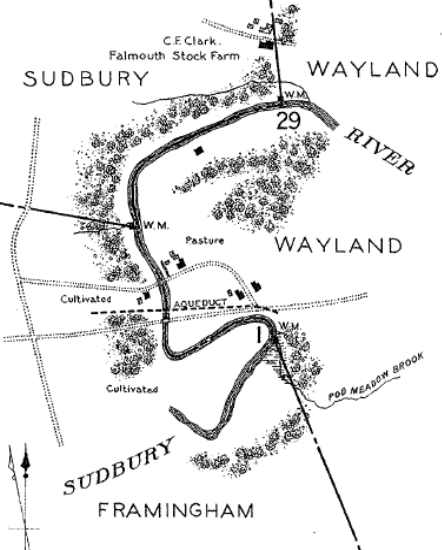
LOCATION.—The corner is an unmarked point in the middle of Sudbury river, south $62^{\circ} 07'$ east and about 375 feet distant from the witness mark, which is situated at the easterly end of a stone wall, on the westerly bank of the river; it is about 335 feet from the shore and about one-half mile easterly from Corner road in Sudbury.

MARK.—The witness mark is an iron bar leaded into a 1-inch drill hole 1 foot in depth, sunk into a large boulder about 5 feet in height and 20 x 30 feet in section, which is commonly known as "Bound rock."

SUDBURY-WAYLAND 1 TO 28



FRAMINGHAM-SUDBURY-WAYLAND
 SUDBURY-WAYLAND 29
 FRAMINGHAM-WAYLAND 1



SUDBURY-WAYLAND 1.

(FOR SKETCH SEE SHEET 29.)

LOCATION.—The corner is an unmarked point in the center of Sudbury river opposite to and about 40 feet from the mouth of an old line ditch between the meadows now or formerly of William Baldwin and Eliakim Rice, at a point 400 feet down stream from the junction of the old bed of the river and the canal across the Wayland causeway, about 950 feet northwest of the new stone arched bridge over the Canal at the new Wayland road.

SUDBURY-WAYLAND 2.

(FOR SKETCH SEE SHEET 29.)

LOCATION.—The corner is situated at an angle in the line ditch between the meadows now or formerly of William Baldwin and Eliakim Rice, at a point north $62^{\circ} 07'$ east and 911 feet distant from the bend at corner 3 on the northerly side of the new Wayland road, 205 feet east of its intersection with the old County road to South Sudbury.

MARK.—The corner mark is a rough granite monument of unknown length, 0.4 of a foot above the level of the marsh, about 7 inches in width on the north and southwest faces, 4 inches on the northeast face and 6 inches on the southeast face. The letter s is cut on the north face, and w on the southeast face below the level of the marsh, the old ditch having been partly filled in.

SUDBURY-WAYLAND 3.

LOCATION.—The corner is situated on the northerly side of the new Wayland road, 12 feet from the center of the traveled way, at a point about 205 feet easterly of its intersection with the old County road to South Sudbury.

MARK.—The corner mark is a rough granite monument 4 feet in height and about 7 1-2 x 8 1-4 inches in section. The letter w is cut on the southeast face, and s on the northwest face.

SUDBURY-WAYLAND 4.

LOCATION.—The corner is situated against the face of the wall on the southwest side of the old County road to South Sudbury, at a point about 150 feet southeast of its junction with the new Wayland road.

MARK.—The corner mark is a rough granite monument about 3.8 feet in height and 7 x 8 1-4 inches in section. The letter w is cut on the southeast face and s on the northwest face.

SUDBURY-WAYLAND 5.

LOCATION.—The corner is situated on the westerly side of the old County road to South Sudbury, 20 feet west of the center of the traveled way, at a point about 300 feet northwest of Samuel Dickey's house which stands on the easterly side of the road in Wayland. The bound is in the middle of an old ditch and opposite a double line of parallel ditches which extend due east across the meadows.

MARK.—The corner mark is a rough granite monument 4.2 feet in height and about 6 1-2 x 8 inches in section, being slightly smaller at the top than at the base. The letter s is cut on the northwest face and w on the southeast face.

SUDBURY-WAYLAND 6, 7, 8 AND 9.

LOCATION.—The corners are situated near together, on the bank of a ditch, along the westerly line of a cultivated field and separating it from meadow land, opposite the houses of Samuel Dickey, Marie Weeks and William Wheeler in Wayland.

MARKS.—The corner marks are rough granite monuments about 4 feet in height and varying in section from 7 1-2 x 6 inches to 7 x 11 inches. They are lettered s w.

SUDBURY-WAYLAND 10 AND W.M.

LOCATION.—The corner is an unmarked point at a junction of walls, north 33° 30' west and about 10 feet distant from the witness mark, which is situated in a wall against the butt of a cherry tree which has been sawed off, and is about 10 feet northwesterly from the junction of this wall with the wall on the northwesterly side of the old County road to South Sudbury, at a point about 850 feet southwest of William Wheeler's house.

MARK.—The witness mark is a rough granite monument 3.7 feet in height and 7 x 7 inches in section. The letter s is cut on the southwest face and w on the northeast face.

SUDBURY-WAYLAND 11.

LOCATION.—The corner is situated on the northwesterly side of the old County road leading to South Sudbury, south 66° 30' east and 44 feet distant from the southeasterly corner of the main barn of Edward McManus in Sudbury.

MARK.—The corner mark is a rough granite monument 3.3 feet in height and averaging about 7 x 9 inches in section. The letter w is cut on the southeast face and s on the northwest face.

SUDBURY-WAYLAND 12 AND 27 (SAME POINT).

LOCATION.—The corner is situated 2 feet east of the wall on the easterly side of the old County road to South Sudbury, being directly across the street from the bound near Edward McManus' barn in Sudbury, at the westerly end of the neck of land leading to the Wheeler farm in Sudbury.

MARK.—The corner mark is a rough granite monument 3.7 feet in height and about 6 x 9 1-2 inches in section. The letter w is cut on the southeast face and s on the northwest face.

SUDBURY-WAYLAND 13, 14, 15, 16 AND 17.

LOCATION.—These corners are situated along the borders of the old Sudbury training field, on the easterly side of the old County road between Wayland and South Sudbury, and near the house of Edward McManus in Sudbury. Numbers 13 and 17 are the same point.

MARKS.—The corner marks are rough granite monuments about 4 feet in height and varying in section from 5 x 7 inches to 6 x 9 inches. They are lettered s w.

SUDBURY-WAYLAND 18, 19, 20, 21, 22, 23, 24, 25 AND 26.

LOCATION.—The corners are situated along the border line of the old Wheeler farm, which is on both sides of the Boston road and about one-half mile east of its junction with the old County road from Wayland to South Sudbury. No. 18 is about 110 feet east of a large white oak tree at the entrance or neck of land leading to the farm, and No. 26 is on the opposite side of the entrance. No. 19 is near the corner of a fence. Nos. 20 and 21 are on the southerly edge of a swamp, from which the upland rises abruptly. No. 22 is at the summit of a ridge. No. 23 is 30 feet south of the roadstone on the Boston road. No. 24 is at the foot of the southerly slope of the embankment of the Boston and Maine railroad, Central Mass. division, 388 feet west of the 18th mile post. No. 25 is about in the north location line of the same railroad, near No. 24.

MARKS.—The corner marks are rough split granite monuments, varying in height from 3 to 4 3-4 feet, and in section from 5 x 8 inches to 7 x 10 inches. They are lettered s w.

SUDBURY-WAYLAND 28.

LOCATION.—The corner is situated in low, marshy land, 35 feet northeast of the edge of woods and about 450 feet south of the Boston road, at a point where the boundary line crosses the same; it leans against the trunk of a partly decayed white oak tree 18 inches in diameter, and is between the highway and the Massachusetts Central division of the Boston and Maine railroad.

MARK.—The corner mark is a rough split granite monument 4.5 feet in height and about 6 1-2 x 10 inches in section; it is split on a curve so that it follows the shape of the tree. The letter s is cut on the west face and w on the east face.

SUDBURY-WAYLAND 29 AND W.M.

LOCATION.—The corner is an unmarked point in the middle of Sudbury river, south 10° 05' east and about 43 feet distant from the witness mark which is situated about 5 feet north of the northerly bank of the river, at a point about 850 feet south of the Falmouth Stock Farm in Sudbury.

MARK.—The witness mark is a rough split granite monument 4 feet in height and about 6 1-2 x 8 inches in section. The letter s is cut on the southwest face and w on the northeast face.

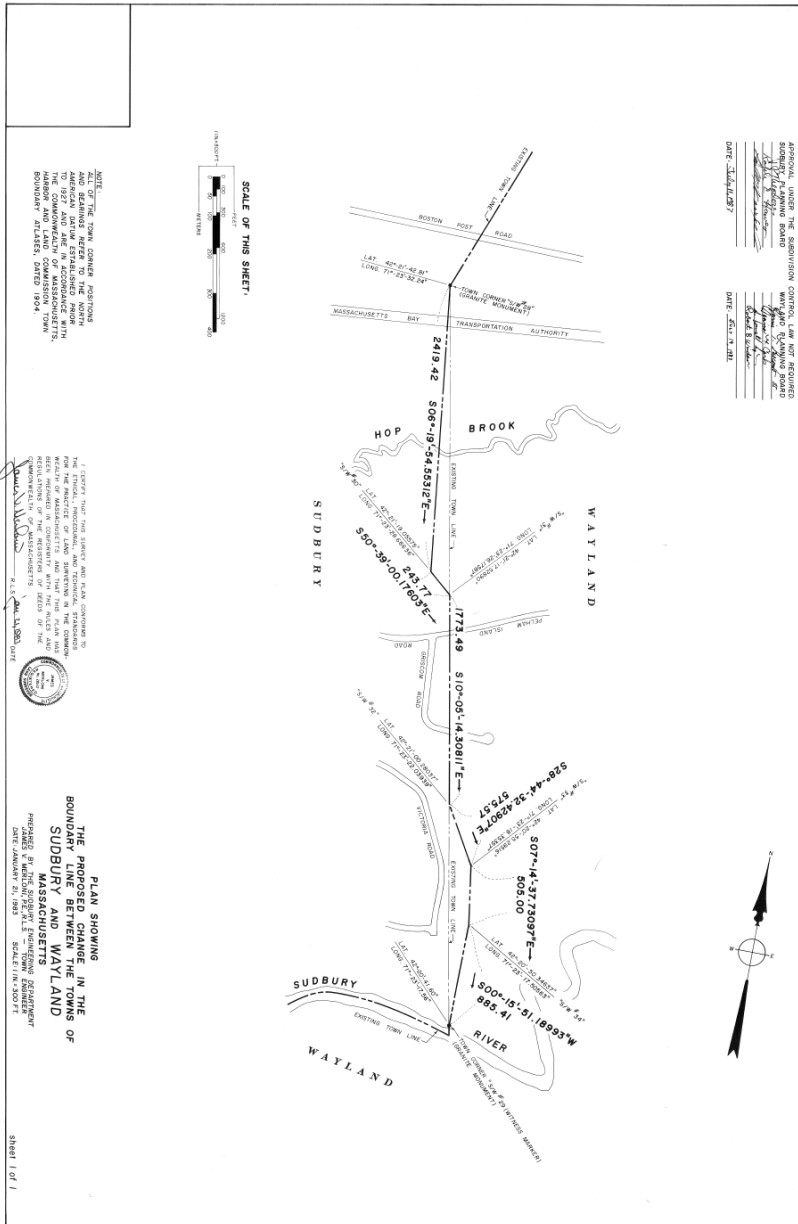
CORNER OF
FRAMINGHAM-SUDBURY-WAYLAND AND W.M.

(FOR SKETCH SEE SHEET 29.)

LOCATION. — The corner is an unmarked point in the middle of Sudbury river, south $79^{\circ} 19'$ east and about 43 feet distant from the witness mark, which is situated on the north bank of a ditch 5 feet wide, about 5 feet west of the westerly bank of the river and 10 feet north of a large elm tree; it is surrounded by bushes and is about $\frac{3}{8}$ of a mile east of Elm street, Framingham, or Landham road in Sudbury.

MARK. — The witness mark is a very irregularly-shaped field stone about 3 feet in height and about $7\frac{1}{2} \times 12$ inches in section, the northerly face being very narrow at the center. The letter s is cut on the west face, F on the south face and w on the east face.

Historical Data from: Acts, 1983. - Chap. 170



APPROVED UNDER THE SUPERVISION CONTROL AND NOT REQUIRED
SIGNATURE OF REGISTERED ENGINEER
DATE: 12/14/2017

APPROVED UNDER THE SUPERVISION CONTROL AND NOT REQUIRED
SIGNATURE OF REGISTERED ENGINEER
DATE: 12/14/2017

SCALE OF THIS SHEET
1" = 200'

NOTE: ALL TOWN CORNER POSITIONS AND DISTANCES REFER TO THE NORTH AND SOUTHERN MERIDIAN. THIS PLAN IS TO BE CONSIDERED AS A CORRECTIVE PLAN TO THE 1927 AND 1928 RECORDS WITH THE TOWN COMMISSIONERS OF SUDBURY AND WAYLAND, MASSACHUSETTS, DATED 1924.

THE CERTIFICATE OF THE TOWN COMMISSIONERS OF SUDBURY AND WAYLAND, MASSACHUSETTS, IS HEREBY REPRODUCED FOR THE RECORD OF THIS SURVEY. THE RECORDS OF THE TOWN COMMISSIONERS OF SUDBURY AND WAYLAND, MASSACHUSETTS, ARE HEREBY REPRODUCED FOR THE RECORD OF THIS SURVEY. THE RECORDS OF THE TOWN COMMISSIONERS OF SUDBURY AND WAYLAND, MASSACHUSETTS, ARE HEREBY REPRODUCED FOR THE RECORD OF THIS SURVEY.

PLAN SHOWING
THE PROPOSED CHANGE IN THE
BOUNDARY BETWEEN THE TOWNS OF
SUDBURY AND WAYLAND,
MASSACHUSETTS
PREPARED BY THE SURVEY ENGINEERING DEPARTMENT
DATE: JANUARY 21, 1983 SCALE: 1" = 200 FT.

Chap. 170. AN ACT RELATIVE TO THE BOUNDARY LINE
BETWEEN THE TOWNS OF SUDBURY AND WAY-
LAND.

Be it enacted, etc., as follows:

SECTION 1. The following described line shall hereafter constitute a portion of the boundary line between the towns of Sudbury and Wayland:

Beginning at a rough split granite monument 4.5 feet in height and about 6½ x 10 inches in section marking the present corner of Sudbury-Wayland-28 (S-W-28) at latitude 42°-21'-42.81" and longitude 71°-23'-32.24", thence following a bearing S 6°-19'-54.55312" E a distance of 2419.42 feet to a corner of Sudbury-Wayland-30 (S-W-30) at latitude 42°-21'-19.05575" and longitude 71°-23'-28.68636"; thence following a bearing S 50°-39'-0.17603" E a distance 243.77 feet to a corner Sudbury-Wayland-31 (S-W-31) at latitude 42°-21'-17.52890" and longitude 71°-23'-26.17587"; thence following a bearing S 10°-5'-14.30811" E a distance of 1773.49 feet to a corner Sudbury-Wayland-32 (S-W-32) at latitude 42°-21'-0.28037" and longitude 71°-23'-22.03939"; thence following a bearing S 28°-44'-32.42907" E a distance of 575.57 feet to a corner Sudbury-Wayland-33 (S-W-33) at latitude 42°-20'-55.29516" and longitude 71°-23'-18.35357"; thence following a bearing S 7°-14'-37.73097" E a distance of 505.00' to a corner Sudbury-Wayland-34 (S-W-34) at latitude 42°-20'-50.34637" and longitude 71°-23'-17.50563"; thence following a bearing S 0°-15'-51.18993" W a distance of 885.41 feet to the present Sudbury-Wayland-29 (W.M.) corner, a granite monument 4 feet in height and about 6½ x 8 inches in section marked S-W at latitude 42°-20'-41.60" and longitude 71°-23'-17.56".

All of the foregoing positions and bearings refer to the North

149

ACTS, 1983. - Chaps. 171, 172.

American Datum established prior to nineteen hundred and twenty-seven and are in accordance with the Commonwealth of Massachusetts, Harbor and Land Commission Town Boundary Atlases, dated nineteen hundred and four.

SECTION 2. This act shall take effect upon its passage.

Approved June 15, 1983.