



Protect Sudbury Inc.

Activism starts with your participation

HELP SUDBURY STAY BEAUTIFUL.

Eversource Energy plans to decimate over 40 acres of trees and wildlife habitat to build electrical redundancy in our back yards. Help us save our land, and bury the electrical lines under existing roads.

[LEARN MORE](#)



Protect Sudbury Inc.

Who We Are

Grass roots organization started by a handful of Sudbury residents who have organized and rallied over 1,300 neighbors, business owners, friends and the community over the installation of high voltage transmission lines through the heart of Sudbury.

Mission Statement

To create public awareness of a proposed powerline project between Sudbury and Hudson, garner support to stop the project and actively work through legal and political action to prevent the construction of the proposed line on the abandoned MBTA Central Massachusetts railroad.

-



Protect Sudbury Inc.

Why Are We Here

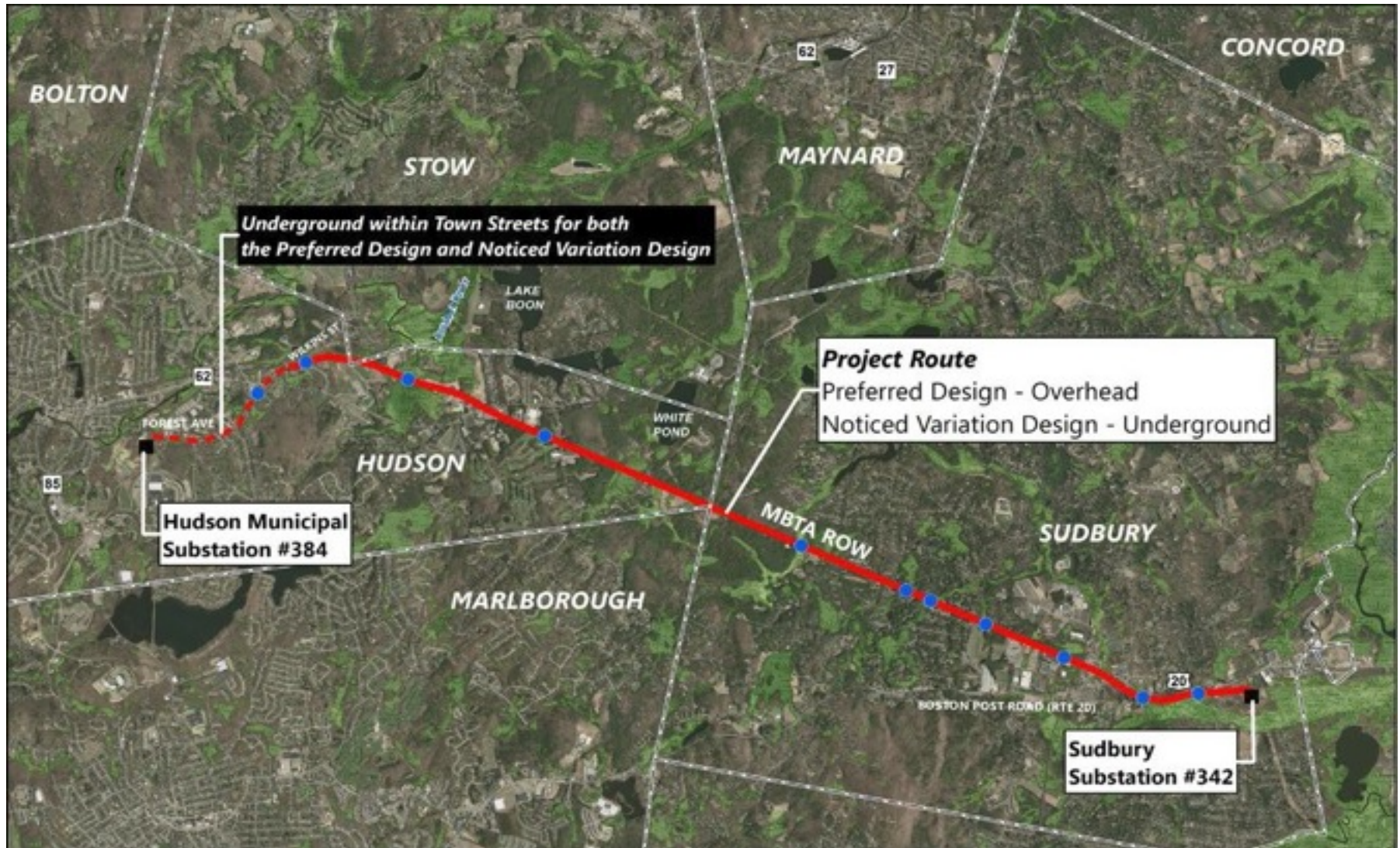
- 1. Establish the official position of the town on this matter**
- 2. Determine the extent to which the town will oppose the Eversource proposal and lobby for other viable alternatives.**
- 3. Establish a liaison with the town in order to jointly oppose this project**



Eversource “Reliability” Project

- On 2/2/16, Eversource representatives served notice to the Town of Sudbury of their intention to site a 115kv high voltage transmission line between Sudbury and Hudson.
- Eversource plan would utilize abandoned MBTA railroad bed which runs through the heart of central Sudbury
- Eversource “Preferred Design”
 - Overhead transmission lines
 - 7.6 miles through Sudbury/Hudson
 - Underground transmission lines
 - 1.3 miles in Hudson

Eversource “Reliability” Project





Eversource “Reliability” Project

- **Project Cost - Preferred Overhead Route**
 - Preferred Overhead Siting = \$50 million
 - Eversource = \$45 million
 - Hudson Power and Light = \$5 million
 - Underground MBTA Rail bed Route = \$100 million
 - Eversource = \$95 million
 - Hudson Power and Light = \$5 million



What Eversource Didn't Say ...

- **Requires minimum of an 82 feet 'clear cut' of all trees**

Representative 'Clear Cut'



Representative of Proximity to Homes





What Eversource Didn't Say ...

- Requires minimum of an 82 feet 'clear cut' of all trees
- **Transmission Towers are 72' to 105'in height**

Proposed Monopole Tower



Proposed Monopole Tower





What Eversource Didn't Say ...

- Requires minimum of an 82 feet 'clear cut' of all trees
- Transmission Towers are 72' to 105' in height
- Gravel non-contiguous access road

Representative Access Road





Eversource “Reliability” Project

Benefits to Eversource

Improved Profitability

Benefits to Town of Hudson and Stow

7% Reduction in Electric Rates

Allow Hudson to sell excess capacity

Benefits To Town of Sudbury

NONE



Protect Sudbury Inc.

Our Position

We oppose the construction of a new high voltage transmission line on the 'preferred' route proposed by Eversource.

- We believe that there will be irreparable harm done to environmentally sensitive areas.
- We believe that these lines threaten the health and safety of our families and community.
- We believe that that there will be a significant and long term negative economic impact on all homeowners and businesses within the Town of Sudbury



Protect Sudbury Inc.

Sudbury's History of Self-Determination and Home Rule

- **The Power Line Fight of 1960**
 - The citizens and Town of Sudbury fought Boston Edison for nine years.
 - Supported by the United States Secretary of the Interior
 - Supported by United States Senator Ted Kennedy
 - Ultimately prevailed when the Massachusetts Supreme Court ruled in favor of town's position.
 - It was worth the fight!

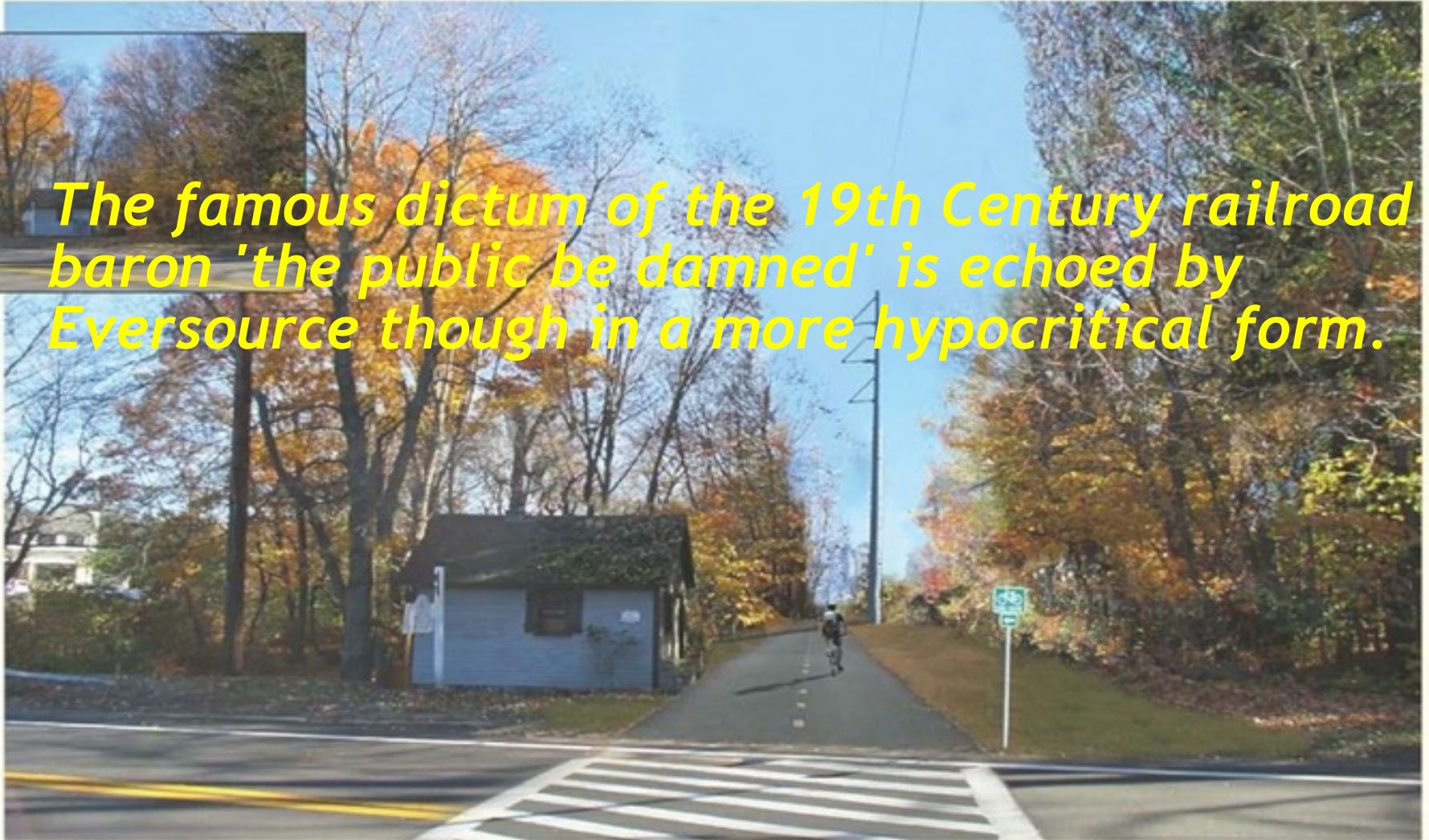
Ref: Sudbury, 1890-1989, 100 years in the Life of a Town



Protect Sudbury

ton F
Road, Sudbury (Facing East)
Sudbury-Hudson Line and Proposed Rail Trail

The famous dictum of the 19th Century railroad baron 'the public be damned' is echoed by Eversource though in a more hypocritical form.





Protect Sudbury

The famous dictum of the 19th Century railroad baron 'the public be damned' is echoed by Eversource though in a more hypocritical form.





Protect Sudbury

The famous dictum of the 19th Century railroad baron 'the public be damned' is echoed by Eversource though in a more hypocritical form.





Protect Sudbury Inc.

Sudbury Stakeholders Want to Know....

1. What is the official position of the town on this matter?
2. To what extent will the town oppose the Eversource proposal
3. Will you work cooperatively with Protect Sudbury?



Protect Sudbury Inc.

For more information....

Website

- <http://www.protectsudbury.org>

Facebook

- <https://www.facebook.com/groups/nosudburypowerlines/>

Twitter

- <https://twitter.com/ProtectSudbury>