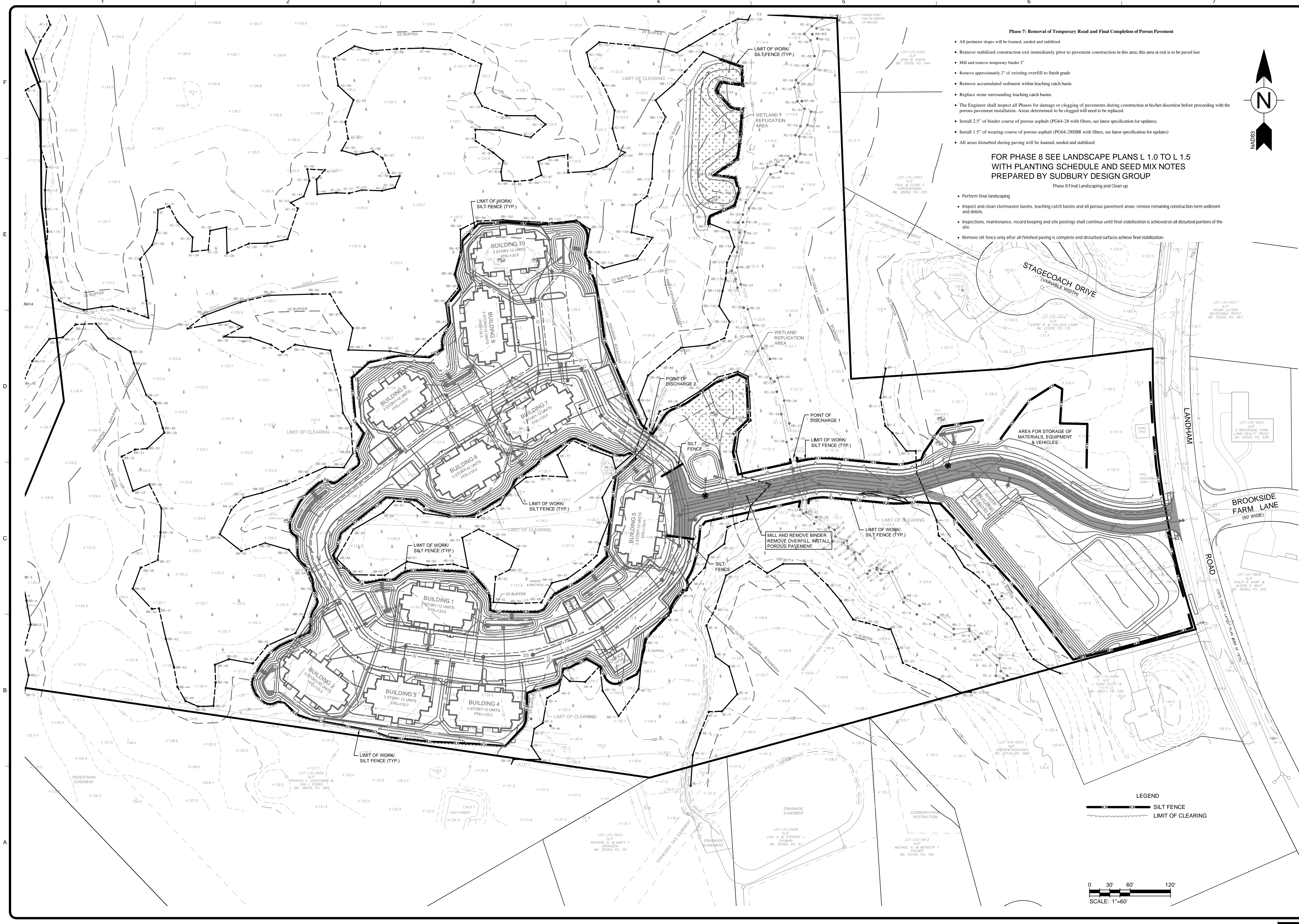


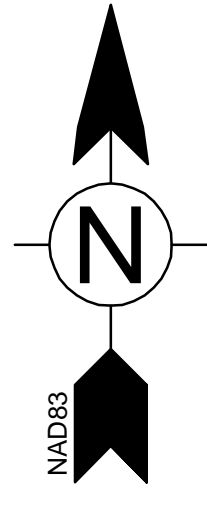
12/22/2011 10:03:50 AM - P:\143311127-14331-11001\CAD\SHEETFILES\6.7 STORMWATER MANAGEMENT PLANDWG - PAPPAS, JUD



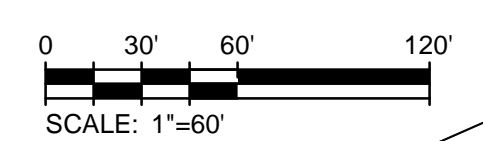
- Phase 7: Removal of Temporary Road and Final Completion of Porous Pavement**
- All perimeter slopes will be loamed, seeded and stabilized
 - Remove stabilized construction exit immediately prior to pavement construction in this area; this area at exit is to be paved last
 - Mill and remove temporary binder 2"
 - Remove approximately 2" of existing overfill to finish grade
 - Remove accumulated sediment within leaching catch basin
 - Replace stone surrounding leaching catch basins
 - The Engineer shall inspect all Phases for damage or clogging of pavements during construction at his/her discretion before proceeding with the porous pavement installation. Areas determined to be clogged will need to be replaced.
 - Install 2.5" of binder course of porous asphalt (PG64-28 with fibers, see latest specification for updates).
 - Install 1.5" of wearing course of porous asphalt (PG64-28SBR with fibers, see latest specification for updates)
 - All areas disturbed during paving will be loamed, seeded and stabilized

FOR PHASE 8 SEE LANDSCAPE PLANS L 1.0 TO L 1.5 WITH PLANTING SCHEDULE AND SEED MIX NOTES PREPARED BY SUDBURY DESIGN GROUP

- Phase 8 Final Landscaping and Clean up**
- Perform final landscaping
 - Inspect and clean stormwater basins, leaching catch basins and all porous pavement areas- remove remaining construction term sediment and debris.
 - Inspections, maintenance, record keeping and site postings shall continue until final stabilization is achieved on all disturbed portions of the site.
 - Remove silt fence only after all finished paving is complete and disturbed surfaces achieve final stabilization.



LEGEND
 --- SILT FENCE
 --- LIMIT OF CLEARING



TETRA TECH

 www.tetrattech.com
 One Grant Street
 Framingham, MA 01701
 PHONE: (508) 903-2000 FAX: (508) 903-2001

MARK	DATE	DESCRIPTION
	9-19-11	STORMWATER MANAGEMENT PLAN FILING
	10-4-11	NOTICE OF INTENT FILING
1	10-4-11	UPDATED COMPREHENSIVE PERMIT PLANS
2	12-15-11	REV. PLANS PER TOWN, MEPA & DEP COMMENTS

Client: Madison Place Sudbury LLC
 Proj. Loc.: Sudbury, MA
 The Residences at Johnson Farm
 Landham Road, Sudbury
Erosion & Sediment Control Plan
 Phase 7

Project No.: 127-14331-11001
 Designed By: G.K.D.
 Drawn By: J.L.P.
 Checked By:

C-6.7

Copyright: Tetra Tech

Bar Measures 1 inch